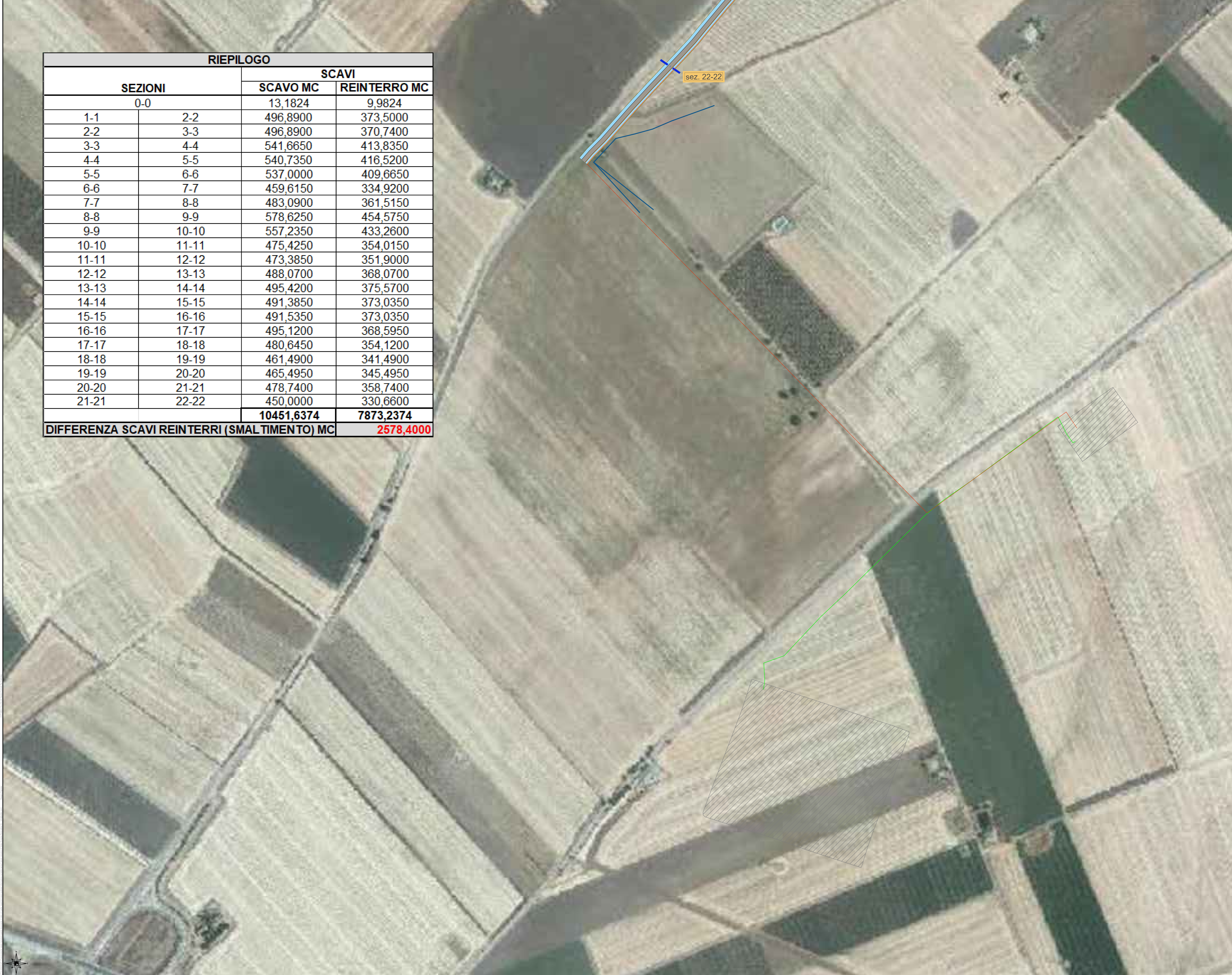


RIEPILOGO			
SEZIONI		SCAVI	
		SCAVO MC	REINTERRO MC
0-0		13,1824	9,9824
1-1	2-2	496,8900	373,5000
2-2	3-3	496,8900	370,7400
3-3	4-4	541,6650	413,8350
4-4	5-5	540,7350	416,5200
5-5	6-6	537,0000	409,6650
6-6	7-7	459,6150	334,9200
7-7	8-8	483,0900	361,5150
8-8	9-9	578,6250	454,5750
9-9	10-10	557,2350	433,2600
10-10	11-11	475,4250	354,0150
11-11	12-12	473,3850	351,9000
12-12	13-13	488,0700	368,0700
13-13	14-14	495,4200	375,5700
14-14	15-15	491,3850	373,0350
15-15	16-16	491,5350	373,0350
16-16	17-17	495,1200	368,5950
17-17	18-18	480,6450	354,1200
18-18	19-19	461,4900	341,4900
19-19	20-20	465,4950	345,4950
20-20	21-21	478,7400	358,7400
21-21	22-22	450,0000	330,6600
		10451,6374	7873,2374
DIFFERENZA SCAVI REINTERRI (SMALTIMENTO) MC			2578,4000



KEYMAP

LEGENDA

- Cavidotto
- Strada
- Fascia di rispetto

