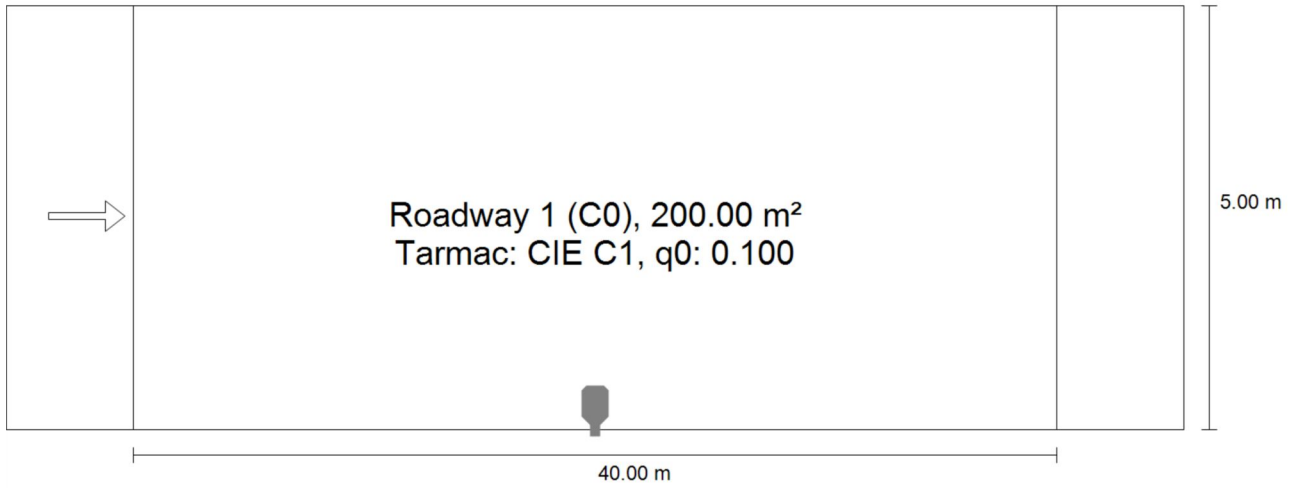
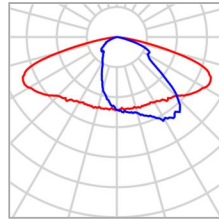


PERCORSO PERIMETRALE / Dati di pianificazione

Summary (according to EN 13201:2015)



PERCORSO PERIMETRALE / Dati di pianificazione

Summary (according to EN 13201:2015)

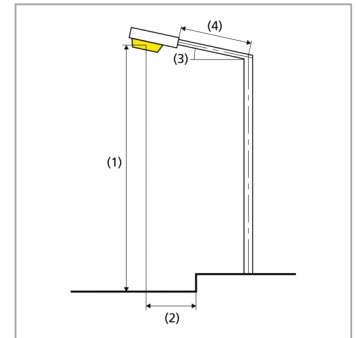
Manufacturer	Disano Illuminazione S.p.A	P	50.0 W
Article No.	330474-39	Φ_{Lamp}	6224 lm
Article name	3275 Mini Stelvio - street 3000K CRI 70 50W CLD Anthracite	$\Phi_{Luminaire}$	6224 lm
Fitting	1x LTx36_530_75_3k	η	100.00 %

PERCORSO PERIMETRALE / Dati di pianificazione

Summary (according to EN 13201:2015)

3275 Mini Stelvio - street 3000K CRI 70 50W CLD Anthracite (single side bottom)

(1) Light spot height	3.000 m
(2) Light point overhang	0.262 m
(3) Boom inclination	0.0°
(4) Boom length	0.000 m
Annual operating hours	4000 h: 100.0 %, 50.0 W
Wattage / route	1250.0 W/km
ULR / ULOR	0.00 / 0.00
Max. luminous intensities Any direction forming the specified angle from the downward vertical, with the luminaire installed for use.	≥ 70°: 427 cd/klm ≥ 80°: 84.5 cd/klm ≥ 90°: 0.00 cd/klm
Luminous intensity class The luminous intensity values in [cd/klm] for calculation of the luminous intensity class refer to the luminaire luminous flux according to EN 13201:2015.	G*4
Glare index class	D.4
MF	0.80

**Results for valuation fields**

A maintenance factor of 0.80 was used for calculating for the installation.

	Symbol	Calculated	Check
Roadway 1 (C0)	$E_{av}^{(1)}$	16.57 lx	
	$U_o^{(1)}$	0.01	

(1) Informative, not part of the valuation

PERCORSO PERIMETRALE / Dati di pianificazione

Summary (according to EN 13201:2015)

Results for energy efficiency indicators

	Symbol	Calculated	Energy Consumption
PERCORSO PERIMETRALE / Dati di pianificazione	D_p	0.015 W/lx*m ²	-
3275 Mini Stelvio - street 3000K CRI 70 50W CLD Anthracite (single side bottom)	D_e	1.0 kWh/m ² yr	200.0 kWh/yr

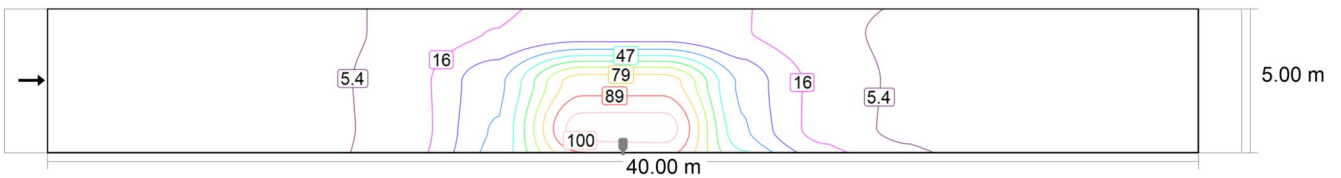
PERCORSO PERIMETRALE / Dati di pianificazione

Roadway 1 (C0)

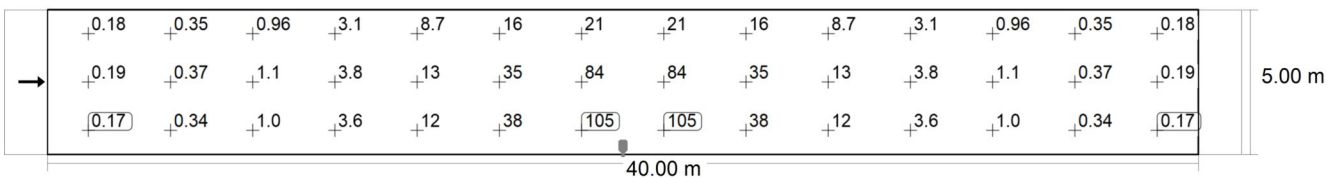
Results for valuation field

	Symbol	Calculated
Roadway 1 (C0)	$E_{av}^{(1)}$	16.57 lx
	$U_o^{(1)}$	0.01

(1) Informative, not part of the valuation



Maintenance value, horizontal illuminance [lx] (Iso-illuminance curves)



Maintenance value, horizontal illuminance [lx] (Value grid)

m	1.429	4.286	7.143	10.000	12.857	15.714	18.571	21.429	24.286	27.143	30.000	32.857	35.714	38.571
4.167	0.18	0.35	0.96	3.07	8.73	16.37	21.03	21.03	16.37	8.73	3.07	0.96	0.35	0.18
2.500	0.19	0.37	1.09	3.79	12.70	34.57	84.36	84.36	34.57	12.70	3.79	1.09	0.37	0.19
0.833	0.17	0.34	1.00	3.57	11.97	38.08	105.17	105.17	38.08	11.97	3.57	1.00	0.34	0.17

Maintenance value, horizontal illuminance [lx] (Value chart)

	E_{av}	E_{min}	E_{max}	g_1	g_2
Maintenance value, horizontal illuminance	16.6 lx	0.17 lx	105 lx	0.01	0.00