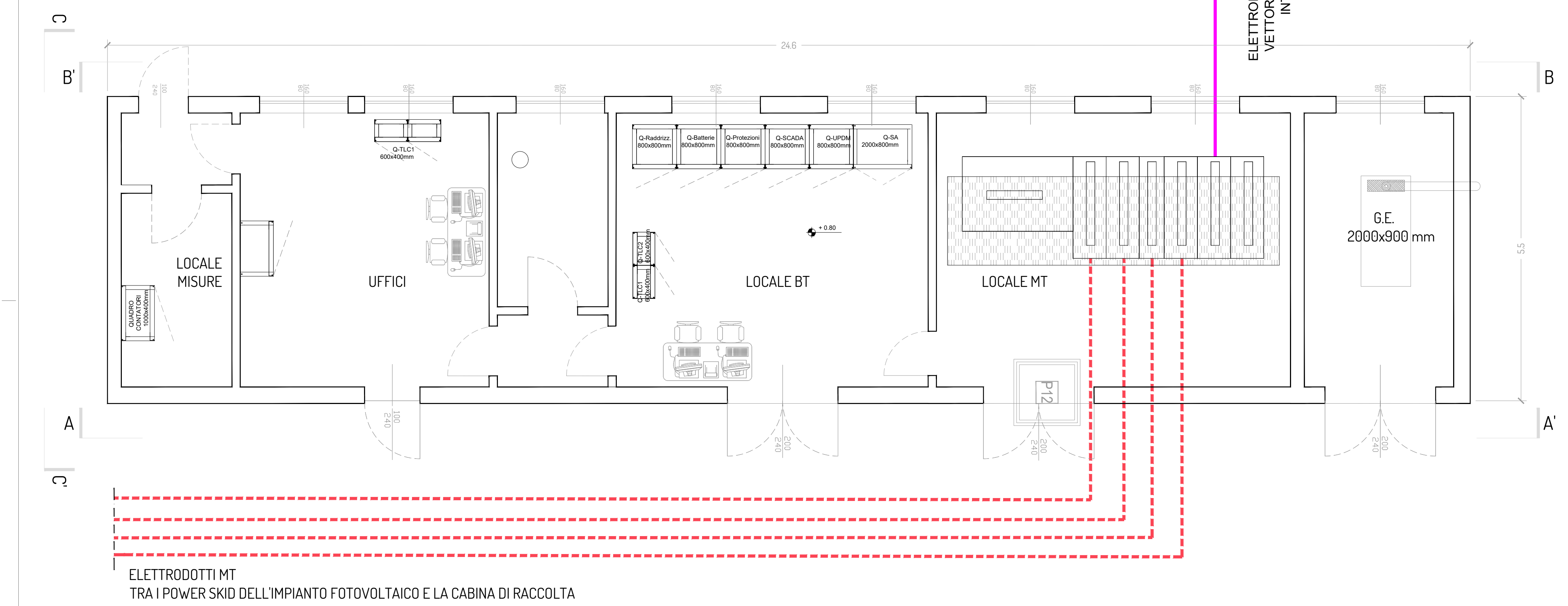


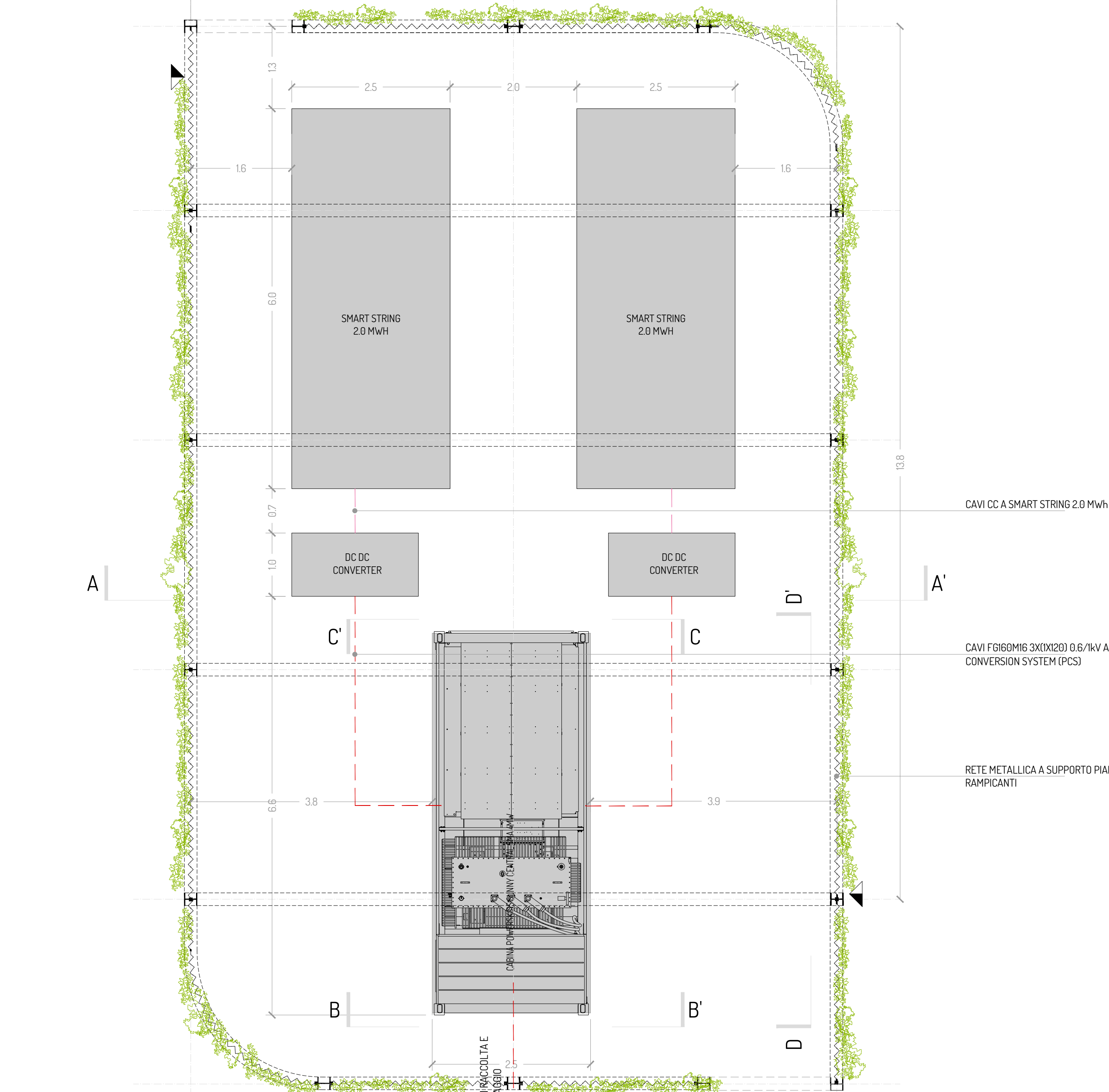
CABINA DI RACCOLTA E MONITORAGGIO



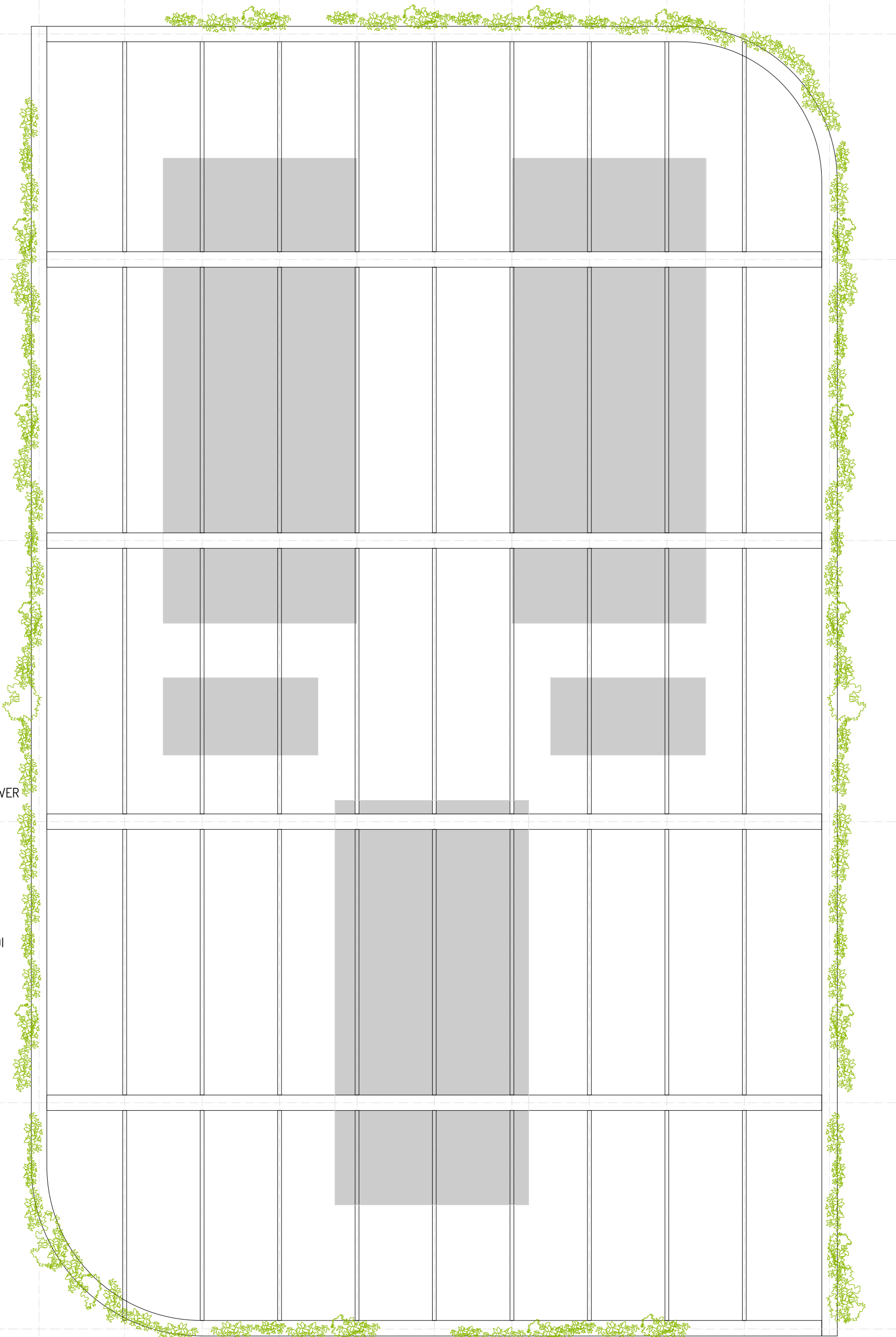
PIANTA _SCALA 1:50

ELETTRODOTTI MT TRA I POWER SKID DELL'IMPIANTO FOTOVOLTAICO E LA CABINA DI RACCOLTA

SISTEMA BESS



PIANTA _SCALA 1:50



PIANTA COPERTURA _SCALA 1:50

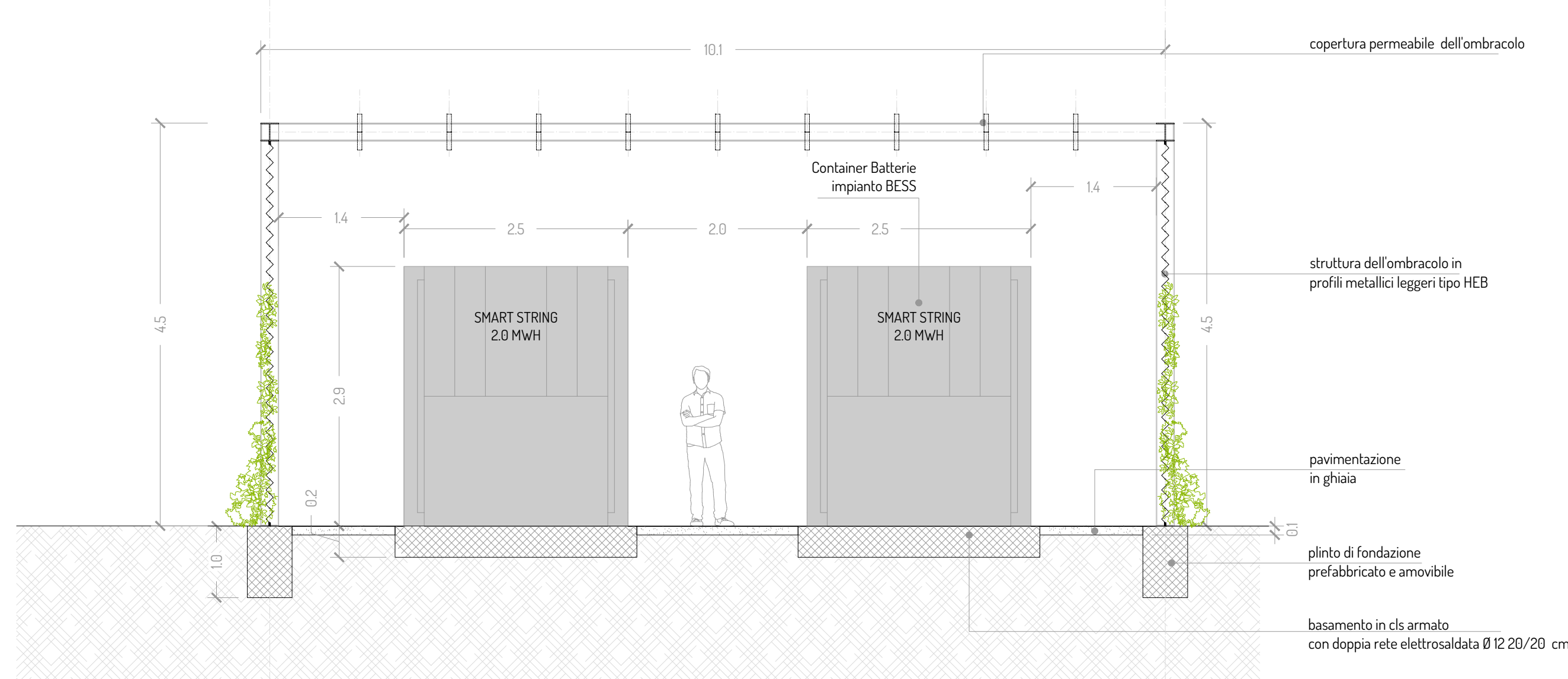
Schede tecniche dei componenti di impianto BESS

Technical Data	SIKA DC-DC CONVERTER
Rated Power	200kW at 1000VDC
Max. Ambient Power (at 30°C)	200kW at 1000VDC
Battery pack voltage range	500V to 1500V
Power voltage range	500V to 1500V
Max. Ambient Temp (at 30°C)	-40 °C to 50 °C
Max. Ambient Temp (at 30°C)	20°C to 50°C (at 1000V)
Supply voltage	220V / 1Ph 50Hz 600VA 220V / 1Ph 50Hz 600VA 220V / 1Ph 50Hz 600VA
Battery Technology	Li-Ion
Efficiency	98.2%
Power factor	0.99
Power factor correction	Control hardware in the battery system
Control hardware in the battery system	Control hardware in the battery system
Control hardware in the battery system	Control hardware in the battery system
Control hardware in the battery system	Control hardware in the battery system
Control hardware in the battery system	Control hardware in the battery system

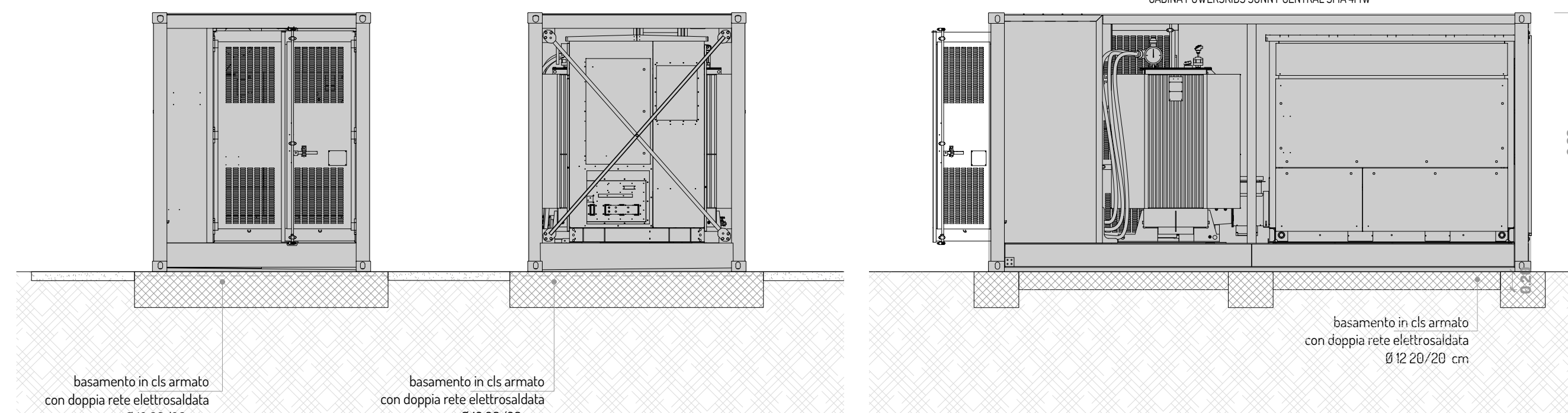
	Battery Pack	
	General	LUNA2000-2.0MWH-1HD
Model	LUNA2000-2.0MWH-1HD	LUNA2000-2.0MWH-2HT
Cell Material	LFP	LFP
Pack Configuration	18S 1P	18S 1P
Rated Voltage	51.2 V	51.8 V
Nominal Capacity	320 Ah / 16.38 kWh	280 Ah / 14.13 kWh
Supported Charge & Discharge Rate	≤ 1 C	≤ 0.5 C
Weight	≤ 140 kg	≤ 140 kg
Dimensions (W x H x D)	442 x 307 x 660 mm	442 x 307 x 660 mm



	Battery Container	
	LUNA2000-2.0MWH-1HD	LUNA2000-2.0MWH-2HT
Model	LUNA2000-2.0MWH-1HD	LUNA2000-2.0MWH-2HT
DC Rated Voltage	51.2V	51.8V
DC Max. Voltage	1500V	1500V
Nominal Energy Capacity	16.38 kWh	14.13 kWh
Rated Power	200 kW	200 kW
Rated Voltage	51.2 V	51.8 V
Cell Configuration	18S 1P	18S 1P
Cell Voltage	3.2V	3.2V
Cell Capacity	320 Ah	280 Ah
Cell Material	LFP	LFP
Cell Temperature Range	-40°C ~ 55°C	-40°C ~ 55°C
System Temperature Range	-40°C ~ 55°C	-40°C ~ 55°C
System Voltage Range	51.2V ~ 1500V	51.8V ~ 1500V
Max. Operating Altitude	4000 m	4000 m
Cooling Method	Smart Air Cooling	Smart Air Cooling
Configuration of HVAC	4*HVAC	4*HVAC
Fire Suppression Agent	FM-200 / Novec 1230™	FM-200 / Novec 1230™
Communication Interface	Ethernet / RS485	Ethernet / RS485
Communication Protocol	Modbus TCP / RTU	Modbus TCP / RTU
Protection Degree	IP54	IP54



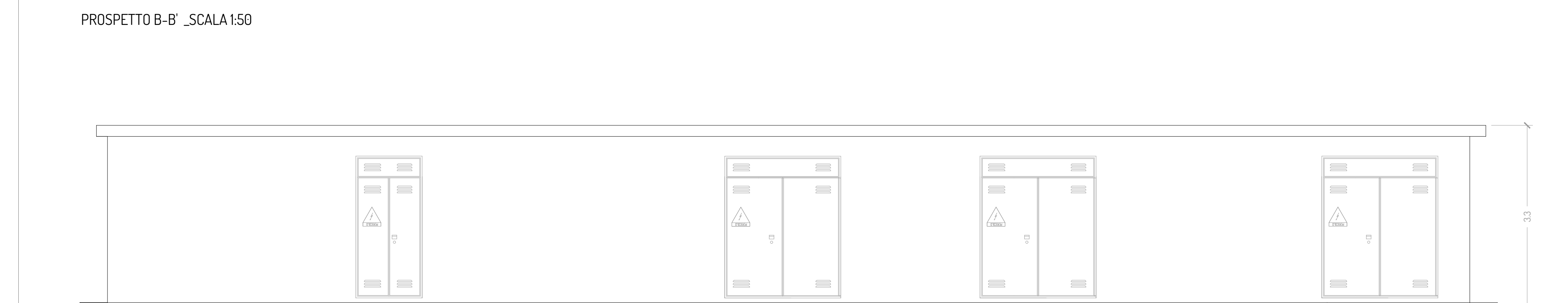
SEZIONE A-A' _SCALA 1:50



SEZIONE B-B' _SCALA 1:50

SEZIONE C-C' _SCALA 1:50

SEZIONE D-D' _SCALA 1:50



PIANTA _SCALA 1:50

hope group
SRN GIOIO

PROGETTO PER LA REALIZZAZIONE DEL NUOVO PARCO AGRICOLA NATURALISTICO-VOLTAICO DELL'ALTA MURCIA E DELLE RELATIVE OPERE DI CONNESSIONE ALLA RTN LOCALITÀ MASSERIA CAPUTI

COMUNE DI MINERVINO MURGE (BAT)

DENOMINAZIONE IMPIANTO - PVAGOS MINERVINO - MASSERIA CAPUTI

POTENZA NOMINALE 65 MW

PROGETTO DEFINITIVO - SIA

PROGETTAZIONE E SIA
HOPE engineering
Ing. Fabio PACCARELLI
Ing. Andrea ANGELINI
Arch. Gaetano FORNARELLI
dott.ssa Anastasia AGNOLI

AGRONOMIA E STUDI CULTURALI
dott.ssa Lucia PEGOLA

STUDI SPECIALISTICI E AMBIENTALI
MICROClimatica
dott.ssa Elisa GARTO
ARCHEOLOGIA
dott.ssa Domènica CARRASSO
GEOLOGIA
dott.ssa Anna Maria RUBICCH
ACUSTICA
dott.ssa Sabina SCARABIELLO
FAUNISTICA
dott. Fabio Mastropasqua

EG.4 LAYOUT IMPIANTO
EG.4.8 Particolari tipologici: Cabine elettriche e sistema BESS

REV. DATA. DESCRIZIONE
01 24 01
02 24 01

