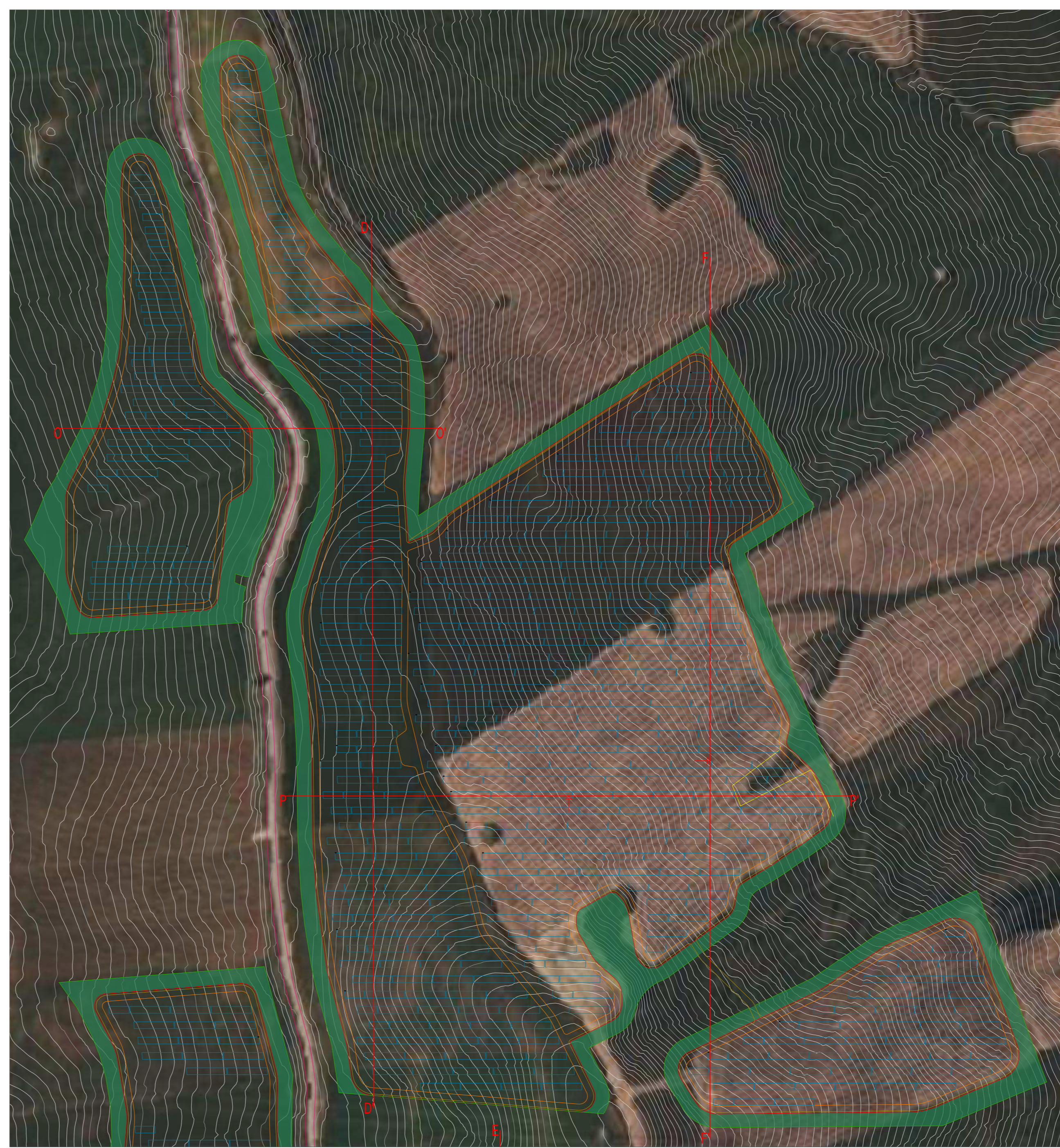
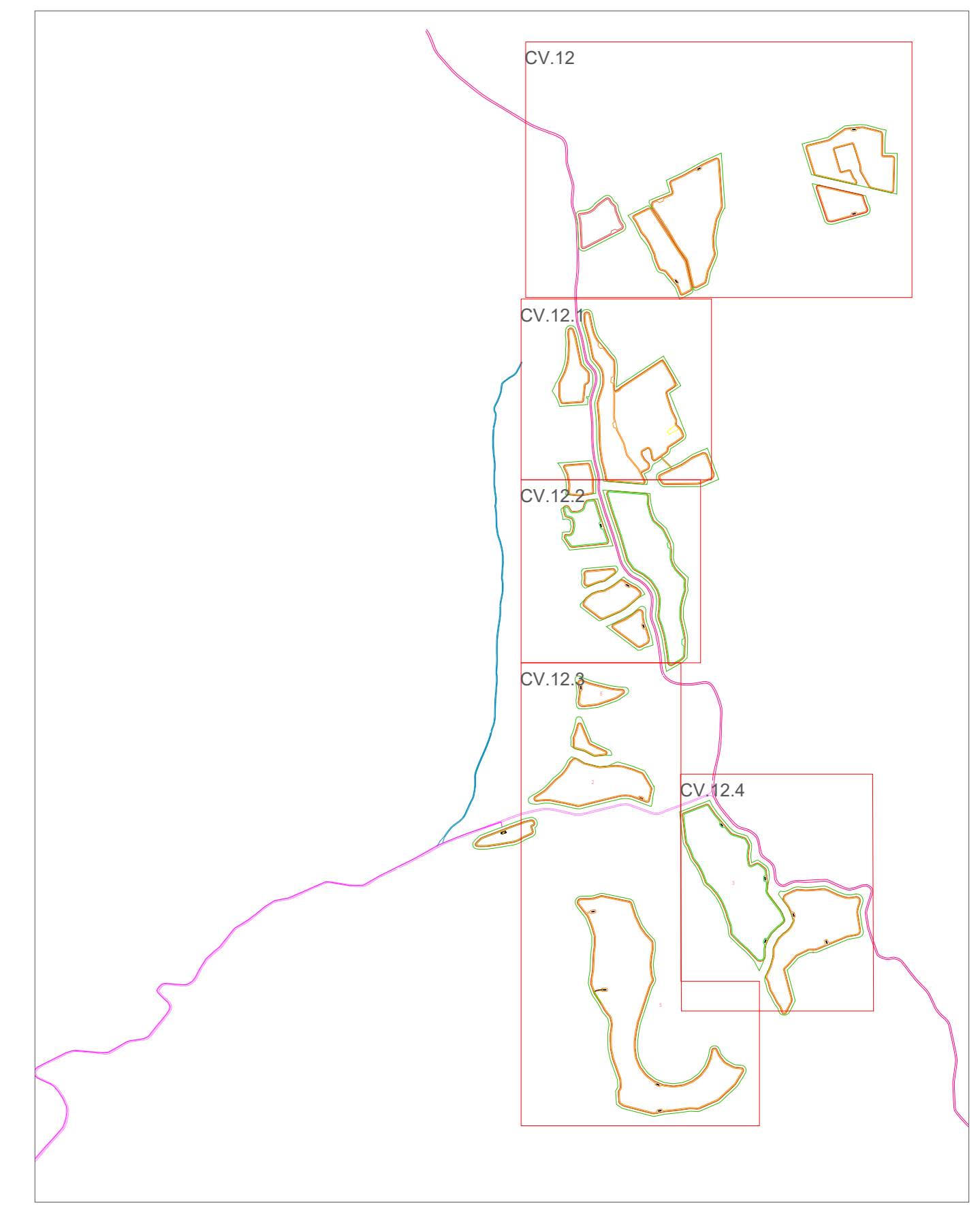


Planimetria Ante Operam
Scala 1:2000



Planimetria Post Operam
Scala 1:2000



Regione: Sicilia
 Provincia: Palermo
 Comune: Piana degli Albanesi
 Località: Contrade "Costa Mammana - Mandrazza"

**IMPIANTO AGRIVOLTAICO "PIANA DEGLI ALBANESI"
 DELLA POTENZA DI 75 MW IN IMMISSIONE
 PROGETTAZIONE DEFINITIVA**

Titolo: AGRFV-PA-EPD018A0
 Profili del terreno Ante e Post Operam

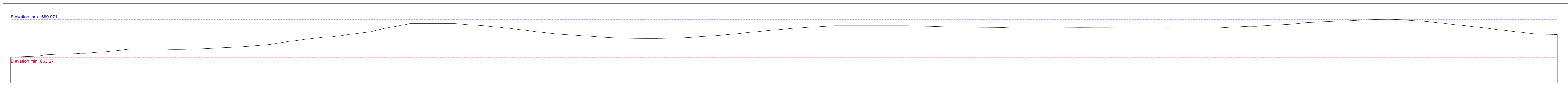
Allegato: CV.12.1
 Progettazione: Ing. Maurizio Moscoloni


Visti / Firme / Timbri:
 Note:

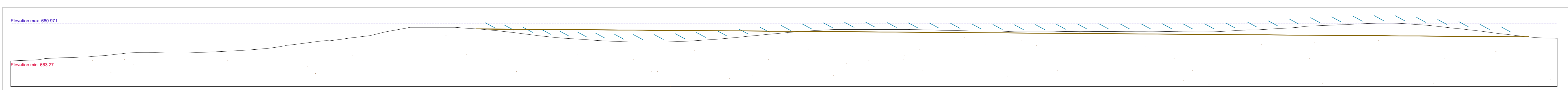
Data	Rev.	Descrizione revisioni	Elaborato da:	Controlato da:	Approvato da:
26.09.2023	0	PRIMA EMISSIONE	Ing. M. Moscoloni	PIROIDE srl	PIROIDE srl

PIROIDE srl
 Via M. Sciacca, 10
 90133 Palermo, Italia
 P.IVA 02010400818

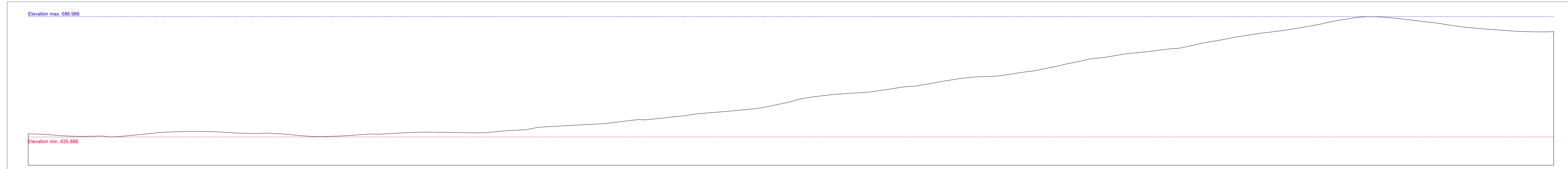
formato: UNI AD



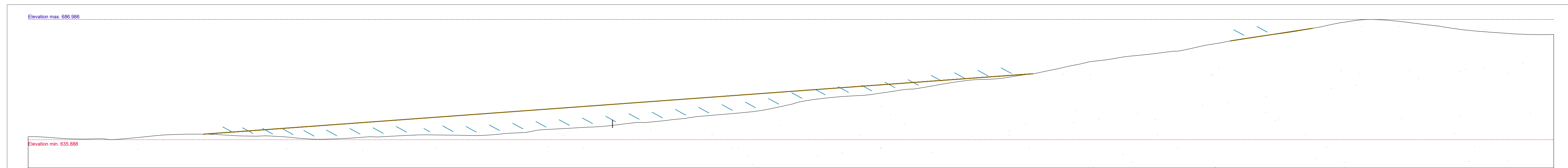
Sezione D-D' Ante Operam
Scala 1:1000



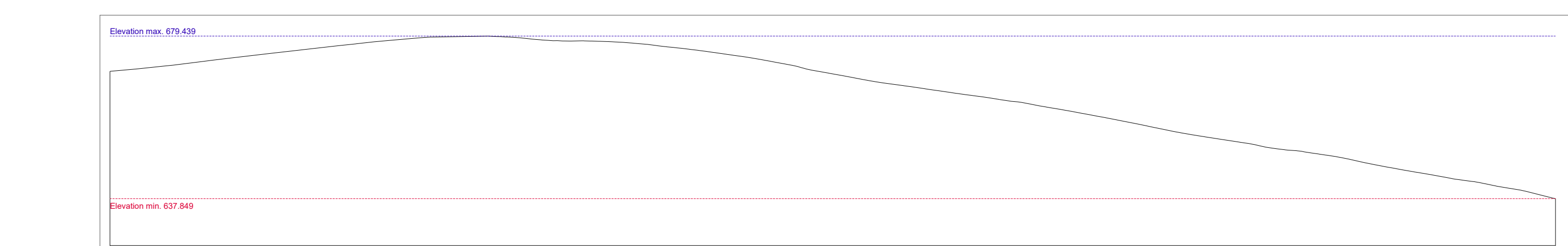
Sezione D-D' Post Operam
Scala 1:1000



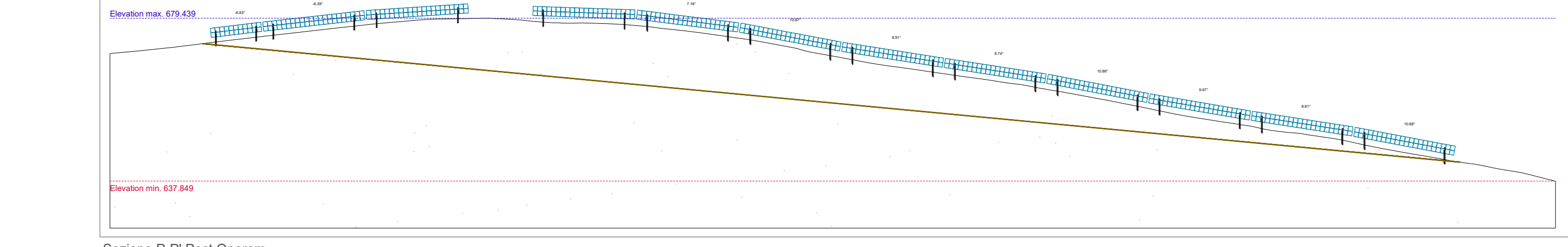
Sezione F-F' Ante Operam
Scala 1:1000



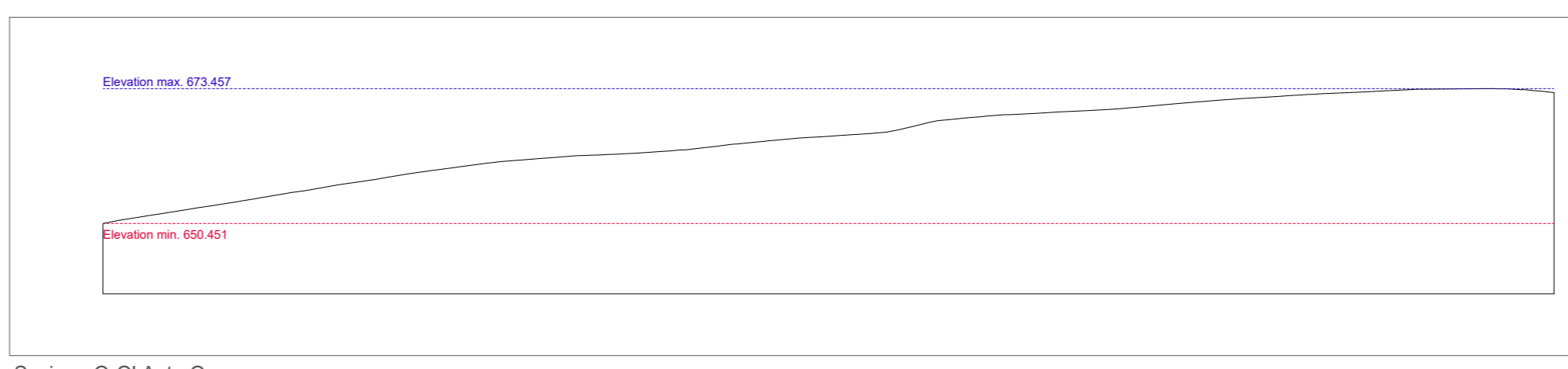
Sezione F-F' Post Operam
Scala 1:1000



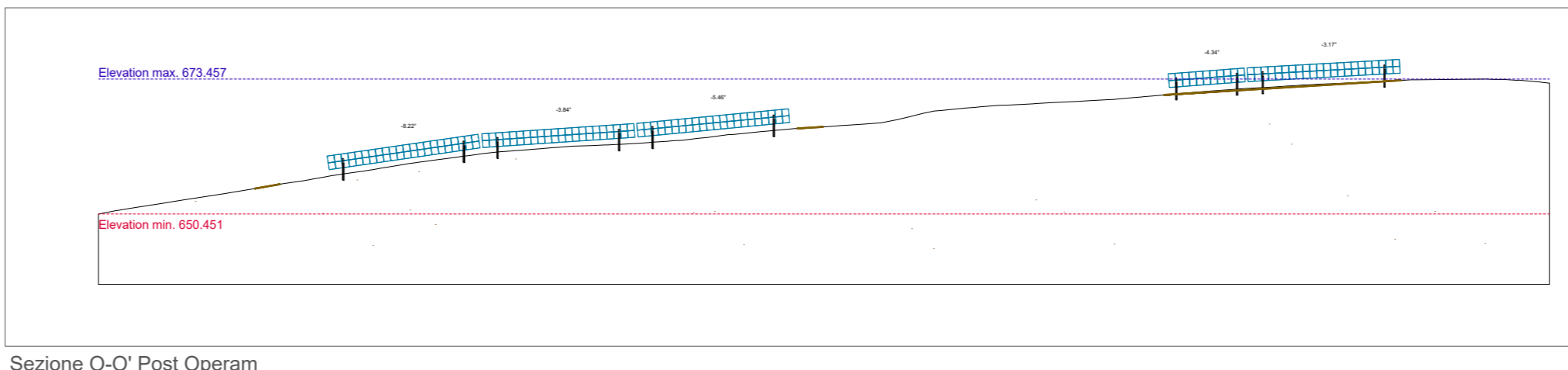
Sezione P-P' Ante Operam
Scala 1:1000



Sezione P-P' Post Operam
Scala 1:1000



Sezione O-O' Ante Operam
Scala 1:1000



Sezione O-O' Post Operam
Scala 1:1000