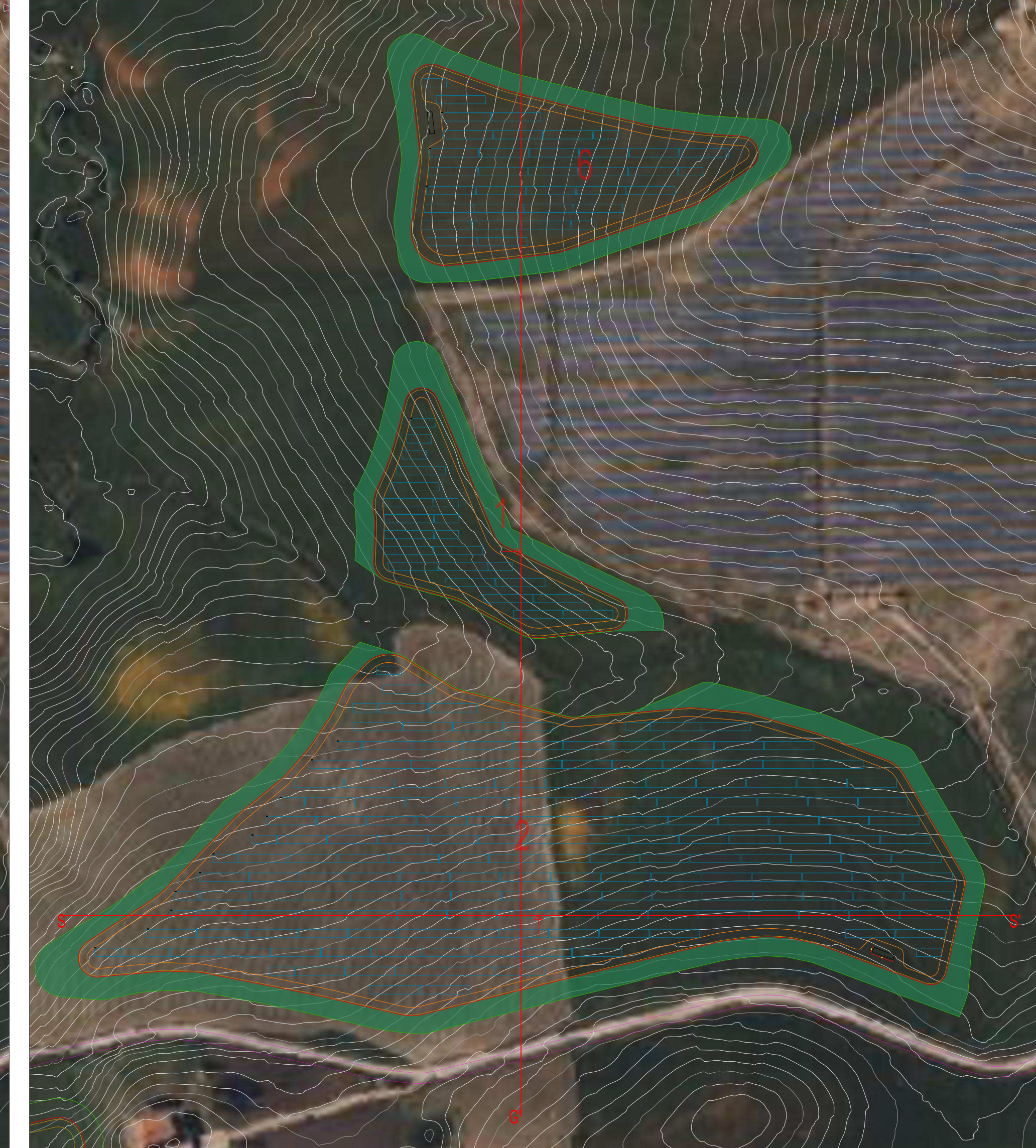
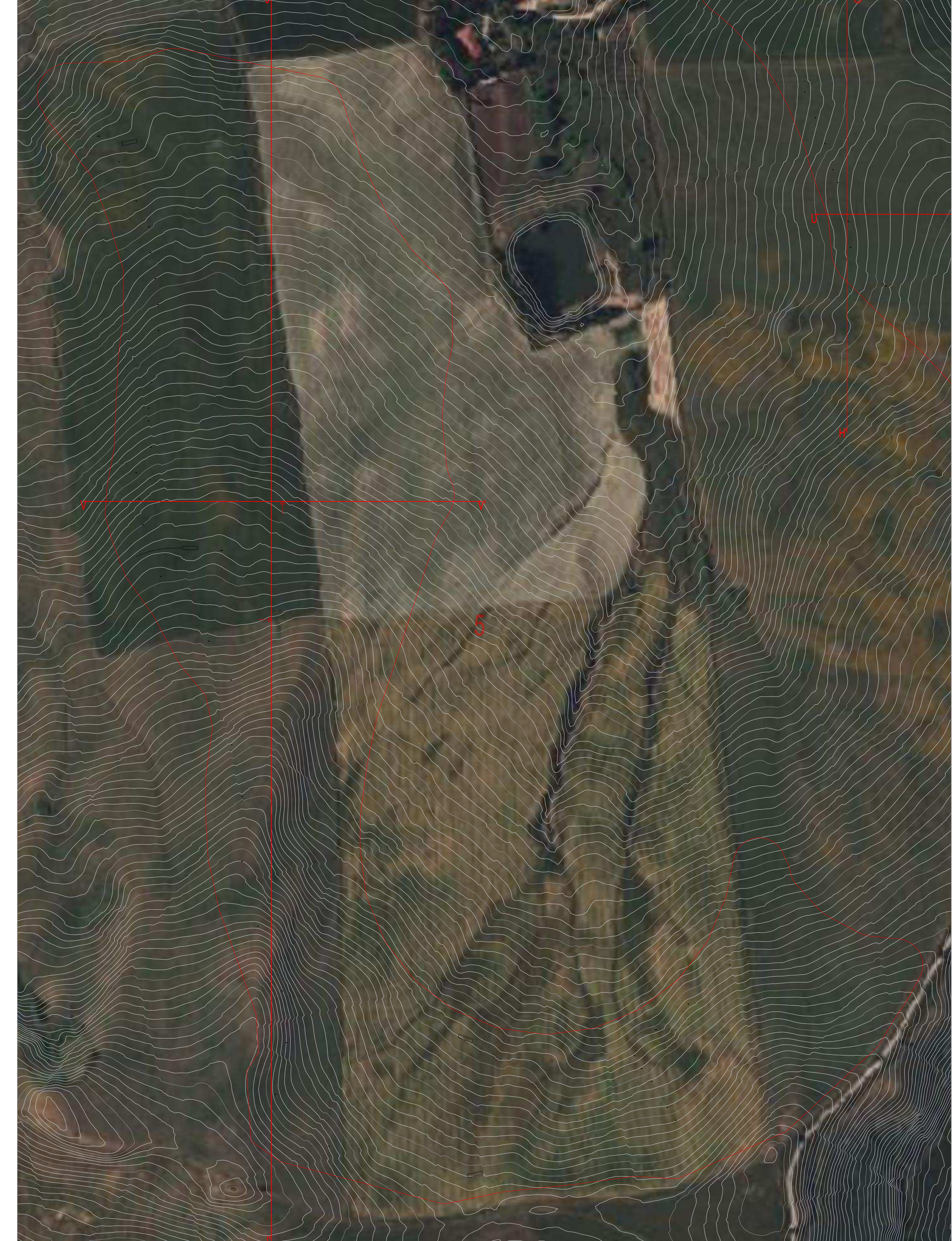




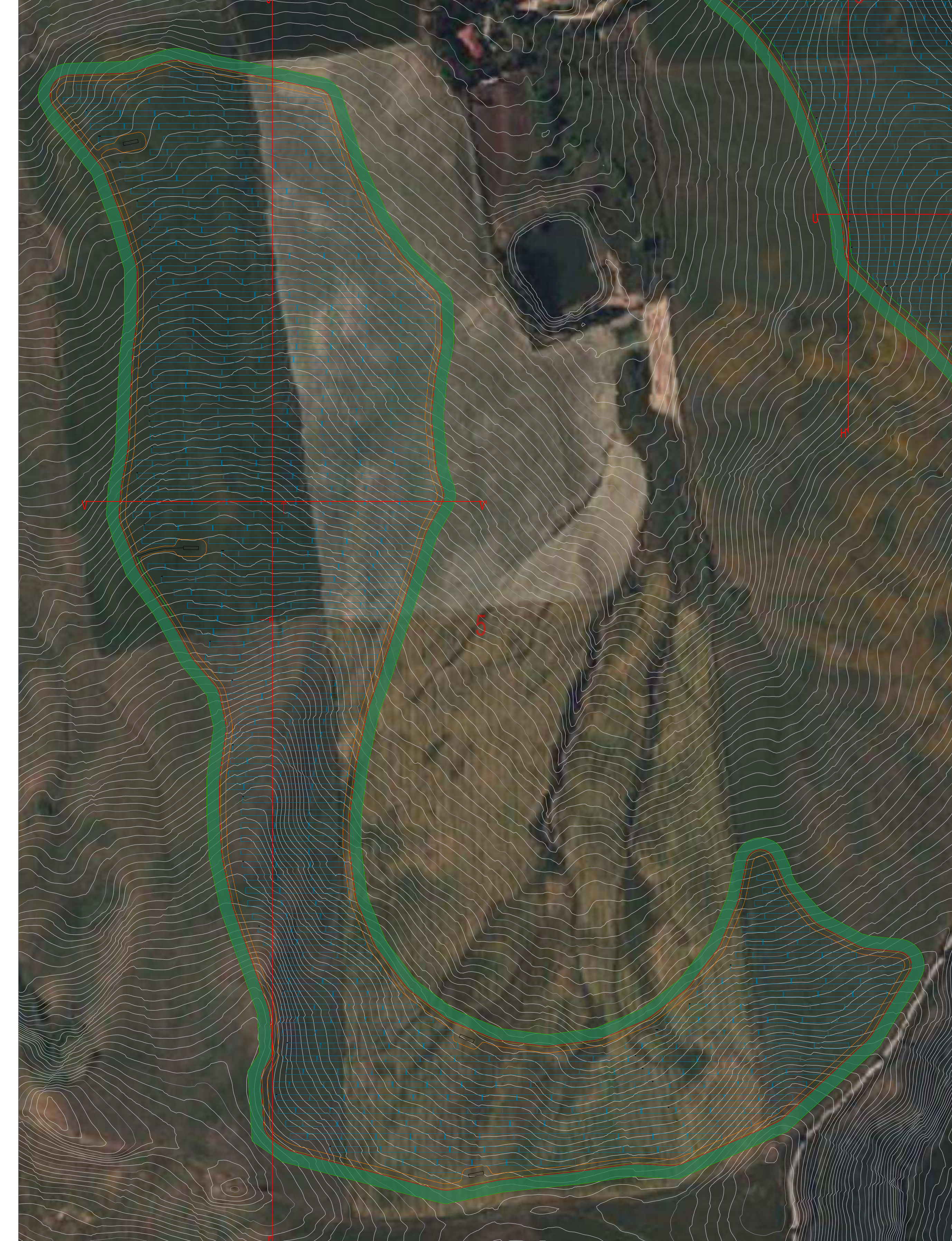
Planimetria Ante Operam  
Scala 1:2000



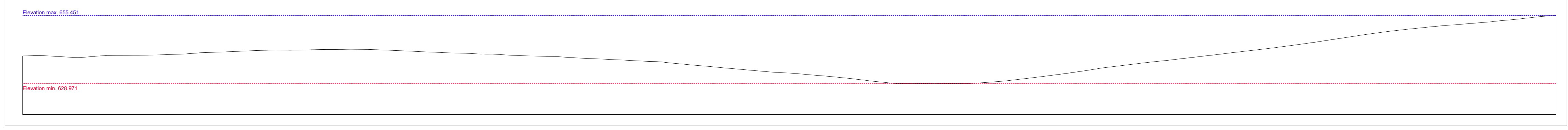
Planimetria Post Operam  
Scala 1:2000



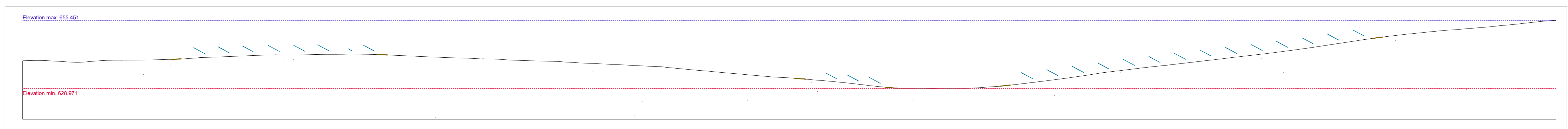
Planimetria Ante Operam  
Scala 1:2000



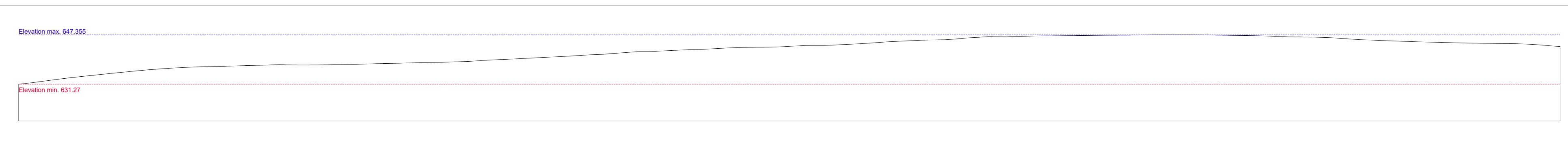
Planimetria Post Operam  
Scala 1:2000



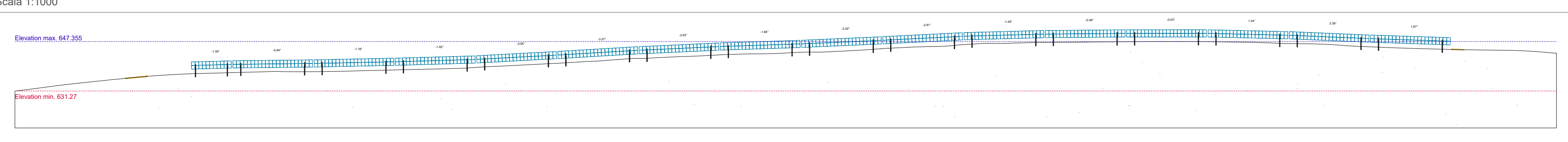
Sezione G-G' Ante Operam  
Scala 1:1000



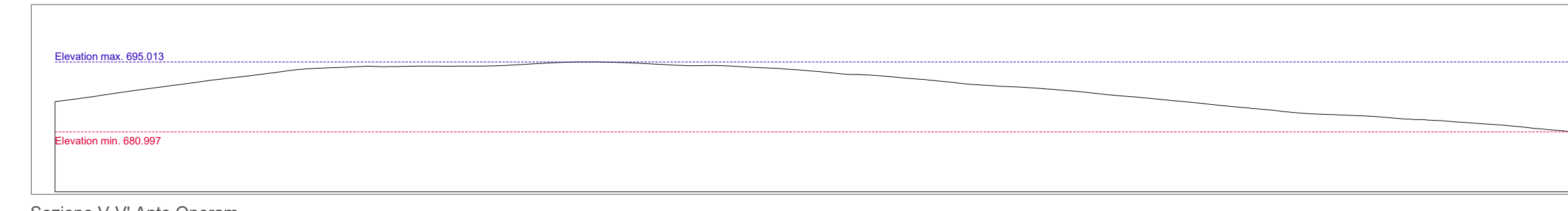
Sezione G-G' Post Operam  
Scala 1:1000



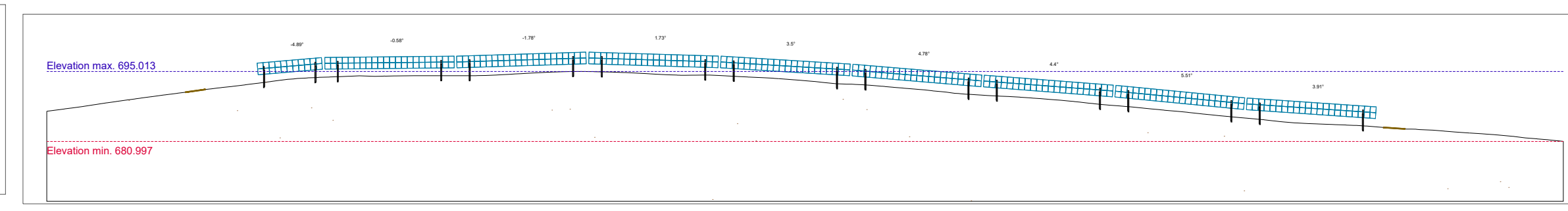
Sezione S-S' Ante Operam  
Scala 1:1000



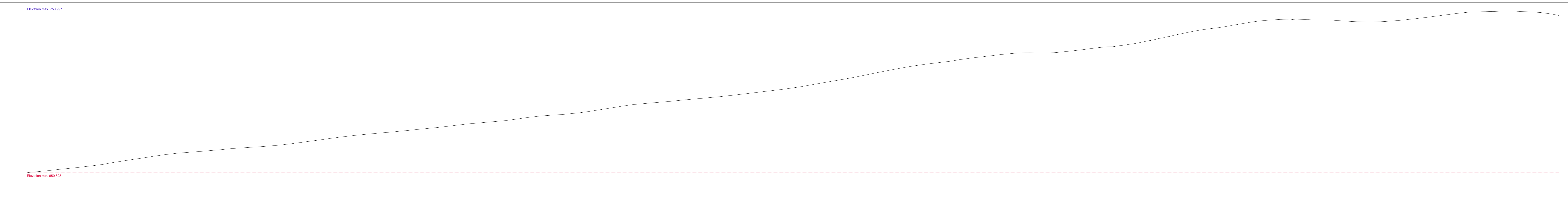
Sezione S-S' Post Operam  
Scala 1:1000



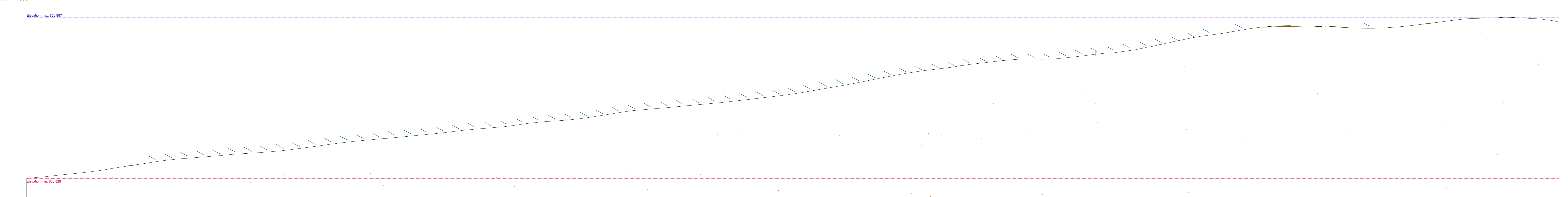
Sezione V-V' Ante Operam  
Scala 1:1000



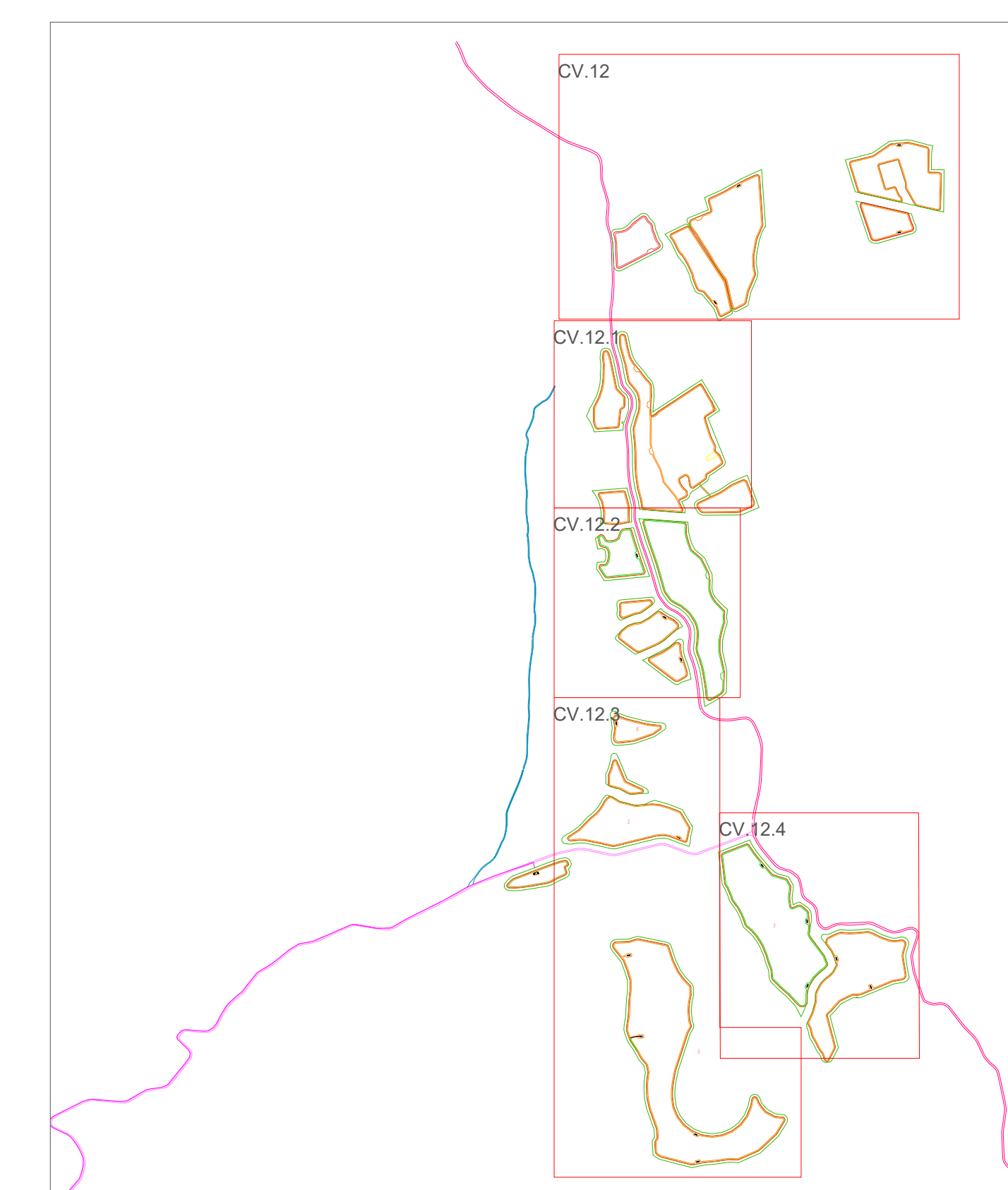
Sezione V-V' Post Operam  
Scala 1:1000



Sezione J-I' Ante Operam  
Scala 1:1000



Sezione J-I' Post Operam  
Scala 1:1000



Regione: Sicilia  
 Provincia: Palermo  
 Comune: Piana degli Albanesi  
 Località: Contrade "Costa Mammara - Mandrazza"

**IMPIANTO AGRIVOLTAICO "PIANA DEGLI ALBANESI"**  
 DELLA POTENZA DI 75 MW IN IMMISSIONE  
 PROGETTAZIONE DEFINITIVA

Titolo: AGRFV-PA-EPD020A0  
 Profili del terreno Ante e Post Operam

Allegato: Progettazione:  Ing. Maurizio Moscoloni

**CV.12.3**

Visti / Firme / Timbri:

Note:

Data	Rev.	Descrizione revisioni	Elaborato da:	Controllato da:	Approvato da:
16.09.2023	0	PRIMA IMMISSIONE	Ing. M. Moscoloni	PIROIDE srl	PIROIDE srl

REVISIONI


  
 PIROIDE srl  
 Via Piana degli Albanesi, 1  
 91010 Piana degli Albanesi (PA)

formato: UNI A0+1 Scala 1:2000-1:1000