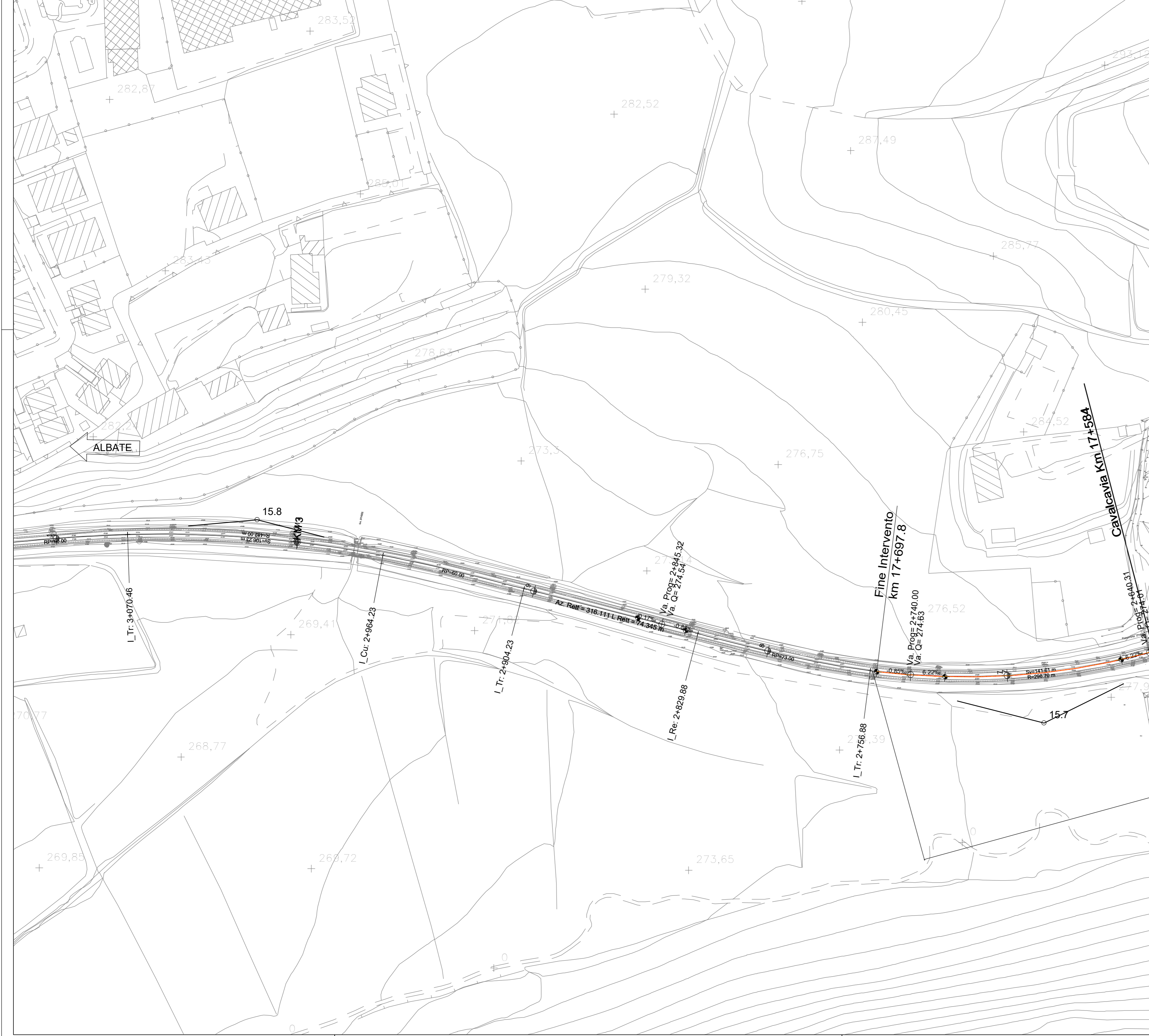


NUMERO SEZIONE	2100.00	2150.00	2200.00	2250.00	2300.00	2350.00	2400.00	2450.00	2500.00	2550.00	2600.00	2650.00	2700.00	2750.00	2800.00	2850.00	2900.00	2950.00	3000.00	3050.00	3100.00
QUOTE PROGETTO	270.94	270.84	270.89	271.01	271.29	271.67	272.19	272.82	273.53	274.30	275.11	275.96	276.84	277.74	278.65	279.57	280.49	281.41	282.32	283.23	284.14
QUOTE TERRENO	270.94	270.84	270.89	271.01	271.29	271.67	272.19	272.82	273.53	274.30	275.11	275.96	276.84	277.74	278.65	279.57	280.49	281.41	282.32	283.23	284.14
ETOMETRICHE	50.00	50.00	50.00	50.00	50.00	50.00	50.00	50.00	50.00	50.00	50.00	50.00	50.00	50.00	50.00	50.00	50.00	50.00	50.00	50.00	50.00
DIST. PARZIALI	2100.00	2150.00	2200.00	2250.00	2300.00	2350.00	2400.00	2450.00	2500.00	2550.00	2600.00	2650.00	2700.00	2750.00	2800.00	2850.00	2900.00	2950.00	3000.00	3050.00	3100.00
PROGRESSIVE	2100.00	2150.00	2200.00	2250.00	2300.00	2350.00	2400.00	2450.00	2500.00	2550.00	2600.00	2650.00	2700.00	2750.00	2800.00	2850.00	2900.00	2950.00	3000.00	3050.00	3100.00
ANDAMENTO PLANIMETRICO	Lr 204.88	Lr 204.88	Lr 204.88	Lr 204.88	Lr 204.88	Lr 204.88	Lr 204.88	Lr 204.88	Lr 204.88	Lr 204.88	Lr 204.88	Lr 204.88	Lr 204.88	Lr 204.88	Lr 204.88	Lr 204.88	Lr 204.88	Lr 204.88	Lr 204.88	Lr 204.88	Lr 204.88
SOPRAELEVAZIONE	15.0	15.0	15.0	15.0	15.0	15.0	15.0	15.0	15.0	15.0	15.0	15.0	15.0	15.0	15.0	15.0	15.0	15.0	15.0	15.0	15.0
VELOCITA'	75km/h	75km/h	75km/h	75km/h	75km/h	75km/h	75km/h	75km/h	75km/h	75km/h	75km/h	75km/h	75km/h	75km/h	75km/h	75km/h	75km/h	75km/h	75km/h	75km/h	75km/h

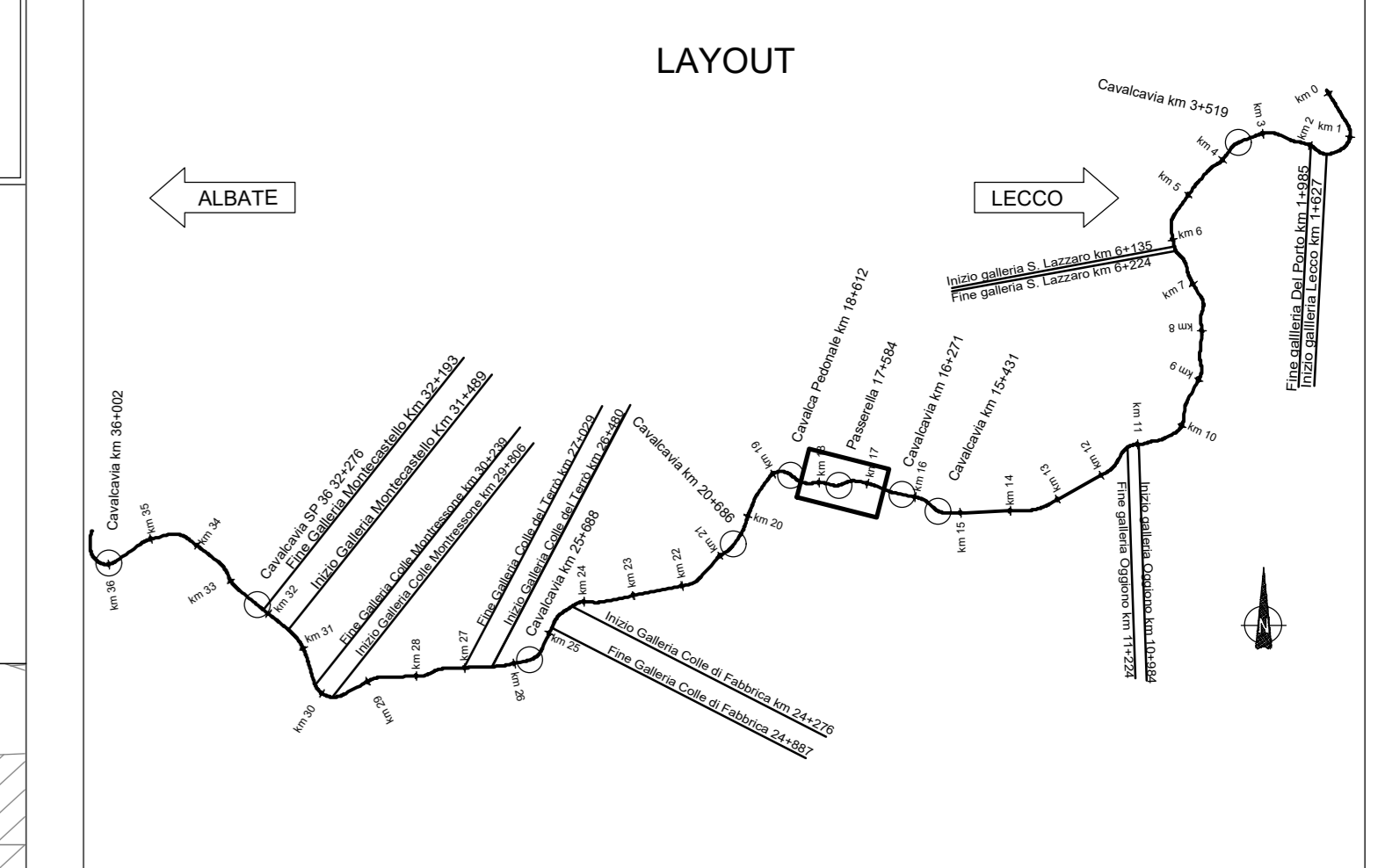


LEGENDA

- BINARI ESISTENTI IN ESERCIZIO
- - - BINARI IN DEMOLIZIONE
- BINARI IN PROGETTO

FERROVIA 15 V PLAN 15.6			FERROVIA 15 V PLAN 15.7			FERROVIA 15 V PLAN 15.8		
X	153096.428	313.884258	X	1530778.024	316.050089	X	1530462.488	316.111418
Y	5070428.938	270.690889	Y	5070295.827	270.690889	Y	5070380.939	270.690889
R(m)	-348.000	0.000000	R(m)	288.700	0.000000	R(m)	-482.000	0.000000
Sv(m)	178.112	75	Sv(m)	141.612	75	Sv(m)	108.250	75
Alfa	32.217334	60.000	Alfa	30.181723	60.000-73.000	Alfa	14.030692	60.000
Alfa tot	43.193537	60.000	Alfa tot	45.420529	60.000-73.000	Alfa tot	21.965419	60.000
Tarco	88.985	120.0	Tarco	12.163	140.0	Tarco	53.331	60.0

V ALT 15.16		V ALT 15.17		V ALT 15.18		V ALT 15.19		V ALT 15.20		V ALT 15.21	
PR	2235.000	PR	2324.150	PR	2470.270	PR	2640.310	PR	2740.000	PR	2845.320
QV	270.940	QV	271.420	QV	272.850	QV	274.010	QV	274.630	QV	274.540
Pu	0.001	Pu	0.005	Pu	0.010	Pu	0.007	Pu	0.008	Pu	0.001
Pv	0.005	Pv	0.010	Pv	0.007	Pv	0.006	Pv	-0.001	Pv	0.000
DP	0.004	DP	0.004	DP	-0.003	DP	-0.001	DP	-0.007	DP	0.001
R	-5000.000	R	-5000.000	R	8000.000	R	4000.000	R	4000.000	R	-2000.000
T	10.026	T	11.018	T	11.857	T	12.052	T	14.148	T	10.271
F	0.010	F	0.012	F	-0.009	F	-0.002	F	-0.025	F	0.003
Pv_I	2224.974	Pv_I	2313.133	Pv_I	2458.413	Pv_I	2628.208	Pv_I	2725.853	Pv_I	2835.049
Pv_F	2245.026	Pv_F	2335.167	Pv_F	2482.127	Pv_F	2652.362	Pv_F	2754.148	Pv_F	2855.991



COMMITTENTE: **RFI** RETE FERROVIARIA ITALIANA GRUPPO FERROVIE DELLO STATO ITALIANE

PROGETTAZIONE: **ITALFER** INFRASTRUTTURE FERROVIARIE

CUP: J84E21002910001

S. O. PROGETTAZIONE INTEGRATA NORD

PROGETTO DI FATTIBILITÀ TECNICO ECONOMICA

ELETTRIFICAZIONE DELLA LINEA COMO - LECCO

TRATTA ALBATE CAMERLATA - LECCO

INFRASTRUTTURA FERROVIARIA
Piano-profilo variante cavalcavia km 17+584

SCALA: 1:1000

COMMESSA LOTTO FASE ENTE TIPO DOC. OPERA/DISCIPLINA Progr. REV.

LC00 01 R 26 L7 IF0001 003 A

Rev.	Descrizione	Redatto	Data	Verificato	Data	Approvato	Data	Autorizzato Data
A	Emissione	...	Luglio 2023	...	Luglio 2023	...	Luglio 2023	...

File: LC0001F26L7IF0001003A.dwg n. Esab.: