

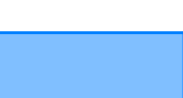
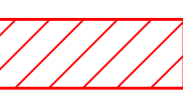




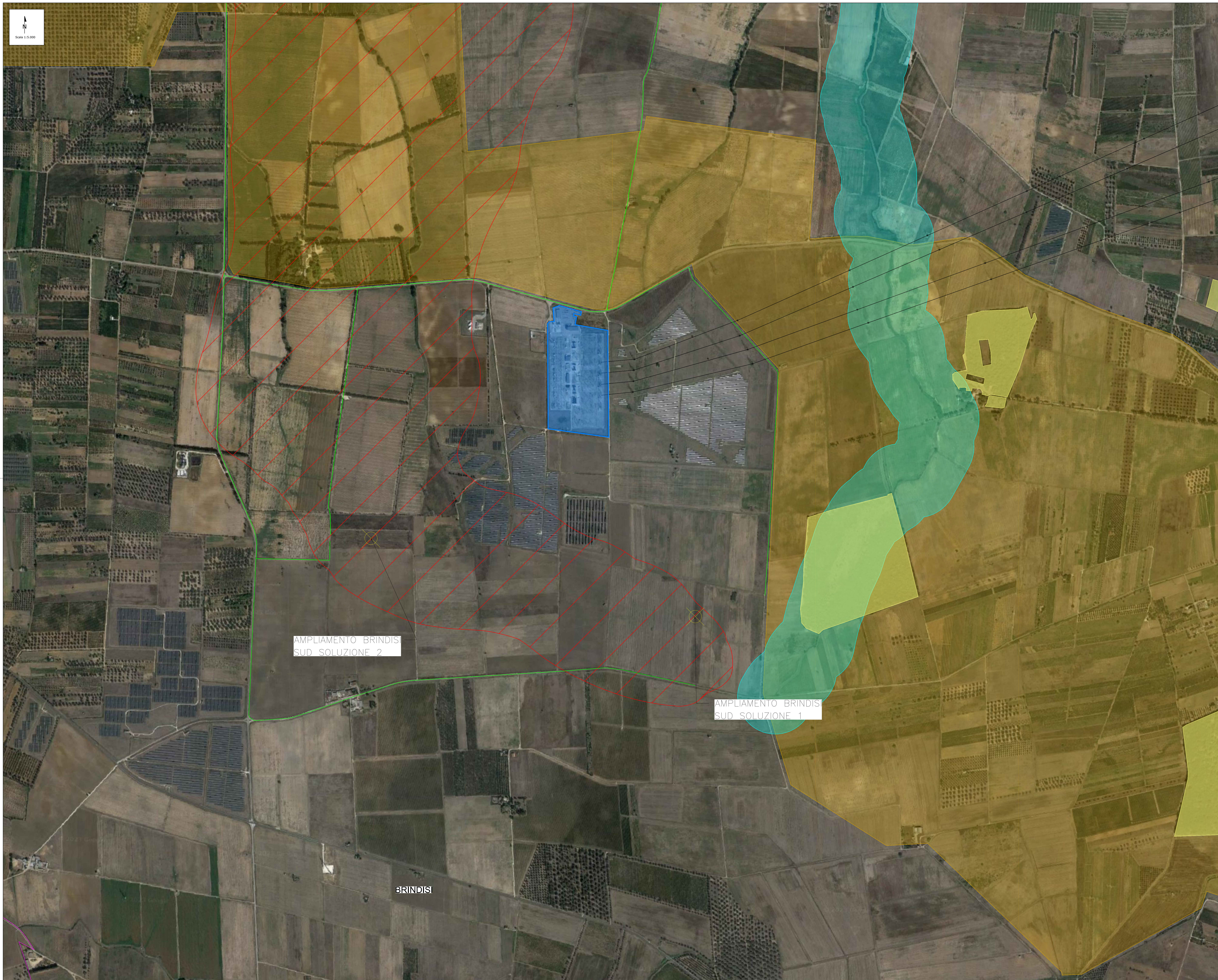


-  ELETTRODOTTO AEREO 380 kV TERNA
-  CONFINI COMUNALI
-  STAZIONE 380 kV - 150 kV BRINDISI SUD (ESISTENTE)
- OPERE RINFORZO RETE**
-  IPOTESI CORRIDOIO CAVO AEREO
-  IPOTESI CAVO INTERRATO

D.LGS. 42/2004 - CODICE DEI BENI CULTURALI E DEL PAESAGGIO

-  D.LGS. 42/2004, ART. 142, LETT. C - FIUMI, TORRENTI, CORSI D'ACQUA
-  D.LGS. 42/2004, ART. 142, LETT. F - PARCHI E RISERVE NATURALI
-  D.LGS. 42/2004, ART. 142, LETT. G - BOSCHI E FORESTE

(fonte: quadro sinottico dei beni paesaggistici e ulteriori contesti paesaggistici del P.P.T.R. Puglia)



PROGETTO		PROGETTO DI FATTIBILITÀ TECNICO ECONOMICA PER LA REALIZZAZIONE DEL PARCO EOLICO OFFSHORE PER LA REALIZZAZIONE DEL PARCO EOLICO OFFSHORE: KALLIA.	
REV.	DATA	DESCRIZIONE	PREPARED
00	14/02/2024	Emissione definitiva	
			
CLASSIFICATION:	FORMAT:	SCALE:	SHEET:
Final Issue	A0	1:5.000 1:1	3 of 5
			
UTILIZATION SCOPE:		CLIENT CODE:	
Supporto SIA		KAI ENG TAV 014 00	