




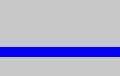

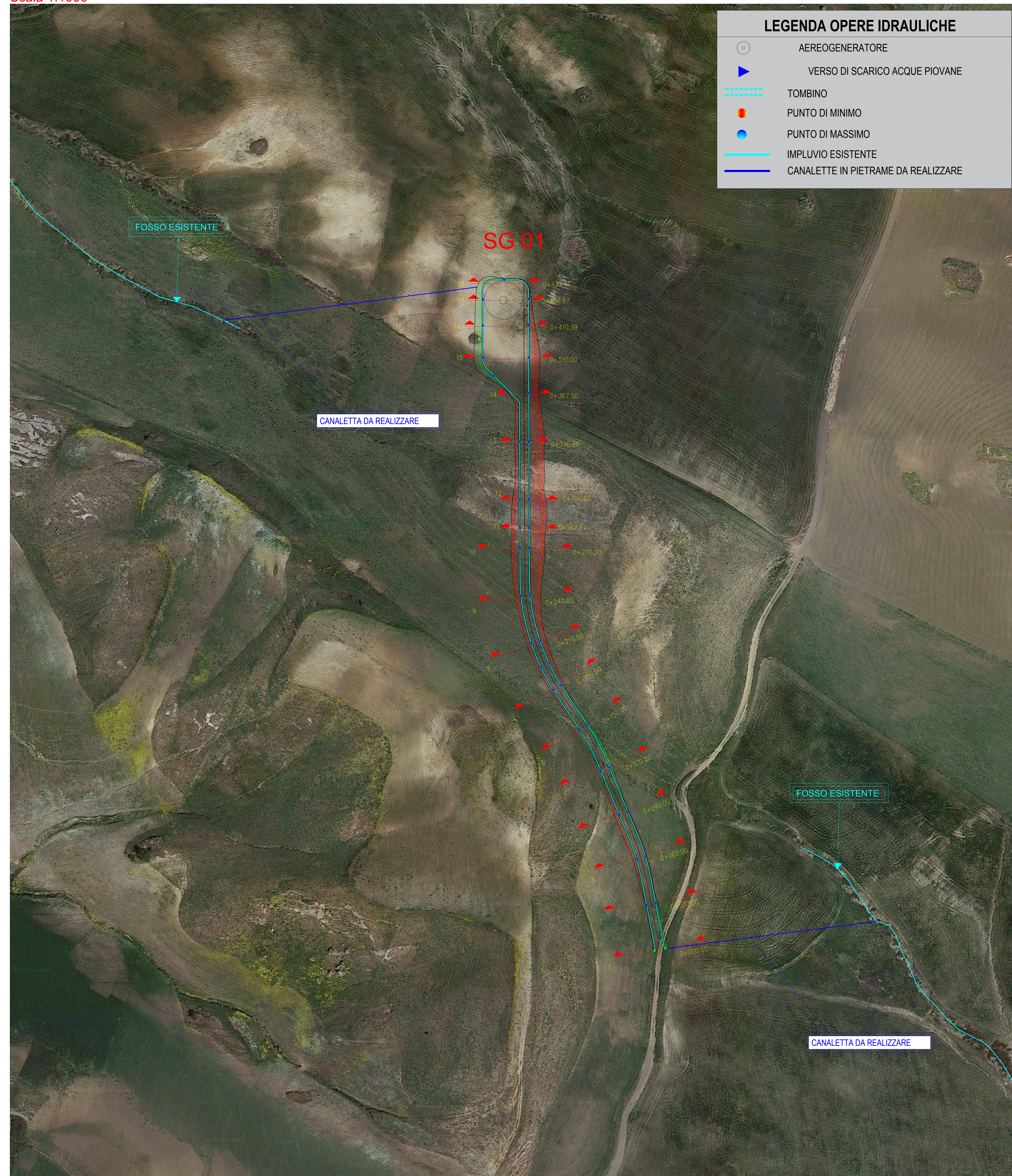
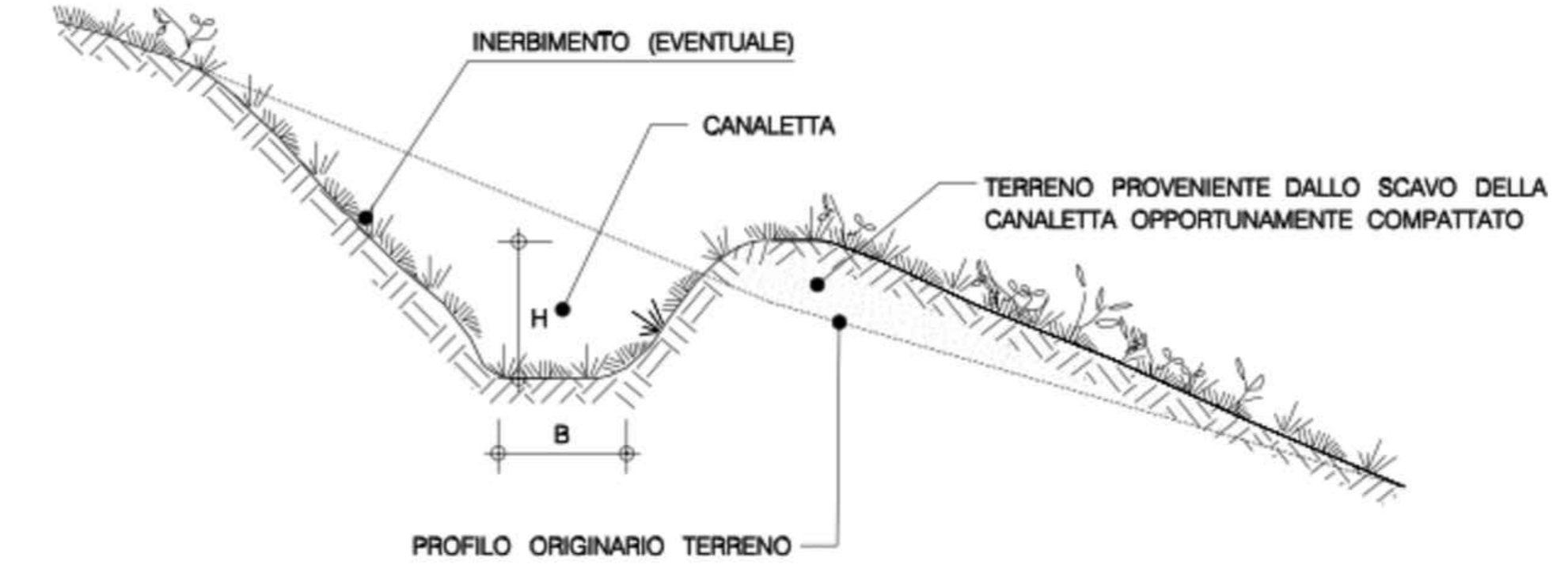


### LEGENDA OPERE IDRAULICHE

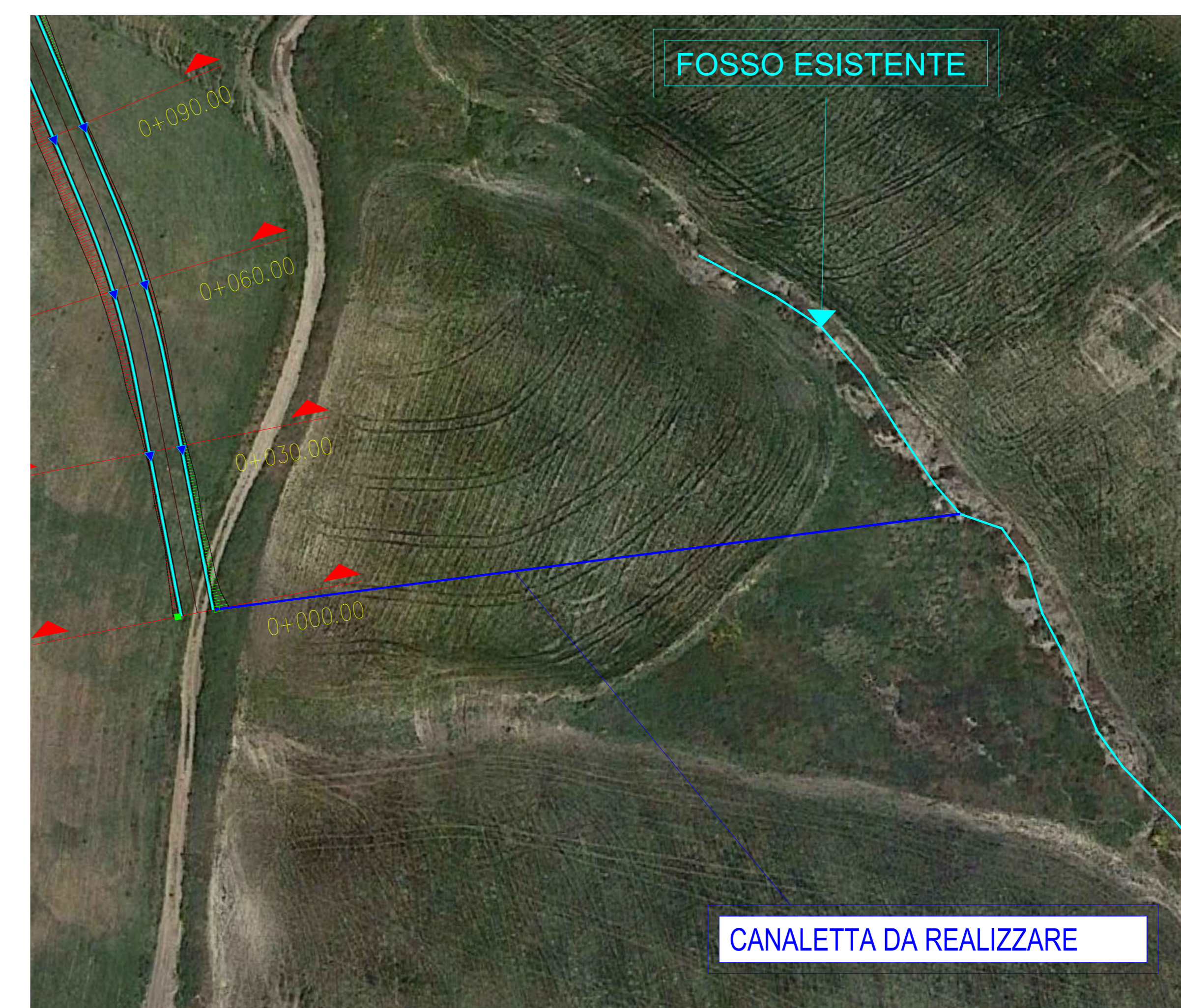
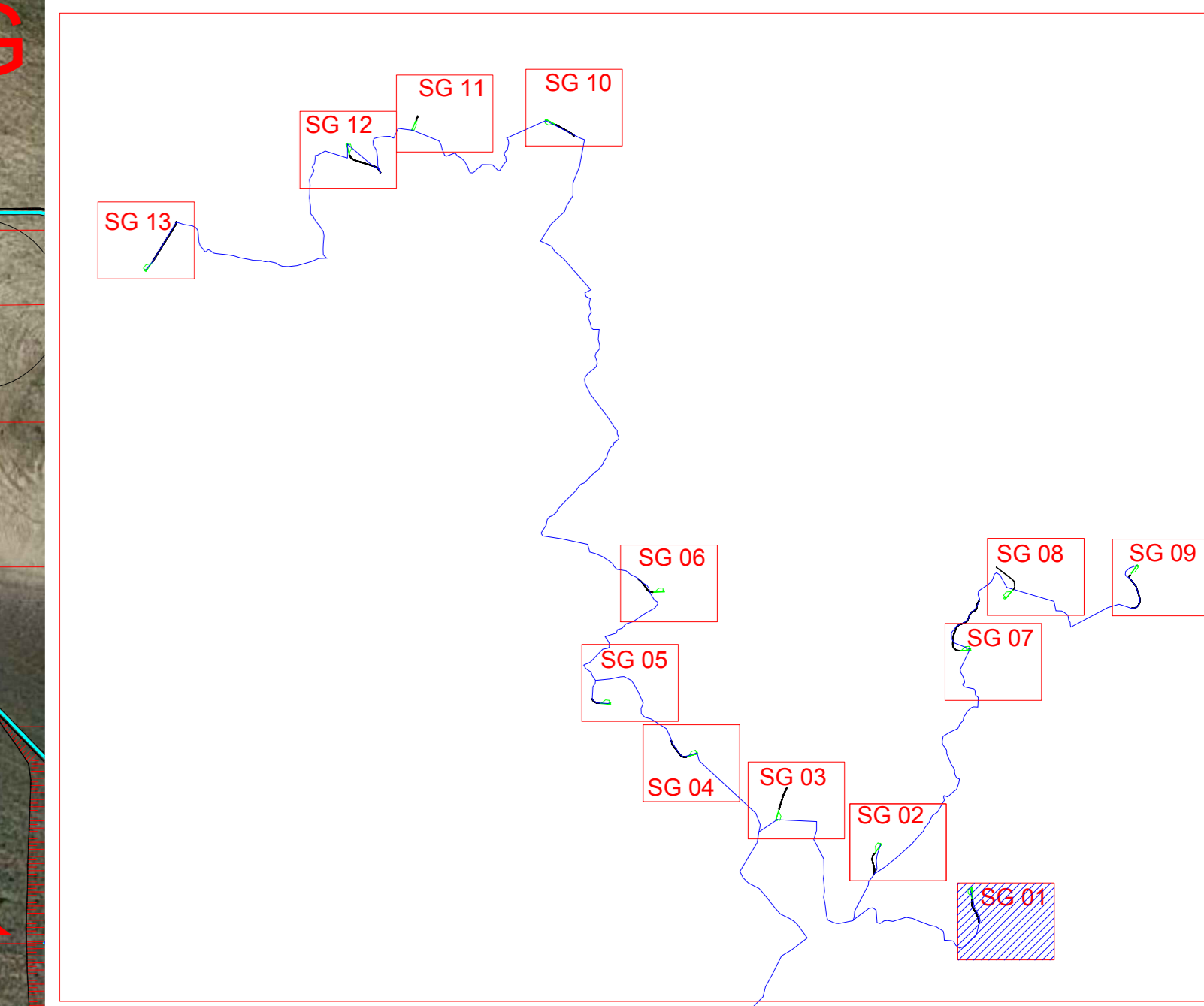
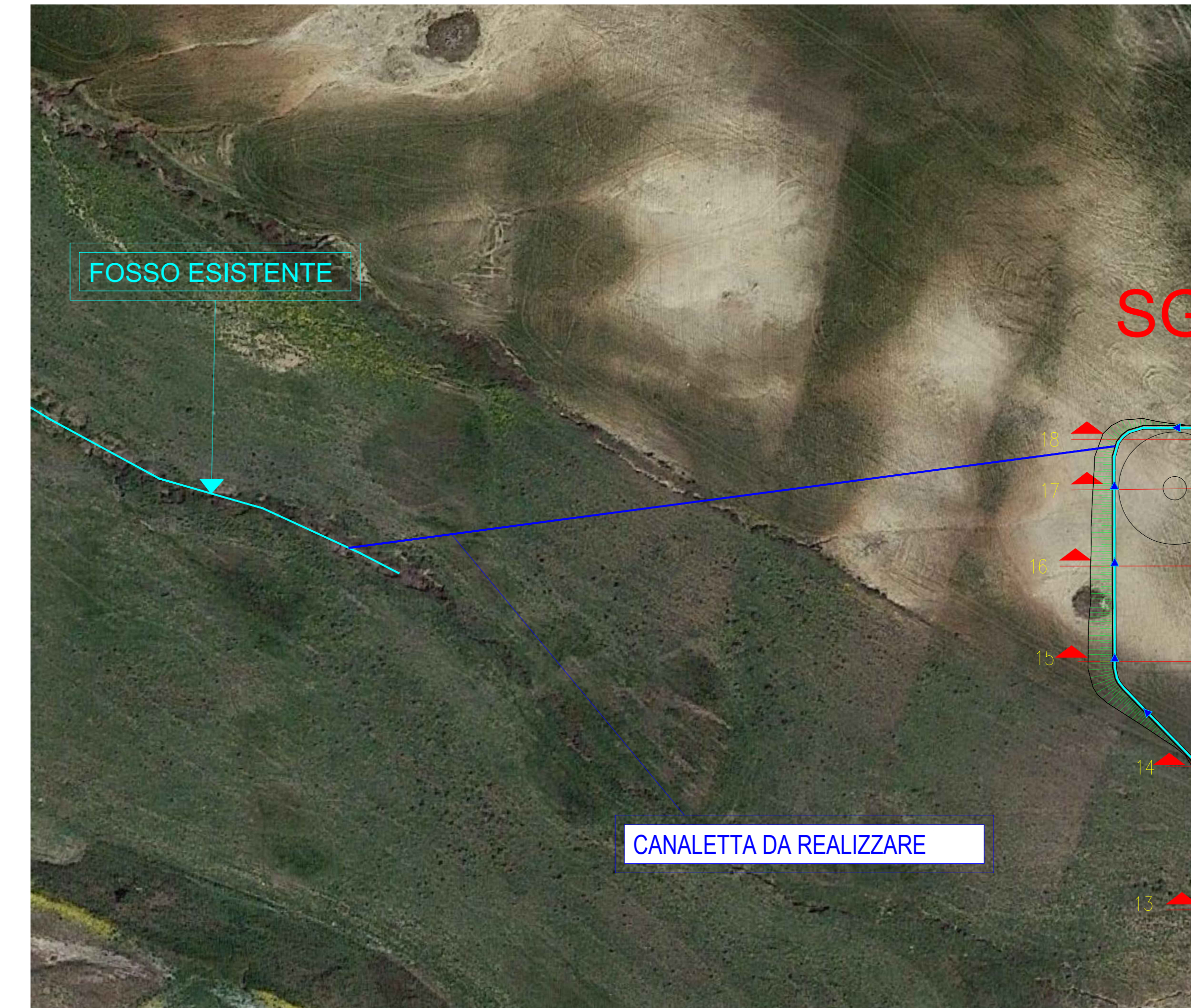
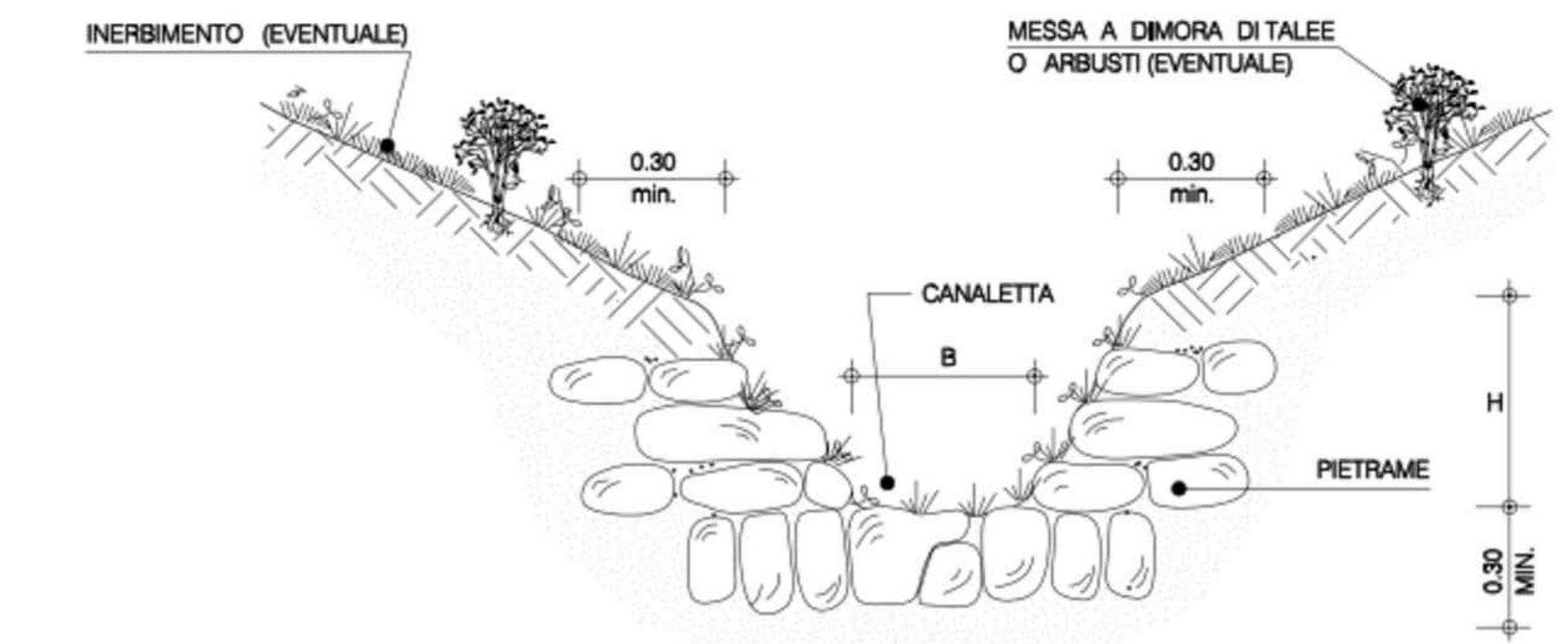
-  AEREOGENERATORE
-  VERSO DI SCARICO ACQUE PIOVANE
-  TOMBINO
-  PUNTO DI MINIMO
-  PUNTO DI MASSIMO
-  IMPLUVIO ESISTENTE
-  CANALETTE IN PIETRA DA REALIZZARE



### PARTICOLARE CANALETTA IN PIETRA CANALETTA IN TERRA - TIPOLOGIA 1



### CANALETTA RIVESTITA CON PIETRA TIPOLOGIA 3



OGGETTO: Progetto di realizzazione di un parco eolico della potenza di 85,8 MW denominato "CATERINA I" situato nei comuni di Sclafani Bagni, Valledolmo, Caltavuturo, Polizzi Generosa, Castellana Sicula in provincia di Palermo (PA) e Villalba, in provincia di Caltanissetta (CL).

ELABORATO: PLANIMETRIA DELLE OPERE DI REGIMAZIONE DELLE ACQUE SUPERFICIALI - SG01



PROPRONTE: AEI WIND PROJECT X S.R.L. P.I. 17246891007 Via Saviole 78, 00198 Roma

PROGETTAZIONE: Ing. Carmen Martone Inc. n. 1872 Ordine Ingegneri Potenza C.F. WRTCMN730564703E EDM PROJECT

Geol. Raffaele Nardone Inc. n. 245 Ordine Geologi Basilicata C.F. NBRDFL719444509H EGM PROJECT S.R.L. VIA VERASTRO 15/A 85100 POTENZA (PZ) P.IVA 02094310766 REA PZ 306983

Rev.	Data	Descrizione	Eseguito	Verificato	Approvato
00	DICEMBRE 2023	EMISSIONE			