


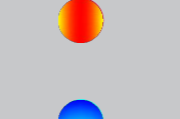



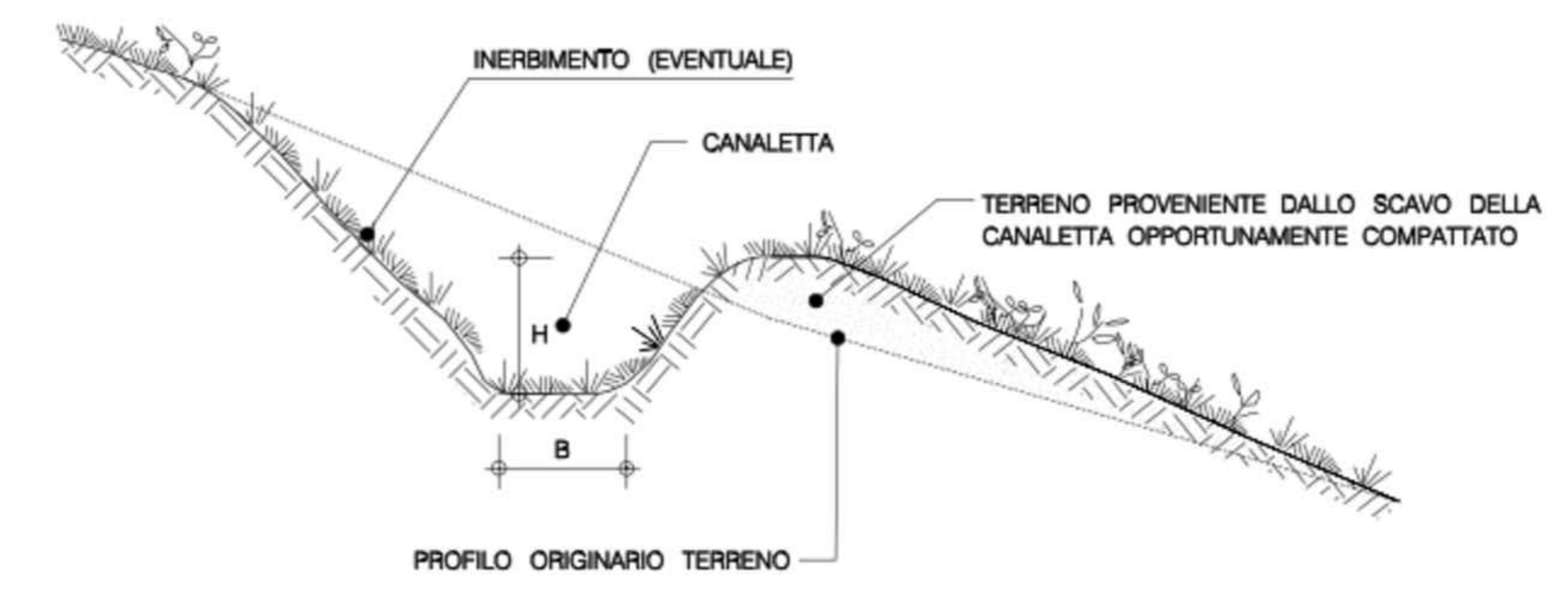


LEGENDA OPERE IDRAULICHE

-  AEREOGENERATORE
-  VERSO DI SCARICO ACQUE PIOVANE
-  TOMBINO
-  PUNTO DI MINIMO
-  PUNTO DI MASSIMO
-  IMPLUVIO ESISTENTE
-  CANALETTE IN PIETRAMME DA REALIZZARE

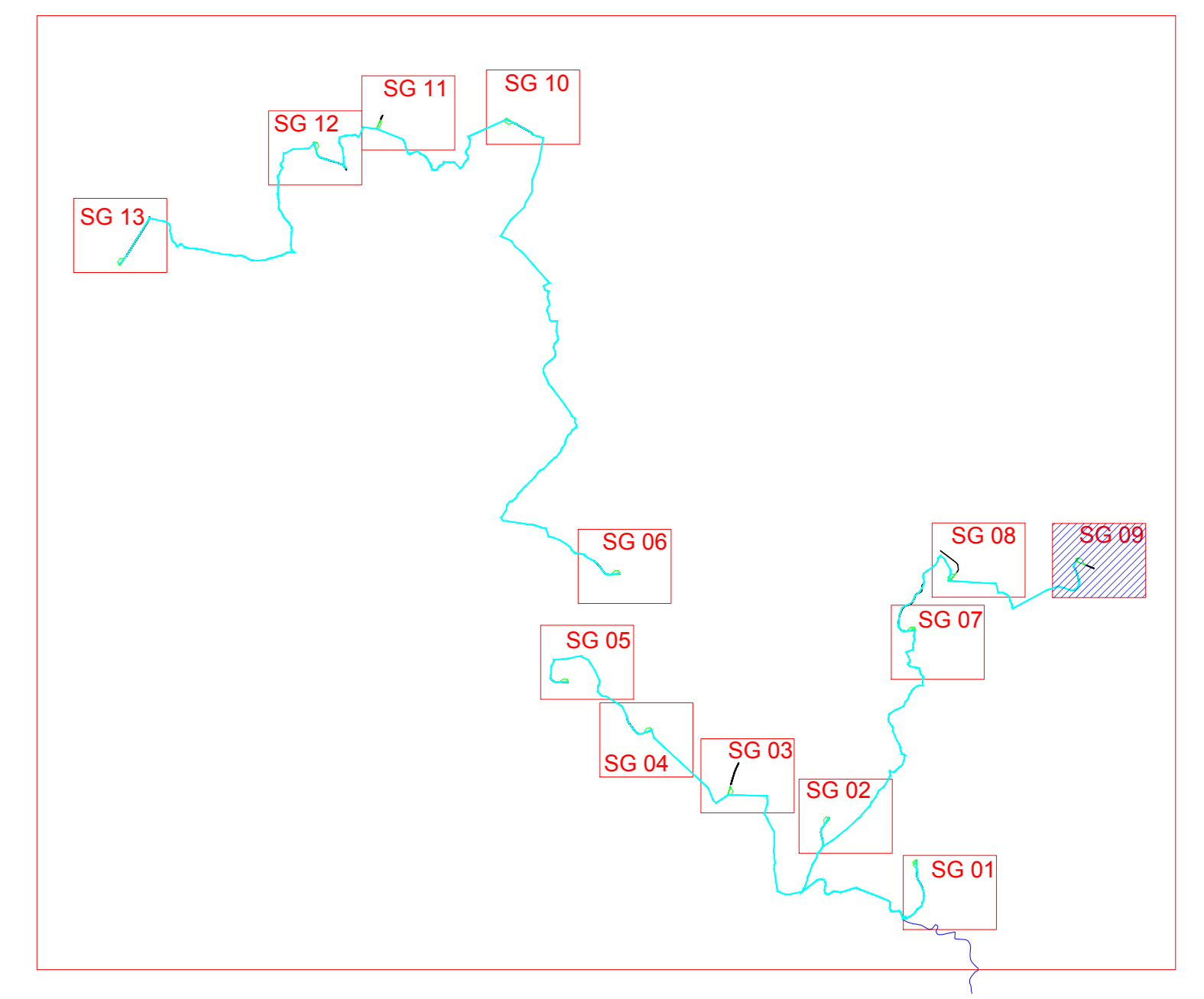
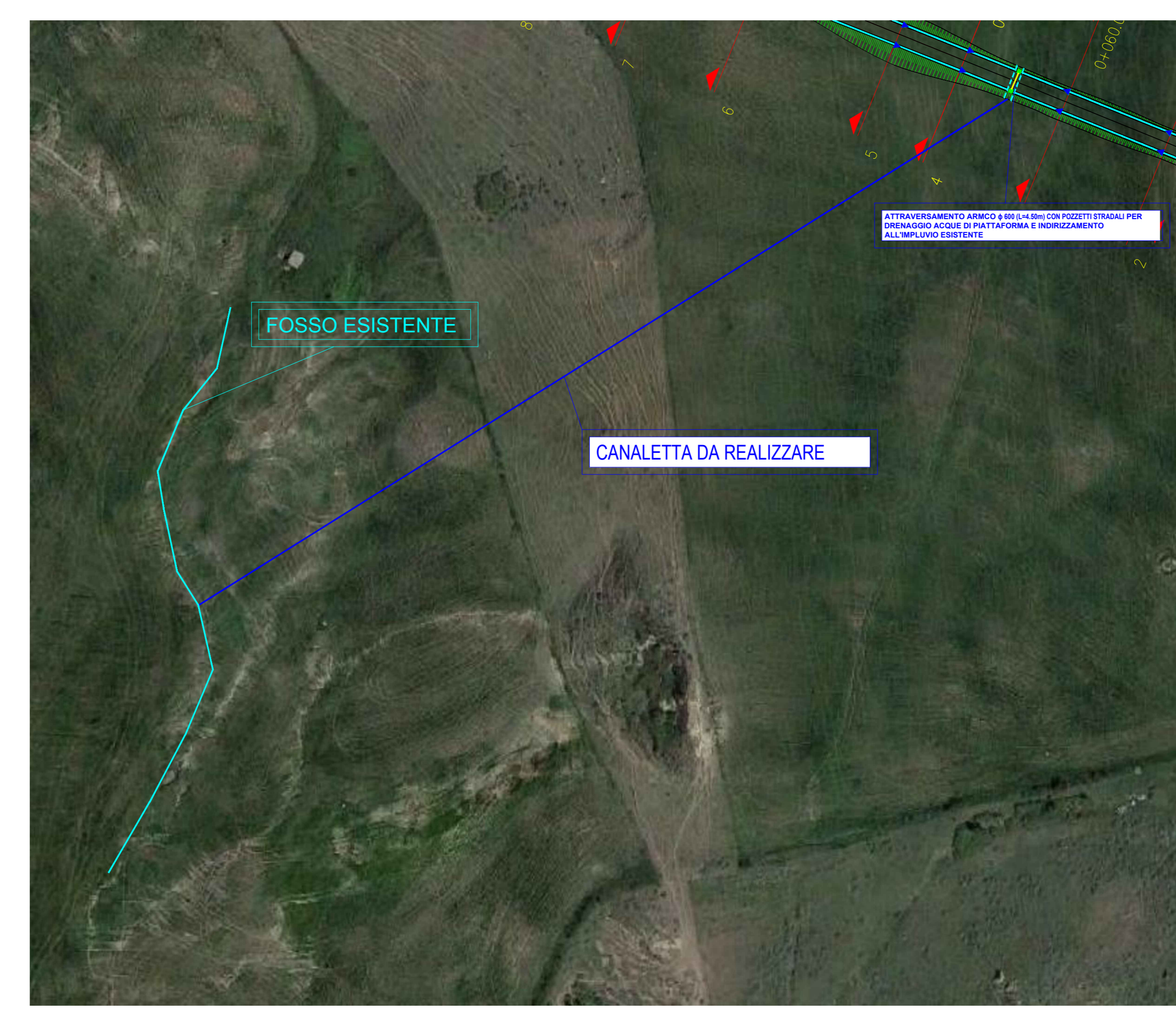
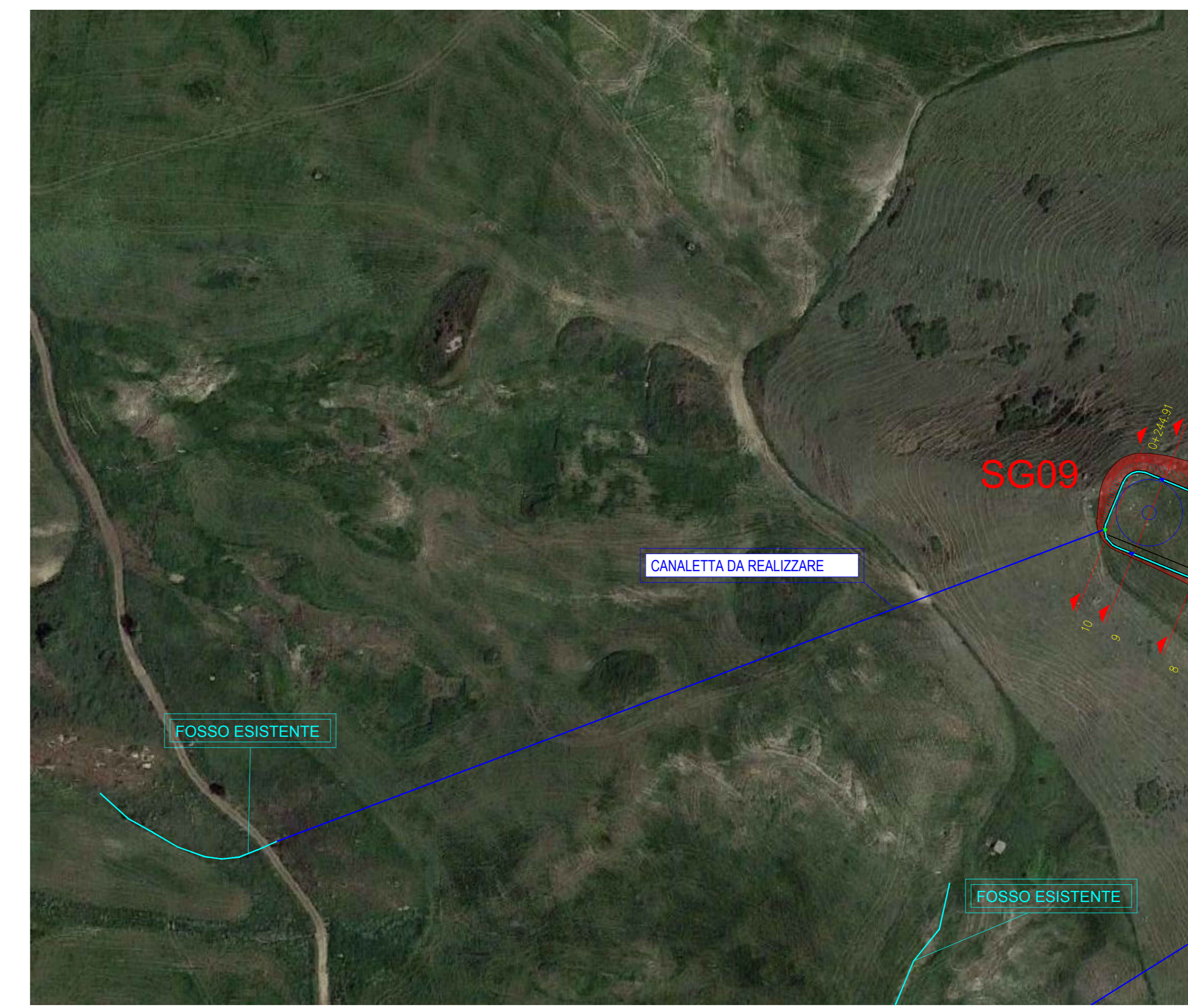
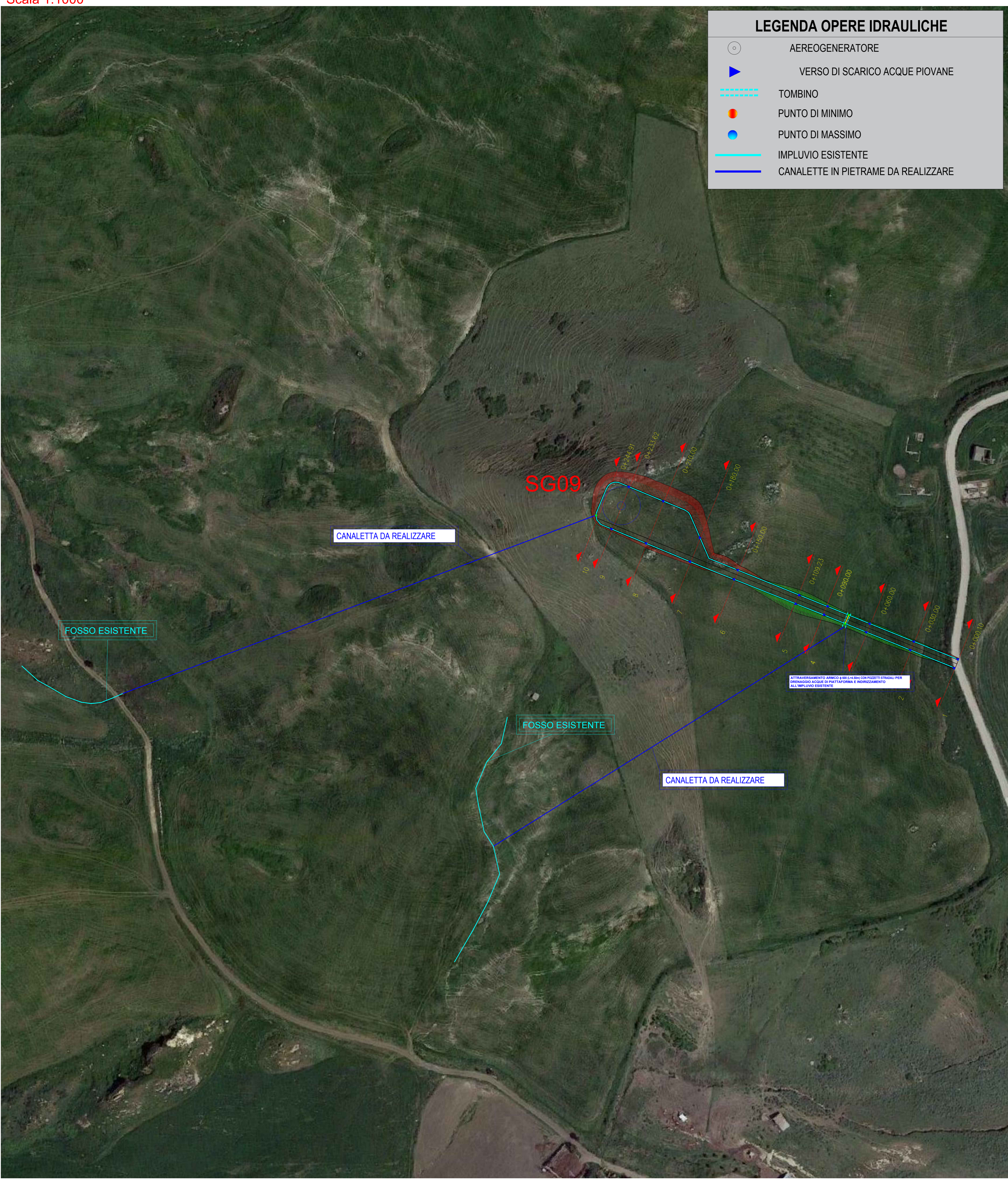
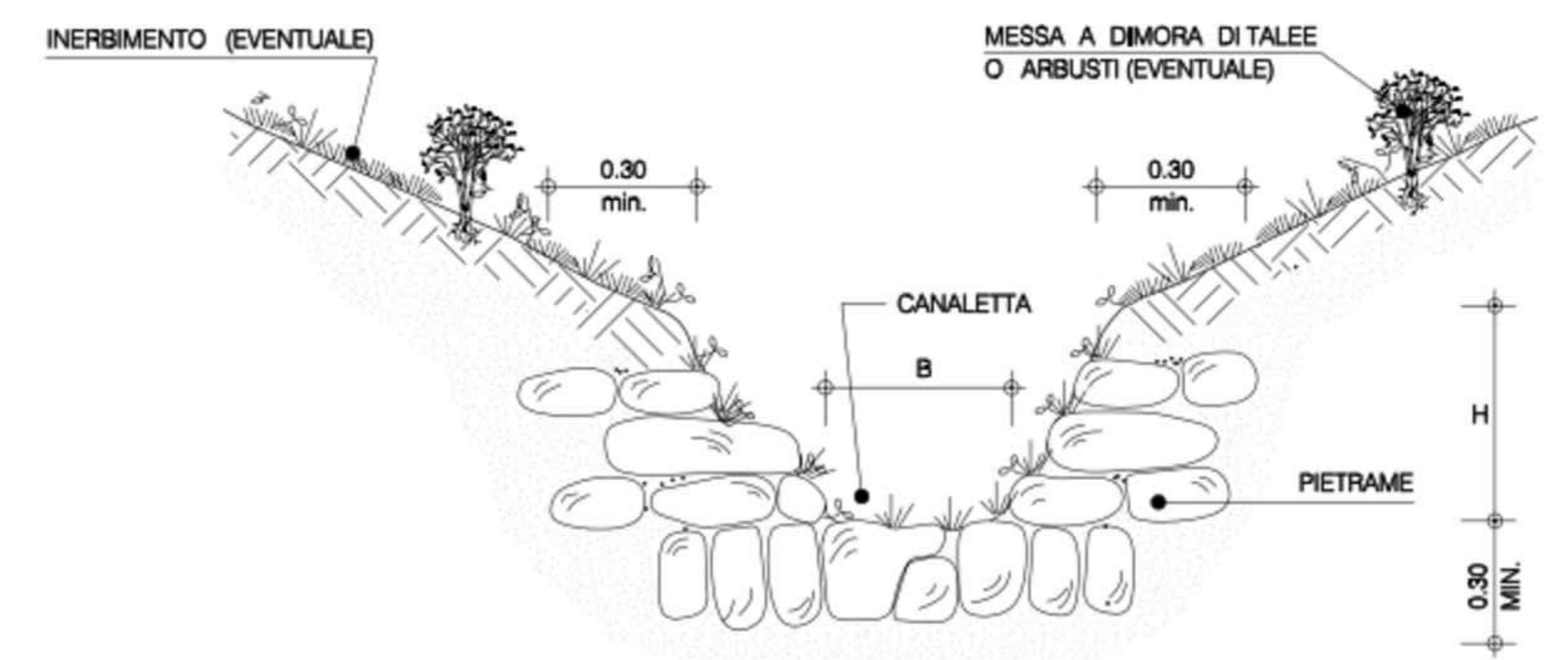
PARTICOLARE CANALETTA IN PIETRAMME


CANALETTA IN TERRA - TIPOLOGIA 1




CANALETTA RIVESTITA CON PIETRAMME

TIPOLOGIA 3







REGIONE SICILIA




PROVINCIA DI PALERMO
COMUNE DI SCLAFANI BAGNI




COMUNE DI VALLEDOLMO




COMUNE DI CALTAFUTURO



COMUNE DI POLIZZI GENEROSA



COMUNE DI CASTELLANA SICULA



COMUNE DI VILLABBA

OGGETTO: Progetto di realizzazione di un parco eolico della potenza di 85,8 MW denominato "CATERINA I" situato nei comuni di Sclafani Bagni, Valledolmo, Caltafuttoro, Polizzi Generosa, Castellana Sicula in provincia di Palermo (PA) e Villalba, in provincia di Caltanissetta (CL).

ELABORATO: PLANIMETRIA DELLE OPERE DI REGIMAZIONE DELLE ACQUE SUPERFICIALI - SG09

PROFONTE: AEI WIND PROJECT X S.R.L.
P.I. 17264920807
Via Savola 7A,
00158 Roma

Codice fiscale e n. iscr. al Registro Imprese: 17264919807
Numero REA: 08/171996
Domenica digitale: aeiwindproject@gmail.it

PROGETTAZIONE: Ing. Carmen Martone
Isct. n. 1872
Ordine Ingegneri Potenza
C.F. NRTCM730564703E

EGM PROJECT

Geol. Raffaele Nardone
Isct. n. 243
Ordine Geologi Basilicata
C.F. NRD017110445091

EGA PROJECT S.R.L.
VIA VERDESDIO 15/A
85100- POTENZA (PZ)
P.IVA 02094310766
REA PZ 026983

Rev.	DATA	DESCRIZIONE	ESEGUITO	VERIFICATO	APPROVATO
00	DICEMBRE 2023	EMISSIONE			