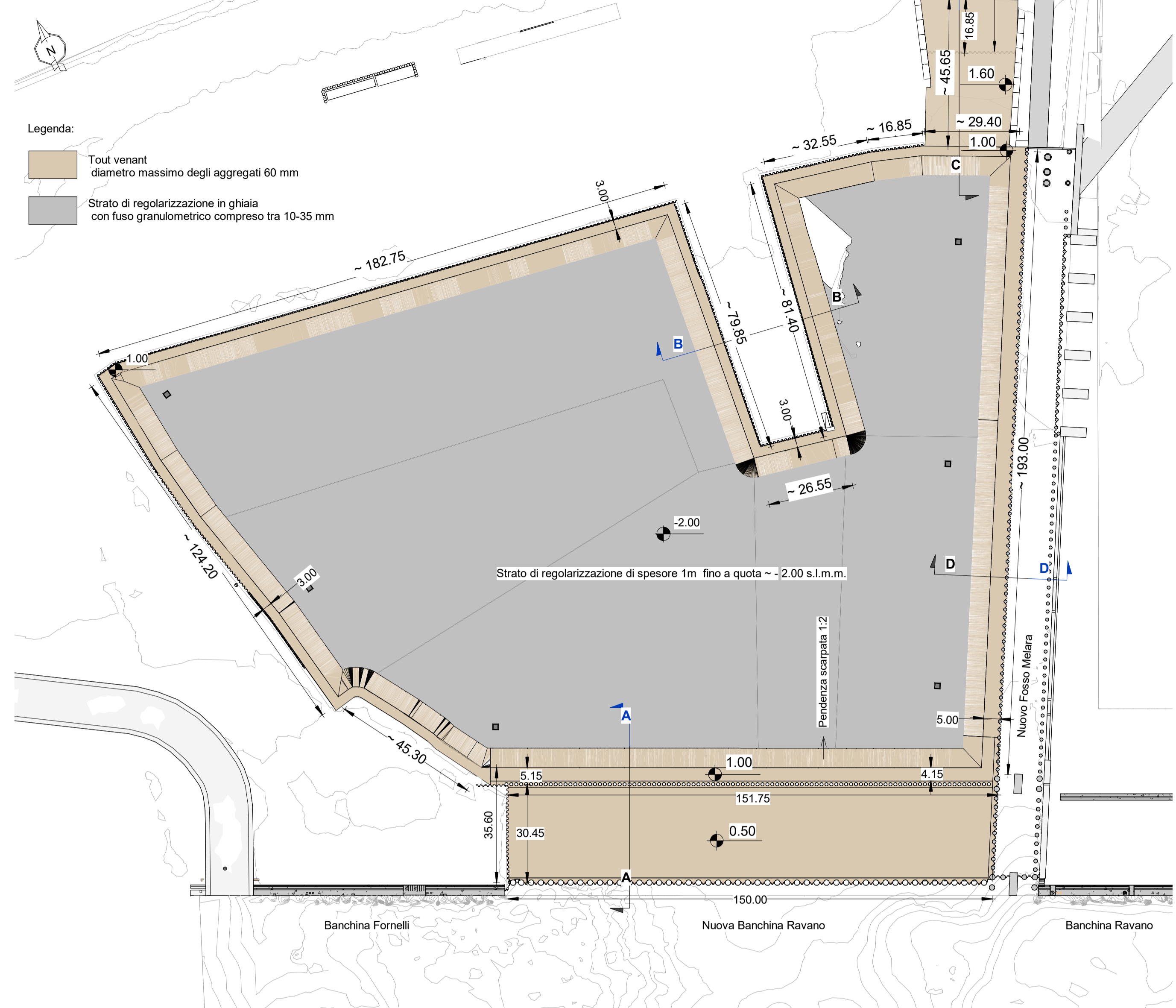


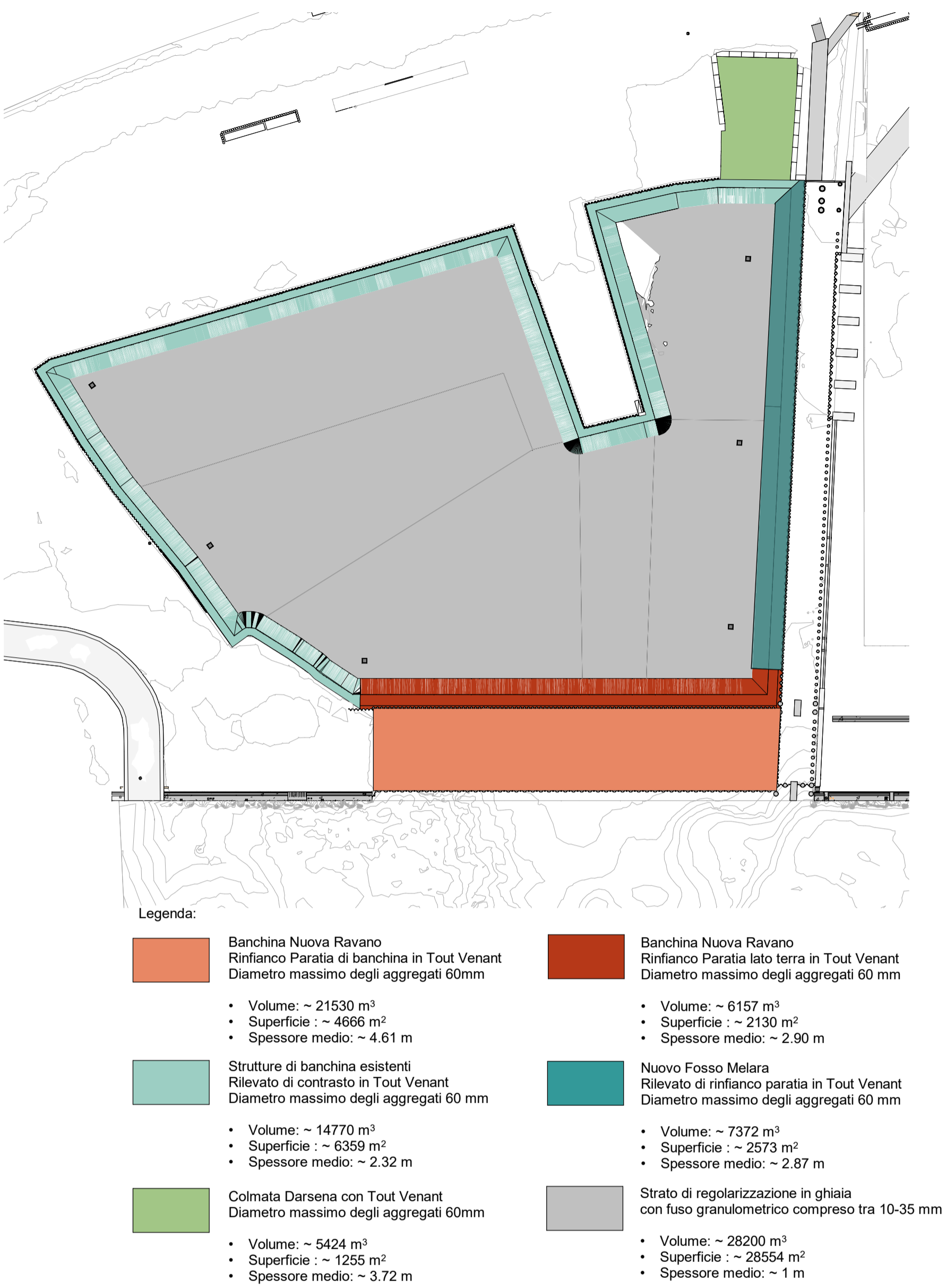
**Planimetria - Rilevato Marina del canaletto**

Scala 1:1000

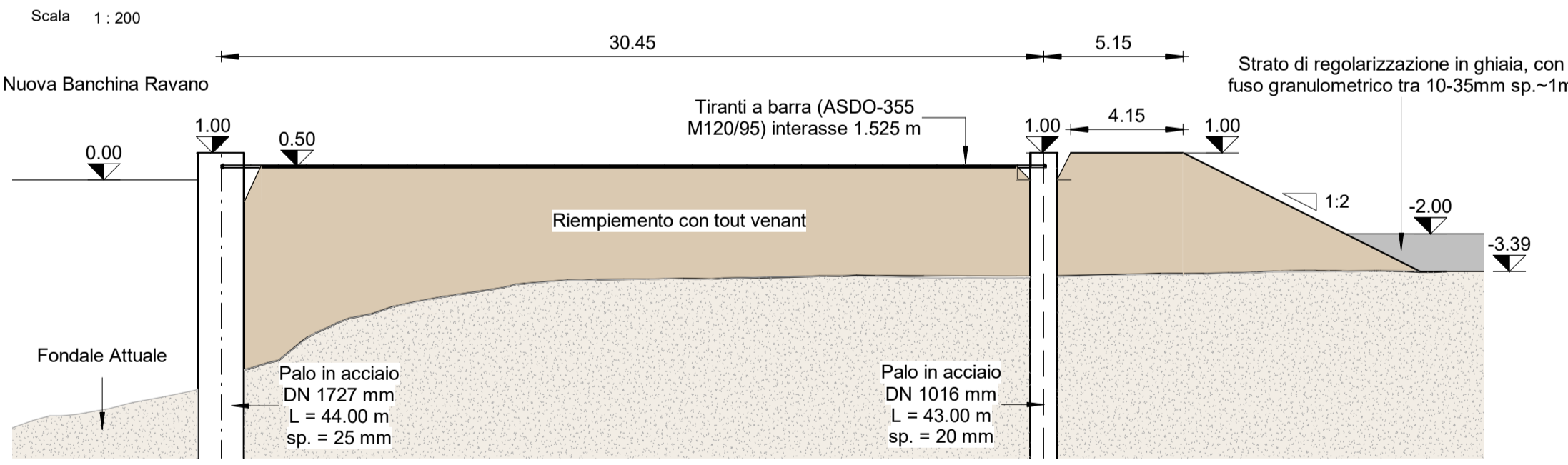


**Planimetria con indicazione delle volumetrie**

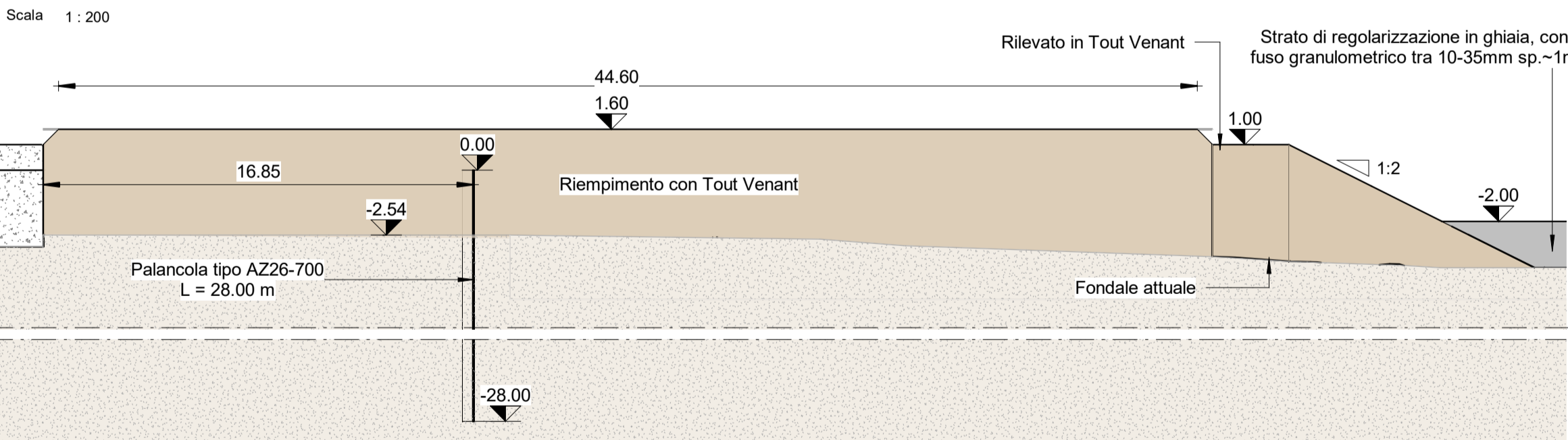
Scala 1:1500



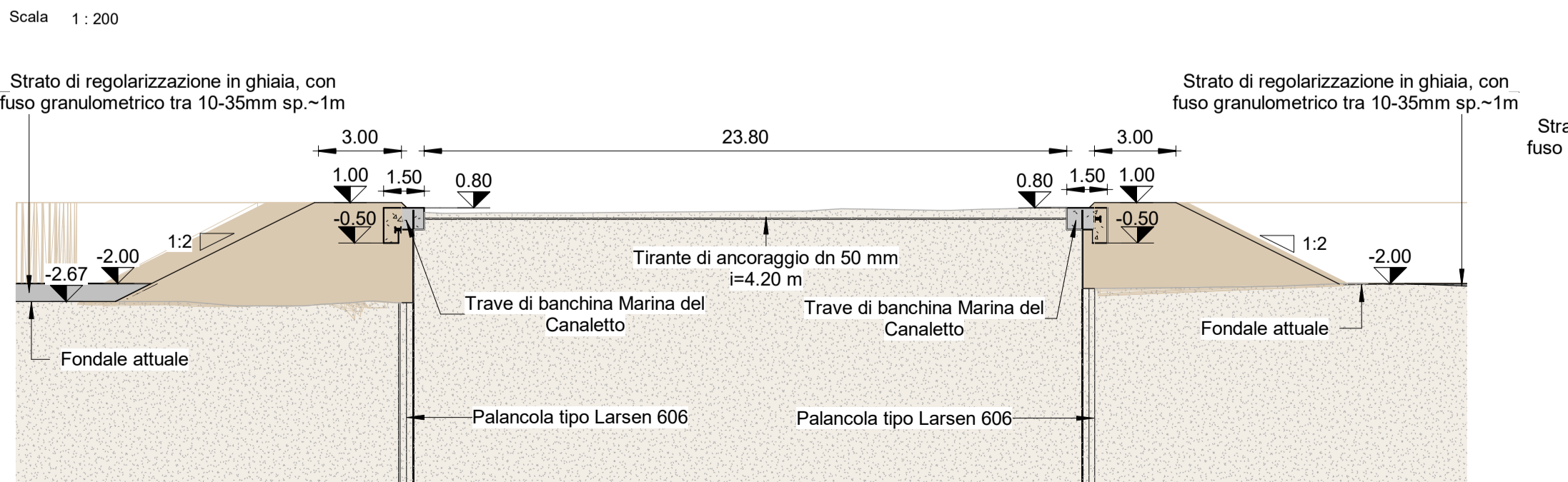
**Sezione A-A**



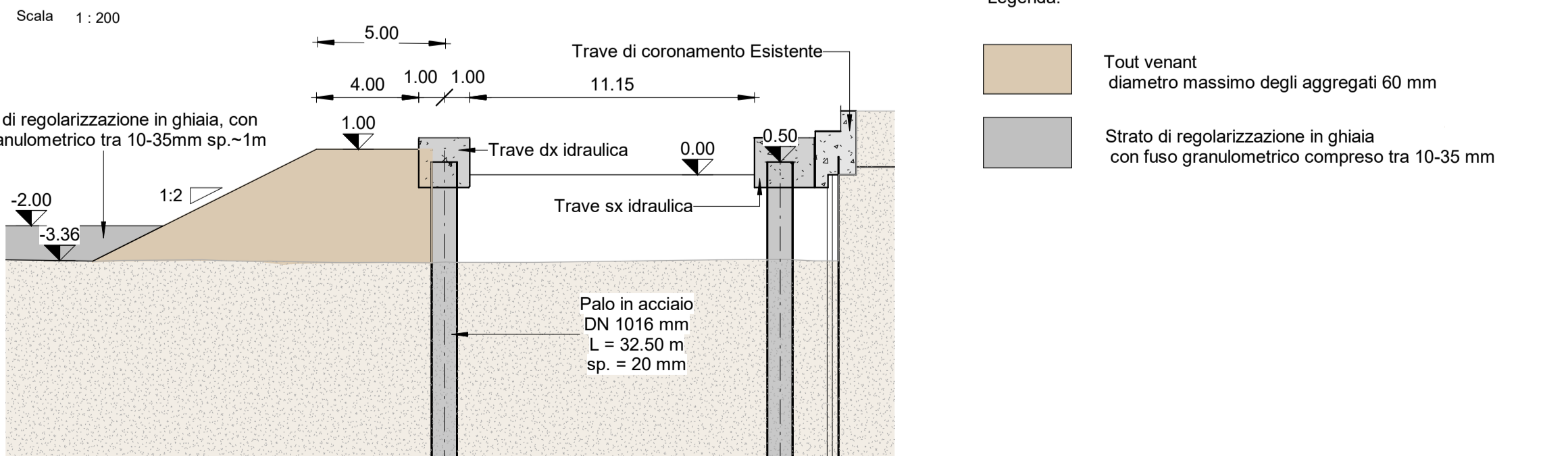
**Sezione C-C**



**Sezione B-B**



**Sezione D-D**



**PROGETTO ESECUTIVO**

TITOLO ELABORATO  
Colmata Marina del Canaletto – Rinfiacco banchine esistenti per abbassamento falda

CODICE ELABORATO: 21 08 PE TR02 0  
SCALA: Come indicato

Rev.	Data	Causale
0	05/05/2023	Emissione finale per verificatore

**IL COMMITTENTE**  
LSCT S.p.A.  
Viale San Bartolomeo, 20  
19128 - La Spezia (SP)  
C.F. 0007290115 - P.IVA 00659620114

**IL PROGETTISTA**  
Modimar Project S.r.l.  
Via Annafa, 72  
00199 - Roma (RM)  
C.F. - P.IVA 0606151009

**Geotechnical Engineering Services S.r.l.**  
Via Sandro Pertini, 55 - 60029 Tolentino (MC)  
C.F. - P.IVA 0081700432

DIMENSIONI FOGLIO: A1  
Disegnato: Corinaldesi  
Controllato: Sanzone  
Approvato: Tartagliani

Note: