

GIUNTO TIPO BETA 60_200

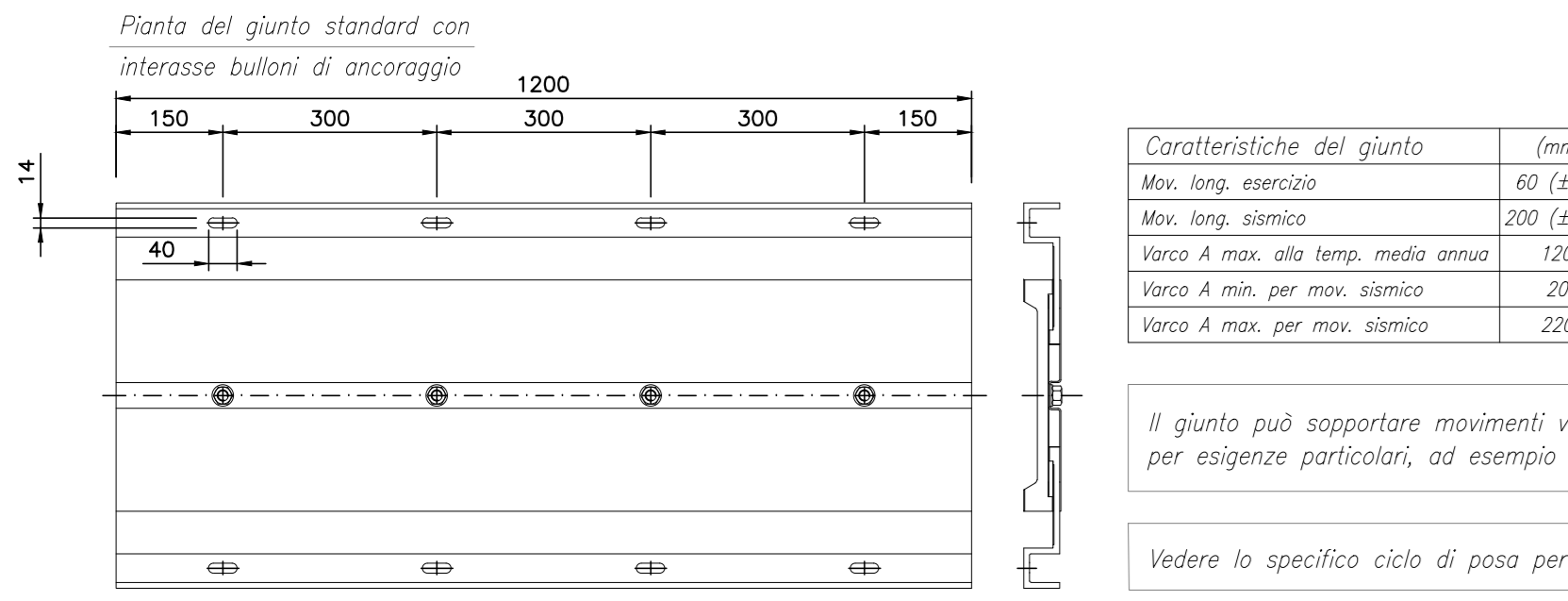
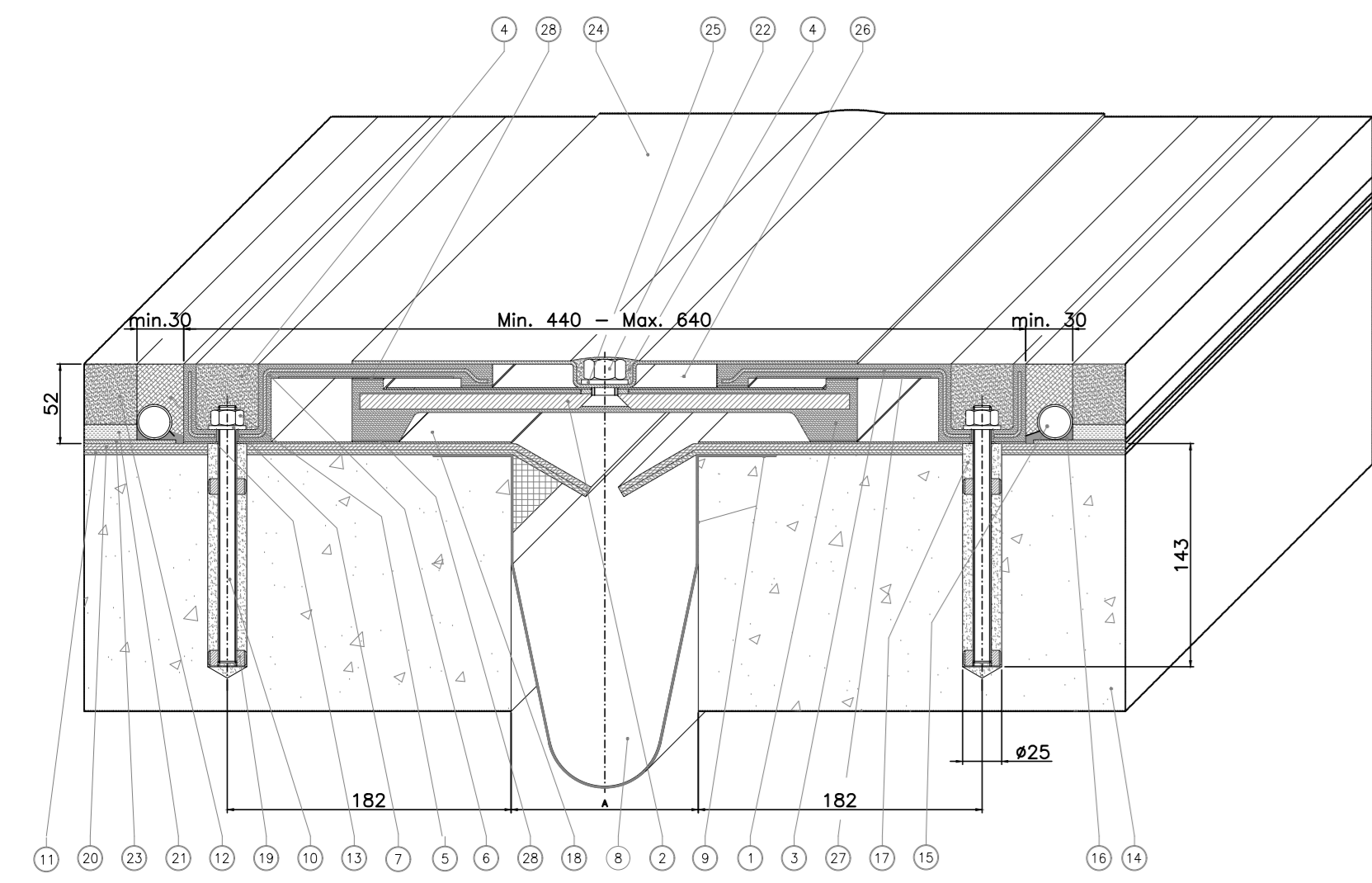


Table of components for GIUNTO TIPO BETA 60_200 joint with material specifications.

Caratteristiche del giunto (mm) table listing joint characteristics.

Il giunto può sopportare movimenti verticali fino a ±50 mm...

Vedere lo specifico ciclo di posa per la modalità di installazione.

GIUNTO TIPO BETA 60_100

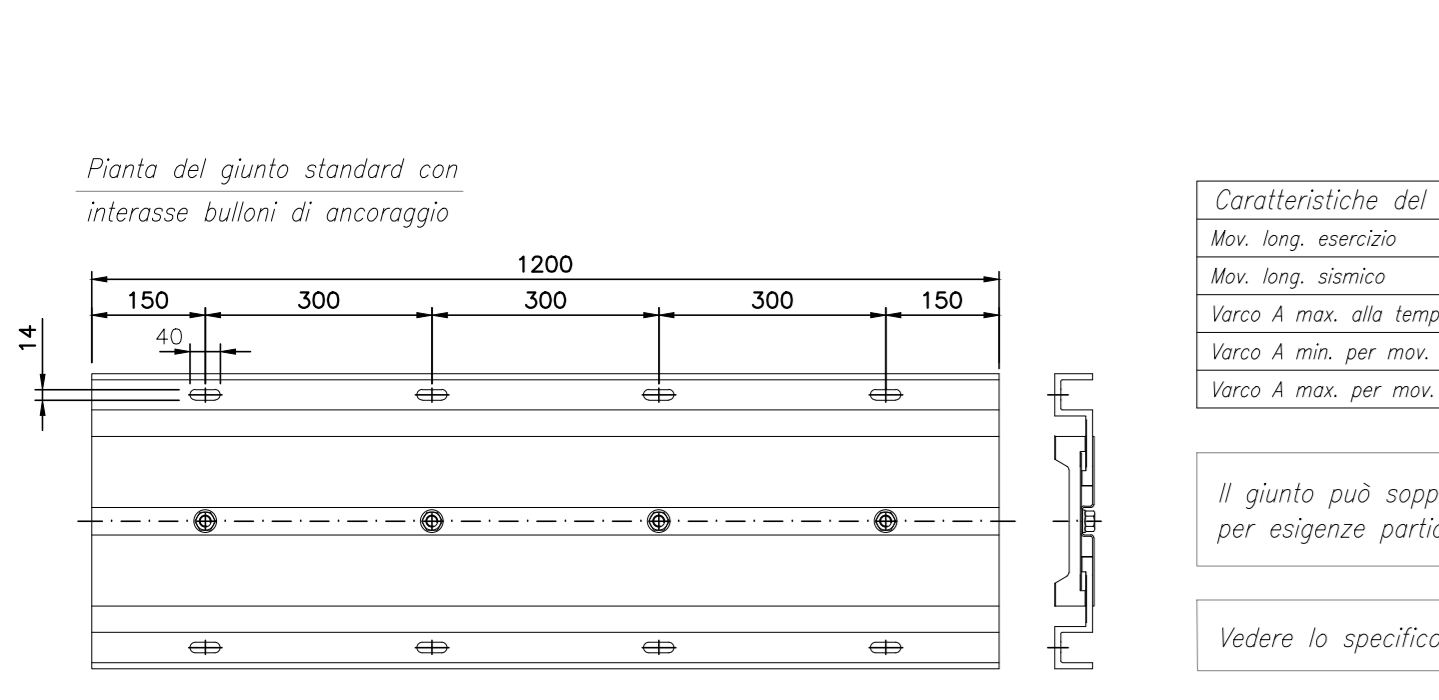
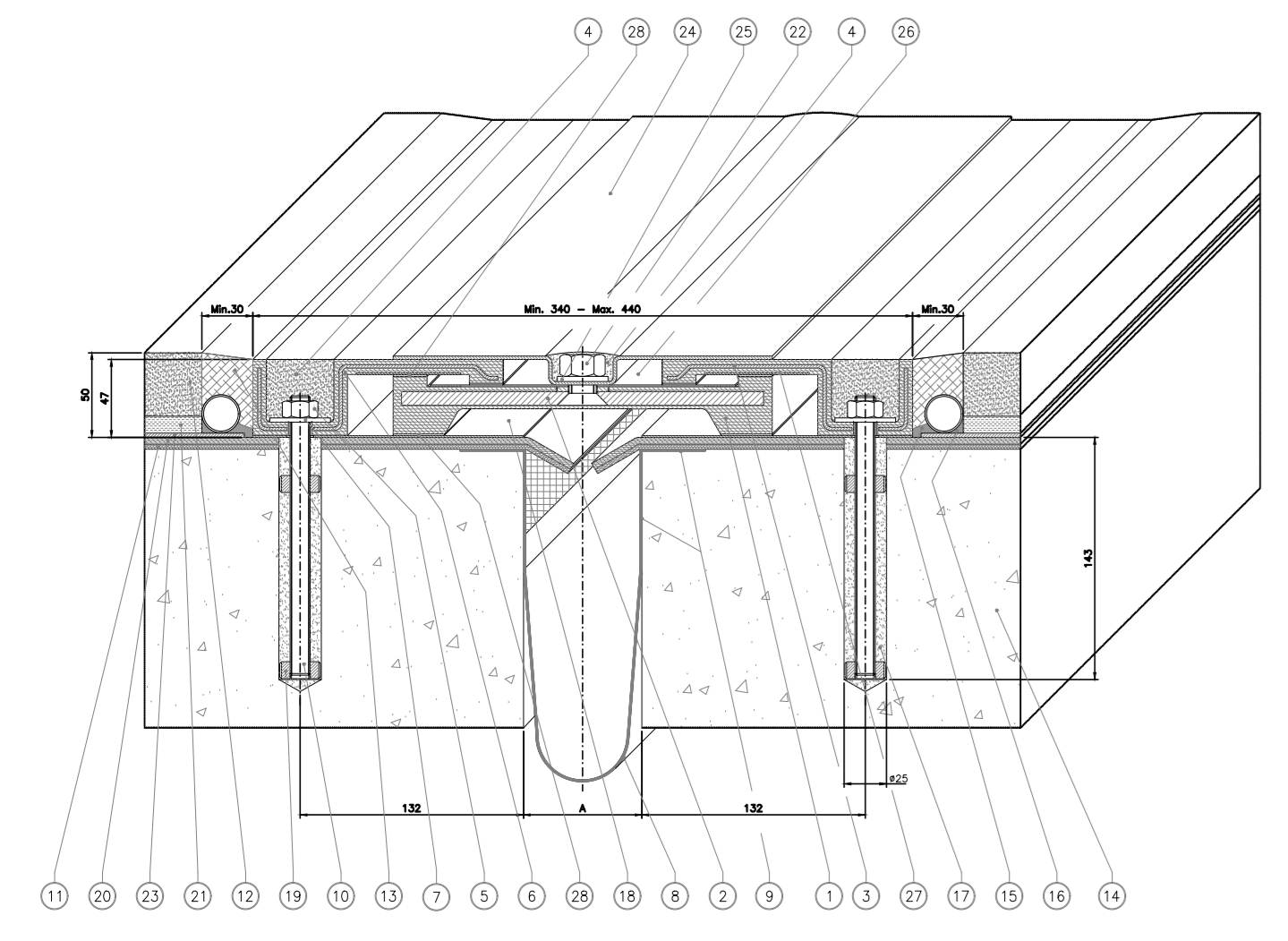


Table of components for GIUNTO TIPO BETA 60_100 joint with material specifications.

Caratteristiche del giunto (mm) table listing joint characteristics.

Il giunto può sopportare movimenti verticali fino a ±50 mm...

Vedere lo specifico ciclo di posa per la modalità di installazione.

GIUNTO TIPO BETA 60_150

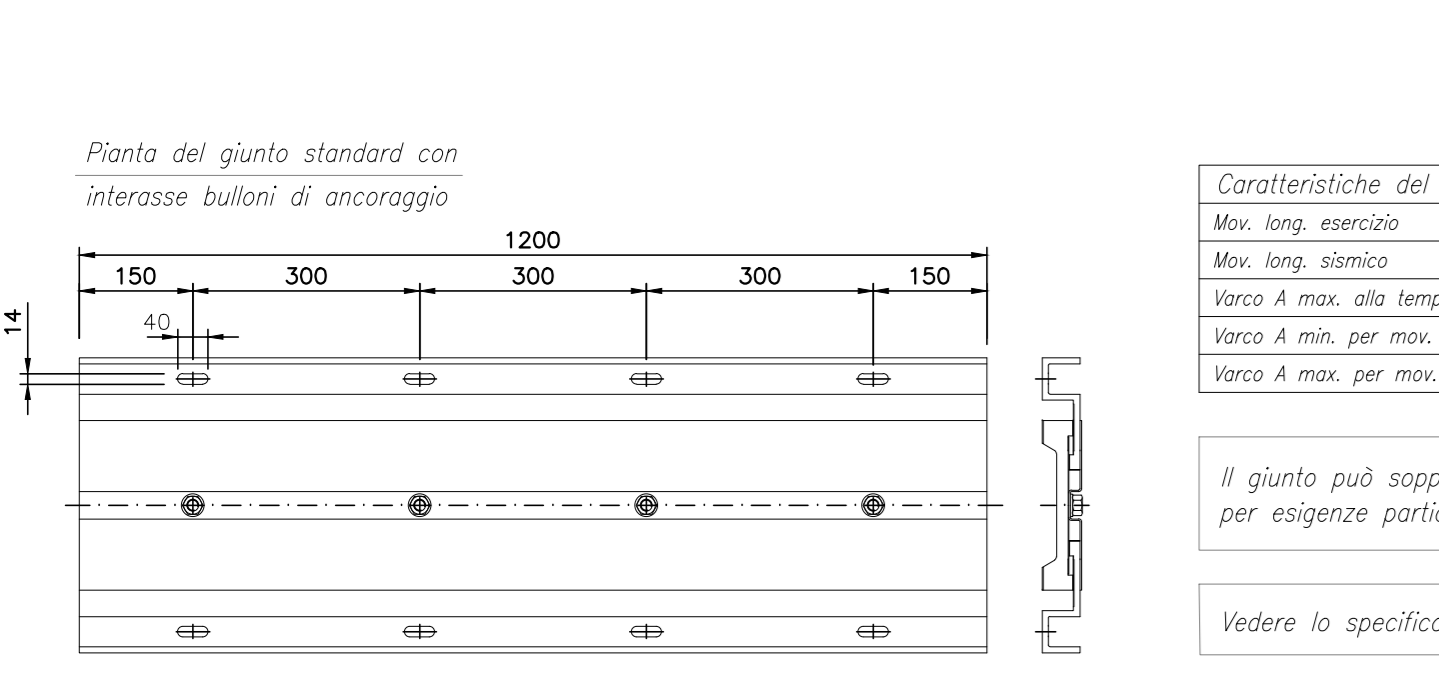
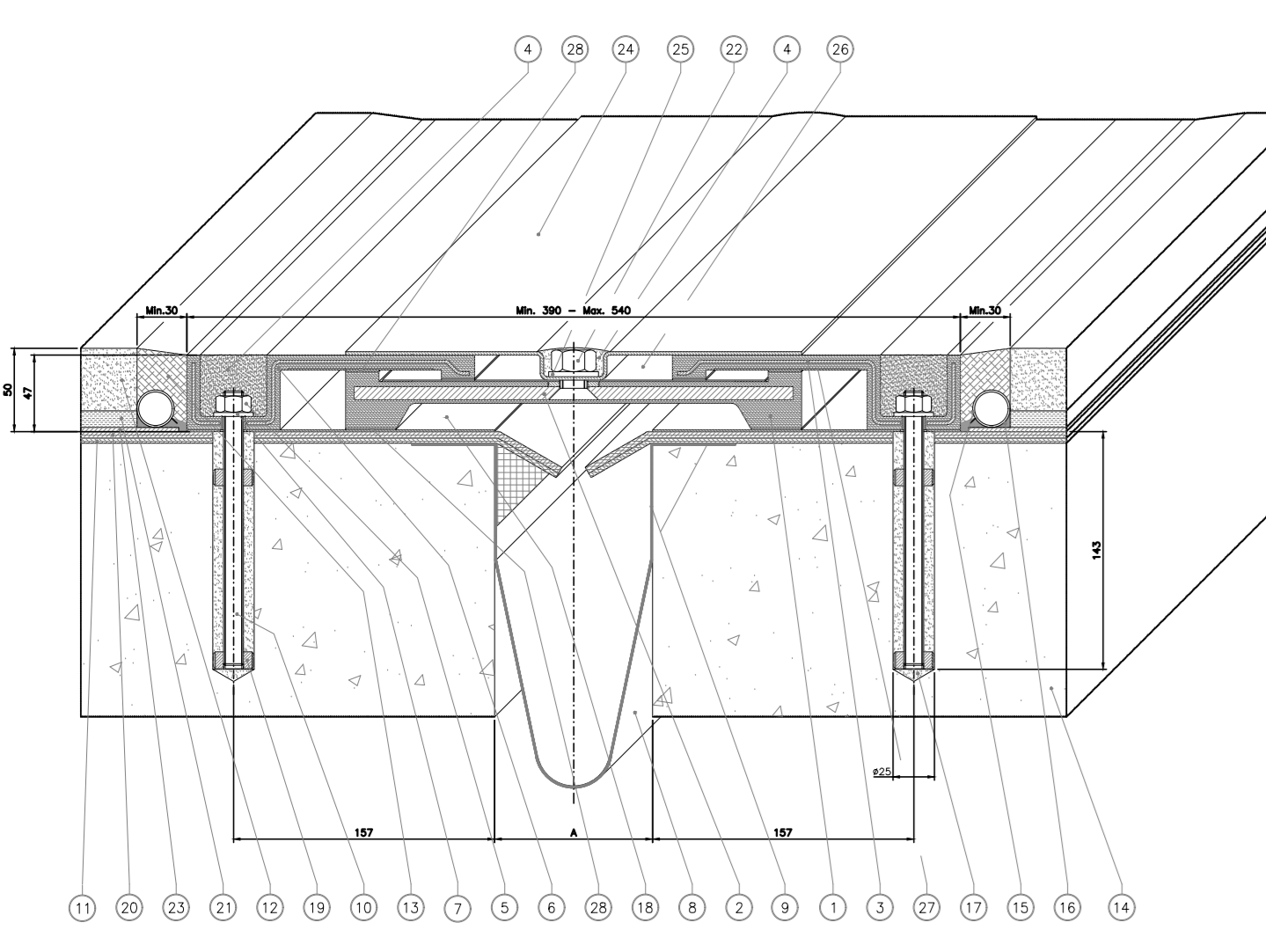


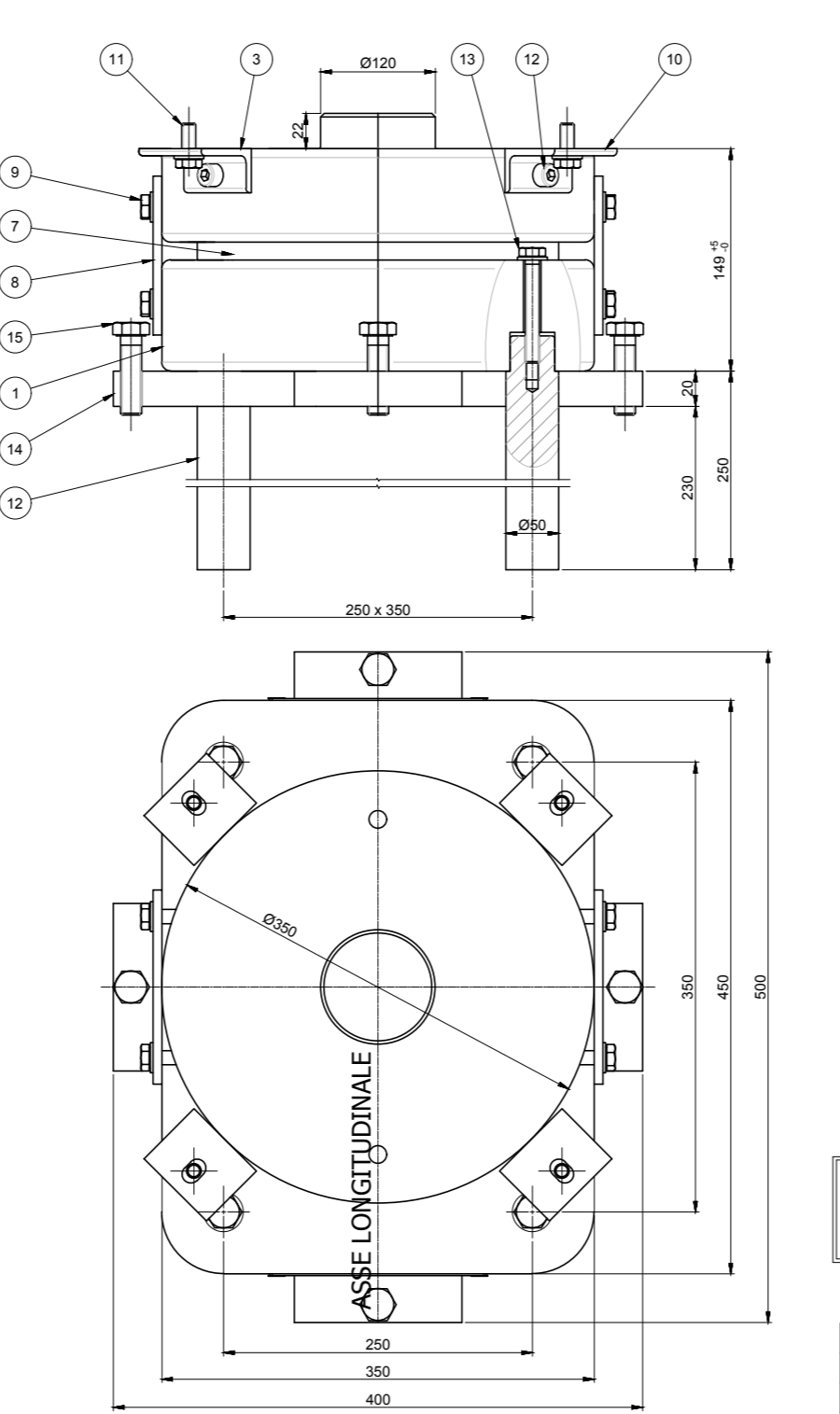
Table of components for GIUNTO TIPO BETA 60_150 joint with material specifications.

Caratteristiche del giunto (mm) table listing joint characteristics.

Il giunto può sopportare movimenti verticali fino a ±50 mm...

Vedere lo specifico ciclo di posa per la modalità di installazione.

APPOGGIO TIPO VF 100-100 D



CARICO VERTICALE MASSIMO Vu,v = 680 kN...

Table of components for APPOGGIO TIPO VF 100-100 D with material specifications.

APPOGGIO TIPO M 75_160-50 D

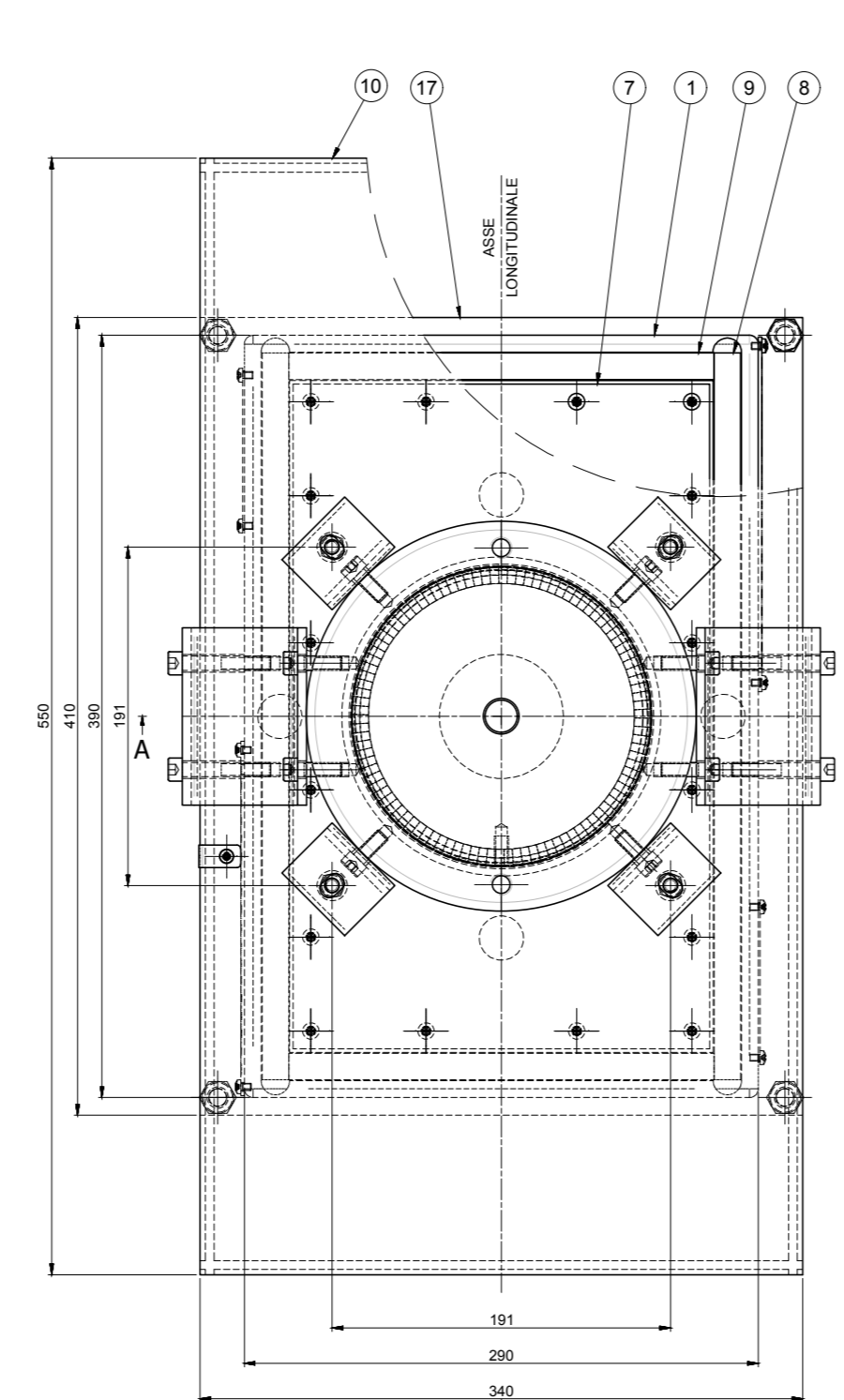


Table of components for APPOGGIO TIPO M 75_160-50 D with material specifications.

APPOGGIO TIPO UL 75_160-40 D

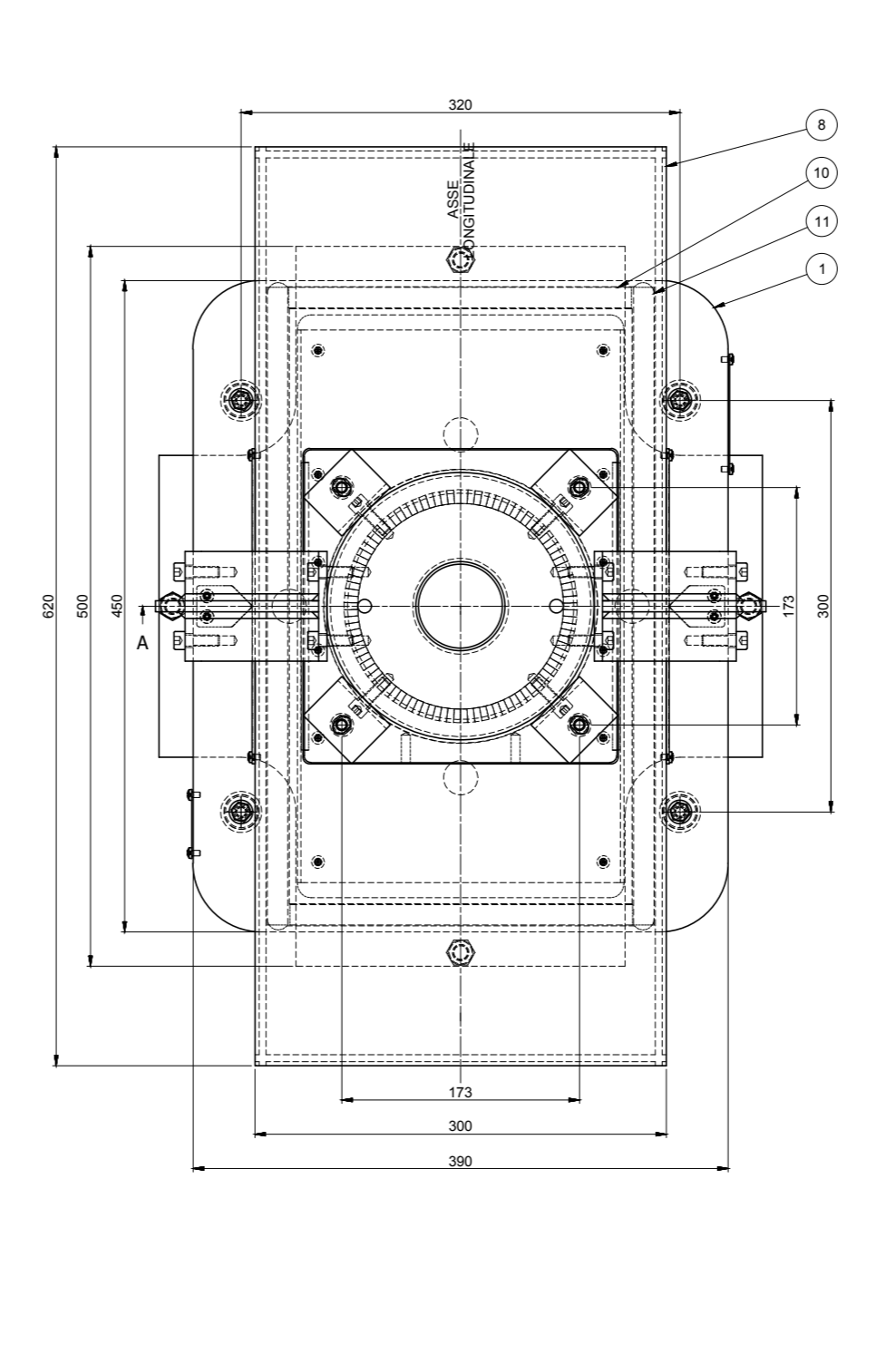


Table of components for APPOGGIO TIPO UL 75_160-40 D with material specifications.

CAMPATA A TRAVI INCORPORATE 22m



Contract documents including COMMITTEE, GENERAL CONTRACTOR (ITICAV2), project title (INFRASTRUTTURE FERROVIARIE...), and technical details.