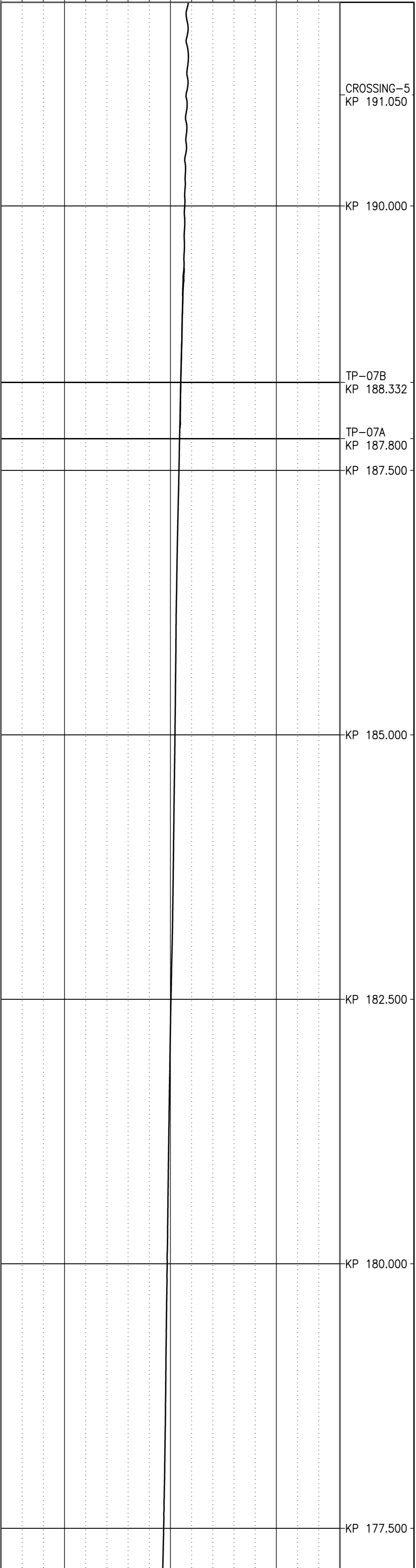


LONGITUDINAL PROFILE ALONG ROUTE CENTER LINE



PIPELINE DESIGN SUMMARY

OUTSIDE DIAMETER (INCH)	32
WALL THICKNESS (mm)	20.6
MATERIAL GRADE	X-70
ANTI-CORROSION COATING	4.5mm 3-LAYER POLYPROPYLENE
CONCRETE COATING (mm)	80
CONCRETE COATING (mm)	40

PLAN VIEW & BATHYMETRY

NOTES

- BATHYMETRY FROM IGI RECONNAISSANCE MARINE SURVEY 2007.
- GEOGRAPHIC COASTLINE DATA OBTAINED FROM NATIONAL GEOGRAPHIC DATA CENTER'S COASTLINE EXTRACTOR. WORLD VECTOR SHORELINE DATA (DESIGNED FOR 1:250,000)
- CABLE ALIGNMENTS FROM:
 - ITALIAN HYDROGRAPHIC CHART No. 920
 - ITALY-GREECE SUBMARINE HYDROCONNECTOR - GENERAL OVERVIEW & KEY MAP
 - SUBMARINE FIBRE-OPTIC LINK (ITALY) - FTELIN (GREENEED) MARINE SURVEY.
- PIPELINE DESIGN SUMMARY FROM DESIGN REVIEW & CAPEX ESTIMATE REPORT 31040901-001-TRP-005_REV.0
- KP % ARE RELATIVE TO POSSIBLE LANDFALL POINT 0M2 (KP 0.000)

ROUTE DEFINITION

POINT	NORTHING	EASTING	LATITUDE	LONGITUDE	RADIUS
OM2	4,352,679.55m	439,205.70m	39° 19' 17" N	20° 17' 41" E	N/A
IP-01	4,350,796.22m	428,998.03m	39° 18' 13" N	20° 10' 35" E	3,500m
IP-02	4,351,089.98m	413,227.32m	39° 18' 17" N	19° 59' 37" E	5,000m
IP-03	4,343,811.23m	398,109.65m	39° 14' 15" N	19° 49' 10" E	10,000m
IP-04	4,380,174.81m	348,192.09m	39° 33' 28" N	19° 13' 59" E	10,000m
IP-05	4,403,220.00m	319,867.00m	39° 45' 36" N	18° 53' 50" E	10,000m
IP-06	4,418,307.00m	299,096.00m	39° 23' 28" N	18° 39' 01" E	5,000m
IP-07	4,440,408.18m	294,413.99m	40° 05' 20" N	18° 35' 19" E	3,500m
IP-08	4,447,101.04m	294,033.89m	40° 08' 56" N	18° 34' 55" E	2,000m
IP-09	4,449,559.35m	288,623.80m	40° 10' 11" N	18° 31' 04" E	2,000m
OLE-1	4,446,993.00m	287,153.00m	40° 08' 47" N	18° 30' 05" E	N/A

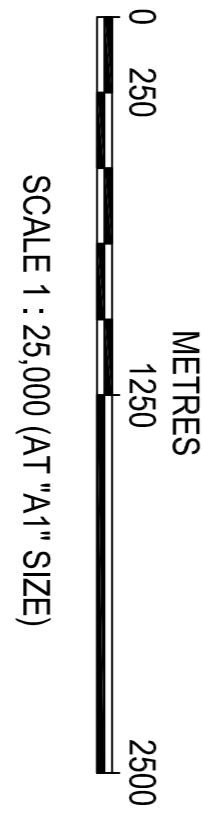
LEGEND

- PIPELINE ROUTE CENTER LINE
- MAJOR DEPTH CONTOUR (C.L. = 10m)
- MINOR DEPTH CONTOUR (C.L. = 2m)
- SUBMARINE CABLE
- APPROX. TERRITORIAL BOUNDARY (12 NAUTICAL MILES ZONE)

PROJECTION PARAMETERS

HOR. COORDINATE SYSTEM : WGS 84 / UTM ZONE 34
 PROJECTION : UNIVERSAL TRANSVERSE MERCATOR (UTM)
 Central Meridian (CM) : 21° 00' 00" East
 Latitude of Origin : 00° 00' 00" North
 False Easting : 500,000 m
 False Northing : 0 m
 Scale factor at CM : 0.9999600

SCALE



FOR CLIENT REVIEW & COMMENT		FKK	AL	MND
FOR INTERNAL REVIEW		FKK	AL	MND
Αριθμ. ΗΛΕΚΤΡΟΝΙΚΗΣ Έγκρισης	Τύπος ΠΔ	Εγκριση	Εγκριση	Εγκριση
Αριθμ. ΗΛΕΚΤΡΟΝΙΚΗΣ Έγκρισης	Τύπος ΠΔ	Εγκριση	Εγκριση	Εγκριση

IGI Poseidon

IGI INTERCONNECTOR GREECE - ITALY
 ITALIAN AUTHORITIES APPROVAL
 SUPPORT

ITITECSEA

ITALIAN ROUTE SECTION
 ALIGNMENT CHART
 2 OF 4

Client Representative	Επιβ. Ρυθμίσεων	Καθαρά	125.000	Σελίδα	2	από	4
Client Reference	Καθαρά	Αρ. Έγκρισης	31040905	Διαβίβ. Αρ.	0101-DRW-00-002	Κατάσταση	B