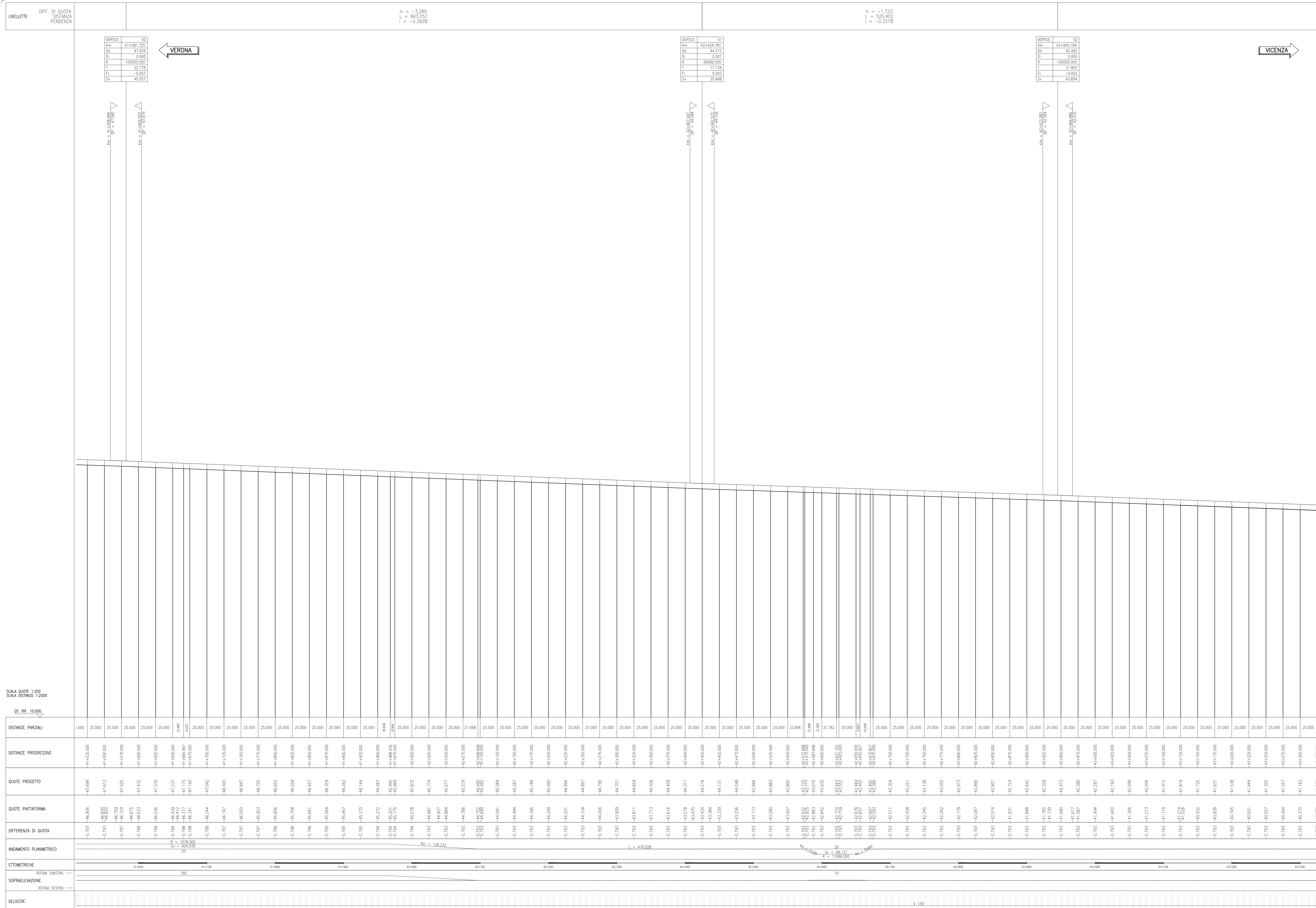


PROFILO DI TRACCIAMENTO
SCALA 1:2000/200



DESCRIZIONE	CODICE
ARMAMENTO-DOC GEN LC2-RELAZIONE TECNICA DI TRACCIAMENTO	INT112E22R05F0000002
ARMAMENTO-DOC GEN LC2-Relazione tecnica generale	INT112E22R05F0000003
ARMAMENTO-DOC GEN LC2-Costruzione Inerzia - Relazione Tecnica	INT112E22R05F0000004
ARMAMENTO-DOC GEN LC2-SISTEMA DI POSA DOPPIO BINARIO - TRONCO CANTIERE	INT112E22R05F0000001
ARMAMENTO-DOC GEN LC2-PIANO SCHEMATICO DELL'ARMAMENTO	INT112E22R05F0000002
ARMAMENTO-DOC GEN LC2-SCAMBIO 60U/120U/0,040 - PIANO DI POSA E TRACCIATO GEOMETRICO	INT112E22R05F0000001
ARMAMENTO-DOC GEN LC2-SCAMBIO 60U/40U/0,074 - PIANO DI POSA E TRACCIATO GEOMETRICO	INT112E22R05F0000002
ARMAMENTO-DOC GEN LC2-SCAMBIO 60U/170U/0,112 - PIANO DI POSA E TRACCIATO GEOMETRICO	INT112E22R05F0000003
ARMAMENTO-DOC GEN LC2-SPECIFICA DI FORNITURA - SISTEMA DI ATTACCO TIPO VOSSLICH	INT112E22R05F0000001
ARMAMENTO-DOC GEN LC2-TRAVESI R1	INT112E22R05F0000001
ARMAMENTO-DOC GEN LC2-SEZIONI TIPO	INT112E22R05F0000001
ARMAMENTO-DOC GEN LC2-SEZIONI TIPO VICOITI E GALERIE	INT112E22R05F0000002
ARMAMENTO-DOC GEN LC2-TABULATO VERTICALE CINEMATICO BINARIO DISPARI A/AC	INT112E22R05F0000001
ARMAMENTO-DOC GEN LC2-TABULATO ALTIMETRICO BINARIO DISPARI A/AC	INT112E22R05F0000002

LEGENDA

SCALA QUOTE 1:200
SCALA DISTANZE 1:2000

CT. RF. 10.000

DISTANZE PARZIALI	DISTANZE PROGRESSIVE	QUOTE PROGETTO	QUOTE PIATTAFORMA	DIFFERENZA DI QUOTA	ANDAMENTO PLANIMETRICO	ETIMETRICHE	SOPRAELEVAZIONE	VELOCITA'
1,000	41+525,000	-47,699	-46,905	-0,793	R = 1078,000	160		
25,000	41+550,000	-47,613	-46,820	-0,793	S = 84,939	170		
25,000	41+575,000	-47,525	-46,729	-0,797	R = 1078,000	180		
25,000	41+600,000	-47,432	-46,633	-0,799	S = 84,939	190		
25,000	41+625,000	-47,335	-46,536	-0,799	R = 1078,000	200		
25,000	41+650,000	-47,237	-46,439	-0,799	S = 84,939	210		
25,000	41+675,000	-47,135	-46,337	-0,798	R = 1078,000	220		
25,000	41+700,000	-47,029	-46,231	-0,798	S = 84,939	230		
25,000	41+725,000	-46,919	-46,124	-0,796	R = 1078,000	240		
25,000	41+750,000	-46,807	-46,014	-0,793	S = 84,939	250		
25,000	41+775,000	-46,694	-45,904	-0,790	R = 1078,000	260		
25,000	41+800,000	-46,580	-45,795	-0,785	S = 84,939	270		
25,000	41+825,000	-46,465	-45,686	-0,779	R = 1078,000	280		
25,000	41+850,000	-46,350	-45,578	-0,772	S = 84,939	290		
25,000	41+875,000	-46,235	-45,471	-0,764	R = 1078,000	300		
25,000	41+900,000	-46,120	-45,365	-0,754	S = 84,939	310		
25,000	41+925,000	-46,005	-45,260	-0,743	R = 1078,000	320		
25,000	41+950,000	-45,890	-45,156	-0,731	S = 84,939	330		
25,000	41+975,000	-45,775	-45,053	-0,718	R = 1078,000	340		
25,000	42+000,000	-45,660	-44,951	-0,704	S = 84,939	350		
25,000	42+025,000	-45,545	-44,850	-0,689	R = 1078,000	360		
25,000	42+050,000	-45,430	-44,750	-0,673	S = 84,939	370		
25,000	42+075,000	-45,315	-44,651	-0,656	R = 1078,000	380		
25,000	42+100,000	-45,200	-44,553	-0,637	S = 84,939	390		
25,000	42+125,000	-45,085	-44,456	-0,619	R = 1078,000	400		
25,000	42+150,000	-44,970	-44,361	-0,600	S = 84,939	410		
25,000	42+175,000	-44,855	-44,267	-0,580	R = 1078,000	420		
25,000	42+200,000	-44,740	-44,174	-0,559	S = 84,939	430		
25,000	42+225,000	-44,625	-44,082	-0,537	R = 1078,000	440		
25,000	42+250,000	-44,510	-44,000	-0,514	S = 84,939	450		
25,000	42+275,000	-44,395	-43,918	-0,490	R = 1078,000	460		
25,000	42+300,000	-44,280	-43,837	-0,465	S = 84,939	470		
25,000	42+325,000	-44,165	-43,757	-0,439	R = 1078,000	480		
25,000	42+350,000	-44,050	-43,678	-0,412	S = 84,939	490		
25,000	42+375,000	-43,935	-43,600	-0,384	R = 1078,000	500		
25,000	42+400,000	-43,820	-43,523	-0,355	S = 84,939	510		
25,000	42+425,000	-43,705	-43,447	-0,326	R = 1078,000	520		
25,000	42+450,000	-43,590	-43,372	-0,296	S = 84,939	530		
25,000	42+475,000	-43,475	-43,298	-0,265	R = 1078,000	540		
25,000	42+500,000	-43,360	-43,225	-0,233	S = 84,939	550		
25,000	42+525,000	-43,245	-43,153	-0,201	R = 1078,000	560		
25,000	42+550,000	-43,130	-43,082	-0,168	S = 84,939	570		
25,000	42+575,000	-43,015	-43,012	-0,135	R = 1078,000	580		
25,000	42+600,000	-42,900	-42,943	-0,102	S = 84,939	590		
25,000	42+625,000	-42,785	-42,875	-0,068	R = 1078,000	600		
25,000	42+650,000	-42,670	-42,808	-0,033	S = 84,939	610		
25,000	42+675,000	-42,555	-42,743	0,002	R = 1078,000	620		
25,000	42+700,000	-42,440	-42,679	0,031	S = 84,939	630		
25,000	42+725,000	-42,325	-42,616	0,060	R = 1078,000	640		
25,000	42+750,000	-42,210	-42,554	0,089	S = 84,939	650		
25,000	42+775,000	-42,095	-42,493	0,118	R = 1078,000	660		
25,000	42+800,000	-41,980	-42,433	0,147	S = 84,939	670		
25,000	42+825,000	-41,865	-42,374	0,176	R = 1078,000	680		
25,000	42+850,000	-41,750	-42,316	0,205	S = 84,939	690		
25,000	42+875,000	-41,635	-42,259	0,234	R = 1078,000	700		
25,000	42+900,000	-41,520	-42,203	0,263	S = 84,939	710		
25,000	42+925,000	-41,405	-42,148	0,292	R = 1078,000	720		
25,000	42+950,000	-41,290	-42,093	0,321	S = 84,939	730		
25,000	42+975,000	-41,175	-42,039	0,350	R = 1078,000	740		
25,000	43+000,000	-41,060	-41,985	0,379	S = 84,939	750		
25,000	43+025,000	-40,945	-41,932	0,408	R = 1078,000	760		
25,000	43+050,000	-40,830	-41,880	0,437	S = 84,939	770		
25,000	43+075,000	-40,715	-41,828	0,466	R = 1078,000	780		
25,000	43+100,000	-40,600	-41,777	0,495	S = 84,939	790		
25,000	43+125,000	-40,485	-41,727	0,524	R = 1078,000	800		
25,000	43+150,000	-40,370	-41,677	0,553	S = 84,939	810		
25,000	43+175,000	-40,255	-41,628	0,582	R = 1078,000	820		
25,000	43+200,000	-40,140	-41,579	0,611	S = 84,939	830		
25,000	43+225,000	-40,025	-41,531	0,640	R = 1078,000	840		
25,000	43+250,000	-39,910	-41,484	0,669	S = 84,939	850		
25,000	43+275,000	-39,795	-41,438	0,698	R = 1078,000	860		
25,000	43+300,000	-39,680	-41,392	0,727	S = 84,939	870		
25,000	43+325,000	-39,565	-41,347	0,756	R = 1078,000	880		
25,000	43+350,000	-39,450	-41,302	0,785	S = 84,939	890		
25,000	43+375,000	-39,335	-41,258	0,814	R = 1078,000	900		
25,000	43+400,000	-39,220	-41,214	0,843	S = 84,939	910		
25,000	43+425,000	-39,105	-41,171	0,872	R = 1078,000	920		
25,000	43+450,000	-38,990	-41,128	0,901	S = 84,939	930		
25,000	43+475,000	-38,875	-41,086	0,930	R = 1078,000	940		
25,000	43+500,000	-38,760	-41,044	0,959	S = 84,939	950		
25,000	43+525,000	-38,645	-41,003	0,988	R = 1078,000	960		
25,000	43+550,000	-38,530	-40,962	1,017	S			