

SEZIONI TRASVERSALI TAV. 1/2
Scala 1:200

DESEGNI DI RIFERIMENTO

STEREO E BONIFICHE table listing soil and construction details for cross-sections.

Scale and orientation symbols for the first cross-section.

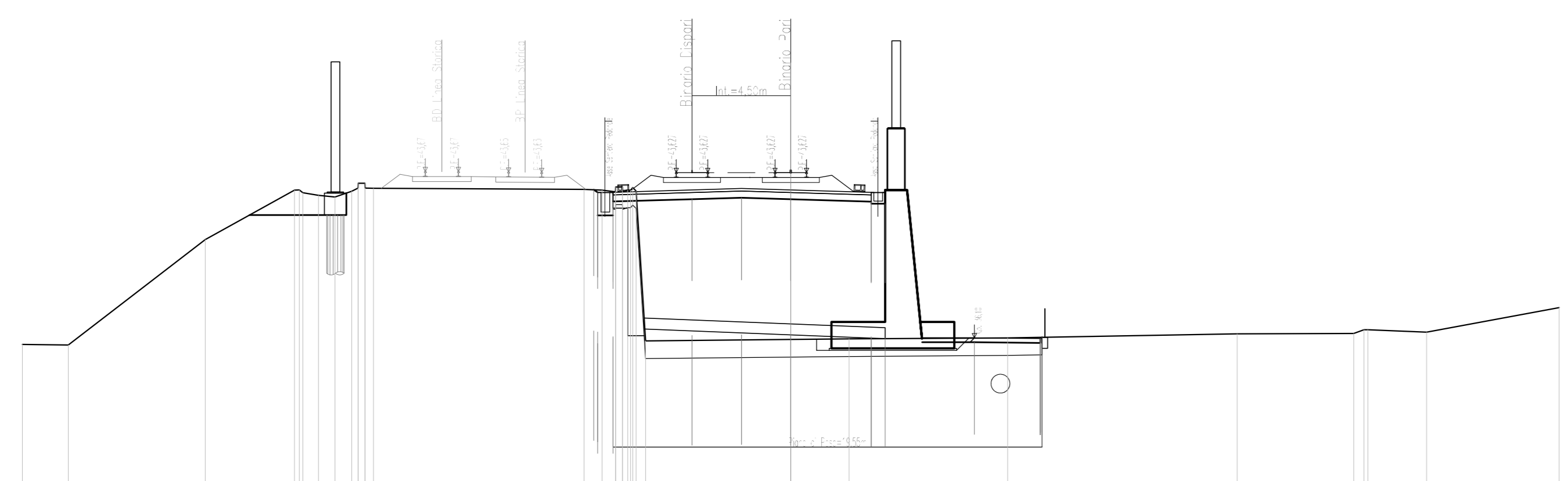


Table with 4 columns: QUOTE TERRENO, DISTANZE TERRENO, QUOTE RILEVATO, and DIST. RILEVATO for the first cross-section.

STEREO E BONIFICHE table for the second cross-section.

Scale and orientation symbols for the second cross-section.

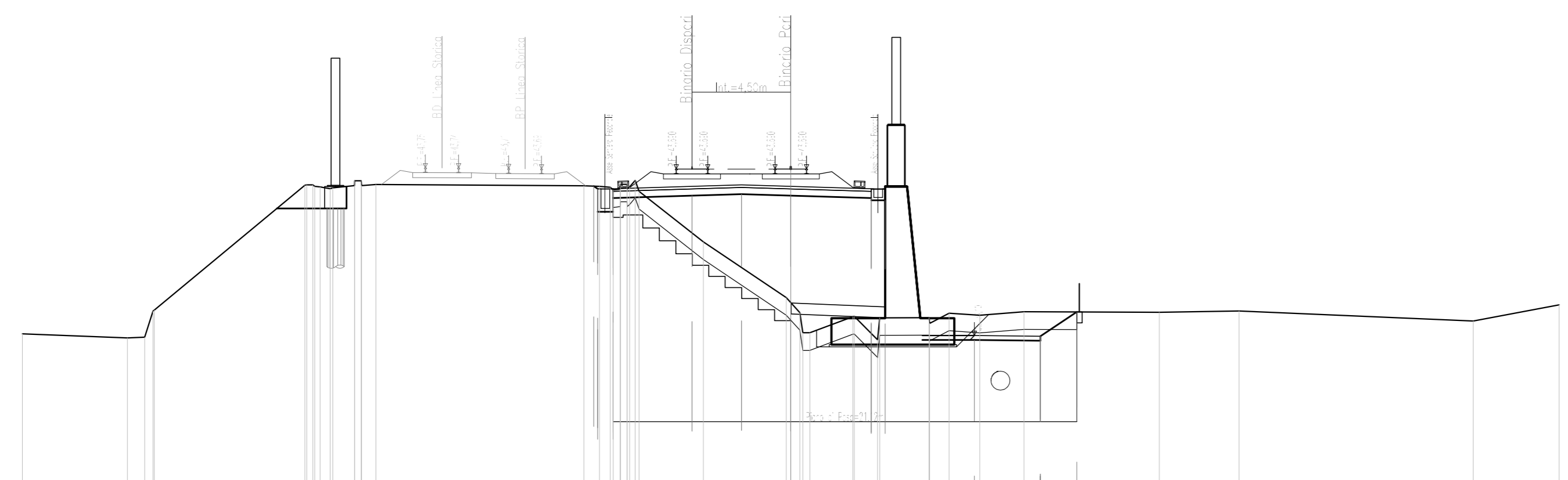


Table with 4 columns: QUOTE TERRENO, DISTANZE TERRENO, QUOTE RILEVATO, and DIST. RILEVATO for the second cross-section.

STEREO E BONIFICHE table for the third cross-section.

Scale and orientation symbols for the third cross-section.

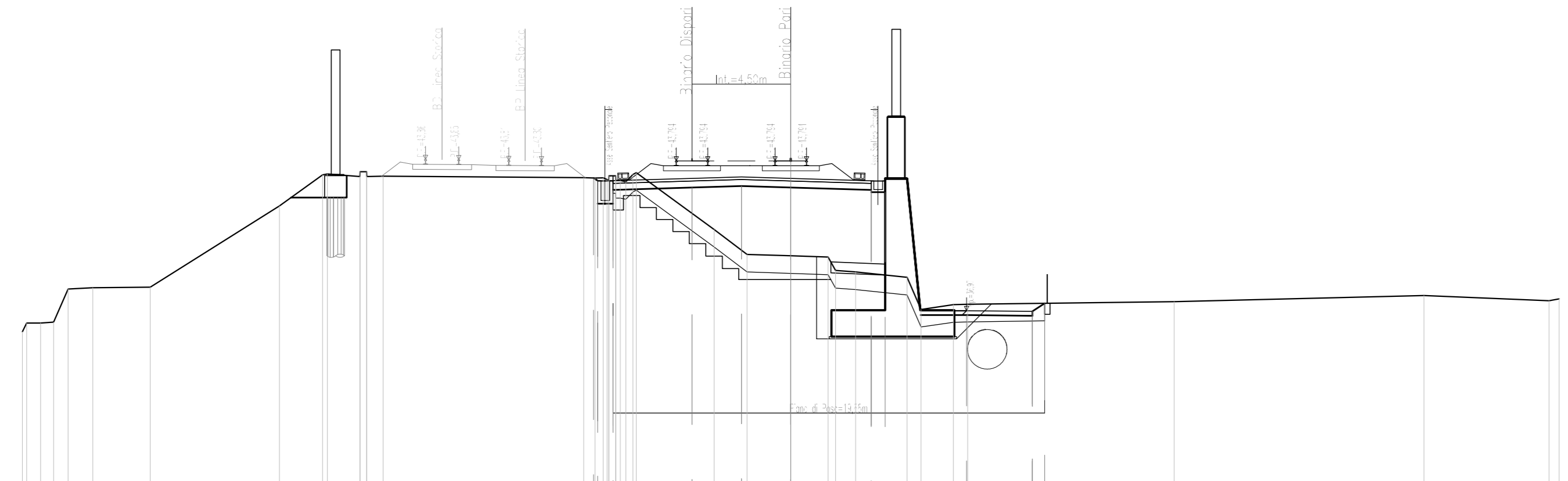


Table with 4 columns: QUOTE TERRENO, DISTANZE TERRENO, QUOTE RILEVATO, and DIST. RILEVATO for the third cross-section.

STEREO E BONIFICHE table for the fourth cross-section.

Scale and orientation symbols for the fourth cross-section.

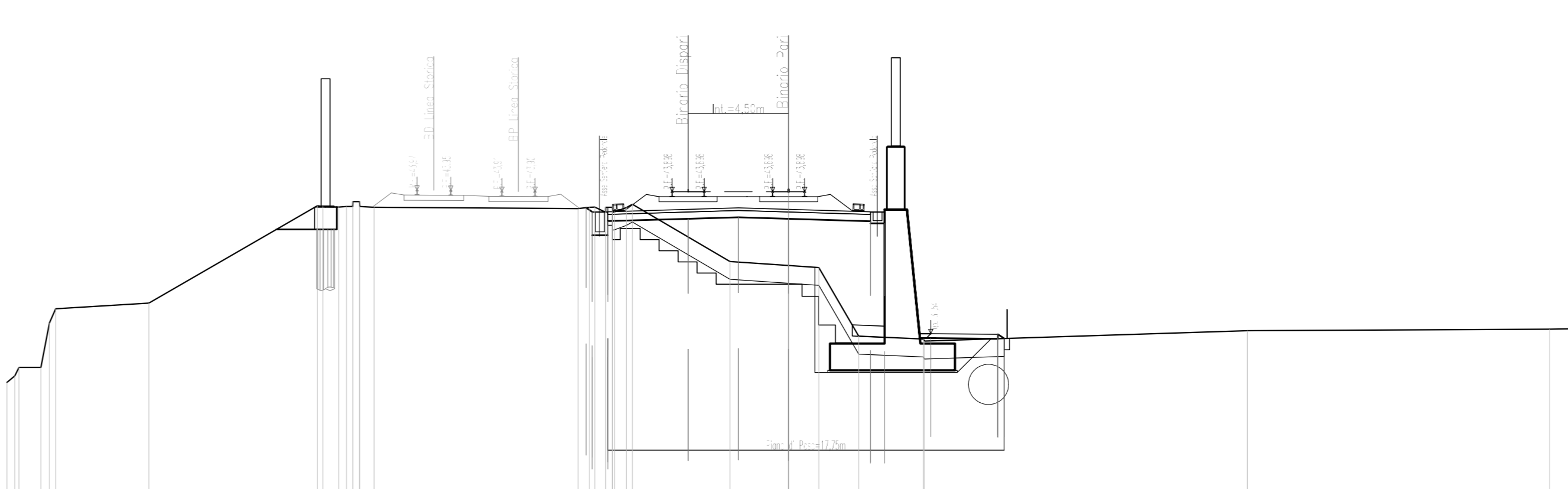


Table with 4 columns: QUOTE TERRENO, DISTANZE TERRENO, QUOTE RILEVATO, and DIST. RILEVATO for the fourth cross-section.

STEREO E BONIFICHE table for the fifth cross-section.

Scale and orientation symbols for the fifth cross-section.

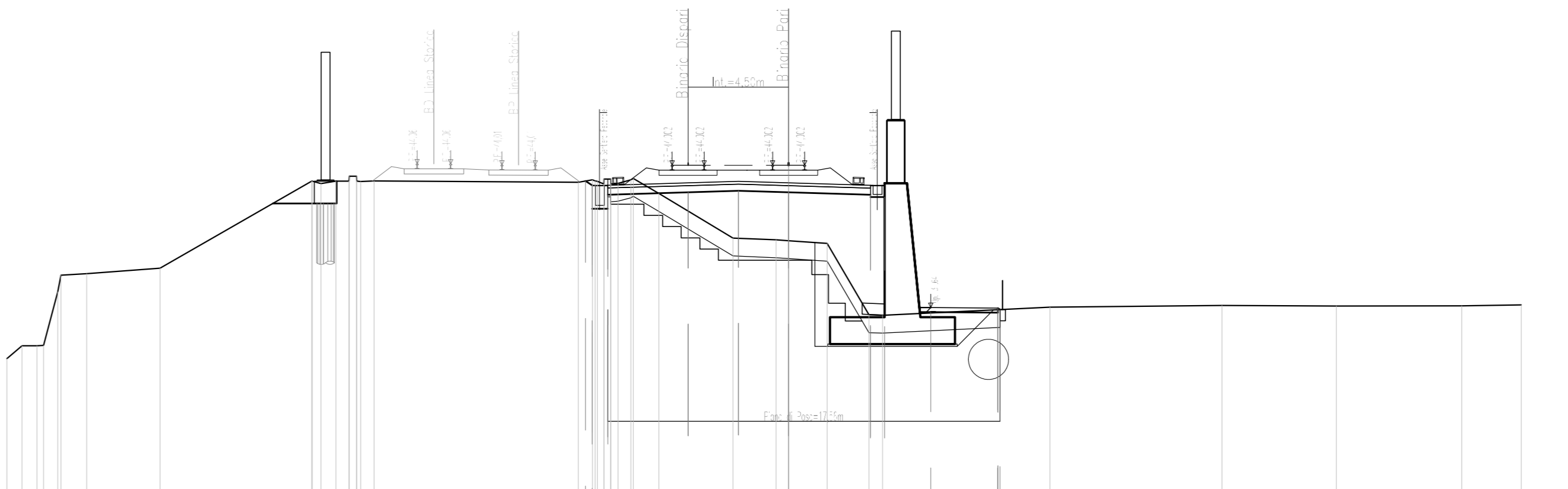


Table with 4 columns: QUOTE TERRENO, DISTANZE TERRENO, QUOTE RILEVATO, and DIST. RILEVATO for the fifth cross-section.

STEREO E BONIFICHE table for the sixth cross-section.

Scale and orientation symbols for the sixth cross-section.

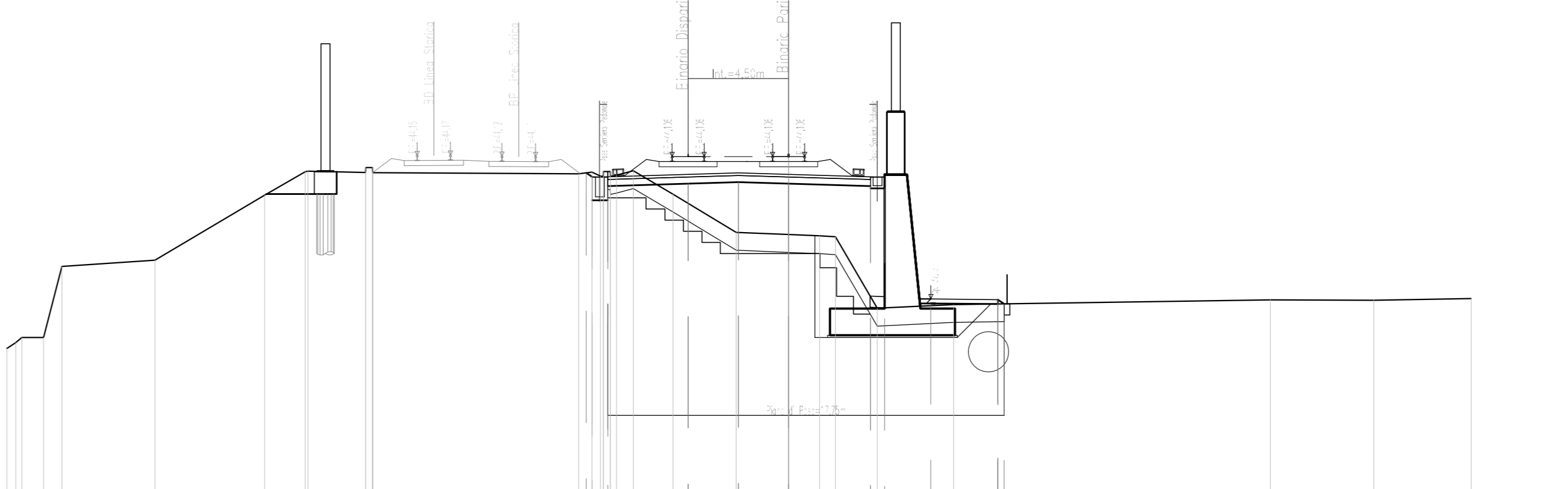


Table with 4 columns: QUOTE TERRENO, DISTANZE TERRENO, QUOTE RILEVATO, and DIST. RILEVATO for the sixth cross-section.

CODICE

List of codes corresponding to different engineering disciplines and sections.

NOTE GENERALI

General notes regarding the drawings, including reference to progressive numbers and project details.

CARATTERISTICHE DEI MATERIALI

Section for material characteristics, currently blank.

Project information block including logos for RFI and Italferr, project name 'INFRASTRUTTURE FERROVIARIE STRATEGICHE DEFINITE DALLA LEGGE OBIETTIVO N. 443/01', contractor 'ITICAV2', and various administrative tables.