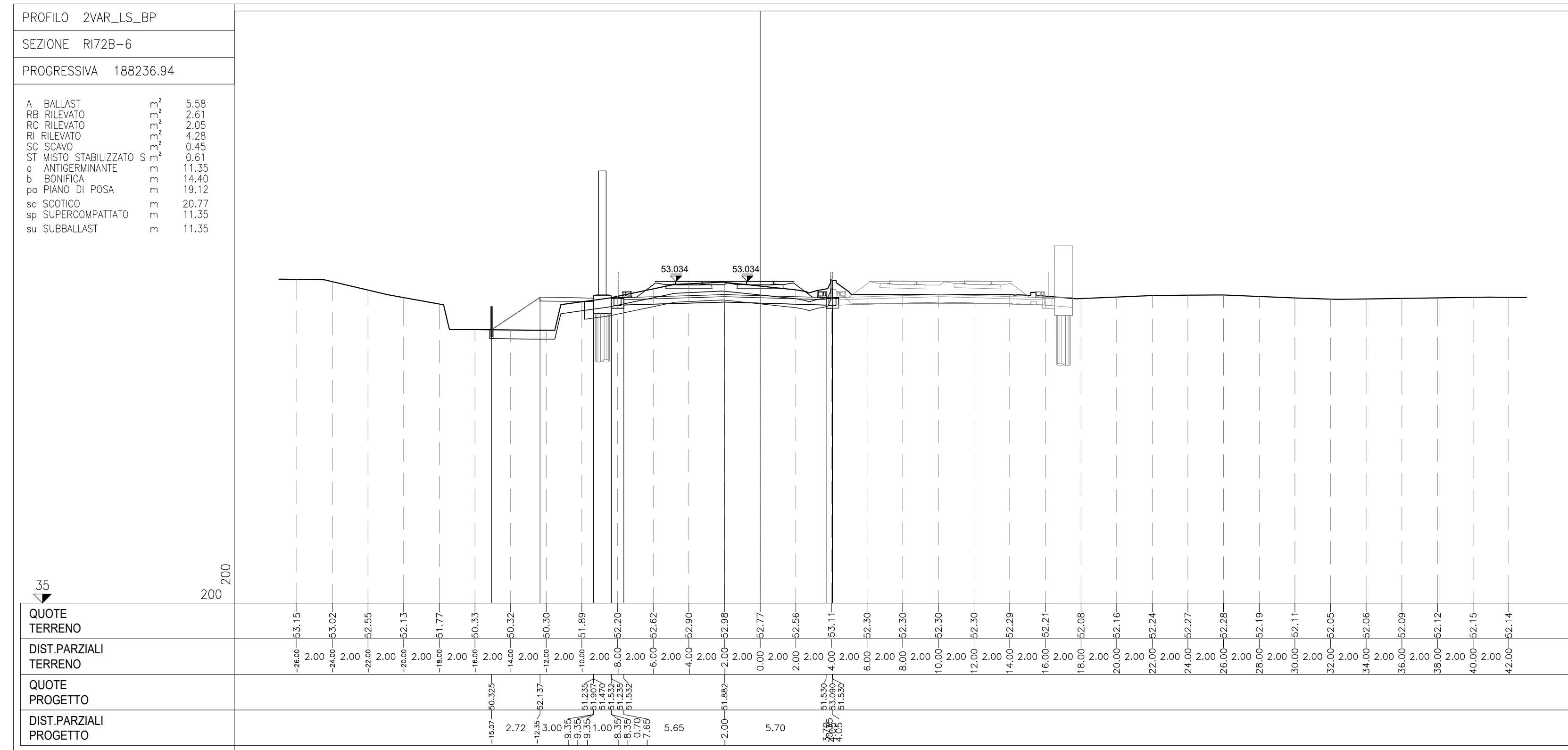
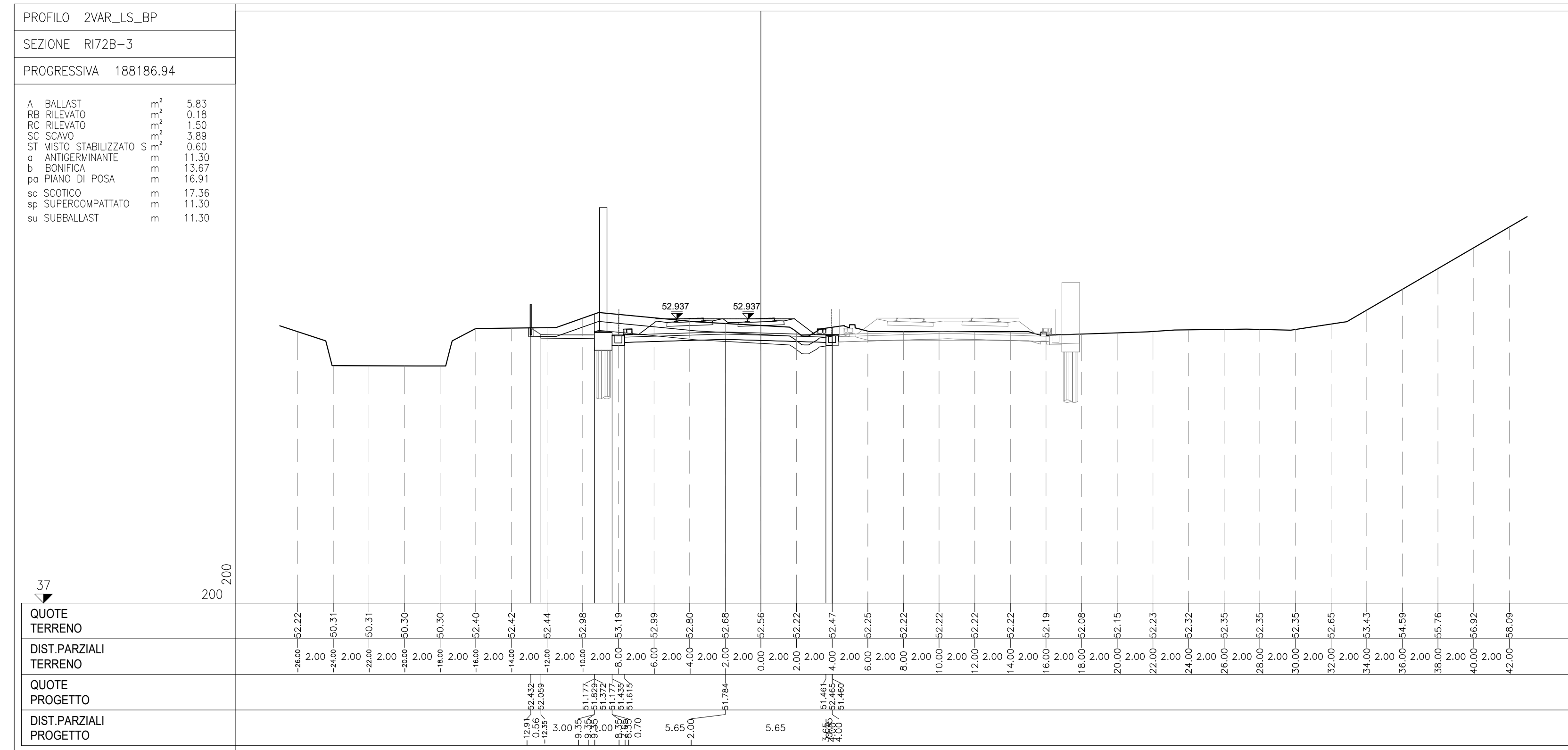
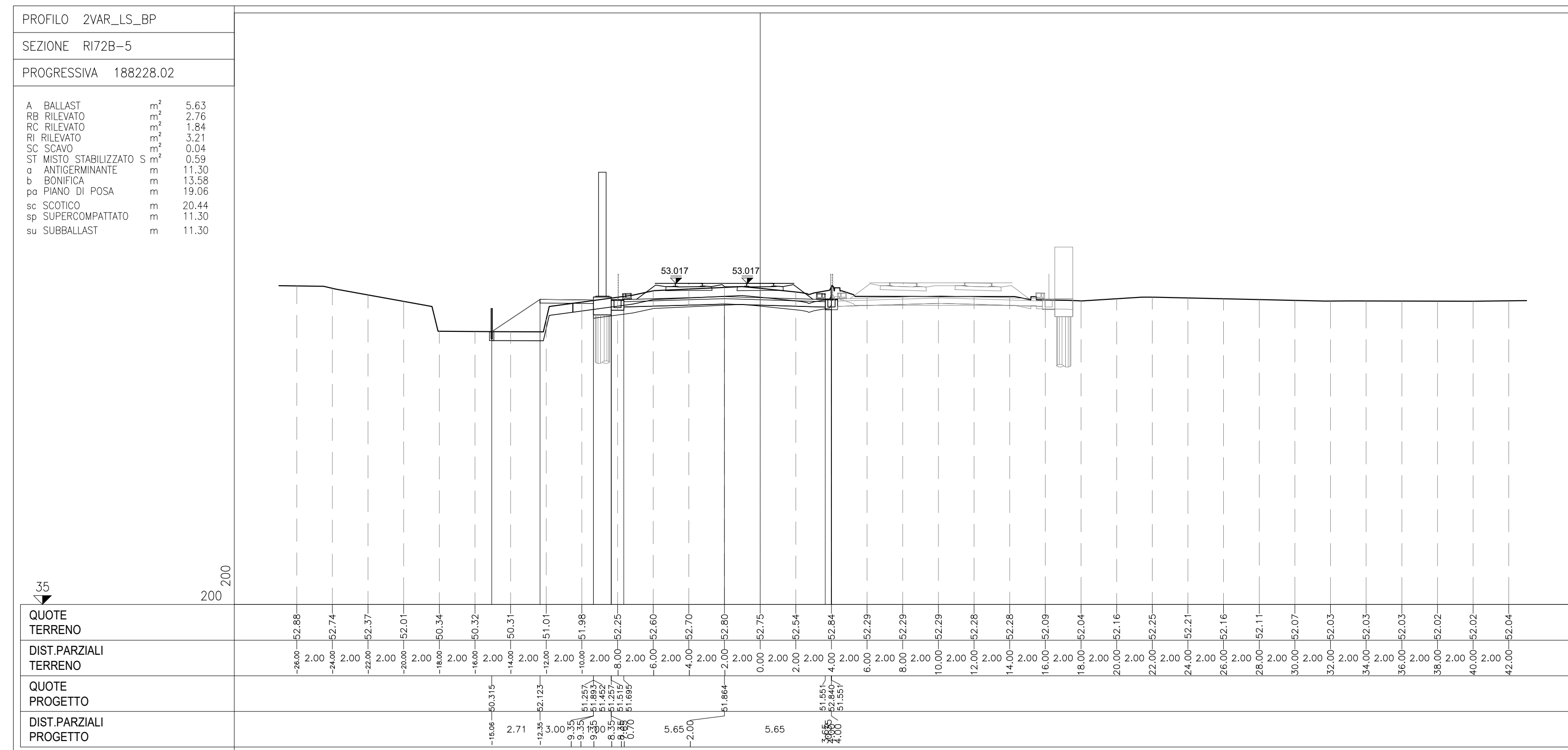
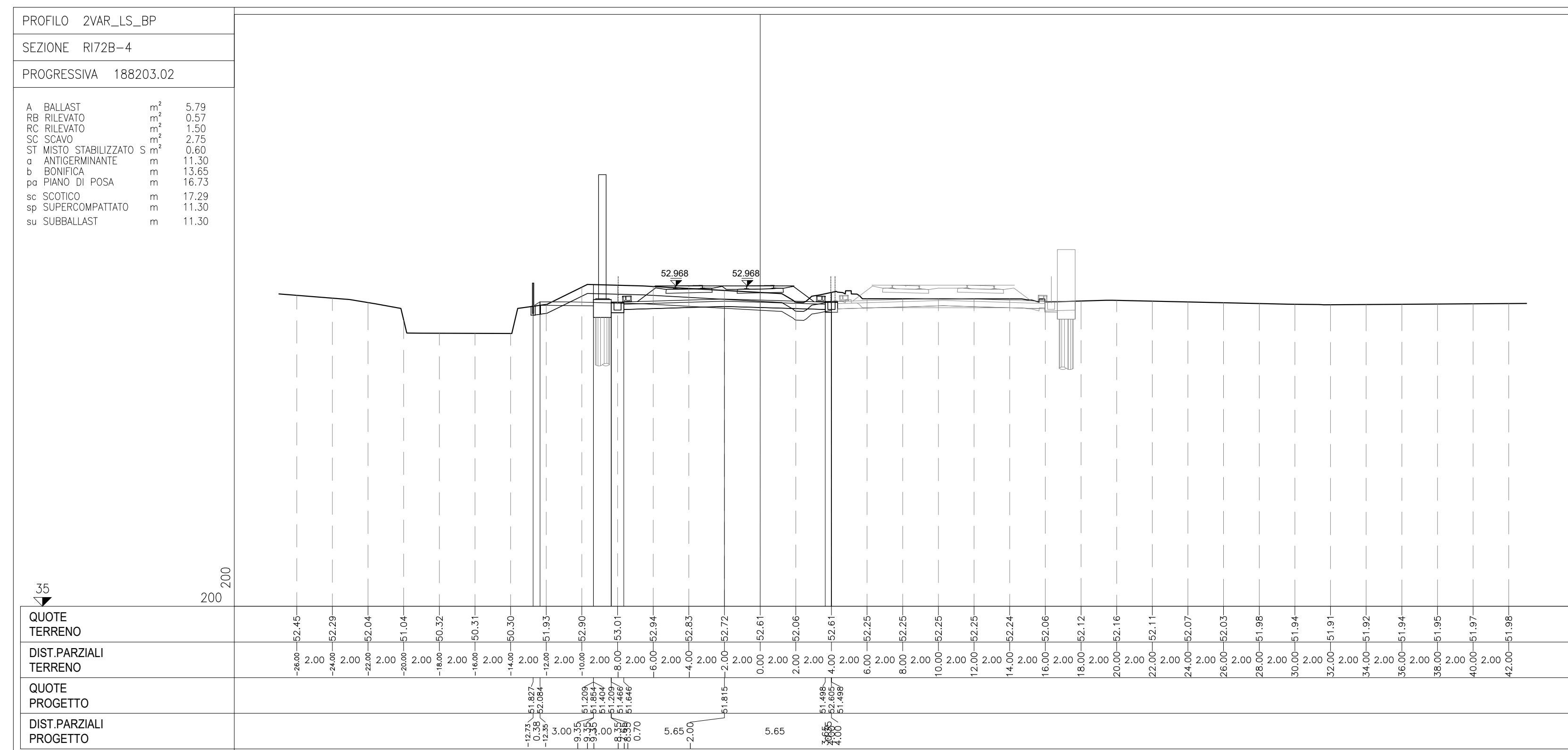


Table with 2 columns: DESCRIZIONE and CODICE. It lists various technical drawing codes and their descriptions, including 'RELAZIONE TECNICA GENERALE', 'PLANIMETRIA STATO DI FATTO', and 'SEZIONI TRASVERSALI'.



NOTE GENERALI

CARATTERISTICHE DEI MATERIALI

Technical drawing title block for 'INFRASTRUTTURE FERROVIARIE STRATEGICHE DEFINITE DALLA LEGGE OBIETTIVO N. 443/01'. It includes the project name 'LINEA A.V. /A.C. TORINO-VENEZIA Tratta VERONA-PADOVA', the general contractor 'Consorzio Iric-IV Due', and various administrative stamps and signatures. It also includes a table for project management with columns for 'COMMISSIONE', 'LOTO', 'FASE', 'ENTE', 'TIPO DOC.', 'OPERAZIONE', 'PROG.', and 'REV.'.