



**PROGETTO DI COSTRUZIONE  
ED ESERCIZIO DI UN IMPIANTO  
AGROVOLTAICO PER UNA  
POTENZA DI 15,72 MWP NEL  
COMUNE DI SAN SEVERO (FG)**



STATO DEL PROGETTO:  
Definitivo

TITOLO ELABORATO  
Inquadramenti PUG

PROPONENTE



INGEGNERIA



TIMBRO E FIRMA DEL PROGETTISTA

DATA  
08/01/2024

GRUPPO DI LAVORO

Ing. Antonio Ilardi  
Dr. Gianmarco Durante  
Arch. Chiara Ciardella  
Dr. agr. Lorenzo Fusco

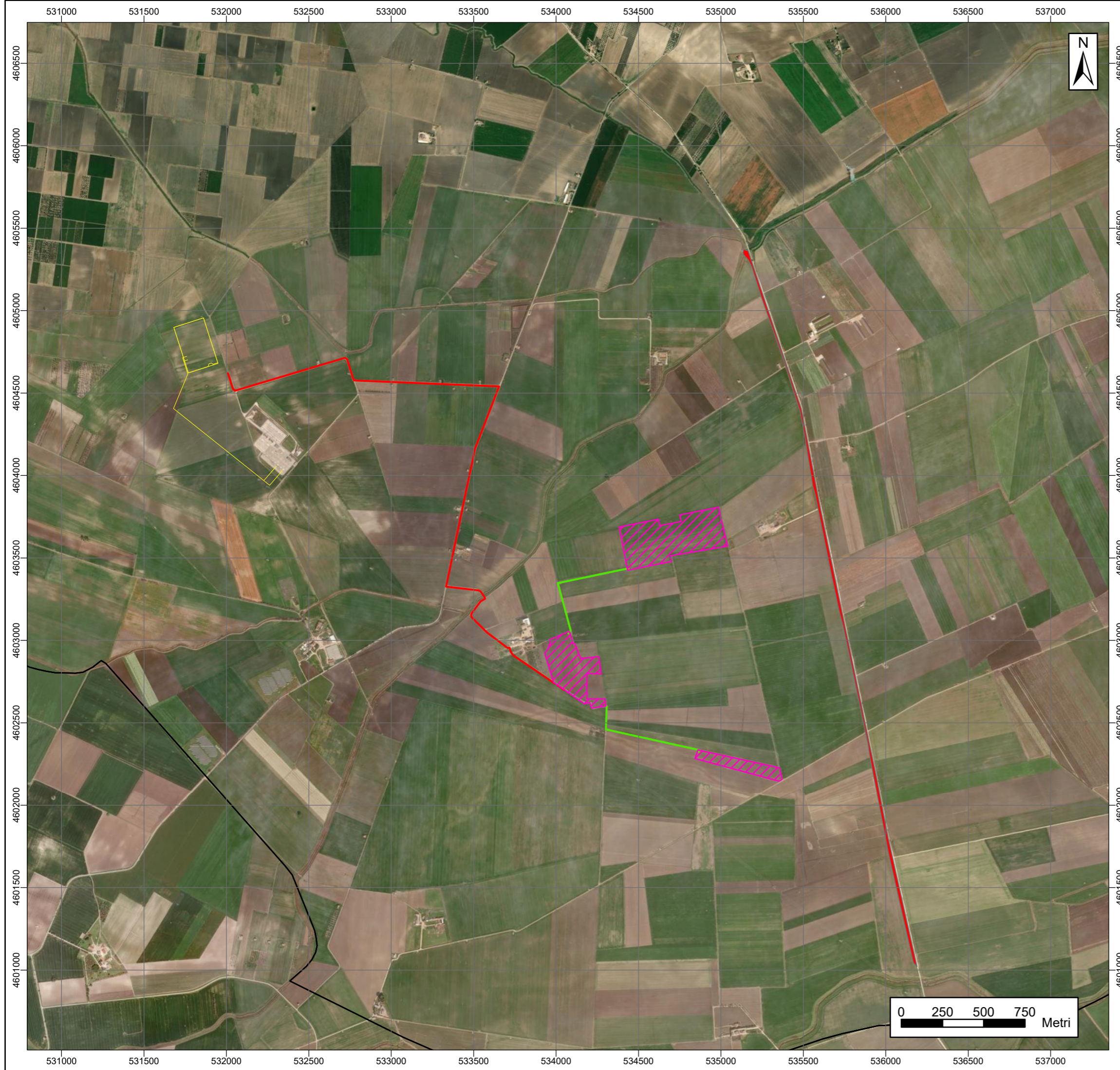
VERIFICATO

Ing. Antonio Ilardi

APPROVATO

Ing. Antonio Ilardi





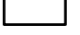









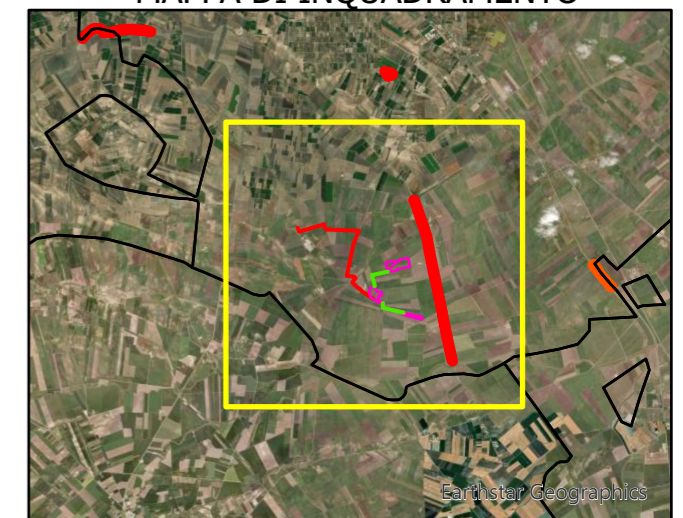
# MAPPA DI INQUADRAMENTO SU PUG

## COMPONENTI BOTANICO - VEGETAZIONALI

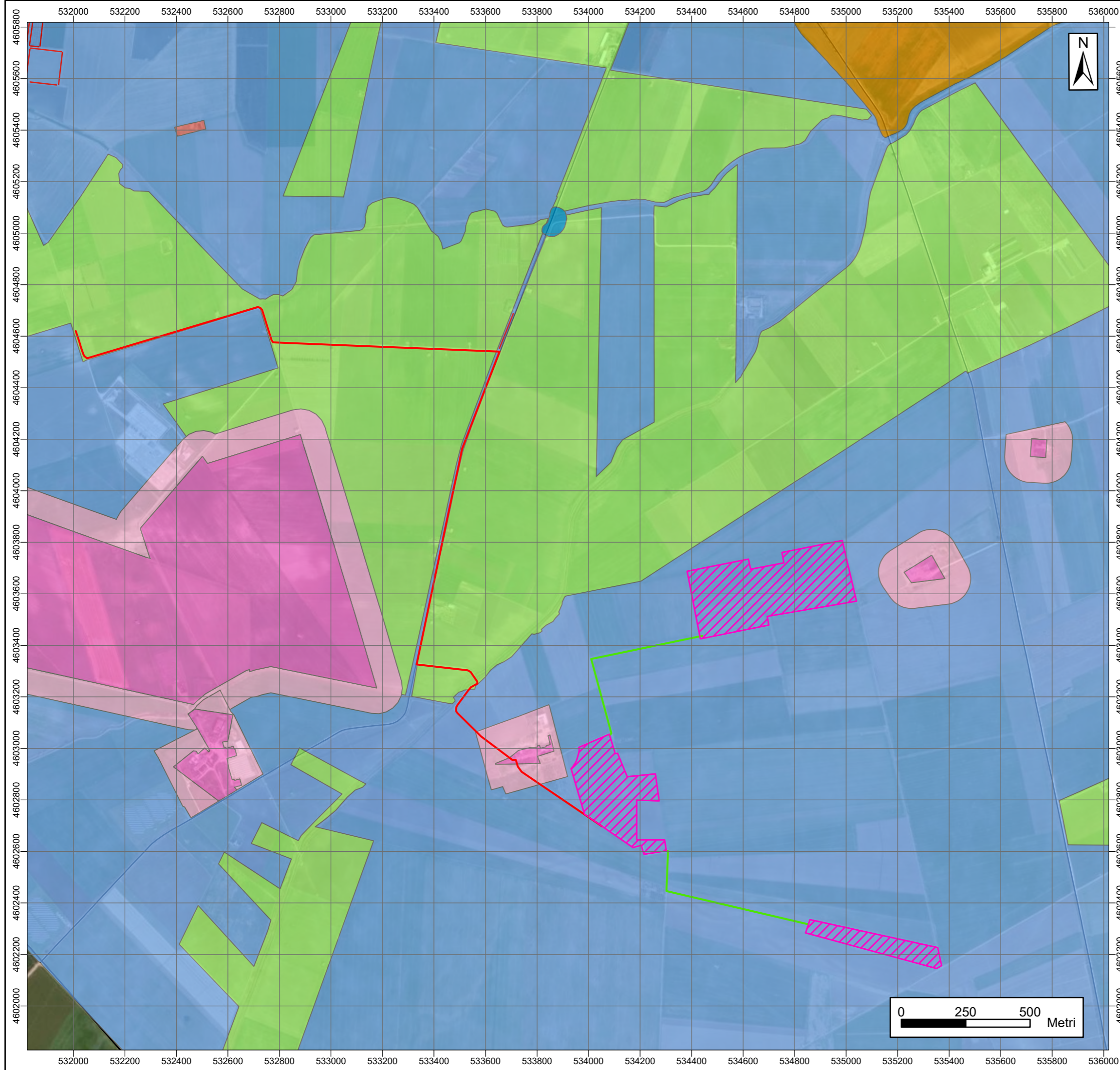
### Legenda

-  Area di Progetto
-  Ampliamento SE
-  Cavidotto MT
-  Cavidotto AT
-  Limiti Comunali
-  BP Boschi
-  UCP Rispetto boschi UCP
-  Aree umide
-  UCP Formazioni arbustive
-  UCP Pascoli naturali

### MAPPA DI INQUADRAMENTO



SISTEMA DI RIFERIMENTO GEOGRAFICO EPSG 32633



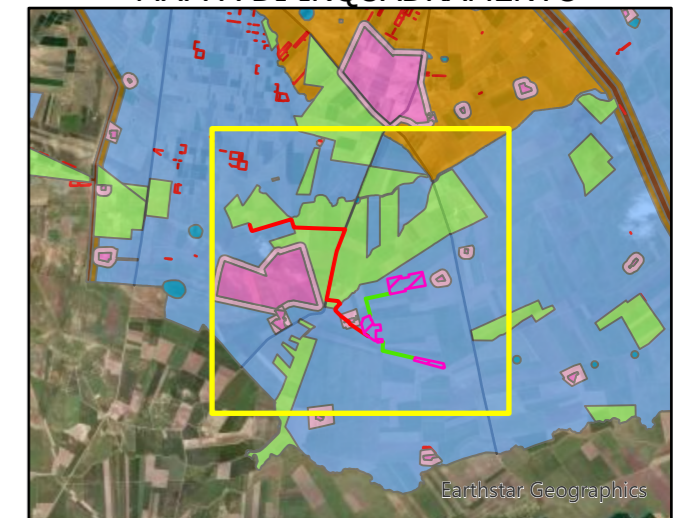
# MAPPA DI INQUADRAMENTO SU PUG

## COMPONENTI CULTURALI E INSEDIATIVE

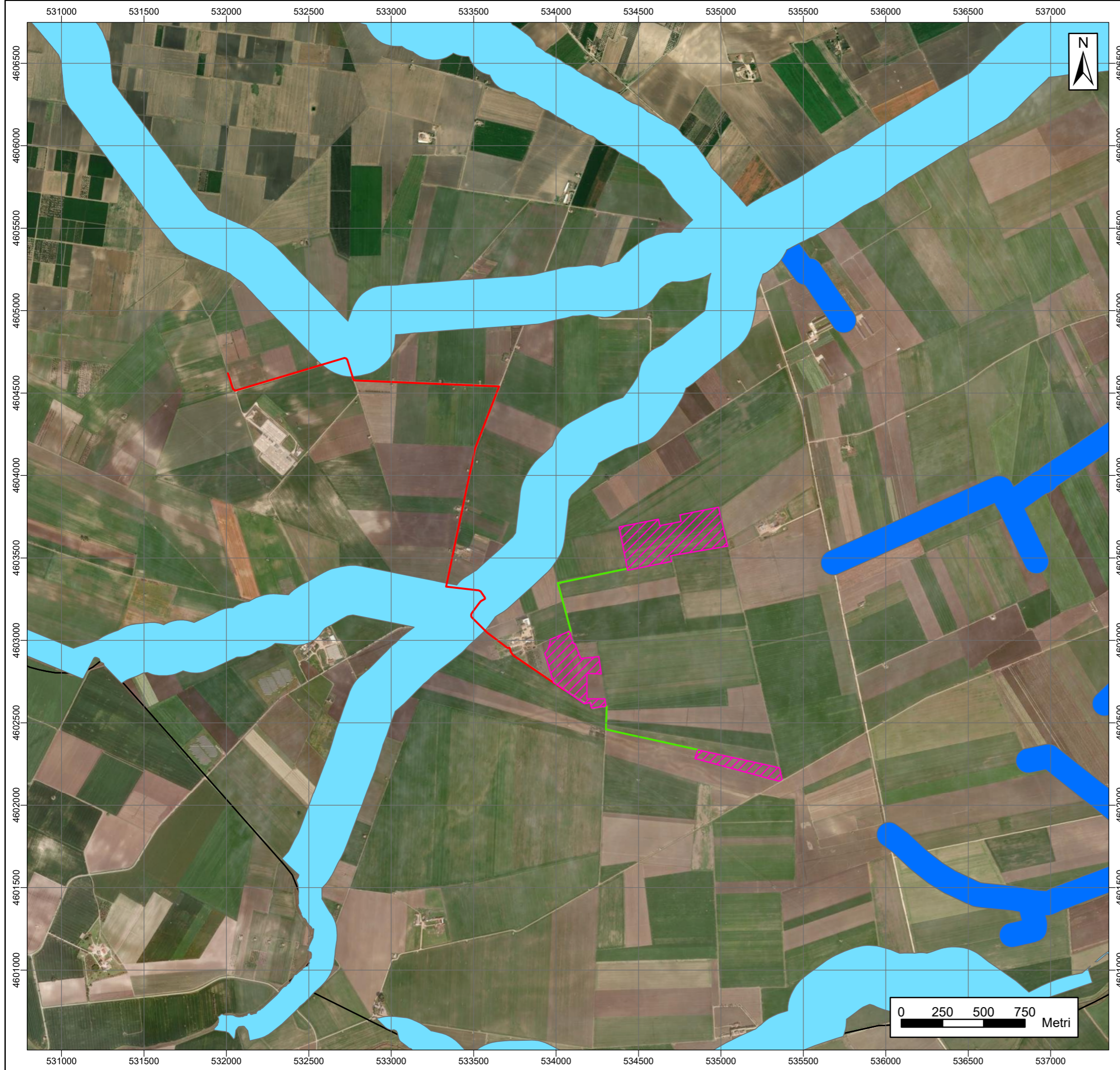
### Legenda

-  Area di Progetto
-  Cavidotto MT
-  Cavidotto AT
-  UCP area rispetto siti
-  UCP area rispetto tratturi
-  UCP città consolidata
-  UCP Aree a rischio archeologico
-  UCP stratificazione siti
-  UCP stratificazione trat
-  UCP Paesaggi rurali
-  Alberi in filari
-  Aree riforma
-  Beni diffusi
-  Contesto agricolo pregiato
-  Contesto del Radicosa
-  Contesto del Triolo
-  Tratturi
-  UCP strade valenza paesaggistica

### MAPPA DI INQUADRAMENTO









SISTEMA DI RIFERIMENTO GEOGRAFICO EPSG 32633



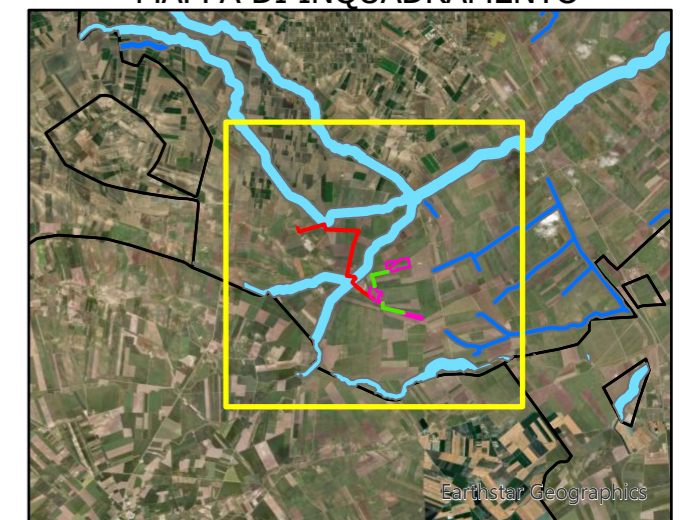
# MAPPA DI INQUADRAMENTO SU PUG

## COMPOTENTI IDROLOGICHE

### Legenda

-  Area di Progetto
-  Cavidotto MT
-  Cavidotto AT
-  Fiumi torrenti e corsi d'acqua
-  Reticolo Idrografico di connessione della R.E.R (75m)
-  Limiti Amministrativi Comunali

### MAPPA DI INQUADRAMENTO



SISTEMA DI RIFERIMENTO GEOGRAFICO EPSG 32633