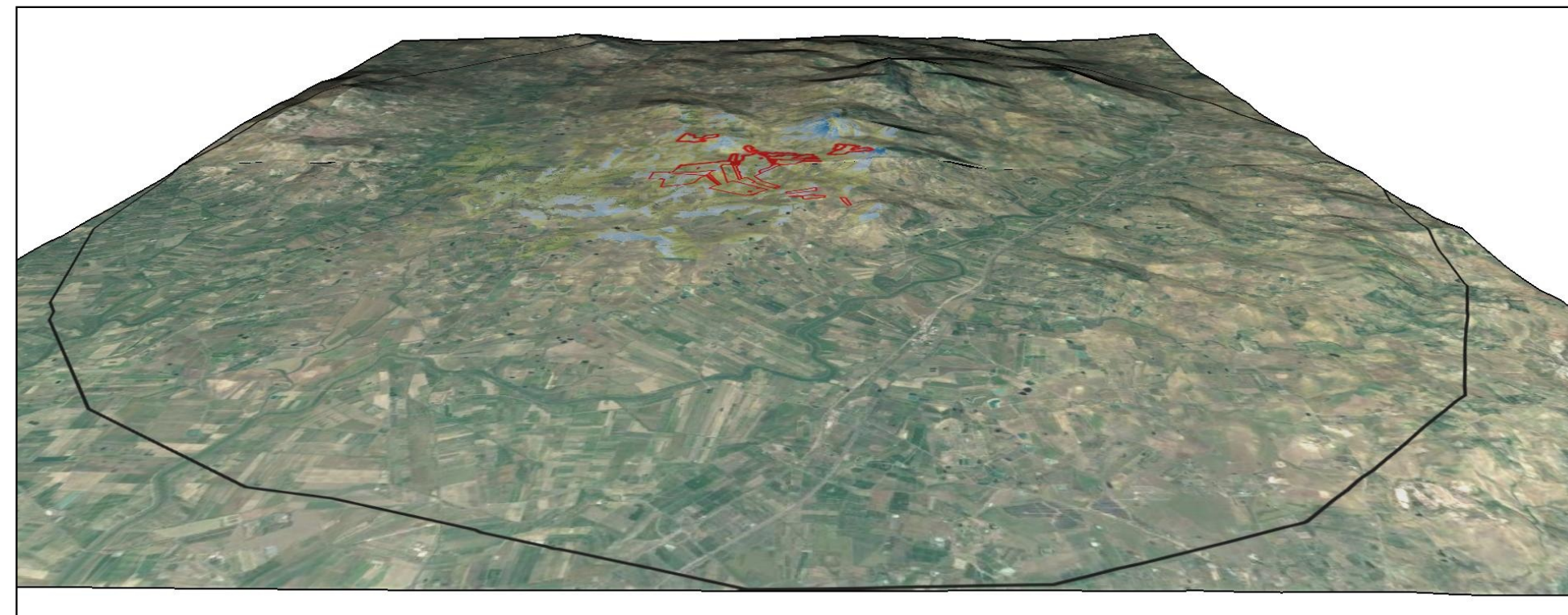
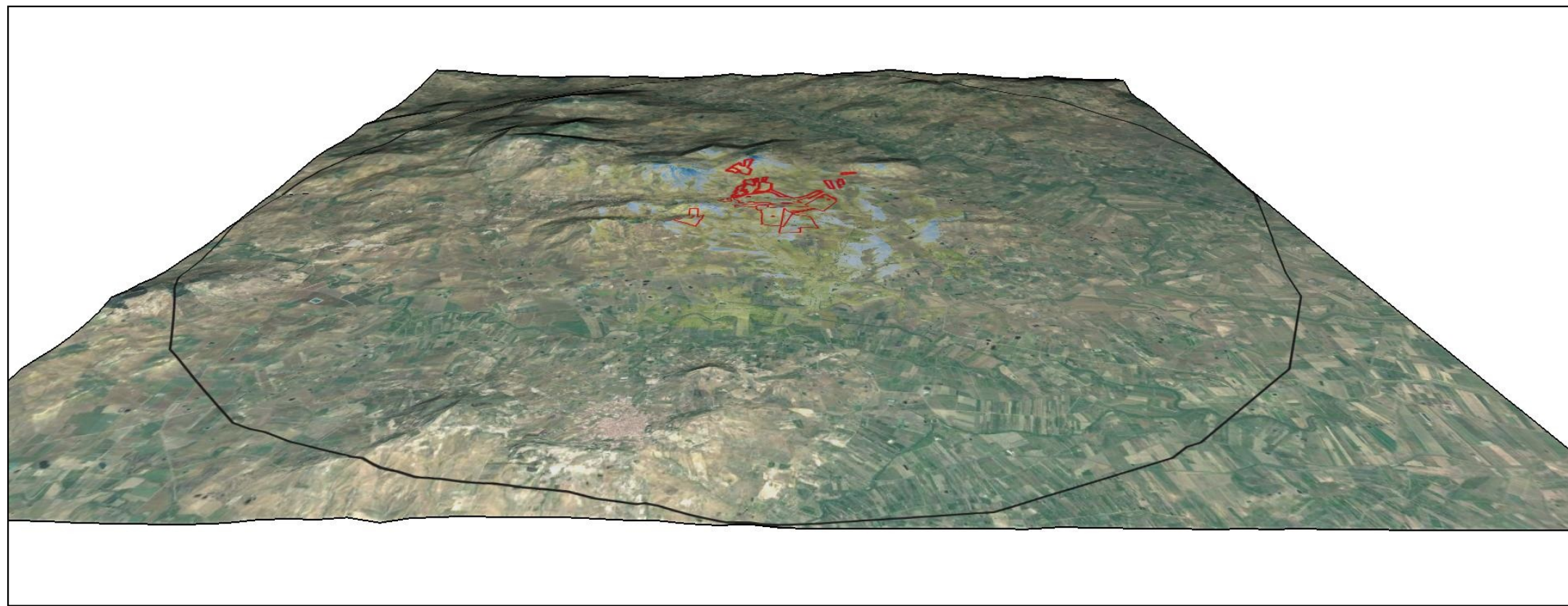


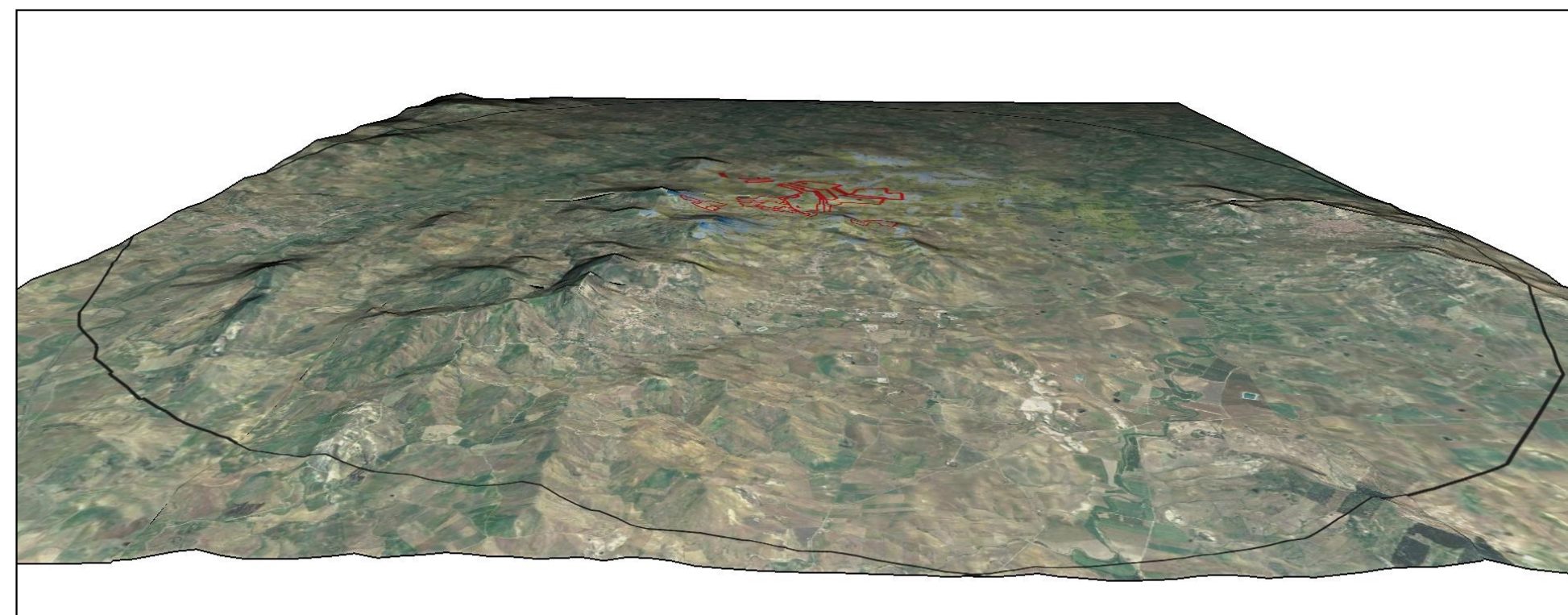
Vista da Nord






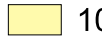




Vista da Est



Vista da Sud




Vista da Ovest

-  Aree impianto
-  Area buffer 10 km
- Aree di intervisibilità 10 km
-  Non visibile
-  10%
-  20%
-  40 %
-  60 %
-  80 %



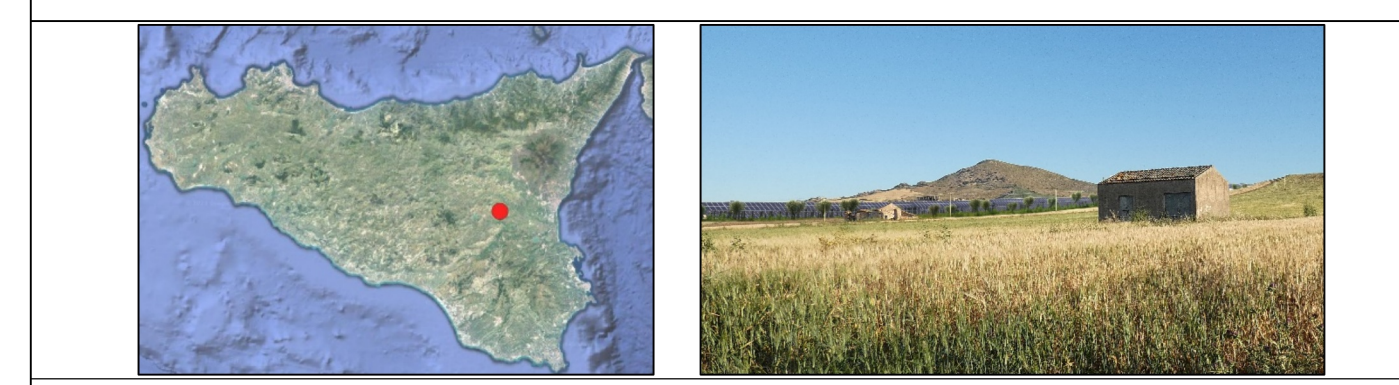
**PROGETTO PER LA REALIZZAZIONE DI UN IMPIANTO AGRIVOLTAICO
DELLA POTENZA DI PICCO DI 181,6 MWp E POTENZA DI IMMISSIONE 150 MW E
DELLE RELATIVE OPERE CONNESSE
NEI COMUNI DI CASTEL DI IUDICA E RAMACCA (CT)**

Proponente:
 **INNOVAZIONE AGRISOLARE SRL**
 CORSO GIACOMO MATTEOTTI, 1
 20121 MILANO (MI)
 CF/P.IVA 12275870967
 PEC: innovazioneagrisolare srl@pec.it

Progettazione:
 **Cesit Ingegneria S.r.l.**
 C.da Monte Cenere s.n
 Belpasso (CT) CAP 95032
 CF/P.IVA 03438580874
 info@cesit.it





**CARTA DELL'INTERVISIBILITÀ SU MODELLO
3D DEL TERRENO**

Dott. Ing. Salvatore Mele

DATA	FORMATO	SCALA	LIVELLO PROGETTAZIONE	REV.	VISTO	ELABORATO
Dicembre 2023						AVIURAM-VIA07-004

PROGETTAZIONE	Progettista Dott. Ing. Igor Giuffrida	Consulente Ambientale PhD Ing. Salvatore Cartarrasa