

| | | | |
|--|--|------------------------|--------------------|
|  | PROGETTISTA  <i>Tecnologia Ricerca Rischi</i> | COMMESSA | UNITA' - |
| | LOCALITA' REGIONE LIGURIA | DIS-MEC-B-15011 | |
| | PROGETTO / IMPIANTO FSRU Alto Tirreno e Collegamento alla Rete Nazionale Gasdotti | | Rev. 0 |

Rif. TRR: 72438

**EMERGENZA GAS
INCREMENTO DI CAPACITÀ DI RIGASSIFICAZIONE (DL 17.05.2022, n. 50)**

FSRU Alto Tirreno e Collegamento alla Rete Nazionale Gasdotti

**Rapporto Preliminare di Sicurezza
per la fase di Nulla Osta di Fattibilità (NOF)
ai sensi del D.Lgs. 105/15**

**Allegato C.8.1
Planimetrie Del Sistema Di Rivelazione Gas E Incendi**

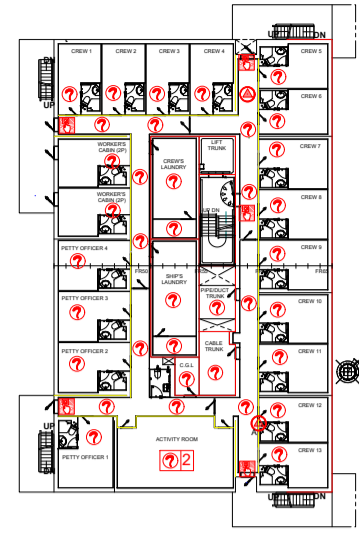
| | | | | | |
|-------------|--------------------|------------------|-------------------|------------------|-------------|
| | | | | | |
| | | | | | |
| | | | | | |
| 0 | Emissione per Enti | TRR | G.Romano | G. Lanza | Marzo 2024 |
| Rev. | Descrizione | Elaborato | Verificato | Approvato | Data |

FOR HN 2056 "GOLAR TUNDRA"

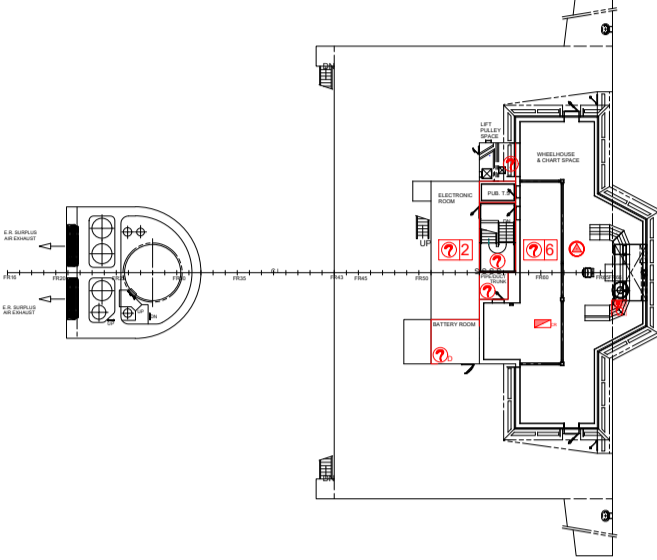
PRINCIPAL DIMENSIONS

| | |
|---------------------|----------------------------|
| LENGTH O.A. | 292.0 M. |
| LENGTH B.P. | 281.0 M. |
| BREADTH MOULDED | 49.0 M. |
| DEPTH MOULDED | 28.8 M. |
| DRAUGHT DESIGNED | 13.9 M. |
| DRAUGHT SQUARE LOAD | 13.9 M. |
| DRAUGHT SCANTLING | 13.9 M. |
| COMPLEMENT | 38 persons plus 10 workers |
| CALL SIGN | YV923 |
| IMO NO. | 9658808 |
| SHIP NAME | GOLAR TUNDRA |

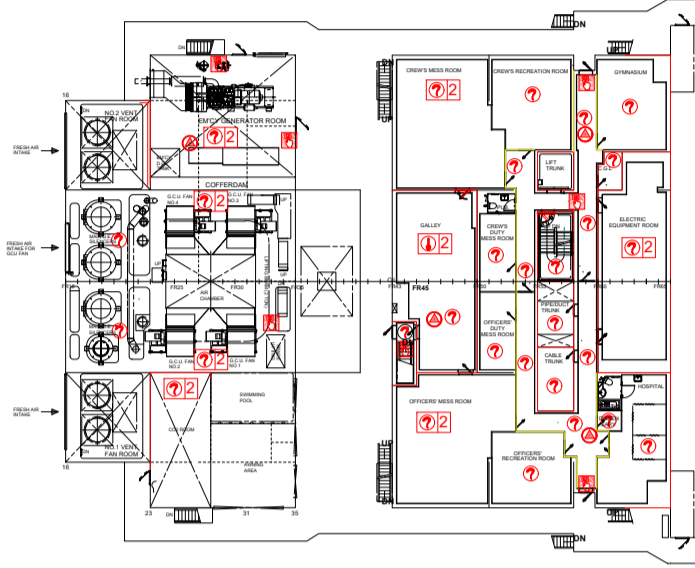
ACC. B-DECK



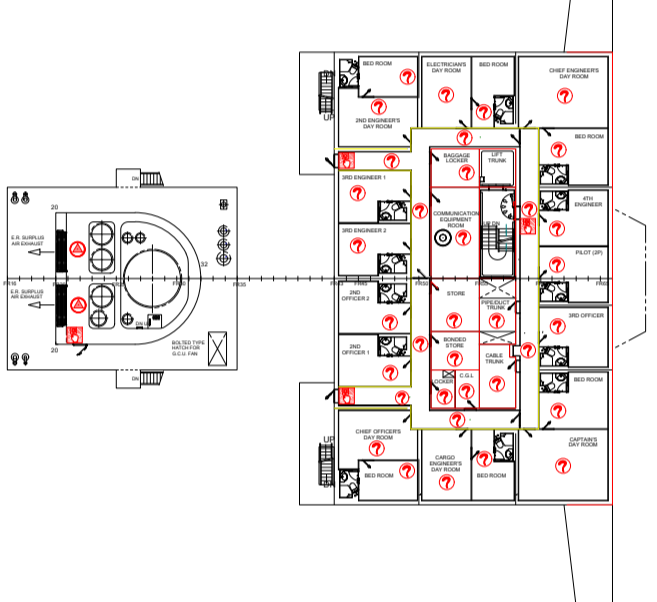
NAV. BRI-DECK



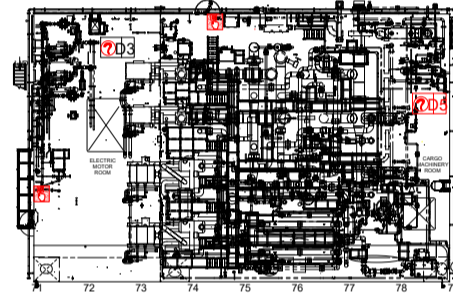
ACC. A-DECK



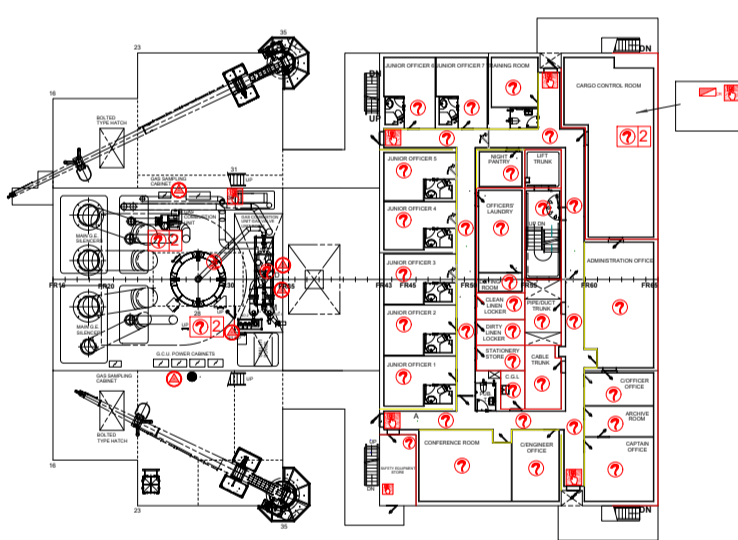
ACC. D-DECK



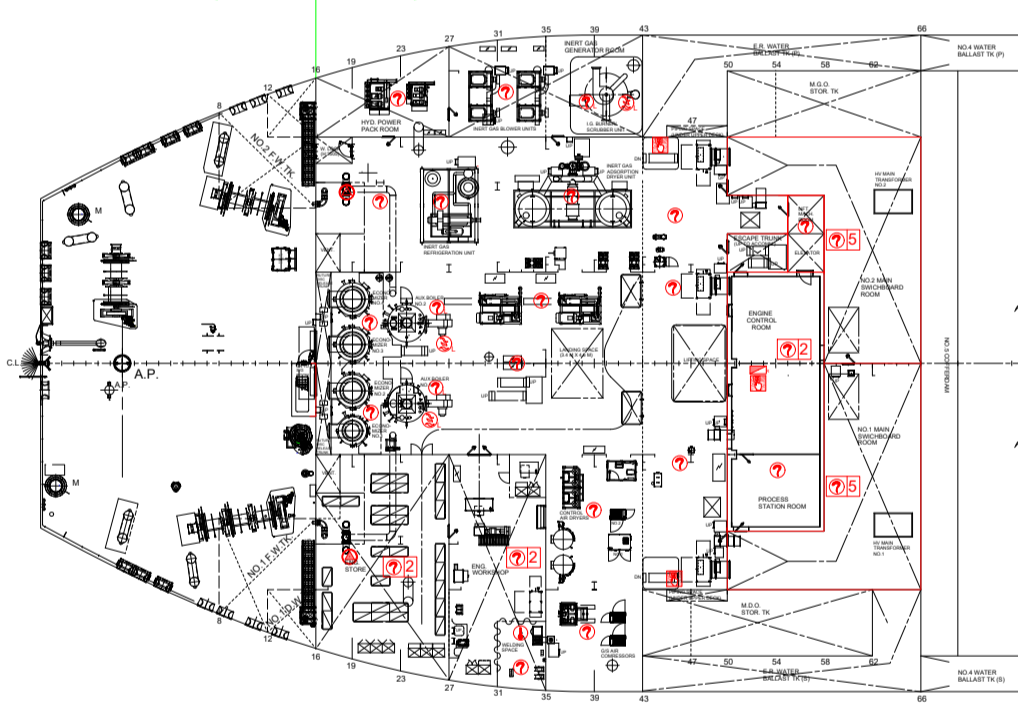
EL. MOTOR & CARGO MACH. RM PLAN



ACC. C-DECK

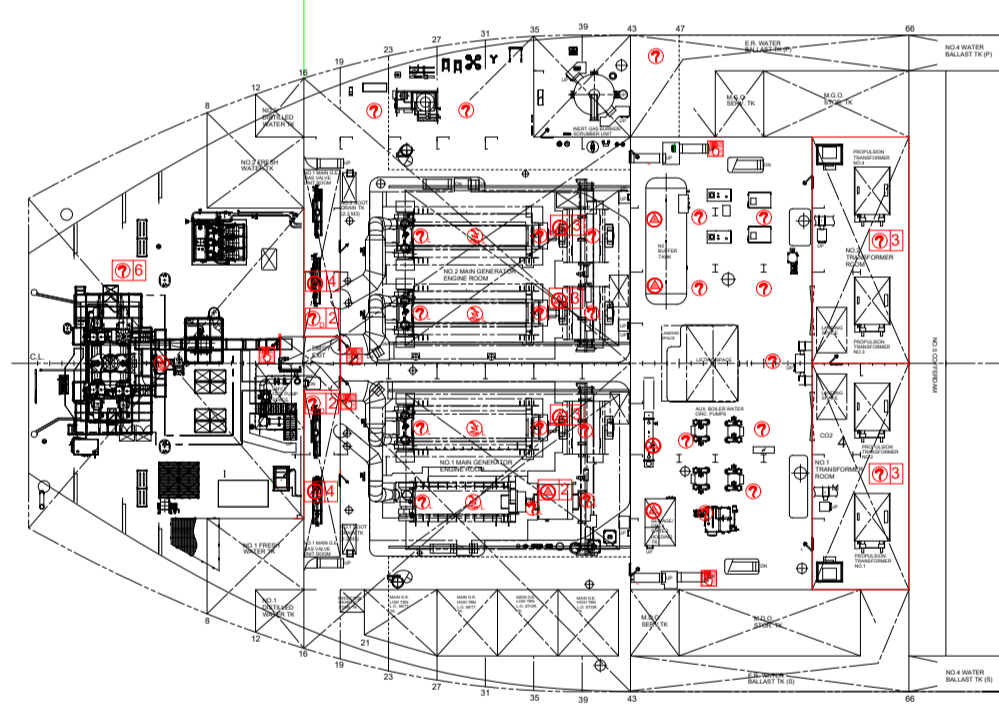


AFT. SUNKEN DECK



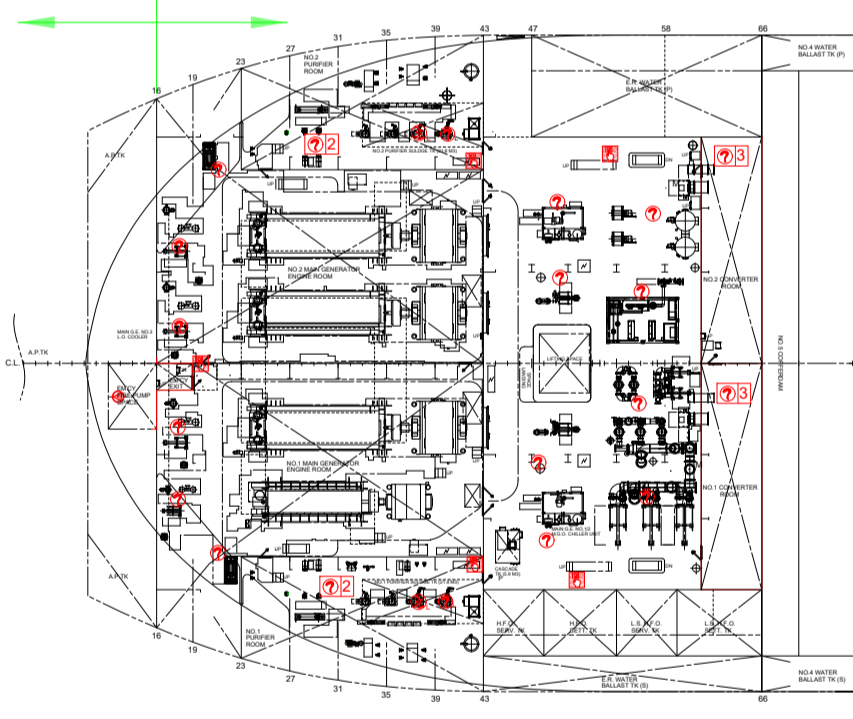
E/R 2ND DECK

S/G ROOM



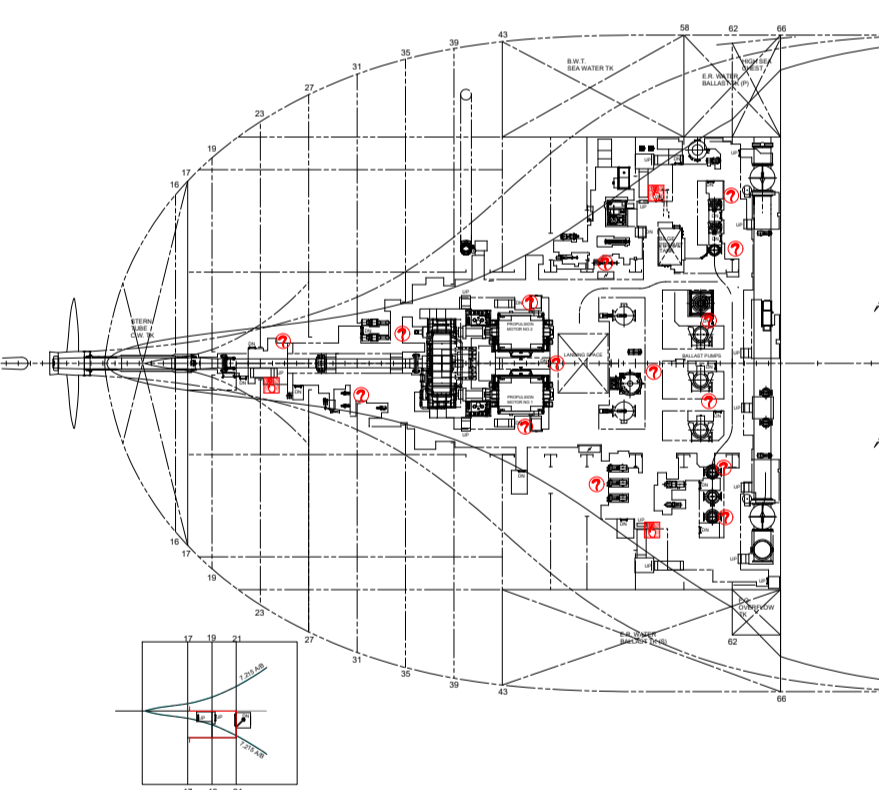
E/R 3RD DECK

S/G ROOM (4TH DECK LEVEL)

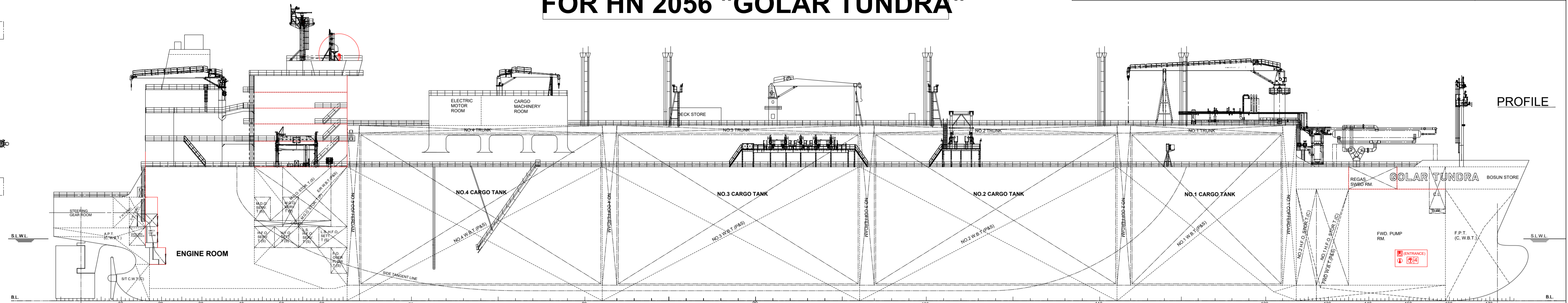
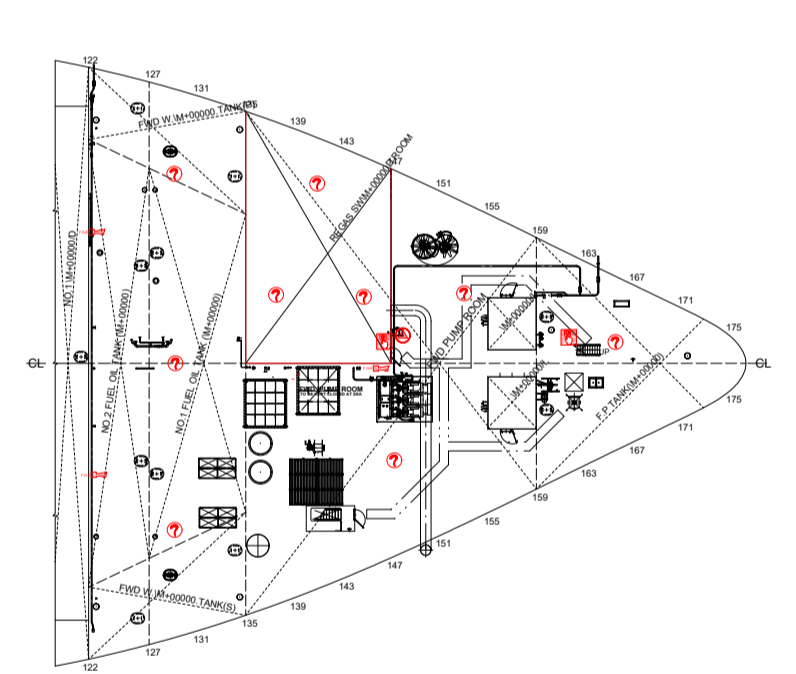


E/R 4TH DECK

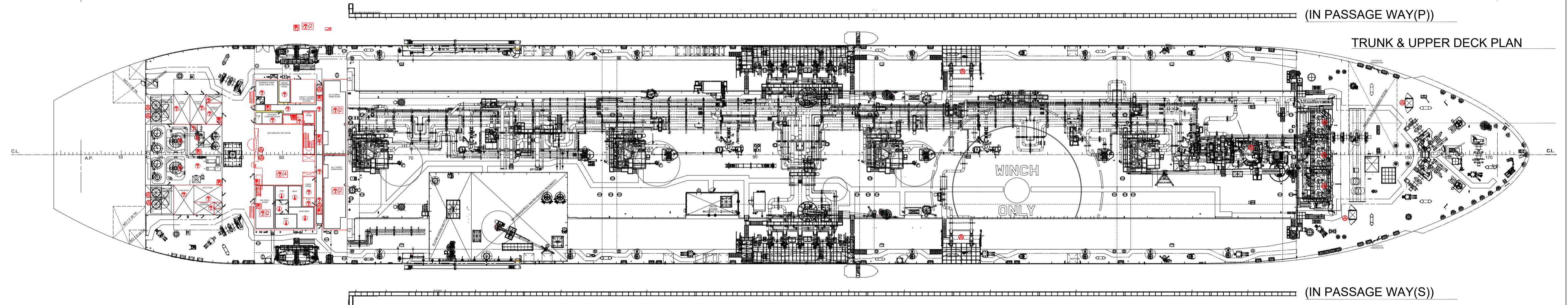
E/R FLOOR DECK



BOSUN STORE



PROFILE



(IN PASSAGE WAY(P))

TRUNK & UPPER DECK PLAN

(IN PASSAGE WAY(S))

| AND ALARM DEVICES FIRE DETECTORS INDICATORS | ACC. B-DECK | ACC. A-DECK | ACC. D-DECK | ACC. C-DECK | AFT. SUNKEN DECK | E/R 2ND DECK | S/G ROOM | E/R 3RD DECK | S/G ROOM (4TH DECK LEVEL) | E/R 4TH DECK | E/R FLOOR DECK | BOSUN STORE | | | | | | | | | |
|---|-------------|-------------|-------------|-------------|------------------|--------------|----------|--------------|---------------------------|--------------|----------------|-------------|---|----|----|----|----|---|----|-----|----|
| FIRE ALARM CENTRAL CABINET | | | | | | | 1 | | | | | | | | | | | | | | |
| FIRE CONTROL / REPEATER PANEL | | | | | | | | 1 | 1 | | | | | | | | | | | | |
| FIRE REPEATER PANEL | | | | | | | | | | 1 | | | | | | | | | | | |
| ELECTRIC HORN WITH RATING LIGHT(GEN./FIRE) | | | | | | | | | 3 | | | | | | | | | | | | |
| MANUALLY OPERATED CALL POINT | | | | | | | | | | | | | | | | | | | | | |
| SPACE OR GROUP OF SPACES MONITORED BY HEAT DETECTOR | | | | | | 1 | 8 | 4 | 5 | 7 | 3 | 1 | 2 | 5 | 5 | 2 | 3 | 1 | 8 | 2 | 57 |
| SPACE OR GROUP OF SPACES MONITORED BY SMOKE DETECTOR | | | | | | 1 | 5 | 2 | | | | | | | | | | | | 9 | |
| SPACE OR GROUP OF SPACES MONITORED BY FLAME DETECTOR | | | | | | 4 | 23 | 26 | 39 | 36 | 35 | 11 | 9 | 26 | 30 | 36 | 15 | 6 | 25 | 321 | |
| SPACE OR GROUP OF SPACES MONITORED BY SMOKE & HEAT DETECTOR (DUAL TYPE) | | | | | | | | | | | | | | | | | | | | 12 | |
| SPACE OR GROUP OF SPACES MONITORED BY GAS DETECTOR | | | | | | 5 | 4 | 3 | 3 | 2 | | | 1 | 1 | 23 | 2 | | | | 15 | |
| | | | | | | | | | | | | | | | | | | | | 56 | |

| REV. | 01 | PRIMA EMISSIONE | 29/05/23 | DA | AR | GR |
|------|----|--|-----------|---|----------------|----------------|
| | | DESCRIZIONE - DESCRIPTION | DATA DATE | DIS. CHK'D | CONTR. CHK'D | APPROV. APPR'D |
| | | Tecnologia Ricerca Rischi | | COMMESSA JOB 72438 | | |
| | | FSRU ALTO TIRRENO Loc. Vado Ligure (SV) | | DA | AR | GR |
| | | ALLEGATO AL RAPPORTO PRELIMINARE DI SICUREZZA (NOF) | | DATA-DATE MAGGIO 2023 | | |
| | | Allegato C.8.1 Planimetria rilevatori | | SCALA PRINC. MAIN SCALE 1:500 | | |
| | | | | DIS. N. - DWG Nr. 72438-C.8.1- Plan Rilevatori | | |
| | | | | FOGLIO SHEET 1 | DI OF 1 | |
| | | | | REV. 0 | 1 | 2 |
| | | | | 4 | 5 | 6 |
| | | | | | | 7 |
| | | | | | | A1 |

PROPRIETA' DELLA TRR S.r.l. OSIO SOTTO (BG). LE RIPRODUZIONI NON AUTORIZZATE SONO VIETATE. - Property of TRR S.r.l. Osio Sotto (BG) - Italy. Reproduction and divulgation forbidden