

Annex - A1 to the work procedure

Measuring station first installation report

Measurement Station of			GUALDO TADINO (PG)	
Station Code			LIDAR	
Grid UTM	Map datum: WGS 84	Altitudine: qt. s.l.m. 1059	Latitude Y: NORD N 43° 13' 45.1"	Longitude X: EST E 12° 45' 29.3"
UTM WGS84 – Coordinates: 33T 317947 4788707				



LIFTING OPERATIONS

The Team placed the Lidar on the roof of the Social-Health Center “Il Germoglio”, in the South district of Cerqueto (PG). The building is 5 meters high so the lifting operations occurred by means of an elevating platform. The Lidar has been positioned in such a way that no obstacles hindered its functioning.

M O U N T I N G	Installation Company		IDNAMIC ITALIA S.r.l.		
	Installation date		Date: ---		
	Datalogger measurement start time		Date: ---	Time: 17.00	
	Installation correctness check and real time verification (See Annex 7)			<input checked="" type="checkbox"/> YES	<input type="checkbox"/> NO
Date: 17/11/2022		Mounting responsible: Lazebnyy Maksym		Signature 	

ANNEX - A 6/1 to the work procedure

Measuring station first installation report

Measurement Station of

GUALDO TADINO (PG)

Station Code

LIDAR

Satellite image of the installation site



The remote sensing device has been installed above the surface of the roof

Date: **17/11/2022**

Operator signature: **Lazebnyy Maksym**



ANNEX - A 6/3 to the work procedure

Measuring station first installation report

Measurement Station of

GUALDO TADINO (PG)

Station Code

LIDAR


Picture of the site after the installation works



To ensure the stabilisation of the component, the three side bags were filled with water

Date: **17/11/2022**

Operator signature: **Lazebnyy Maksym**



ANNEX - A 6/4 to the work procedure

Measuring station first installation report

Measurement Station of

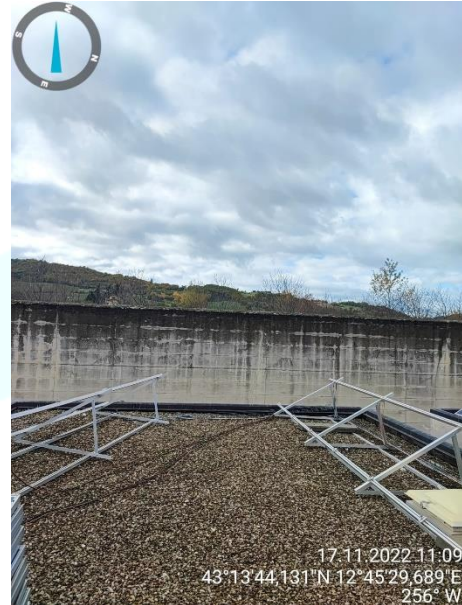
GUALDO TADINO (PG)

Station Code

LIDAR



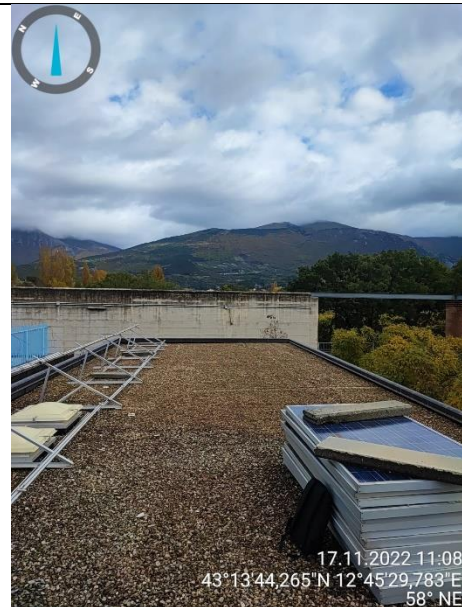
NORTH



EAST



SOUTH



WEST

Date: **17/11/2022**

Operator signature: **Lazebnyy Maksym**

Lazebnyy Maksym

ANNEX - A 6/6 to the work procedure

Measuring station first installation report

Measurement Station of

GUALDO TADINO (PG)

Station Code

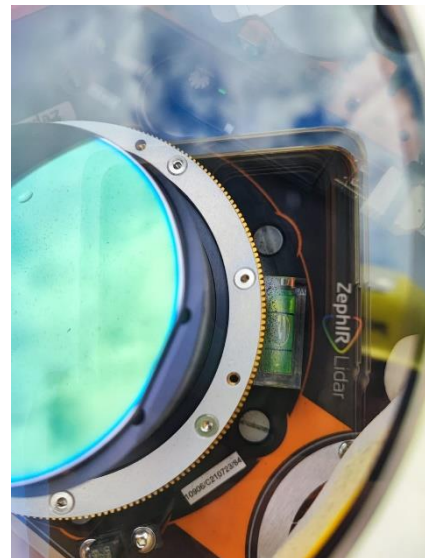
LIDAR



Baro-Thermo-hygrometer S/N: 4252031



Coordinates with compass



Leveling index

Date: **17/11/2022**

Operator signature: **Lazebnyy Maksym**

Lazebnyy Maksym

ANNEX - A 9/1 to the work procedure

Measuring station first installation report

Measurement Station of

GUALDO TADINO (PG)

Station Code

LIDAR

CERTIFICATE UNI EN ISO 9001:2015

PLC Srl
ISPEZIONI
VERIFICHE
CERTIFICAZIONI

00198 Roma
Via Anicora, 2 F
Tel. 06.85.35.08.30
Fax 06.85.30.09.69
www.picart.com
E-mail: info@picart.com
Iscr. R.E.A. 1074669
C.F. / P.IVA 08118891004

SISTEMA GESTIONE QUALITÀ

CERTIFICATO N° 453/A/2008

Si attesta che il Sistema di Gestione per la Qualità di:



IDNAmic ITALIA S.r.l.

Area PIP Strada Statale 212 km 9,00 snc - 82020 Pietrelcina (BN)

Applicato nell'Unità Operativa sita in

Area PIP Strada Statale 212 km 9,00 snc - 82020 Pietrelcina (BN)

Sistema di Gestione per la Qualità conforme alla norma

UNI EN ISO 9001:2015

valutato secondo le prescrizioni del Regolamento Tecnico RT-05 (*)

Relativamente a:

settore IAF Campo di applicazione:

28(*) **Progettazione, fornitura, assemblaggio, installazione, manutenzione, rimozione di torri anemometriche e relativa strumentazione**

settore IAF Campo di applicazione:

35 **Elaborazione ed analisi dei dati del vento**

Data 1° emissione **2008-06-03**

Data di aggiornamento **2020-06-22**

Data di scadenza **2023-06-02**

La Direzione

Antonella De Vitis
Dott.ssa Antonella De Vitis

La presente certificazione si intende riferita agli aspetti gestionali dell'impresa nel suo complesso ed è utilizzabile ai fini della qualificazione delle imprese di costruzione ai sensi dell'articolo 84 del D.Lgs. 50/2016 e s.m.i. e Linee Guide ANAC applicabili.

La validità del presente certificato è subordinata a sorveglianza periodica e al riesame completo del sistema di gestione aziendale con periodicità triennale.

Per informazioni puntuali ed aggiornate circa eventuali variazioni intervenute nello stato della certificazione di cui al presente certificato, si prega di contattare il n° telefonico 06 85352830 o l'indirizzo e-mail info@picart.com



SDG N°059A - SGA R° 040 D

Membro di IFA/IAF/ISO di sistemi di accreditamento: ISO 9001, ISO 9004, ISO 14001, ISO 45001, ISO 50001, ISO 55001, ISO 27001, ISO 27002, ISO 27005, ISO 27032, ISO 27035, ISO 27036, ISO 27037, ISO 27038, ISO 27039, ISO 27040, ISO 27041, ISO 27042, ISO 27043, ISO 27044, ISO 27045, ISO 27046, ISO 27047, ISO 27048, ISO 27049, ISO 27050, ISO 27051, ISO 27052, ISO 27053, ISO 27054, ISO 27055, ISO 27056, ISO 27057, ISO 27058, ISO 27059, ISO 27060, ISO 27061, ISO 27062, ISO 27063, ISO 27064, ISO 27065, ISO 27066, ISO 27067, ISO 27068, ISO 27069, ISO 27070, ISO 27071, ISO 27072, ISO 27073, ISO 27074, ISO 27075, ISO 27076, ISO 27077, ISO 27078, ISO 27079, ISO 27080, ISO 27081, ISO 27082, ISO 27083, ISO 27084, ISO 27085, ISO 27086, ISO 27087, ISO 27088, ISO 27089, ISO 27090, ISO 27091, ISO 27092, ISO 27093, ISO 27094, ISO 27095, ISO 27096, ISO 27097, ISO 27098, ISO 27099, ISO 27100, ISO 27101, ISO 27102, ISO 27103, ISO 27104, ISO 27105, ISO 27106, ISO 27107, ISO 27108, ISO 27109, ISO 27110, ISO 27111, ISO 27112, ISO 27113, ISO 27114, ISO 27115, ISO 27116, ISO 27117, ISO 27118, ISO 27119, ISO 27120, ISO 27121, ISO 27122, ISO 27123, ISO 27124, ISO 27125, ISO 27126, ISO 27127, ISO 27128, ISO 27129, ISO 27130, ISO 27131, ISO 27132, ISO 27133, ISO 27134, ISO 27135, ISO 27136, ISO 27137, ISO 27138, ISO 27139, ISO 27140, ISO 27141, ISO 27142, ISO 27143, ISO 27144, ISO 27145, ISO 27146, ISO 27147, ISO 27148, ISO 27149, ISO 27150, ISO 27151, ISO 27152, ISO 27153, ISO 27154, ISO 27155, ISO 27156, ISO 27157, ISO 27158, ISO 27159, ISO 27160, ISO 27161, ISO 27162, ISO 27163, ISO 27164, ISO 27165, ISO 27166, ISO 27167, ISO 27168, ISO 27169, ISO 27170, ISO 27171, ISO 27172, ISO 27173, ISO 27174, ISO 27175, ISO 27176, ISO 27177, ISO 27178, ISO 27179, ISO 27180, ISO 27181, ISO 27182, ISO 27183, ISO 27184, ISO 27185, ISO 27186, ISO 27187, ISO 27188, ISO 27189, ISO 27190, ISO 27191, ISO 27192, ISO 27193, ISO 27194, ISO 27195, ISO 27196, ISO 27197, ISO 27198, ISO 27199, ISO 27200, ISO 27201, ISO 27202, ISO 27203, ISO 27204, ISO 27205, ISO 27206, ISO 27207, ISO 27208, ISO 27209, ISO 27210, ISO 27211, ISO 27212, ISO 27213, ISO 27214, ISO 27215, ISO 27216, ISO 27217, ISO 27218, ISO 27219, ISO 27220, ISO 27221, ISO 27222, ISO 27223, ISO 27224, ISO 27225, ISO 27226, ISO 27227, ISO 27228, ISO 27229, ISO 27230, ISO 27231, ISO 27232, ISO 27233, ISO 27234, ISO 27235, ISO 27236, ISO 27237, ISO 27238, ISO 27239, ISO 27240, ISO 27241, ISO 27242, ISO 27243, ISO 27244, ISO 27245, ISO 27246, ISO 27247, ISO 27248, ISO 27249, ISO 27250, ISO 27251, ISO 27252, ISO 27253, ISO 27254, ISO 27255, ISO 27256, ISO 27257, ISO 27258, ISO 27259, ISO 27260, ISO 27261, ISO 27262, ISO 27263, ISO 27264, ISO 27265, ISO 27266, ISO 27267, ISO 27268, ISO 27269, ISO 27270, ISO 27271, ISO 27272, ISO 27273, ISO 27274, ISO 27275, ISO 27276, ISO 27277, ISO 27278, ISO 27279, ISO 27280, ISO 27281, ISO 27282, ISO 27283, ISO 27284, ISO 27285, ISO 27286, ISO 27287, ISO 27288, ISO 27289, ISO 27290, ISO 27291, ISO 27292, ISO 27293, ISO 27294, ISO 27295, ISO 27296, ISO 27297, ISO 27298, ISO 27299, ISO 27300, ISO 27301, ISO 27302, ISO 27303, ISO 27304, ISO 27305, ISO 27306, ISO 27307, ISO 27308, ISO 27309, ISO 27310, ISO 27311, ISO 27312, ISO 27313, ISO 27314, ISO 27315, ISO 27316, ISO 27317, ISO 27318, ISO 27319, ISO 27320, ISO 27321, ISO 27322, ISO 27323, ISO 27324, ISO 27325, ISO 27326, ISO 27327, ISO 27328, ISO 27329, ISO 27330, ISO 27331, ISO 27332, ISO 27333, ISO 27334, ISO 27335, ISO 27336, ISO 27337, ISO 27338, ISO 27339, ISO 27340, ISO 27341, ISO 27342, ISO 27343, ISO 27344, ISO 27345, ISO 27346, ISO 27347, ISO 27348, ISO 27349, ISO 27350, ISO 27351, ISO 27352, ISO 27353, ISO 27354, ISO 27355, ISO 27356, ISO 27357, ISO 27358, ISO 27359, ISO 27360, ISO 27361, ISO 27362, ISO 27363, ISO 27364, ISO 27365, ISO 27366, ISO 27367, ISO 27368, ISO 27369, ISO 27370, ISO 27371, ISO 27372, ISO 27373, ISO 27374, ISO 27375, ISO 27376, ISO 27377, ISO 27378, ISO 27379, ISO 27380, ISO 27381, ISO 27382, ISO 27383, ISO 27384, ISO 27385, ISO 27386, ISO 27387, ISO 27388, ISO 27389, ISO 27390, ISO 27391, ISO 27392, ISO 27393, ISO 27394, ISO 27395, ISO 27396, ISO 27397, ISO 27398, ISO 27399, ISO 27400, ISO 27401, ISO 27402, ISO 27403, ISO 27404, ISO 27405, ISO 27406, ISO 27407, ISO 27408, ISO 27409, ISO 27410, ISO 27411, ISO 27412, ISO 27413, ISO 27414, ISO 27415, ISO 27416, ISO 27417, ISO 27418, ISO 27419, ISO 27420, ISO 27421, ISO 27422, ISO 27423, ISO 27424, ISO 27425, ISO 27426, ISO 27427, ISO 27428, ISO 27429, ISO 27430, ISO 27431, ISO 27432, ISO 27433, ISO 27434, ISO 27435, ISO 27436, ISO 27437, ISO 27438, ISO 27439, ISO 27440, ISO 27441, ISO 27442, ISO 27443, ISO 27444, ISO 27445, ISO 27446, ISO 27447, ISO 27448, ISO 27449, ISO 27450, ISO 27451, ISO 27452, ISO 27453, ISO 27454, ISO 27455, ISO 27456, ISO 27457, ISO 27458, ISO 27459, ISO 27460, ISO 27461, ISO 27462, ISO 27463, ISO 27464, ISO 27465, ISO 27466, ISO 27467, ISO 27468, ISO 27469, ISO 27470, ISO 27471, ISO 27472, ISO 27473, ISO 27474, ISO 27475, ISO 27476, ISO 27477, ISO 27478, ISO 27479, ISO 27480, ISO 27481, ISO 27482, ISO 27483, ISO 27484, ISO 27485, ISO 27486, ISO 27487, ISO 27488, ISO 27489, ISO 27490, ISO 27491, ISO 27492, ISO 27493, ISO 27494, ISO 27495, ISO 27496, ISO 27497, ISO 27498, ISO 27499, ISO 27500, ISO 27501, ISO 27502, ISO 27503, ISO 27504, ISO 27505, ISO 27506, ISO 27507, ISO 27508, ISO 27509, ISO 27510, ISO 27511, ISO 27512, ISO 27513, ISO 27514, ISO 27515, ISO 27516, ISO 27517, ISO 27518, ISO 27519, ISO 27520, ISO 27521, ISO 27522, ISO 27523, ISO 27524, ISO 27525, ISO 27526, ISO 27527, ISO 27528, ISO 27529, ISO 27530, ISO 27531, ISO 27532, ISO 27533, ISO 27534, ISO 27535, ISO 27536, ISO 27537, ISO 27538, ISO 27539, ISO 27540, ISO 27541, ISO 27542, ISO 27543, ISO 27544, ISO 27545, ISO 27546, ISO 27547, ISO 27548, ISO 27549, ISO 27550, ISO 27551, ISO 27552, ISO 27553, ISO 27554, ISO 27555, ISO 27556, ISO 27557, ISO 27558, ISO 27559, ISO 27560, ISO 27561, ISO 27562, ISO 27563, ISO 27564, ISO 27565, ISO 27566, ISO 27567, ISO 27568, ISO 27569, ISO 27570, ISO 27571, ISO 27572, ISO 27573, ISO 27574, ISO 27575, ISO 27576, ISO 27577, ISO 27578, ISO 27579, ISO 27580, ISO 27581, ISO 27582, ISO 27583, ISO 27584, ISO 27585, ISO 27586, ISO 27587, ISO 27588, ISO 27589, ISO 27590, ISO 27591, ISO 27592, ISO 27593, ISO 27594, ISO 27595, ISO 27596, ISO 27597, ISO 27598, ISO 27599, ISO 27600, ISO 27601, ISO 27602, ISO 27603, ISO 27604, ISO 27605, ISO 27606, ISO 27607, ISO 27608, ISO 27609, ISO 27610, ISO 27611, ISO 27612, ISO 27613, ISO 27614, ISO 27615, ISO 27616, ISO 27617, ISO 27618, ISO 27619, ISO 27620, ISO 27621, ISO 27622, ISO 27623, ISO 27624, ISO 27625, ISO 27626, ISO 27627, ISO 27628, ISO 27629, ISO 27630, ISO 27631, ISO 27632, ISO 27633, ISO 27634, ISO 27635, ISO 27636, ISO 27637, ISO 27638, ISO 27639, ISO 27640, ISO 27641, ISO 27642, ISO 27643, ISO 27644, ISO 27645, ISO 27646, ISO 27647, ISO 27648, ISO 27649, ISO 27650, ISO 27651, ISO 27652, ISO 27653, ISO 27654, ISO 27655, ISO 27656, ISO 27657, ISO 27658, ISO 27659, ISO 27660, ISO 27661, ISO 27662, ISO 27663, ISO 27664, ISO 27665, ISO 27666, ISO 27667, ISO 27668, ISO 27669, ISO 27670, ISO 27671, ISO 27672, ISO 27673, ISO 27674, ISO 27675, ISO 27676, ISO 27677, ISO 27678, ISO 27679, ISO 27680, ISO 27681, ISO 27682, ISO 27683, ISO 27684, ISO 27685, ISO 27686, ISO 27687, ISO 27688, ISO 27689, ISO 27690, ISO 27691, ISO 27692, ISO 27693, ISO 27694, ISO 27695, ISO 27696, ISO 27697, ISO 27698, ISO 27699, ISO 27700, ISO 27701, ISO 27702, ISO 27703, ISO 27704, ISO 27705, ISO 27706, ISO 27707, ISO 27708, ISO 27709, ISO 27710, ISO 27711, ISO 27712, ISO 27713, ISO 27714, ISO 27715, ISO 27716, ISO 27717, ISO 27718, ISO 27719, ISO 27720, ISO 27721, ISO 27722, ISO 27723, ISO 27724, ISO 27725, ISO 27726, ISO 27727, ISO 27728, ISO 27729, ISO 27730, ISO 27731, ISO 27732, ISO 27733, ISO 27734, ISO 27735, ISO 27736, ISO 27737, ISO 27738, ISO 27739, ISO 27740, ISO 27741, ISO 27742, ISO 27743, ISO 27744, ISO 27745, ISO 27746, ISO 27747, ISO 27748, ISO 27749, ISO 27750, ISO 27751, ISO 27752, ISO 27753, ISO 27754, ISO 27755, ISO 27756, ISO 27757, ISO 27758, ISO 27759, ISO 27760, ISO 27761, ISO 27762, ISO 27763, ISO 27764, ISO 27765, ISO 27766, ISO 27767, ISO 27768, ISO 27769, ISO 27770, ISO 27771, ISO 27772, ISO 27773, ISO 27774, ISO 27775, ISO 27776, ISO 27777, ISO 27778, ISO 27779, ISO 27780, ISO 27781, ISO 27782, ISO 27783, ISO 27784, ISO 27785, ISO 27786, ISO 27787, ISO 27788, ISO 27789, ISO 27790, ISO 27791, ISO 27792, ISO 27793, ISO 27794, ISO 27795, ISO 27796, ISO 27797, ISO 27798, ISO 27799, ISO 27800, ISO 27801, ISO 27802, ISO 27803, ISO 27804, ISO 27805, ISO 27806, ISO 27807, ISO 27808, ISO 27809, ISO 27810, ISO 27811, ISO 27812, ISO 27813, ISO 27814, ISO 27815, ISO 27816, ISO 27817, ISO 27818, ISO 27819, ISO 27820, ISO 27821, ISO 27822, ISO 27823, ISO 27824, ISO 27825, ISO 27826, ISO 27827, ISO 27828, ISO 27829, ISO 27830, ISO 27831, ISO 27832, ISO 27833, ISO 27834, ISO 27835, ISO 27836, ISO 27837, ISO 27838, ISO 27839, ISO 27840, ISO 27841, ISO 27842, ISO 27843, ISO 27844, ISO 27845, ISO 27846, ISO 27847, ISO 27848, ISO 27849, ISO 27850, ISO 27851, ISO 27852, ISO 27853, ISO 27854, ISO 27855, ISO 27856, ISO 27857, ISO 27858, ISO 27859, ISO 27860, ISO 27861, ISO 27862, ISO 27863, ISO 27864, ISO 27865, ISO 27866, ISO 27867, ISO 27868, ISO 27869, ISO 27870, ISO 27871, ISO 27872, ISO 27873, ISO 27874, ISO 27875, ISO 27876, ISO 27877, ISO 27878, ISO 27879, ISO 27880, ISO 27881, ISO 27882, ISO 27883, ISO 27884, ISO 27885, ISO 27886, ISO 27887, ISO 27888, ISO 27889, ISO 27890, ISO 27891, ISO 27892, ISO 27893, ISO 27894, ISO 27895, ISO 27896, ISO 27897, ISO 27898, ISO 27899, ISO 27900, ISO 27901, ISO 27902, ISO 27903, ISO 27904, ISO 27905, ISO 27906, ISO 27907, ISO 27908, ISO 27909, ISO 27910, ISO 27911, ISO 27912, ISO 27913, ISO 27914, ISO 27915, ISO 27916, ISO 27917, ISO 27918, ISO 27919, ISO 27920, ISO 27921, ISO 27922, ISO 27923, ISO 27924, ISO 27925, ISO 27926, ISO 27927, ISO 27928, ISO 27929, ISO 27930, ISO 27931, ISO 27932, ISO 27933, ISO 27934, ISO 27935, ISO 27936, ISO 27937, ISO 27938, ISO 27939, ISO 27940, ISO 27941, ISO 27942, ISO 27943, ISO 27944, ISO 27945, ISO 27946, ISO 27947, ISO 27948, ISO 27949, ISO 27950, ISO 27951, ISO 27952, ISO 27953, ISO 27954, ISO 27955, ISO 27956, ISO 27957, ISO 27958, ISO 27959, ISO 27960, ISO 27961, ISO 27962, ISO 27963, ISO 27964, ISO 27965, ISO 27966, ISO 27967, ISO 27968, ISO 27969, ISO 27970, ISO 27971, ISO 27972, ISO 27973, ISO 27974, ISO 27975, ISO 27976, ISO 27977, ISO 27978, ISO 27979, ISO 27980, ISO 27981, ISO 27982, ISO 27983, ISO 27984, ISO 27985, ISO 27986, ISO 27987, ISO 27988, ISO 27989, ISO 27990, ISO 27991, ISO 27992, ISO 27993, ISO 27994, ISO 27995, ISO 27996, ISO 27997, ISO 27998, ISO 27999, ISO 28000, ISO 28001, ISO 28002, ISO 28003, ISO 28004, ISO 28005, ISO 28006, ISO 28007, ISO 28008, ISO 28009, ISO 28010, ISO 28011, ISO 28012, ISO 28013, ISO 28014, ISO 28015, ISO 28016, ISO 28017, ISO 28018, ISO 28019, ISO 28020, ISO 28021, ISO 28022, ISO 28023, ISO 28024, ISO 28025, ISO 28026, ISO 28027, ISO 28028, ISO 28029, ISO 28030, ISO 28031, ISO 28032, ISO 28033, ISO 28034, ISO 28035, ISO 28036, ISO 28037, ISO 28038, ISO 28039, ISO 28040, ISO 28041, ISO 28042, ISO 28043, ISO 28044, ISO 28045, ISO 28046, ISO 28047, ISO 28048, ISO 28049, ISO 28050, ISO 28051, ISO 28052, ISO 28053, ISO 28054, ISO 28055, ISO 28056, ISO 28057, ISO 28058, ISO 28059, ISO 28060, ISO 28061, ISO 28062, ISO 28063, ISO 28064, ISO 28065, ISO 28066, ISO 28067, ISO 28068, ISO 28069, ISO 28070, ISO 28071, ISO 28072, ISO 28073, ISO 28074, ISO 28075, ISO 28076, ISO 28077, ISO 28078, ISO 28079, ISO 28080, ISO 28081, ISO 28082, ISO 28083, ISO 28084, ISO 28085, ISO 28086, ISO 28087, ISO 28088, ISO 28089, ISO 28090, ISO 28091, ISO 28092, ISO 28093, ISO 28094, ISO 28095, ISO 28096, ISO 28097, ISO 28098, ISO 28099, ISO 28100, ISO 28101, ISO 28102, ISO 28103, ISO 28104, ISO 28105, ISO 28106, ISO 28107, ISO 28108, ISO 28109, ISO 28110, ISO 28111, ISO 28112, ISO 28113, ISO 28114, ISO 28115, ISO 28116, ISO 28117, ISO 28118, ISO 28119, ISO 28120, ISO 28121, ISO 28122, ISO 28123, ISO 28124, ISO 28125, ISO 28126, ISO 28127, ISO 28128, ISO 28129, ISO 28130, ISO 28131, ISO 28132, ISO 28133, ISO 28134, ISO 28135, ISO 28136, ISO 28137, ISO 28138, ISO 28139, ISO 28140, ISO 28141, ISO 28142, ISO 28143, ISO 28144, ISO 28145, ISO 28146, ISO 28147, ISO 28148, ISO 28149, ISO 28150, ISO 28151, ISO 28152, ISO 28153, ISO 28154, ISO 28155, ISO 28156, ISO 28157, ISO 28158, ISO 28159, ISO 28160, ISO 28161, ISO 28162, ISO 28163, ISO 28164, ISO 28165, ISO 28166, ISO 28167, ISO 28168, ISO 28169, ISO 28170, ISO 28171, ISO 28172, ISO 28173, ISO 28174, ISO 28175, ISO 28176, ISO 28177, ISO 28178, ISO 28179, ISO 28180, ISO 28181, ISO 28182, ISO 28183, ISO 28184, ISO 28185, ISO 28186, ISO 28187, ISO 28188, ISO 28189, ISO 28190, ISO 28191, ISO 28192, ISO 28193, ISO 28194, ISO 28195, ISO 28196, ISO 28197, ISO 28198, ISO 28199, ISO 28200, ISO 28201, ISO 28202, ISO 28203, ISO 28204, ISO 28205, ISO 28206, ISO 28207, ISO 28208, ISO 28209, ISO 28210, ISO 28211, ISO 28212, ISO 28213, ISO 28214, ISO 28215, ISO 28216, ISO 28217, ISO 28218, ISO 28219, ISO 28220, ISO 28221, ISO 28222, ISO 28223, ISO 28224, ISO 28225, ISO 28226, ISO 28227, ISO 28228, ISO 28229, ISO 28230, ISO 28231, ISO 28232, ISO 28233, ISO 28234, ISO 28235, ISO 28236, ISO 28237, ISO 28238, ISO 28239, ISO 28240, ISO 28241, ISO 28242, ISO 28243, ISO 28244, ISO 28245, ISO 28246, ISO 28247, ISO 28248, ISO 28249, ISO 28250, ISO 28251, ISO 28252, ISO 28253, ISO 28254, ISO 28255, ISO 28256, ISO 28257, ISO 28258, ISO 28259, ISO 28260, ISO 28261, ISO 28262, ISO 28263, ISO 28264, ISO 28265, ISO 28266, ISO 28267, ISO 28268, ISO 28269, ISO 28270, ISO 28271, ISO 28272, ISO 28273, ISO 28274, ISO 28275, ISO 28276, ISO 28277, ISO 28278, ISO 28279, ISO 28280, ISO 28281, ISO 28282, ISO 28283, ISO 28284, ISO 28285, ISO 28286, ISO 28287, ISO 28288, ISO 28289, ISO 28290, ISO 28291, ISO 28292, ISO 28293, ISO 28294, ISO 28295, ISO 28296, ISO

ANNEX - A 9/2 to the work procedure

Measuring station first installation report

Measurement Station of

GUALDO TADINO (PG)

Station Code

LIDAR

CERTIFICATE BS OHSAS 45001:2018



IONet, the association of the world's first class certification bodies, is the largest provider of management system certification in the world. IONet is composed of more than 20 bodies and counts over 150 subsidiaries all over the globe.

CERTIFICATO N. OHS-806
CERTIFICATE No.

Si certifica che il Sistema di Gestione della Sicurezza e della Salute sul luogo di lavoro di
It is hereby certified that the Occupational Health and Safety Management System of

IDNAMIC ITALIA S.R.L.

S.S. 212 KM 9 AREA P.I.P. 82020 Pietrelcina (BN) ITALIA

nelle seguenti unità operative / in the following operational units

S.S. 212 KM 9 AREA P.I.P. 82020 Pietrelcina (BN) ITALIA E CANTIERI OPERATIVI

è conforme alla norma / is in compliance with the standard

ISO 45001:2018

per le seguenti attività / for the following activities

PROGETTAZIONE, ASSEMBLAGGIO, INSTALLAZIONE, MANUTENZIONE E RIMOZIONE DI TORRI
ANEMOMETRICHE E RELATIVA STRUMENTAZIONE. ELABORAZIONI ED ANALISI DEI DATI DEL VENTO.

DESIGN, ASSEMBLY, INSTALLATION, MAINTENANCE AND REMOVAL OF ANEMOMETRIC TOWERS AND RELATED
INSTRUMENTATION. WIND DATA PROCESSING AND ANALYSIS.

La validità del presente certificato è subordinata a sorveglianza periodica annuale / semestrale ed al riesame completo del sistema di gestione con periodicità triennale
The validity of this certificate is dependent on an annual / six monthly audit and on a complete review, every three years, of the management system
L'uso e la validità del presente certificato è soggetto al rispetto del documento RINA: Regolamento per la Certificazione dei Sistemi di Gestione della Sicurezza e Salute sul luogo di lavoro
The use and validity of this certificate are subject to compliance with the RINA document: Rules for the Certification of Occupational Health and Safety Management Systems

Prima emissione First issue	26.01.2012	Data decisione di rinnovo Renewal decision date	19.01.2021
Data scadenza Expiry Date	19.01.2024	Data revisione Revision date	19.01.2021

Gianluca De Fraia
Naples Management System
Certification, Head

RINA Services S.p.A.
Via Corsica 12 - 16126 Genova Italy



SCR N° 003 F
Membro negli Accordi di Riconoscimento RA, ISO e IAC
Agreement of RA, ISO and IAC
Mutual Recognition Agreements



www.cisq.org

CISQ è la Federazione Italiana di Organismi di Certificazione dei sistemi di gestione secondo
CISQ is the Italian Federation of management system Certification Bodies

Date: **17/11/2022**

Operator signature: **Lazebnyy Maksym**

ANNEX - A 9/2 to the work procedure

Measuring station first installation report

Measurement Station of

GUALDO TADINO (PG)

Station Code

LIDAR

CERTIFICATE ISO 14001:2015

CERTIFICATE
No. SCUK005401E

certifies that:

IDNAMIC ITALIA S.R.L.

Area PIP Strada Statale 212 km 9,00 snc - 82020 - Pietrelcina (BN), Italy

operates a management system that has been assessed as conforming to:

ISO 14001:2015

for the scope of activities :

Design, supply, assembly, installation, maintenance, removal of anemometer towers and related instrumentation. Wind data processing and analysis.

Issue date : 02 November 2021
Valid until : 01 November 2024 (Subject to adherence to the agreed ongoing programme, successful endorsements of certification following each audit and compliance with the terms and conditions of certification.)
Original date of certification : 02 November 2021

Mo Ghauri Operations Director SOCOTEC Certification UK

SOCOTEC Certification UK Ltd, 6 Gordano Court
Sarburt Close, Portishead, Bristol BS20 7FS
UNITED KINGDOM
<http://socotec-certification-international.co.uk>

Date: **17/11/2022**Operator signature: **Lazebnyy Maksym**