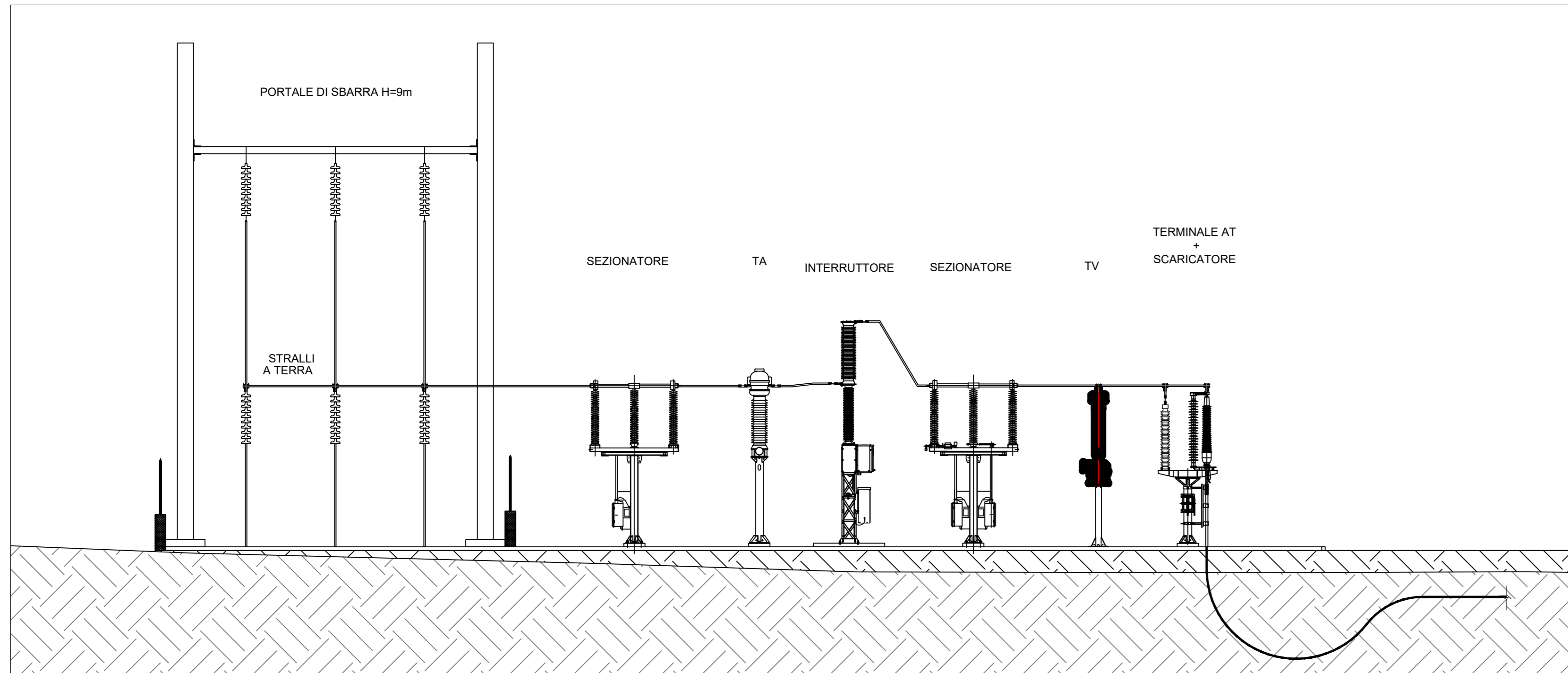
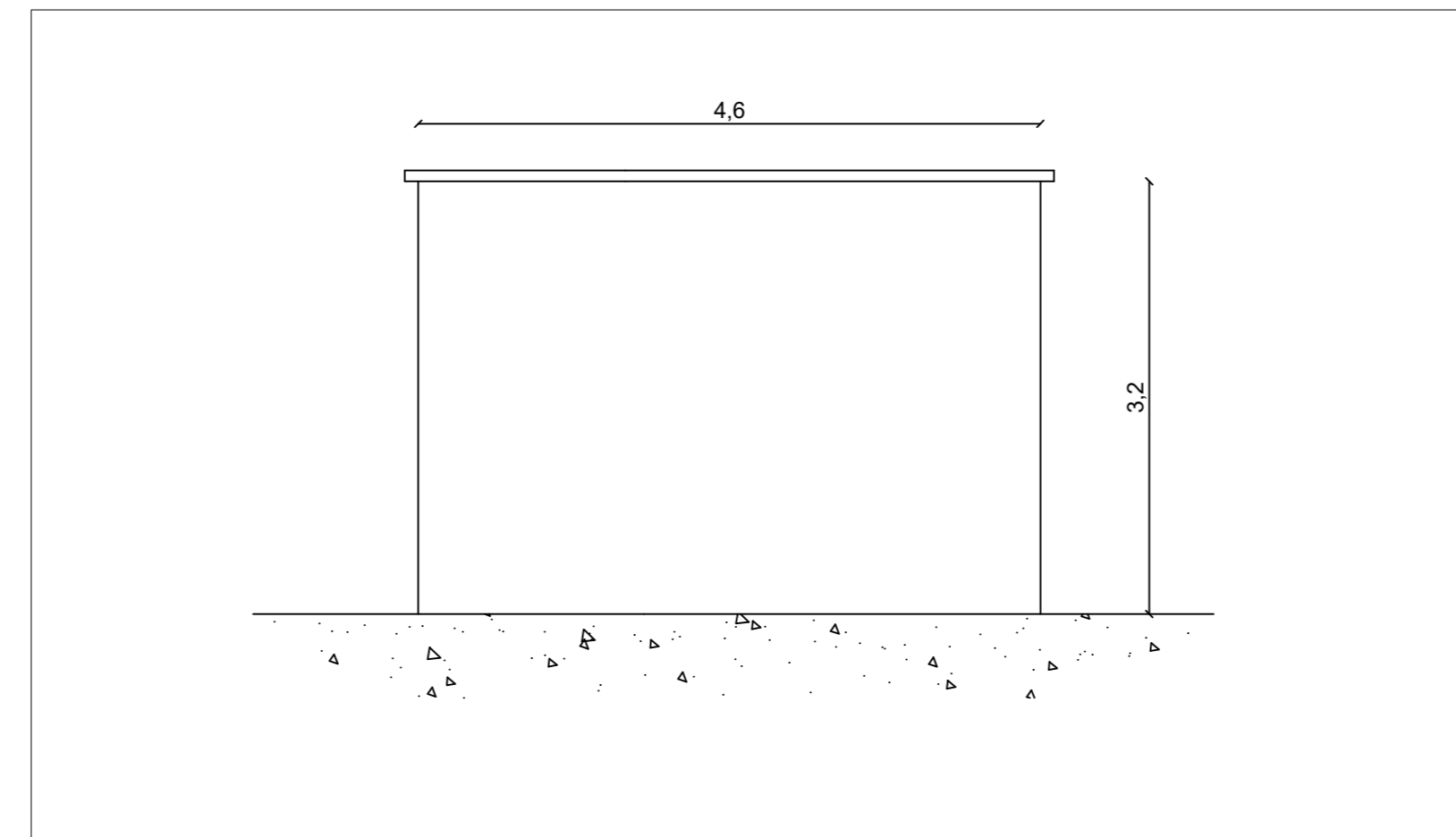


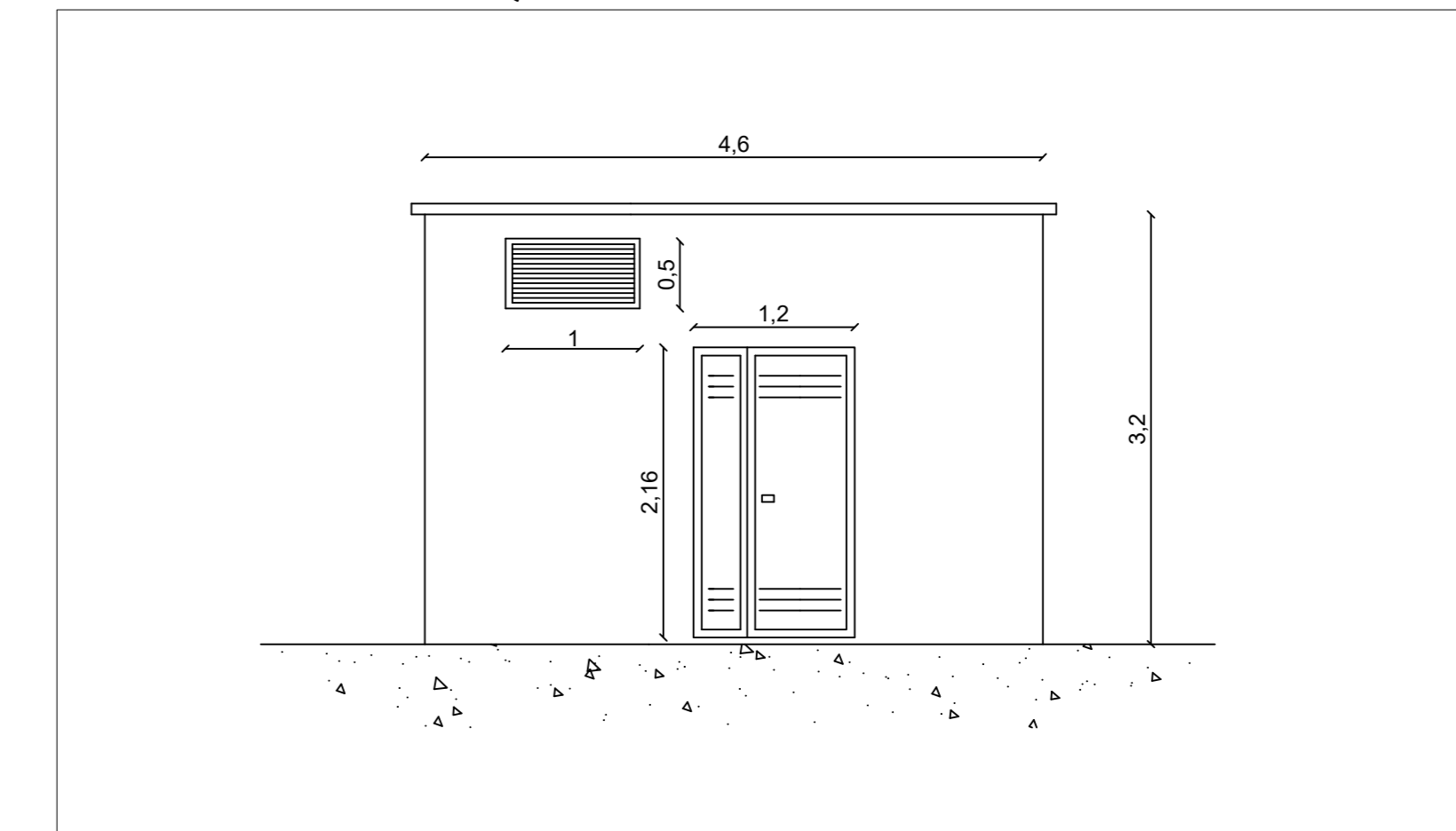
SEZIONE STALLO - SCALA 1:100



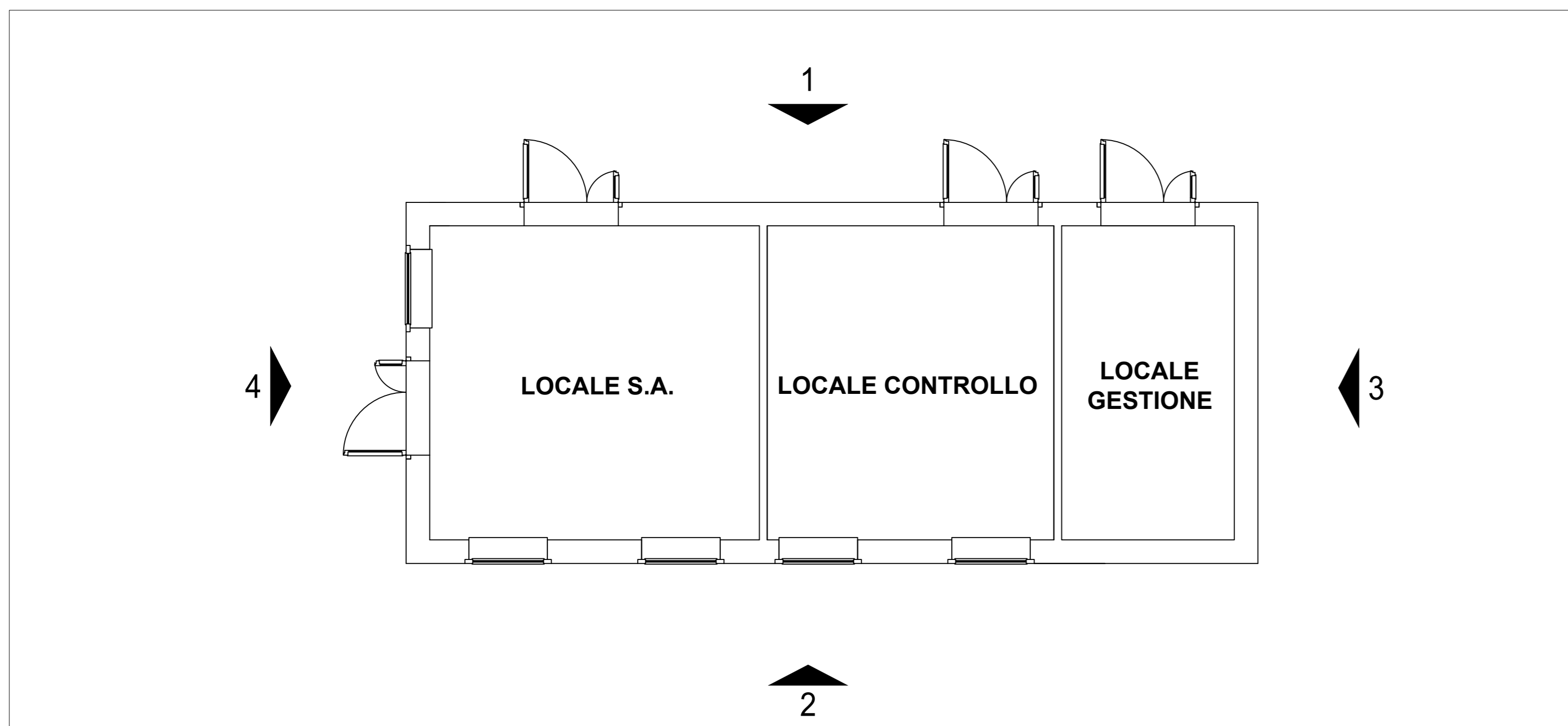
CABINA QMT SSE - VISTA 3 - SCALA 1:50



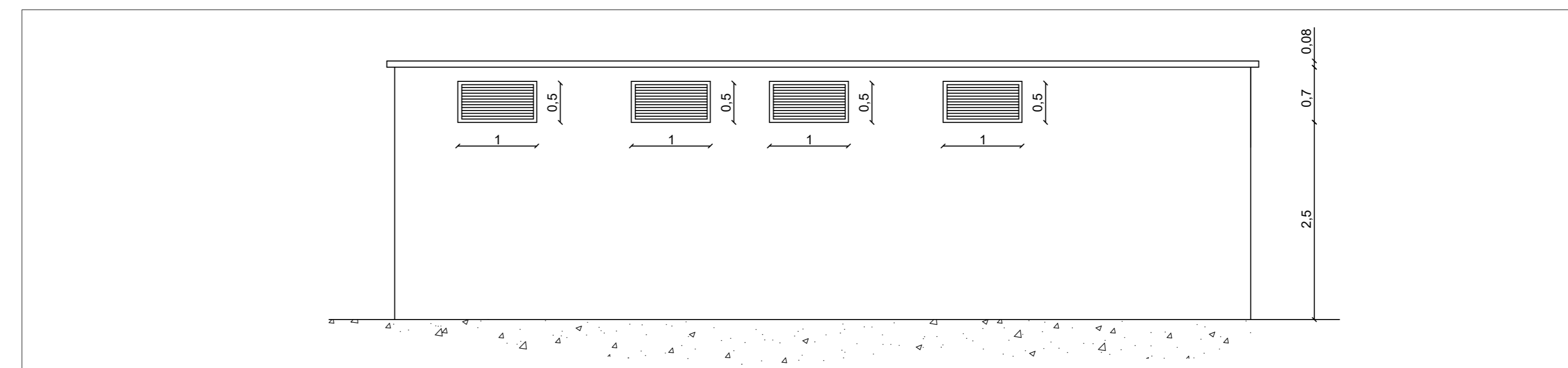
CABINA QMT SSE - VISTA 4 - SCALA 1:50



CABINA QMT SSE - PIANTA - SCALA 1:50



CABINA QMT SSE - VISTA 2 - SCALA 1:50



CABINA QMT SSE - VISTA 1 - SCALA 1:50



ORDINE INGEGNERI
PROFESSIONE CAGLIARI
N. 3483 Dott. Ing. Giuseppe Frongidà

0	07/2022	Emissione	MD	GP	GP
REV.	DATE	DESCRIPTION	PREPARED	CHECKED	APPROVED
PROJECT: IMPIANTO EOLICO "TELTI" Comuni di Telti e Calangianus (OT)			EGP CODE		
FILE NAME: GRE.EEC.D.99.ITW155901600800			PLANT		
CLASSIFICATION: PUBLIC			FORMAT: A0	SCALE: varie	PLOT SCALE: 1:1
UTILIZATION SCOPE: BASIC DESIGN			SHEET: 2 di 2		
TITLE: PLANIMETRIA ELETTROMECCANICA SOTTOSTAZIONE MT-AT E SE 150 kV CONDIVISA			REVISION		
VALIDATED BY: A.Puosi (GRE)	GROUP: GRE.EEC	FUNCTION: D.99	TYPE: ITW155901600800	COUNTRY: IT	PLANT: 1
VERIFIED BY:	GROUP: GRE.EEC	FUNCTION: D.99	TYPE: ITW155901600800	COUNTRY: IT	PLANT: 1
COLLABORATORS:	GROUP: GRE.EEC	FUNCTION: D.99	TYPE: ITW155901600800	COUNTRY: IT	PLANT: 1