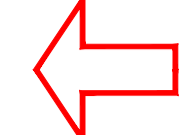














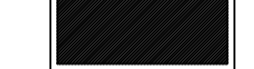
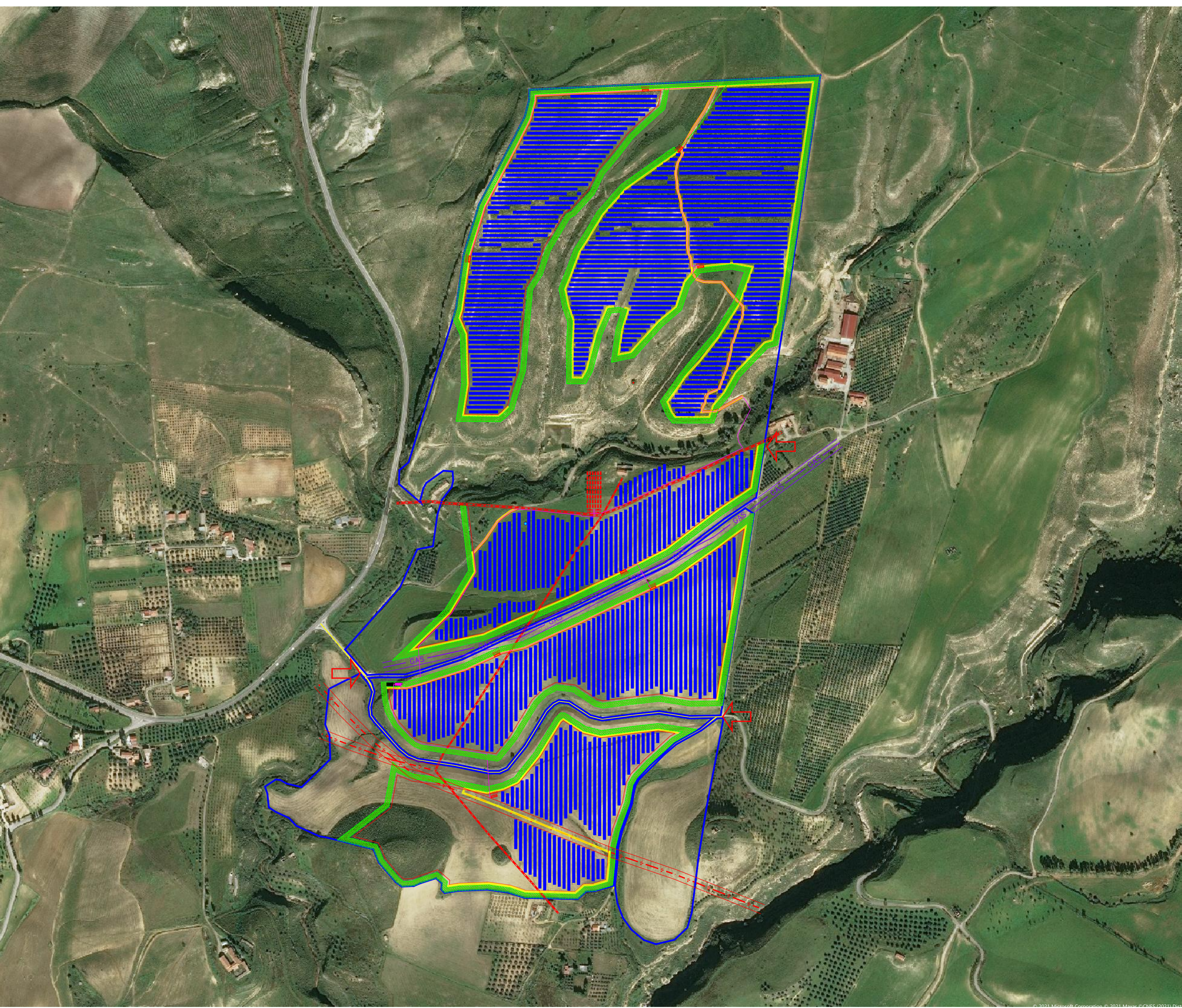
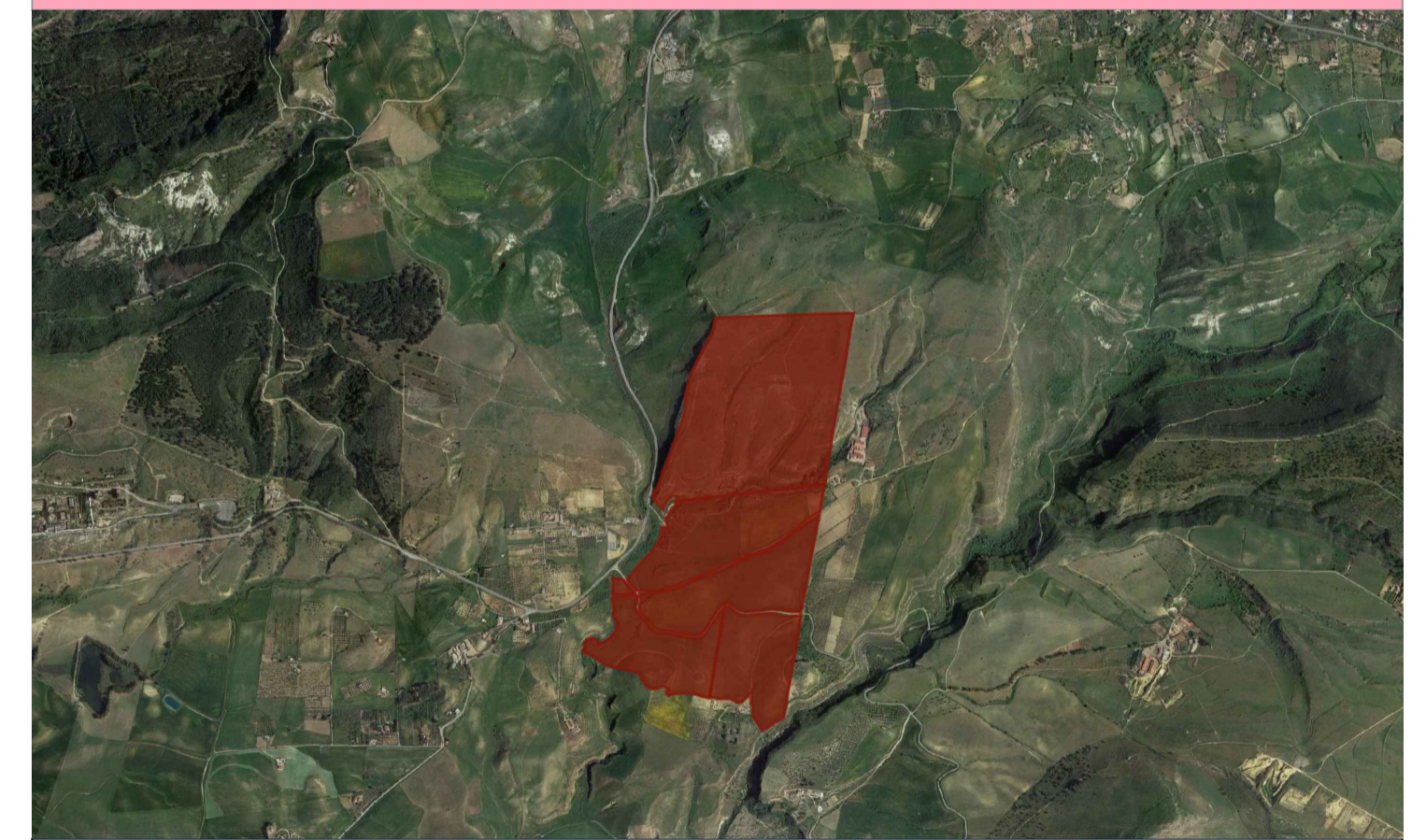



# Legenda

-  Ingresso
-  Power Station
-  Cabina di raccolta
-  Cavidotto MT interrato interno
-  Linea elettrica esistente
-  Metanodotto esistente
-  Fascia arborea 10 m
-  Fascia tagliafuoco 5 m
-  Strade interne
-  Strutture fisse 3x4
-  Tracker monoassiale 2x15
-  Tracker monoassiale 2x30
-  Pozzo esistente di cui non si ha documentazione attestante la regolarità
-  N. 48 container batteria da 2,3 MWh
-  Container n.2 inverters + trasformatore
-  Control room



## Provincia di ENNA - Comune di ENNA



DATA	REV	OGGETTO REVISIONE
Committente:		Sviluppo e Progettazione esecutiva:
X-ELIO		
X-ELIO ENNA 2 S.R.L. Corso Vittorio Emanuele II,349 00186 Roma P.IVA:17129771006 www.x-elio.com		GEOSTUDIOGROUP STP S.r.l. Via Dott. Lino Blundo n.3 97100 Ragusa (RG) P.IVA:01635940883 www.geostudiogroup.net
OPERA:		TITOLO: Layout impianto FV su Ortofoto
Progetto per la realizzazione di un impiantoagrivoltaco denominato "ENNA 2" della potenza di 42 MW in A.C. e 50 MWp in D.C. con sistema di accumulo integrato da 21 MW e di tutte le opere connesse ed infrastrutture da realizzarsi nel Comune di Enna (EN).		Progettista Ing. Salvatore Camillieri
UBICAZIONE IMPIANTO		
Contrada Salsello Enna (EN)		
DATA:	SCALA:	
08/08/2023	1:4.000	