

Regione Veneto



Provincia di Padova



Comune di Este



PROGETTO DEFINITIVO

PROGETTO DEFINITIVO PER LA REALIZZAZIONE DI UN IMPIANTO AGRIVOLTAICO DELLA POTENZA DI PICCO PARI A 36.083,52 kWp UBICATO NEL COMUNE DI ESTE (PD) E DELLE RELATIVE OPERE DI CONNESSIONE ALLA RTN

TITOLO

Schemi elettrici unifilari impianto lato cc

PROGETTAZIONE

PROPONENTE



SR International S.r.l.
C.so Vittorio Emanuele II, 282-284 - 00186 Roma
Tel. 06 8079555 - Fax 06 80693106
C.F e P.IVA 13457211004



Ing. Andrea Bartolazzi



K2 Solar S.r.l.
C.so Vittorio Emanuele II, 282-284 - 00186 Roma
PEC mail@pec.k2solar.it
C.F e P.IVA 16890601004

Revisione	Data	Elaborato	Verificato	Approvato	Descrizione
00	11/01/2024	Fabio Lauretti	Ing. Bartolazzi	K2 Solar S.r.l.	Schema elettrico unifilare lato cc

Codice Elaborato

K2S-EST-IE.01

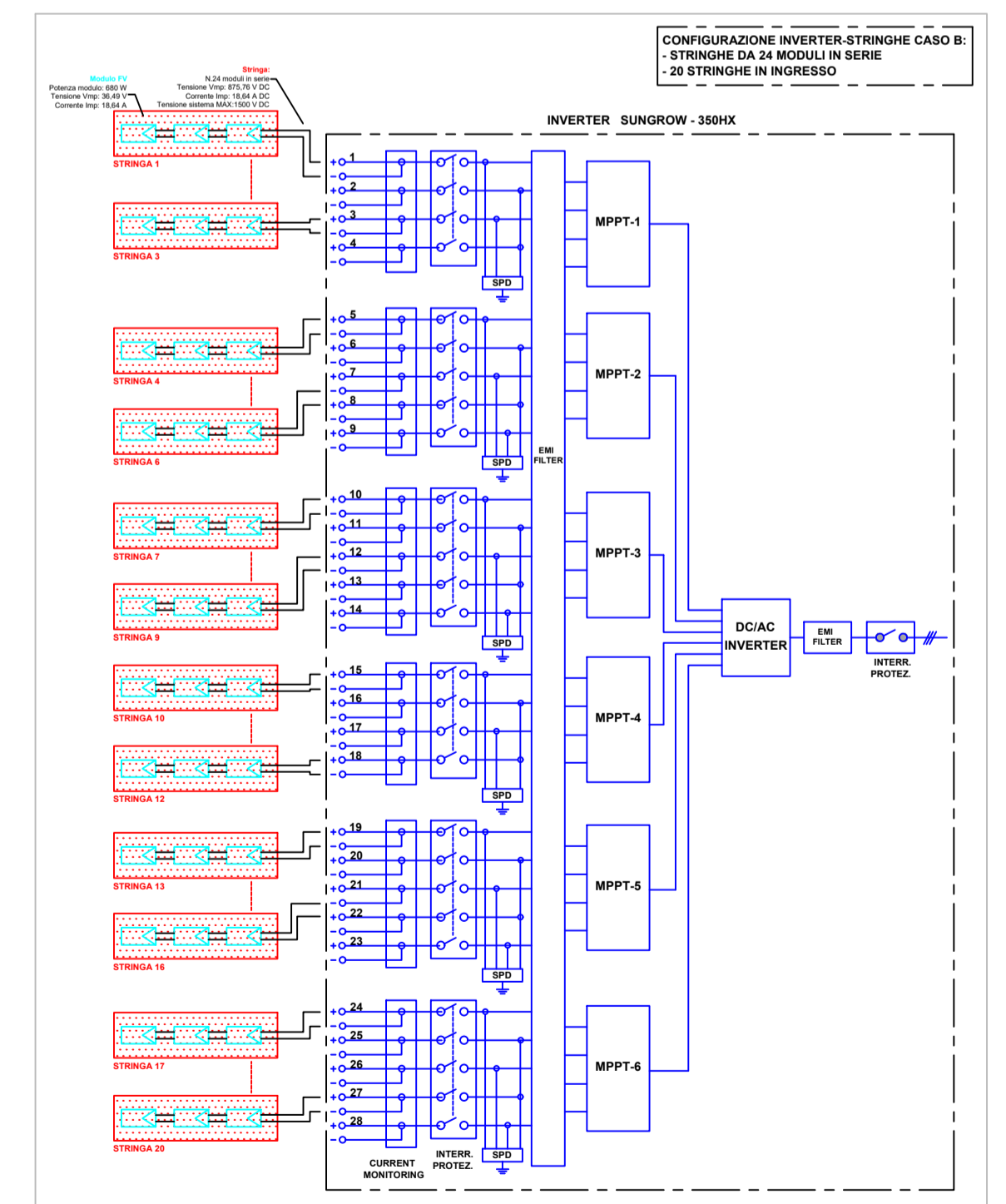
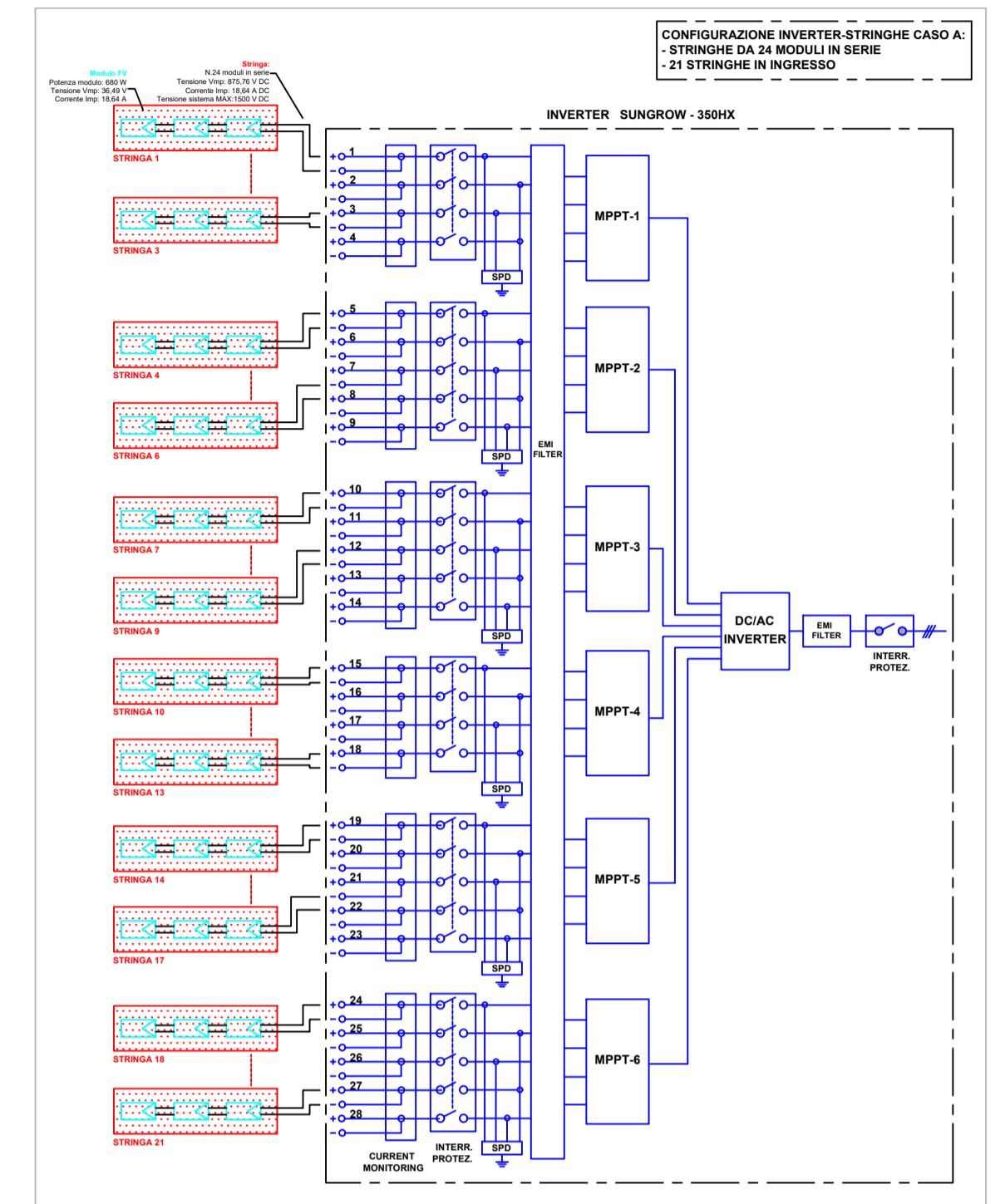
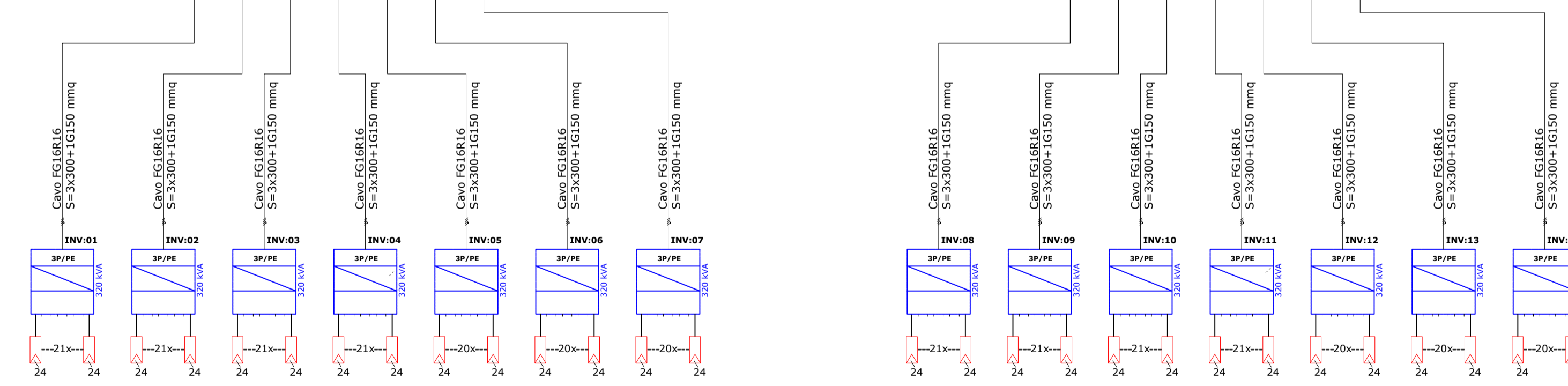
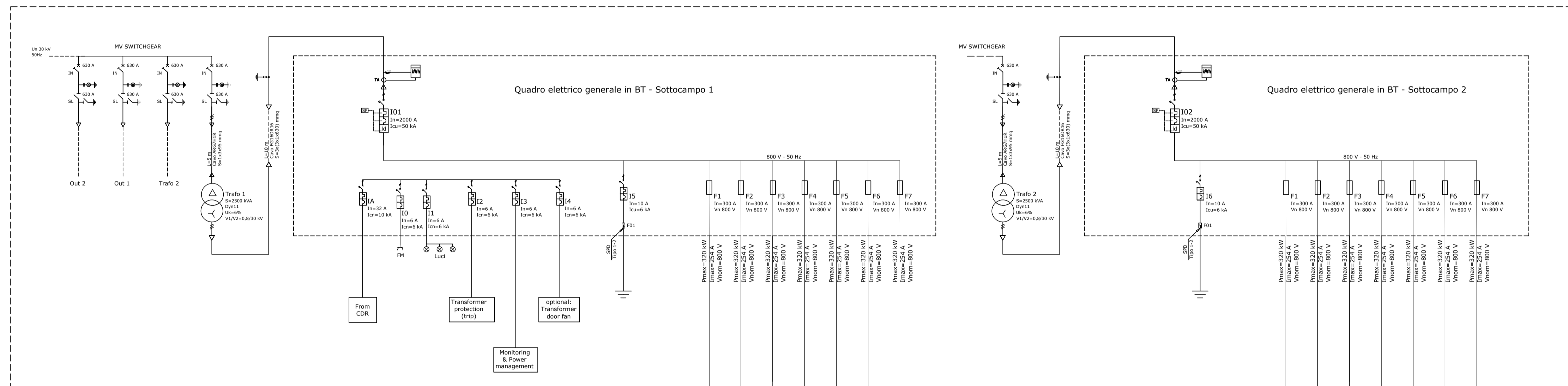
Scala

-

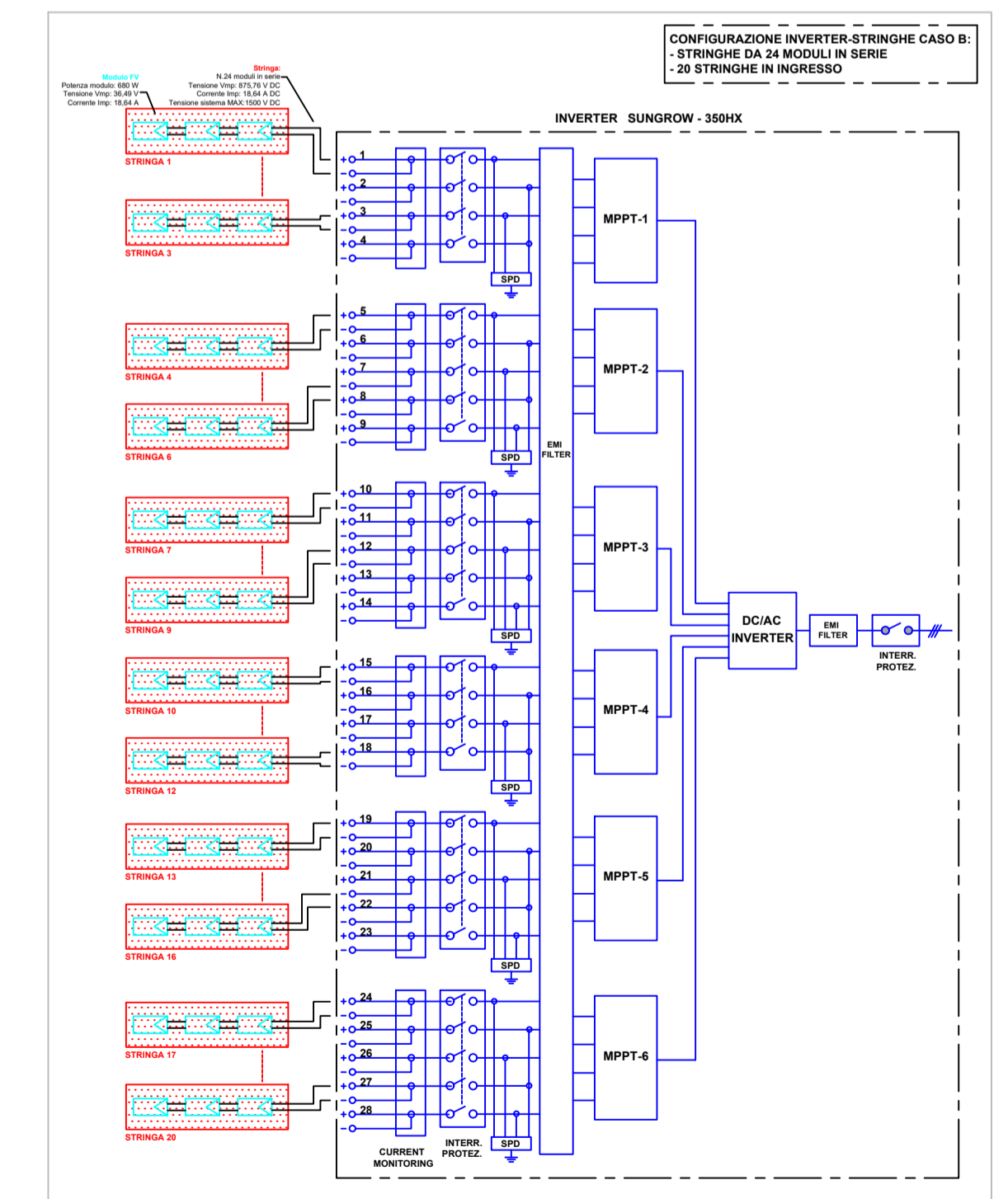
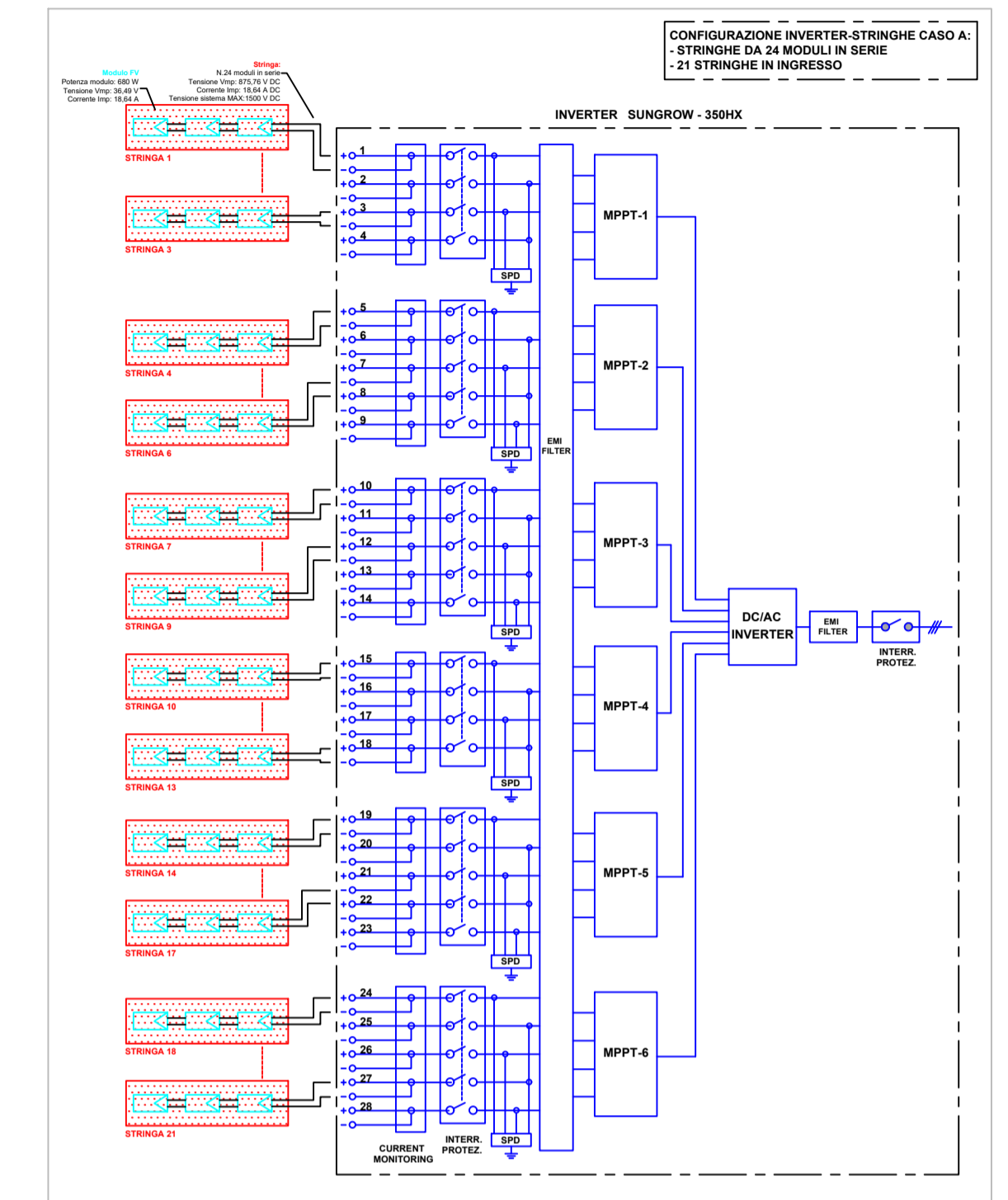
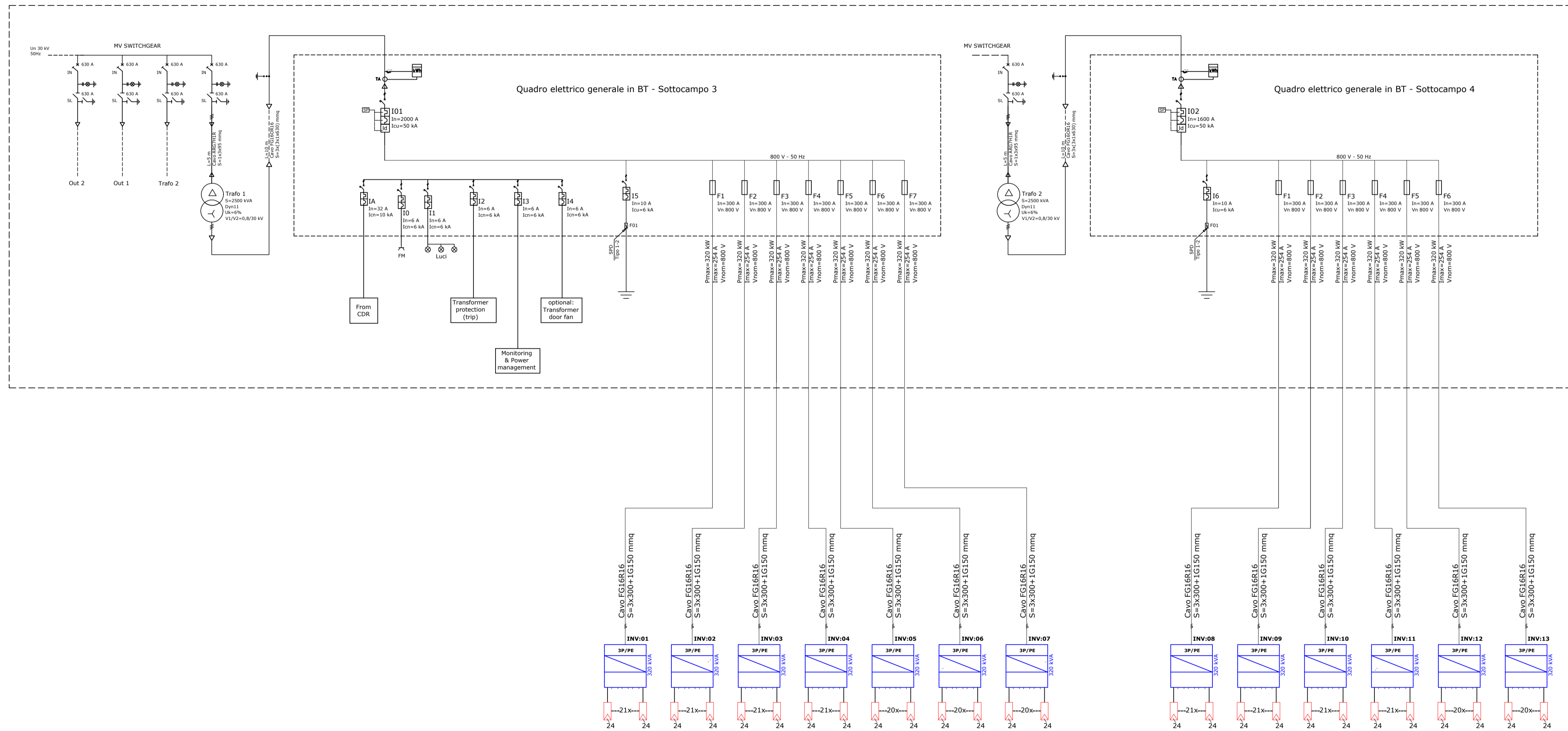
Formato

A4

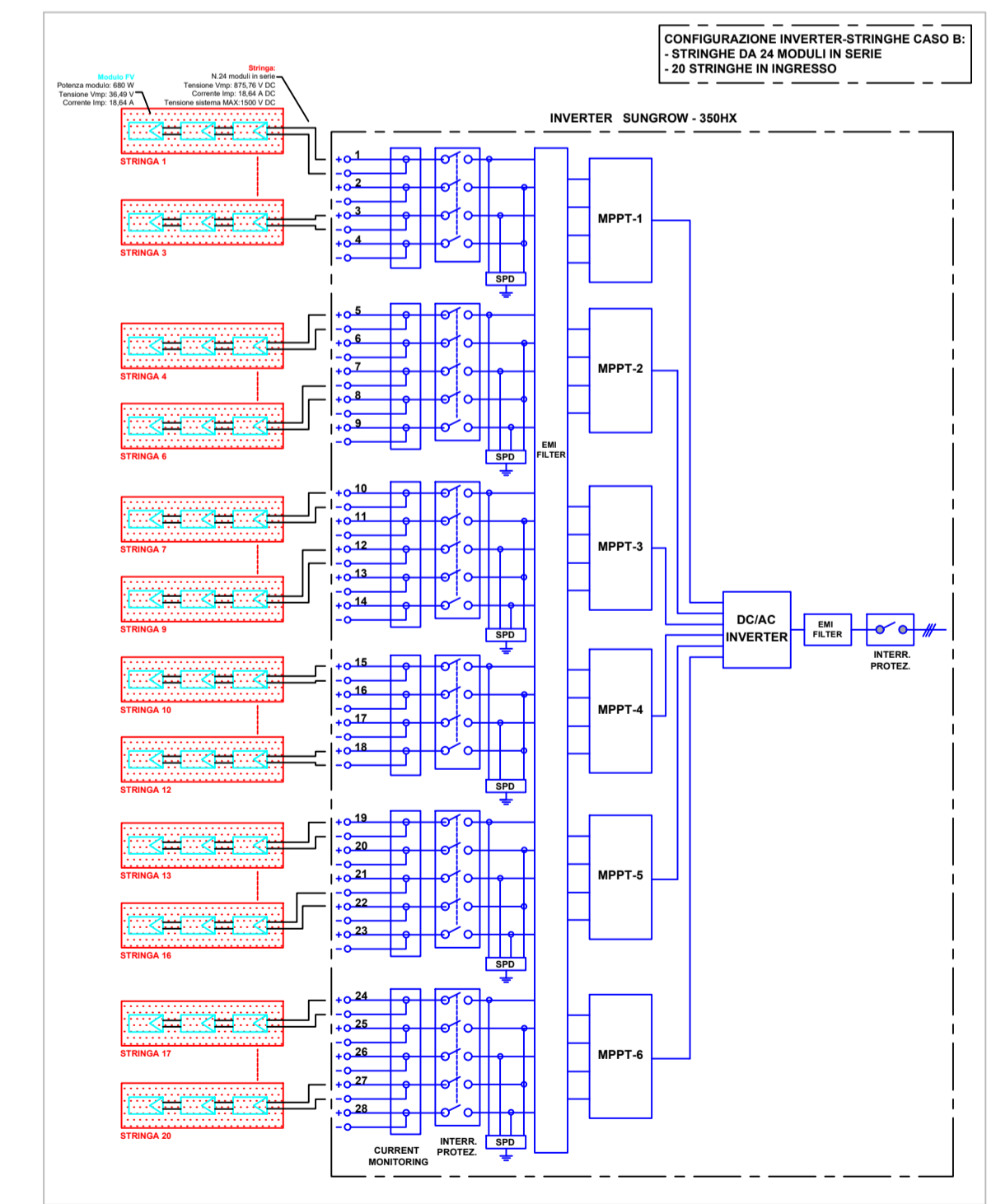
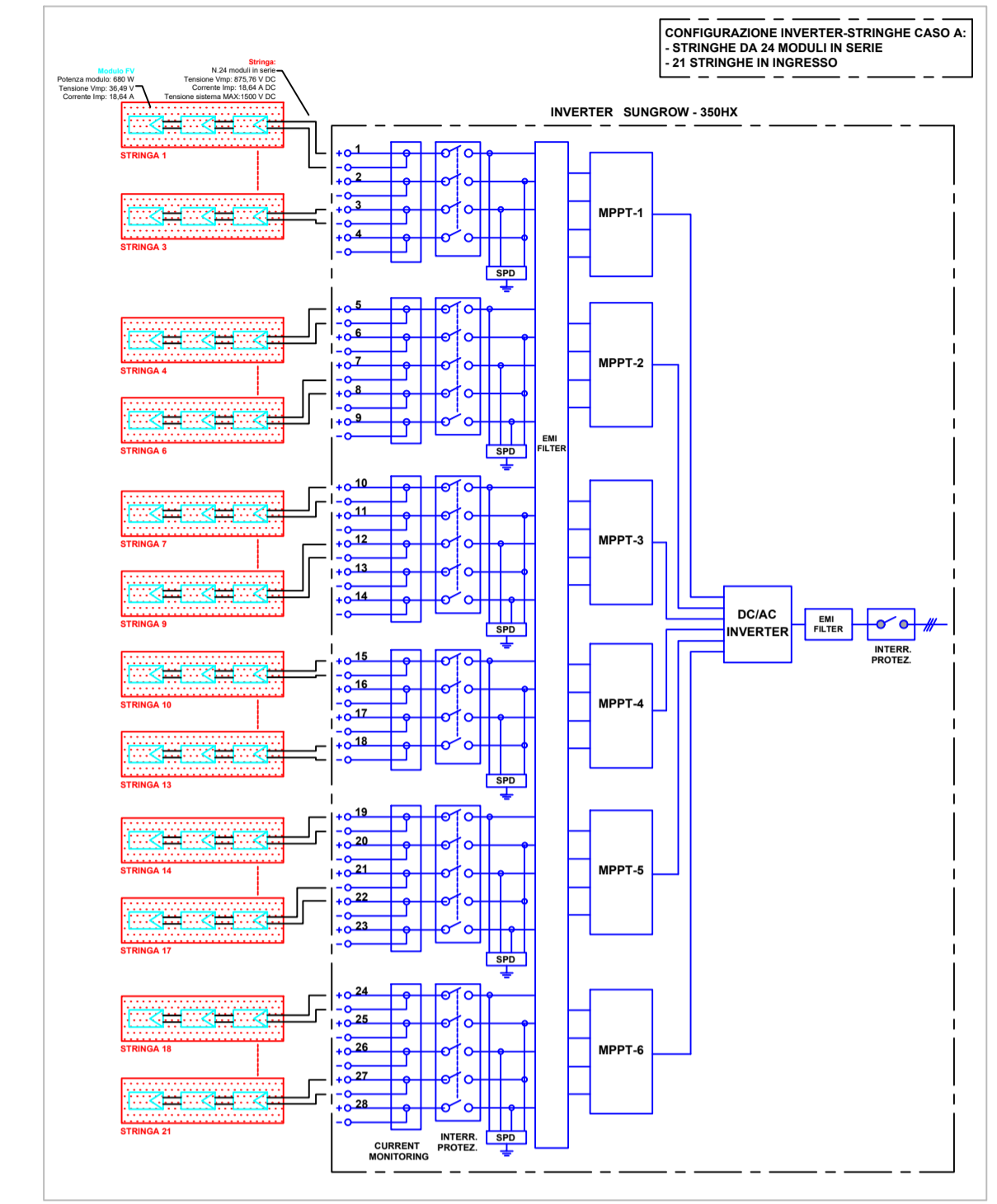
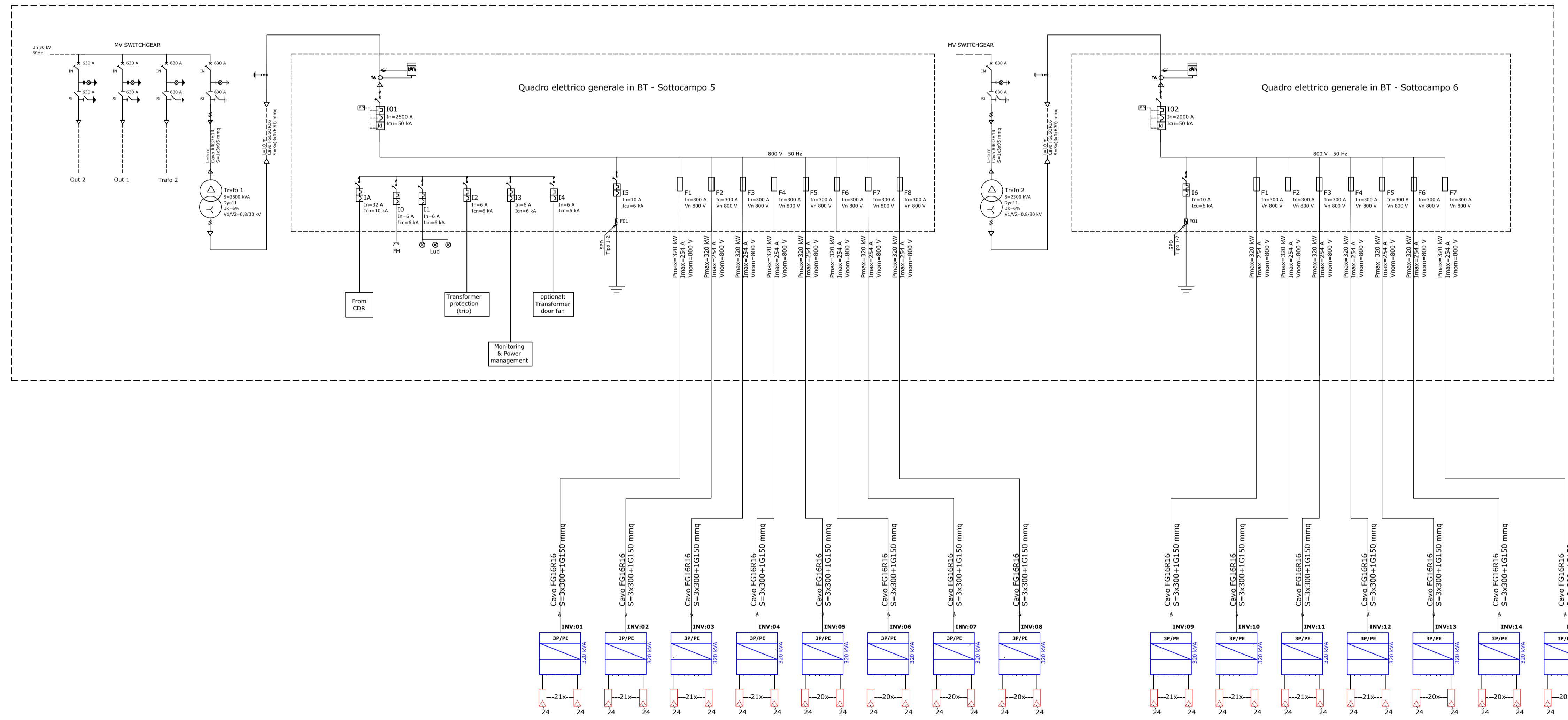
SCHEMA UNIFILARE DI COLLEGAMENTO INVERTER/QUADRO BT IN CABINA DI TRASFORMAZIONE CT.1.1



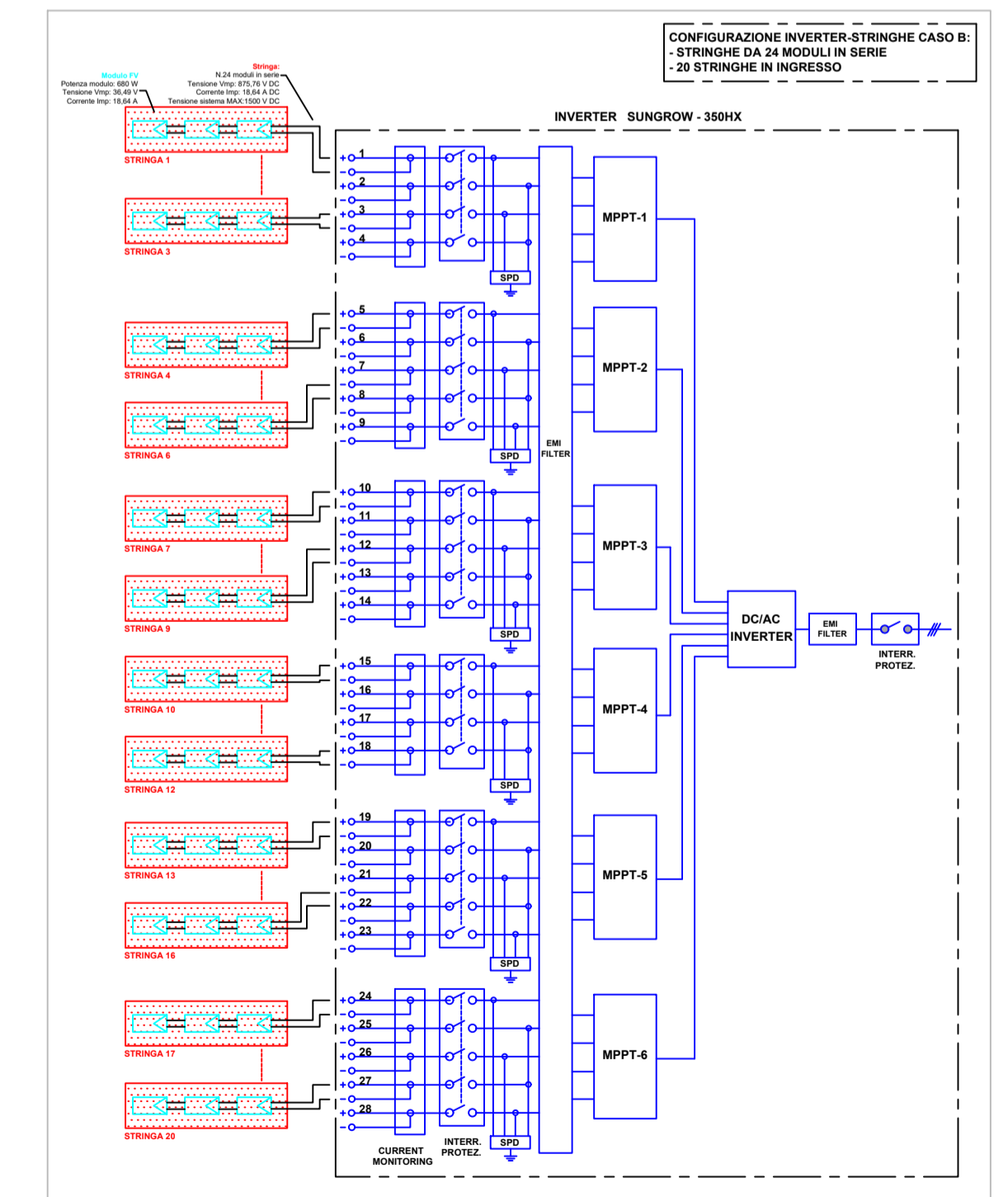
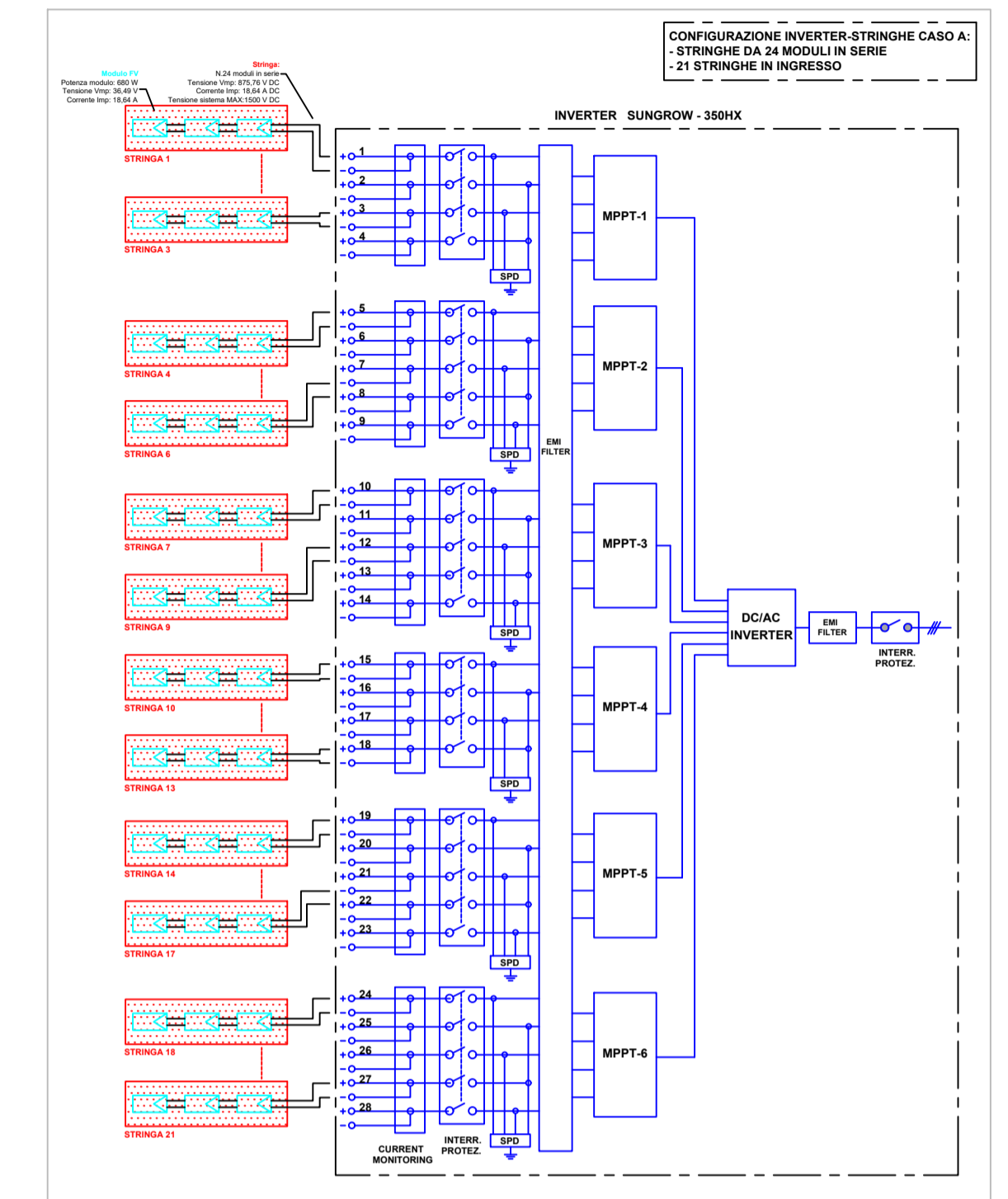
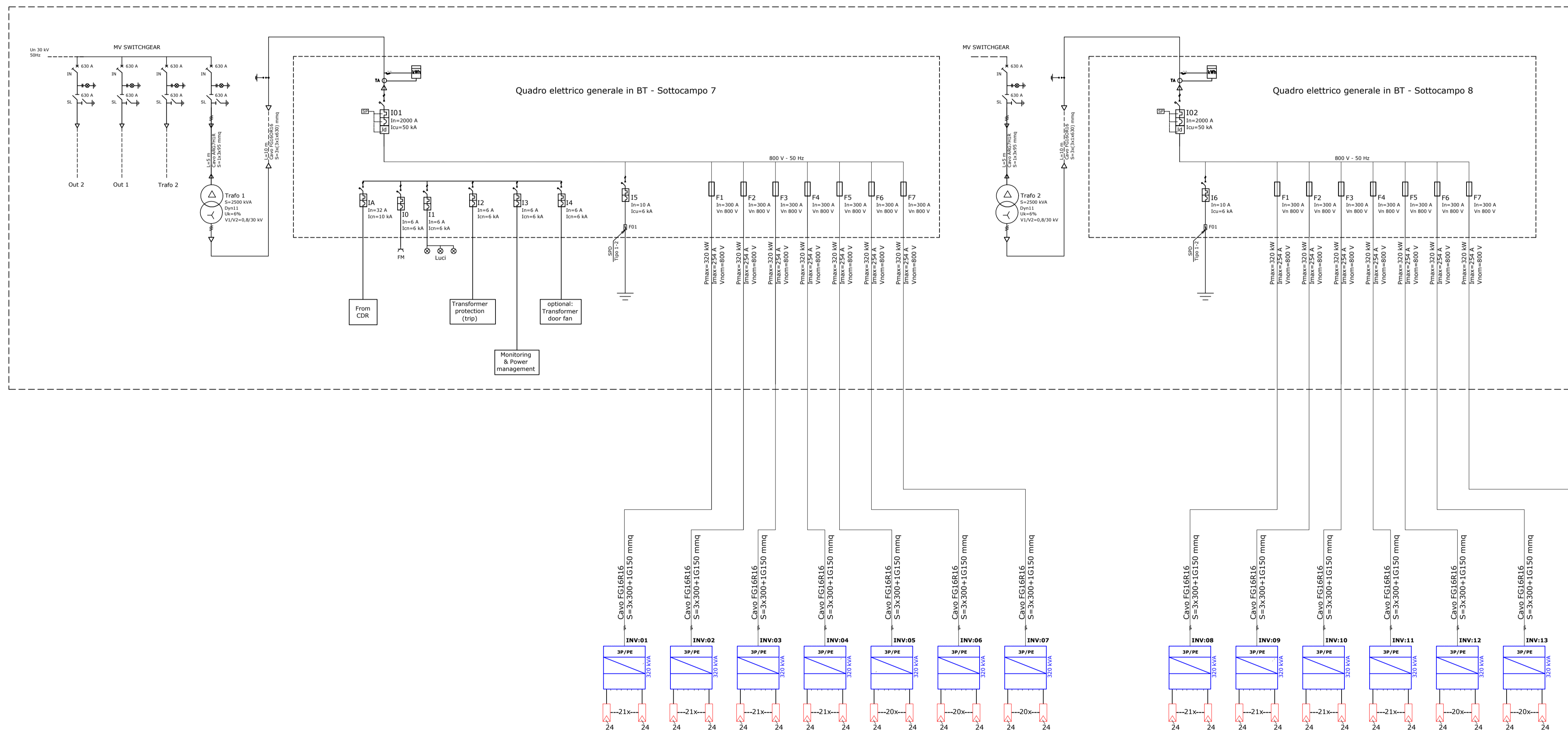
SCHEMA UNIFILARE DI COLLEGAMENTO INVERTER/QUADRO BT IN CABINA DI TRASFORMAZIONE CT.1.2



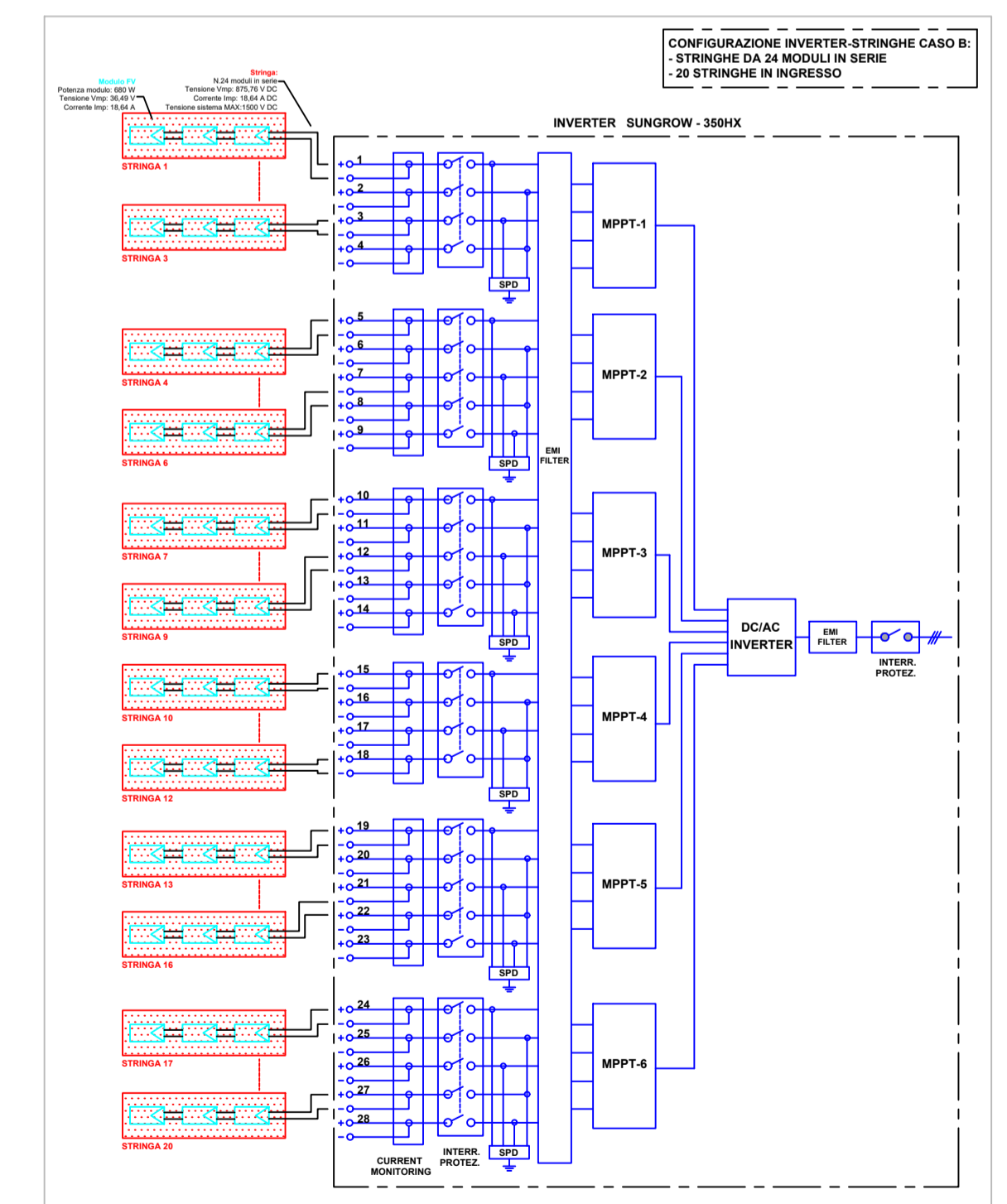
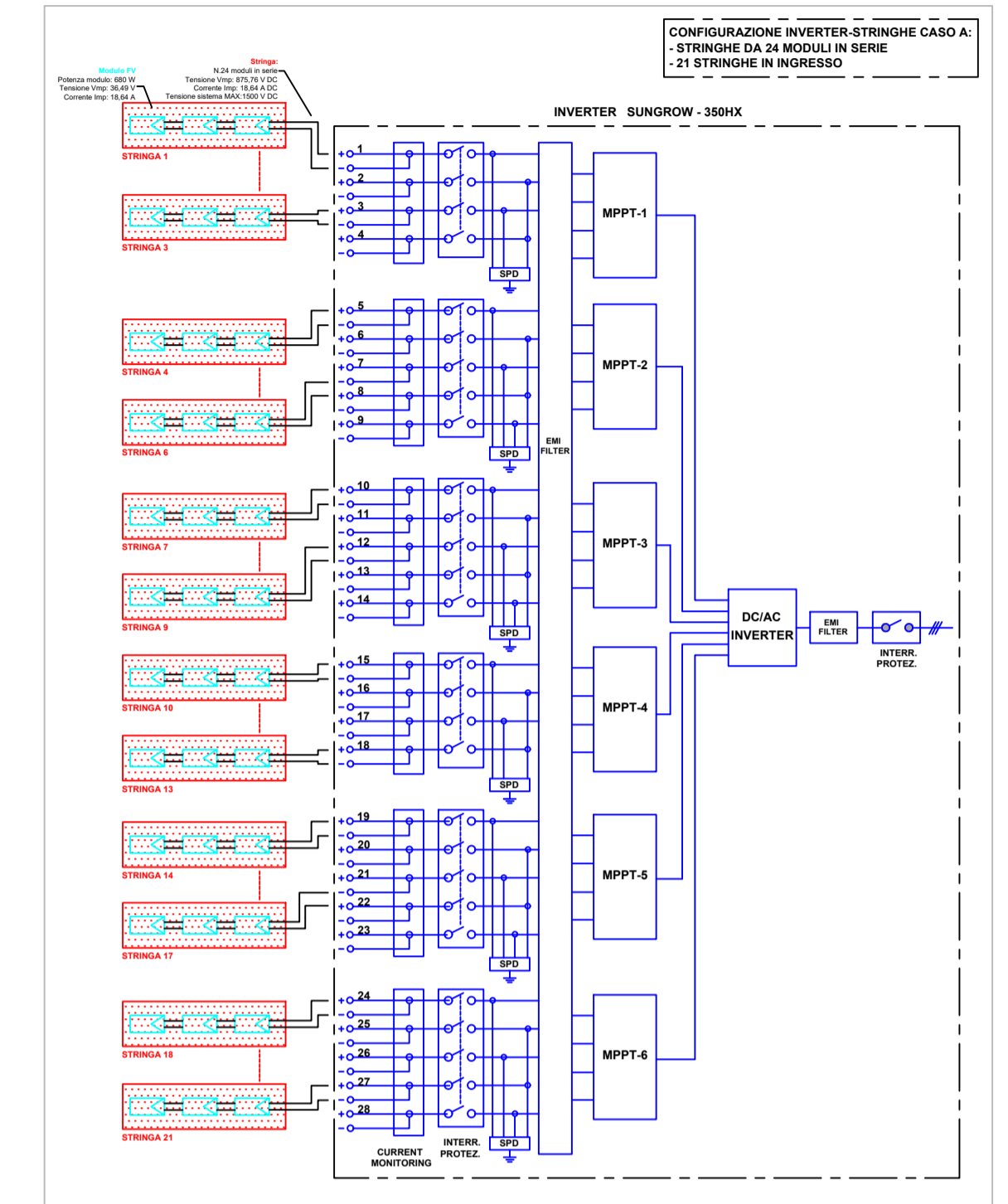
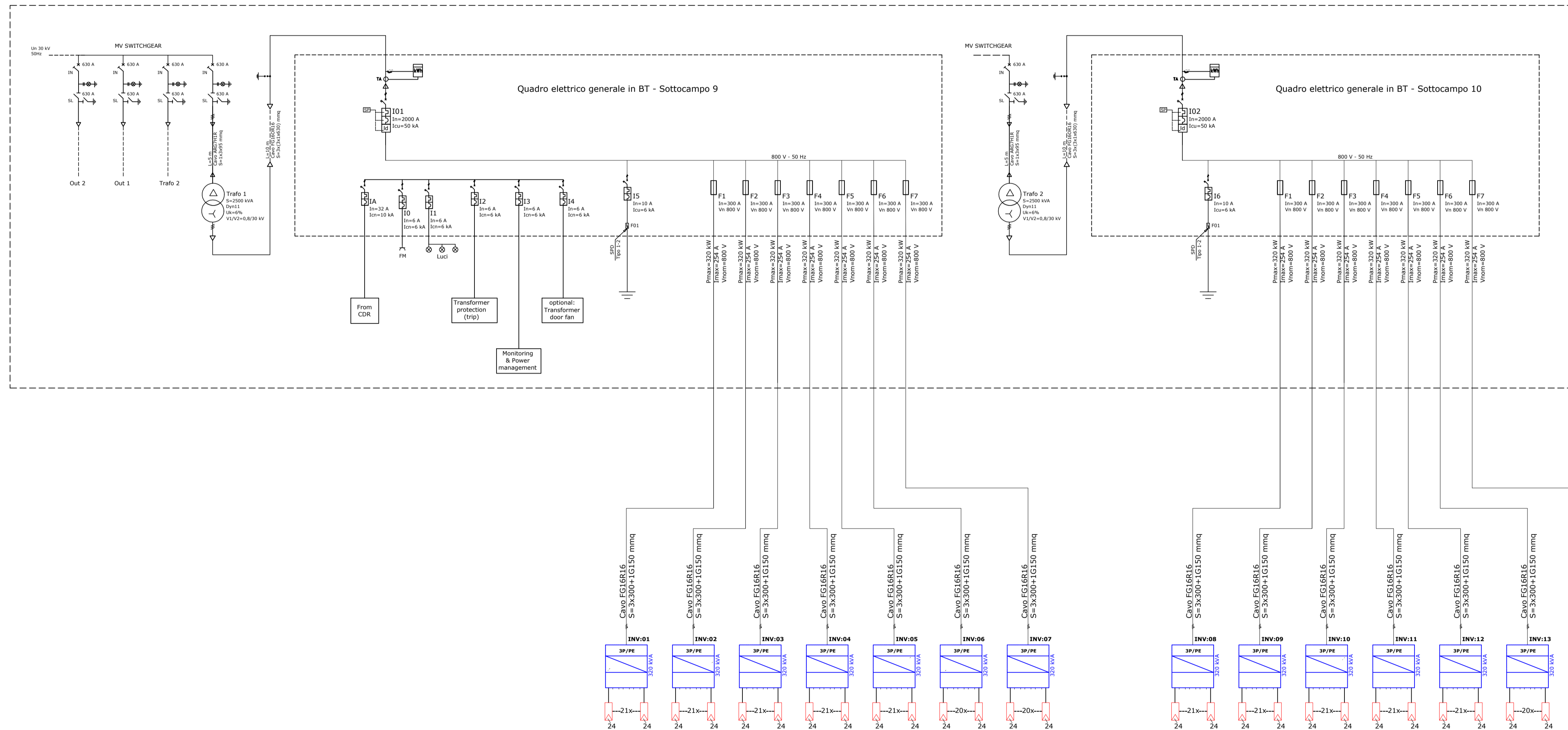
SCHEMA UNIFILARE DI COLLEGAMENTO INVERTER/QUADRO BT IN CABINA DI TRASFORMAZIONE CT.2.1



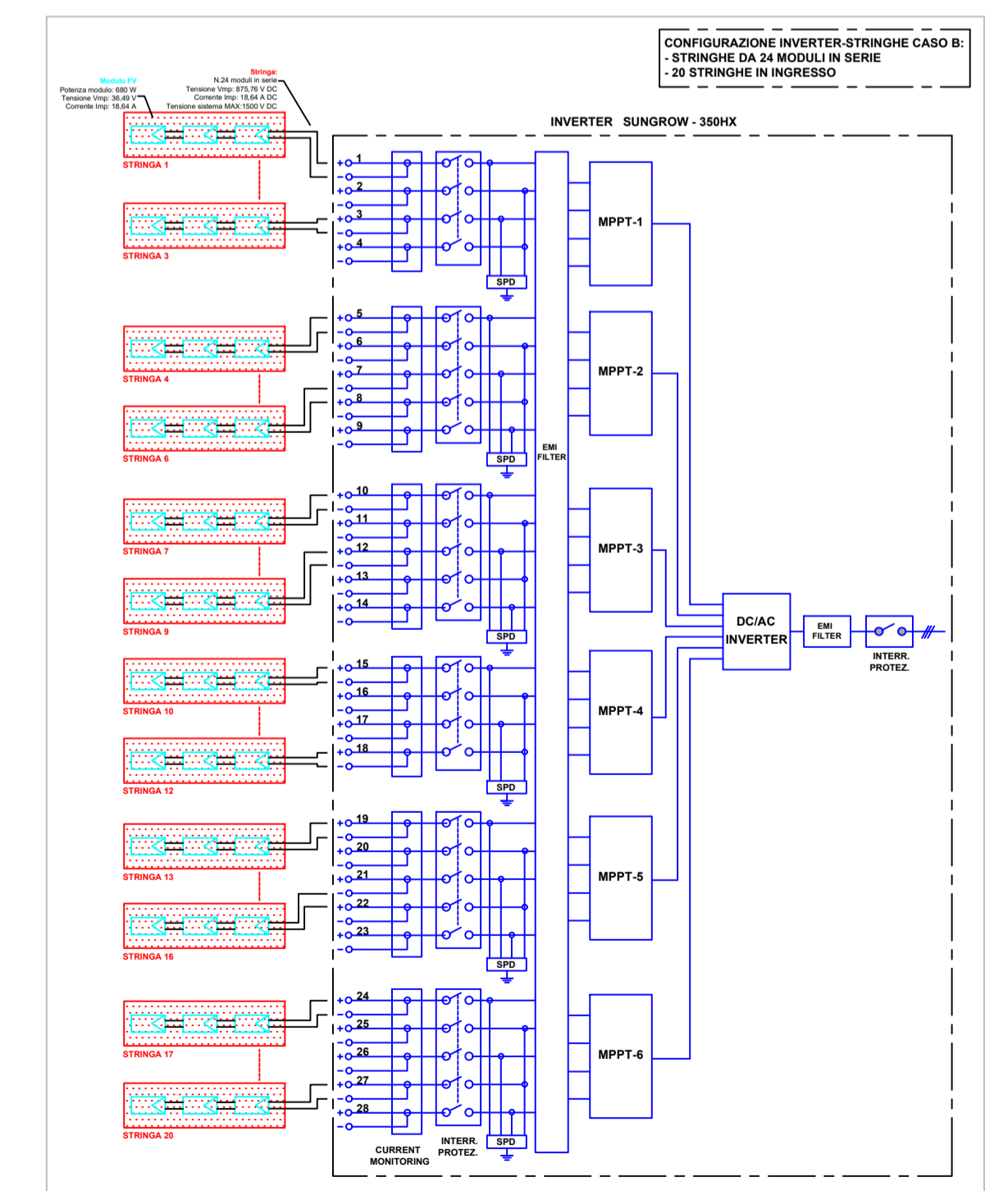
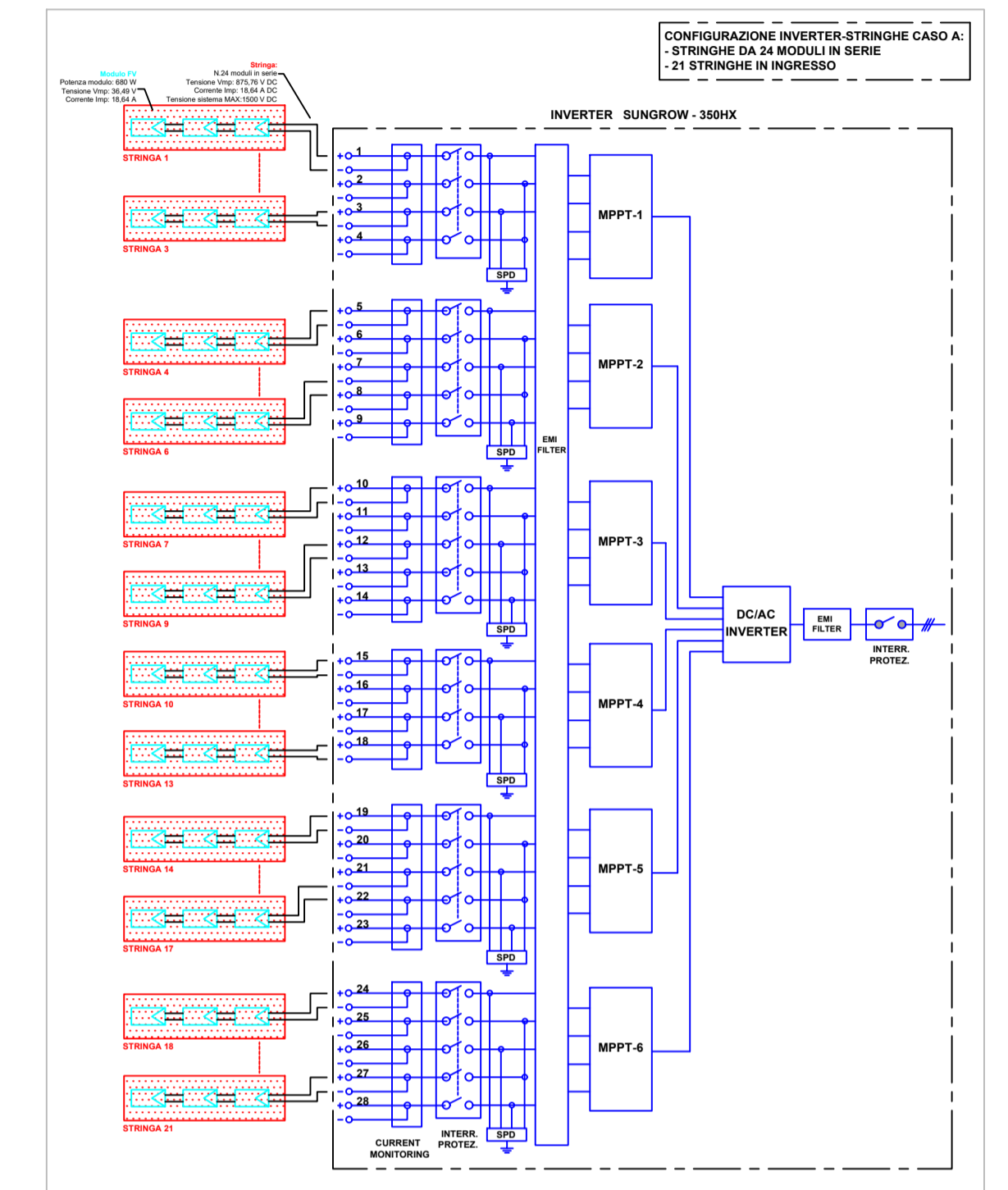
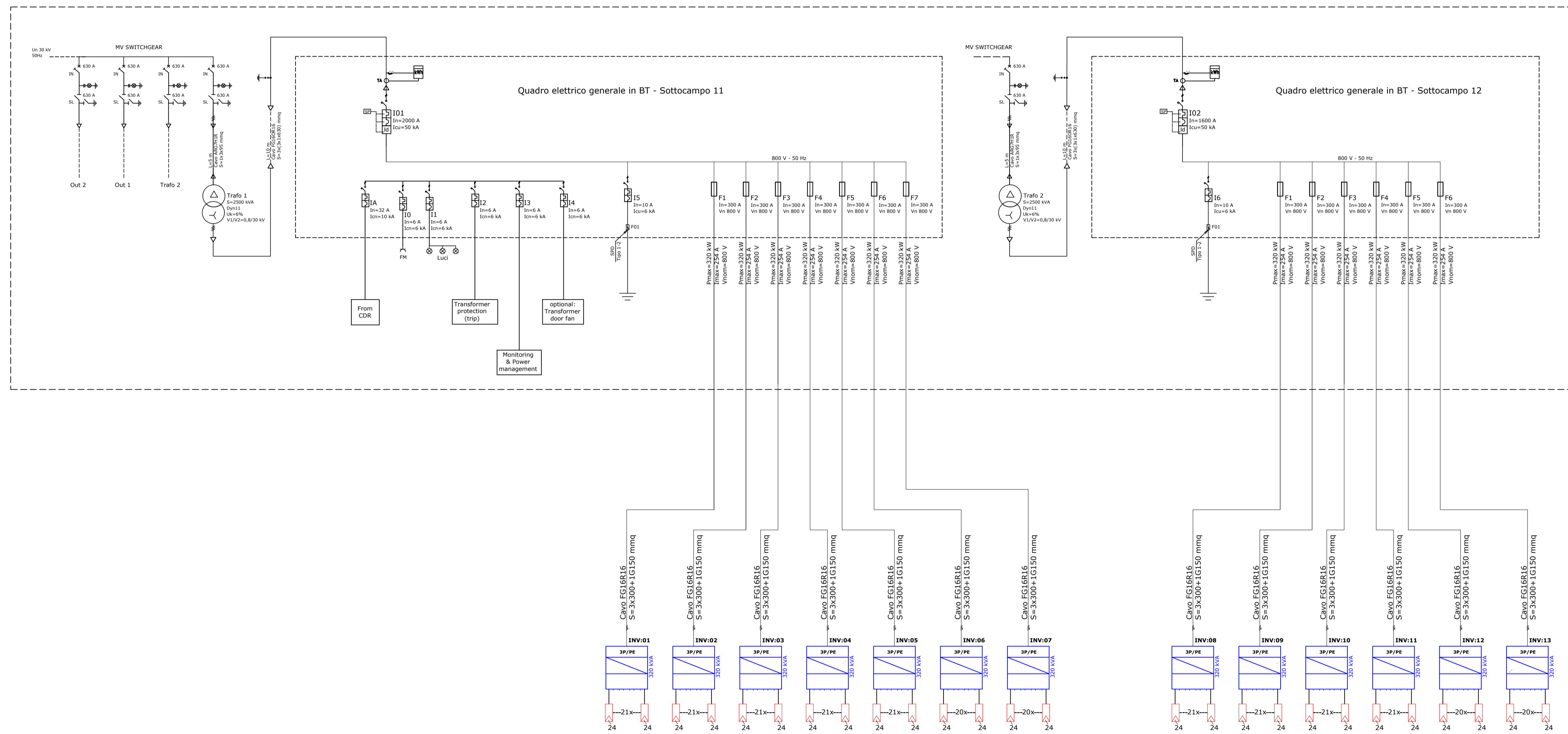
SCHEMA UNIFILARE DI COLLEGAMENTO INVERTER/QUADRO BT IN CABINA DI TRASFORMAZIONE CT2.2



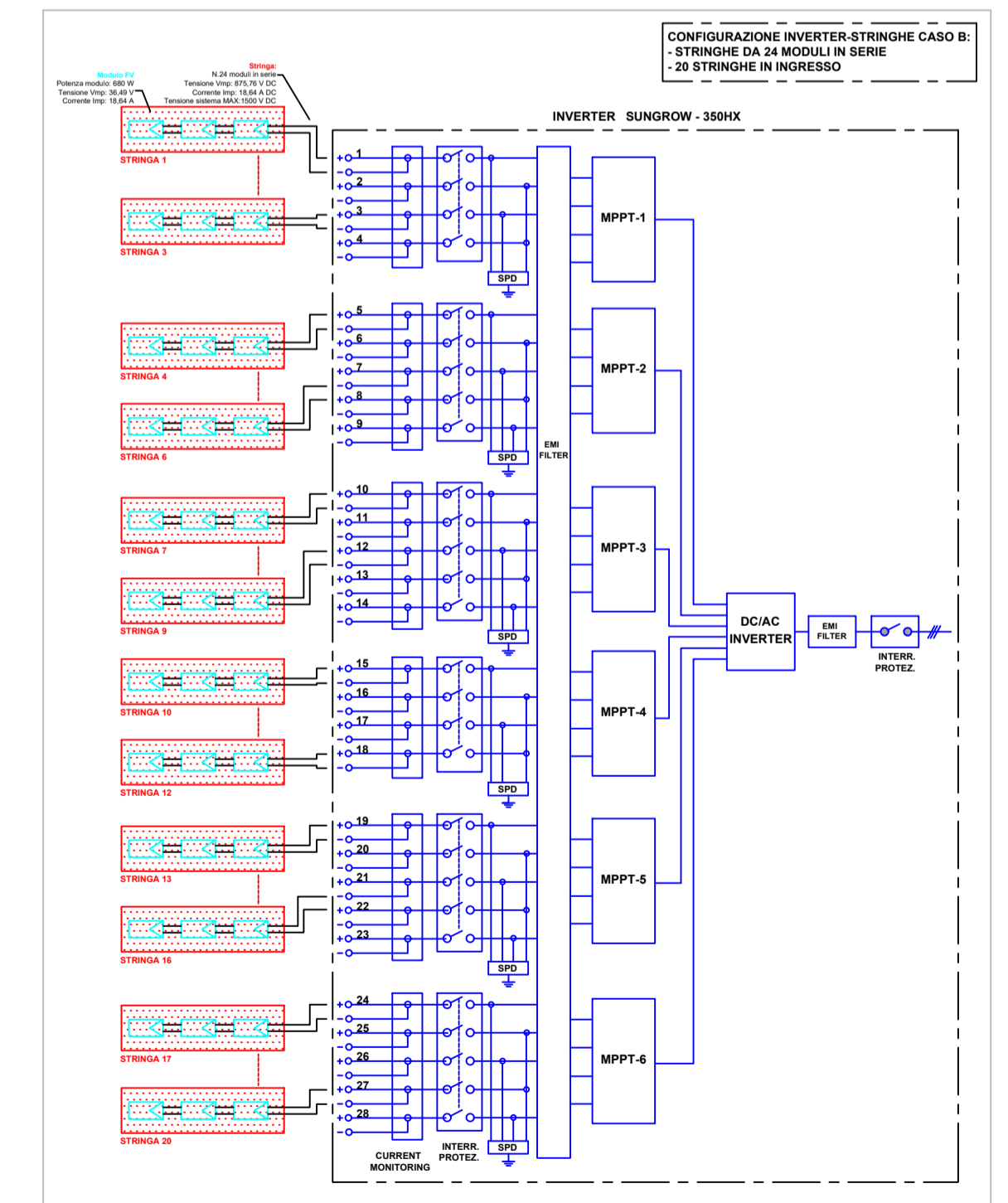
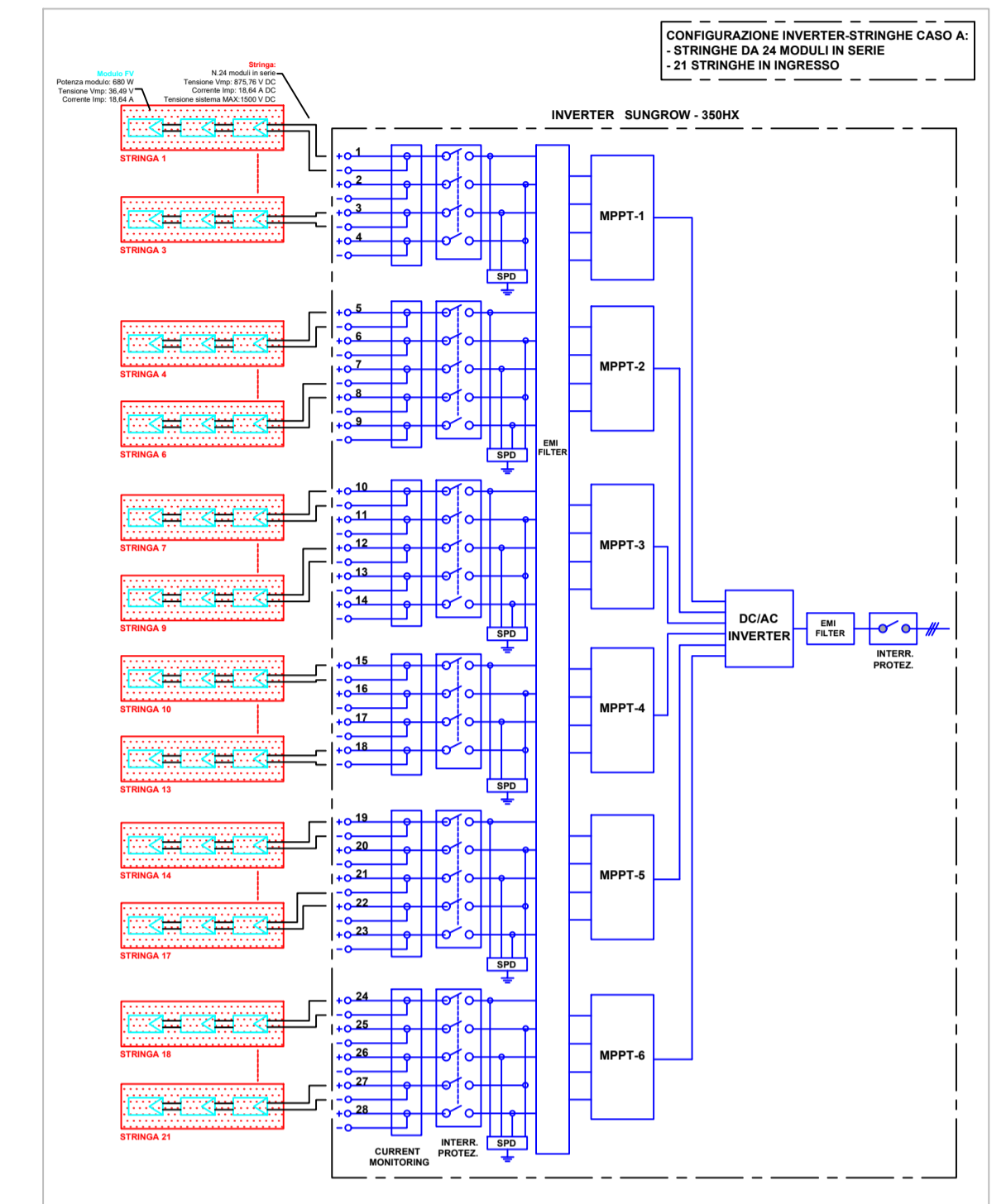
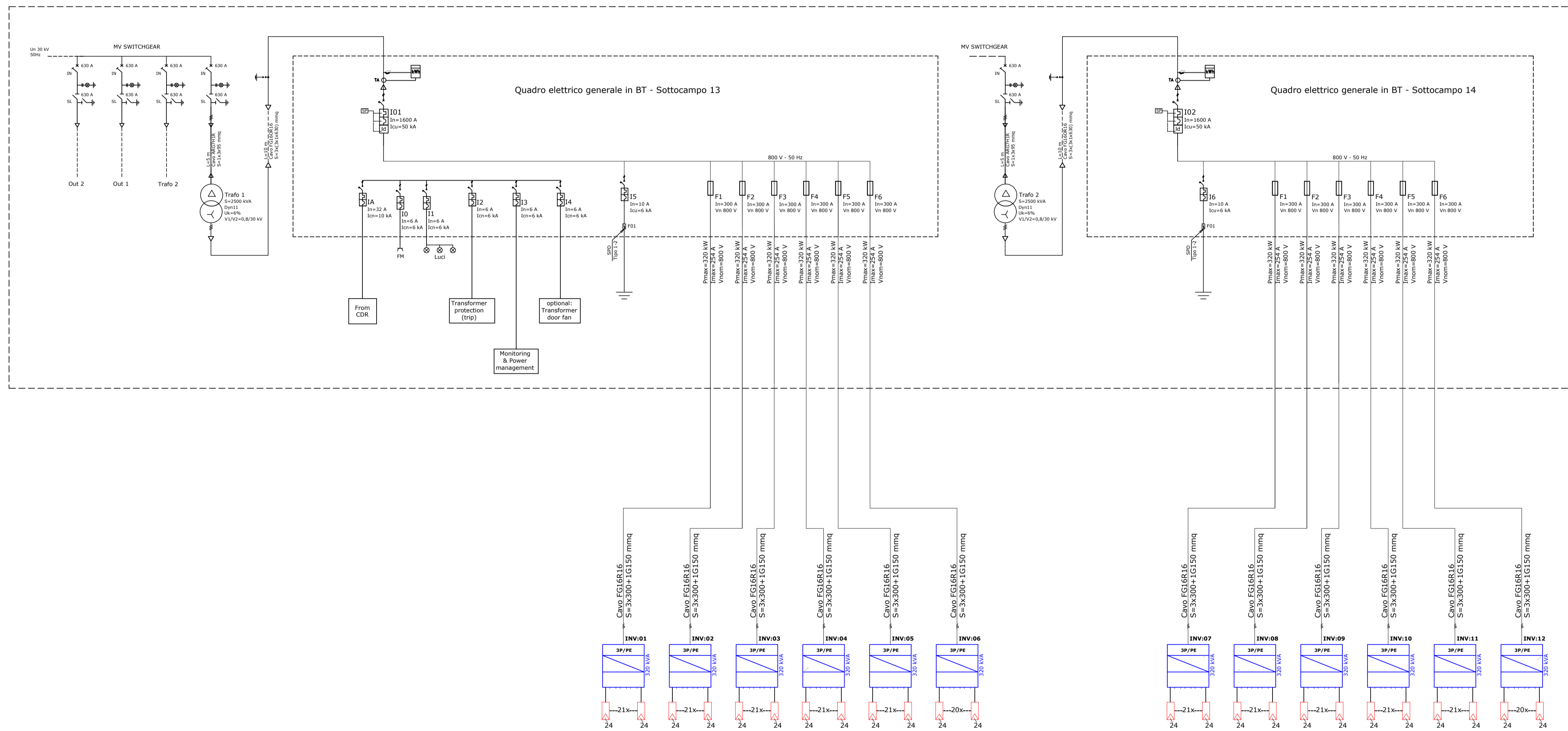
SCHEMA UNIFILARE DI COLLEGAMENTO INVERTER/QUADRO BT IN CABINA DI TRASFORMAZIONE CT3.1



SCHEMA UNIFILARE DI COLLEGAMENTO INVERTER/QUADRO BT IN CABINA DI TRASFORMAZIONE CT.3.2



SCHEMA UNIFILARE DI COLLEGAMENTO INVERTER/QUADRO BT IN CABINA DI TRASFORMAZIONE CT.4.1



SCHEMA UNIFILARE DI COLLEGAMENTO INVERTER/QUADRO BT IN CABINA DI TRASFORMAZIONE CT4.2

