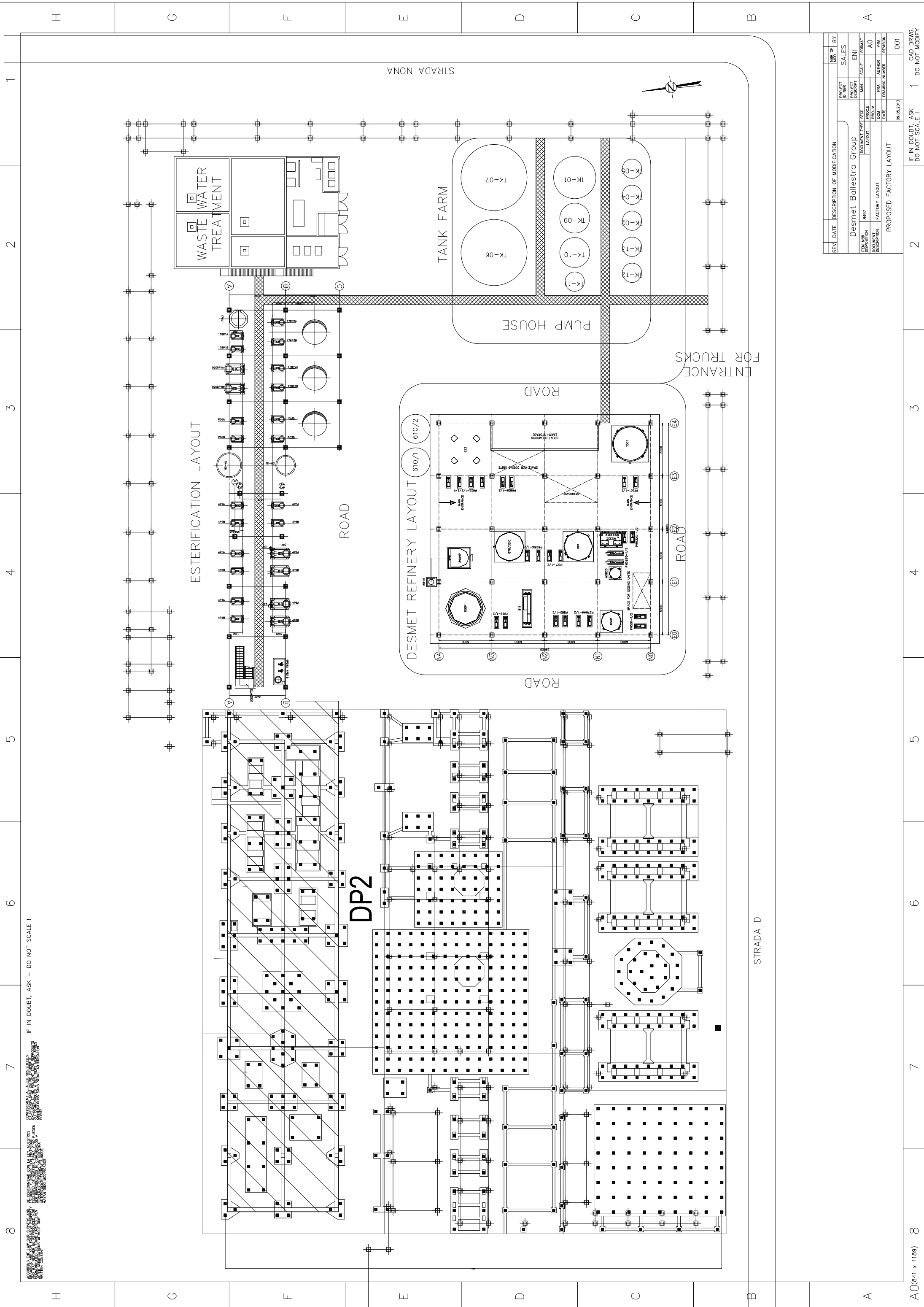


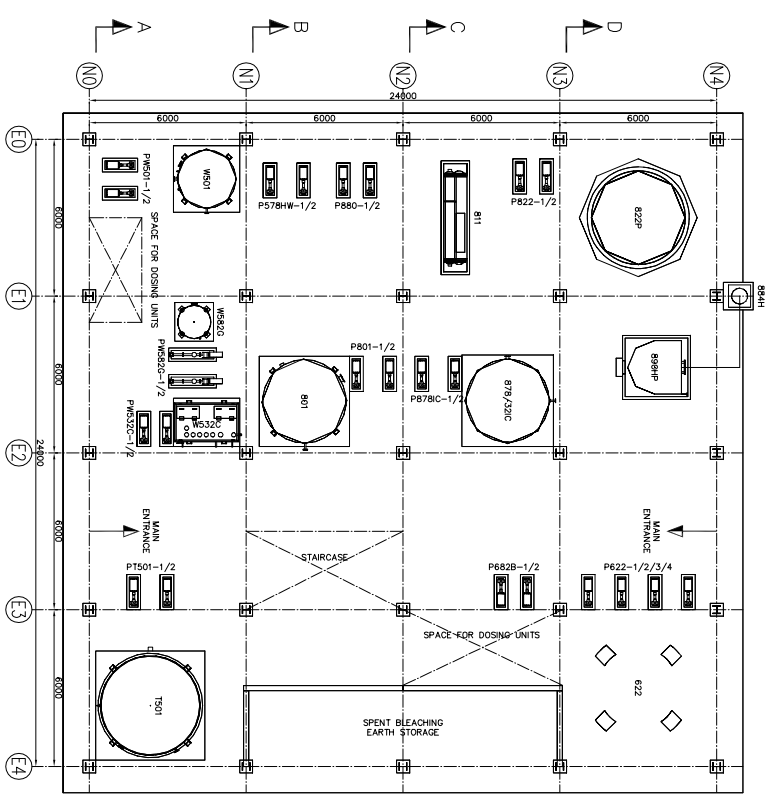


IF IN DOUBT, ASK - DO NOT SCALE !

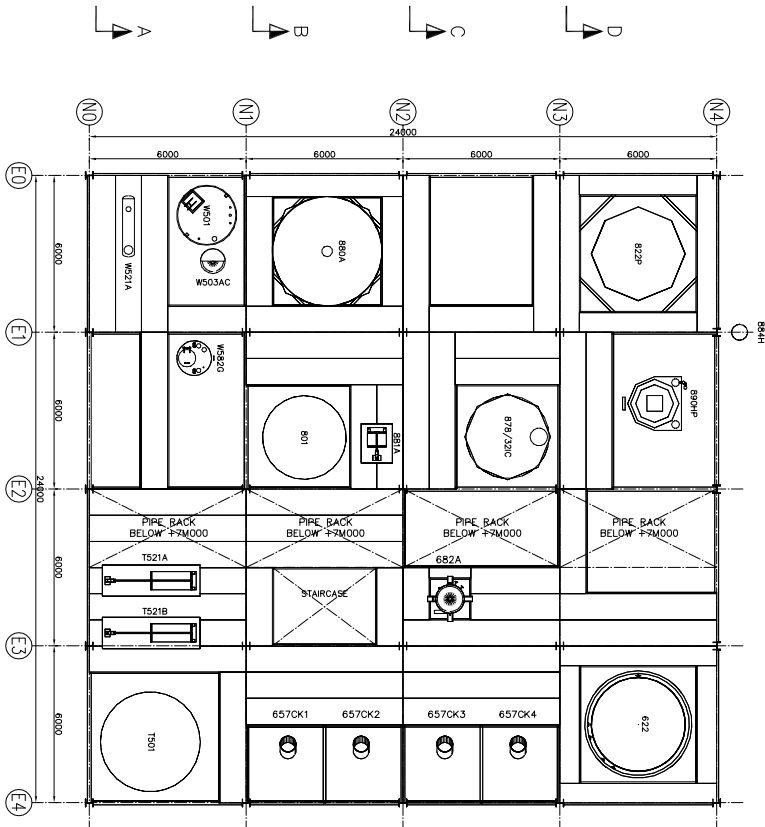


REV.	DATE	DESCRIPTION OF MODIFICATION	NO. OF SALES	BY																								
<table border="1"> <tr> <td>PROJECT ID</td> <td>8497</td> <td>PROJECT NAME</td> <td>Desmet Ballestra Group</td> </tr> <tr> <td>DOCUMENT TYPE</td> <td>LAYOUT</td> <td>SCALE</td> <td>ENI</td> </tr> <tr> <td>ITEM NO.</td> <td></td> <td>DOCUMENT TYPE</td> <td>ENI</td> </tr> <tr> <td>DISPOSITION</td> <td></td> <td>SCALE</td> <td>AO</td> </tr> <tr> <td>PROGRAM</td> <td></td> <td>DATE</td> <td></td> </tr> <tr> <td>REVISION</td> <td></td> <td>REASON</td> <td></td> </tr> </table>					PROJECT ID	8497	PROJECT NAME	Desmet Ballestra Group	DOCUMENT TYPE	LAYOUT	SCALE	ENI	ITEM NO.		DOCUMENT TYPE	ENI	DISPOSITION		SCALE	AO	PROGRAM		DATE		REVISION		REASON	
PROJECT ID	8497	PROJECT NAME	Desmet Ballestra Group																									
DOCUMENT TYPE	LAYOUT	SCALE	ENI																									
ITEM NO.		DOCUMENT TYPE	ENI																									
DISPOSITION		SCALE	AO																									
PROGRAM		DATE																										
REVISION		REASON																										
PROPOSED FACTORY LAYOUT				001																								
				09.05.2013																								

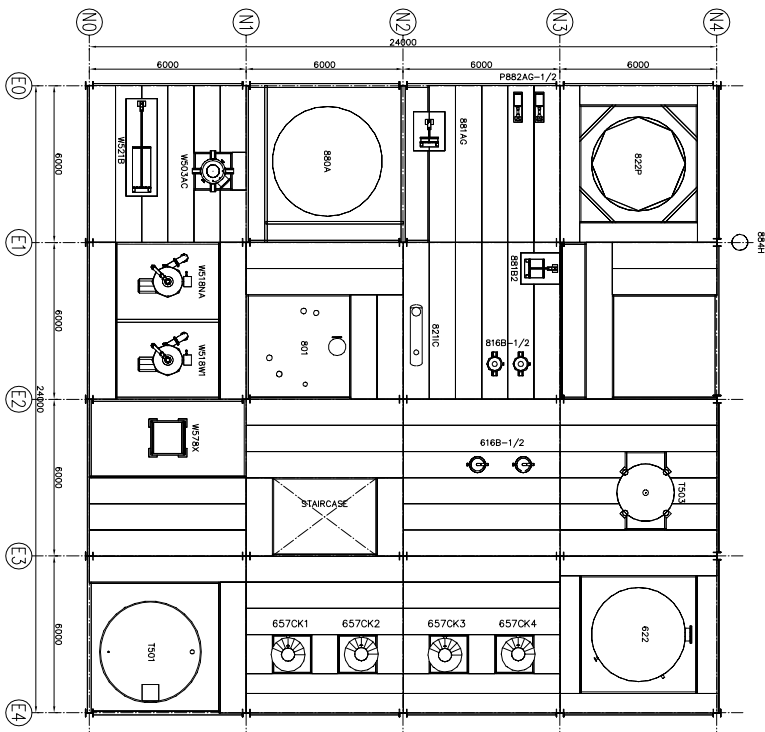
IF IN DOUBT, ASK - DO NOT SCALE !



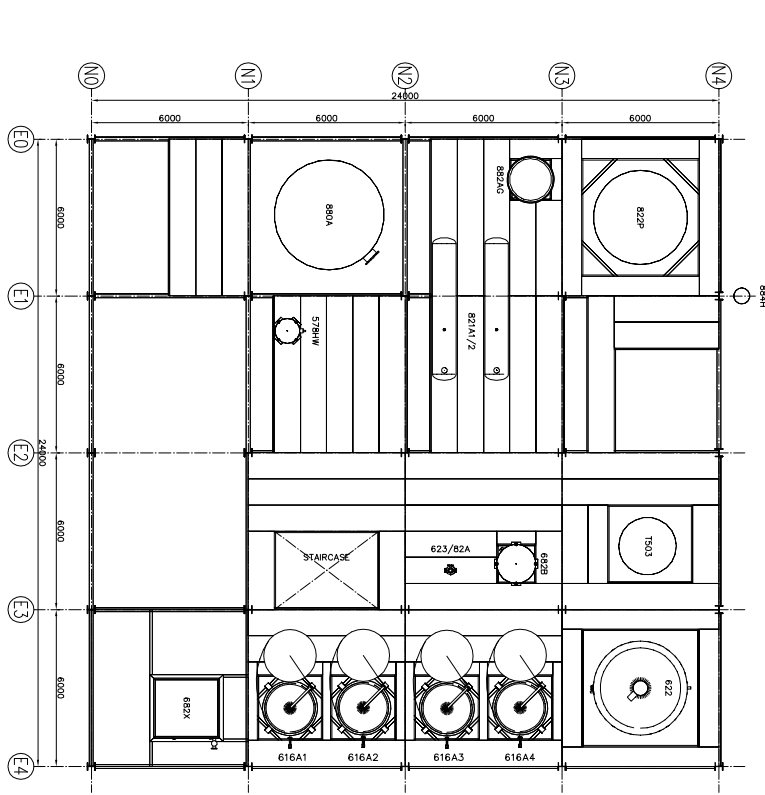
FLOOR AT LEVEL +0M000



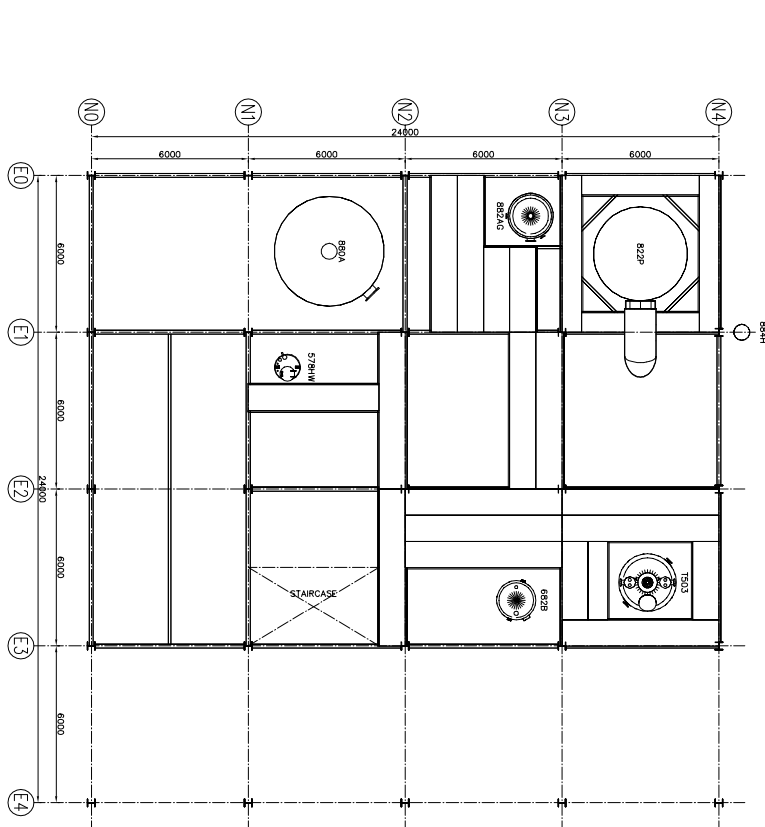
FLOOR AT LEVEL +3M500



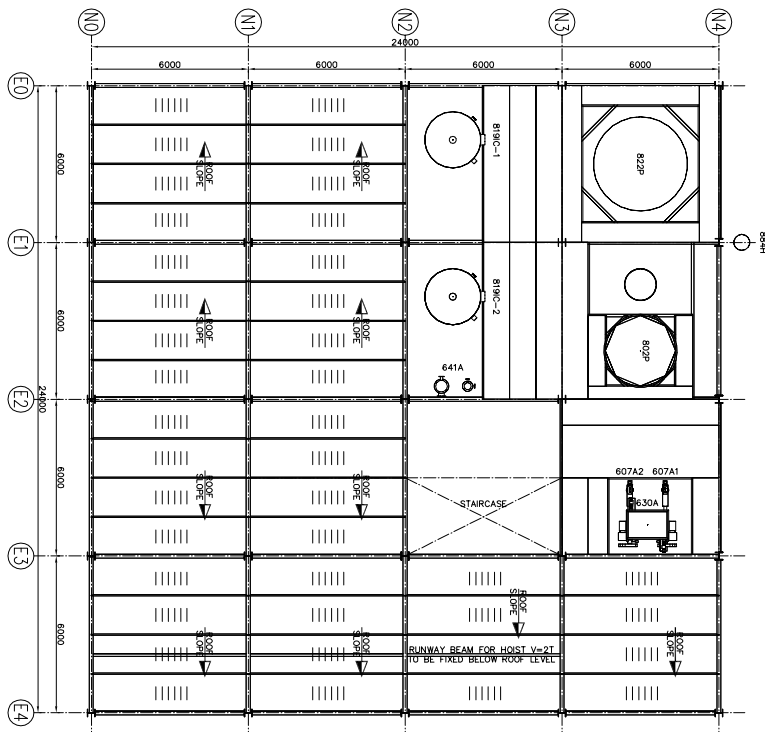
FLOOR AT LEVEL +7M000



FLOOR AT LEVEL +10M500



FLOOR AT LEVEL +14M000



FLOOR AT LEVEL +17M500

REV	DATE	DESCRIPTION OR MODIFICATION	DRAWN BY	CHECKED BY
0				
1				

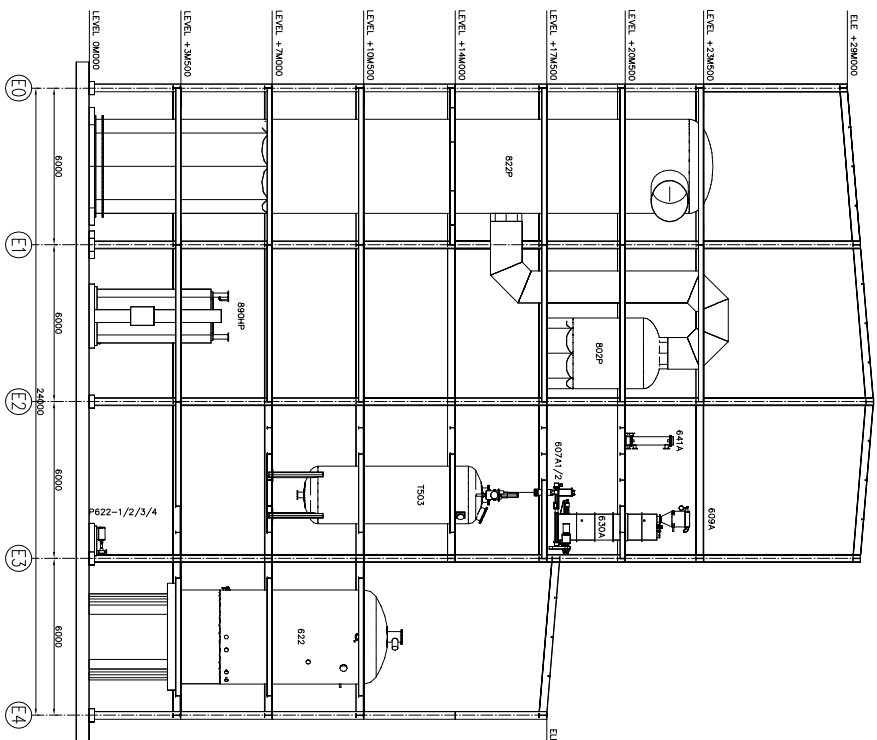
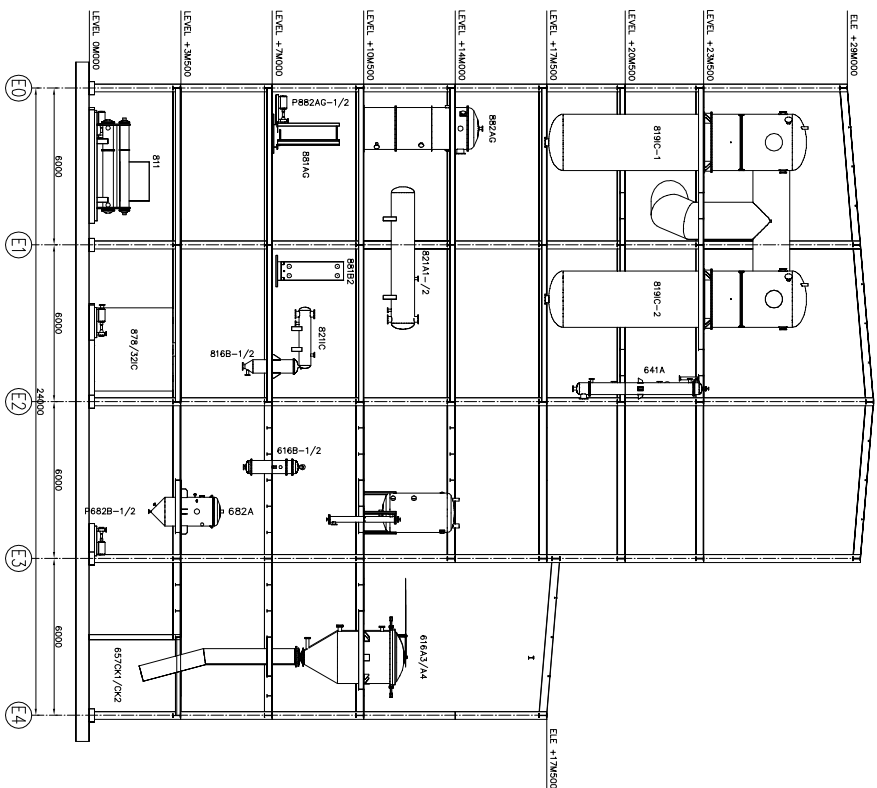
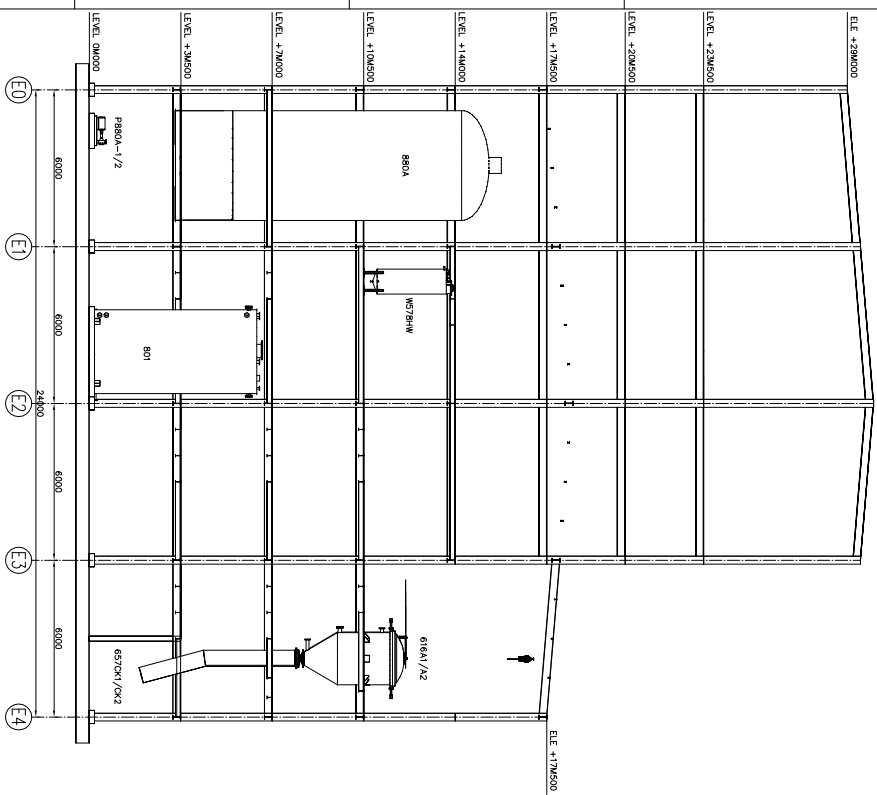
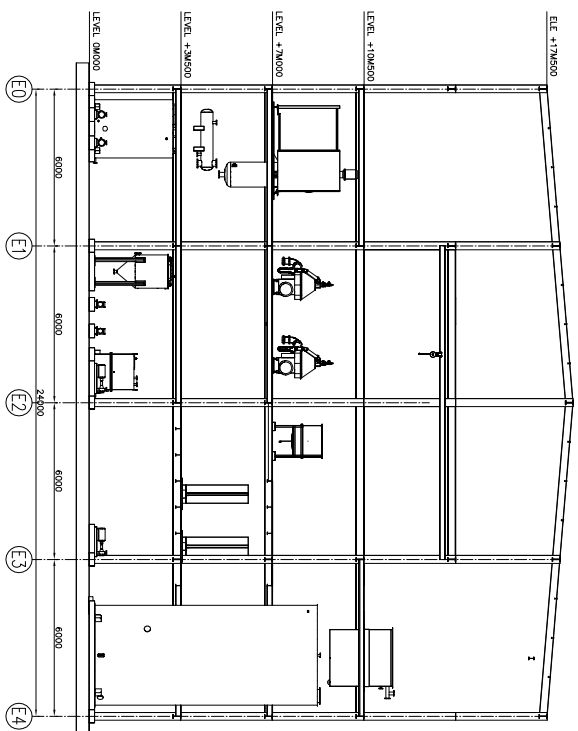
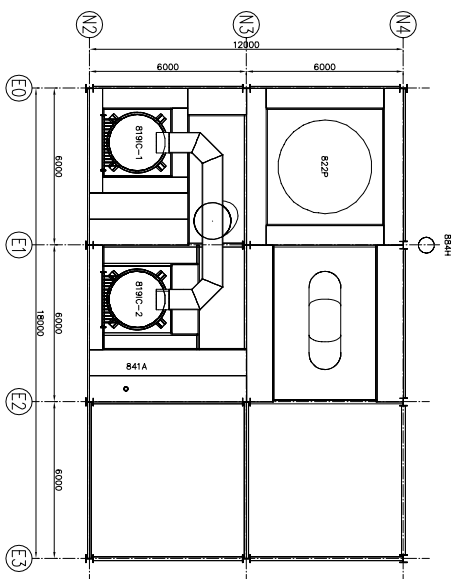
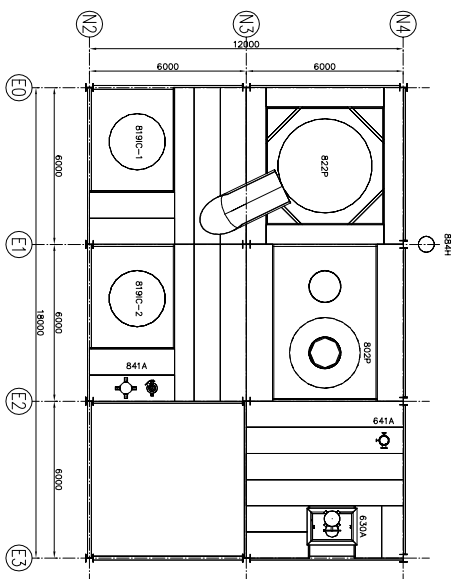
  

PROJECT	Desmet Ballestra Group
DOCUMENT TYPE	SALES
SCALE	1:100
DATE	30.04.2013

ITEM NO	W03-1707/09-097	DOCUMENT TYPE	SALES
DISCIPLINE	REFINERY LAYOUT	SCALE	1:100
DATE	30.04.2013	DRAWING NUMBER	001

A00(641 x 1189) 8 7 6 5 4 3 2 1 CAD DRWG. DO NOT SCALE !



ITEM NBR	ITEM DESCRIPTION	QTY	FLOOR WEIGHT
801	SECTION 800 - DECONDENSING		
801	BIFFER TANK	7.51	99.5T
802P	FEED PUMP	240.3T	240.5T
822P	FATSY VESSEL	4T	23T
822P	STRIPPING COLUMN SHELL & TUBE	2.2T	2.8T
822P	STRIPPING COLUMN ECONOMIZER	3.8T	19.2T
822P	STRIPPING COLUMN ECONOMIZER	2.8T	23.3T
822P	PNE. ASSEMBLED PNE.	2.8T	2.8T
822P	TUBESLOW	-	-
822P	REFINED OIL PUMP	240.3T	240.5T
822P	FATTY ACID COLLECTOR	1.7T	8.3T
822P	FATTY ACID COLLECTOR PUMP	240.3T	240.5T
822P	FINAL HEATER SHELL & TUBE	3.5T	4.5T
822P	PLATE HEAT EXCHANGER	0.5T	0.6T
822P	PLATE HEAT EXCHANGER	240.3T	240.5T
822P	PLATE HEAT EXCHANGER	0.5T	0.6T
822P	HP BOILER	10.2T	12T
822P	20000 W2 SUBMATION	240.3T	240.5T
822P	REPRESENTATION MACHINE ROOM	5T	5.8T
822P	WAGUAM PRODUCTION UNIT	5T	5.8T
822P	WAGUAM PRODUCTION UNIT	4.7T	8.3T
822P	HOT WATER HEATER	1T	1.5T
SECTION 15/400 CAP. 1000T0 - BLEACHING			
616A	MAIN HEMETIC FILTER	444.5T	413.9T
1501	OIL FEED TANK	6.8T	104T
1501	OIL FEED PUMP	240.3T	240.5T
1521A	OIL/OIL HEAT EXCHANGER	4.6T	5T
1521B	OIL HEATER	4.6T	5T
1504	ADD WATER	0.5T	0.6T
1503	ADD REACTOR	2.8T	28.3T
1522	CONVEYORS REACTOR	0.9T	6.0T
1522	RI-TESSED OIL TANK	240.3T	240.5T
616B	SELF CLEANING FILTER	240.3T	240.7T
616B *	STEAM SEPARATOR	0.6T	2.6T
616B	RECOVERED OIL TANK	0.3T	0.3T
622/822A	STEAM CONDENSER	0.2T	0.2T
616A	SPENT FATM COLLECTING HOPPER	4K	4K
616A	WAGUAM PRODUCTION UNIT	0.7T	1.8T
616A	WAGUAM PUMP	0.3T	0.4T
616A	FILTER ELEMENTS CLEANING STATION	3T	15.9T
616 *	STEAM SEPARATOR	-	240.5T
616A/822	BLEACHING FATM ROSSING DEVICE	240.3T	240.5T
616A	BLEACHING FATM HOPPER	2T	6.6T
616A	BLEACHING FATM FEED ASSEMBLY	0.8T	1T
610A	BLEACHING FATM SLO	240.3T	241.0T
SECTION 1600 CAP. 200T00 - DECONDENSING			
1624	STRIPPER	0.5T	0.7T
1601	OIL FEED TANK	1.4T	13T
1601	OIL FEED PUMP	240.3T	240.5T
1621A	OIL/OIL HEAT EXCHANGER	0.2T	0.3T
1621B	OIL HEATER	0.2T	0.3T
1602A	ADD WATER	0.5T	0.5T
1602A	COOLING SOA MIXER	0.5T	0.5T
1602A	CENTRIFUGAL SEPARATOR	3T	4.5T
1602A	WATER WASH WATER	0.5T	0.5T
1602A	WATER WASH REACTOR	0.15T	0.2T
1602A	WASHING CENTRIFUGAL SEPARATOR	3T	4.5T
1602D	OIL HEATER	0.2T	0.3T
1606	OIL DRYER	0.6T	2.4T
1606	DRYER DISCHARGE PUMP	240.3T	240.5T
1606	ADD OILS TANK	0.5T	2.4T
1602C	ADD OILS TANK	240.3T	240.5T
1602C	FAI-TAMP	1.3T	6T
1602C	RECOVERED WATER PUMP	0.5T	0.5T
1602C	ADD OILS TANK	0.5T	2.4T
1602C	ADD OILS TANK	240.3T	240.5T
1602C *	ADD PRE-MIXER	-	-
1602A	CAUSTIC SOA BUFFER TANK	0.5T	2.2T
1602A	CAUSTIC SOA Dosing PUMP	0.3T	0.5T
1602A	CAUSTIC SOA PRE-MIXER	-	-
1602A	HOT WATER TANK	2.7T	2.7T
1602A	HOT WATER PUMP	240.3T	240.5T
1602A	SEPARATOR BOWL CLEANING STATION	0.5T	0.9T
1602A	ALKALINE DETERGENT TANK	0.8T	4.2T
1602A	ADDIC DETERGENT TANK	0.8T	4.2T
1602A	ADDIC DETERGENT PUMP	240.3T	240.5T

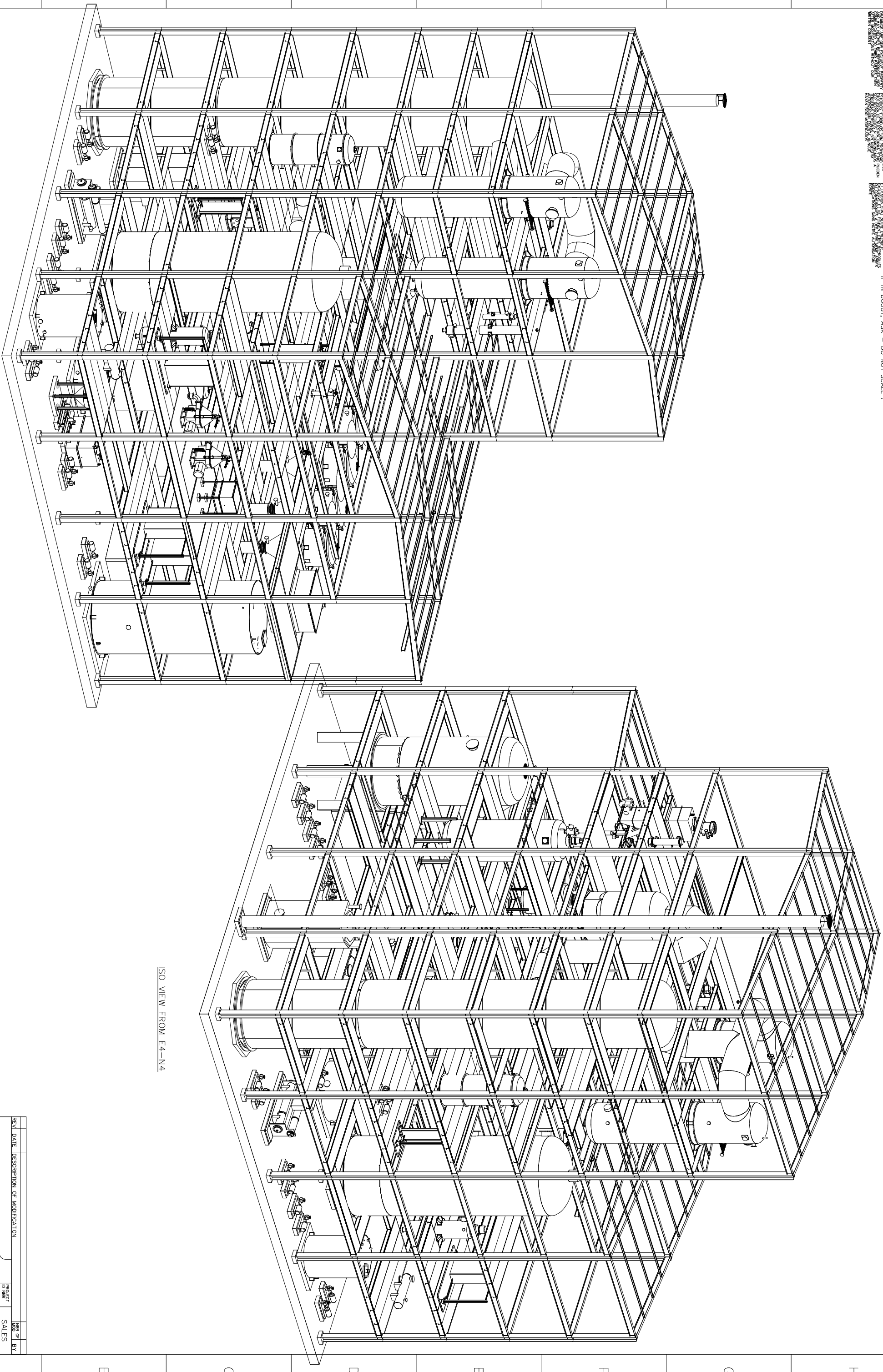
REV	DATE	DESCRIPTION OF MODIFICATION	DESIGNED BY	CHECKED BY
1				
2				

PROJECT	Desmet Ballestra Group
DOCUMENT TYPE	SALES
SCALE	1:100
FORMAT	A0
DATE	2014.2013
BRANCH	REFINERY PLANT
DRAWING NUMBER	PROPOSAL LAYOUT - PLAN VIEWS-2
REVISION	001



IF IN DOUBT, ASK - DO NOT SCALE !



ISO VIEW FROM E0-N0

ISO VIEW FROM E4-N4

REV	DATE	DESCRIPTION OF MODIFICATION	DESIGNED BY	CHECKED BY

PROJECT: **Desmet Ballestra Group**  
 SALES: **ENI**

ITEM	NO.	DESCRIPTION	DATE	BY	SCALE	FORMAT

PROJECT: **REFINERY LAYOUT**  
 SALES: **ENI**

ITEM	NO.	DESCRIPTION	DATE	BY	SCALE	FORMAT

PROJECT: **PROPOSAL LAYOUT - ISO VIEWS**  
 SALES: **ENI**

30.04.2013  
 001

IF IN DOUBT, ASK - DO NOT SCALE !

CAD DRWG.

DO NOT MODIFY

A0(841 x 1189)

8

7

6

5

4

3

2

1

DO NOT MODIFY

8

7

6

5

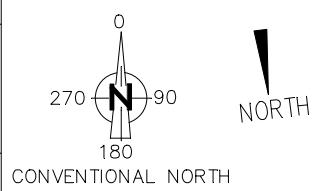
4

3

2

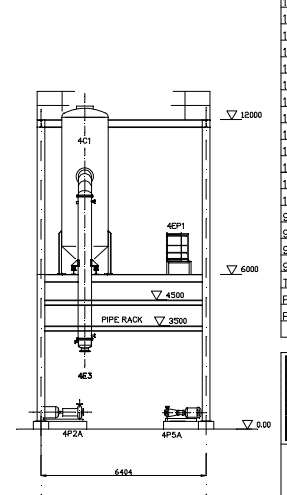
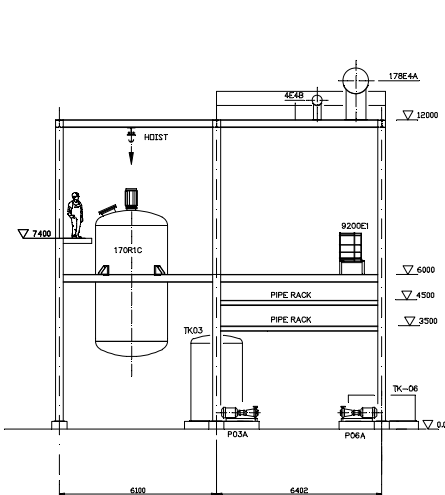
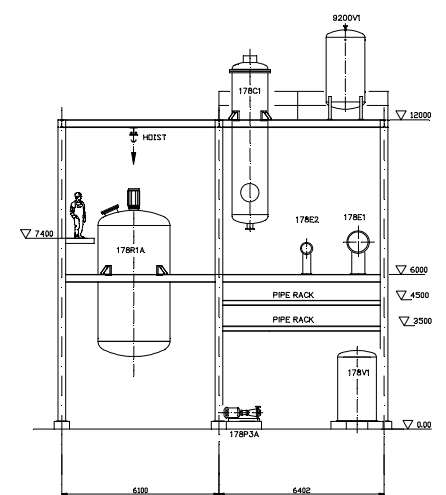
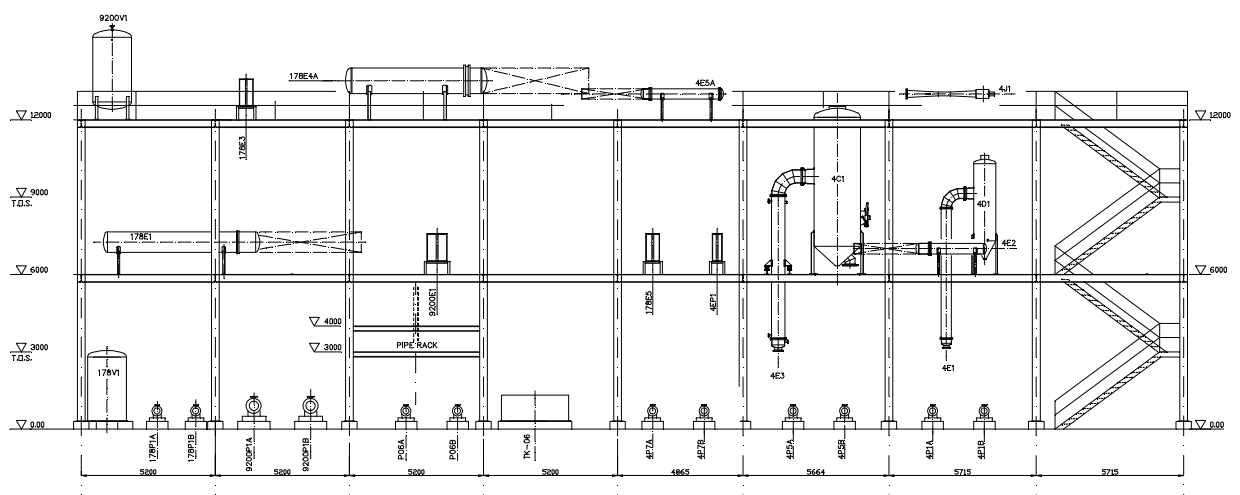
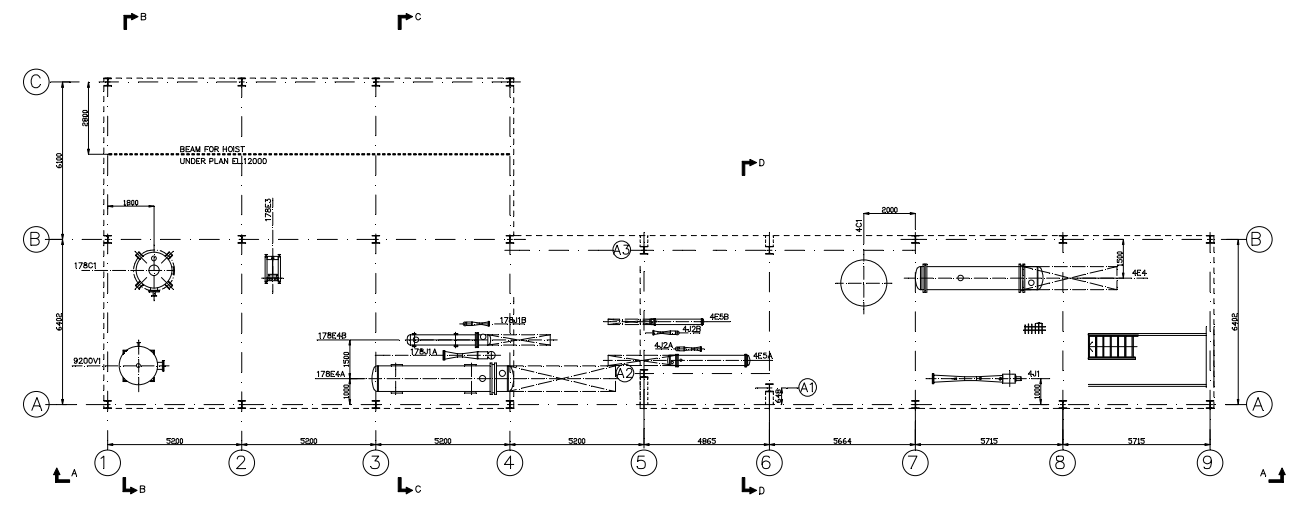
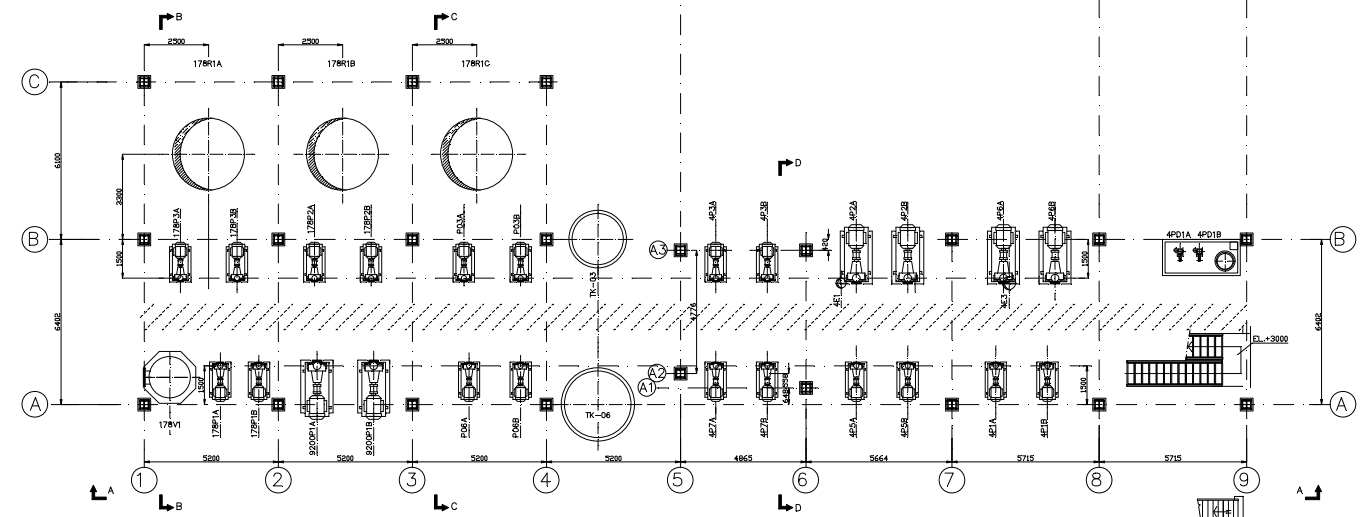
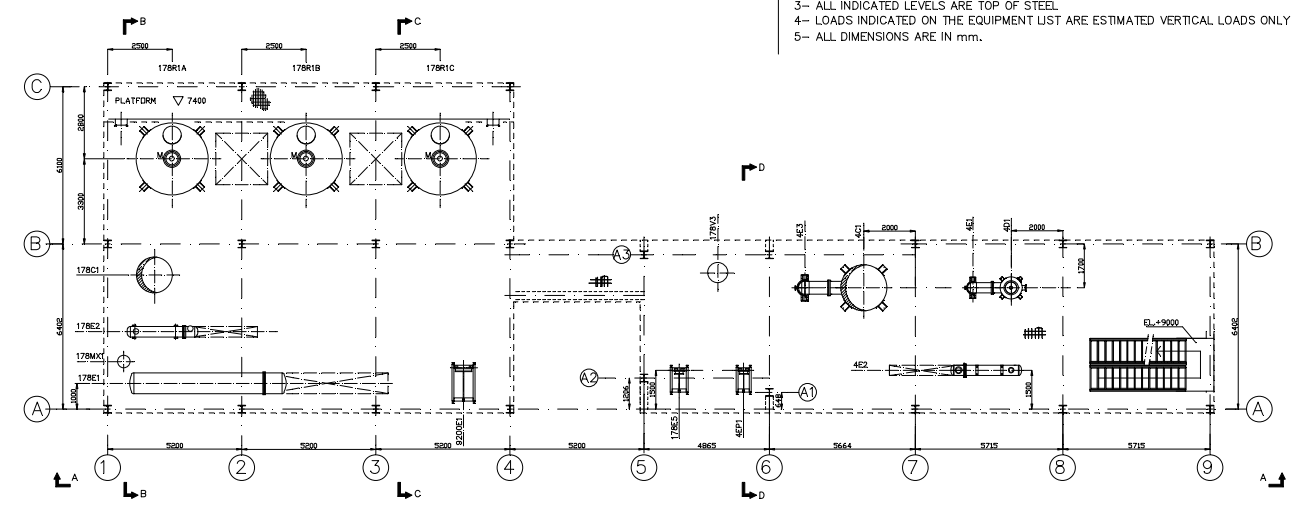
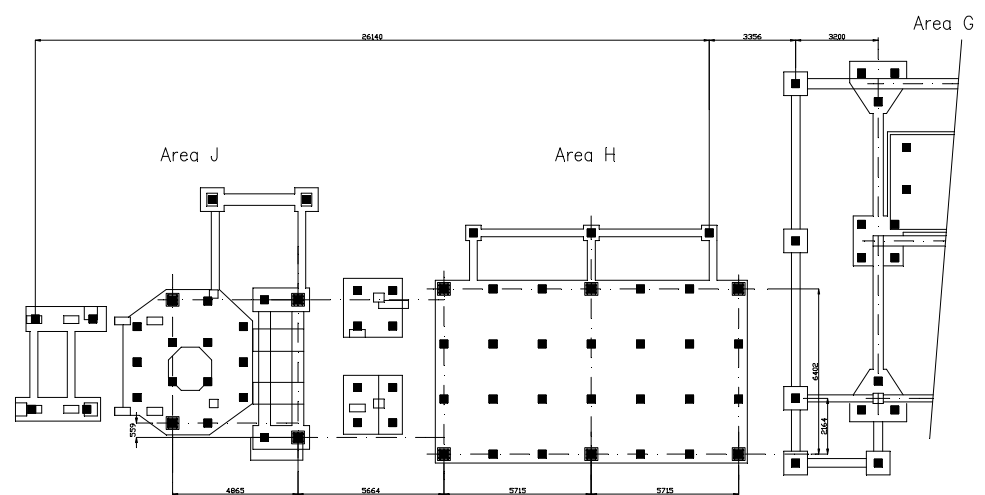
1

DO NOT MODIFY



**GENERAL NOTES**

- 1- THIS DRAWING IS NOT VALID FOR ORIENTATION OF EQUIPMENTS
- 2- INDICATED LOADS AND LOCATION OF BEAMS ARE GIVEN FOR INFORMATION ONLY
- 3- ALL INDICATED LEVELS ARE TOP OF STEEL
- 4- LOADS INDICATED ON THE EQUIPMENT LIST ARE ESTIMATED VERTICAL LOADS ONLY
- 5- ALL DIMENSIONS ARE IN MM.



ITEM	EMPTY WEIGHT Kg.	OPER. WEIGHT Kg.	ITEM	EMPTY WEIGHT Kg.	OPER. WEIGHT Kg.
17B-R1A	6072	40000	4-C1	3123	12000
17B-R1B	6072	40000	4-D1	855	1800
17B-R1C	6072	40000	4-E1	900	1800
17B-V1	1648	4500	4-E2	530	750
17B-V3	500	500	4-E3	1800	3700
17B-C1	1967	5500	4-E4	3500	5000
17B-E4A	4000	6000	4-E5A	1000	2000
17B-E4B	600	900	4-E5B	500	700
17B-E1	4300	7300	4-EP1	300	300
17B-E2	530	750	4-P1A	300	300
17B-E3	600	900	4-P1B	300	300
17B-E5	300	500	4-P2A	1000	1000
17B-P1A	300	300	4-P2B	1000	1000
17B-P1B	300	300	4-P3A	300	300
17B-P2A	300	300	4-P3B	300	300
17B-P3A	400	400	4-P5A	300	300
17B-P3B	400	400	4-P5B	300	300
17B-J1A	70	70	4-P6A	1000	1000
17B-J1B	70	70	4-P6B	1000	1000
17B-MX1	100	130	4-P7A	300	300
9200-E1	850	1000	4-P7B	300	300
9200-V1	1141	5700	4-PD1A	100	100
9200-P1A	1300	1300	4-PD1B	100	100
9200-P1B	1300	1300	4-J1	250	250
TK-06	2000	7000	4-J2A	70	70
P-06A	300	300	4-J2B	70	70
P-06B	300	300	TK-03	2300	8000
			P-03A	300	300
			P-03B	300	300

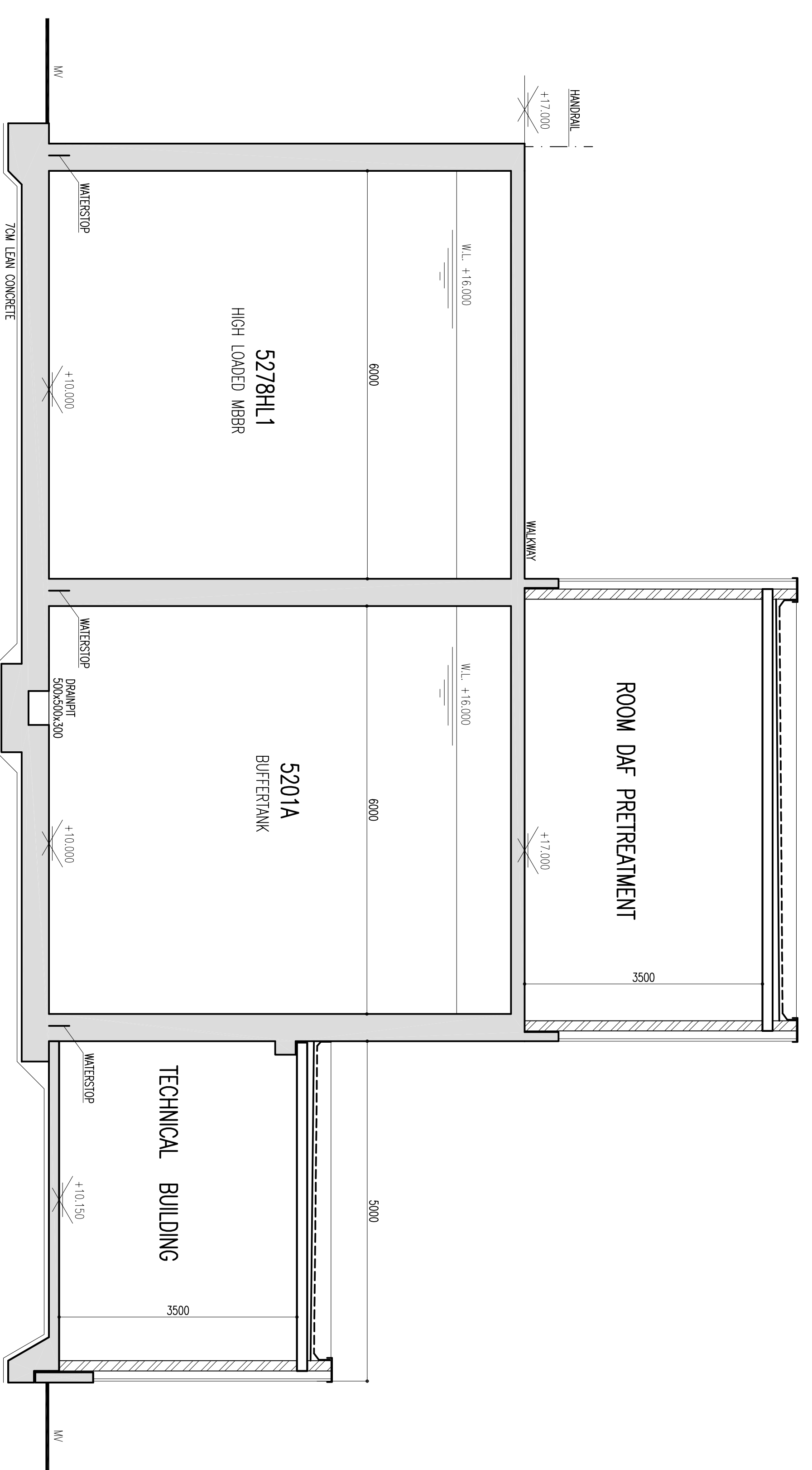
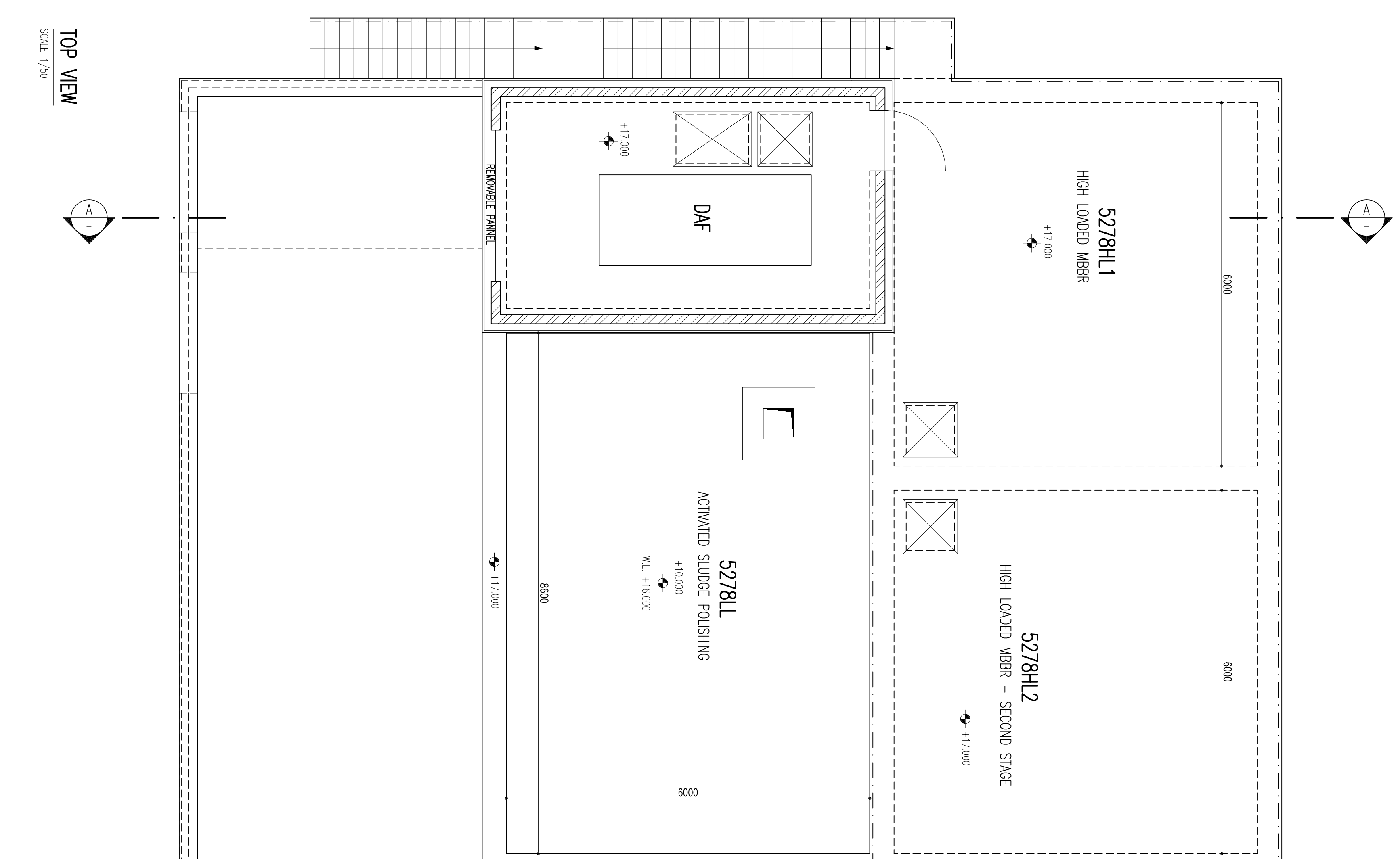
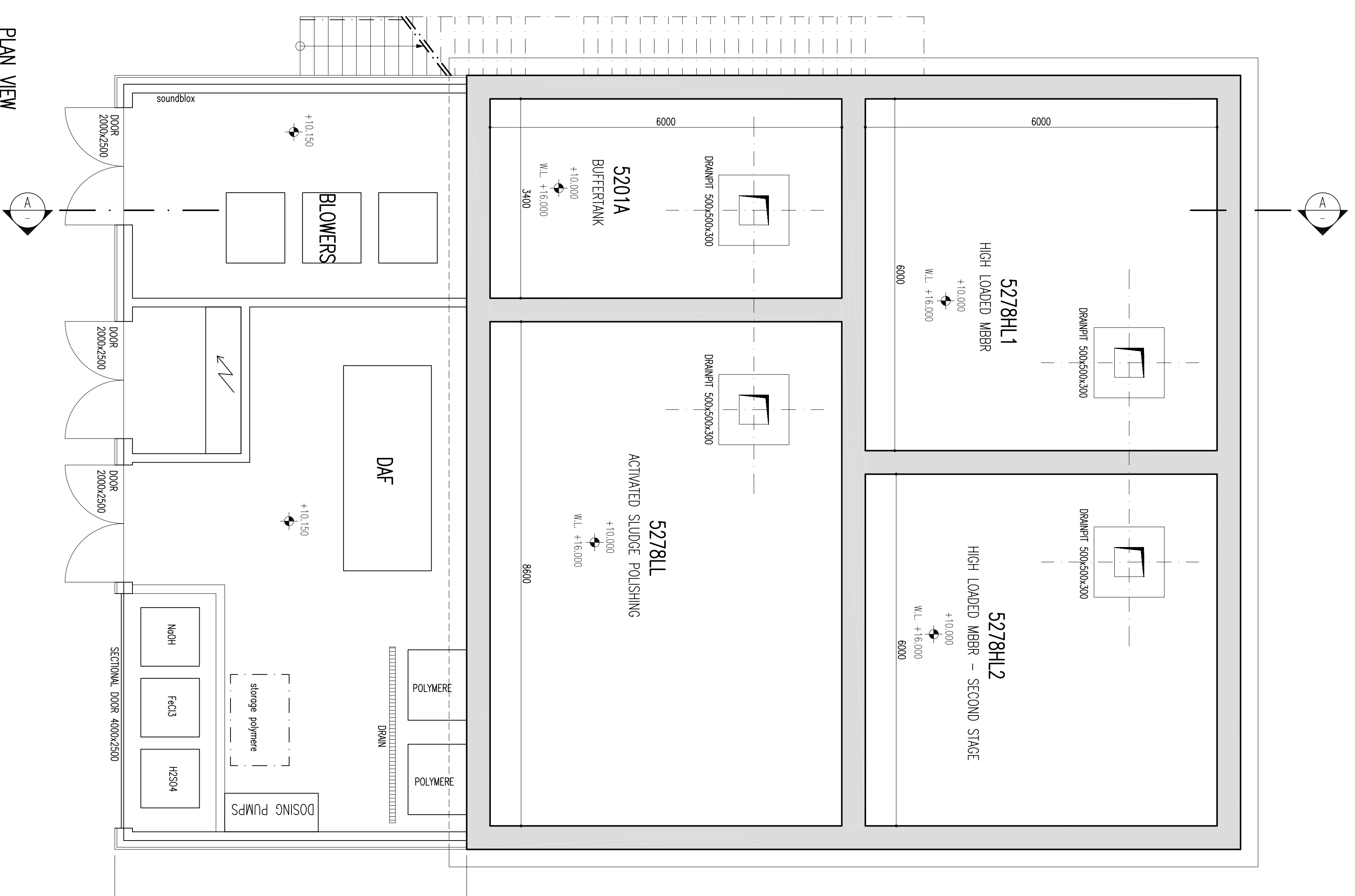
desmet ballestra s.p.a.  
Via del Costello Romano 21  
- 00040 Pomezia Roma - ITALY

CLIENT: AGIP PETROLI  
SITE: VENEZIA-ITALY  
JOB: OL12028

CONTINUOUS ESTERIFICATION  
WITH GLYCEROL  
PLOT PLAN

DATE: 12-04-13  
DRAWN: NEMA  
CHECKED: GP

DRAWING N°: OL12028-0-DW-20-002-01  
SHEET 1 OF 1 REV. 1  
FORMAT/SCALE: A0 / 1:100 UNIT:



SECTION  
SCALE 1/50

REFERENCES

ACCORDING TO THE LAW OUR SURVEYS AND COMMUNICATIONS TO THIRD PARTIES MAY BE REPRODUCED AND TRANSMITTED IN ANY FORM OR BY ANY MEANS WITHOUT OUR WRITTEN CONSENT.

REV	DATE	DESCRIPTION	DESIGN	CHECK	APPROB
2	15/05/2013	GENERAL MODIFICATION	NO		
1	14/05/2013	GENERAL MODIFICATION	NO		
0	13/05/2013	FOR REVIEW	NO		

**veolia**  
WATER  
SOLUTIONS & TECHNOLOGIES

WVS BELGIUM  
ESPERANTOLAAN 5  
3300 HEREN  
BELGIUM

TEL: +32 (0)16 81620  
FAX: +32 (0)16 81629  
WWW.VEOLIAWATERSIJBE

CLIENT: **DBG/DBI**

CONSULTANT:

PROJECT: **WASTE WATER TREATMENT PLANT**

DRAWING TITLE: **PLAN VIEWS AND SECTION**

PROJECT NO.:	—	SCALE:	1/100	FORMAT:	A0
DWG NO.:	C-101	SHEET NO.:	... of ...	REV. NO.:	2