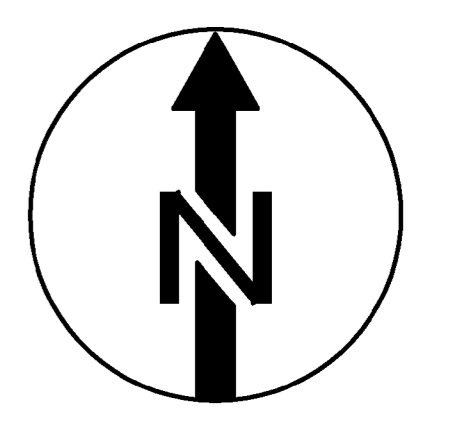


COMPRESSORI RILANCIO METANO

EXISTING CABLE-/ PIPE RACK TO SS2

EXISTING EQUIPMENT

EXISTING EQUIPMENT



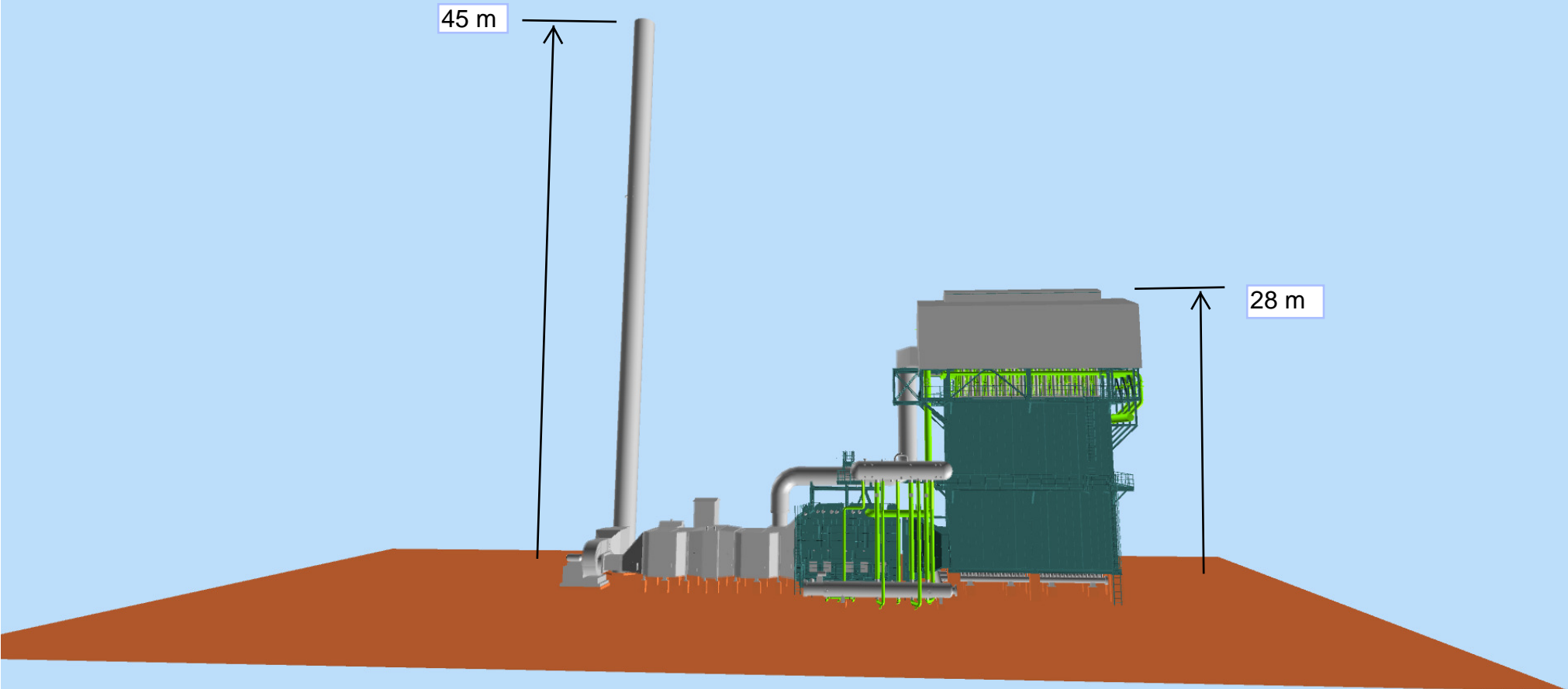
EQUIPMENT LIST	DESCRIPTION
00E001	NAPHTHA EVAPORATOR II
00E002	NAPHTHA SUPERHEATER
01R001	HYDROGENATION REACTOR
01R002A/B	DESULPHURIZATION REACTOR
02R001	PRE-REFORMER
03F001	STEAM REFORMER
03F002	CONVECTION BANK
03F002E11	FEED/STEAM PREHEATER I
03F002E12	FEED/STEAM PREHEATER II
03F002E31	STEAM SUPERHEATER I
03F002E32	STEAM SUPERHEATER II
03F002E41	COMBUSTION AIR HEATER I
03F002E42	COMBUSTION AIR HEATER II
03F002E71	STEAM GENERATOR
03F002E81	PROCESS CONDENSATE PREHEATER
03F002E82	PROCESS CONDENSATE EVAPORATOR
03D001	STEAM DRUM
03D002	BLOW DOWN DRUM
03D003	STEAM SILENCER
03D004	COMBUSTION AIR SILENCER
03D005	PC STEAM DRUM
03E001	PROCESS GAS COOLER
03E004	COMBUSTION AIR PREHEATER
03E007	PC BLOW DOWN COOLER
03E009	PC BLOW DOWN CONDENSER
03M001	COMBUSTION AIR FAN
03M001-M01	E-MOTOR FOR COMBUSTION AIR FAN
03M002	FLUE GAS FAN
03M002-M01	E-MOTOR FOR FLUE GAS FAN
03N001	STACK
04E001	PROCESS CONDENSATE EVAPORATOR
04E002	BOILER FEED WATER PREHEATER I
04E003	PROCESS CONDENSATE PREHEATER
04E005	AIR COOLER
04E006	TANK COOLER
04E007	PC COOLER
04E009	BOILER FEED WATER PREHEATER II
04S001	PC HOT SEPARATOR
04S002	PC COLD SEPARATOR
04S003	STEAM CONDENSATE FLASH DRUM
04F001A/B	PROCESS CONDENSATE PUMP
04F001A/B-M01	E-MOTOR FOR PROCESS CONDENSATE PUMP
04R001	HT CONVERTER
04R002	LT CONVERTER
06R001	PRESSURE SWING ADSORPTION (PSA) UNIT
07E005	NITROGEN RECYCLE PREHEATER
07E006	NITROGEN RECYCLE COOLER
07S001	NITROGEN RECYCLE KO DRUM
07N0003	NITROGEN RECYCLE COMPRESSOR
07N0003-M01	E-MOTOR FOR NITROGEN RECYCLE COMPRESSOR
80D001	CONDENSATE SLOP DRUM
80P002A/B	E-MOTOR FOR CONDENSATE SLOP PUMP
80P002A/B-M01	E-MOTOR FOR CONDENSATE SLOP PUMP
82D001	SEPARATOR
82P001A/B	BNW PUMP
82P001A/B-M01	E-MOTOR FOR BNW PUMP

- REMARKS:
- Existing Piling arrangement as per relay upon information from ENI
 - Existing Technical Control Room includes Marshalling cabinets to be used by Contractor
 - Existing Substation building (SS2) to be used by Contractor
 - Tie-In point (T.I.P.) to be considered as a single entry point of piping from ENI network
 - Single layer piperack.

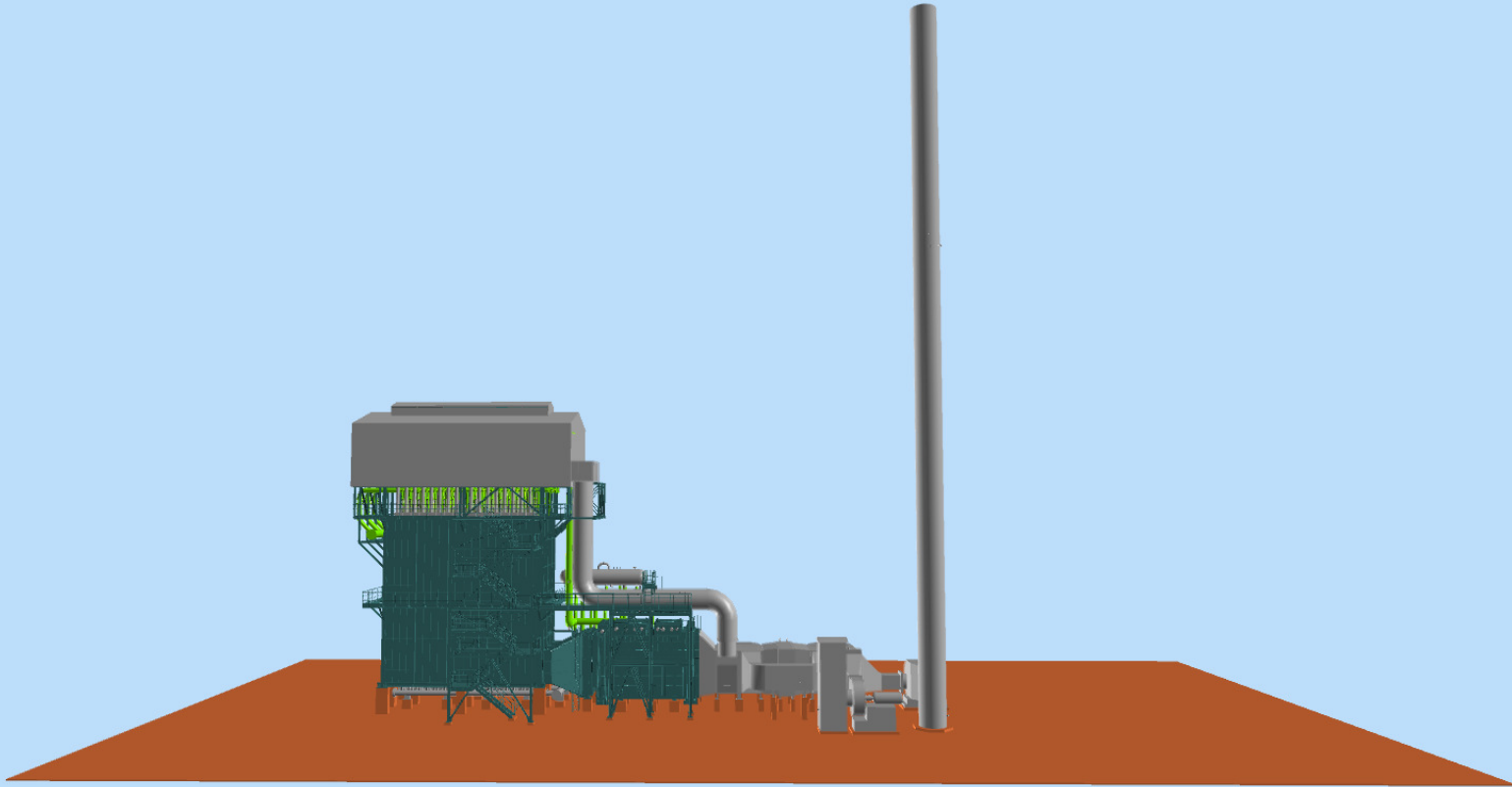
UHN	13-90-12303	Document ID	UBS-LA-LD-00001	Part	Rev. 03
Store Location: Server/Share		SAR Code			
Store Location: Folder		H:\013-90-12303			
Store Name		13-90-12303-UBS-LA-LD-00001-00.dwg			
Pro. Unit	Com. Unit	ITON	Group	Order No.	Type of Document Sheet

ENI H2 Plant Venice		ThyssenKrupp Uhde	
Drawn	05.05.2013	Name	HYDROGEN UNIT
Prepared	05.05.2013	Designation	OPTION B
Checked		Release Date	28.10.2013
Approved			

**Steam Reformer Unit and Flue Gas Stack
VIEW TO SOUTH**



**Steam Reformer Unit and Flue Gas Stack
VIEW TO NORTH**



**Steam Reformer Unit and Flue Gas Stack
VIEW TO EAST**

