



RICCIA WIND FARM

Indicative Energy Production Assessment Report

RWE Renewables Italia S.r.l.

Report No.: 01, Rev. A

Document No.: 10480288-ITBO-R-01-A

Date: 27 November 2023





Project name: Riccia Wind Farm
Report title: Indicative Energy Production Assessment Report
Customer: RWE Renewables Italia S.r.l.,
Via Andrea Doria 41/G 00192 Roma, Italy
Customer contact: Domenico Alberti
Date of issue: 2023-11-27
Project No.: 10480288
Organisation unit: Energy Systems
Report No.: 01, Rev. A
Document No.: 10480288-ITBO-R-01-A
Applicable contract(s) governing the provision of this Report: Call Off 52 Global FA – iEPA Riccia, P.O. n. 4300014965

Objective:
Provide an Indicative Energy Production Assessment Report for the Riccia Wind Farm

Prepared by:	Verified by:	Approved by:
Arian Hoxha Engineer, Project Development & Analytics, Italy	Alice Vergnani, Senior Engineer, Project Development & Analytics, Italy	Alice Vergnani, Senior Engineer, Project Development & Analytics, Italy

Copyright © DNV 2023. All rights reserved. Unless otherwise agreed in writing: (i) This publication or parts thereof may not be copied, reproduced or transmitted in any form, or by any means, whether digitally or otherwise; (ii) The content of this publication shall be kept confidential by the customer; (iii) No third party may rely on its contents; and (iv) DNV undertakes no duty of care toward any third party. Reference to part of this publication which may lead to misinterpretation is prohibited.

Rev. No.	Date	Reason for Issue	Prepared by	Verified by	Approved by
A	2023-11-27	First issue	Arian Hoxha	Alice Vergnani	Alice Vergnani

Table of contents

1	INTRODUCTION.....	1
2	PROJECT DESCRIPTION.....	2
2.1	General	2
2.2	Site description	3
2.3	Turbine models	3
2.4	Turbine layout	4
2.5	Neighbouring wind farms	4
3	INDICATIVE WIND ANALYSIS.....	5
3.1	Methodology	5
3.2	Results	6
4	INDICATIVE ENERGY ESTIMATE.....	7
4.1	Methodology	7
4.2	Results	7
5	UNCERTAINTIES.....	8
6	OBSERVATIONS AND RECOMMENDATIONS.....	9
7	REFERENCES.....	10
	APPENDIX A – MEAN WIND SPEED AT TURBINE LOCATIONS.....	A-1
	APPENDIX B - WIND TURBINE DATA.....	B-1



List of abbreviations

Abbreviation	Meaning
AEP	Annual Energy Production
ASL	Above Sea Level
BOP	Balance of plant
DNV	DNV Italy S.r.l.
NASA	National Aeronautics and Space Administration
P50	Exceedance probability: The probability of reaching a higher or lower annual energy production is 50:50
P90	Exceedance probability: The probability of reaching a higher or lower annual energy production is 90%
PC	Power curve
PLF	Plant Load Factor (equivalent to Capacity Factor)
RD	Rotor Diameter
SPV	Special Purpose Vehicle
SRTM	Shuttle Radar Topography Mission
TI	Turbulence intensity
WTG	Wind turbine Generator



1 INTRODUCTION

RWE Renewables Italia S.r.l. (the "Customer") retained DNV Italy S.r.l. (DNV), part of the DNV Group, to complete an independent indicative analysis of the wind regime and energy production of the proposed Riccia Wind Farm project. This report is issued to RWE Renewables Italia S.r.l. pursuant to a written agreement dated 06 November 2023 arising from the Proposal Call Off 52 Global FA, revision A, dated 19 October 2023.

DNV has previously undertaken an indicative energy assessment of the Project for the Customer, as presented in the DNV report referenced L243648-ITIM-R-02 Revision A dated 2023-02-24. The updated results of this assessment are based on a new wind turbine layout and a new wind turbine model.

The Project is located approximately 20 km southeast of the city of Campobasso, in Molise, and comprises of one wind farm, totalling 7 turbines with associated infrastructure.

As no on-site wind speed measurements were available, the results presented in this report are indicative in nature and subject to relatively high levels of uncertainty. It is recommended that the results of this assessment are considered with caution due to the level of uncertainty.

It is recommended that on-site measurements are undertaken at the project site using an IEC-compliant mast with at least three quarters of the proposed hub height, and that a full energy assessment is undertaken after at least 1 year of on-site data are available.

2 PROJECT DESCRIPTION

2.1 General

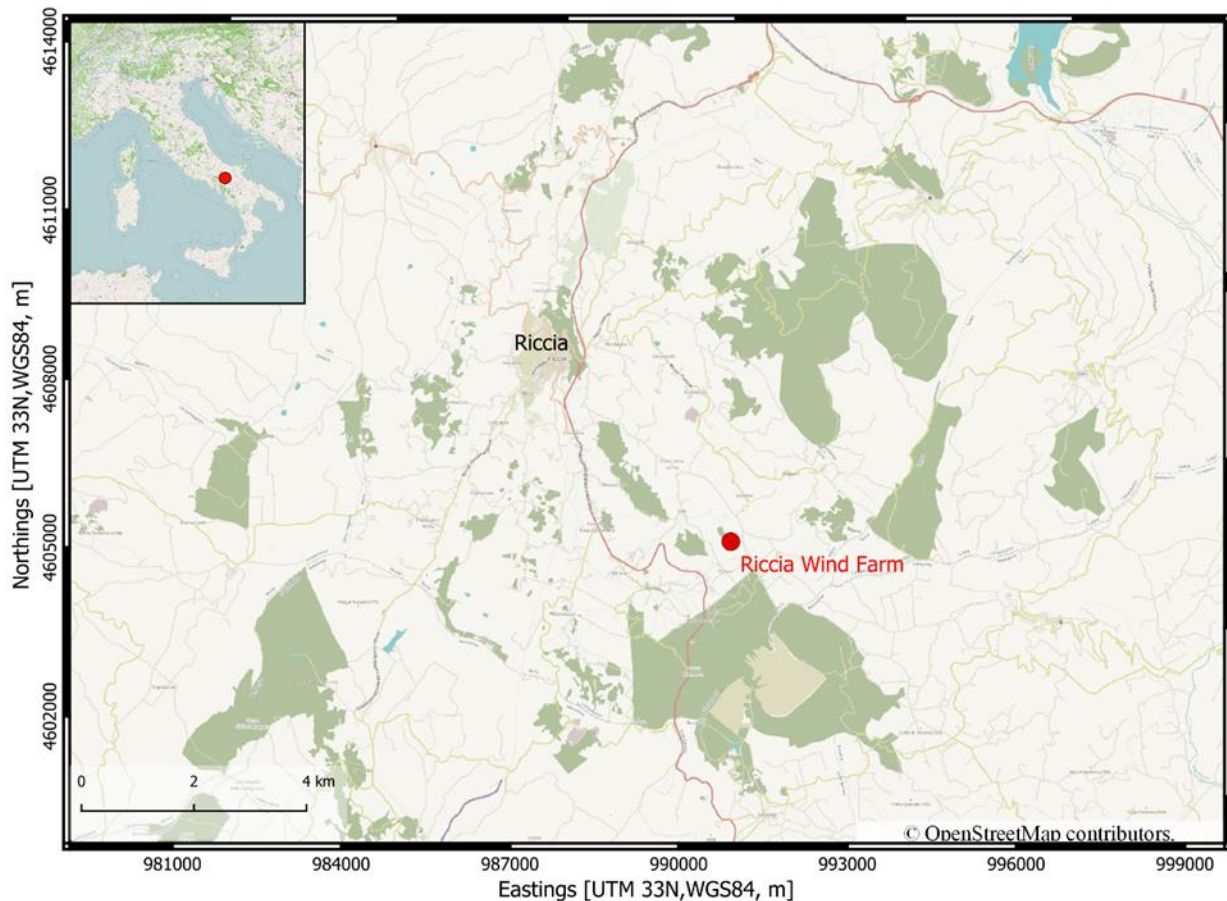
As shown in Figure 2-1 the Project is located in Molise. The Riccia Wind Farm is approximately 20 km southeast of Campobasso.

DNV has analysed one layout and one turbine configuration for the wind farm, as provided by the Customer /1/. The proposed configurations are summarised in the table below.

Table 2-1 Proposed configurations

Configuration	Number of turbines	Wind farm rated power [MW]	Turbine manufacturer	Turbine model	Turbine hub height [m]
A	7	49	Siemens Gamesa	SG7.0-170	115

Figure 2-1 Location of the proposed Riccia Wind Farm



2.2 Site description

Figure 2-2 is a map of the site, showing the turbine locations and elevation contours.

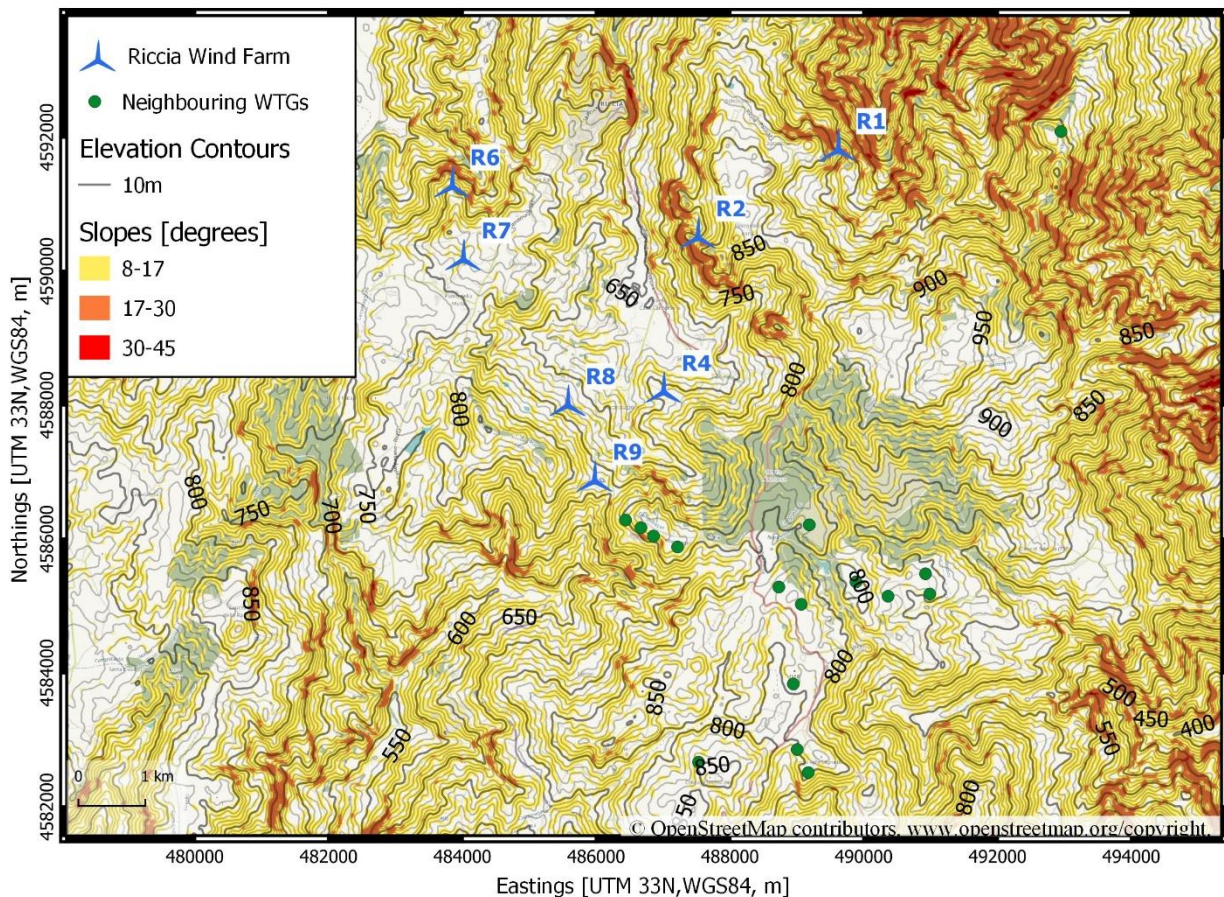
DNV has not visited the site. Publicly available aerial images have been used to assess the ground cover. The Project is located in a hilly area. The terrain at the site is considered to be significantly complex, since there are many areas of steep slopes within the Project area. The elevation of the proposed turbine locations ranges between approximately 700 m and 800 m above sea level.

The ground cover at the site consists predominantly of agricultural land, bushes, rocky outcrops and forestry, with a number of small settlements across the site area. 5 km from the site area there is the city of Riccia and some forestry is located around the project area.

Measurements of the wind regime have not been made at the site.

Turbine coordinates are shown in Appendix A.

Figure 2-2 Map of the Riccia Wind Farm



2.3 Turbine models

Table 2-2 summarises the turbine model under consideration for the Riccia Wind Farm project.

Table 2-2 - Proposed turbine model parameters

Turbine	Rated power [MW]	Hub height [m]	Peak power coefficient [Cp]	PC air density [kg/m ³]	PC turbulence intensity range [%]	Operational Temperature
SG7.0-170	7.0	115	0.47	1.225	5% < $T I_i$ < 12%	-20°C to +40°C

Using historical pressure and temperature records from nearby meteorological stations and standard lapse rate assumptions, the long-term mean air density at the site is estimated to be 1.116 kg/m³ at hub elevation of 860 m above sea level.

The characteristics and performance data of the turbine are presented in Appendix B. The power curve used in this analysis, has been provided by the Customer /3/. The power curve is based on the manufacturer’s calculations and has been adjusted to the site density. It is noted that the power curve supplied is only available at sea-level air density. This necessitates a large extrapolation to the predicted long-term air density of the site with additional adjustment and uncertainty associated; it is therefore recommended that a power curve be provided that is close to the site air density.

2.4 Turbine layout

Turbine layouts have been supplied by the Customer /1/. The following comments are made:

- Turbine spacings generally appear adequate.
- Some turbines are proposed near slopes. The slopes may increase the ambient turbulence and cause significant flow inclination at these turbines.

It is recommended that this is investigated further through a site meteorological conditions analysis, and that the turbine supplier be approached at an early stage to gain approval for the proposed layout and to ensure that sufficient warranty provisions are in place to cover these issues.

It is noted that dwellings were observed within the proposed wind farm area based on satellite imagery. DNV is not aware whether these are used for permanent living or they have cadastral records. The Customer should investigate the state of these buildings with the cadastral local office and in the light of this information update the constraints to the layout design where needed.

2.5 Neighbouring wind farms

The Riccia Wind Farm is located in an area of high wind farm development activity. Based on the review of publicly available data sources /2/, DNV has identified several operational wind turbines near the project.

In the absence of a site visit, DNV estimated the external wake losses based on generic assumptions for these turbines. The operation of these wind farms and the resulting wake effect was included in the analysis.

It is possible that additional wind energy projects will be built in the vicinity of the Project. However, there is insufficient information available to reasonably estimate the impact of future developments on the Project within the scope of work, and these have not been considered here. It is recommended that information regarding the neighbouring wind farms and future developments is collected and wake analysis reviewed accordingly.

3 INDICATIVE WIND ANALYSIS

3.1 Methodology

The indicative analysis of the site wind regime involved several steps, which are summarised below:

- The long-term frequency distribution at the site was derived based on Vortex FARM© data /4/. A tabular distribution (.tab file) based on a 100 meters horizontal resolution wind resource grid at 115 m height was extracted at the position of R4.
- In parallel, the long-term wind speed has been predicted for the site at the proposed hub heights at the position of R4, using the DNV Windicative platform, which is based on aggregated anonymised data from DNV experience. The search radius considered for the Windicative estimate is 30 km.
- The Windicative tool is intended to be used in those areas with significant wind farm development where DNV experience is sufficiently high. In that case, DNV considers that the uncertainty associated to Windicative predicted wind speeds is lower than corresponding Vortex data, as the platform is based on measured data. Therefore, the Vortex frequency distribution for the site was scaled to the predicted Windicative long-term wind speed to derive the hub height wind speed and direction frequency distribution at each turbine location.

Vortex FARM© data and DNV Windicative platform are described in more details in Sections 3.1.1 and 3.1.2 below.

Despite the use of Vortex and Windicative platform based on measured data, it must be acknowledged that, due to the absence of on-site measurements, the prediction of the long-term wind speed presented here is subject to a relative high level of uncertainty.

3.1.1 Vortex virtual data

In the absence of suitable on-site wind data, the wind frequency distribution at the site has been estimated via the use of Vortex FARM© data /4/.

Vortex FARM© data is developed from a mesoscale-model-based dynamical downscaling system that provides high-resolution modelled wind data for any location in the world, both on and offshore. At the heart of Vortex data is the Weather Research and Forecasting (WRF) Model, a mesoscale model developed and maintained by a consortium of more than 150 international agencies, laboratories, and universities, which employs a sophisticated land surface model, and high-resolution land- and sea-surface state data. Vortex data is driven by a number of high-resolution inputs, such as Modern Era Retrospective-analysis for Research and Applications (MERRA 2) data or European Centre for Medium-Range Weather Forecasts data (ERA 5) and downscaled to account for the effects of the local terrain and vegetation in and around the potential wind farm site.

A virtual tabular distribution (.tab file), centred at the site and based on a 100 meters horizontal resolution grid, was obtained for the analysis. The .tab file was obtained at 115 m height, and then scaled to the long-term wind speed predicted by Windicative.

3.1.2 DNV Windicative

DNV has used outputs from its Windicative service to assist with calibration of wind speeds and reduce uncertainty.

By leveraging the industry's largest commercial database of wind energy assessment experience, Windicative is able to provide data-driven estimates of hub height wind resource at locations without measurements. The distributions of wind speed at both the site and within the region provide a more informed view when compared to virtual series on their own.

The Windicative process begins by radially querying DNV's energy assessment database for previous observations of the wind regime around the Customer's site. The search radius has been defined to include a minimum number of observations around each site in order to anonymise data from the DNV database and include a sufficient number of points in the analysis. The regional wind speed data, representative of the long-term, are adjusted to hub height, using a

localised shear exponent and the Power Law, and then transformed, using a windiness ratio calculated from a mesoscale model, into a series of predictions of mean wind speed at the Customer’s location of interest. A cross prediction analysis is conducted to quantify confidence in the model and filter for outliers. The final predictions are then aggregated into a distribution to inform the mean wind speed and standard deviation.

Both the use of the Global Wind Atlas 3.0 /5/ and European Wind Atlas /6/ have been considered and tested. Based on this analysis, DNV has selected the Global Wind Atlas to be used as mesoscale model within the Windicative tool.

Global Wind Atlas 3.0 /5/ is a free, web-based application developed, owned and operated by the Technical University of Denmark (DTU). The Global Wind Atlas 3.0 is released in partnership with the World Bank Group, utilizing data provided by Vortex, using funding provided by the Energy Sector Management Assistance Program (ESMAP). For additional information: <https://globalwindatlas.info>.

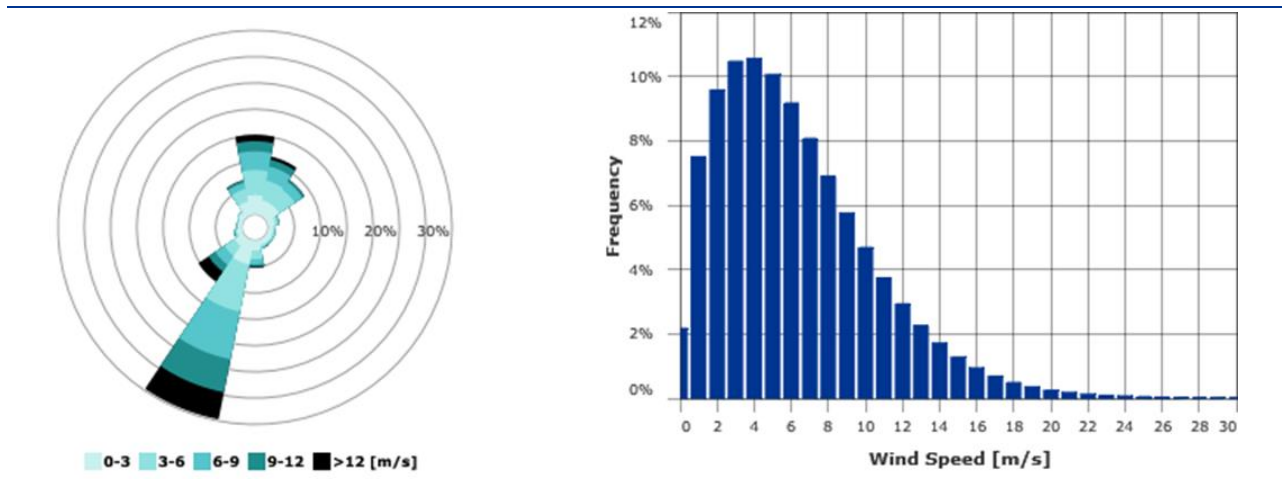
3.2 Results

The resulting estimated wind speed at the proposed hub height is presented in Table 3-1. The corresponding hub height wind rose and wind speed distribution are shown in Figure 3-1.

Table 3-1 Estimated site wind speeds

Configuration	Hub height [m]	Indicative mean wind speed at the position of R4 [m/s]	Average Wind Farm wind speed [m/s]
A	115	6.3	6.7

Figure 3-1 Wind Farm site long-term hub-height wind rose and frequency distribution at 115 m



4 INDICATIVE ENERGY ESTIMATE

4.1 Methodology

The gross energy production at the individual turbine locations has been calculated using the WindFarmer:Analyst software /7/ using the association method and the results of the wind analysis, together with the turbine power curve.

The projected net energy production of the wind farm has been calculated by applying a number of energy loss factors to the calculated gross energy production. The predictions represent the estimate of the annual production expected over the first 10 years of operation although wind farms typically experience some time dependency in availability and other loss factors before mature operation is reached.

It is stressed that the estimate of energy production is subject to several assumptions and is therefore subject to substantial uncertainty.

4.2 Results

The resulting energy production estimate is presented in Table 4-1, including calculation of the array and air density effects as well as assumptions or estimates due to the electrical transmission losses, availability, power curve adjustments, substation maintenance and environmental effects.

The net energy prediction presented below represents the long-term mean, 50% exceedance level, for the annual energy production of the wind turbine. This value is the best estimate of the long-term mean value to be expected from the project. There is therefore a 50% chance that, even when taken over very long periods, the mean energy production will be less than the value given. A more detailed description of potential sources of energy loss that have been estimated, assumed or not considered is given in Table 4-2 below.

Table 4-1 Indicative Energy production summary of the Riccia Wind Farm

Layout	A	
Turbine	SG7.0-170	
Wind Farm Rated Power	49.0	MW
Gross Energy Output	144.5	GWh/annum
Wake effect	98.3	% Project Specific
Availability	95.8	% DNV Standard
Electrical efficiency	97.0	% DNV Standard
Turbine performance	96.5	% Project Specific
Environmental	100.0	% Not considered
Curtailement	100.0	% Not considered
Net Energy Output	127.5	GWh/annum
Net Capacity Factor	29.7	%

Table 4-2 Energy loss parameters

Loss	Assumption for this analysis and rationale
Wake effect	The wake effects have been calculated using the DNV WindFarmer: Analyst Eddy Viscosity large wind farm wake model, and an empirical model of turbine interaction blockage effect /8/. This loss factor also includes wake effects from any surrounding operational wind farms. The effect of any future developments has not been included.
Availability	The availability loss factor presented here include turbine, balance of plant (BoP) and grid losses. No detailed project specific engineering review has been undertaken. DNV standard assumptions have been used.
Electrical efficiency	The details of the specific balance of plant infrastructure and grid connection point have not been considered. DNV standard assumptions have been used.
Turbine performance	General assumptions have been made on the degradation of the turbine components, as well as on site-specific wind flow issues (atmospheric stability, turbulence, wind shear, and upflow angle) that will adversely affect the performance of the turbines /11/. This loss factor also includes the effect of High Wind Speed Hysteresis.
Environmental	The energy effect of performance degradation or downtimes due to icing, and losses due to shutdown and temperature derating of the turbines have not been considered.
Curtailements	The possibility of WSM, grid curtailement, noise, visual or environmental curtailement have not been considered

5 UNCERTAINTIES

The results presented in this report are indicative in nature and subject to relatively high levels of uncertainty, due to the inherent uncertainties related to the prediction of the wind regime in the absence of on-site measurements, the assumptions used in the estimation of losses, and the characteristics of the site terrain and surrounding area.

Indicative probability of exceedance values for the 10-year production estimates are shown in Table 5-1 below for the layout scenarios considered.

Table 5-1 Summary of project indicative net average energy production

Layout	10-year [GWh/annum] Probability of exceedance		
	90 %	75 %	50 %
A	95.6	110.7	127.5

6 OBSERVATIONS AND RECOMMENDATIONS

No on-site wind data has been recorded at the project site. The wind regime at the site has been estimated via the use of Vortex data and DNV Windicative platform. The following observations and recommendations are made regarding this analysis:

1. The results presented in this report are indicative in nature due to the lack of on-site measurements and subject to relatively high levels of uncertainty. It is recommended that the results of this assessment are considered with caution due to the level of uncertainty.
2. It is recommended that on-site measurements are undertaken at the project site using an IEC-compliant mast with at least three quarters of the proposed hub height, and that a full energy assessment is undertaken after at least 1 year of on-site data are available.
3. The power curve supplied is only available at standard air density. This necessitates a large extrapolation to the predicted long-term air density of the site. It is recommended that a power curve at or close to the site air density be provided.
4. The site is proposed within a region of high wind farm development activity. It is likely that additional wind energy projects exist or will be built in the vicinity of the Project. However, there is insufficient information available to reasonably estimate the impact of future developments on the Project within the scope of work, and it is recommended that the Customer procures this information and supplies it in future updates of this work.
5. It is noted that, based on satellite imagery, dwellings were observed within the proposed wind farm area. DNV is not aware whether these are used for permanent living or they have cadastral records. DNV recommends that the noise levels at these locations are carefully considered and assessed. Shadow flicker may also be an issue. The Customer should investigate the state of these buildings with the cadastral local office and in the light of this information update the constraints to the layout design where needed.
6. Some wind turbines are proposed to be located close to slopes or a short distance downhill from ridge tops. These slopes may cause significant upflow and turbulence at these turbine locations. It is recommended that the levels of up flow and turbulence are measured at these locations. These slopes will also make the construction of the wind farm difficult and may also require costly foundations. It is recommended that the turbine manufacturer be approached at an early stage to gain approval for the location of the turbines in relation to the steep slopes and the turbine manufacturer confirms that all proposed turbine positions are acceptable and that sufficient warranty provisions are in place to cover these issues.
7. There are a number of losses for which DNV's standard assumptions have been made at this stage. It is recommended that the Customer considers each of these points carefully. They may vary materially from standard assumptions and can often be mitigated to some extent. No detailed project specific engineering review has been undertaken, and these assumptions may change as part of such a review.

7 REFERENCES

- /1/ Email from Domenico Alberti, RWE, to Arian Hoxha, DNV, on 2023-10-18
- /2/ Google Earth™ mapping service.
- /3/ Siemens Gamesa Renewable Energy, “Standard Ct and Power Curve, Rev. 0, Mode AM 0 - SG 7.0-170”, ref. D4085214 Rev 002, dated 2023-04-13
- /4/ <https://vortexfdc.com/>
- /5/ Global Wind Atlas 3.0, <https://globalwindatlas.info>
- /6/ New European Wind Atlas: <https://map.neweuropeanwindatlas.eu/>
- /7/ Garrad Hassan and Partners Ltd, “WindFarmer Theory Manual”, January 2011.
- /8/ Bleeg, J et al, “Wind Farm Blockage and the Consequences of Neglecting Its Impact on Energy Production”, June 2018.
- /9/ Geer, T. “How well are we predicting turbine performance”, DNV, EWEA, November 2015.

APPENDIX A – MEAN WIND SPEED AT TURBINE LOCATIONS

Table C-1 Mean wind speed at turbine locations – Configuration A

Turbine	Easting ¹ [m]	Northing ¹ [m]	Hub height [m]	Height of base [m]	Mean wind speed ² [m/s]
R1	489615	4591880	115	726	7.3
R2	487517	4590575	115	792	6.9
R4	487003	4588266	115	705	6.3
R6	483842	4591336	115	733	6.6
R7	484008	4590246	115	774	6.8
R8	485571	4588069	115	727	6.5
R9	485971	4586939	115	763	6.8

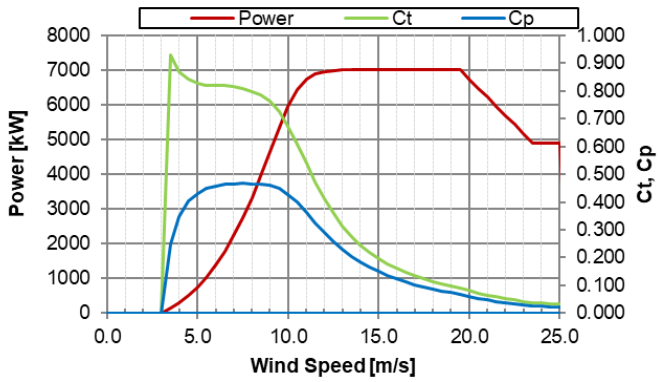
1 – Coordinate system is UTM, Zone 33, WGS84 datum

2 – Wind speed at the location of the turbine, not including wake effects.

APPENDIX B - WIND TURBINE DATA

Table B-1 Turbine data for the SG7.0-170

Manufacturer	Siemens Gamesa RE	Hub height wind speed [m/s]	Electrical power [kW]	Thrust coefficient [-]
Turbine	SG7.0-170	1	0.0	0.000
Power control	Pitch	2	0.0	0.000
Rated power	7000 kW	3	0.0	0.000
Diameter	170 m	4	310.0	0.870
Hub height	115 m	5	751.0	0.826
Rotor speed	-	6	1374.0	0.821
Air density	1.225 kg/m ³	7	2221.0	0.814
Turbulence intensity	5% to 12%	8	3318.0	0.798
Peak Cp	0.47	9	4659.0	0.762
Cut-out 10-minute mean wind speed	25 m/s	10	5950.0	0.672
Restart 10-minute mean wind speed	22 m/s	11	6728.0	0.540
		12	6962.0	0.412
		13	6997.0	0.314
		14	7000.0	0.246
		15	7000.0	0.198
		16	7000.0	0.162
		17	7000.0	0.135
		18	7000.0	0.114
		19	7000.0	0.098
		20	6737.0	0.081
		21	6212.0	0.065
		22	5687.0	0.053
		23	5162.0	0.043
		24	4900.0	0.037
		25	4900.0	0.034



Source: /3/





About DNV

DNV is a global quality assurance and risk management company. Driven by our purpose of safeguarding life, property and the environment, we enable our customers to advance the safety and sustainability of their business. We provide classification, technical assurance, software and independent expert advisory services to the maritime, oil & gas, power and renewables industries. We also provide certification, supply chain and data management services to customers across a wide range of industries. Operating in more than 100 countries, our experts are dedicated to helping customers make the world safer, smarter and greener.