



# COMUNE di TARANTO

## (Provincia di Taranto)

COPERTURA DEI PARCHI MATERIE PRIME  
DELLO STABILIMENTO DI TARANTO

TAVOLA  
**02**

COMMITTENTE:



Stabilimento di  
**TARANTO**

Società soggetta all'attività di Direzione e  
Coordinamento di RIVA FIRE S.p.A.

Scala:

Data:  
**Febbraio 2014**

UBICAZIONE:

**S.S. APPIA Km. 648 - Taranto**

PROGETTISTA:

Arch. Angelo Nuzzo  
via XX Settembre, 48 - Grottaglie (TA)  
tel/fax 099.5610476  
mail: angelo.nuzzo@archiworldpec.it



**PAUL WURTH**

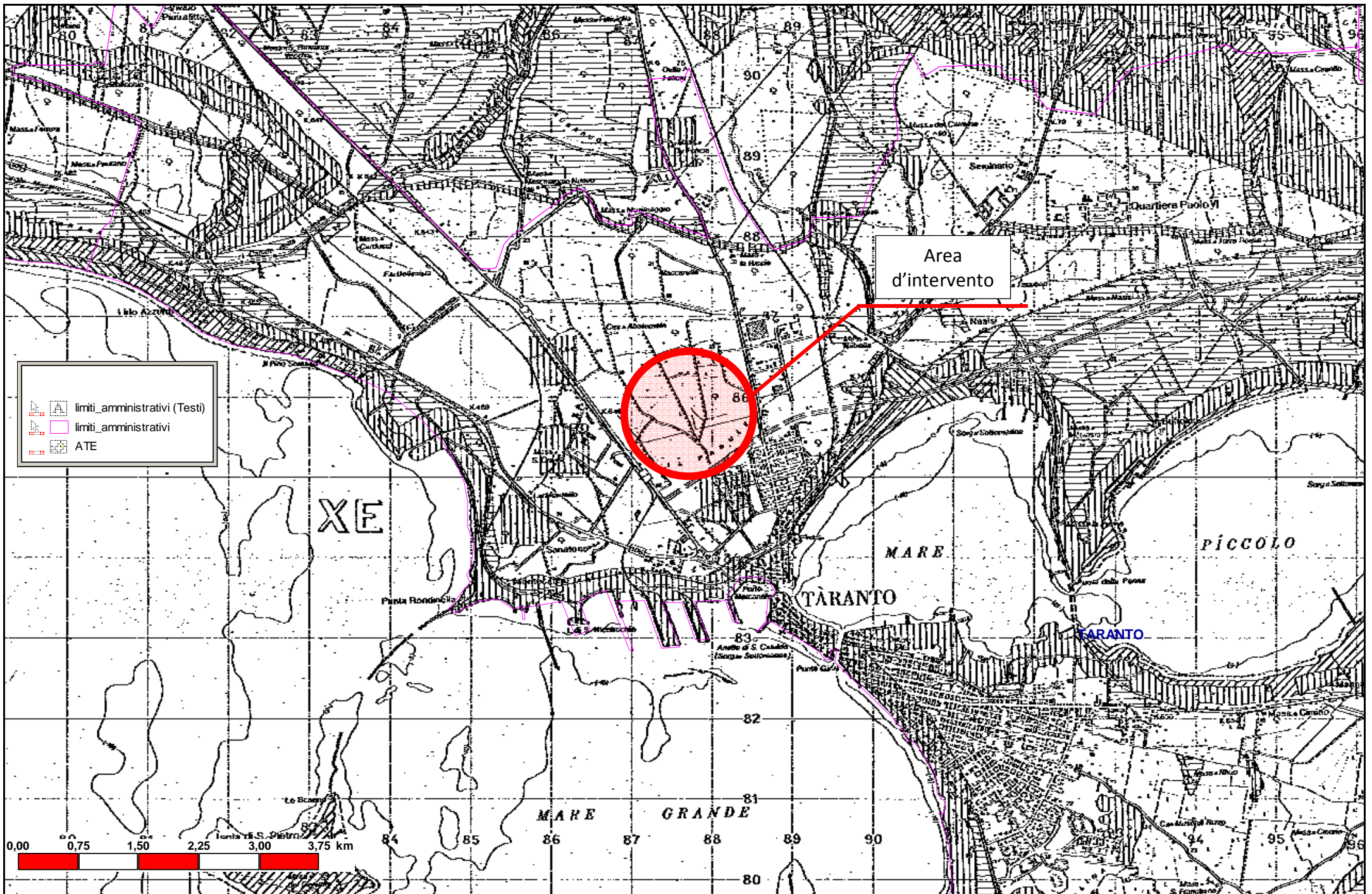
PAUL WURTH ITALIA S.p.A.

COLLABORAZIONE:

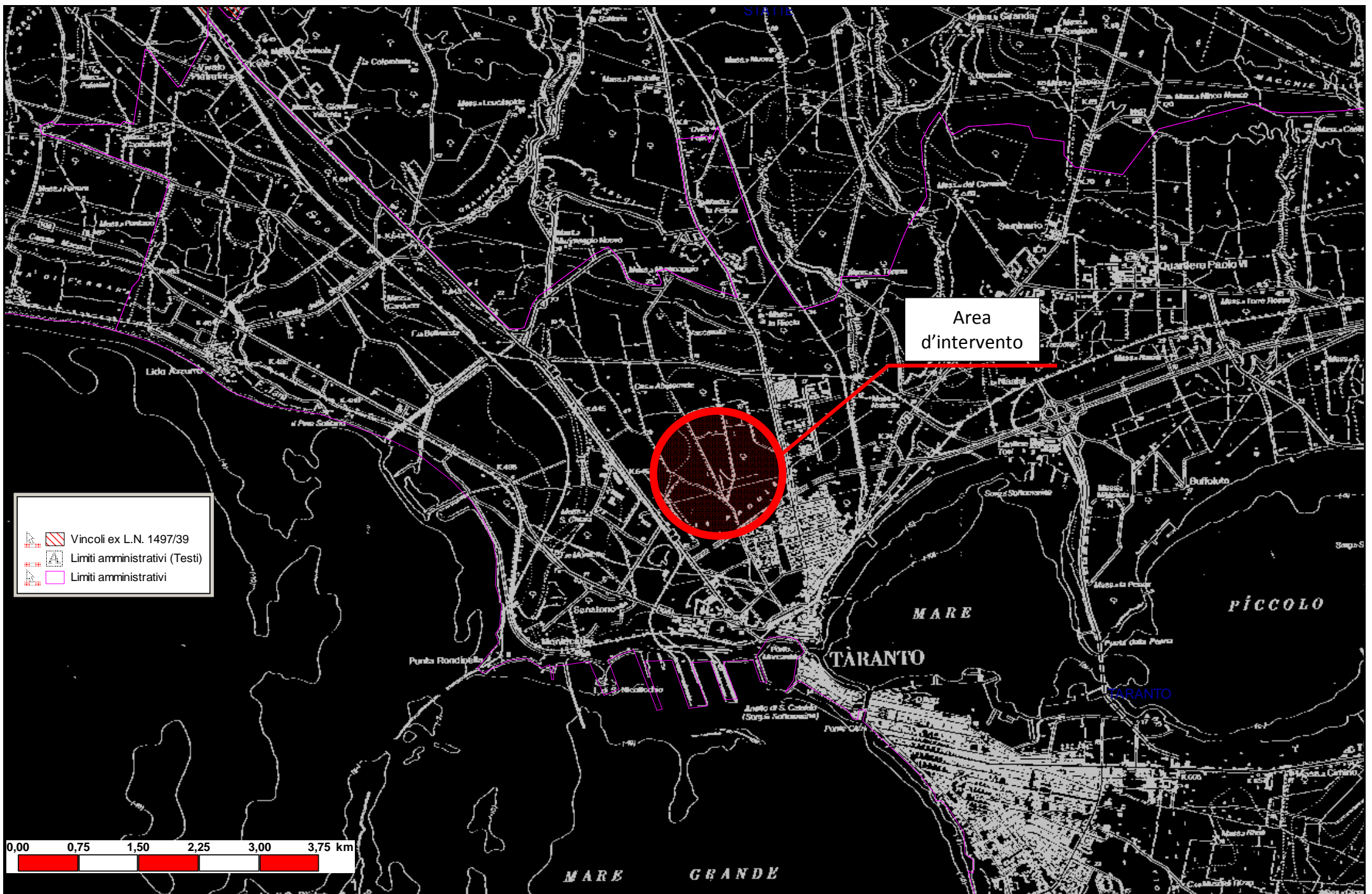
Arch. Giampiero Portulano

OGGETTO: **COPERTURA PARCO FOSSILE**  
**VINCOLI URBANISTICI**

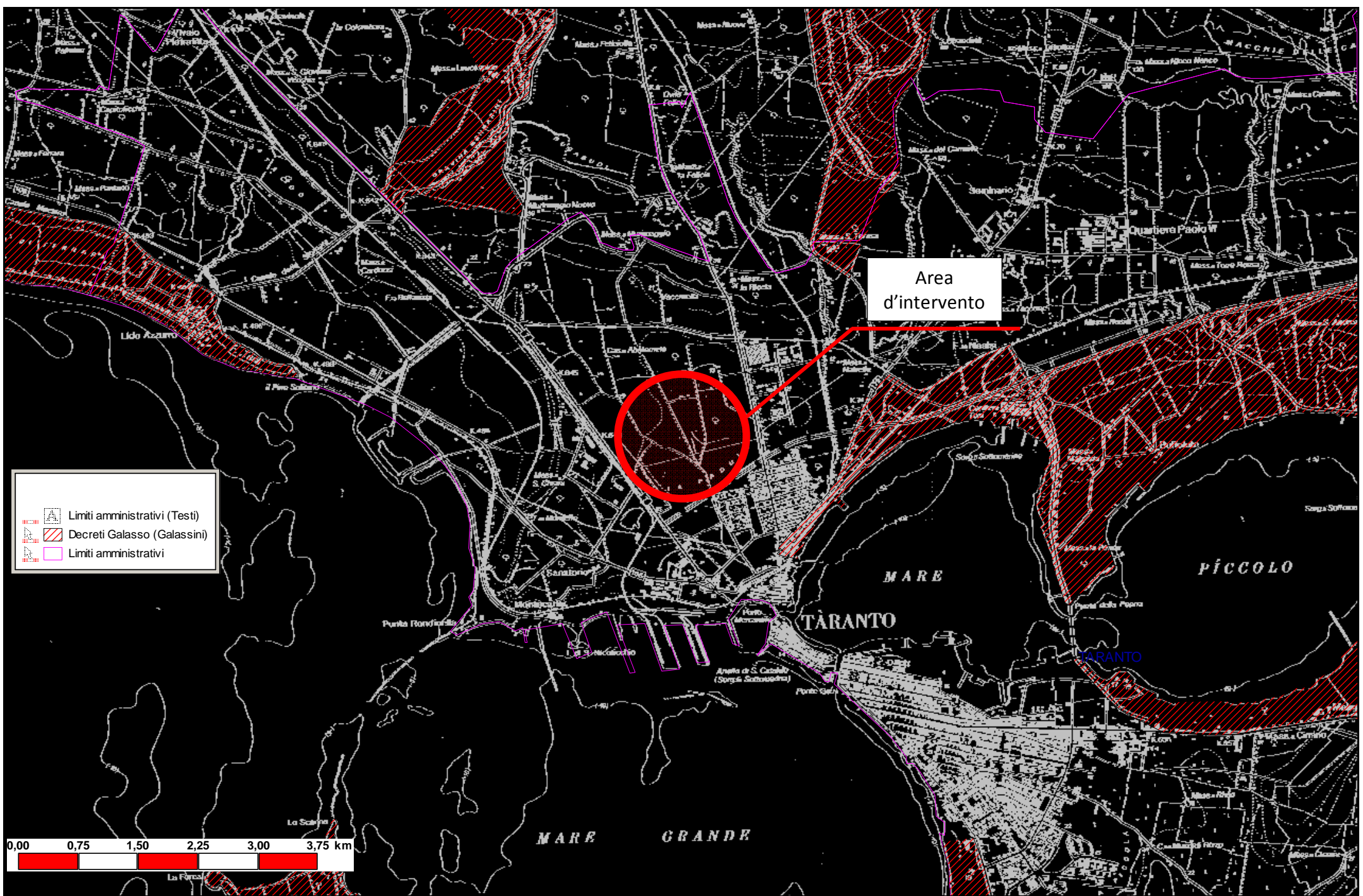




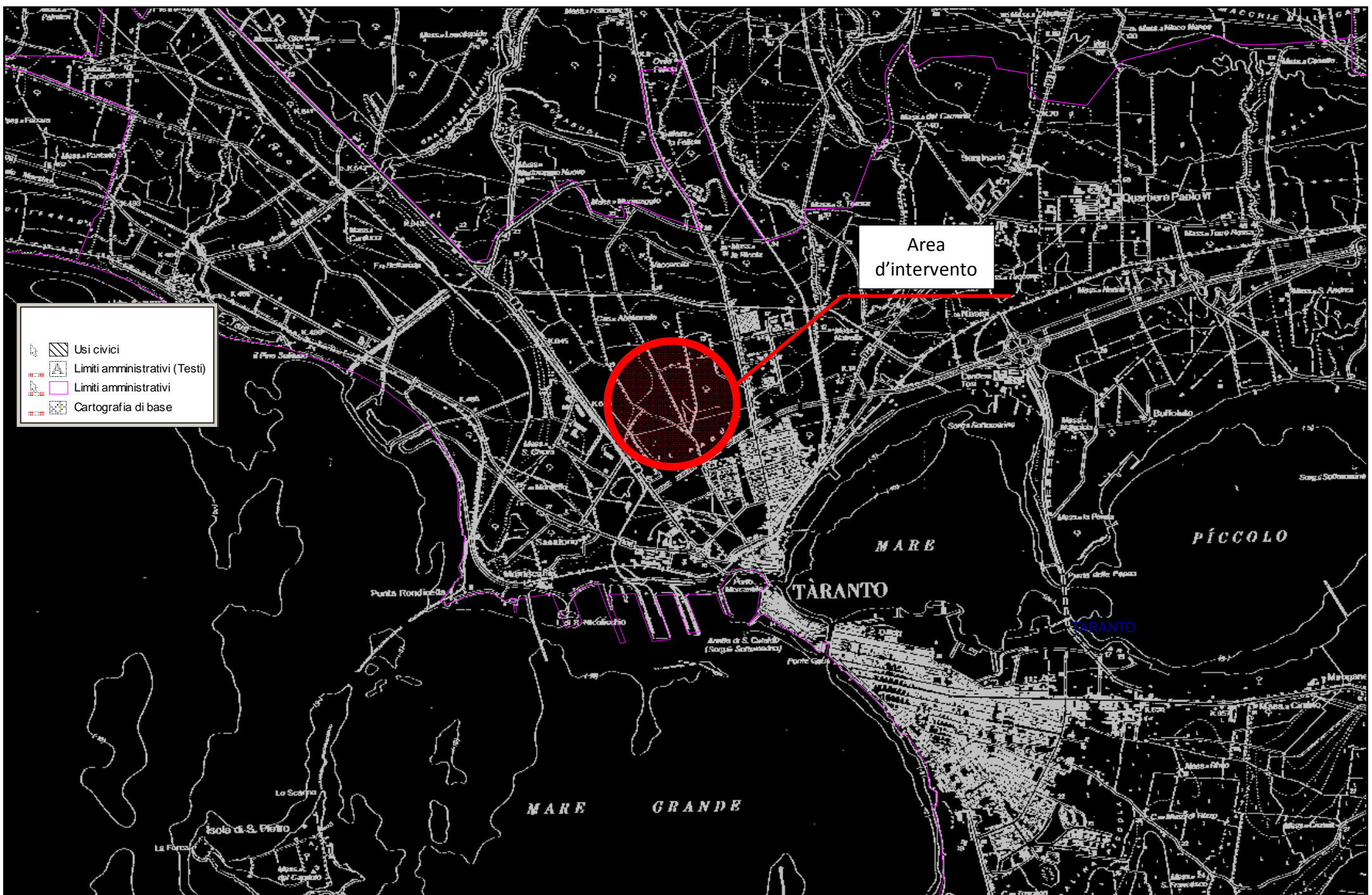
**Ambiti Territoriali Estesi**



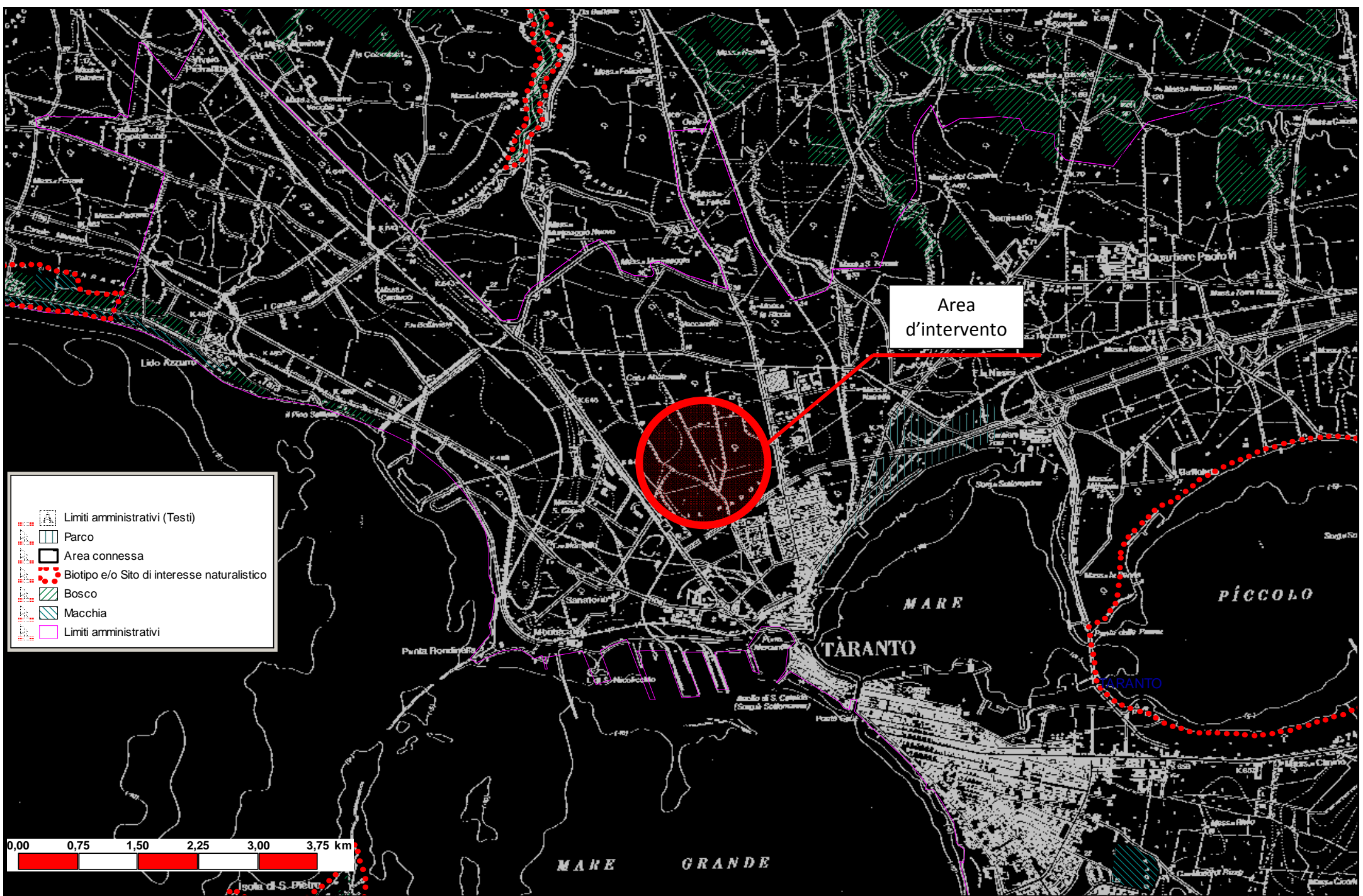
**Vincoli Ex-1497**



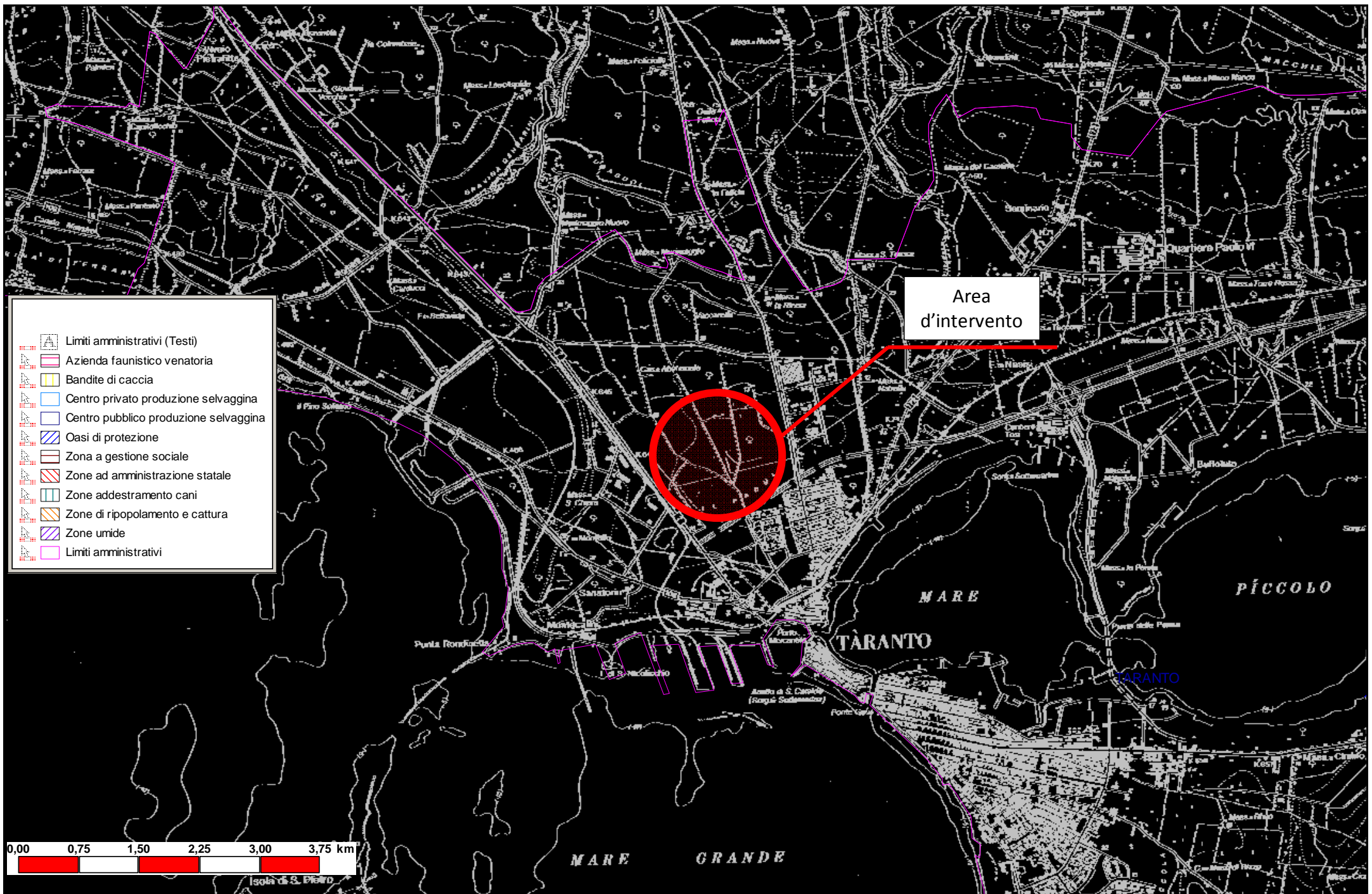
Decreti Galasso



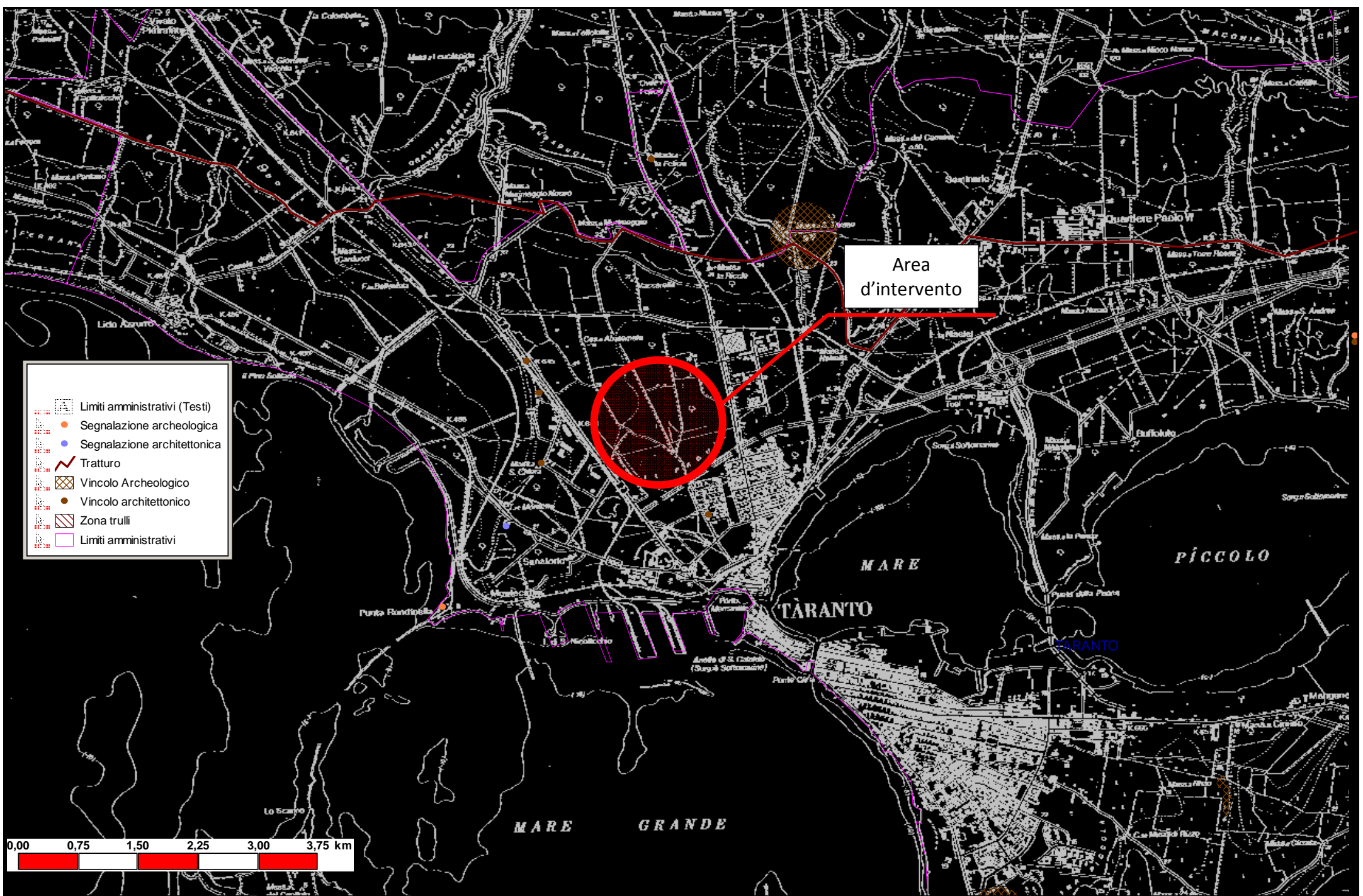
Usi Civici



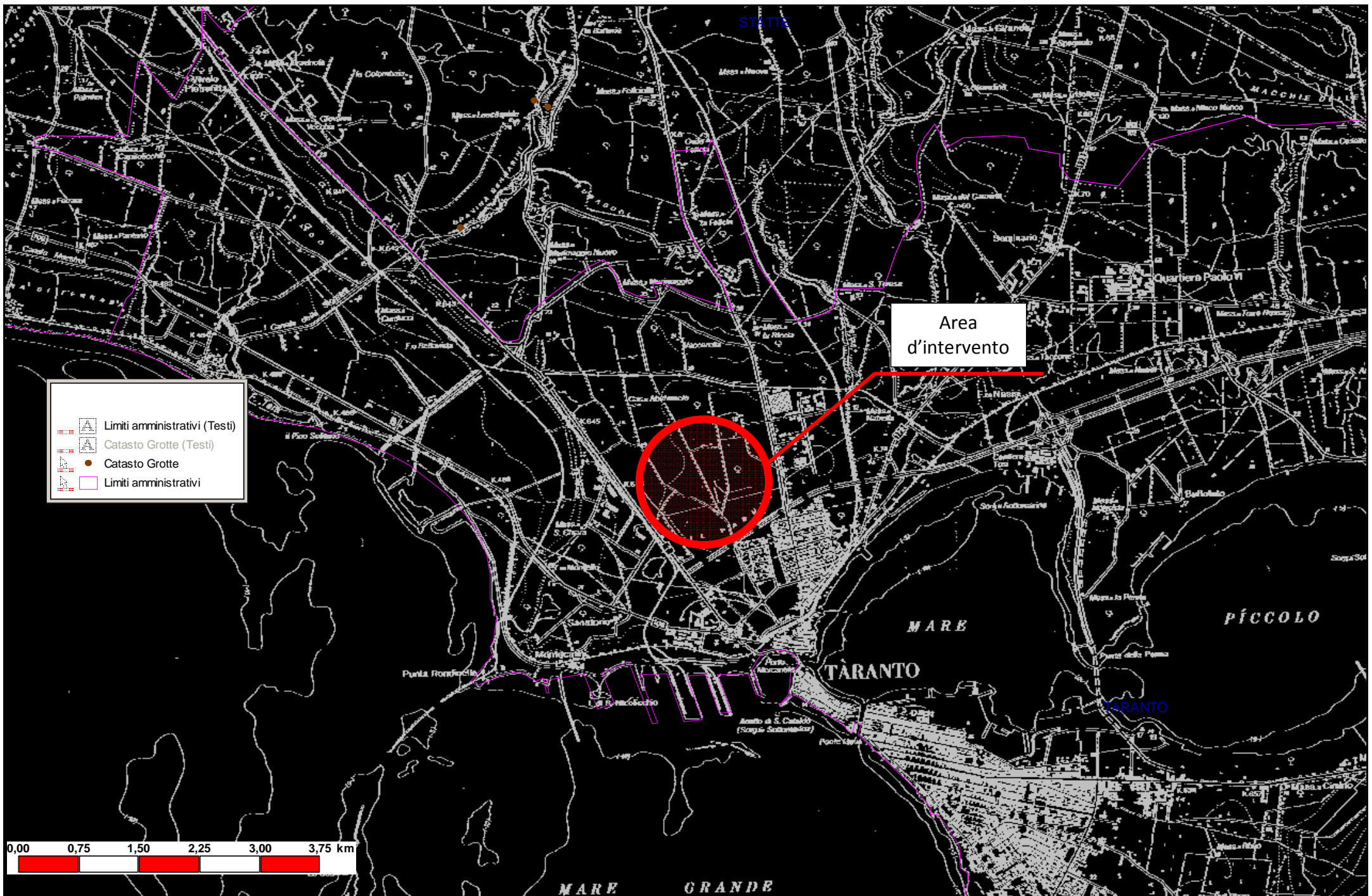
**Parchi, Boschi, Macchia e Biotipi**



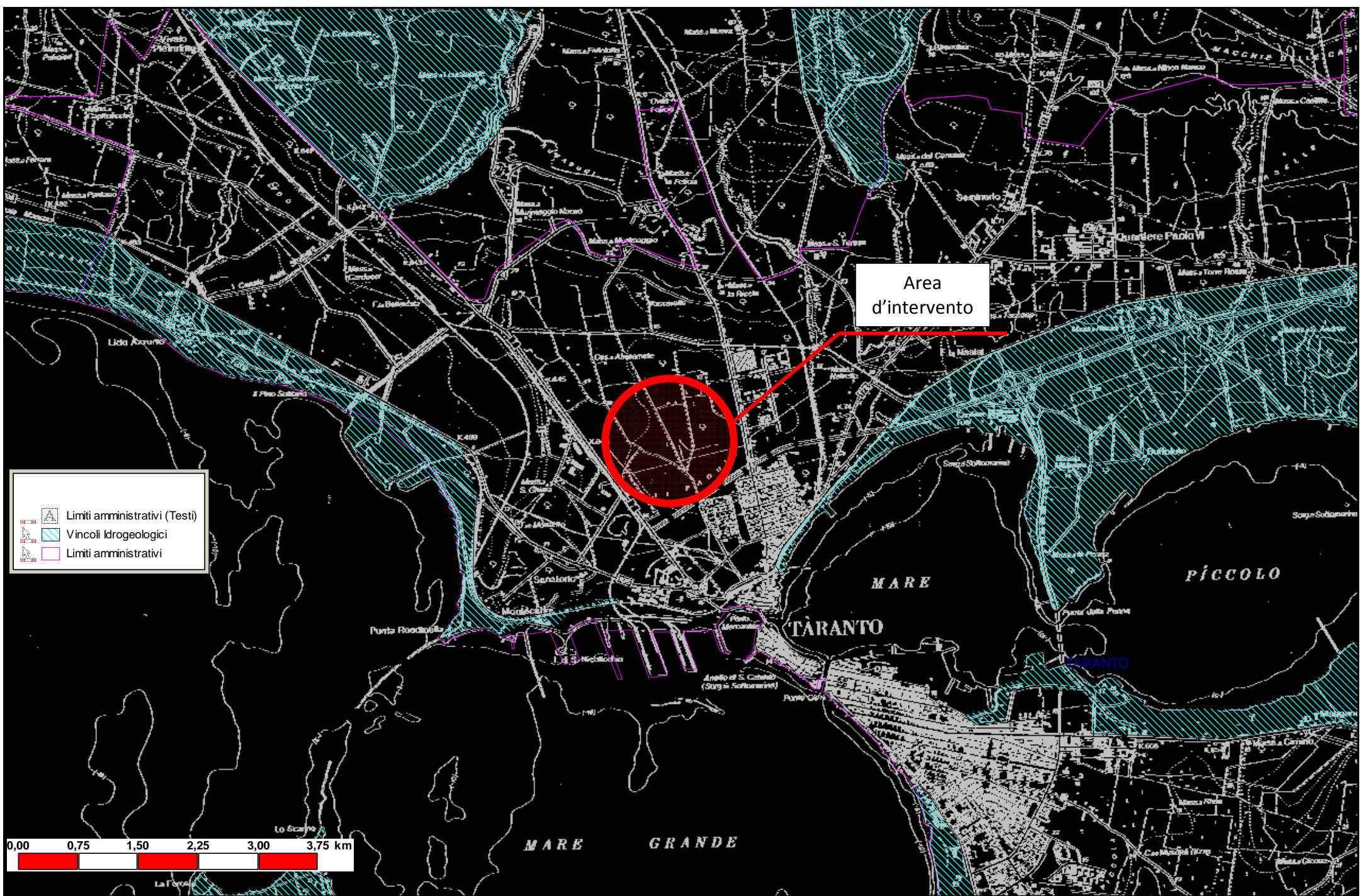
**Vincoli Faunistici**



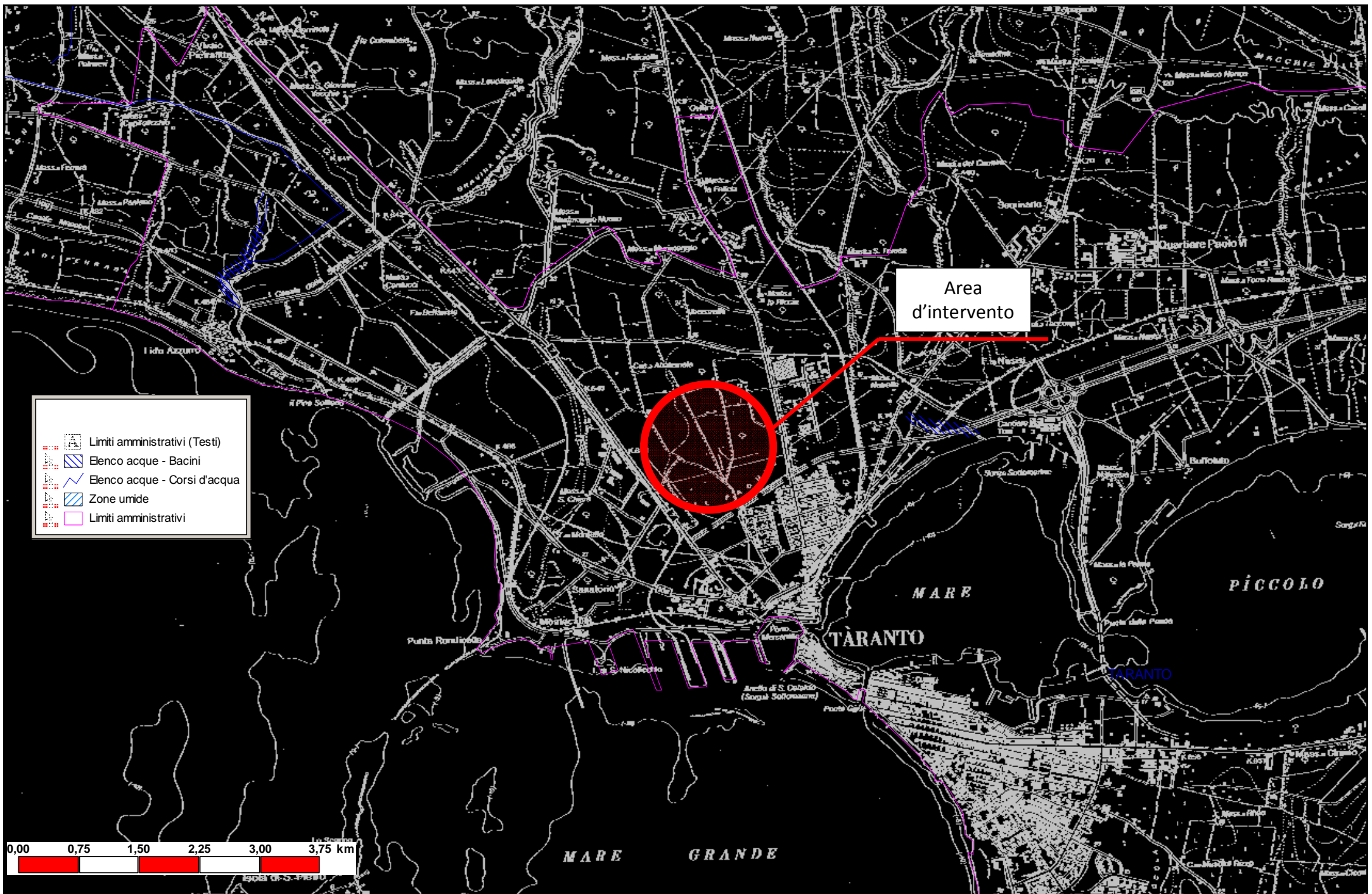
**Vincoli Archeologici - Architettonici**



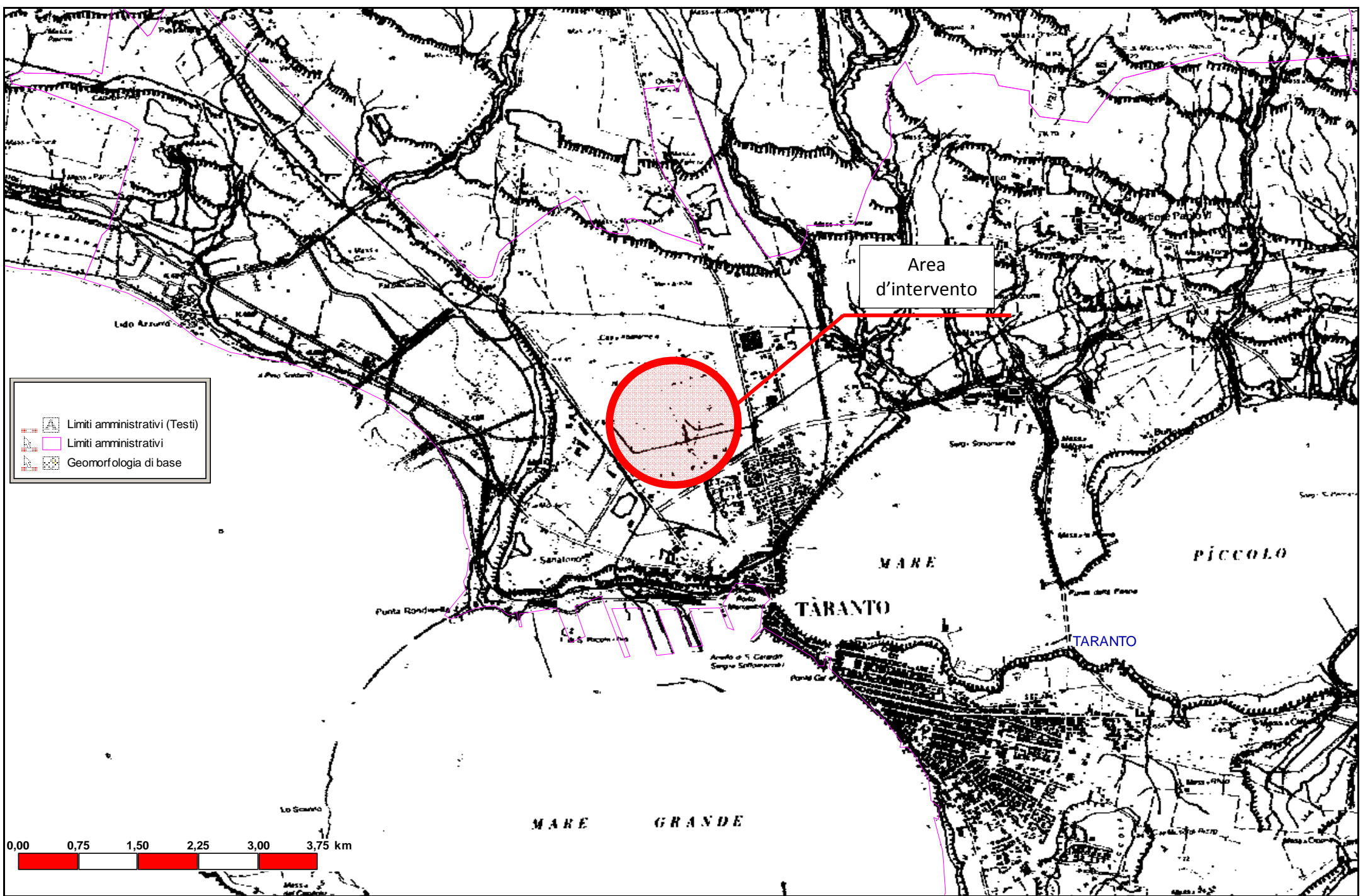
**Catasto Grotte**



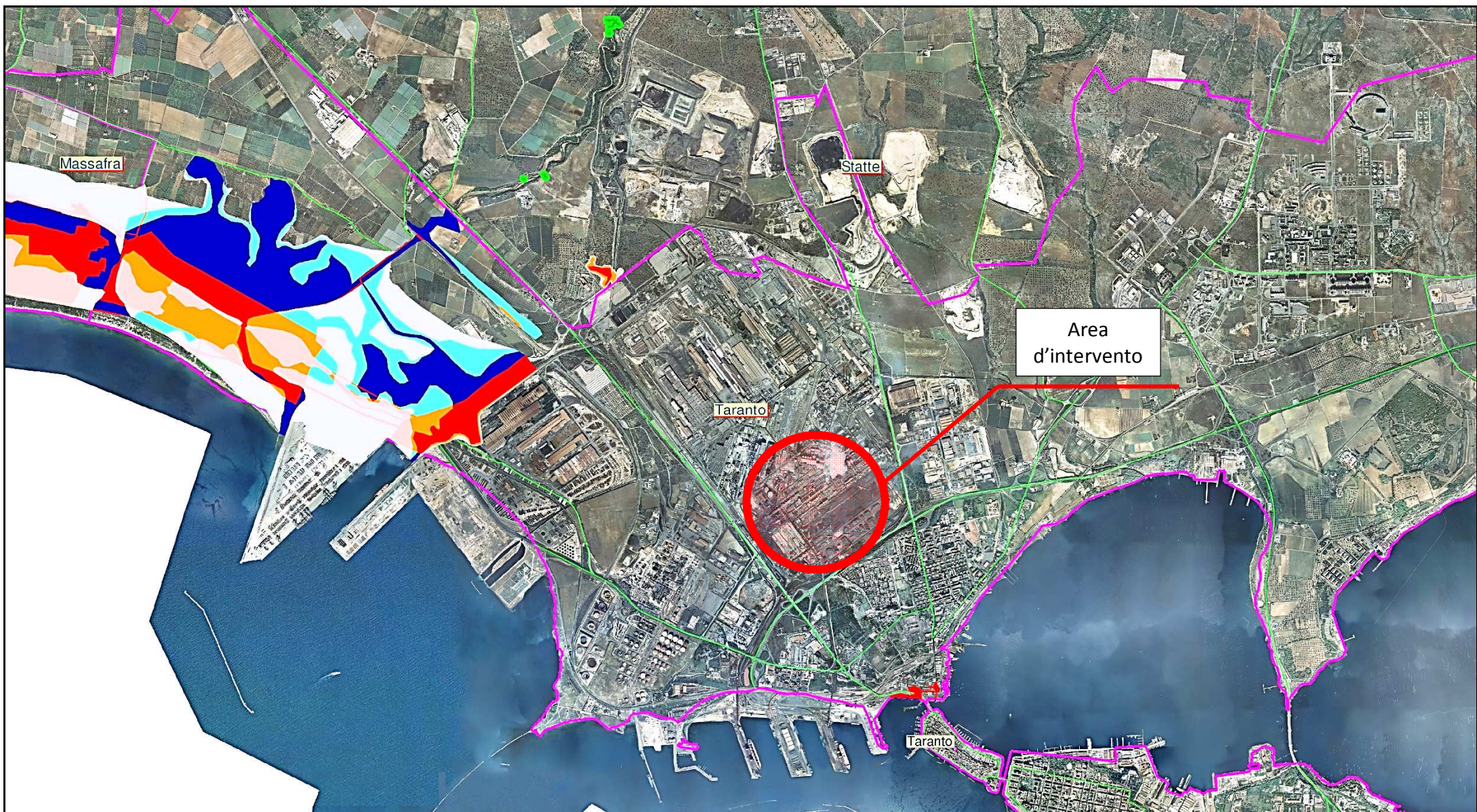
**Vincoli Idrogeologici**



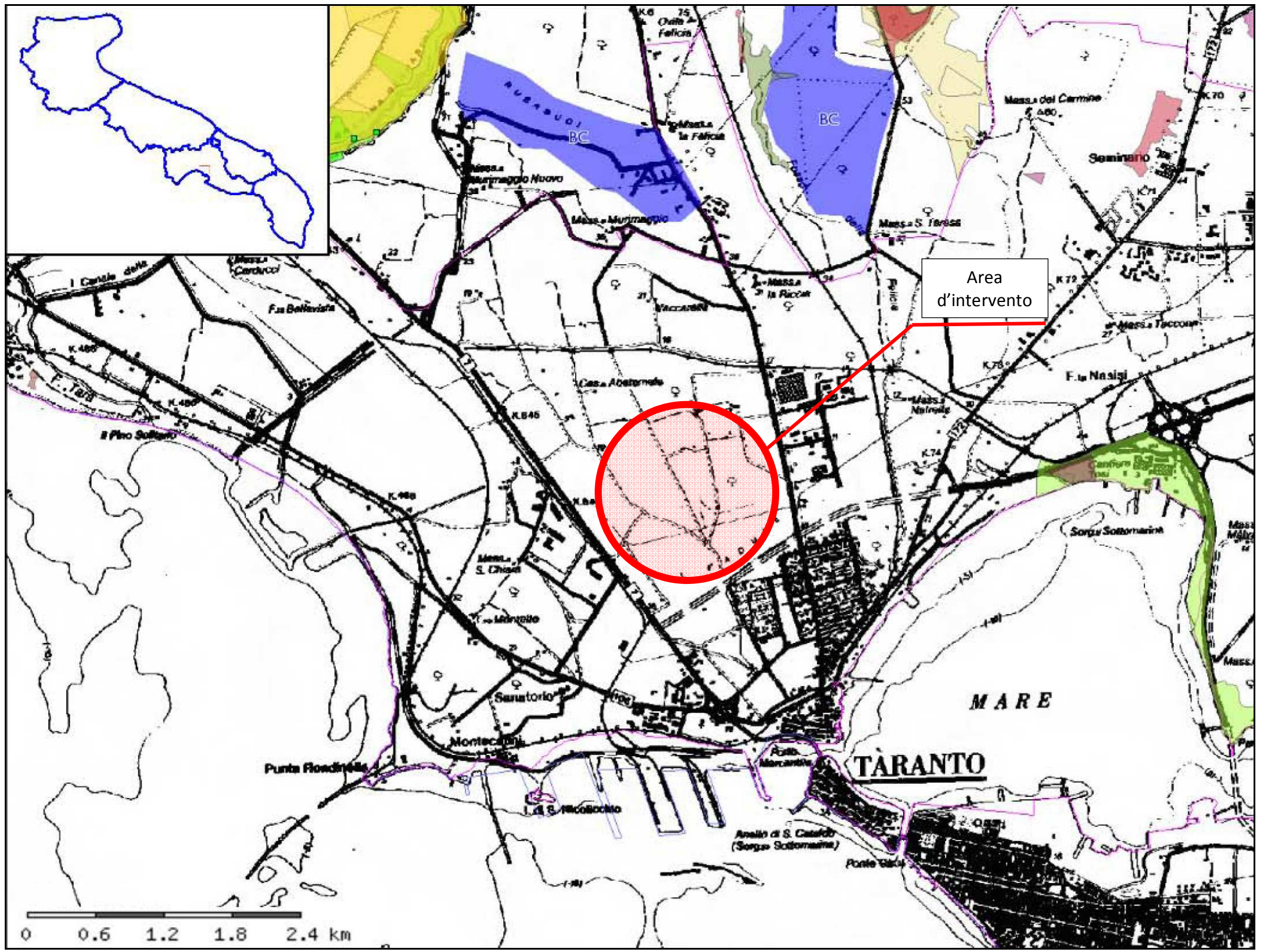
**Idrologia Superficiale**



**Geomorfologia**



**Pericolosità Geomorfologica, Pericolosità Idraulica, Rischio**



**Zone SIC, ZPS e aree PROTETTE**

