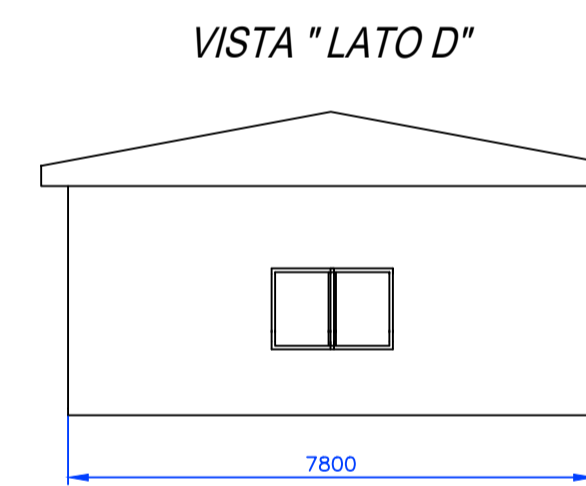
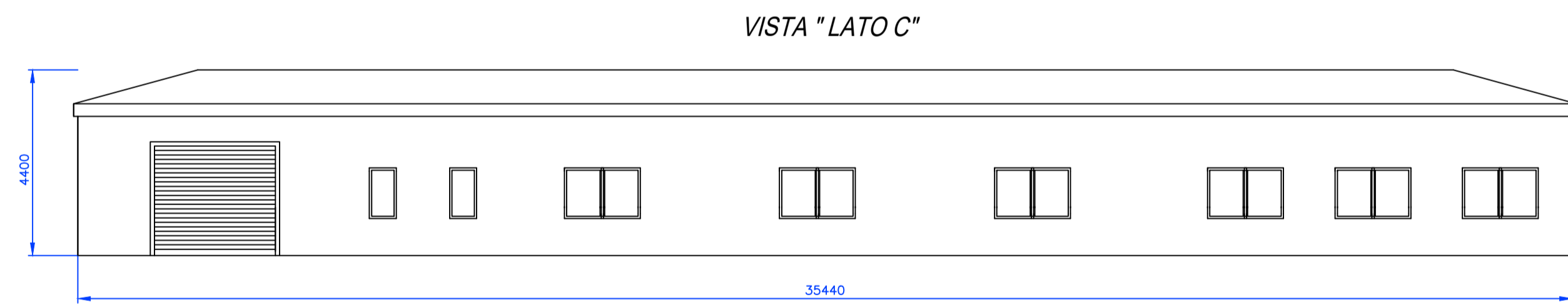
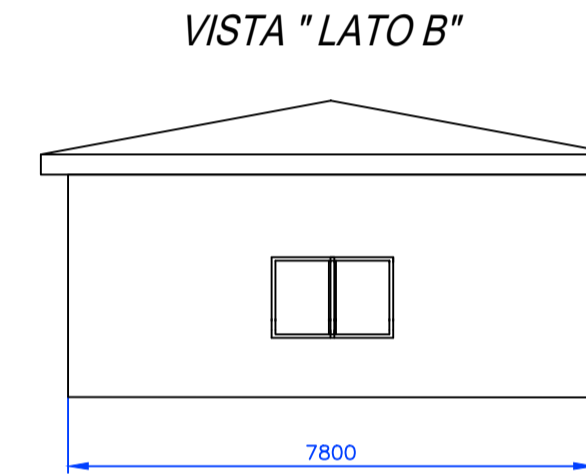
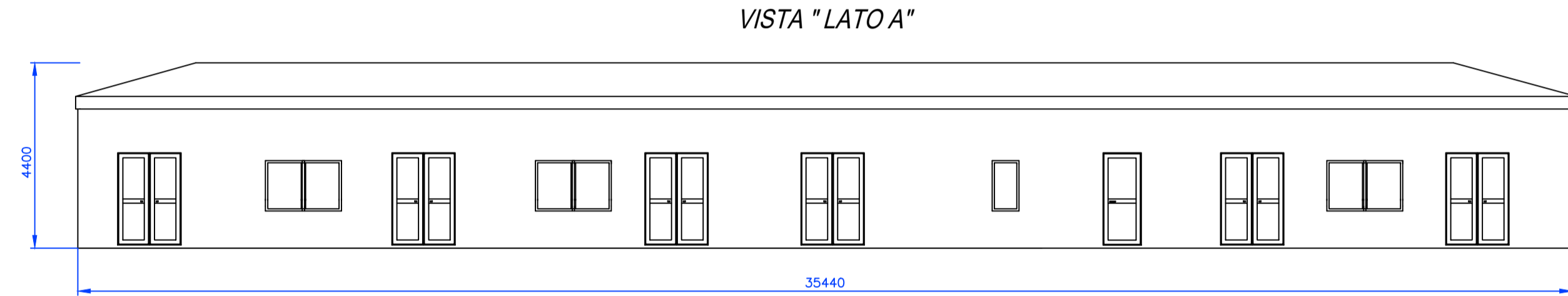
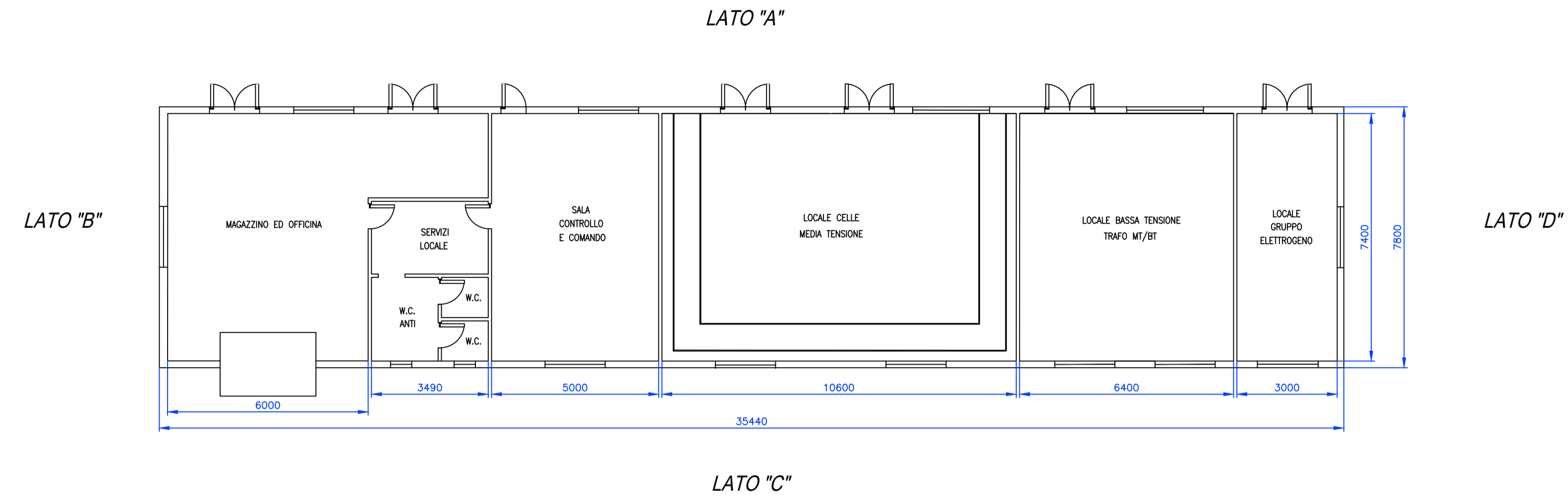
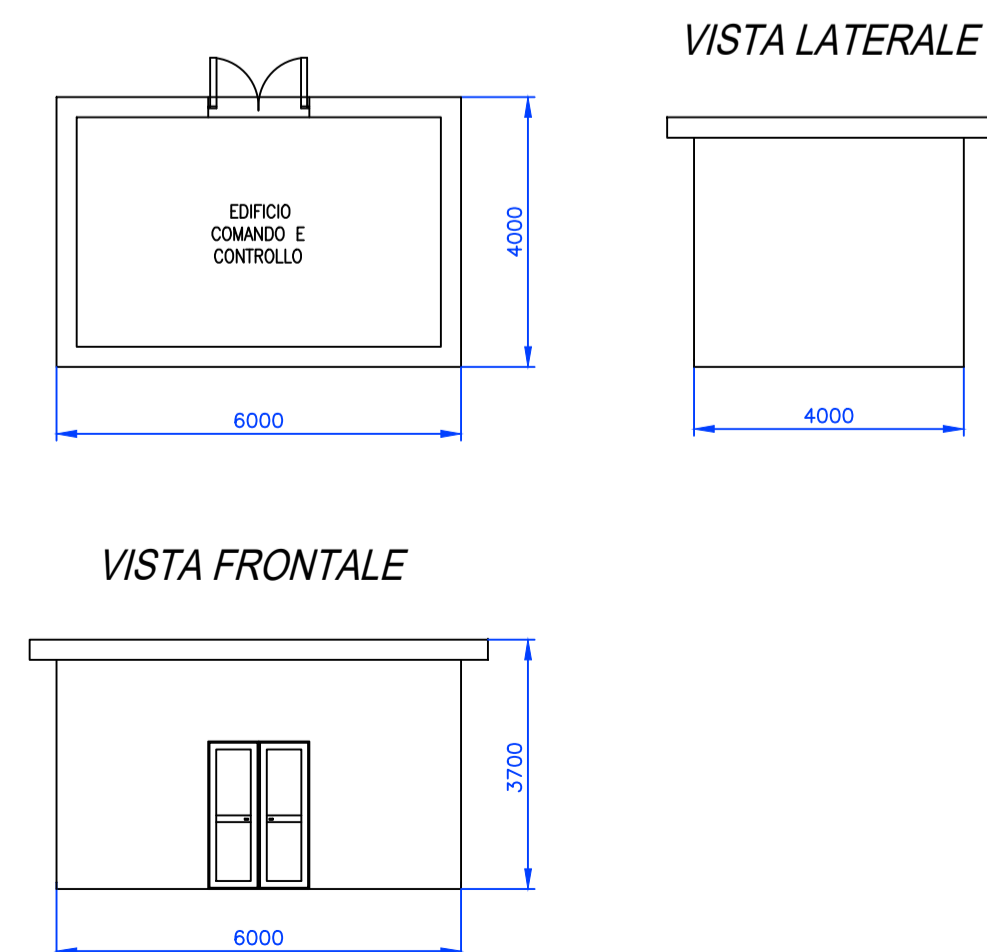


EDIFICIO DI CONTROLLO SET



EDIFICIO STAZIONE DI CONDIVISIONE



Committente: GSMT WIND S.R.L.
Piazza Europa, 14
87100 Cosenza (CS) - Italy
Tel. centralino + 39 0984 408606

Documento: **PROGETTO DEFINITIVO**

Titolo del Progetto: **PARCO EOLICO "MINERVINO"**

Elaborato: **Edificio SET**

PROGETTO	DISCIPLINA	AMBITO	TIPO ELABORATO	PROGRESSIVO	SCALA
E-MIN	E	SE	DT	05	-

NOME FILE: E-MIN-E-SE-DT-05-Edificio SET

Progettazione: **Ing. Raffaele Ciotola**

Rev.	Data Revisione	Descrizione Revisione	Redatto	Controllato	Approvato
00	FEBBRAIO 2024	PRIMA EMISSIONE	CIOTOLA	GEMSA	GSMT