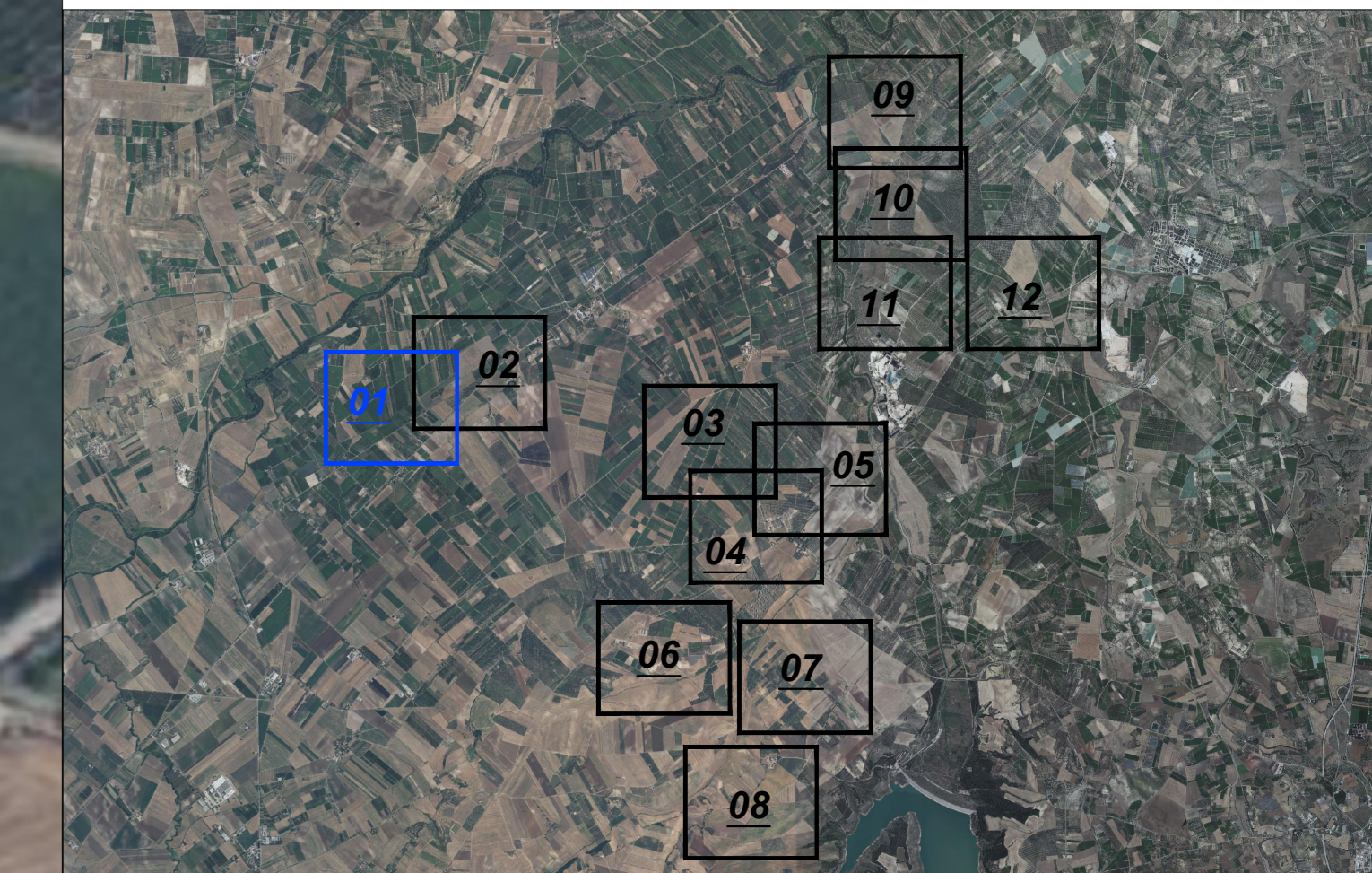


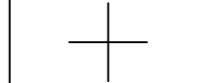


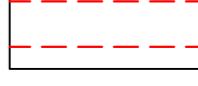
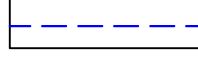
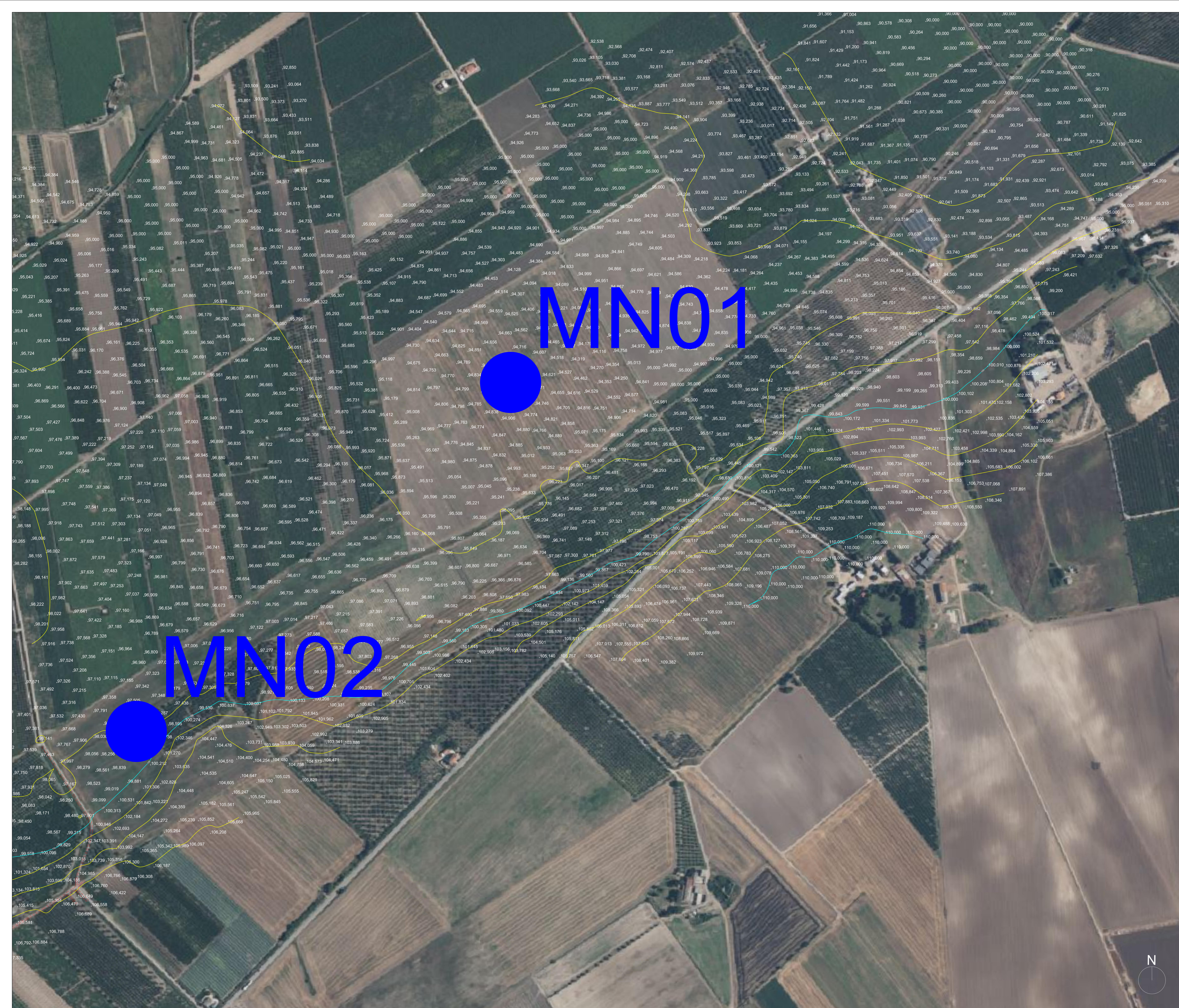





# Key-Map 1:100.000



## Legenda

-  Posizione Aerogeneratori
-  Identificativo Aerogeneratore
-  Punto battuto e relativa quota terreno
-  Curve di livello intervallo 2,00 mt.
-  Curve di livello intervallo 10,00 mt.
-  Strada esistente
-  Fosso esistente



					
Committente: <span style="float: right;">GEMT WIND S.R.L. Piazza Europa 14 87100 Cosenza (CS) - Italy Tel. centralino +39 0984 406008</span>					
<b>DOCUMENTO</b> <b>PROGETTO DEFINITIVO</b>					
<b>TITOLO DEL PROGETTO</b> <b>PARCO EOLICO "MINERVINO"</b>					
<b>ELABORAZIONE</b> <b>Rilievo Topografico</b> <b>Tav. 01</b>					
PROGETTO E-MIN	DISCIPLINA P	AMBITO CP	TIPO ELABORATO PR	PROGRESSIVO 01	SCALA 1:2000
NOME FILE: E-MIN-P-CP-PR-01_Rilievo Topografico - Tav 01					
Progettazione: Ing. Saverio Pagliuso					
					
Ing. Mario Francesco Perri					
Ing. Giorgio Salatino					
Rev.	Data Revisione	Descrizione Revisione	Redatto	Controllato	Approvato
00	FEBBRAIO 2024	PRIMA EMISSIONE	GEMSA	GEMSA	