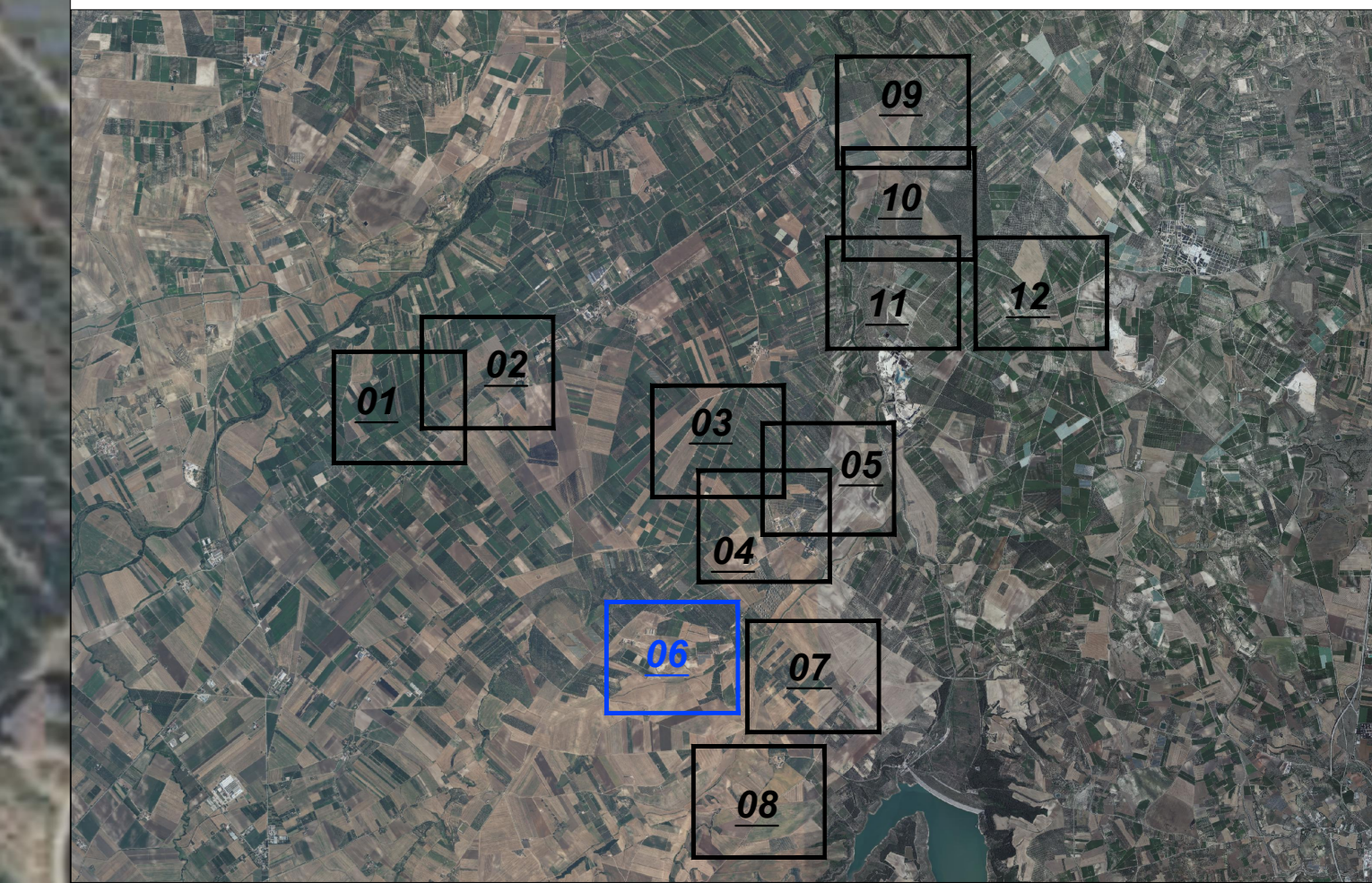
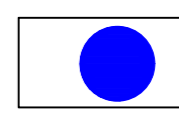

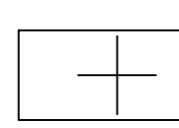

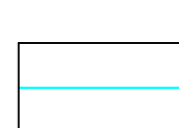
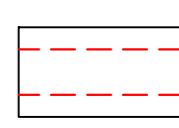
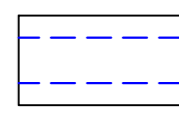
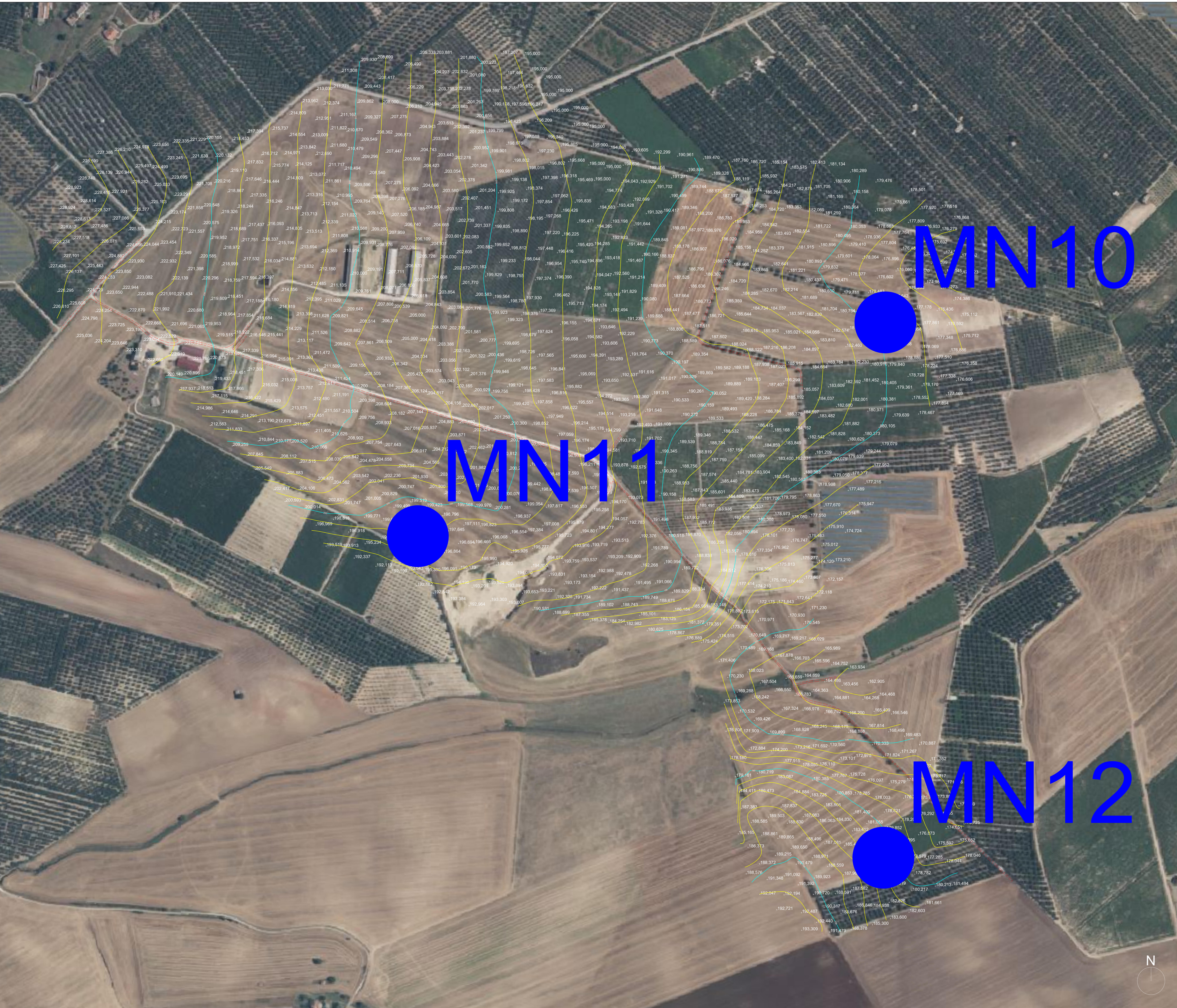


Key-Map 1:100.000



Legenda

-  Posizione Aerogeneratori
-  Identificativo Aerogeneratore
-  Punto battuto e relativa quota terreno
-  Curve di livello intervallo 2,00 mt.
-  Curve di livello intervallo 10,00 mt.
-  Strada esistente
-  Fosso esistente





Regione Puglia



Provincia di Andria-Barletta-Trani

Comittente: **GSM T WIND S.R.L.**
Piazza Europa, 14
87100 Cosenza (CS) - Italy
Tel. centralino +39 0984 406006

Documento: **PROGETTO DEFINITIVO**

Titolo del Progetto: **PARCO EOLICO "MINERVINO"**

Elaborato: **Rilievo Topografico Tav. 06**

PROGETTO	DISCIPLINA	AMBITO	TIPO ELABORATO	PROGRESSIVO	SCALA
E-MIN	P	CP	PR	06	1:2000

Nome File: **E-MIN-P-CP-PR-06 Rilievo Topografico - Tav 06**

Progettazione:

-  Ing. Saverio Pagliuso
- Ing. Mario Francesco Perri
- Ing. Giorgio Salatino

Rev.	Data Revisione	Descrizione Revisione	Redatto	Controllato	Approvato
00	FEBBRAIO 2024	PRIMA EMISSIONE	GEMSA	GEMSA	