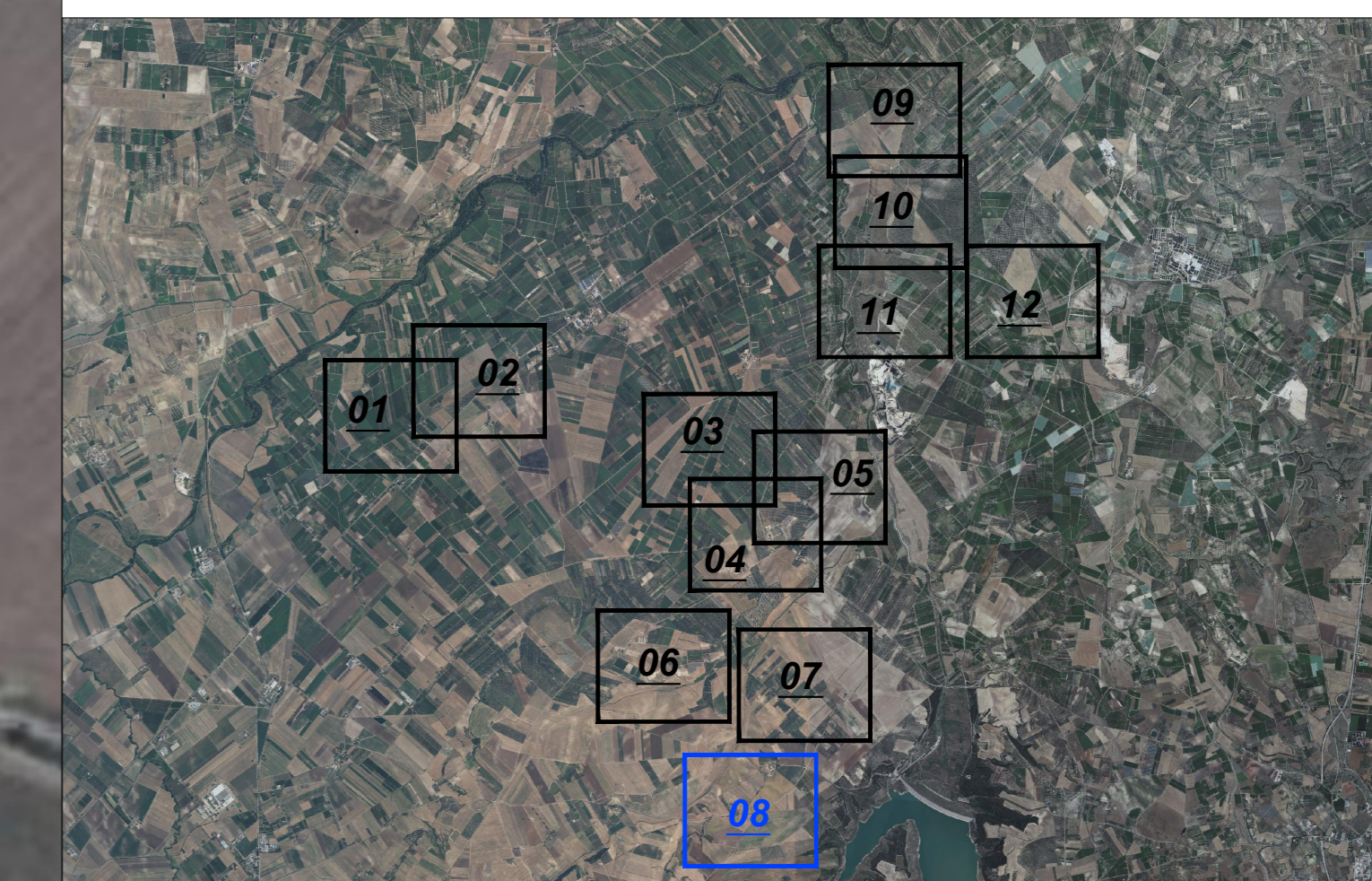


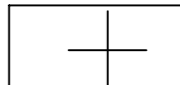

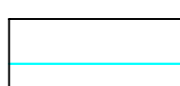
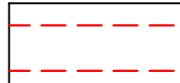
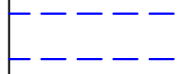


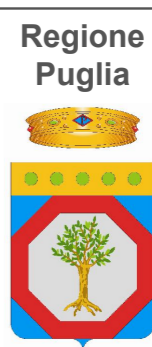

Key-Map 1:100.000



Legenda

-  Posizione Aerogeneratori
-  Identificativo Aerogeneratore
-  Punto battuto e relativa quota terreno
-  Curve di livello intervallo 2,00 mt.
-  Curve di livello intervallo 10,00 mt.
-  Strada esistente
-  Fosso esistente



					
Comittente:		GEMT WIND S.R.L. Piazza Europa, 14 87100 Cosenza (CS) - Italy Tel. centralino +39 0984 408608			
Documento:		PROGETTO DEFINITIVO			
Titolo del Progetto:		PARCO EOLICO "MINERVINO"			
Elaborato:		Rilievo Topografico Tav. 08			
PROGETTO	DISCIPLINA	AMBITO	TIPO ELABORATO	PROGRESSIVO	SCALA
E-MIN	P	CP	PR	08	1:2000
NOME FILE:		E-MIN-P-CP-PR-08_Rilievo Topografico - Tav 08			
Progettazione:		Ing. Saverio Pagliuso  Ing. Mario Francesco Perri Ing. Giorgio Salatino			
Rev.	Data Revisione	Descrizione Revisione	Redatto	Controllato	Approvato
00	FEBBRAIO 2024	PRIMA EMISSIONE	GEMSA	GEMSA	

