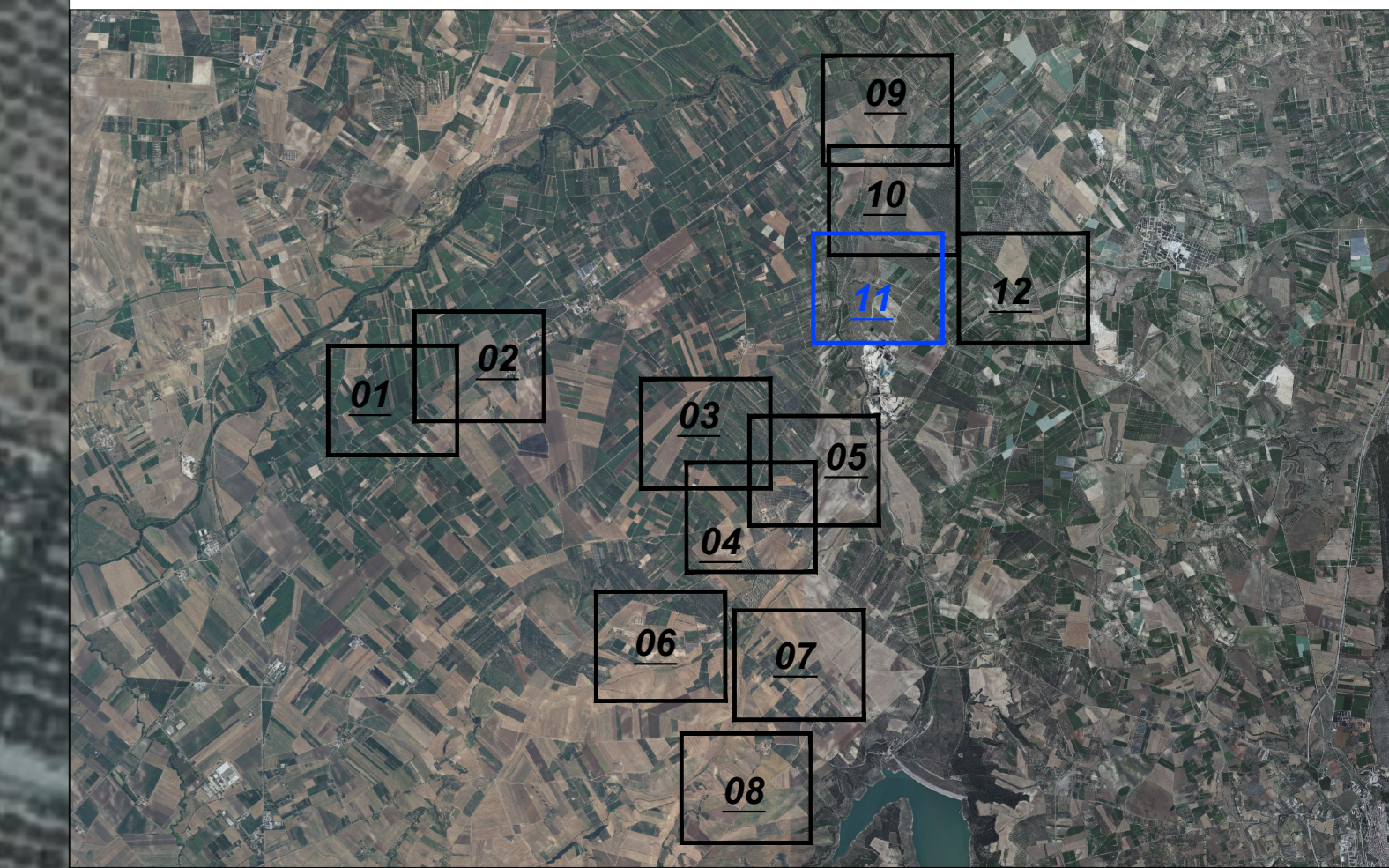
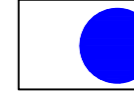

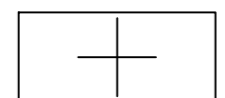

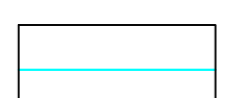
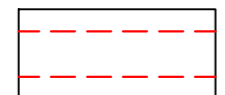
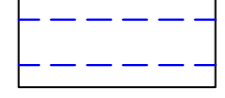
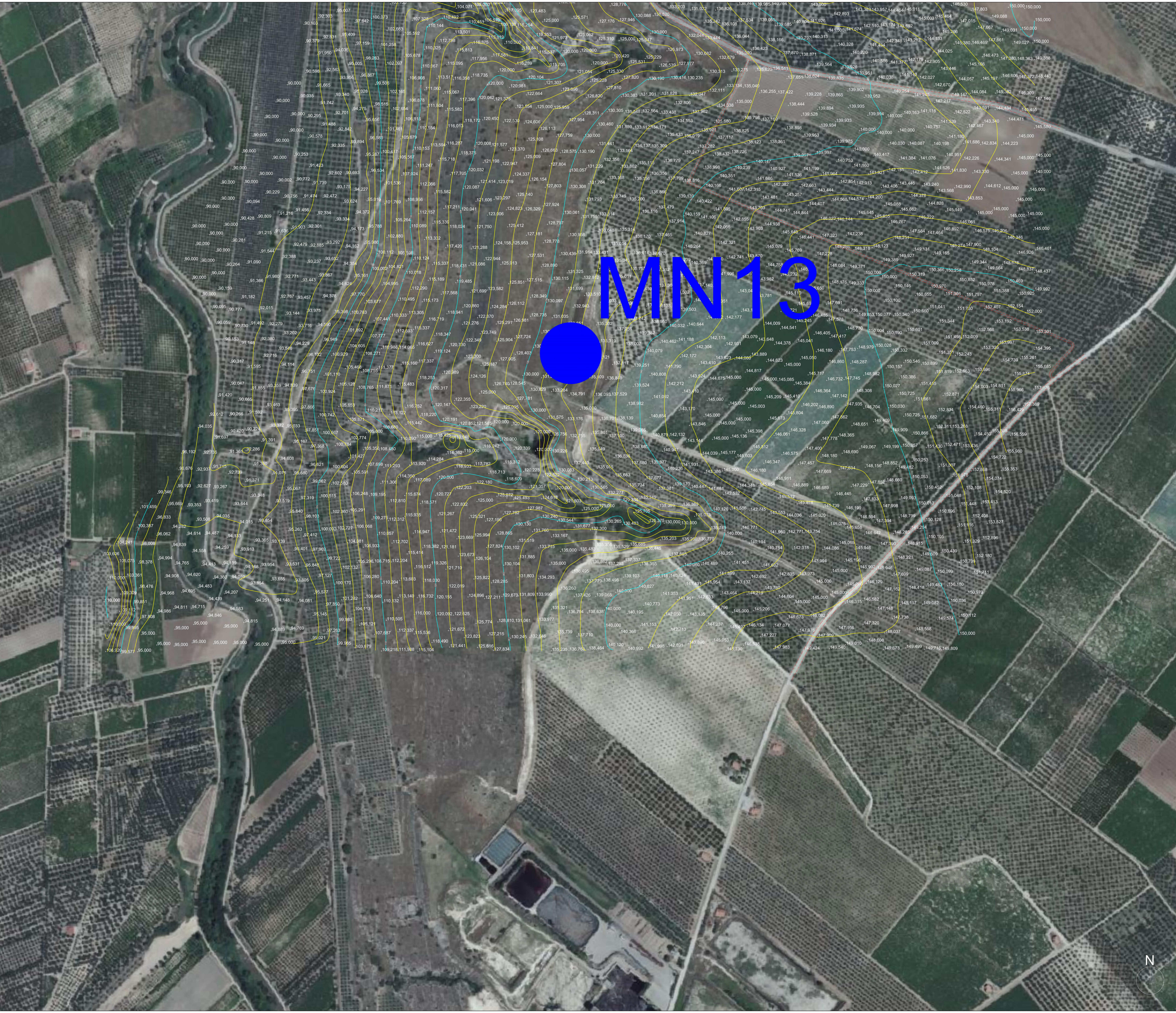


Key-Map 1:100.000



Legenda

-  Posizione Aerogeneratori
-  Identificativo Aerogeneratore
-  Punto battuto e relativa quota terreno
-  Curve di livello intervallo 2,00 mt.
-  Curve di livello intervallo 10,00 mt.
-  Strada esistente
-  Fosso esistente



					
Commenti: GSMI WIND S.R.L. Piazza Europa 14 87100 Cosentino (CS) - Italy Tel. centralino +39 0984 406005					
Documento: PROGETTO DEFINITIVO					
Titolo del Progetto: PARCO EOLICO "MINERVINO"					
Elaborato: Rilievo Topografico Tav. 11					
PROGETTO	DISCIPLINA	AMBITO	TIPO ELABORATO	PROGRESSIVO	SCALA
E-MIN	P	CP	PR	11	1:2000
NOME FILE: E-MIN-P-CP-PR-11_Rilievo Topografico - Tav 11		Progettazione: Ing. Saverio Pagliuso			
		Ing. Mario Francesco Perri			
		Ing. Giorgio Salatino			
Rev.	Data Revisione	Descrizione Revisione	Redatto	Controllato	Approvato
00	FEBBRAIO 2024	PRIMA EMISSIONE	GEMSA	GEMSA	