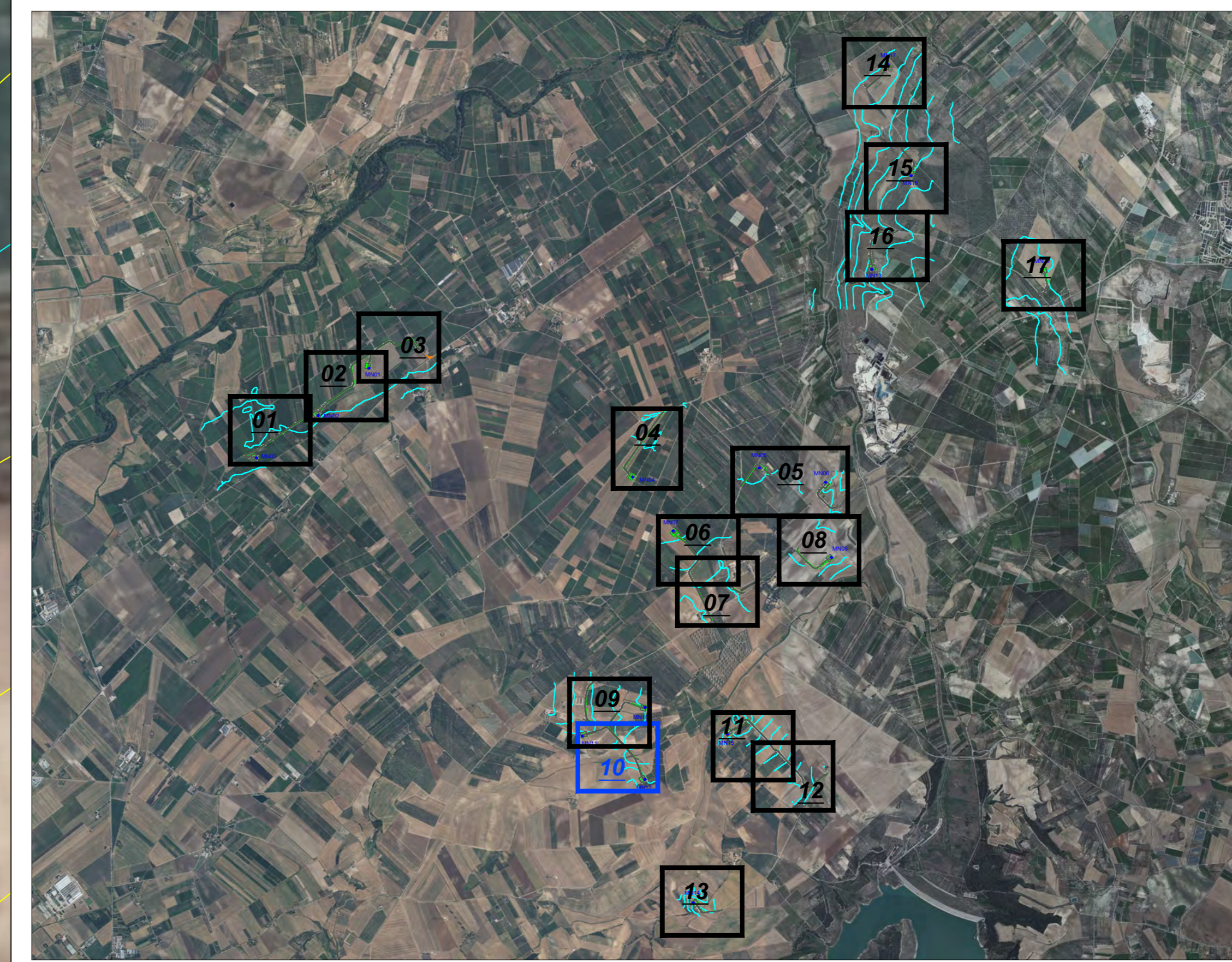
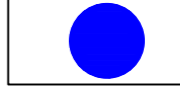




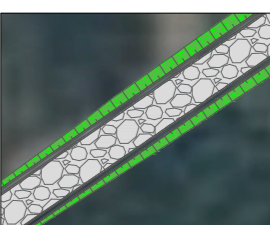
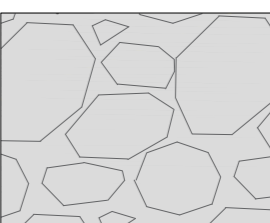
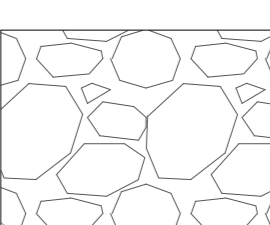



Key-Map 1:50.000



Legenda

-  Posizione Aerogeneratori
-  Identificativo Aerogeneratore
-  Scavo provvisorio
-  Curve di livello 10.00 mt
-  Curve di livello 2.00 mt
-  Interventi Puntuali
-  Nuova Viabilità
-  Viabilità in Adeguamento
-  Aree a misto stabilizzato Nuova Viabilità
-  Aree a misto stabilizzato Viabilità in Adeguamento
-  Aree rinverdite

MN11

MN12



					
Commento:		GEMT WIND S.R.L. Piazza Europa, 14 87100 Cossenza (CS) - Italy Tel. centralino +39 0984 408605			
Documento: PROGETTO DEFINITIVO					
Titolo del Progetto: PARCO EOLICO "MINERVINO"					
Elaborato: Planimetria di Progetto Tav. 10					
PROGETTO	DISCIPLINA	AMBITO	TIPO ELABORATO	PROGRESSIVO	SCALA
E-MIN	P	VB	PP	10	1:1000
NOME FILE: E-MIN-P-VB-PP-10_Planimetria di Progetto - Tav 10					
Progettazione:					
 Ing. Saverio Pagliuso Ing. Mario Francesco Perri Ing. Giorgio Salatino					
Rev:	Data Revisione	Descrizione Revisione	Redatto	Controllato	Approvato
00	FEBBRAIO 2024	PRIMA EMISSIONE	GEMSA	GEMSA	