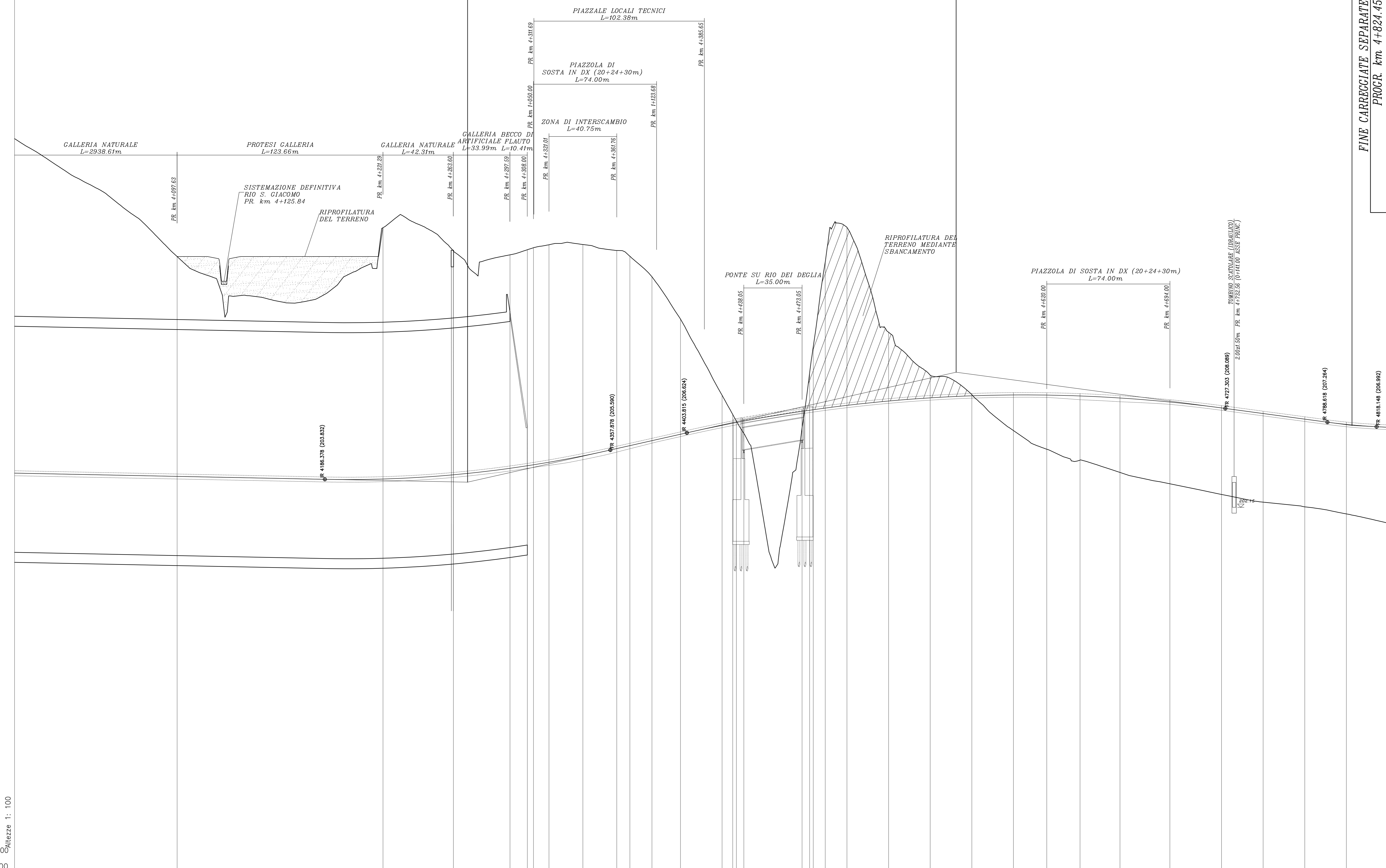


Prog=	4272.128
Quota=	203.681
R =	7000.000
T1 =	85.750
T2 =	85.772
Sw =	171.500

Prog=	4565.559
Quota=	210.263
R =	9000.000
T1 =	161.785
T2 =	161.759
Sw =	323.488

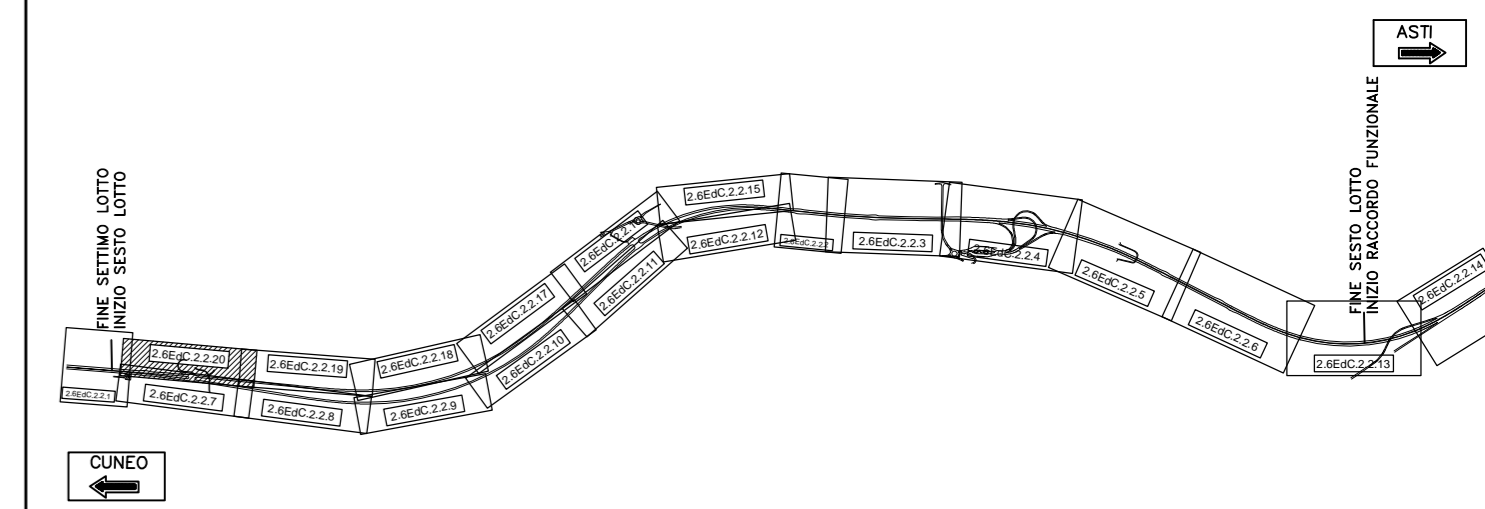
Prog=	4803.583
Quota=	207.056
R =	3500.000
T1 =	14.766
T2 =	14.765
Sw =	29.530

Prog=	4824.450
Quota=	206.992



FINE CARRACCIATE SEPARATE
PROGR. km. 4+824.45

QUADRO D'UNIONE



Lunghezze 1: 1000
O.RIF. 180.000

No. SEZIONI	GCN-18	GCN-19	GCN-20	GCN-22	CN-117	CN-118	CN-119	CN-121	CN-122	CN-123	CN-127	CN-128	CN-131	CN-132	CN-133	CN-134	CN-135	CN-136	CN-137	CN-138	CN-139	CN-140	CN-141	CN-142	CN-143	CN-144	
DISTANZE PROGRESSIVE	609.15	422.19	426.10	437.19	436.15	431.19	431.19	432.10	440.00	443.00	443.00	443.00	443.00	443.00	443.00	443.00	443.00	443.00	443.00	443.00	443.00	443.00	443.00	443.00	443.00	443.00	
DISTANZE PARZIALI	100.15	123.66	42.31	33.99	10.41	9.31	20.37	20.37	7.86	13.25	17.14	25.00	6.33	35.00	7.20	13.04	25.00	25.00	25.00	20.00	20.00	24.00	30.00	31.00	25.00	25.00	24.45
QUOTE TERRENO	204.15	203.85	204.10	204.49	204.49	204.49	204.49	204.49	204.49	204.49	204.49	204.49	204.49	204.49	204.49	204.49	204.49	204.49	204.49	204.49	204.49	204.49	204.49	204.49	204.49	204.49	204.49
QUOTE PROGETTO	204.15	203.85	204.10	204.49	204.49	204.49	204.49	204.49	204.49	204.49	204.49	204.49	204.49	204.49	204.49	204.49	204.49	204.49	204.49	204.49	204.49	204.49	204.49	204.49	204.49	204.49	204.49
CIGLIO DESTRO	204.15	203.85	204.10	204.49	204.49	204.49	204.49	204.49	204.49	204.49	204.49	204.49	204.49	204.49	204.49	204.49	204.49	204.49	204.49	204.49	204.49	204.49	204.49	204.49	204.49	204.49	204.49
CIGLIO SINISTRO	204.15	203.85	204.10	204.49	204.49	204.49	204.49	204.49	204.49	204.49	204.49	204.49	204.49	204.49	204.49	204.49	204.49	204.49	204.49	204.49	204.49	204.49	204.49	204.49	204.49	204.49	204.49
ETTOMETRICHE	40	41	42	43	44	45	46	47	48	49	50	51	52	53	54	55	56	57	58	59	60	61	62	63	64	65	
ANDAMENTO PLANIMETRICO	L=651.28																										
ANDAMENTO DEI CIGLI	L=208.19 R=10250.50																										

AUTOSTRADA ASTI - CUNEO S.p.A.



**COLLEGAMENTO AUTOSTRADALE
ASTI - CUNEO**
TRONCO II A21 (ASTI EST) - A6 (MARENE)
LOTTO 6 RODDI - DIGA ENEL
VERIFICA DI ASSOGGETTABILITA' EX ART. 20 D.LGS. 152/06
STRALCIO DEL PROGETTO ESECUTIVO
PROGETTO DELL'INFRASTRUTTURA

OPERE INFRASTRUTTURALI
ASSE PRINCIPALE
PROFILO LONGITUDINALE CARREGGIATA DIREZIONE CUNEO DA PROG. 4+000 A PROG. 4+824.45
TAVOLA 20

Approvato:	26	27	28	29	30	31	32	33	34	35	36	37	38	39	40	41	42	43	44	45	46	47	48	49	50	51	52	53	54	55	56	57	58	59	60	61	62	63	64	65	66	67	68	69	70	71	72	73	74	75	76	77	78	79	80	81	82	83	84	85	86	87	88	89	90	91	92	93	94	95	96	97	98	99	100
Emesso:	26	27	28	29	30	31	32	33	34	35	36	37	38	39	40	41	42	43	44	45	46	47	48	49	50	51	52	53	54	55	56	57	58	59	60	61	62	63	64	65	66	67	68	69	70	71	72	73	74	75	76	77	78	79	80	81	82	83	84	85	86	87	88	89	90	91	92	93	94	95	96	97	98	99	100
Approvato:	26	27	28	29	30	31	32	33	34	35	36	37	38	39	40	41	42	43	44	45	46	47	48	49	50	51	52	53	54	55	56	57	58	59	60	61	62	63	64	65	66	67	68	69	70	71	72	73	74	75	76	77	78	79	80	81	82	83	84	85	86	87	88	89	90	91	92	93	94	95	96	97	98	99	100
Emesso:	26	27	28	29	30	31	32	33	34	35	36	37	38	39	40	41	42	43	44	45	46	47	48	49	50	51	52	53	54	55	56	57	58	59	60	61	62	63	64	65	66	67	68	69	70	71	72	73	74	75	76	77	78	79	80	81	82	83	84	85	86	87	88	89	90	91	92	93	94	95	96	97	98	99	100

PROGETTISTA e RESP. INTEGRAZIONE PRESTAZIONI SPECIALISTICHE:
SINA
Dot. Ing. Enrico Ghislandi
Albo di Milano
N° A/10993

CONCESSIONARIA:
AUTOSTRADA ASTI - CUNEO S.p.A.