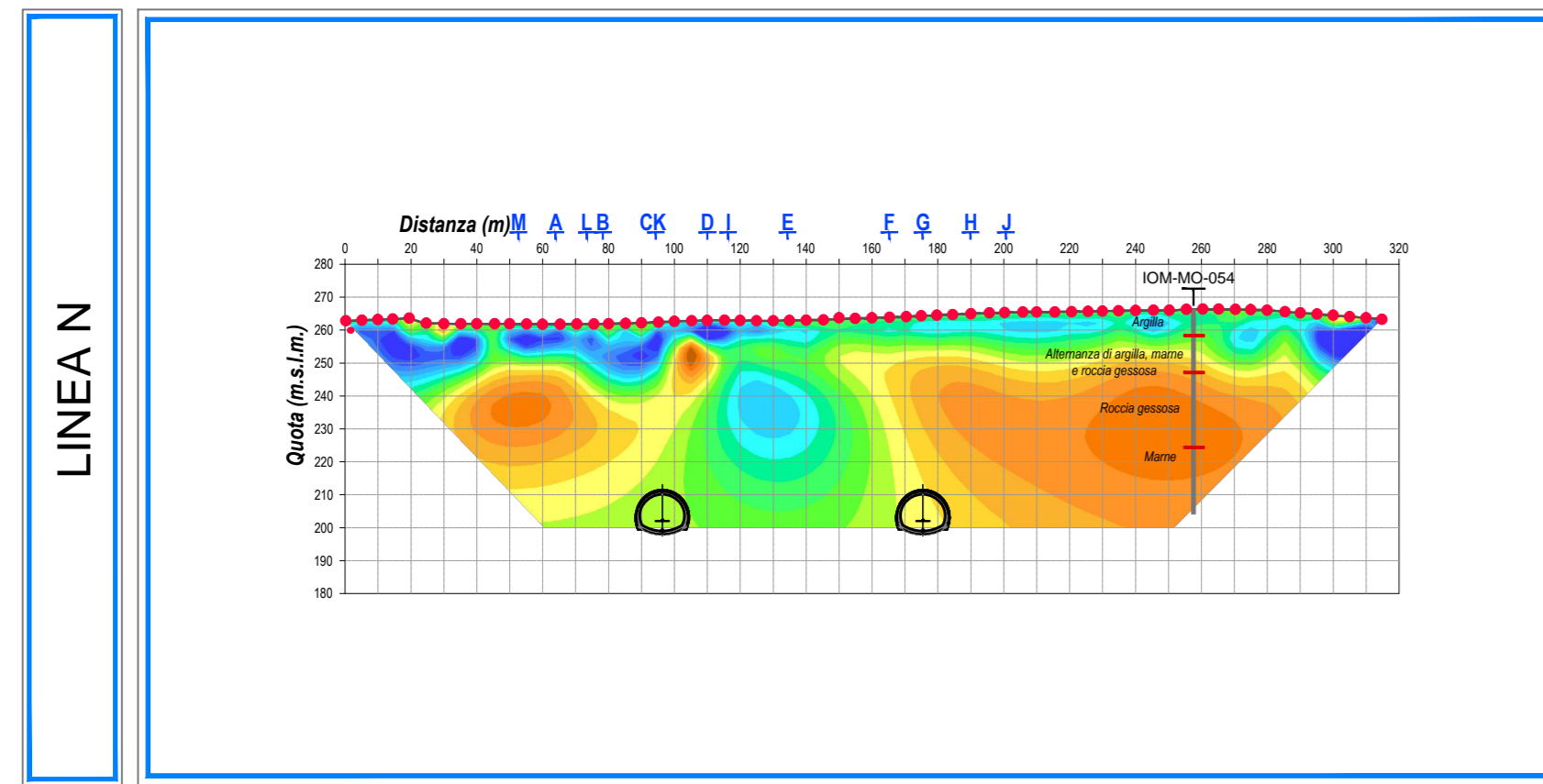
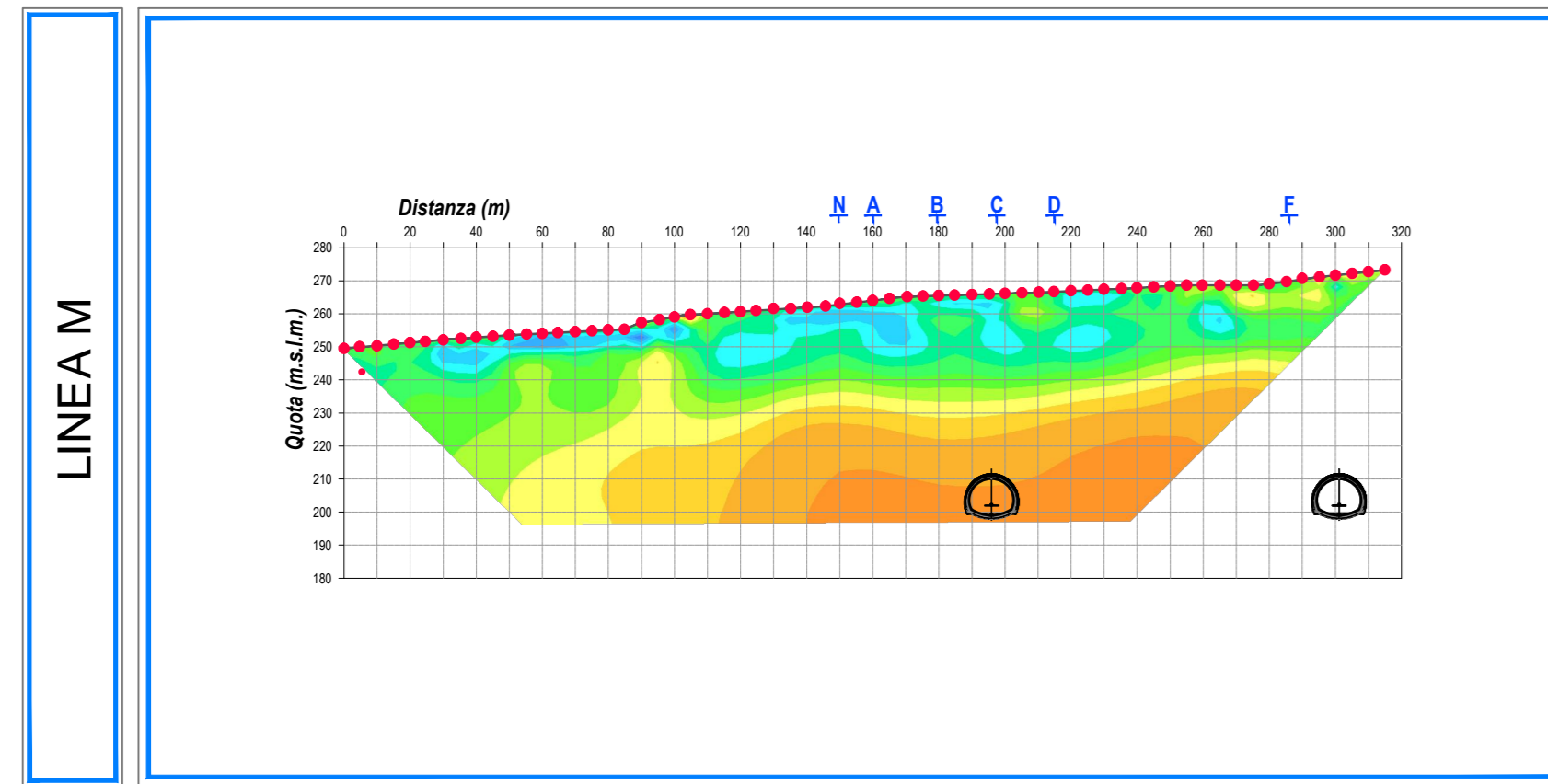
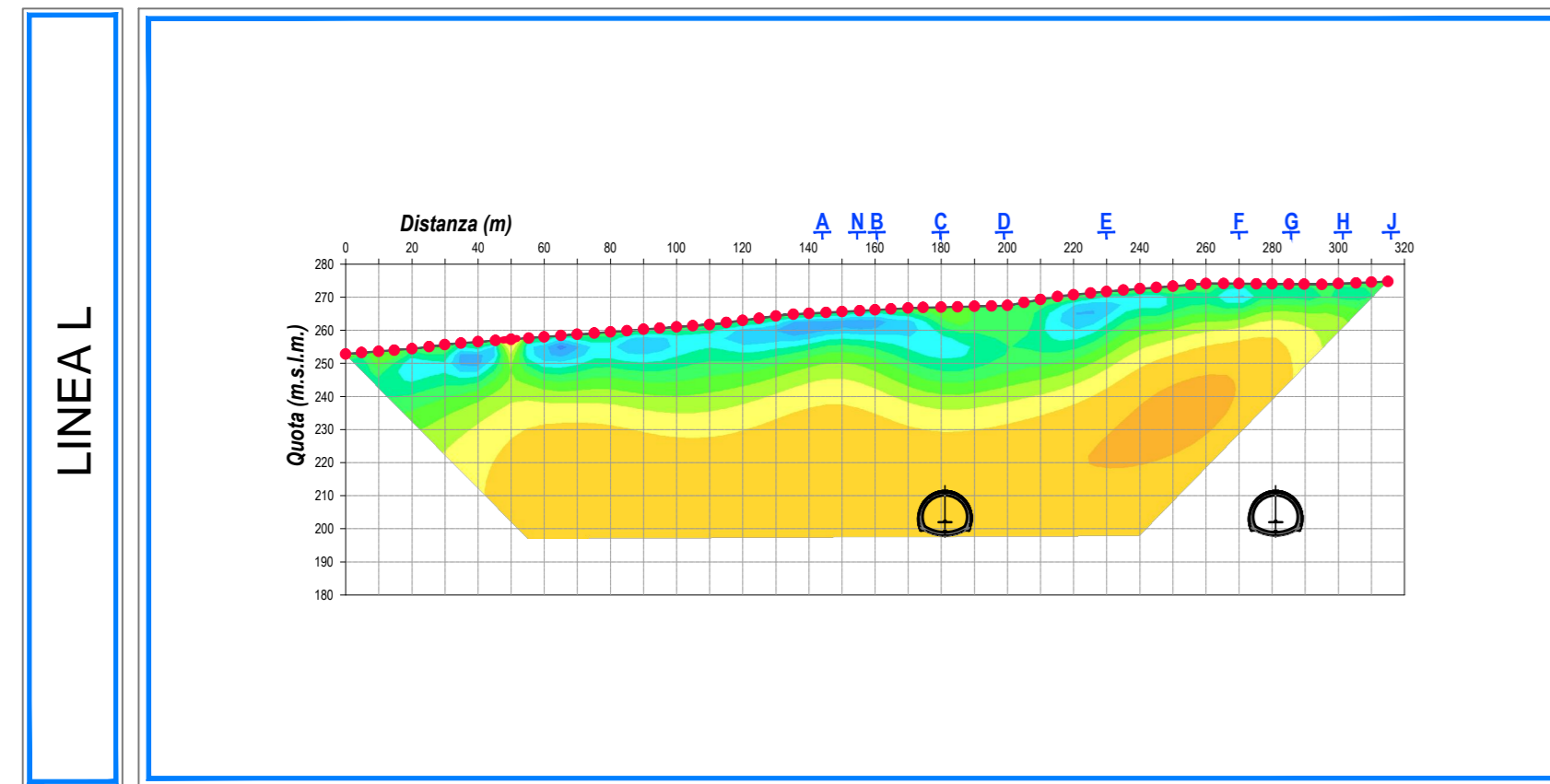
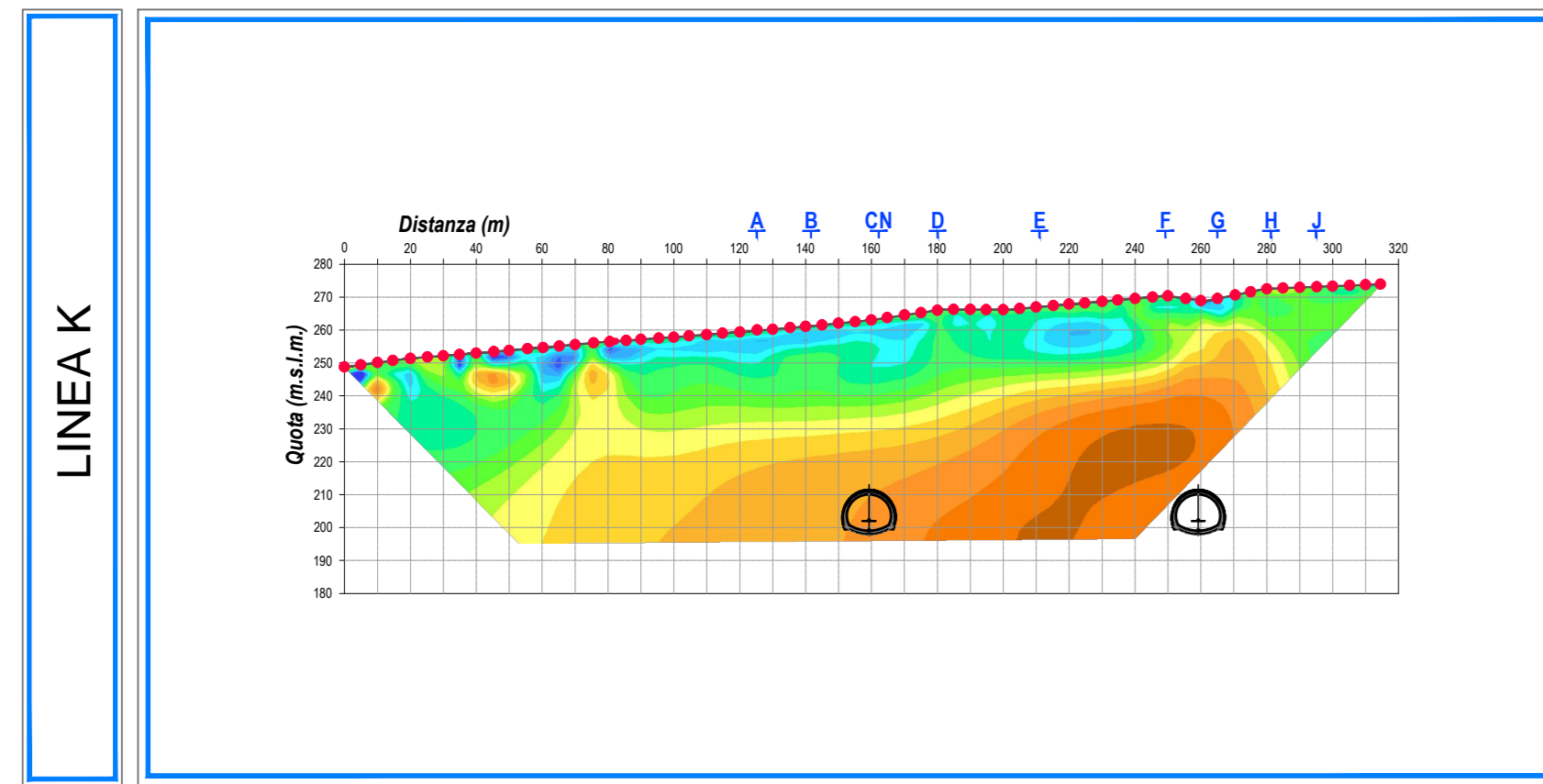
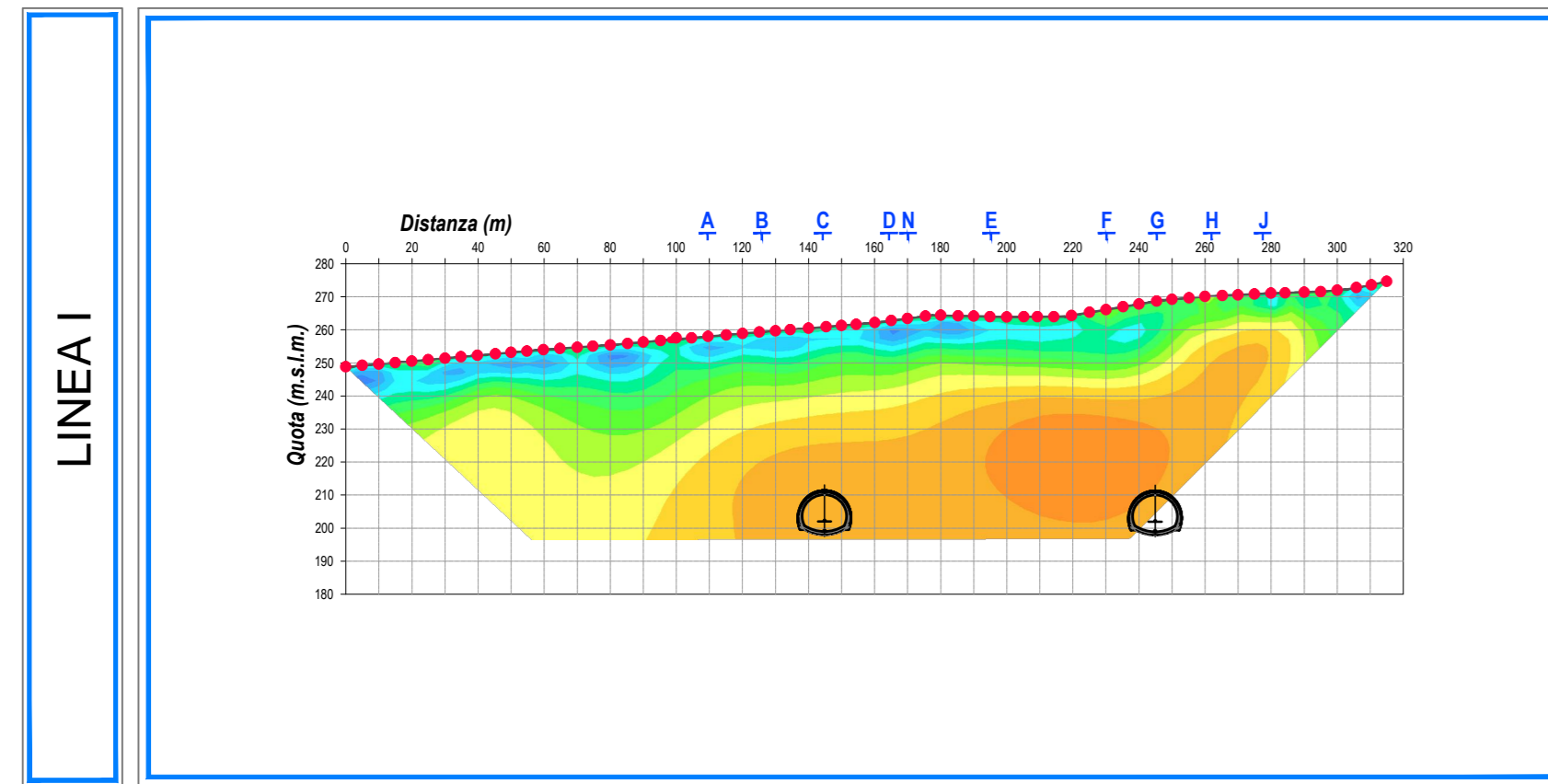
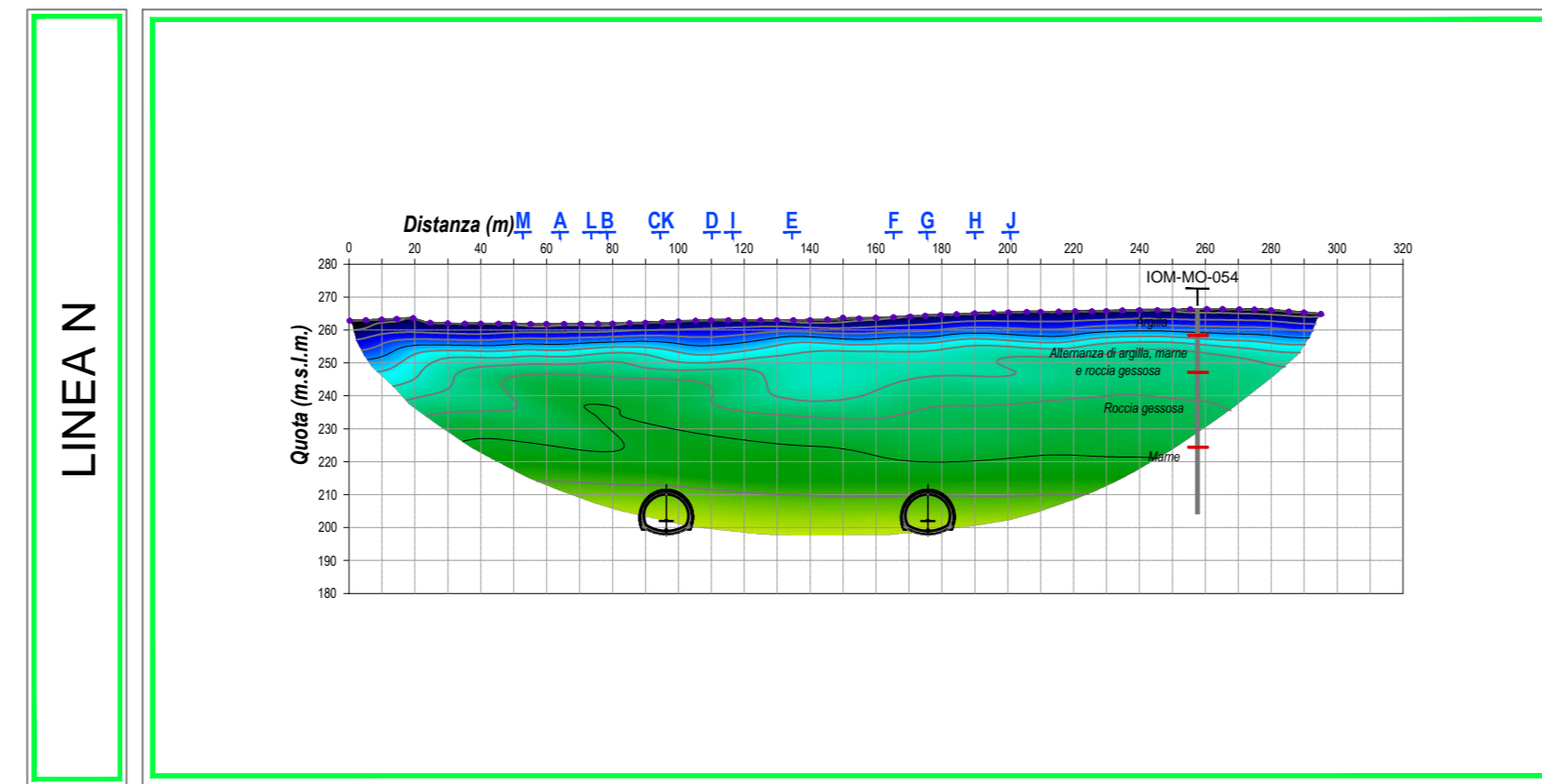
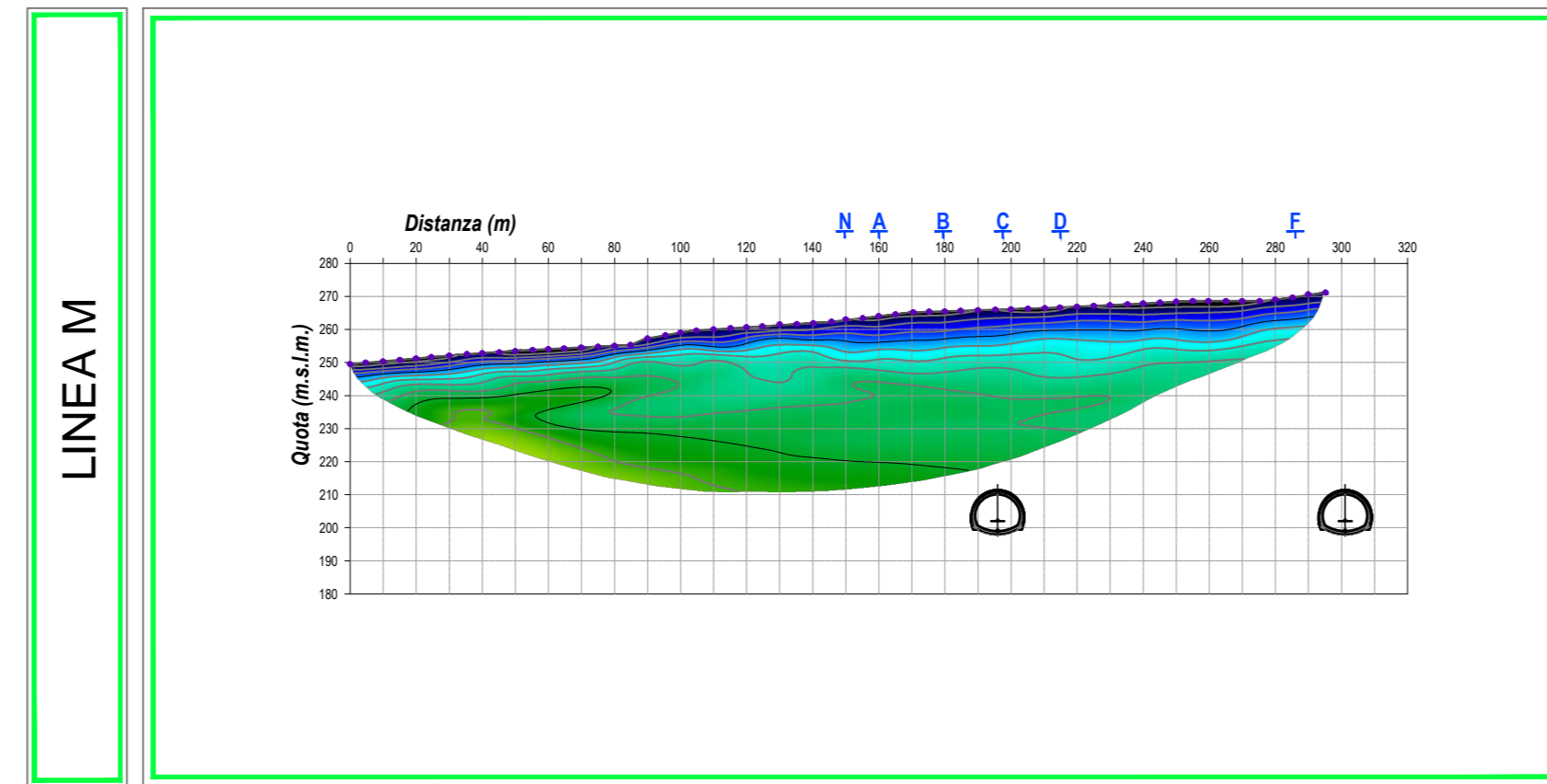
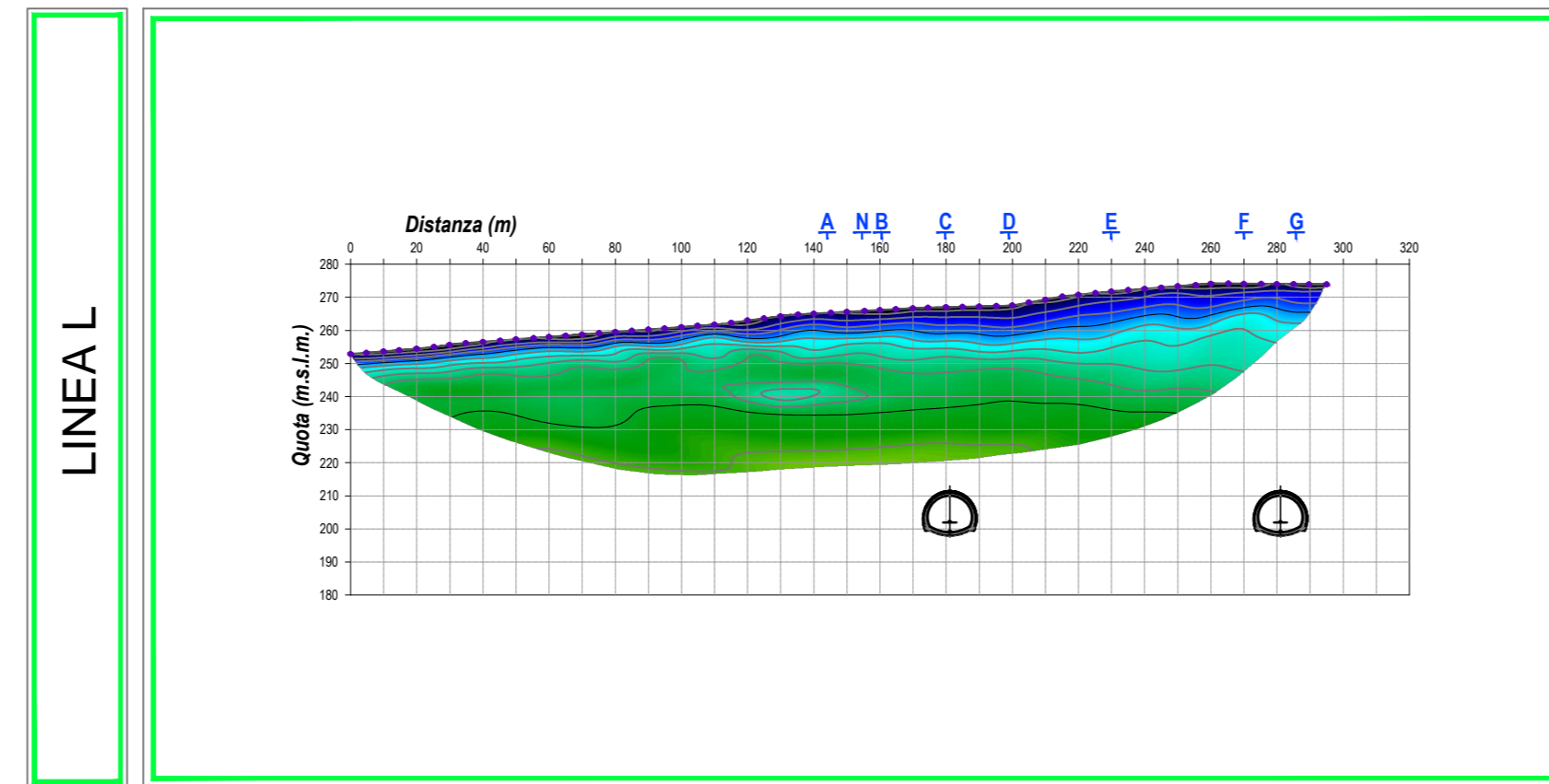
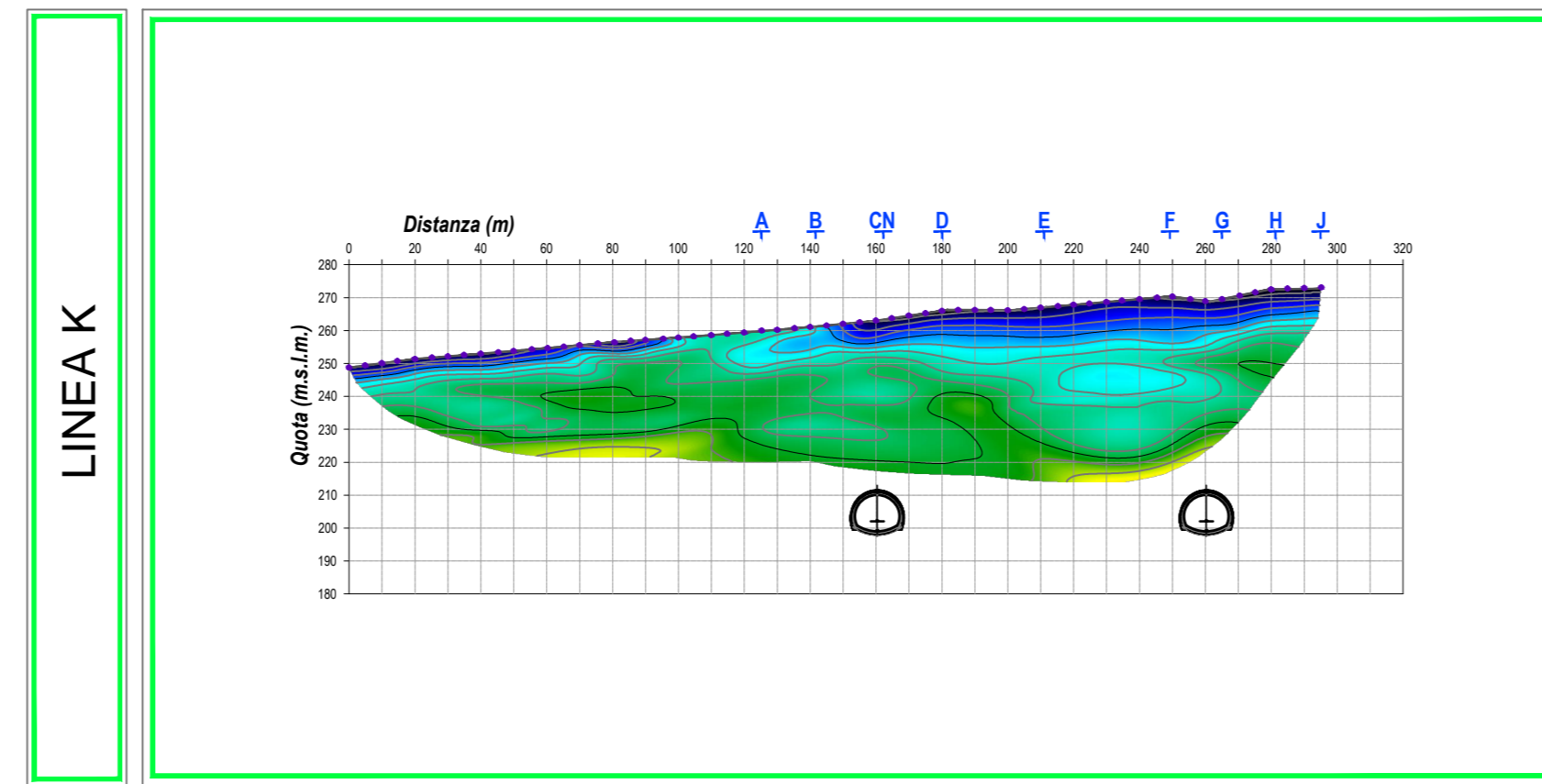
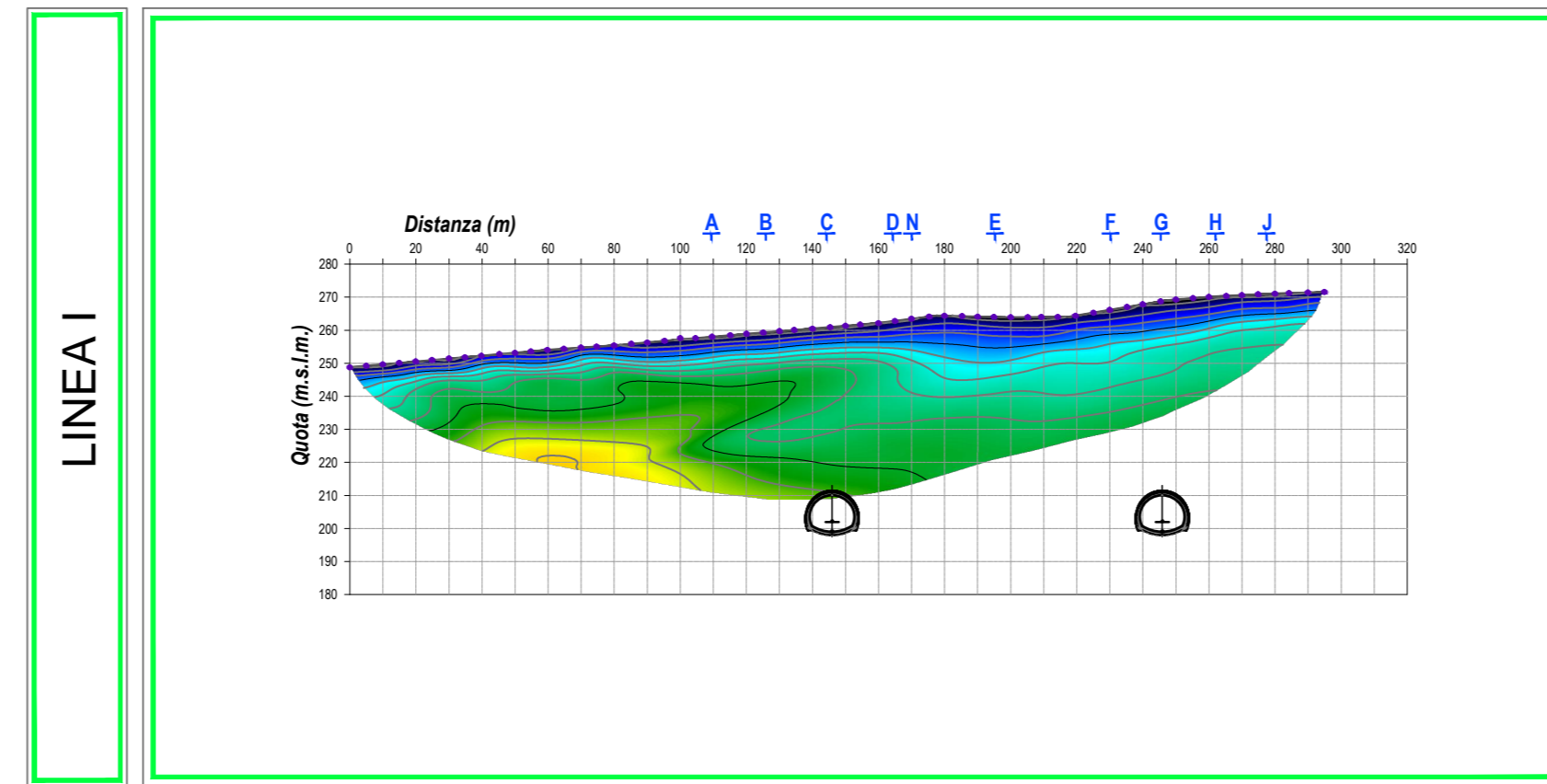


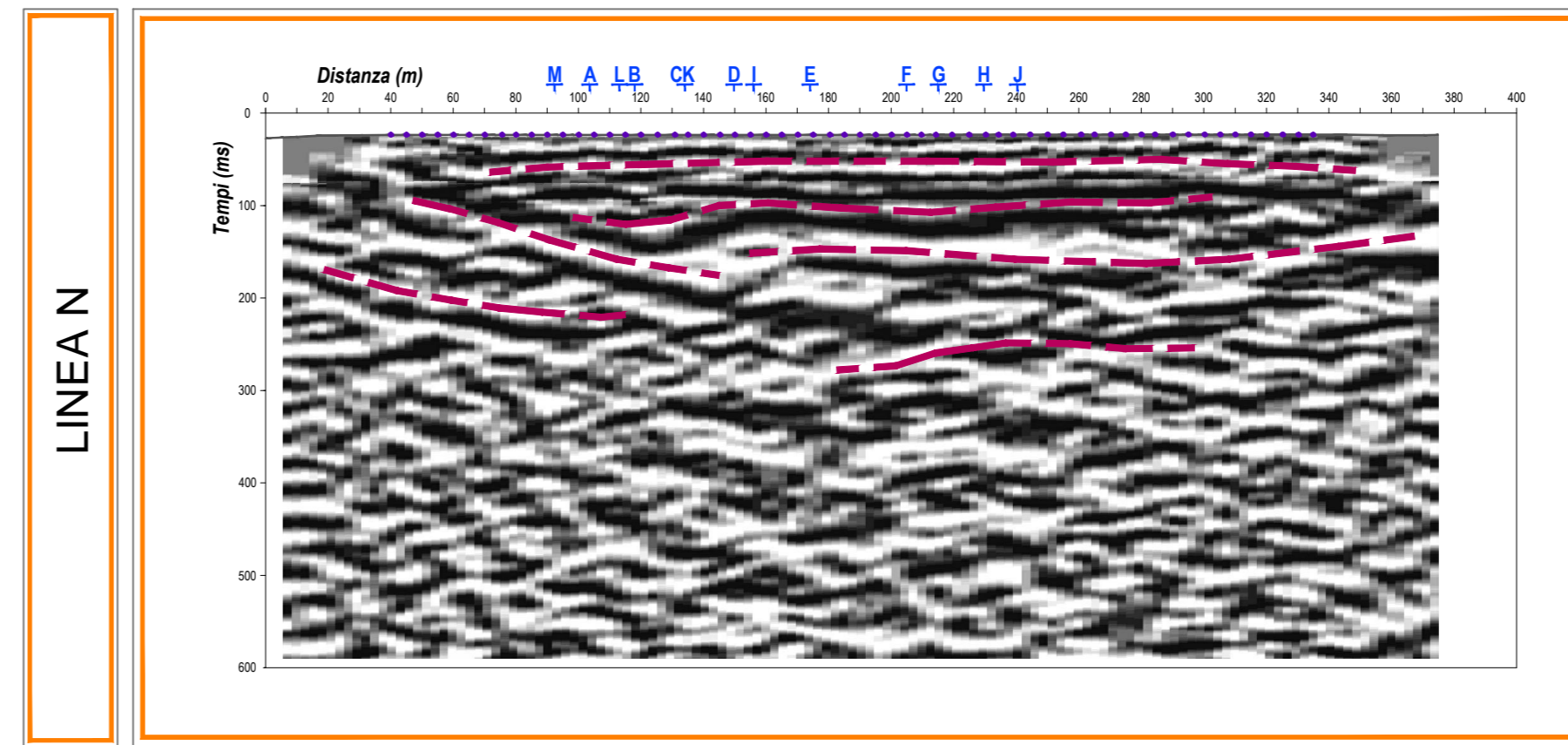
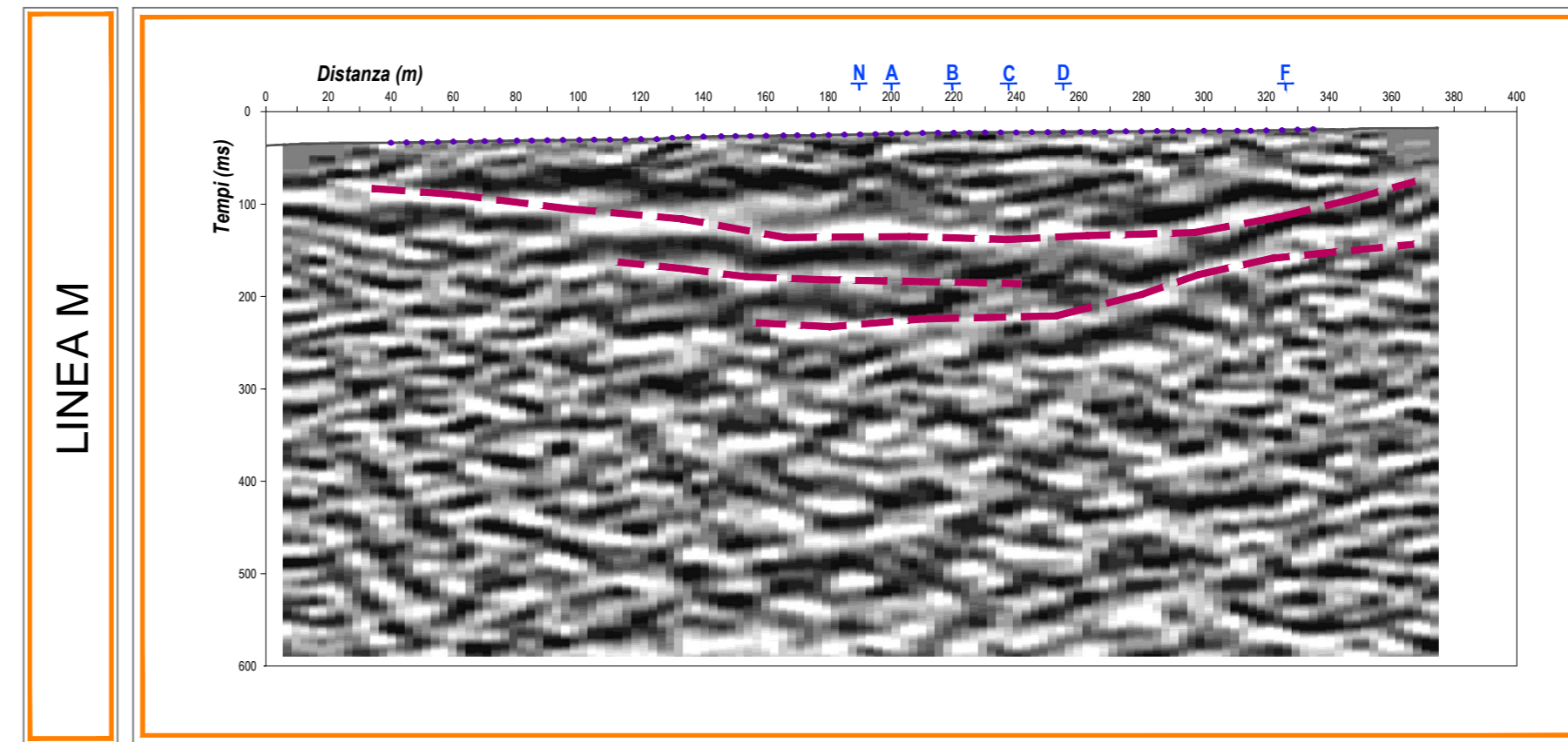
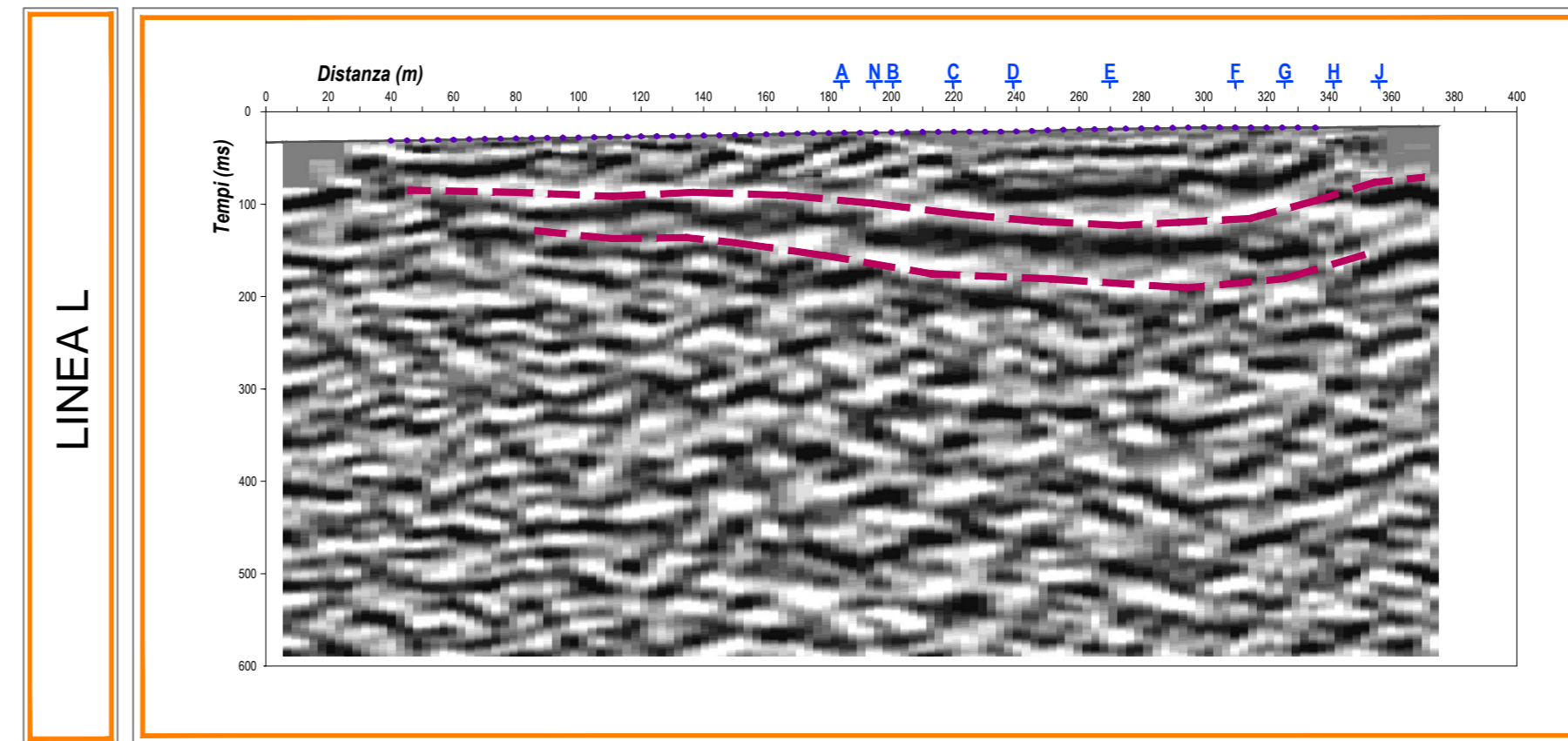
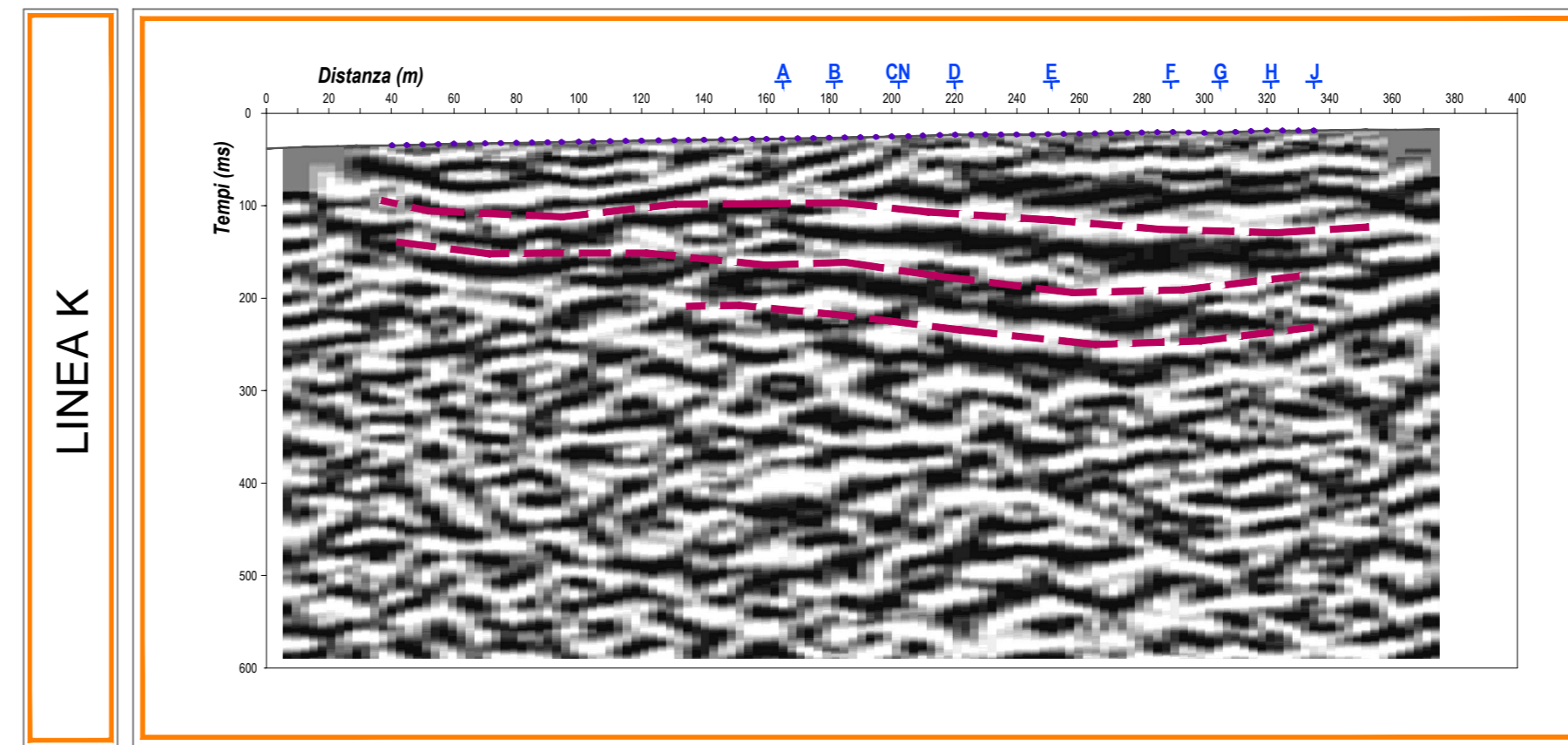
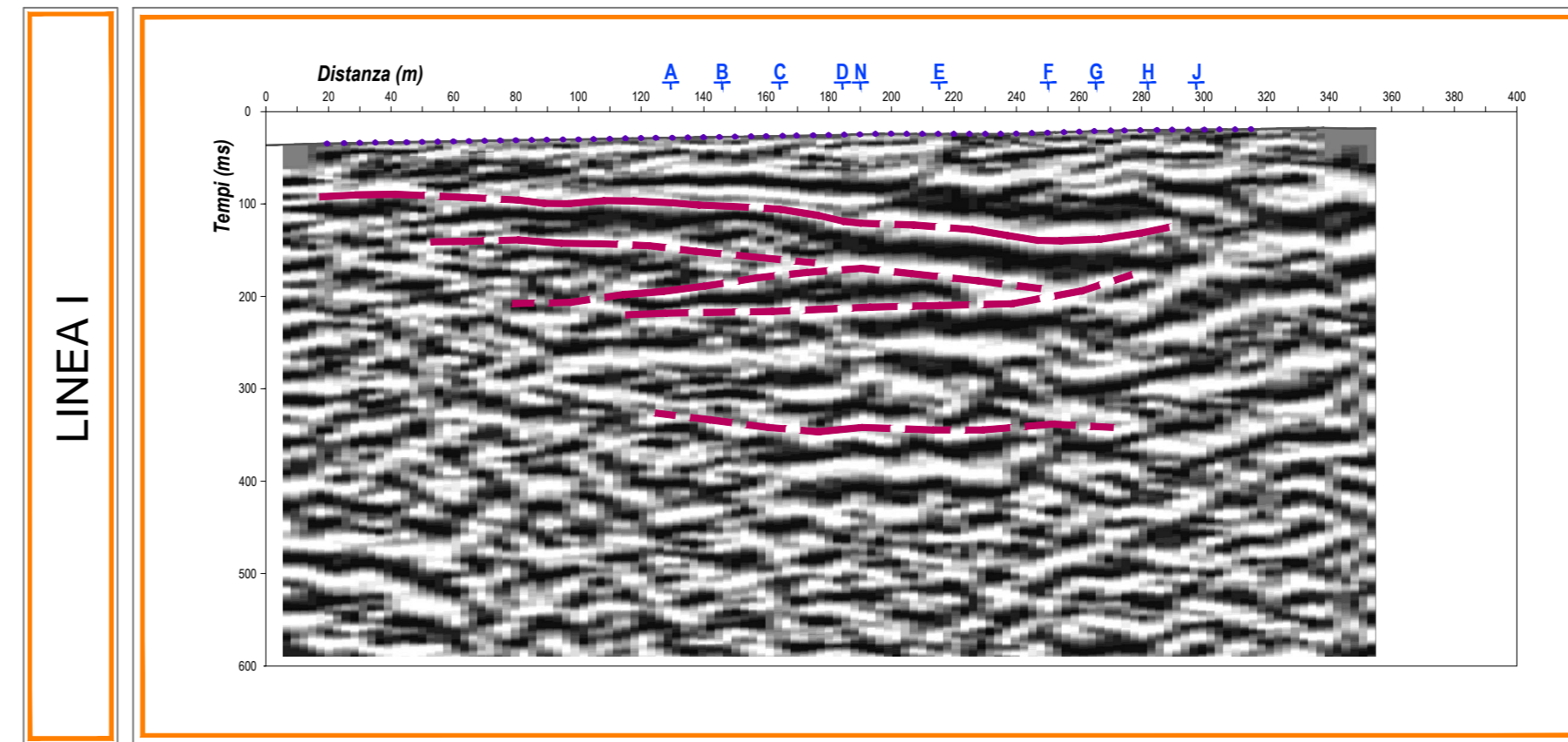
TOMOGRAFIA ELETTRICA



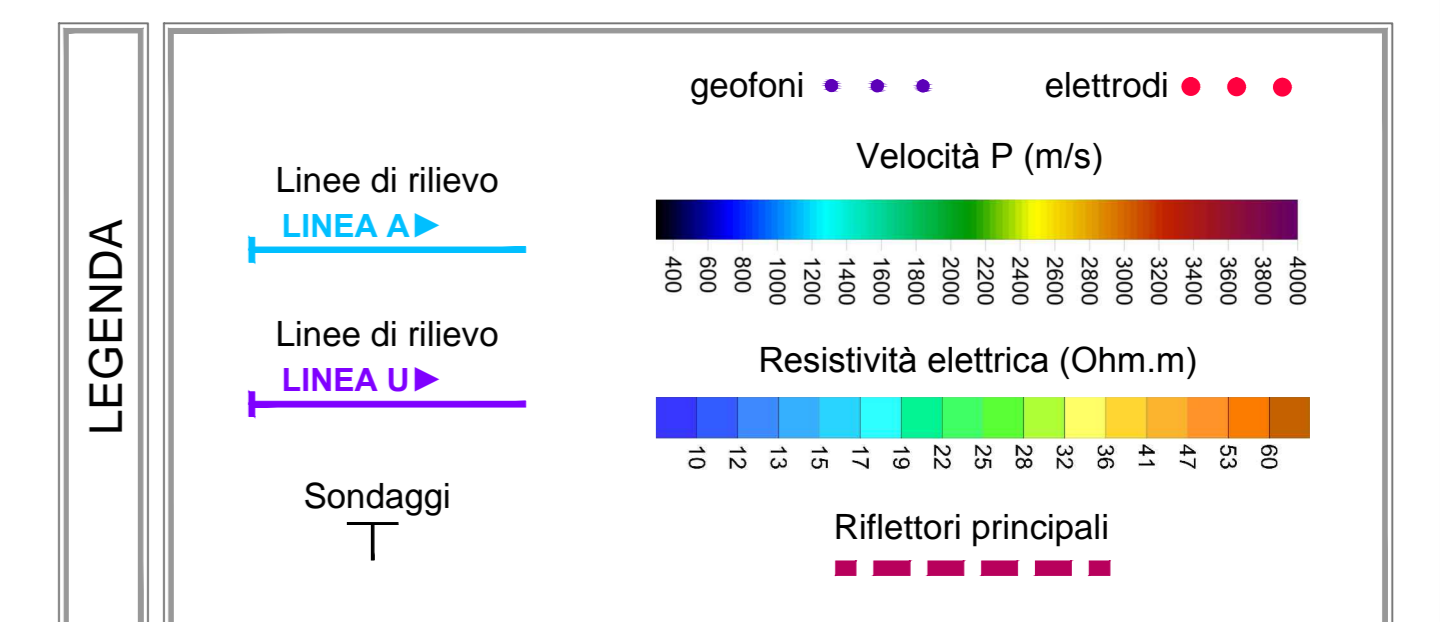
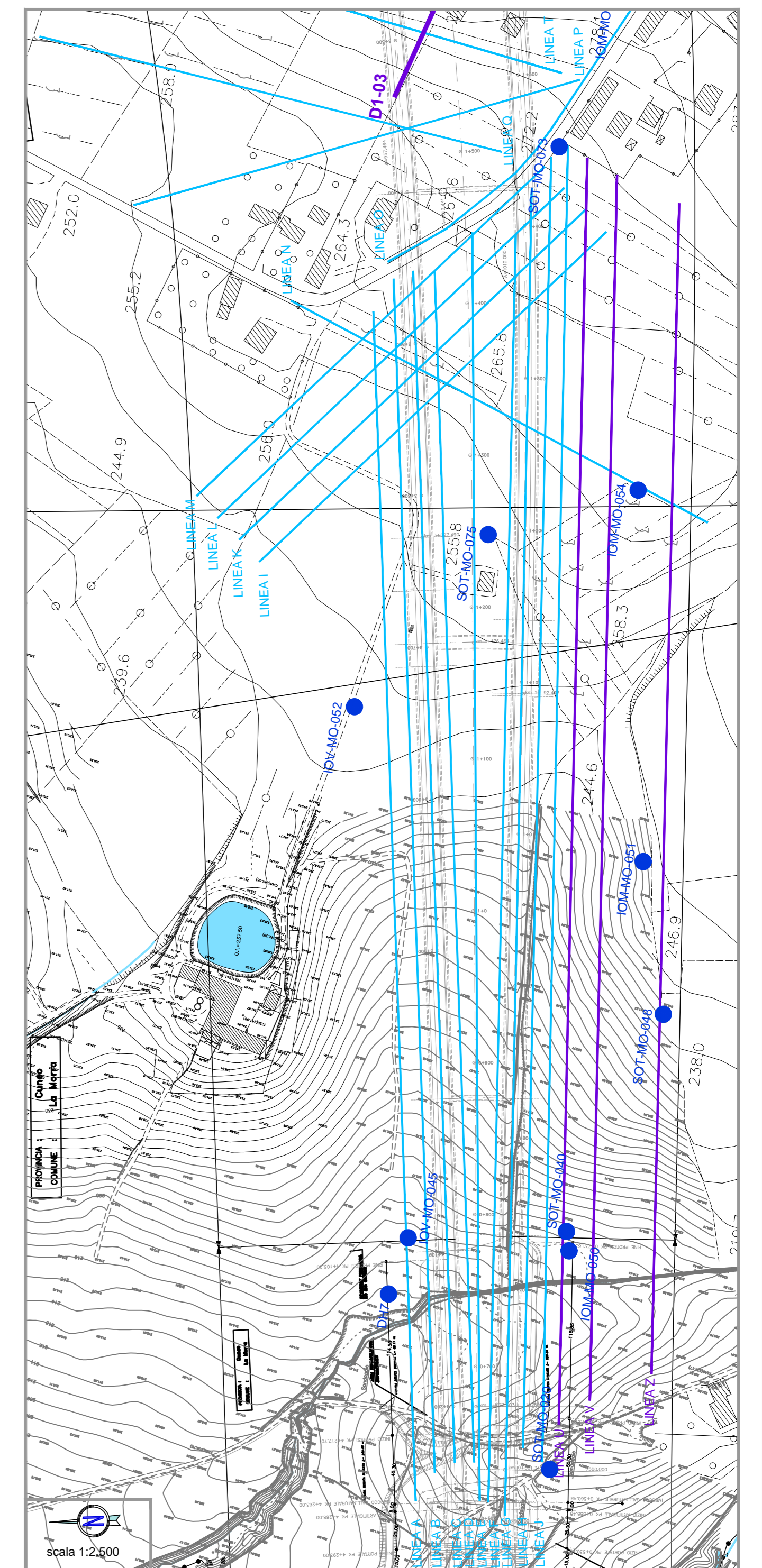
TOMOGRAFIA SISMICA A RIFRAZIONE



SISMICA A RIFLESSIONE



PLANIMETRIA GENERALE



AUTOSTRADA ASTI - CUNEO S.p.A.



COLLEGAMENTO AUTOSTRADALE
ASTI - CUNEO
TRONCO II A21 (ASTI EST) - A6 (MARENE)
LOTTO 6 RODDI - DIGA ENEL
VERIFICA DI ASSOGGETTABILITA' EX ART. 20 D.LGS. 152/06
STRALCIO DEL PROGETTO ESECUTIVO

ZONA GALLERIA - SEZIONI DI RILIEVO
TOMOGRAFIA ELETTRICA
TOMOGRAFIA SISMICA A RIFRAZIONE
SISMICA A RIFLESSIONE

Approvato	Data	Descrizione	Redatto	Controllato	Approvato	Data	Scale
							1:2.000 1:2.500

PROGETTISTA e RESP. INTEGRAZIONE PRESTAZIONI SPECIALISTICHE:
Dott. Ing. Enrico Ghislandi
Albo di Milano
N° A. 16993

CONCESSIONARIA:
AUTOSTRADA ASTI - CUNEO S.p.A.

03a