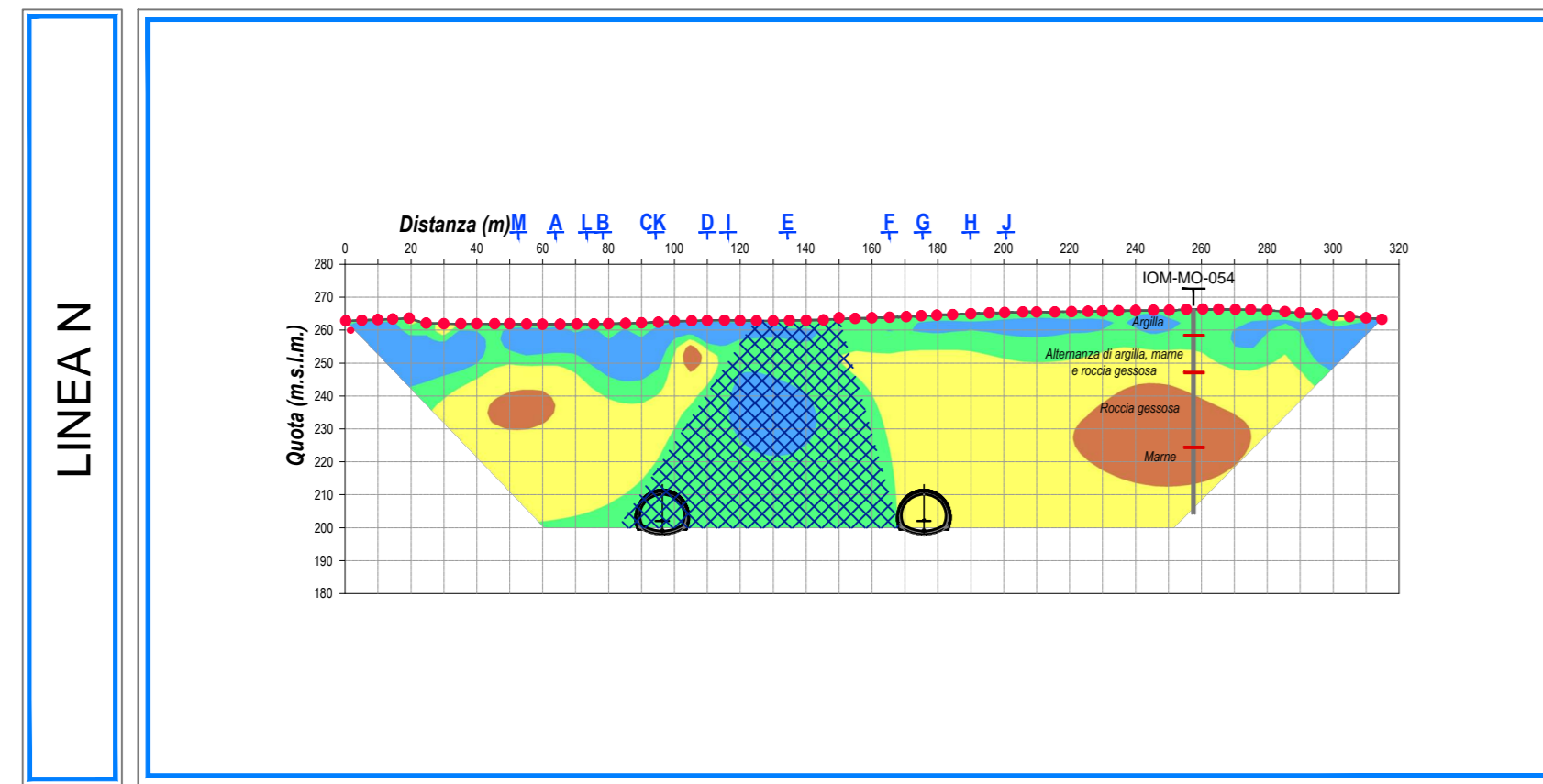
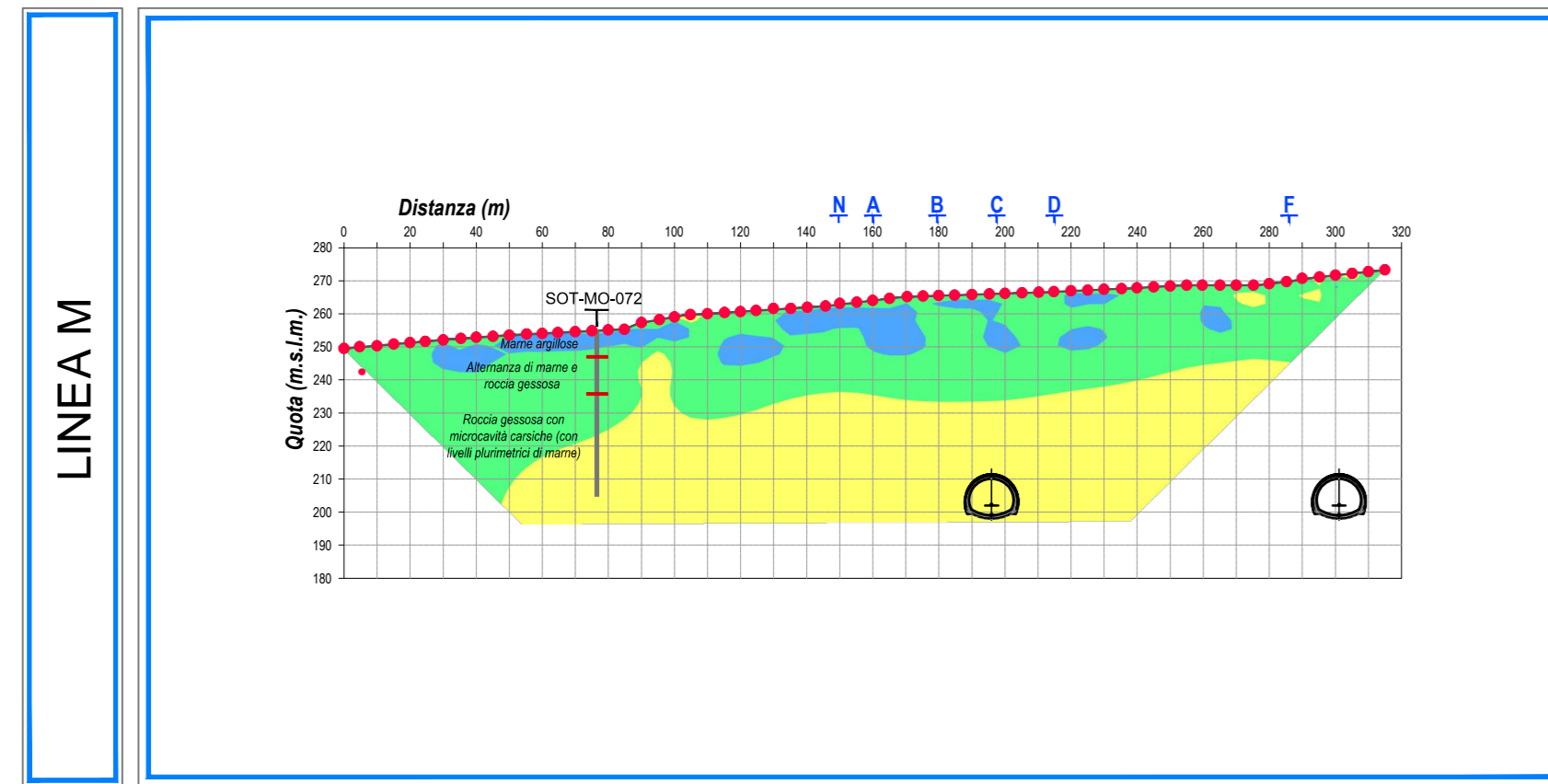
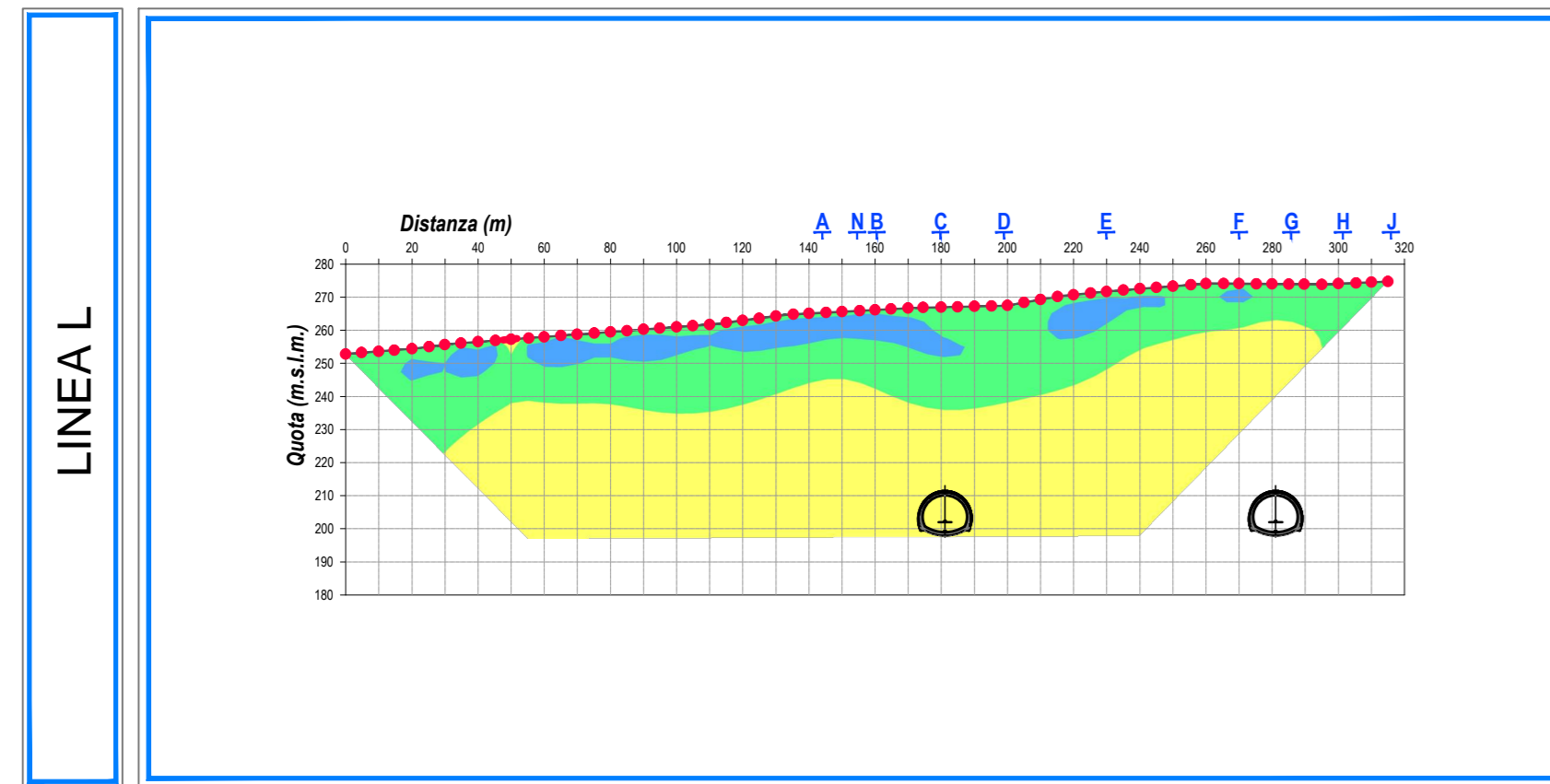
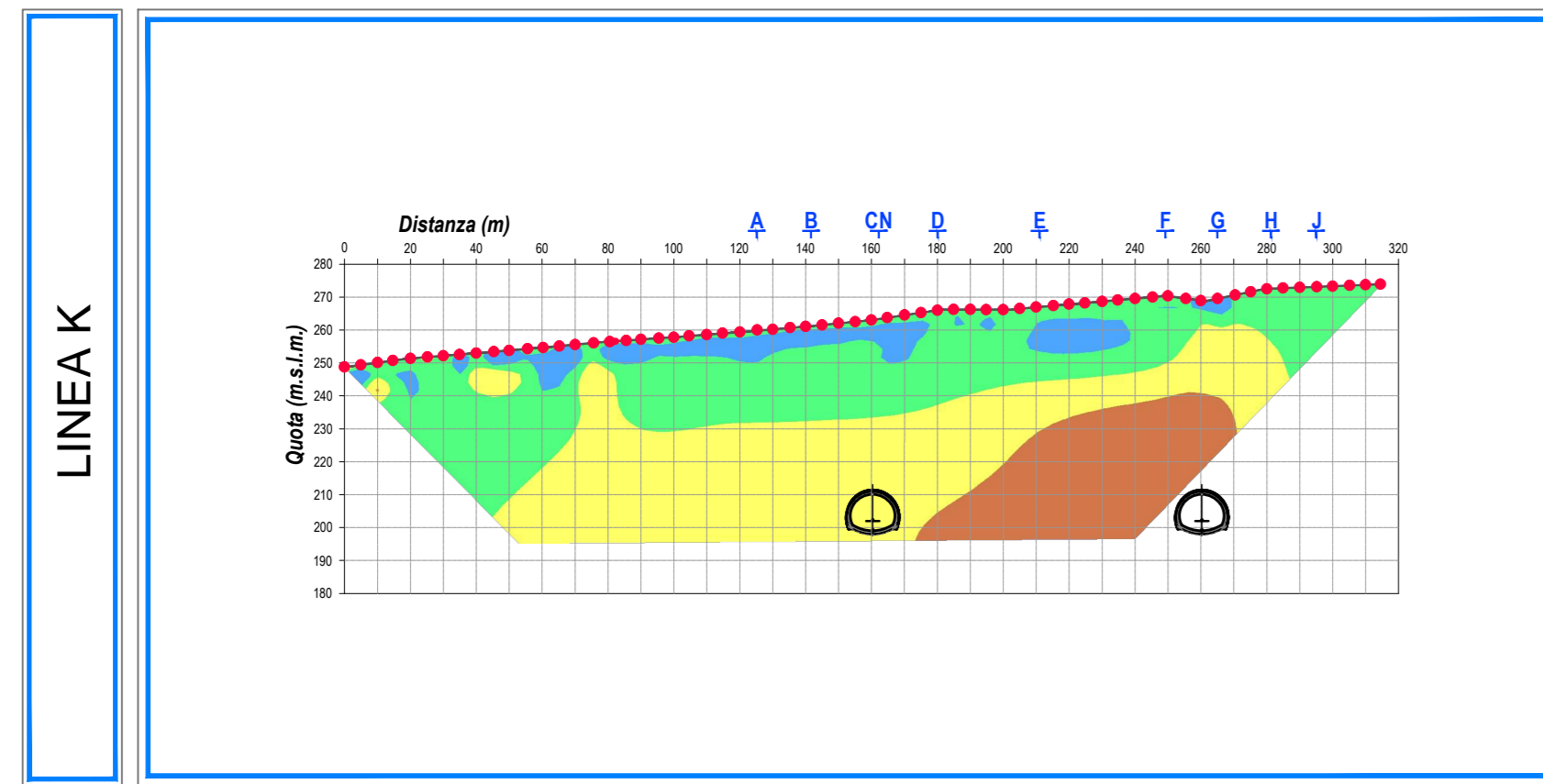
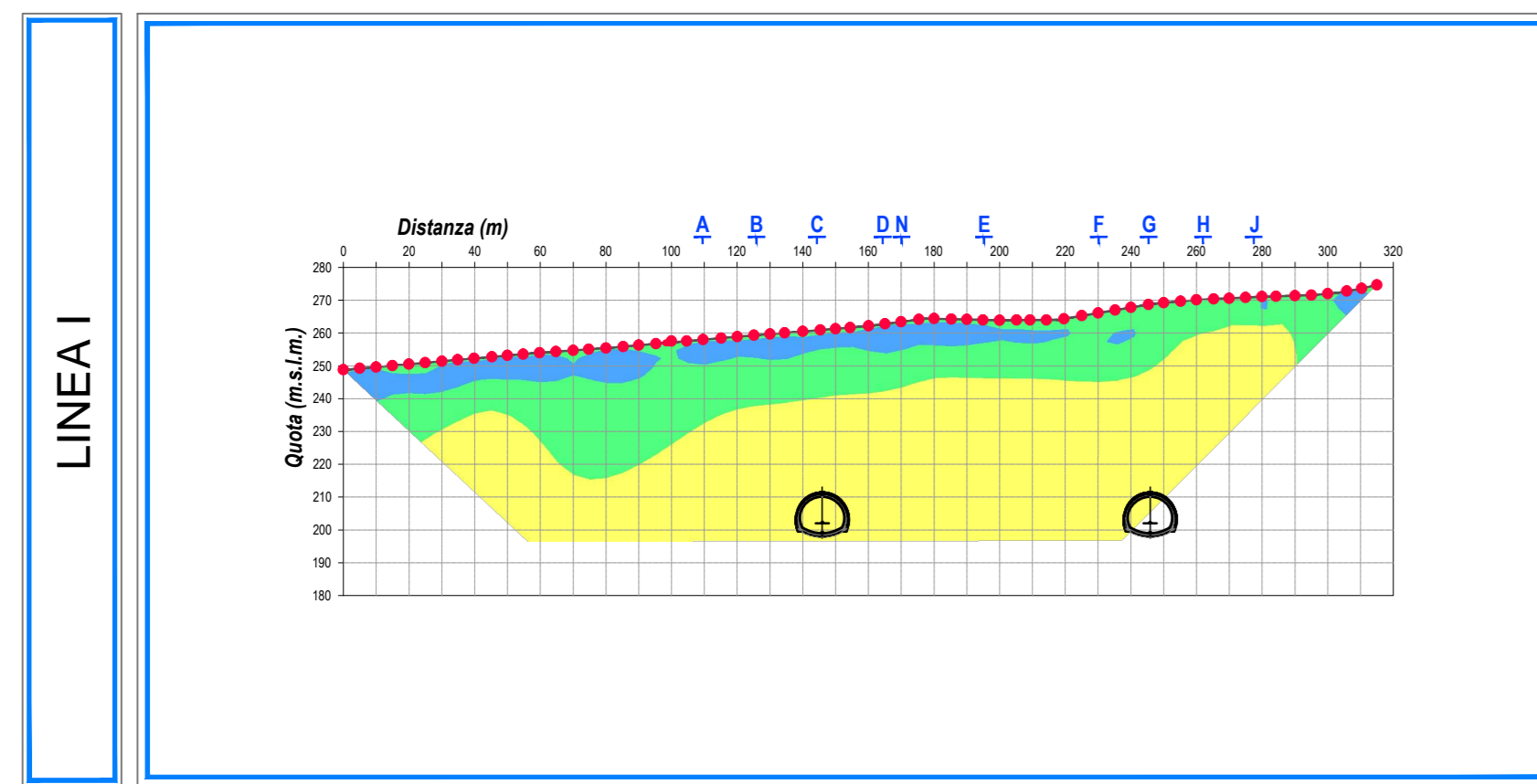
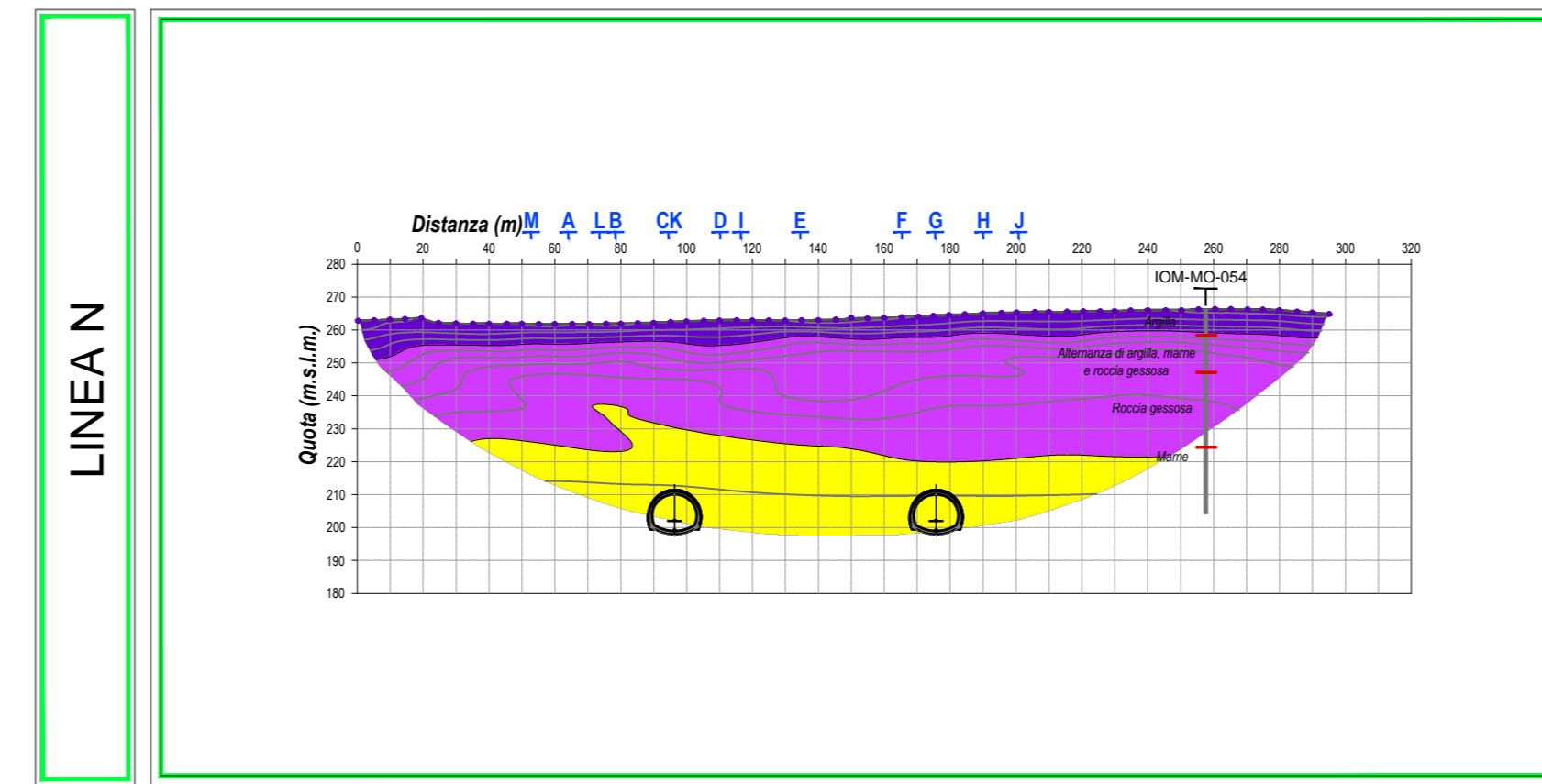
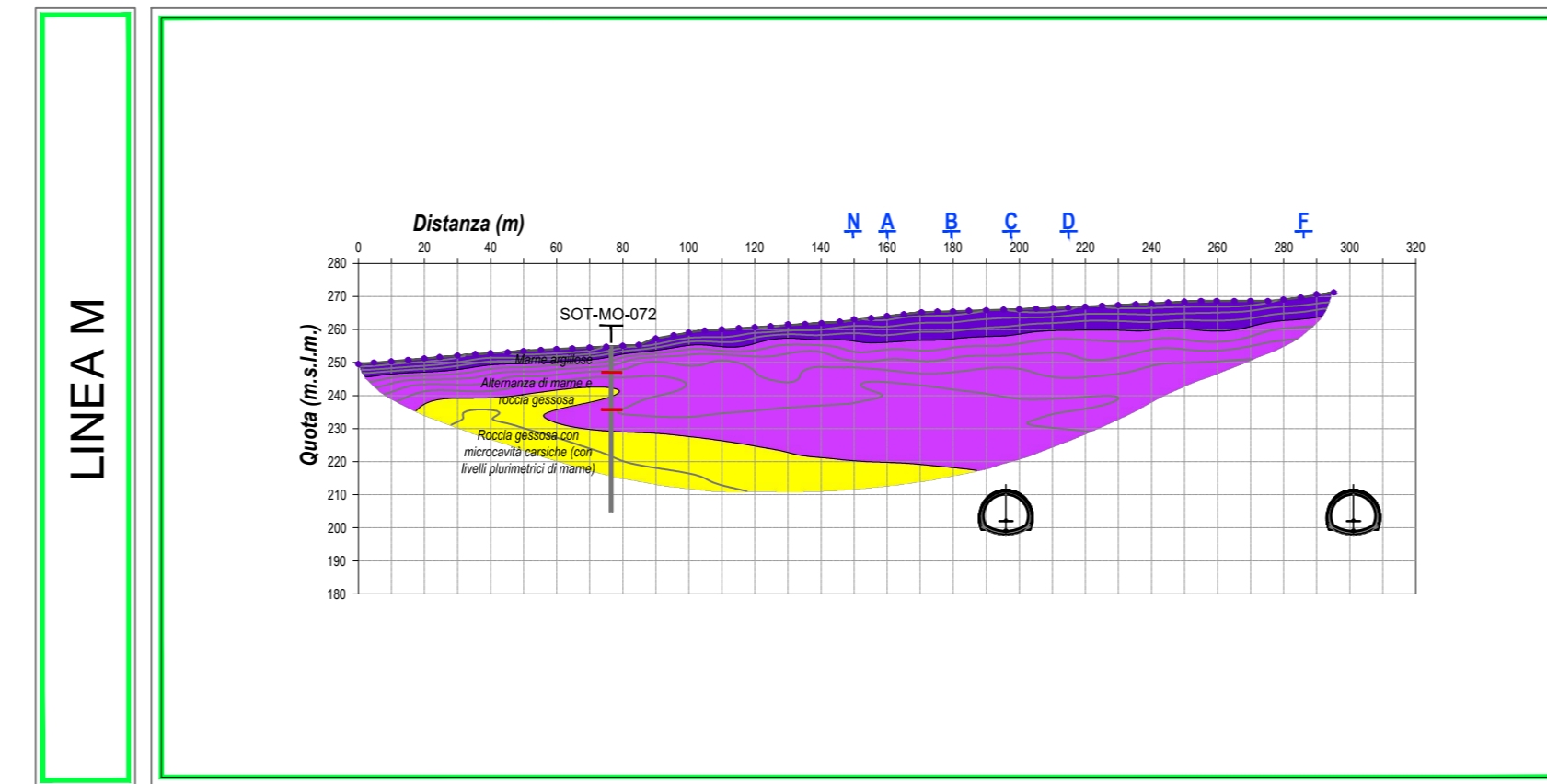
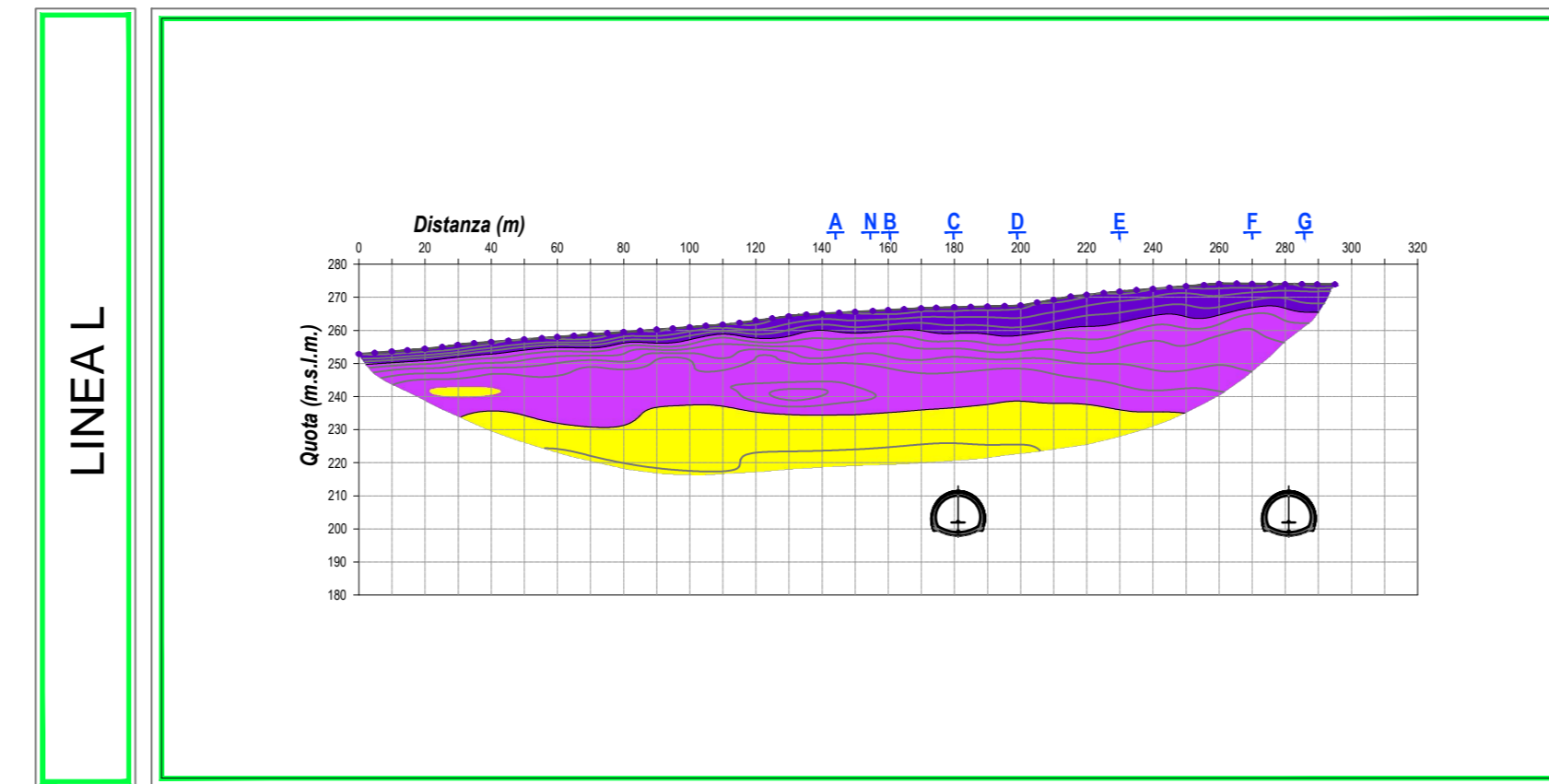
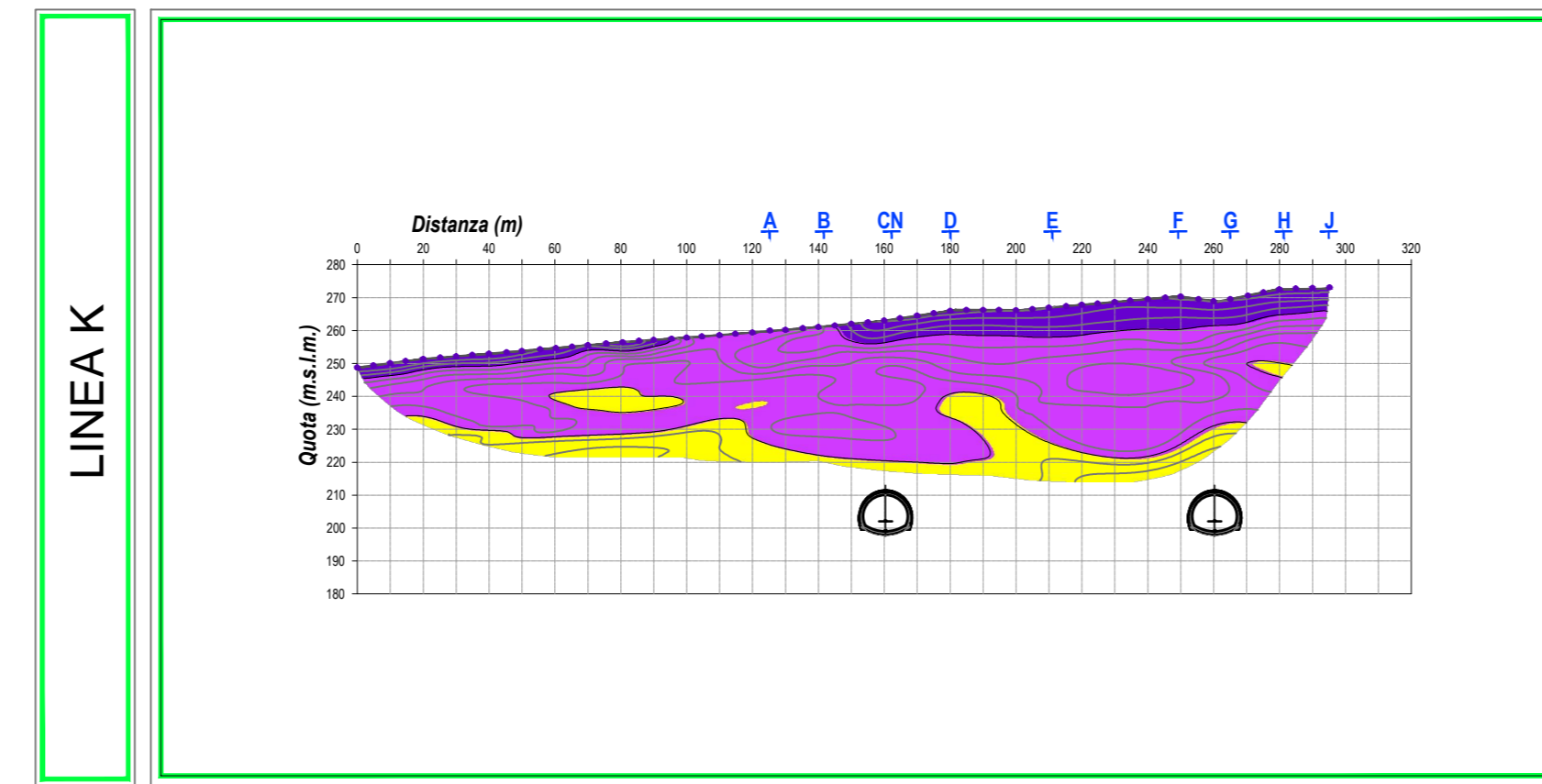
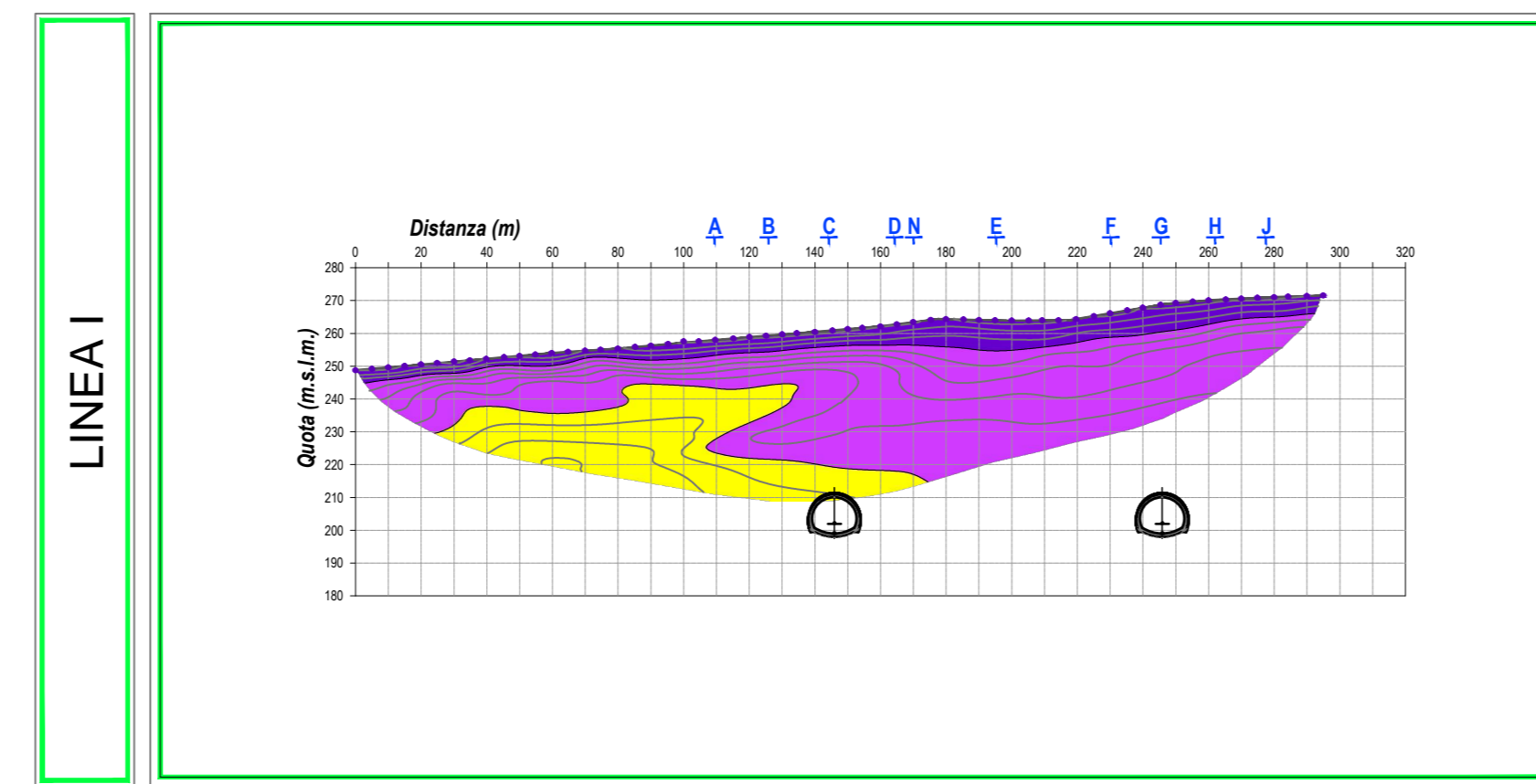


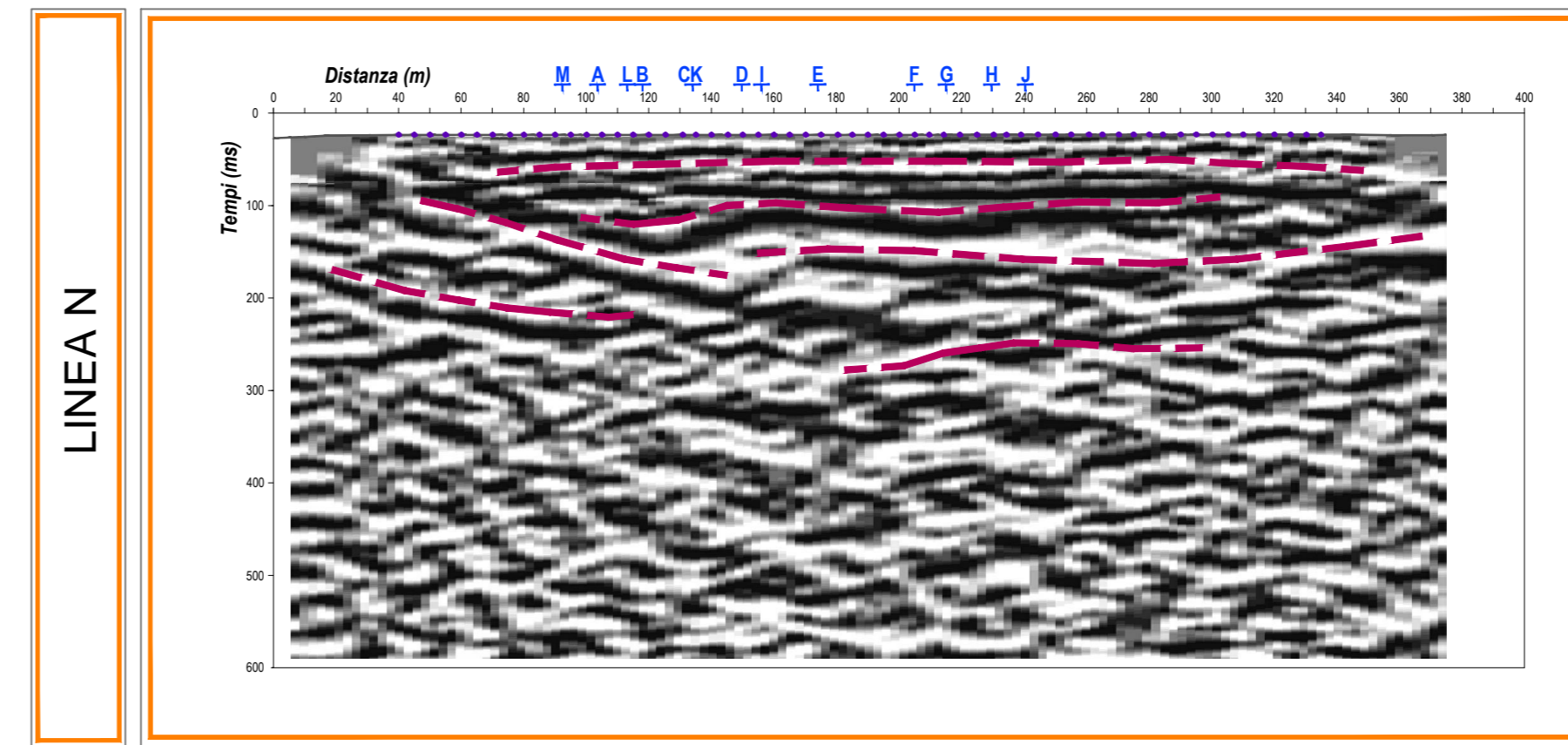
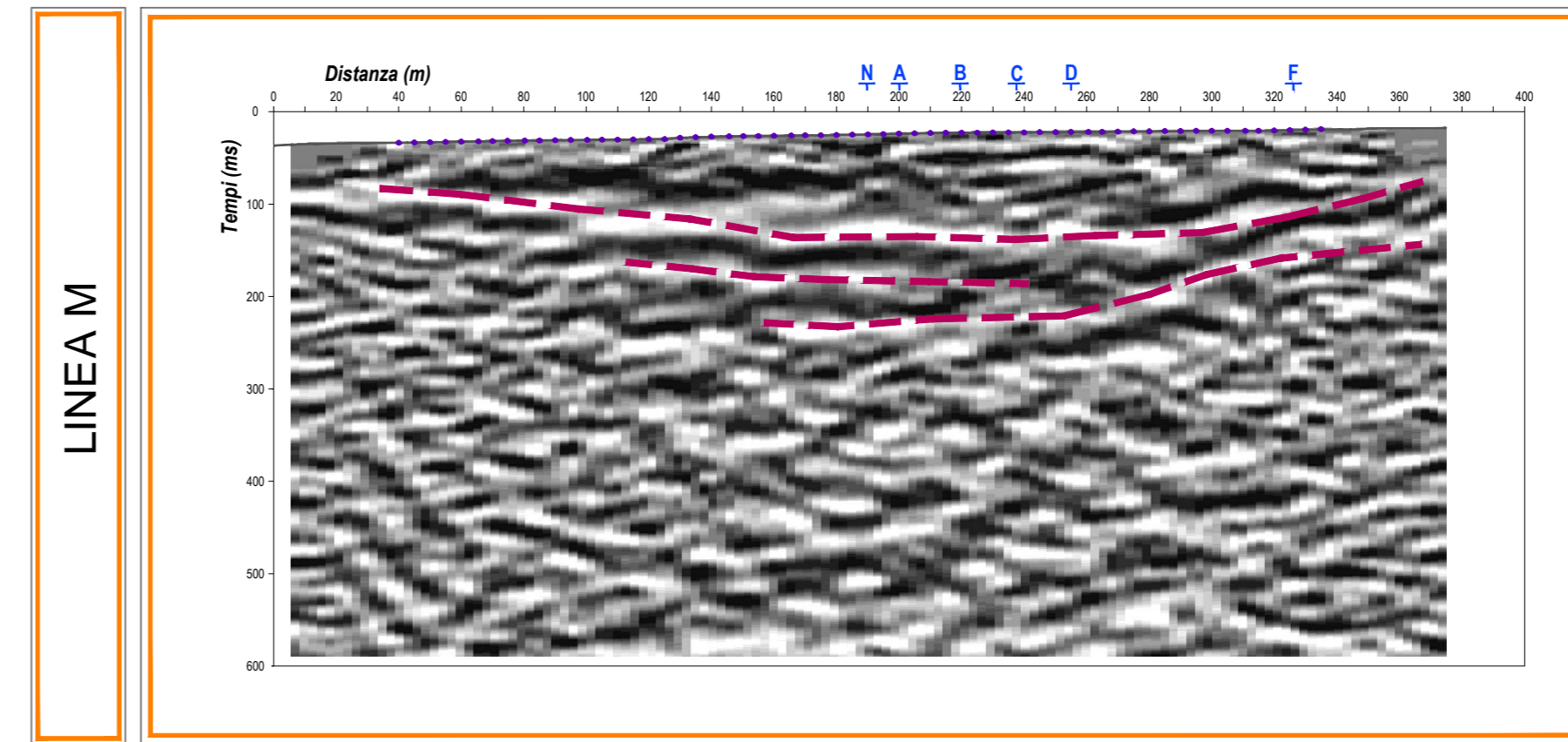
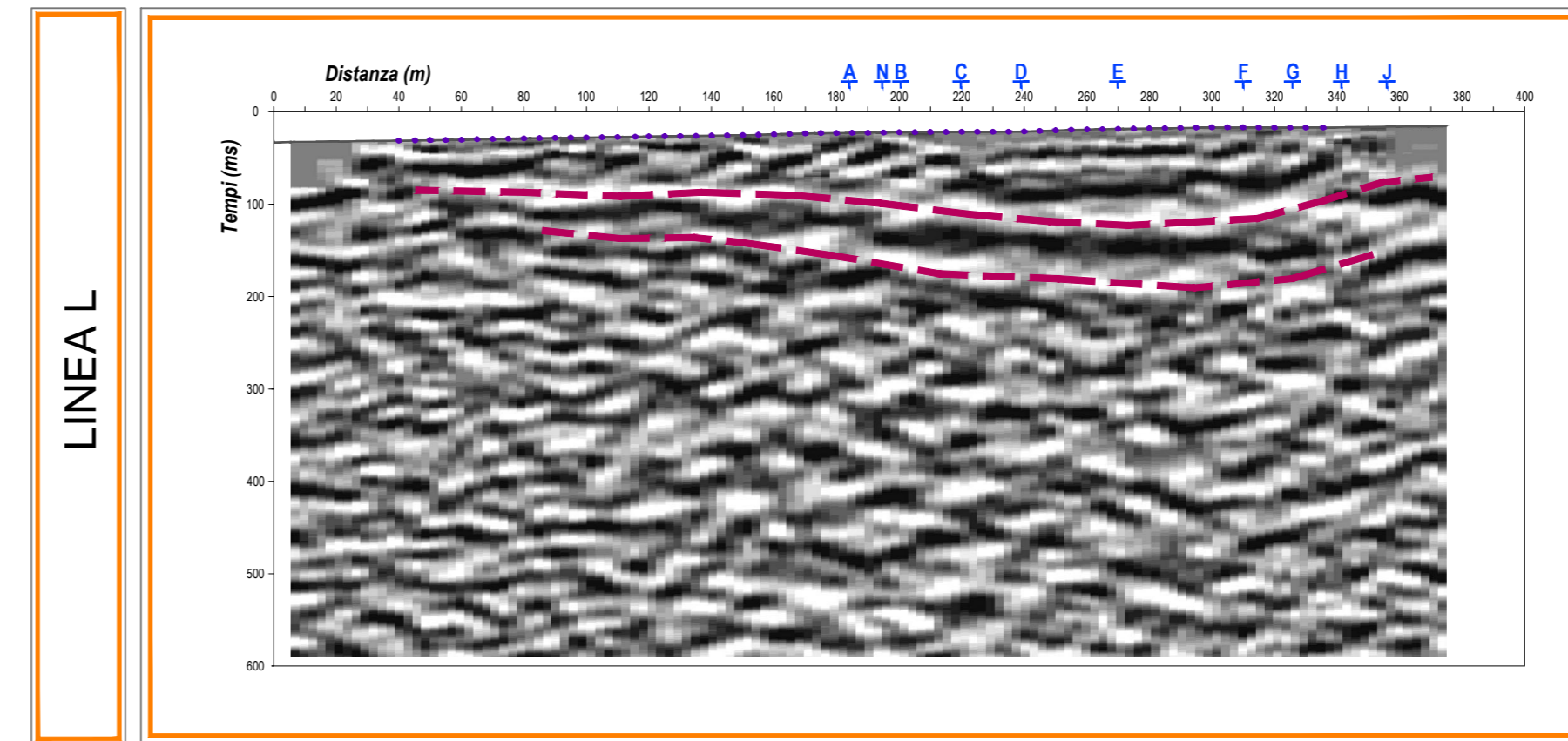
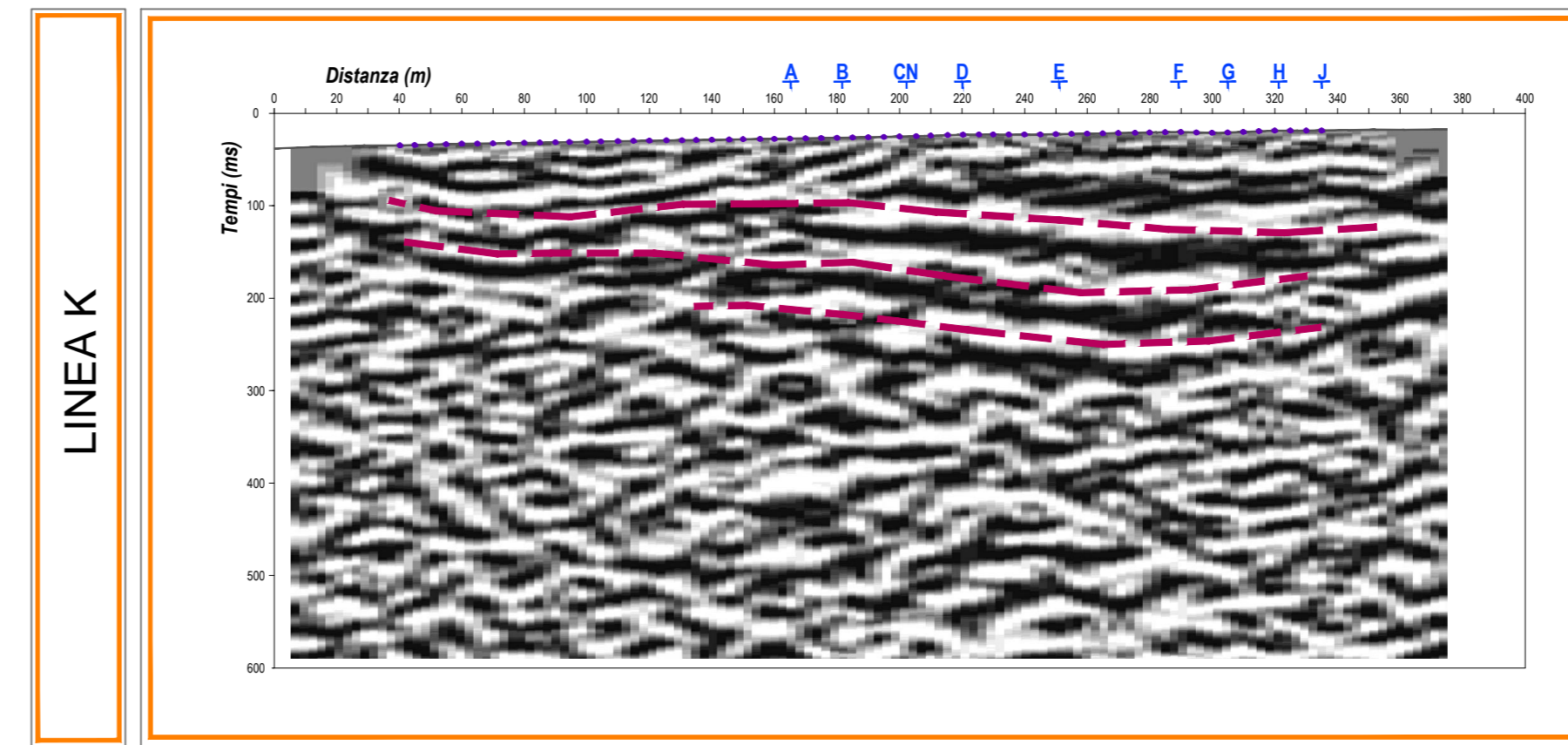
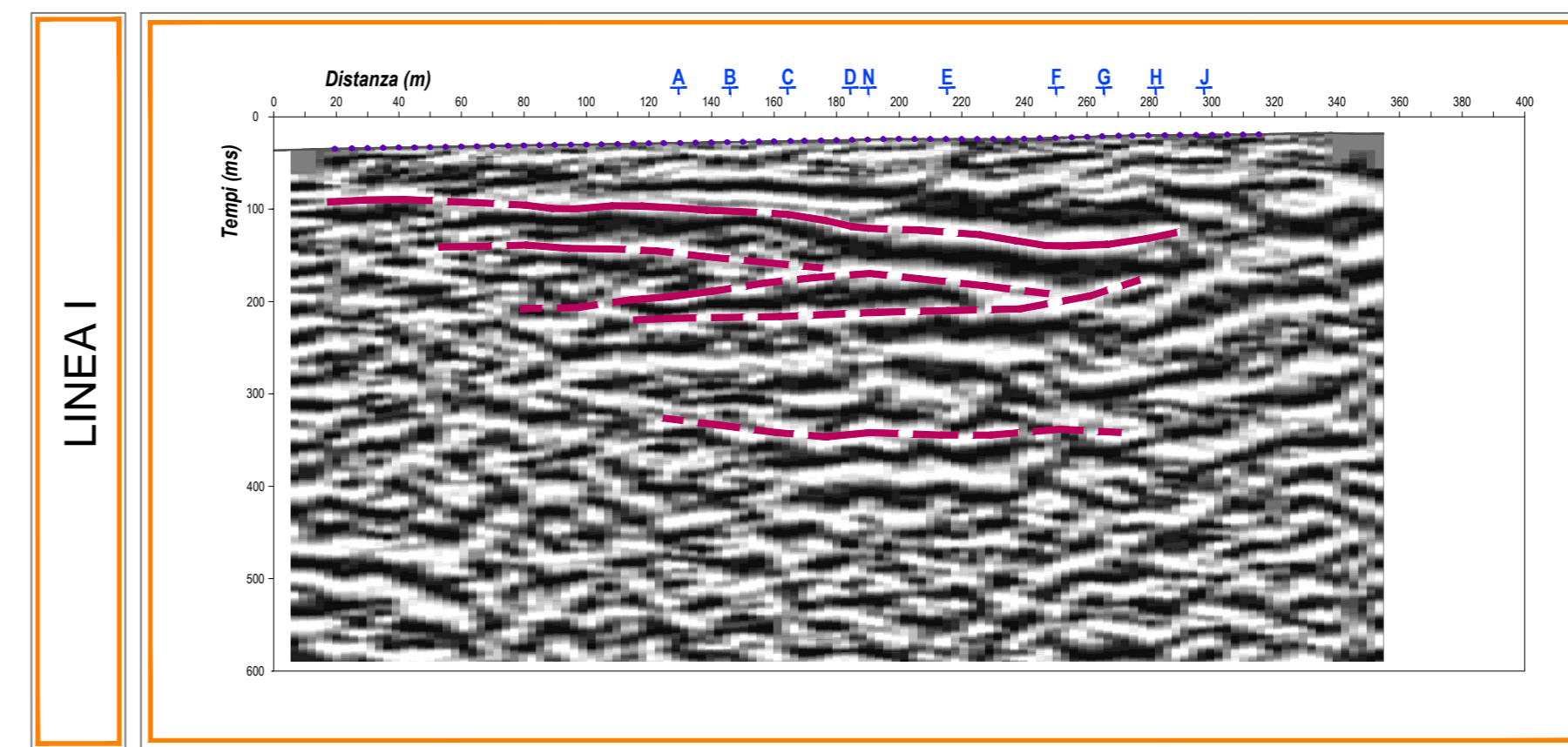
TOMOGRAFIA ELETTRICA



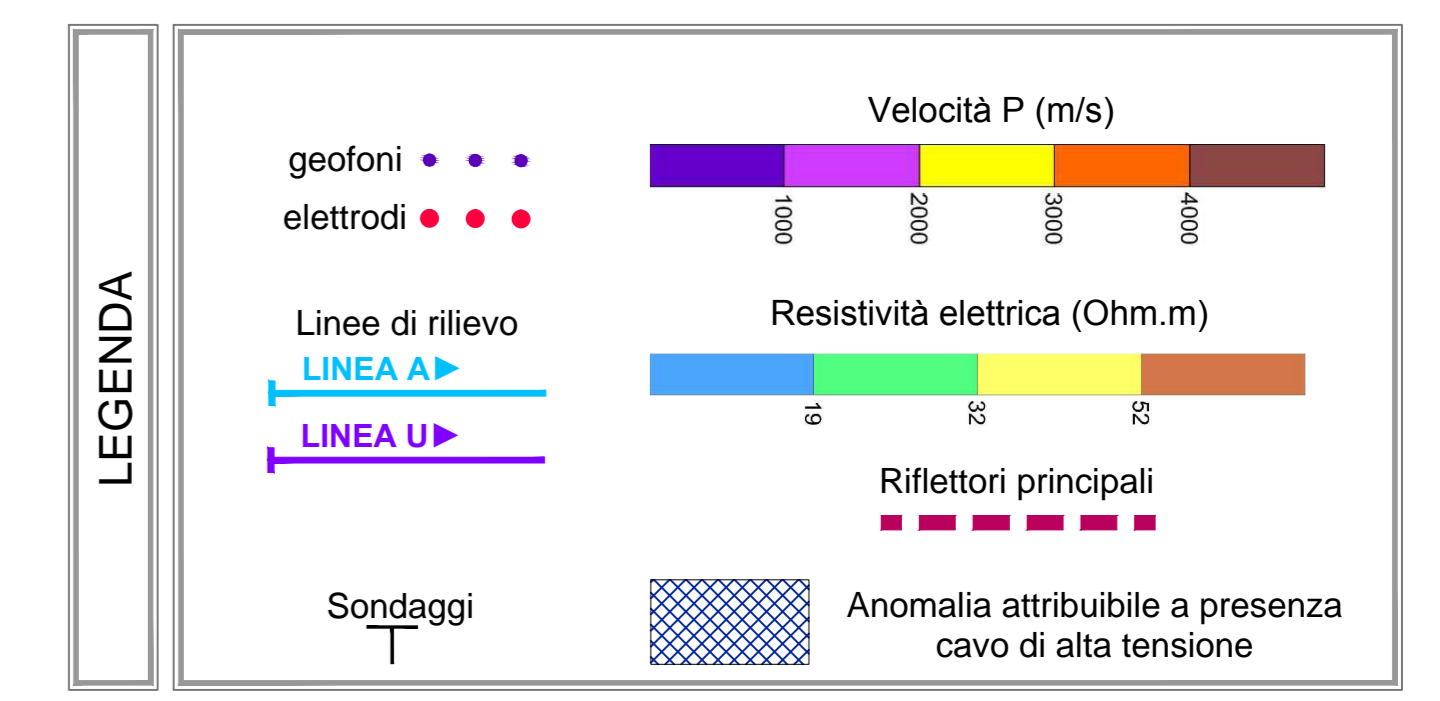
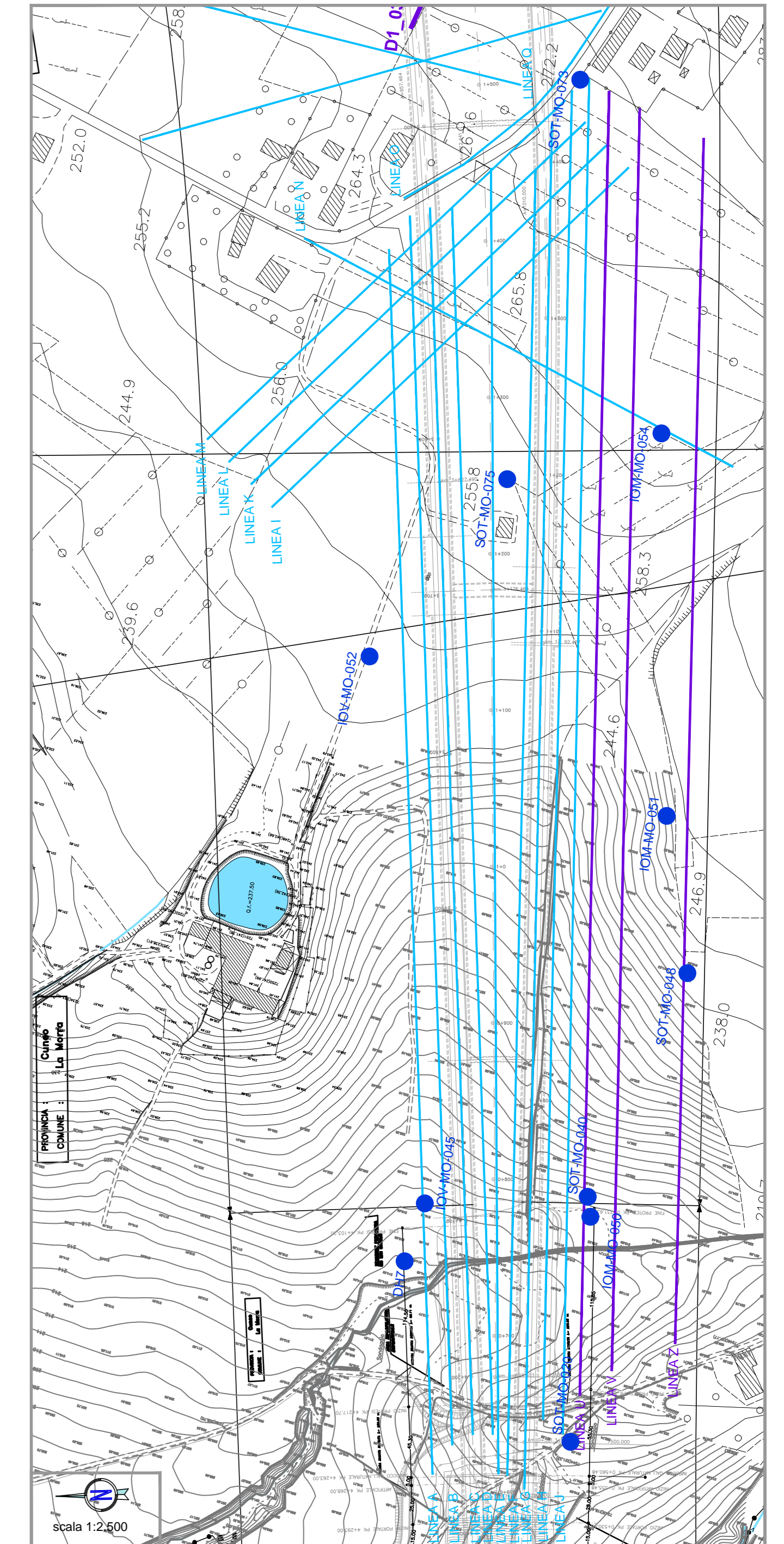
TOMOGRAFIA SISMICA A RIFRAZIONE



SISMICA A RIFLESSIONE



PLANIMETRIA GENERALE



AUTOSTRADA ASTI - CUNEO S.p.A.

REGIONE PIEMONTE

PROVINCIA DI ASTI PROVINCIA DI CUNEO

COLLEGAMENTO AUTOSTRADALE ASTI - CUNEO

TRONCO II A21 (ASTI EST) - A6 (MARENE)
LOTTO 6 RODDI - DIGA ENEL

VERIFICA DI ASSOGGETTABILITA' EX ART. 20 D.LGS. 152/06
STRALCIO DEL PROGETTO ESECUTIVO

ZONA GALLERIA - SEZIONI INTERPRETATIVE
TOMOGRAFIA ELETTRICA
TOMOGRAFIA SISMICA A RIFRAZIONE
SISMICA A RIFLESSIONE

Approvato:	Data:	Descrizione:	Redatto:	Controllato:	Approvato:	Scale:	1:2.000 1:2.500
------------	-------	--------------	----------	--------------	------------	--------	-----------------

PROGETTISTA + RESP. INTEGRAZIONE PRESTAZIONI SPECIALISTICHE:
Dott. Ing. Enrico Ghislandi
Albo di Milano
N° A. 16993

CONCESSIONARIA:
AUTOSTRADA ASTI - CUNEO S.p.A.

03b