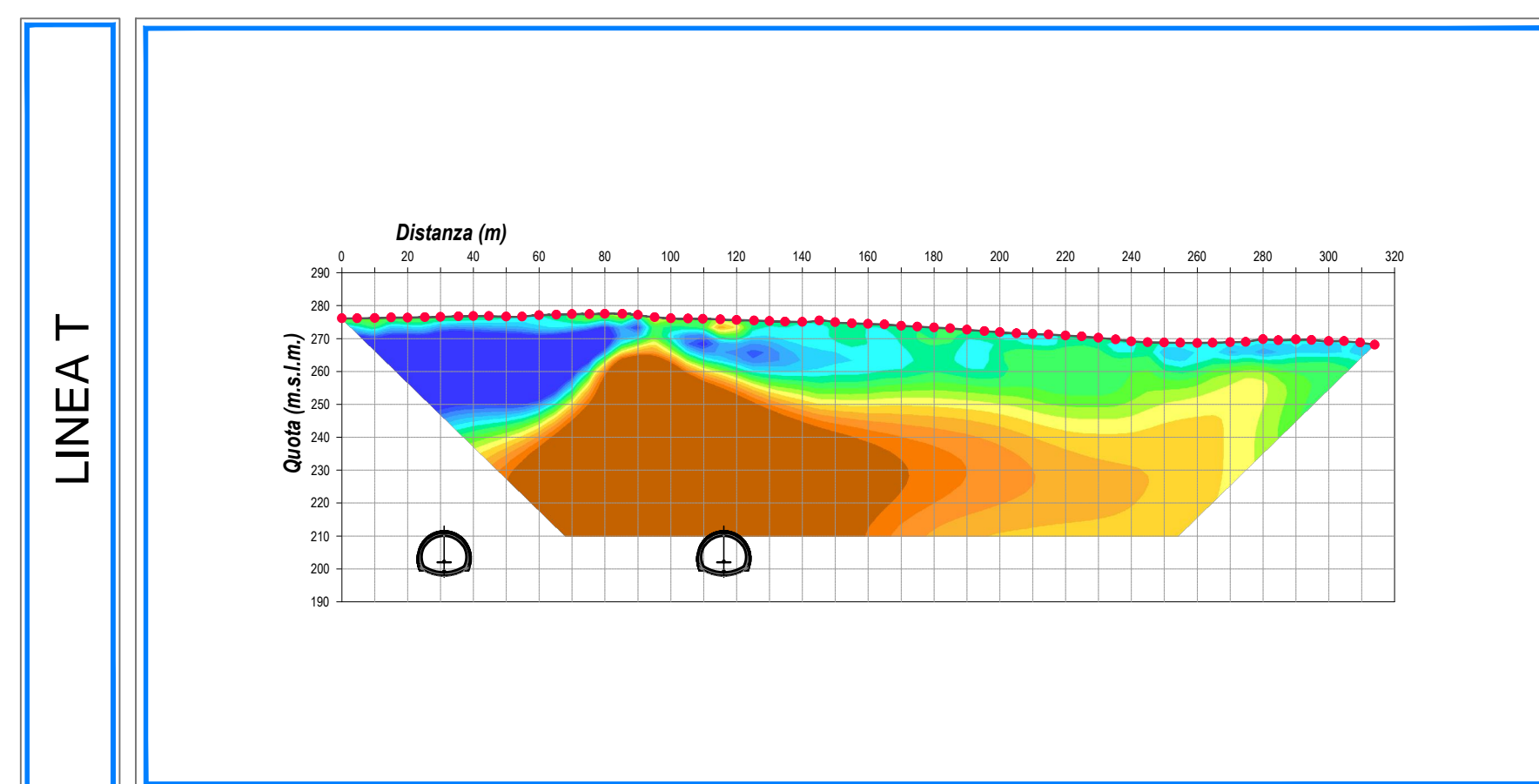
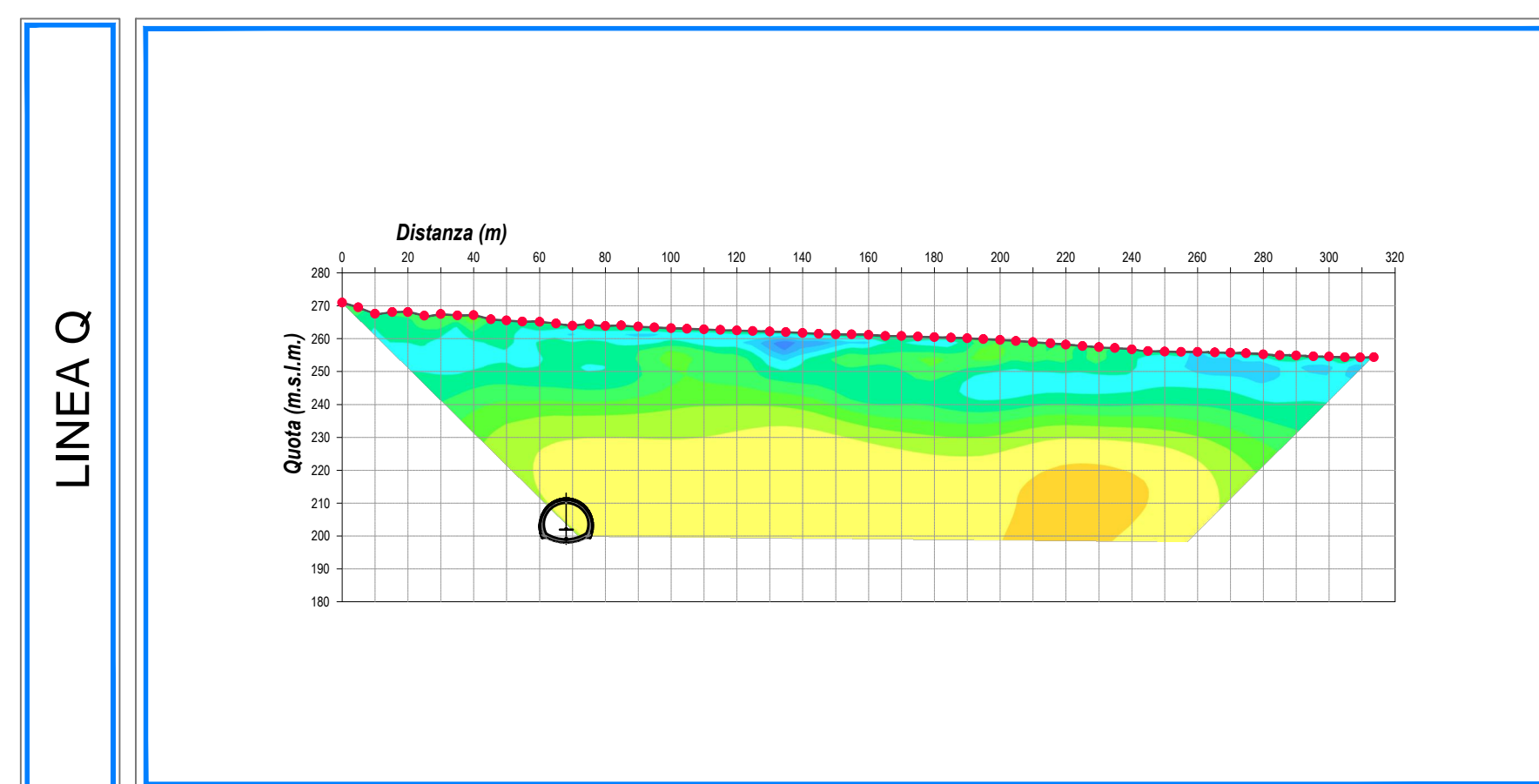
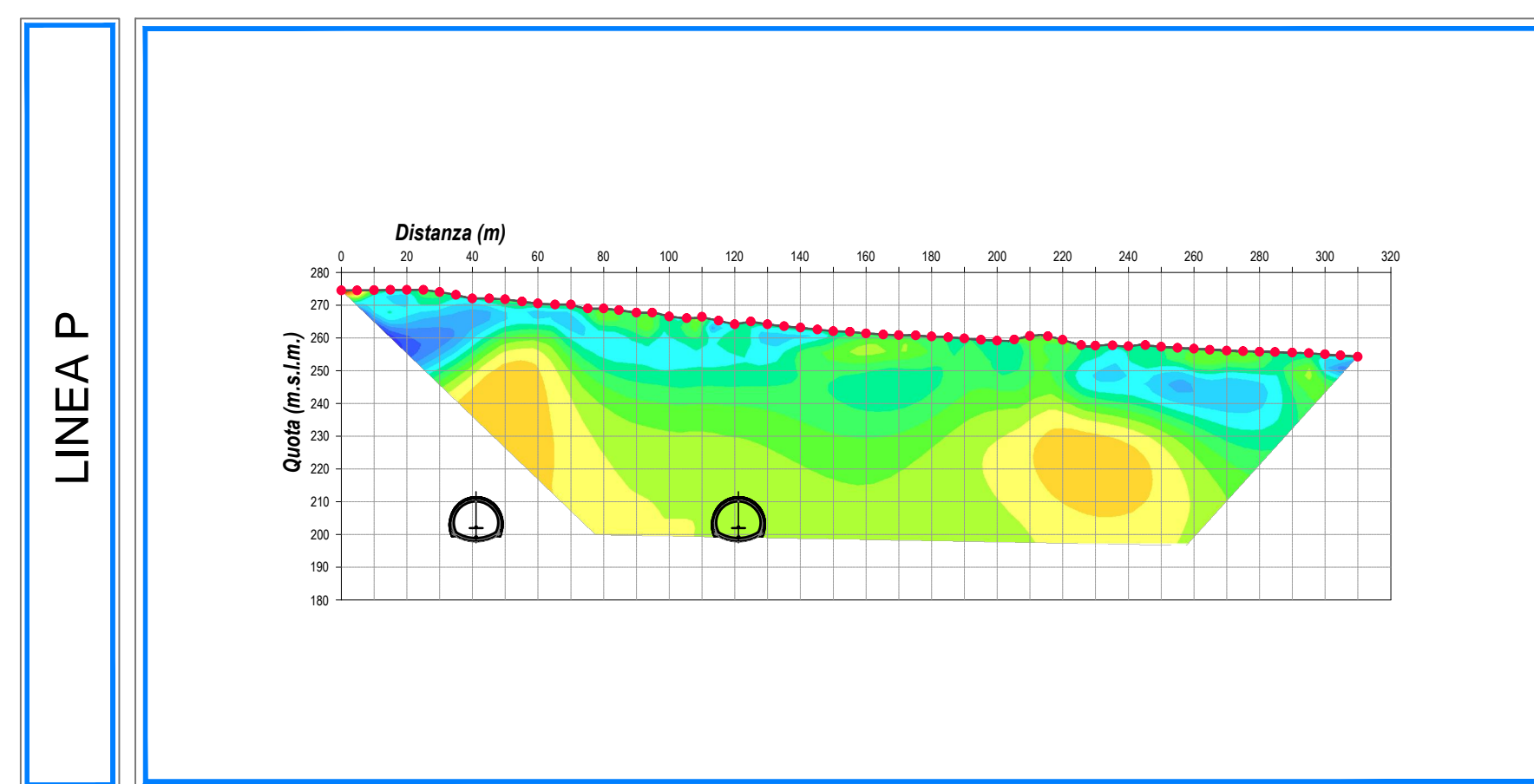
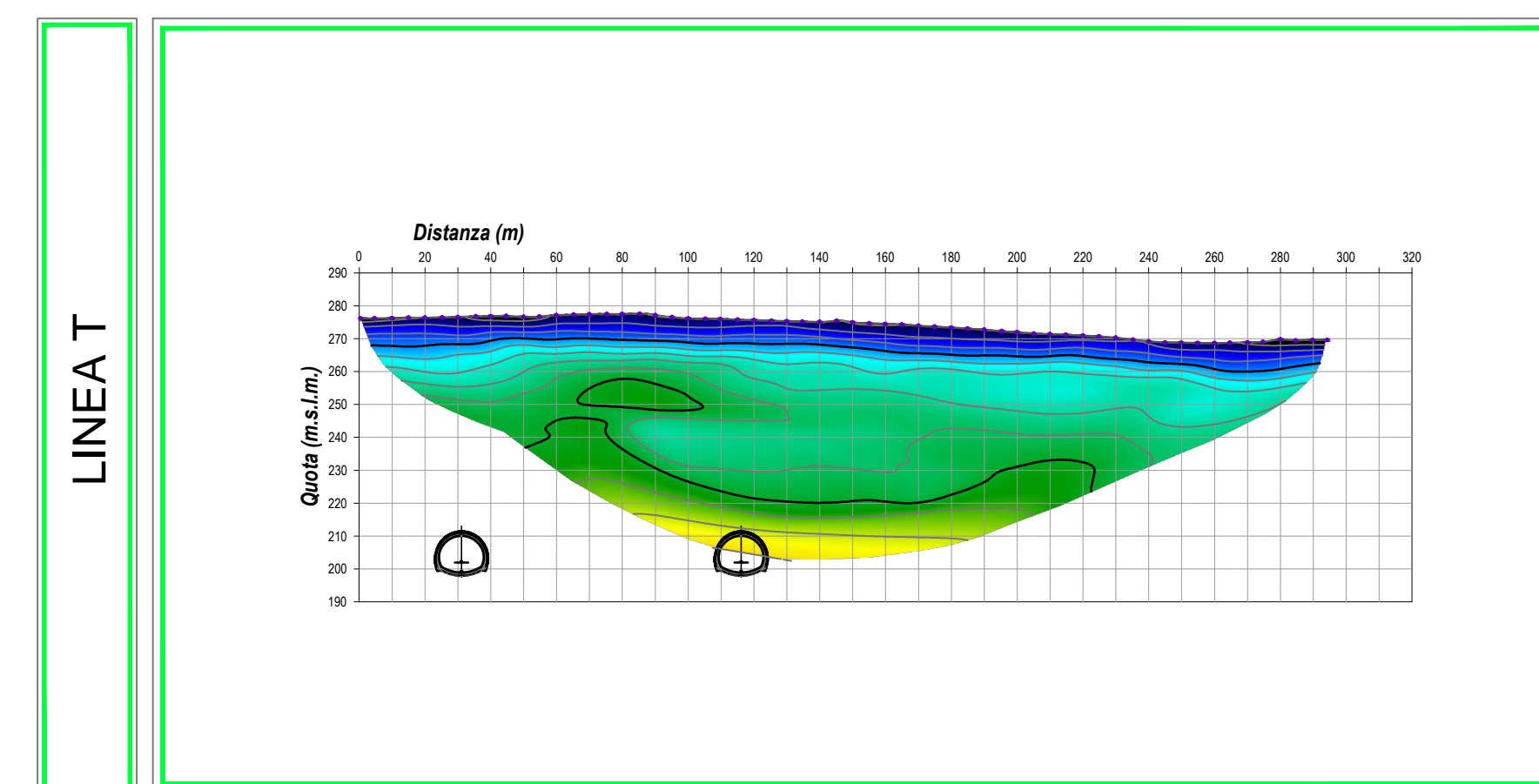
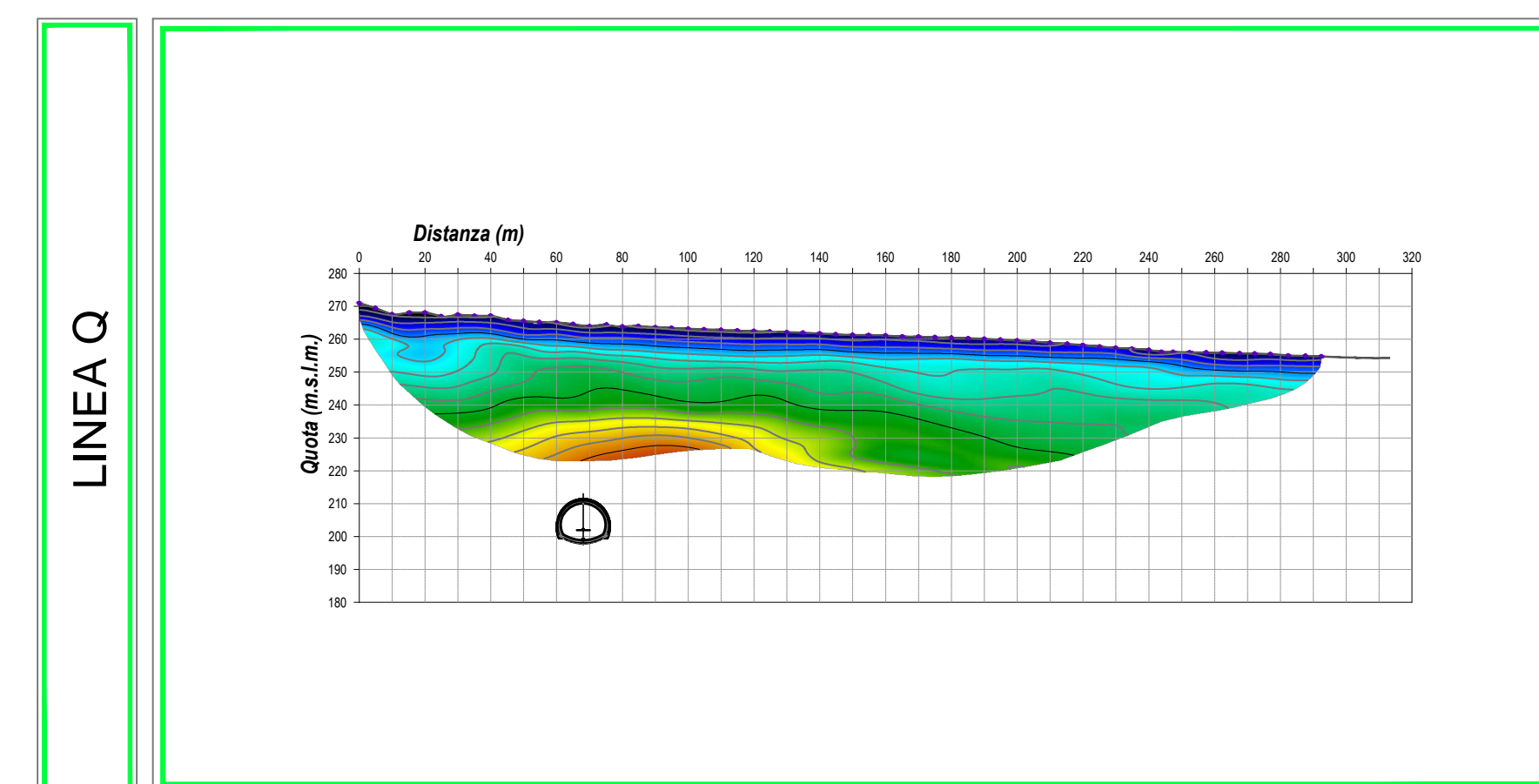
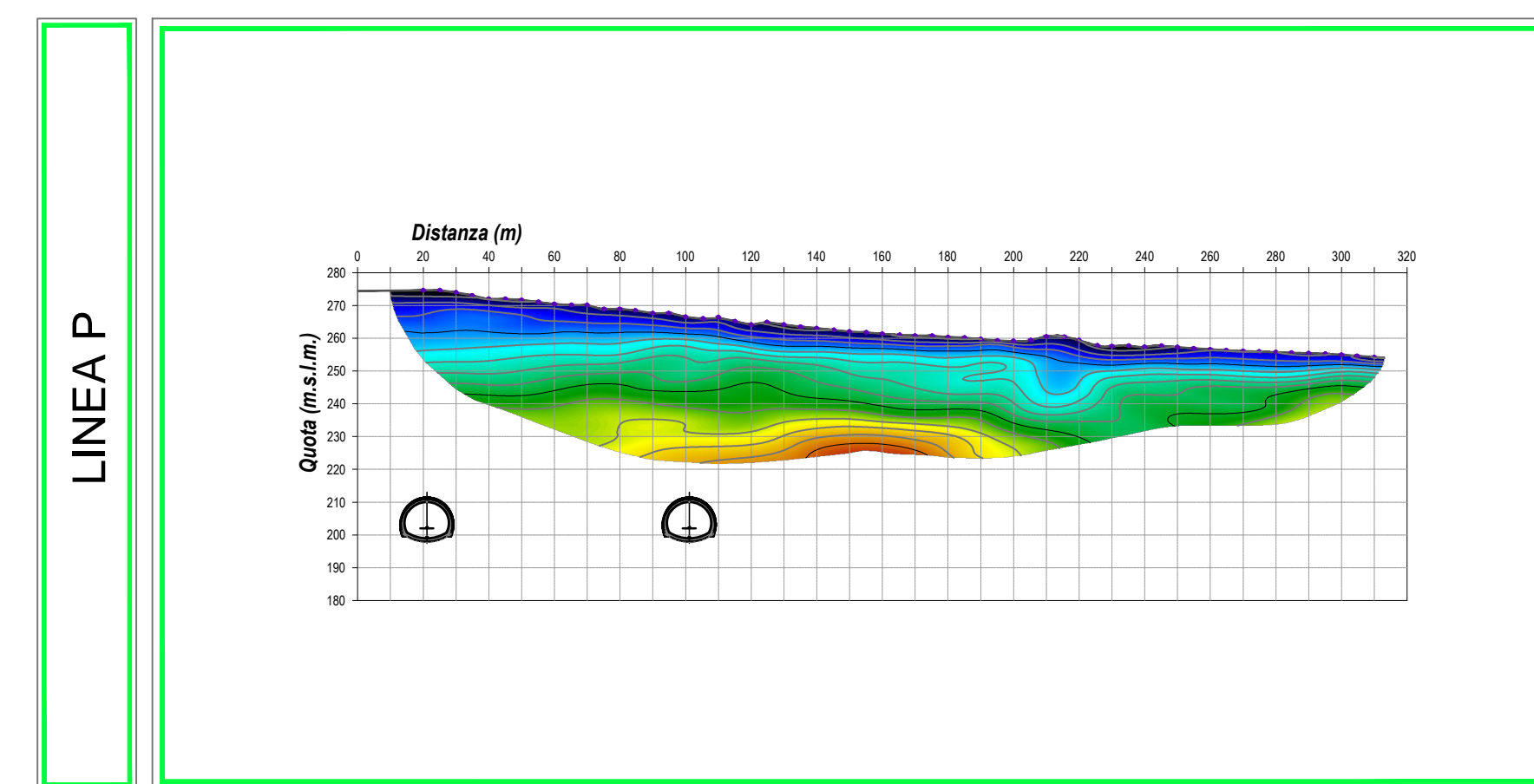
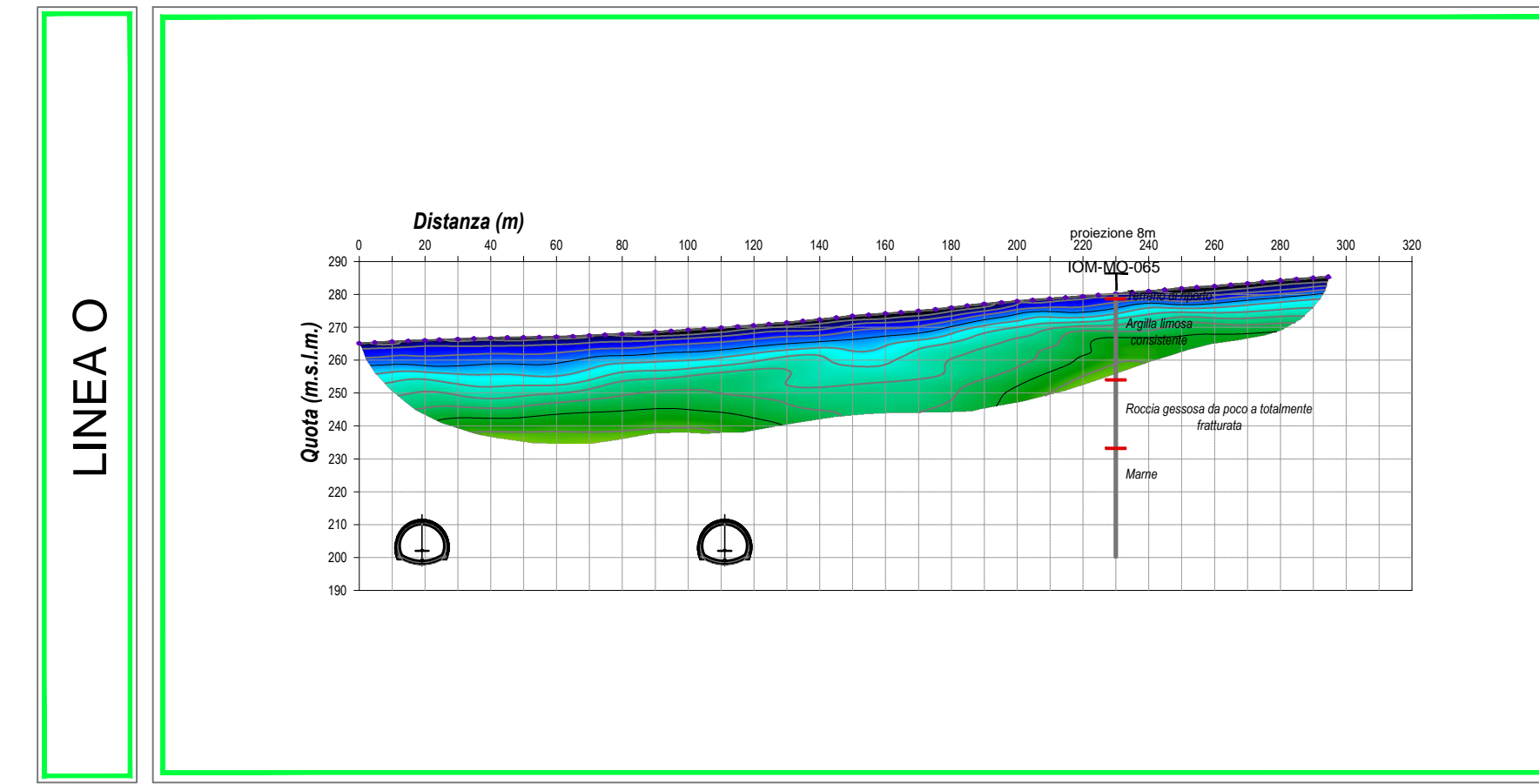


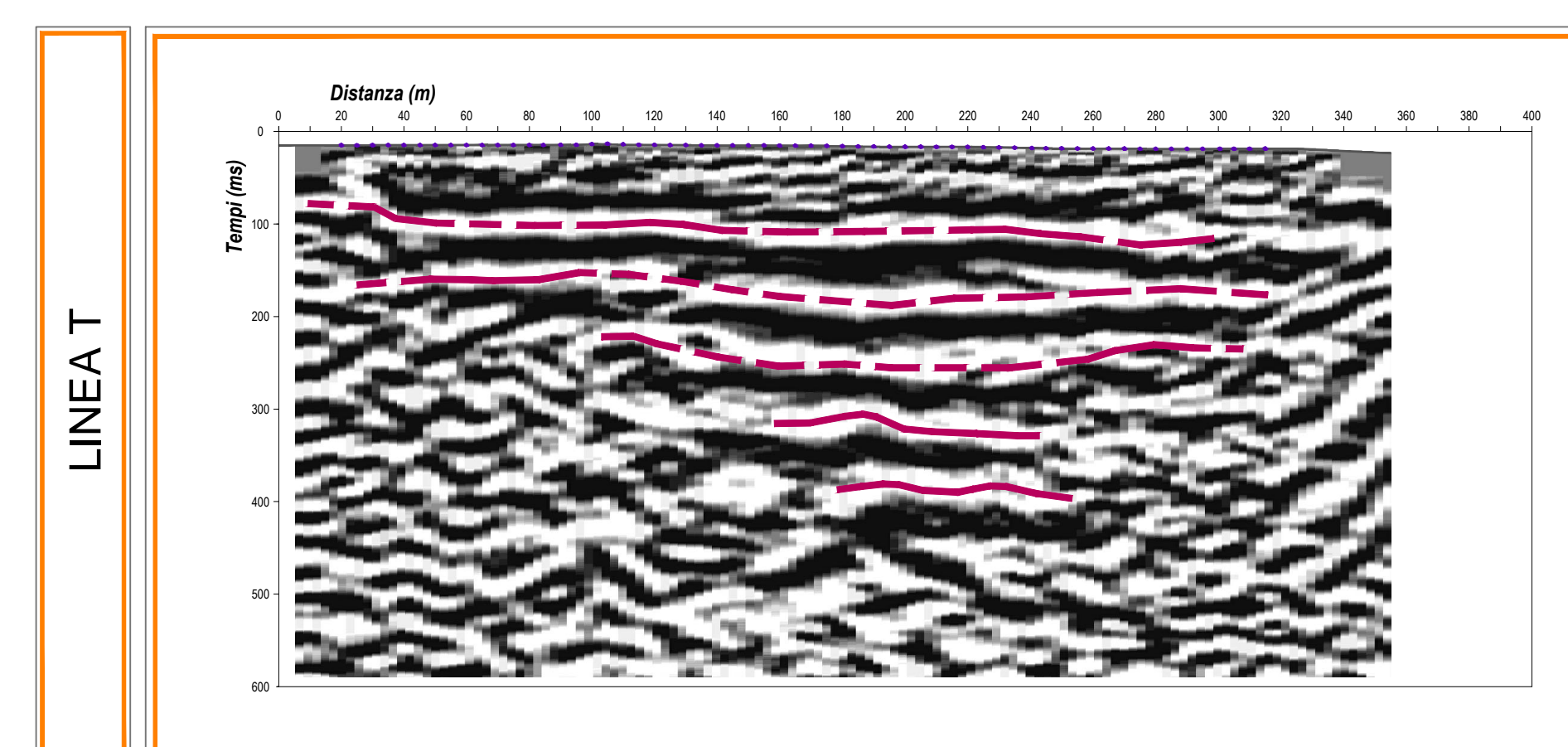
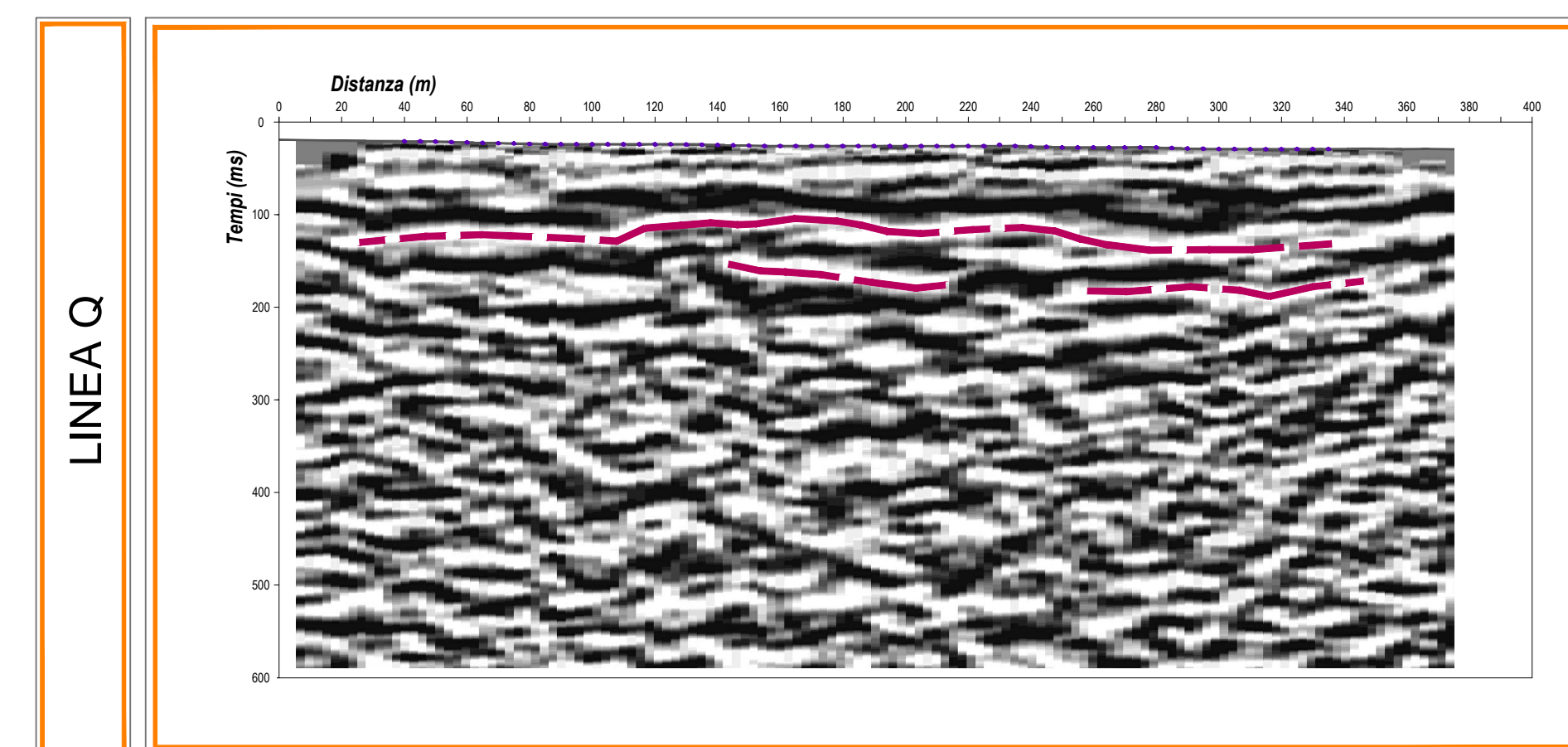
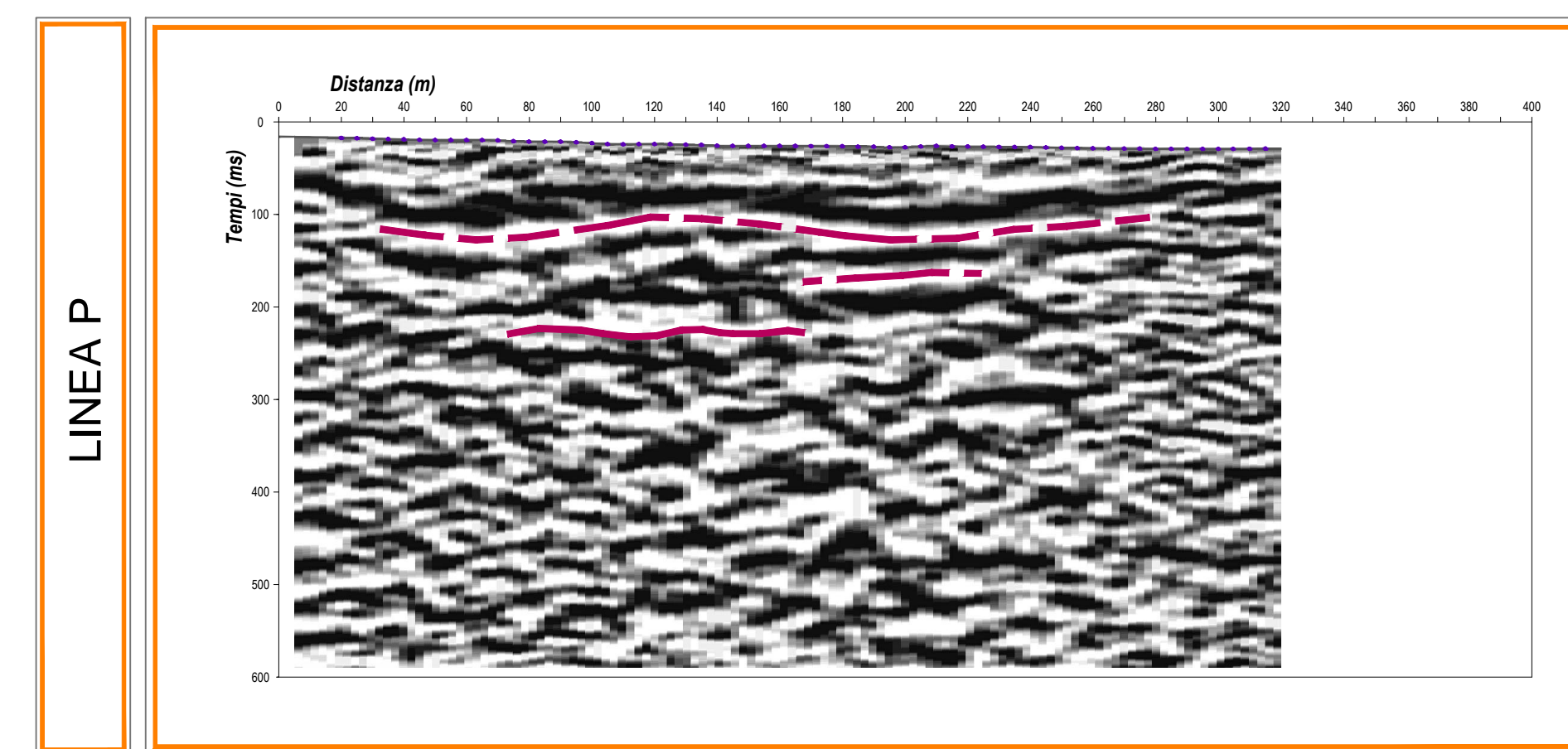
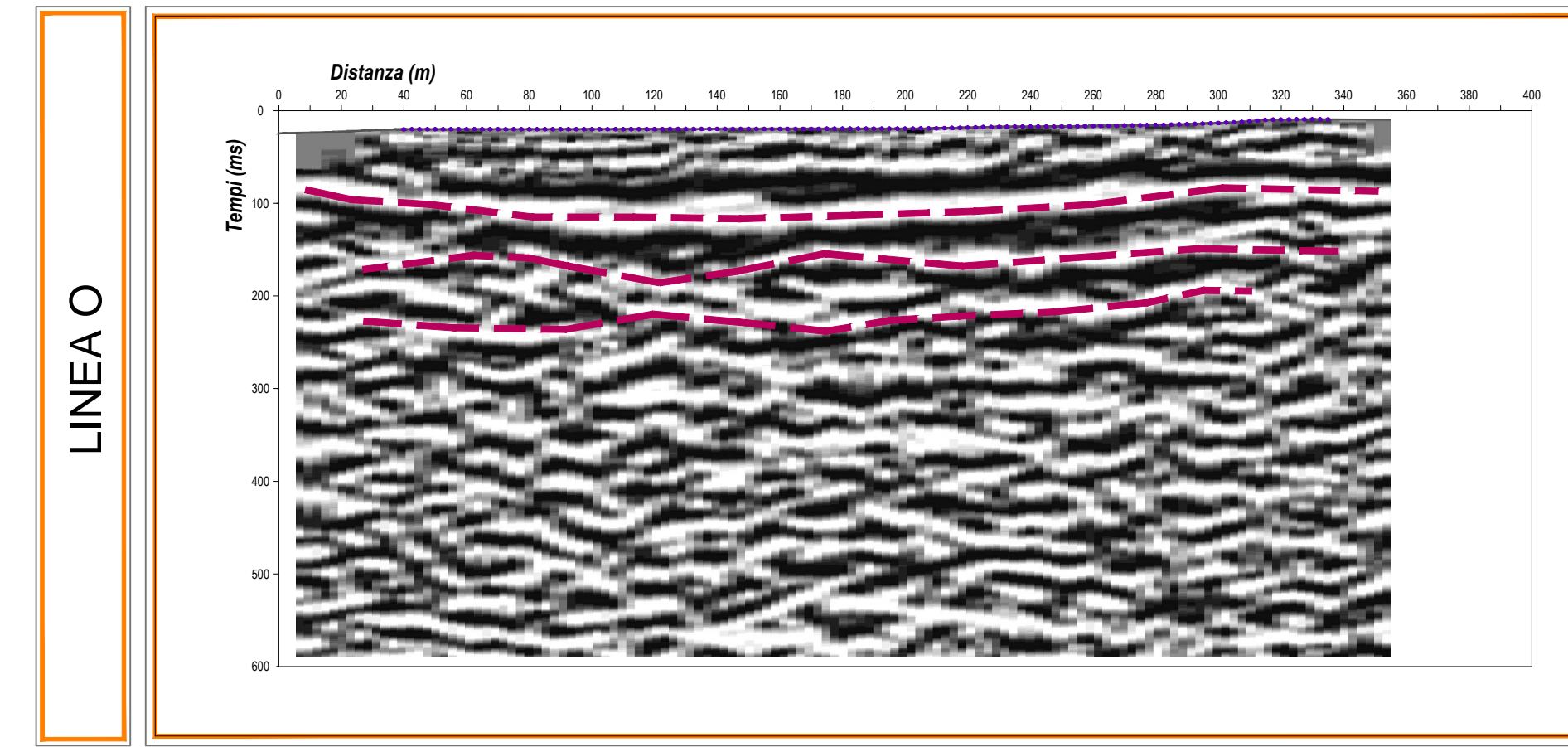
TOMOGRAFIA ELETTRICA



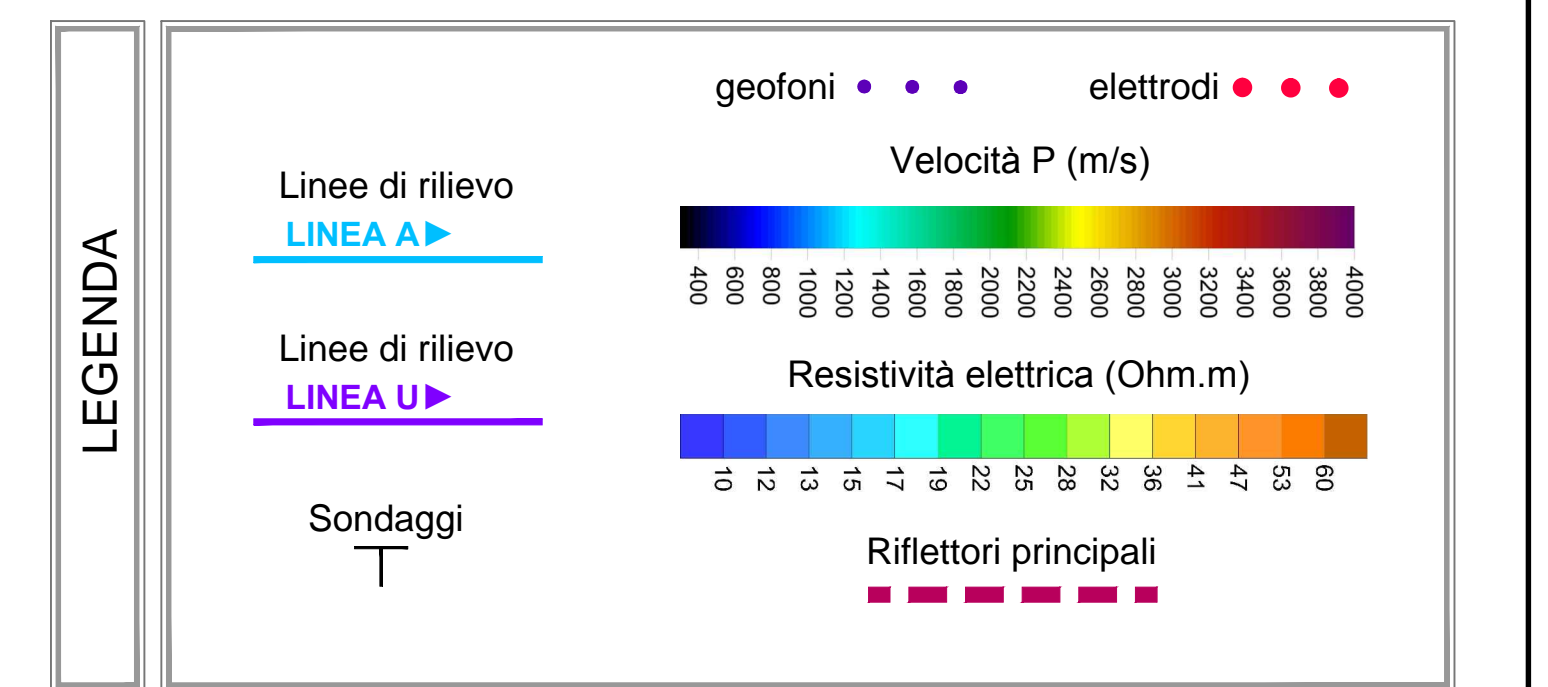
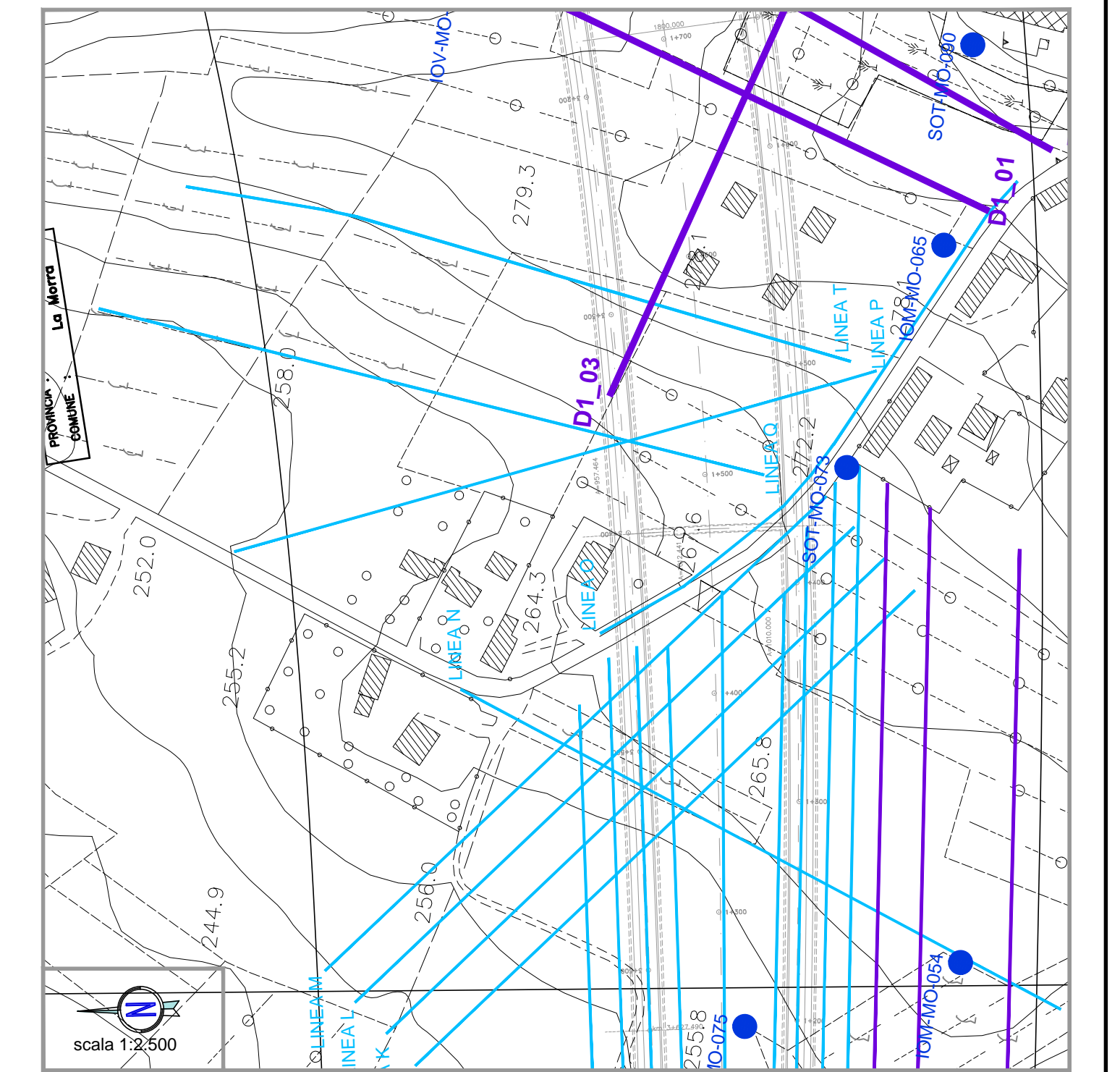
TOMOGRAFIA SISMICA A RIFRAZIONE



SISMICA A RIFLESSIONE



PLANIMETRIA GENERALE



AUTOSTRADA ASTI - CUNEO S.p.A.



COLLEGAMENTO AUTOSTRADALE
ASTI - CUNEO

TRONCO II A21 (ASTI EST) - A6 (MARENE)
LOTTO 6 RODDI - DIGA ENEL

VERIFICA DI ASSOGGETTABILITA' EX ART. 20 D.LGS. 152/06
STRALCIO DEL PROGETTO ESECUTIVO

ZONA GALLERIA - SEZIONI DI RILIEVO
TOMOGRAFIA ELETTRICA
TOMOGRAFIA SISMICA A RIFRAZIONE
SISMICA A RIFLESSIONE

Approvato:	Data:	Decisione:	Redatto:	Controllo:	Approvato:	Cartella:			
Approvato:	Data:	Decisione:	Redatto:	Controllo:	Approvato:	Cartella:	Libro	Prog.	Tip.
Approvato:	Data:	Decisione:	Redatto:	Controllo:	Approvato:	Cartella:			
Approvato:	Data:	Decisione:	Redatto:	Controllo:	Approvato:	Cartella:			1:2.000 1:2.500

PROGETTISTA e RESP. INTEGRAZIONE PRESTAZIONI SPECIALISTICHE:
SINA
Dott. Ing. Enrico Ghislandi
Alba di Milano
N° A. 16993

CONCESSIONARIA:
AUTOSTRADA ASTI - CUNEO S.p.A.

04a