

Tr. n° Sostegni esistenti da rimuovere

Tr. n° Nuovi sostegni da realizzare

↓  
Posizione nuovi sostegni



REVISIONI			ELABORATO	VERIFICATO	APPROVATO
02	08/10/2012	PRIMA REVISIONE	N.TAVANO STUDIO TAVANO	U.MARTELLINO AOT RM-PR-LIN	G.BABUSCI AOT RM-PRI
01	14/09/2012	EMISSIONE ELABORATO	N.TAVANO STUDIO TAVANO	U.MARTELLINO AOT RM-PR-LIN	G.BABUSCI AOT RM-PRI
N.	DATA	DESCRIZIONE	ELABORATO	VERIFICATO	APPROVATO

TIPOLOGIA DELL'ELABORATO	CODIFICA DELL'ELABORATO	
PLANIMETRIA	D E 23153A1 C EX 0016	

PROGETTO	TITOLO
POTENZIAMENTO CAPPUCCINI CAMERINO RICAVATO DAL DOC. TERNA	LINEA 150 kV CAPPUCCINI - CAMERINO  REGIONE MARCHE
CLASSIFICAZIONE DI SICUREZZA	DOCUMENTAZIONE FOTOGRAFICA

NOME DEL FILE	SCALA CAD	FORMATO	SCALA	FOGLIO
DE23153A1CEX0016.dwg	1 unità = 1 metro	420*297	---	/

m11000180-000  
Questo documento contiene informazioni di proprietà Terna S.p.A. e deve essere utilizzato esclusivamente dal destinatario in relazione alle finalità per le quali è stato ricevuto. E' vietata qualsiasi forma di riproduzione o di divulgazione senza l'esplicito consenso di Terna S.p.A.  
This document contains information proprietary to Terna S.p.A. and it will have to be used exclusively for the purposes for which it has been furnished. Whichever shape of spreading or reproduction without the written permission of Terna S.p.A. is prohibit.

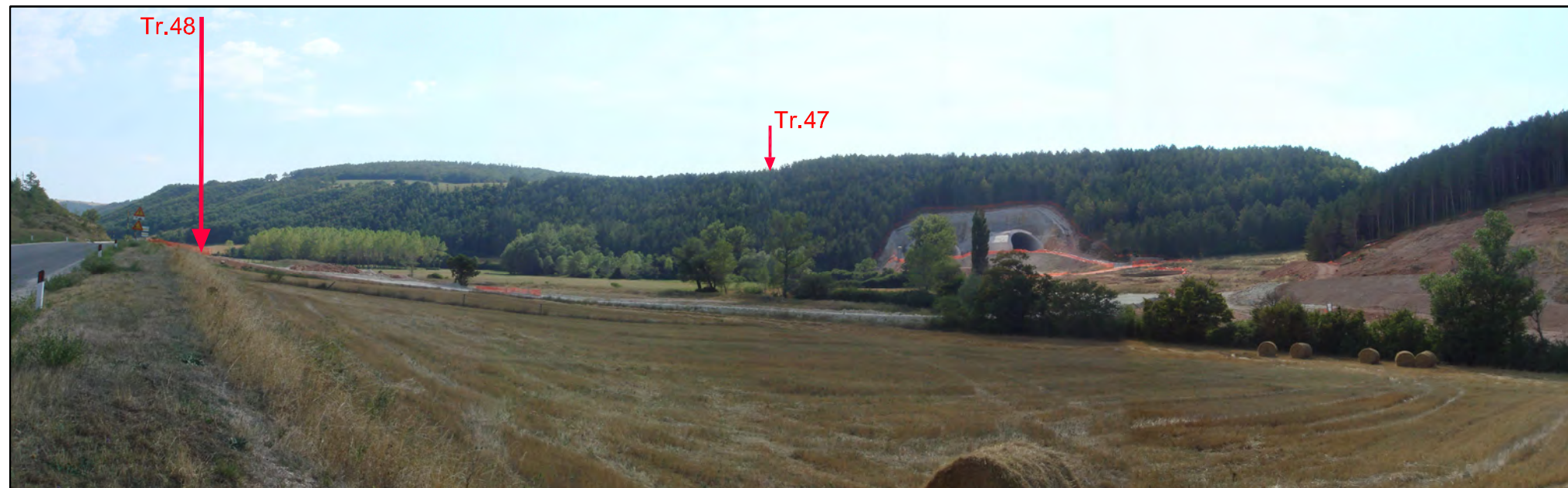


Foto 01



Foto 02



Foto 03



Foto 04



Foto 05

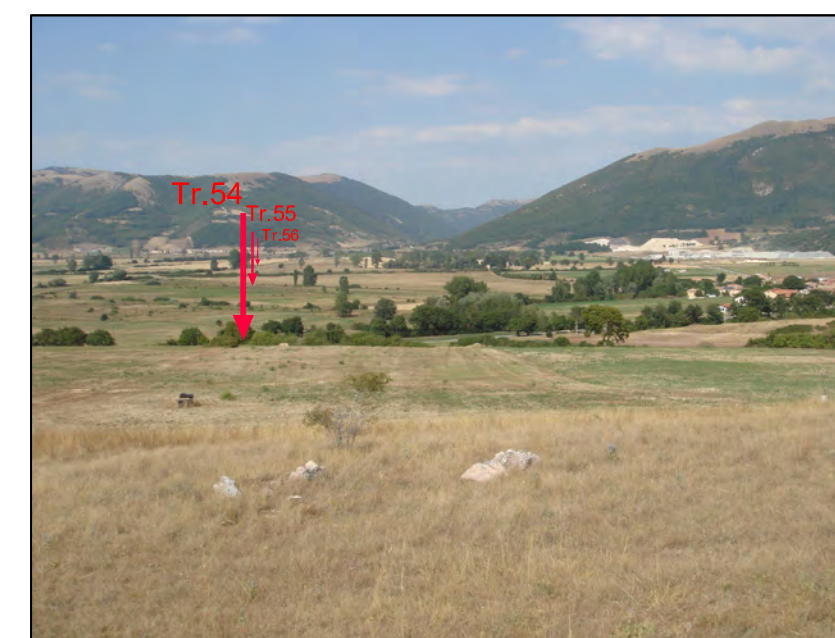


Foto 06

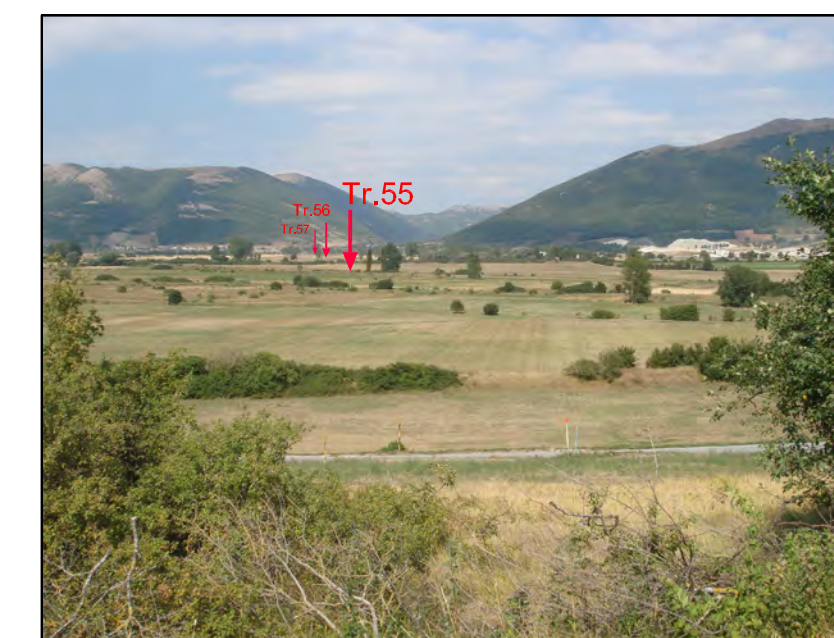


Foto 07



Foto 08

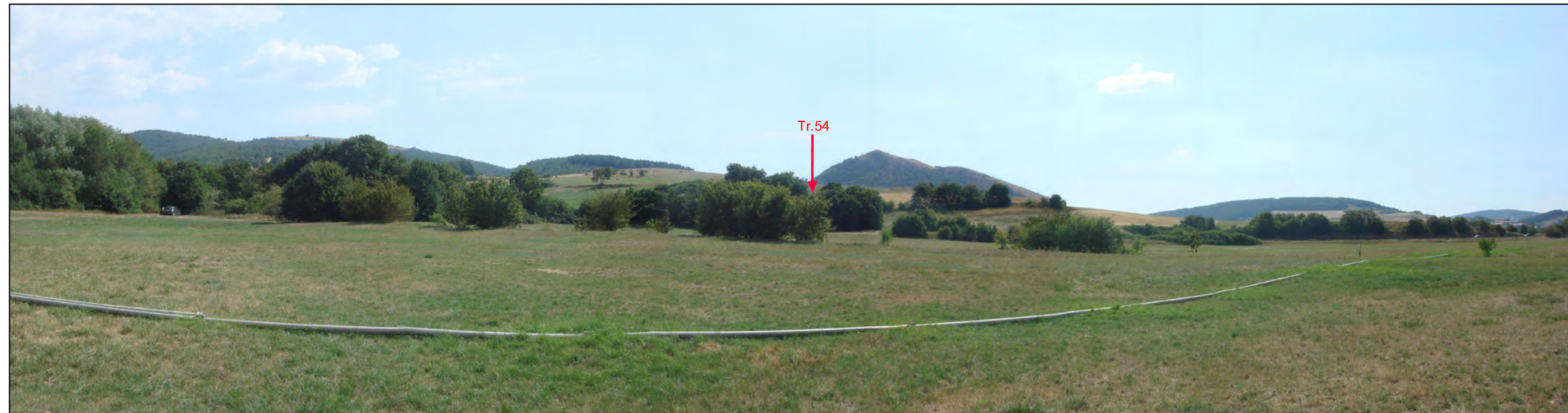


Foto 09



Foto 10



Foto 11

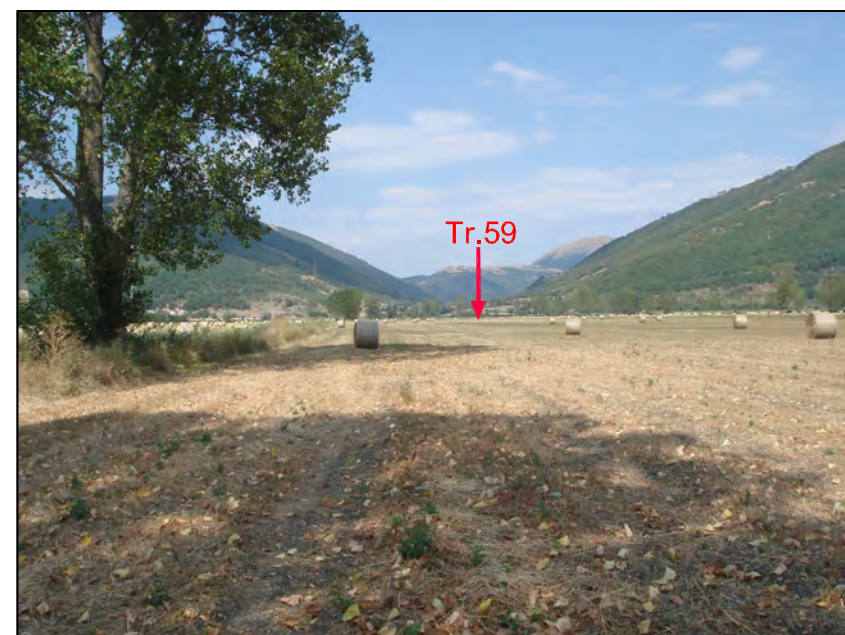


Foto 12

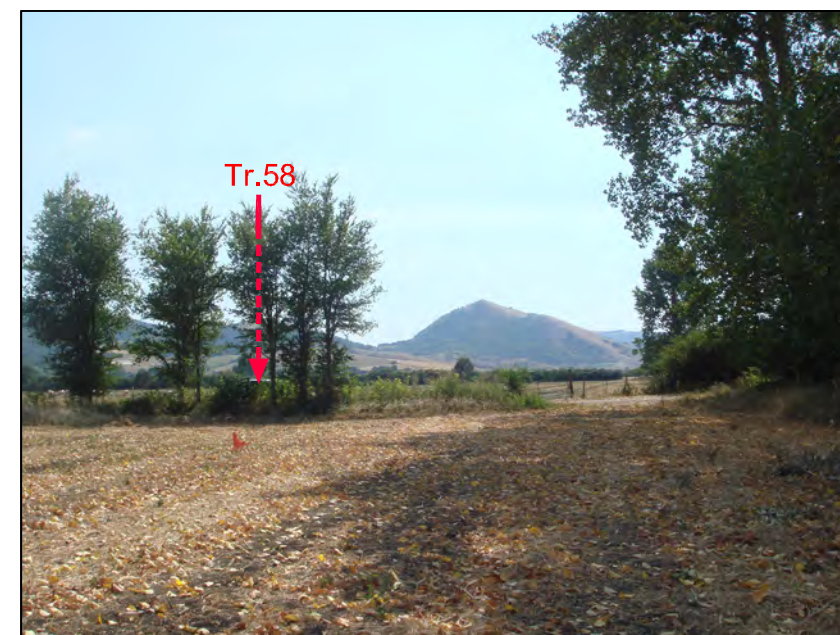


Foto 13

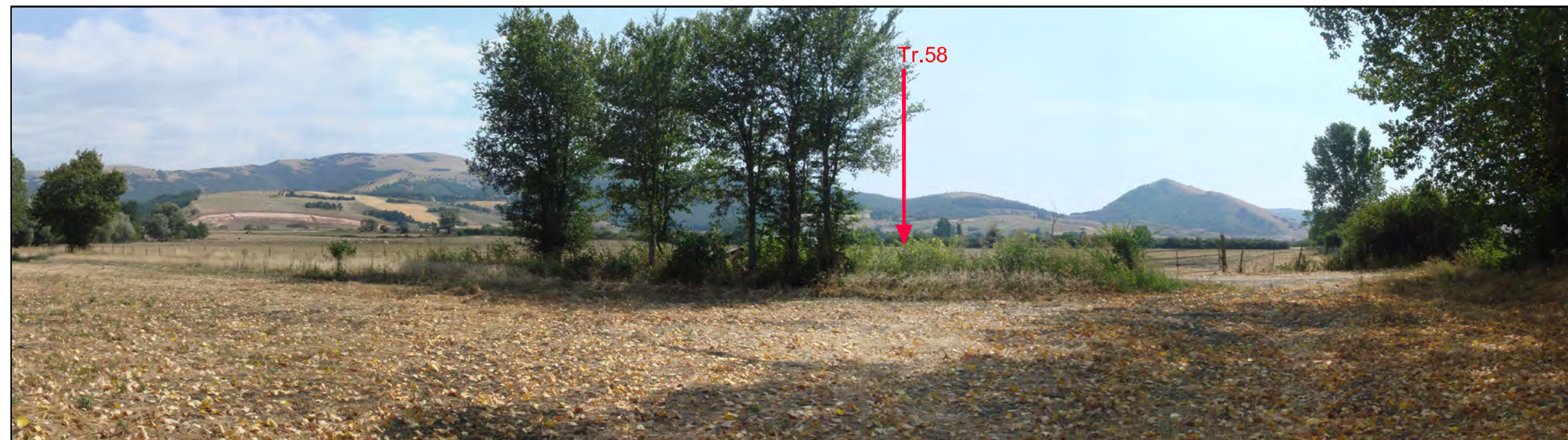


Foto 14



Foto 15

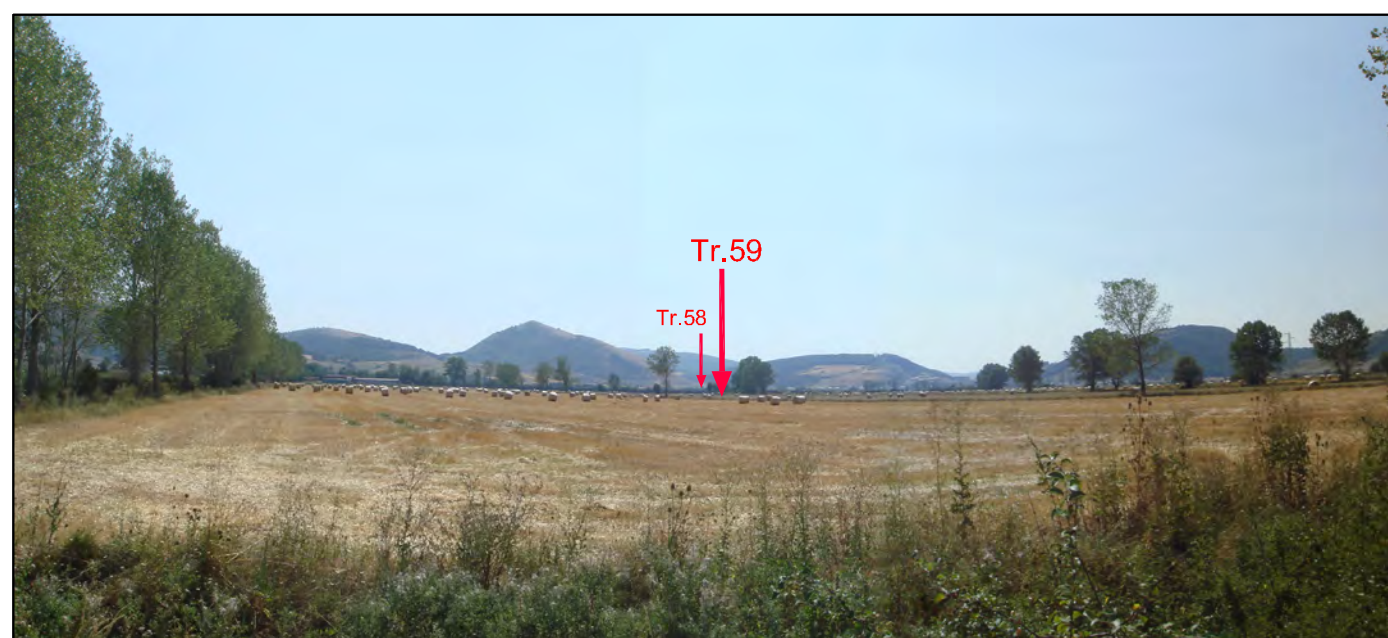


Foto 16

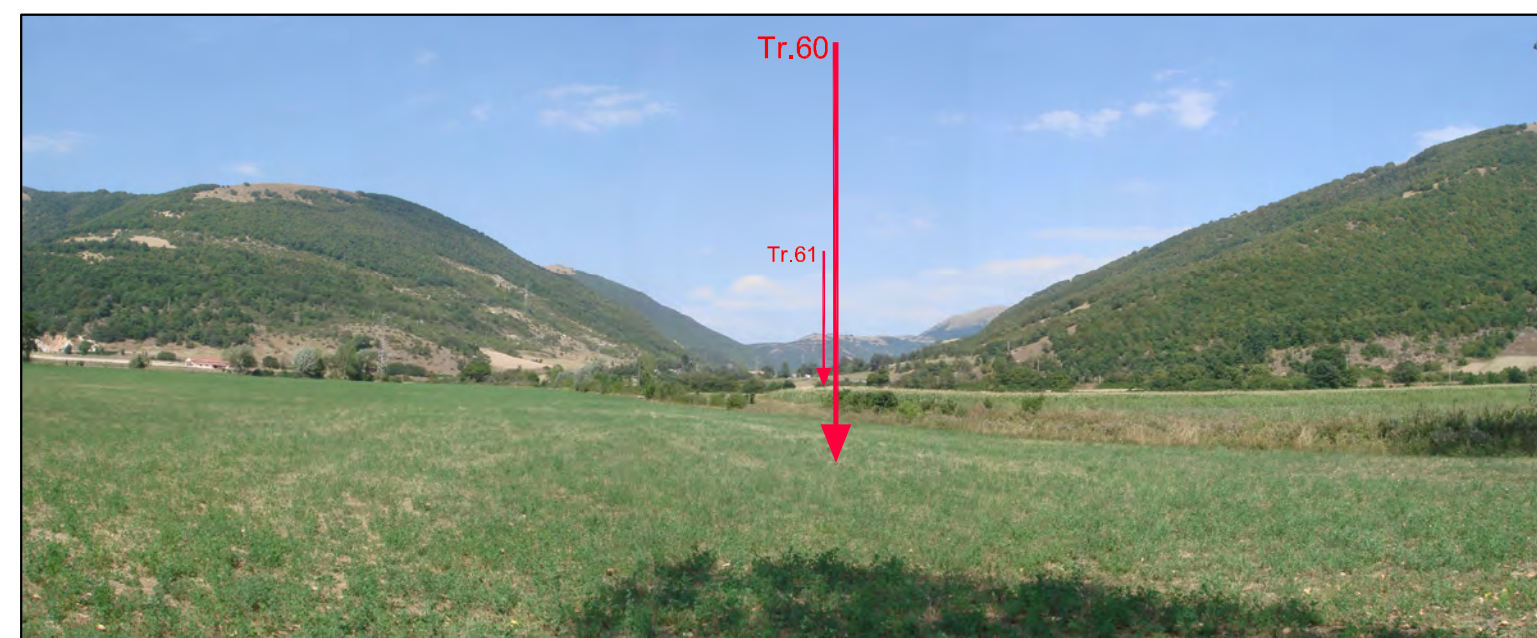


Foto 17

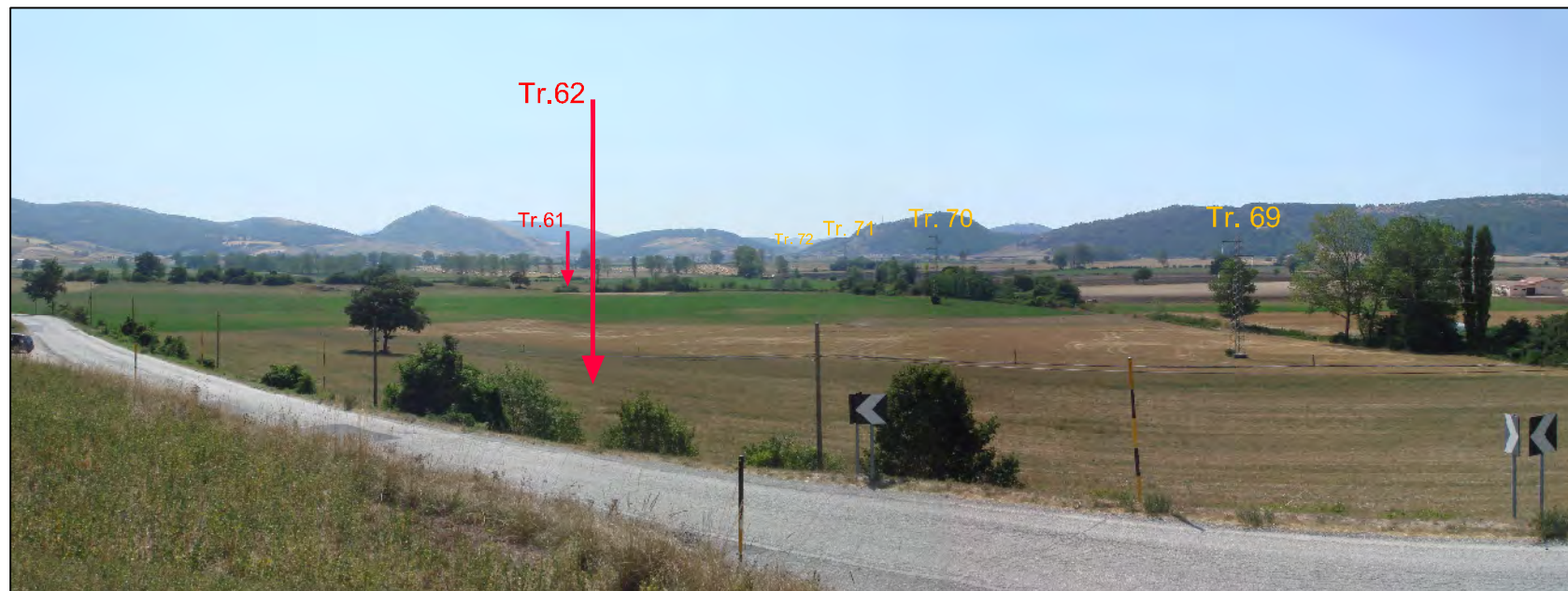


Foto 18

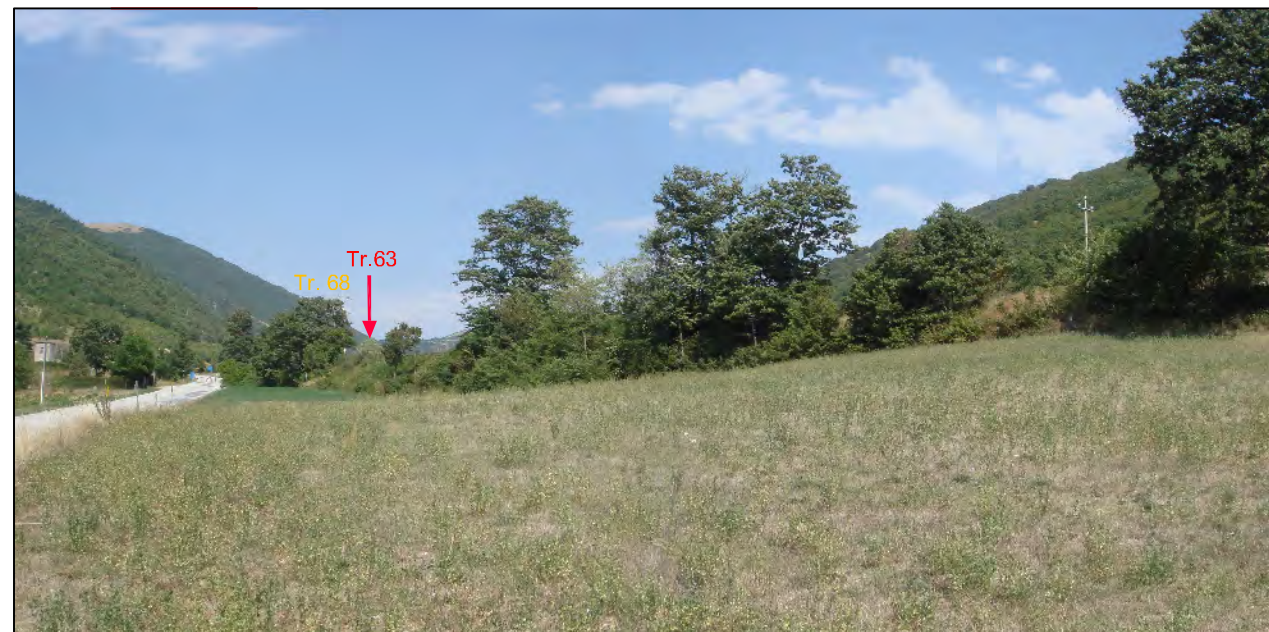


Foto 19

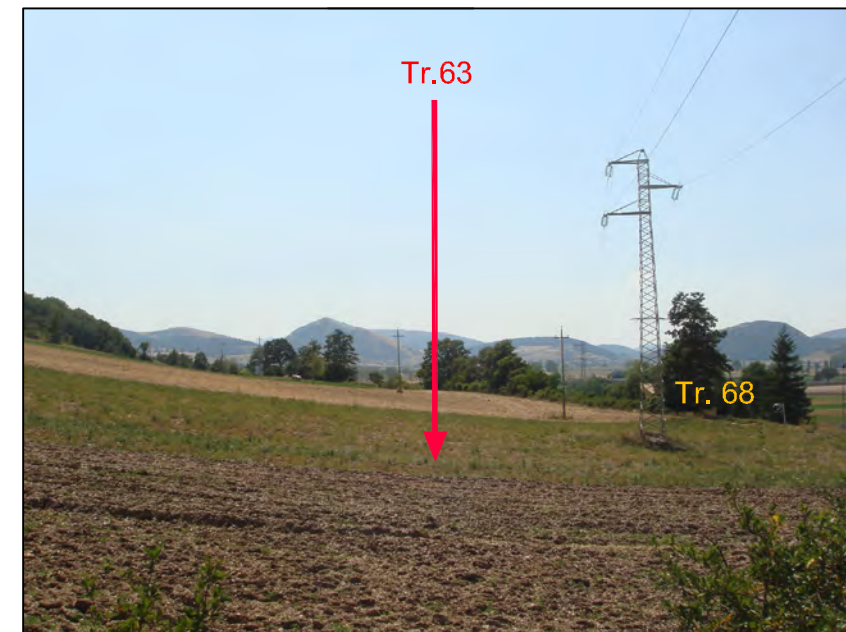


Foto 20

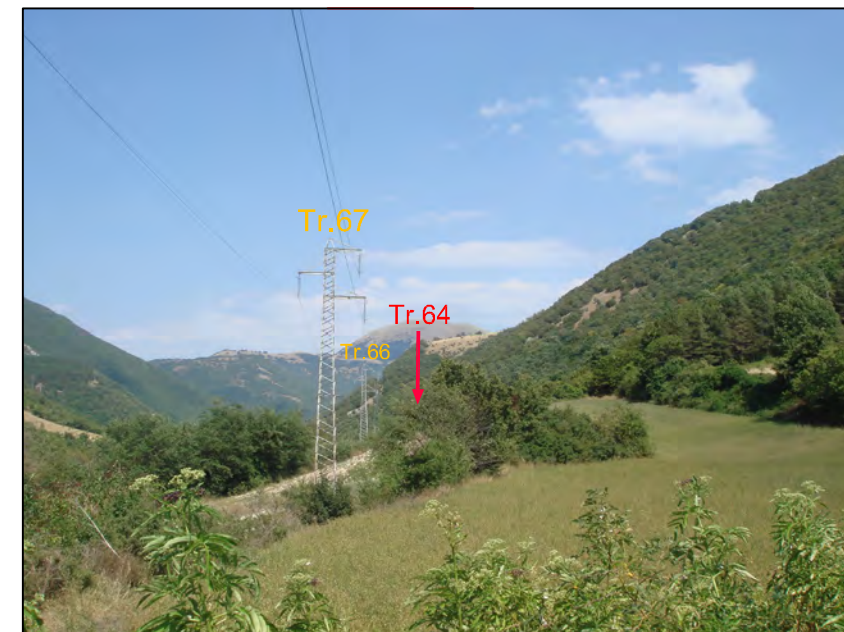


Foto 21

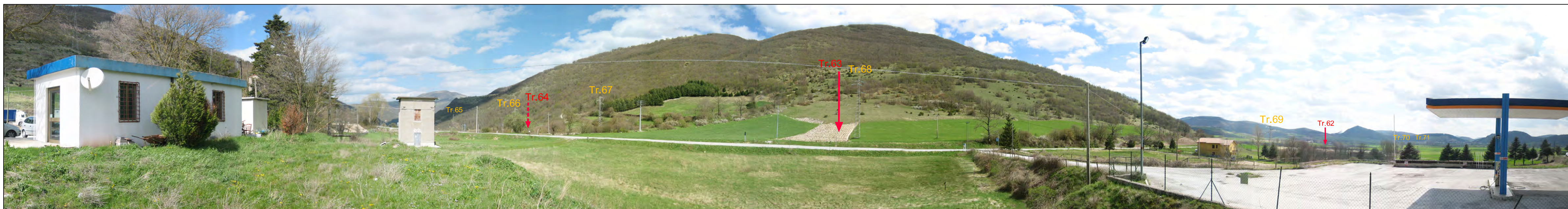


Foto 22

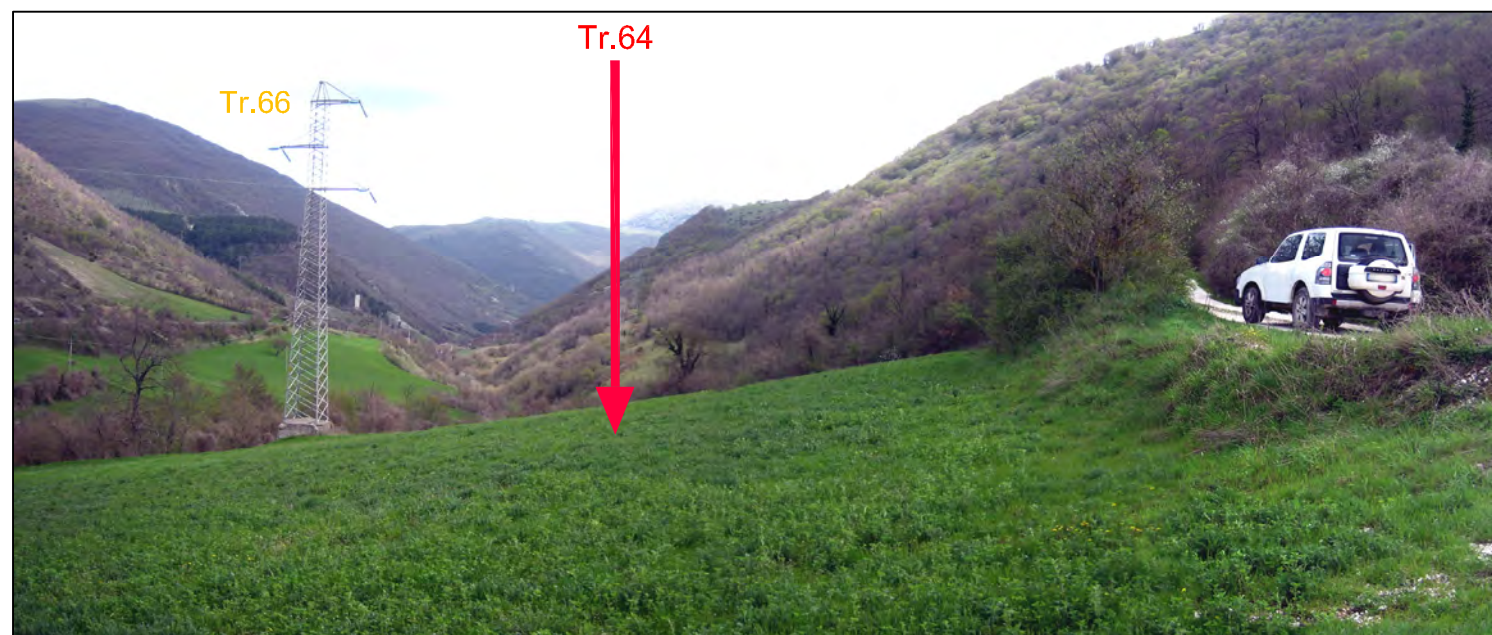


Foto 23



Foto 24 Sterrata d'accesso ai Tr.67 e 68



Foto 25 Pista d'accesso ai Tr.65 e 64

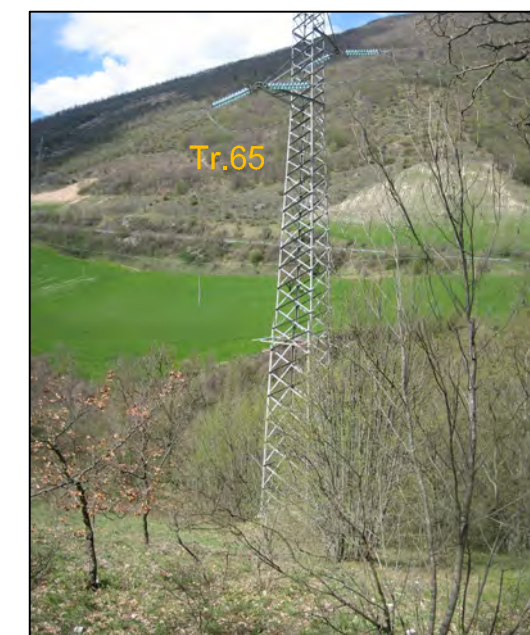


Foto 26



Foto 27 Tr.64 e a seguire Tr.63 e 62

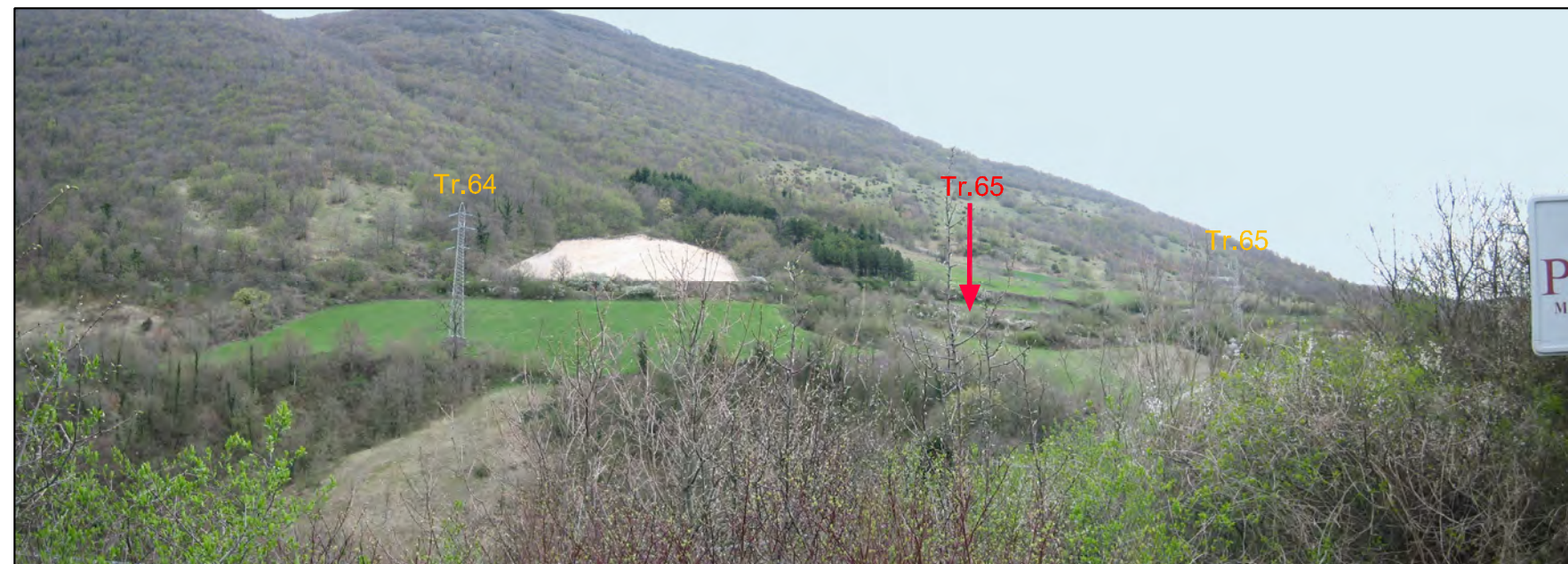


Foto 28



Foto 29



Foto 30 Accesso ai Tr.67 e 68



Foto 31 Bivio: a sx accesso al Tr.67, a dx quello al Tr.68



Foto 32 Pista d'accesso al Tr.67



Foto 33

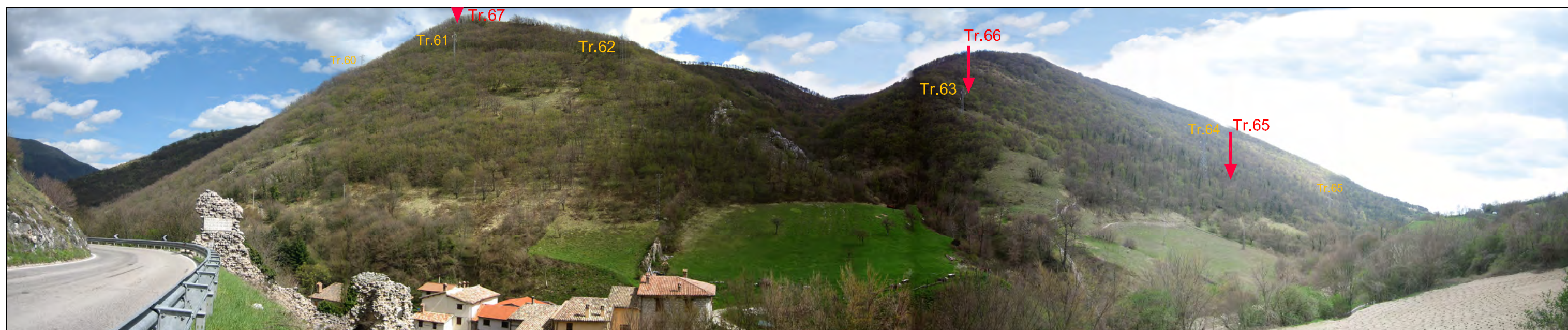


Foto 34



Foto 35



Foto 36 Accesso al Tr.68



Foto 37 Pista d'arroccamento al Tr.68

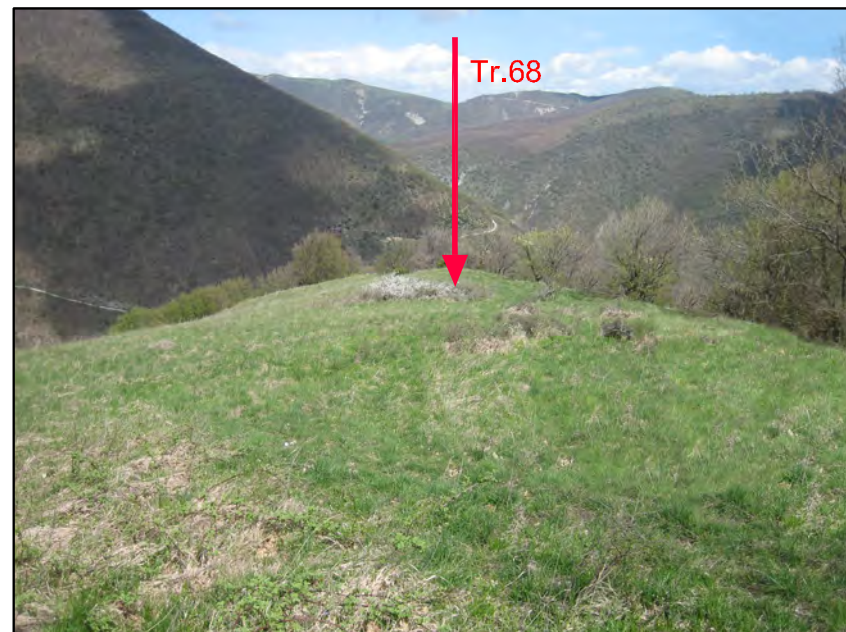


Foto 38



Foto 39



Foto 40



Foto 41

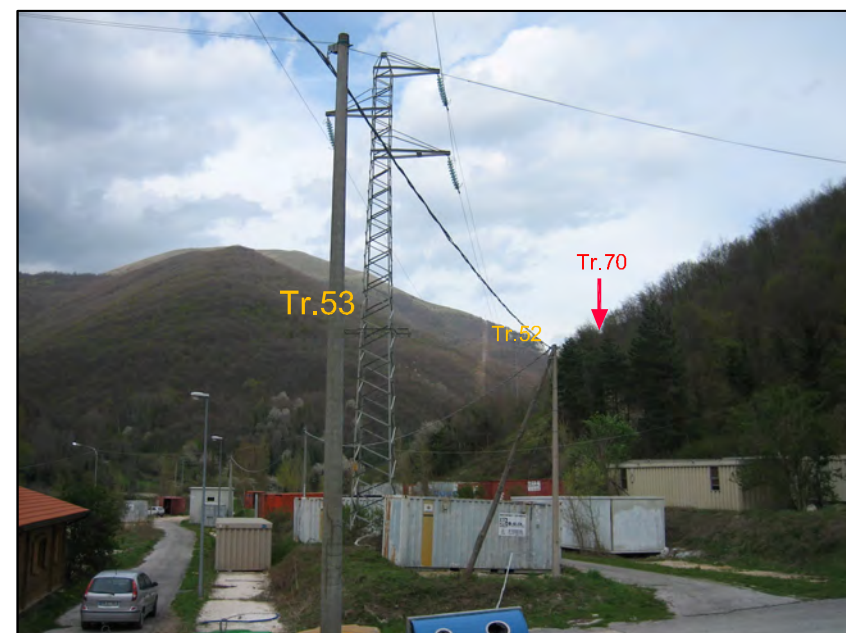


Foto 42

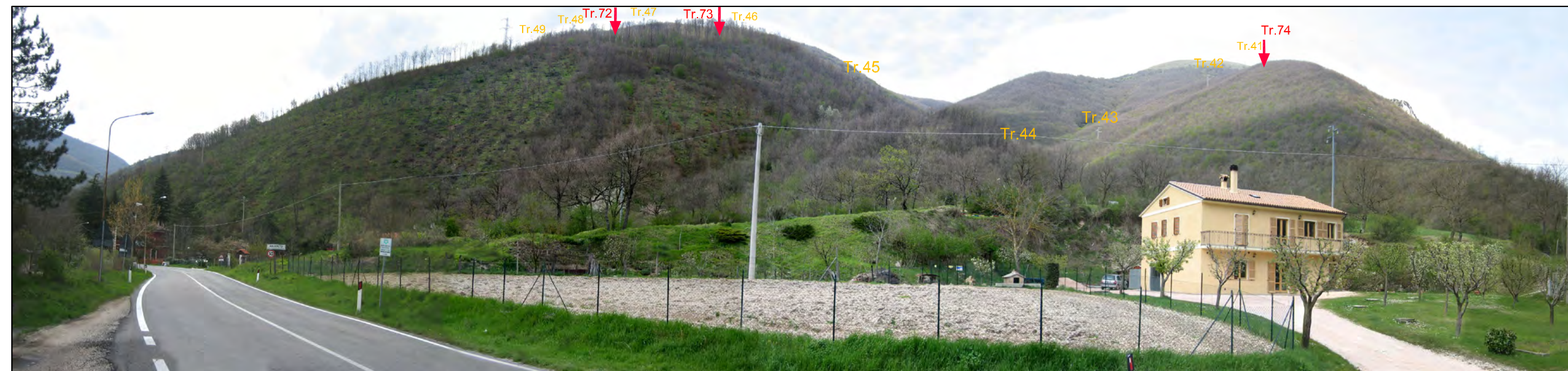


Foto 43



Foto 44



Foto 45

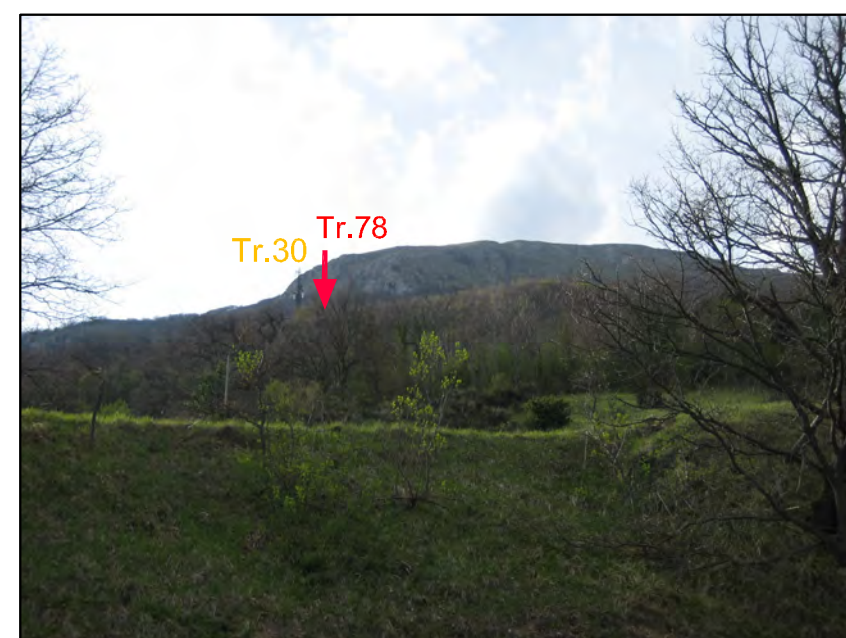


Foto 46



Foto 47 Accesso ai Tr.31-36



Foto 48 Pista d'accesso ai Tr.31-36





Foto 49



Foto 50 Pista d'arrocamento al Tr.33



Foto 51 Accesso zona Tr.32 e limitrofi



Foto 52



Foto 53 Pista d'arrocamento al Tr.34

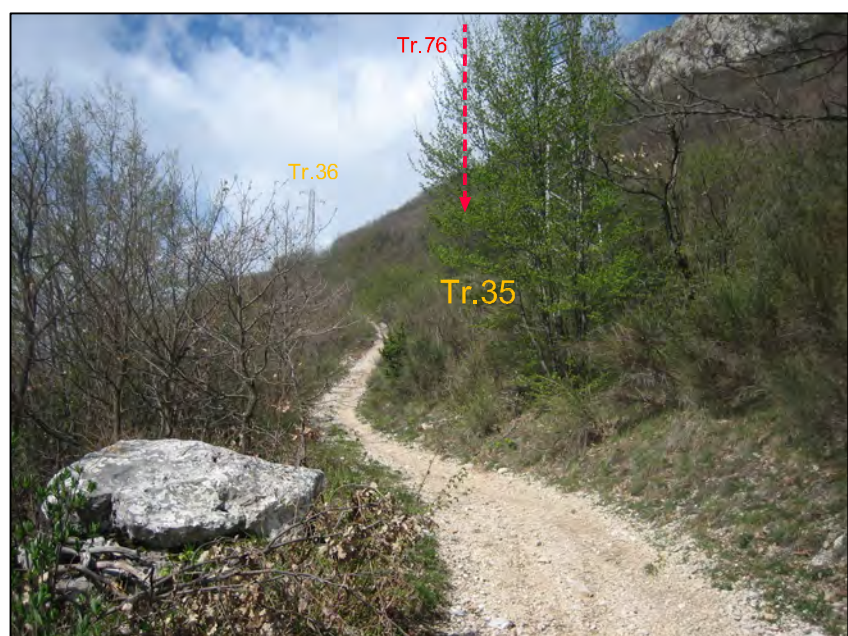


Foto 54

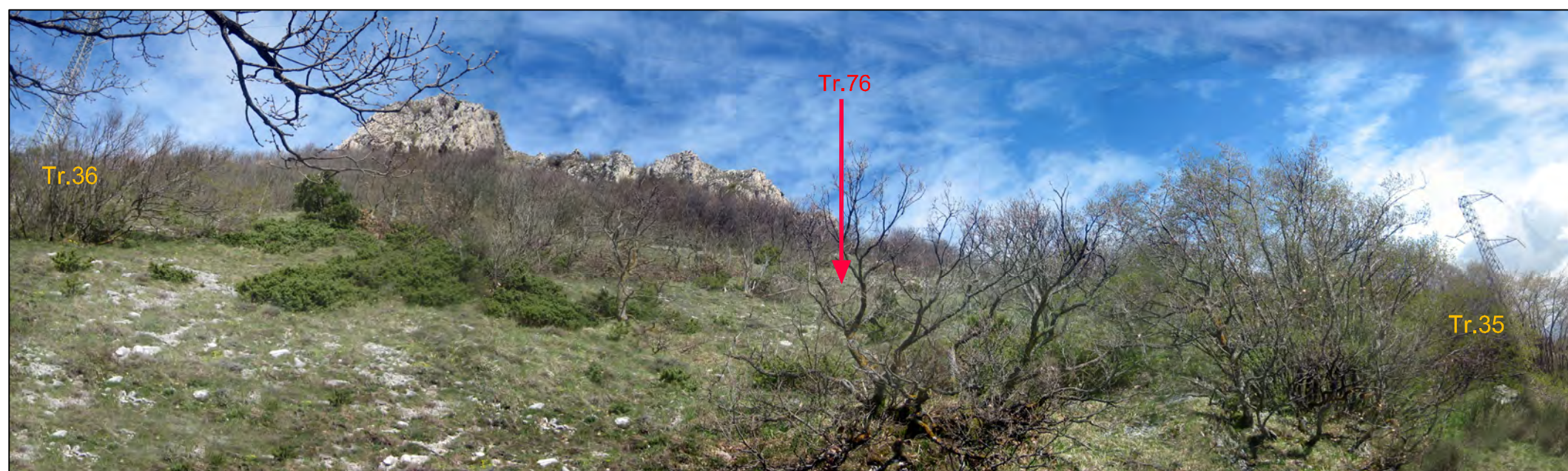


Foto 55



Foto 56



Foto 57



Foto 58

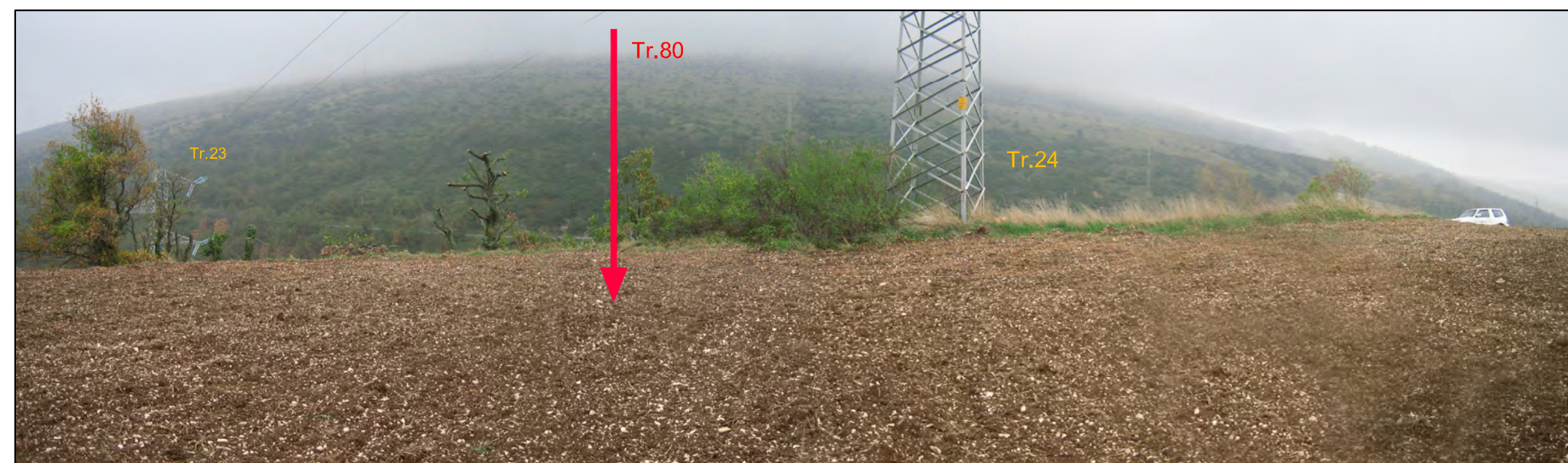


Foto 59

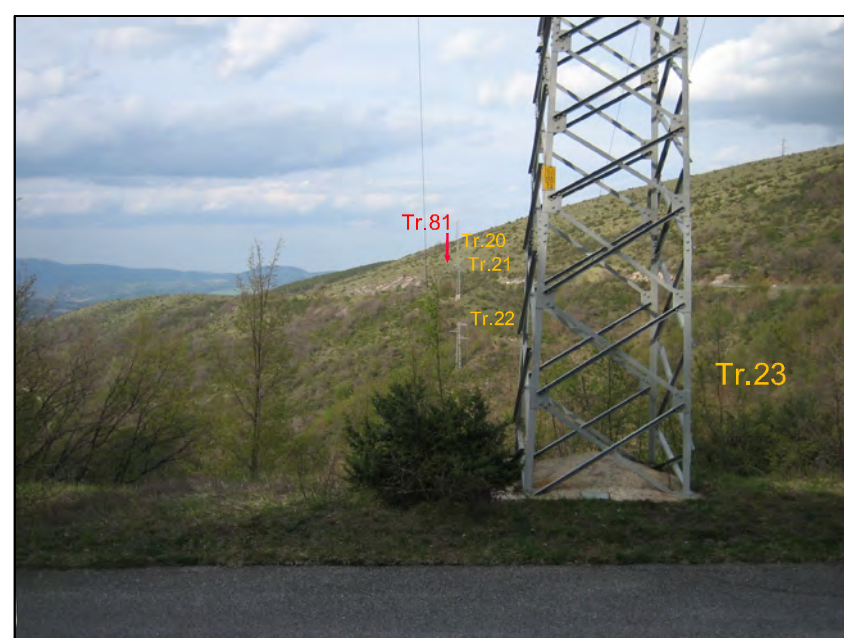


Foto 60

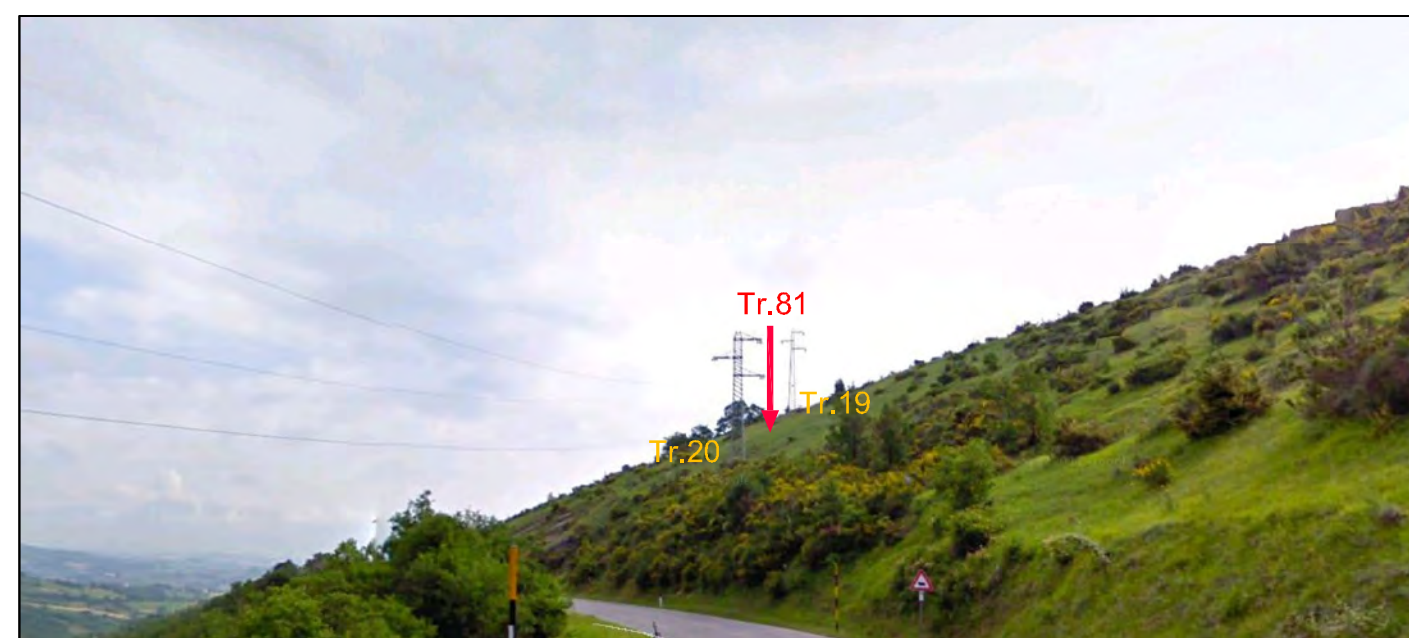


Foto 61



Foto 62



Foto 63 Base del Tr.19



Foto 64 Base del Tr.18



Foto 65

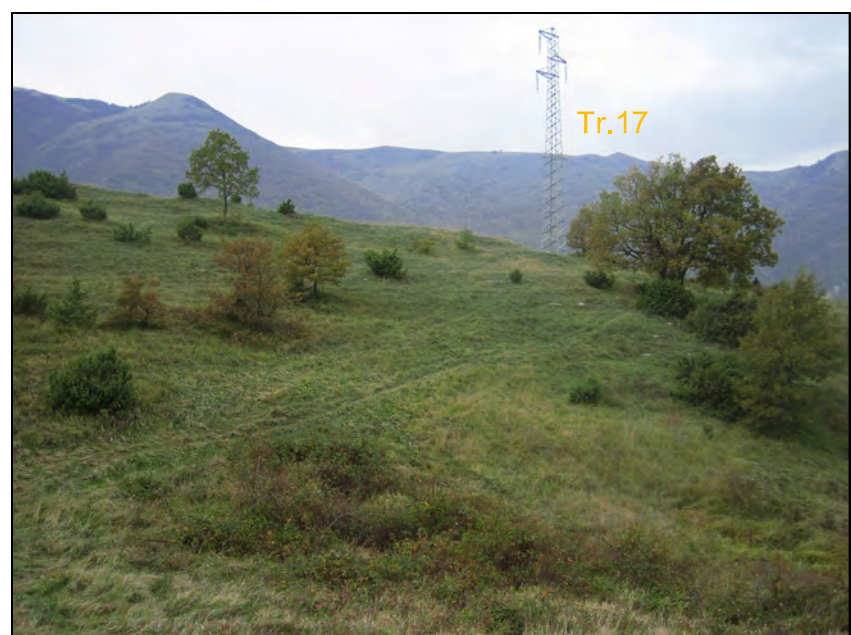


Foto 66



Foto 67



Foto 68



Foto 69 Accesso al Tr.16



Foto 70



Foto 71



Foto 72



Foto 73 Avvicinamento Tr.85



Foto 74

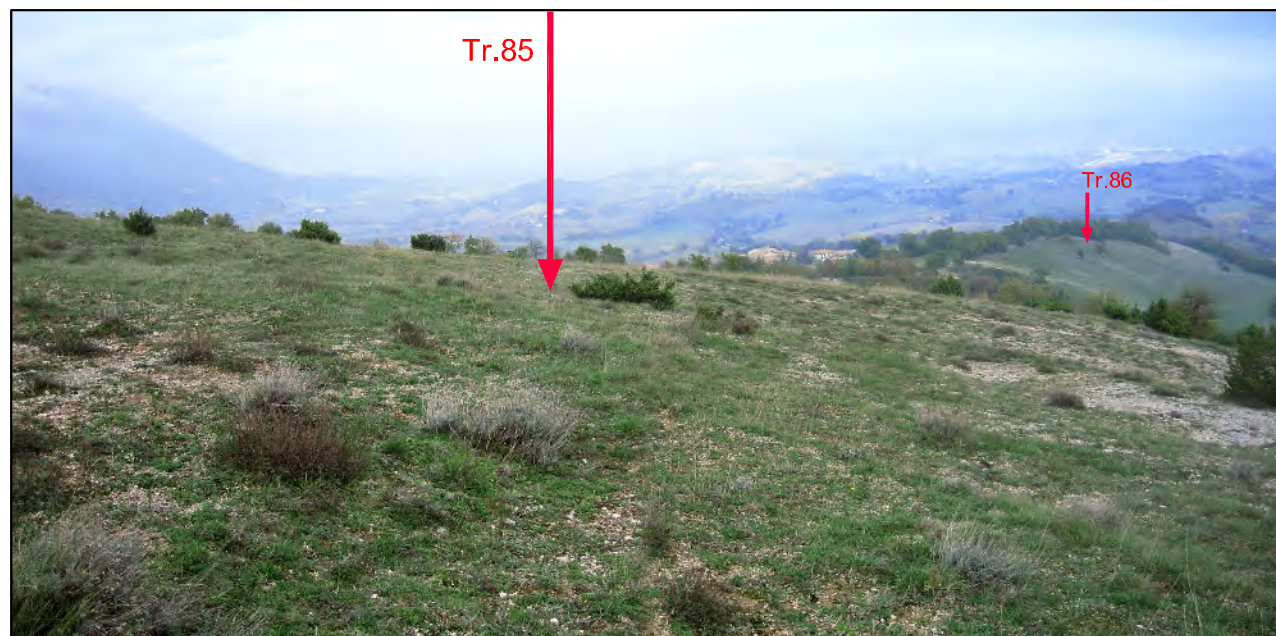


Foto 75



Foto 76 Avvicinamento Tr.84 e 85



Foto 77 Avvicinamento Tr.84 e 85



Foto 78



Foto 79



Foto 80 Avvicinamento al Tr.86



Foto 81



Foto 82

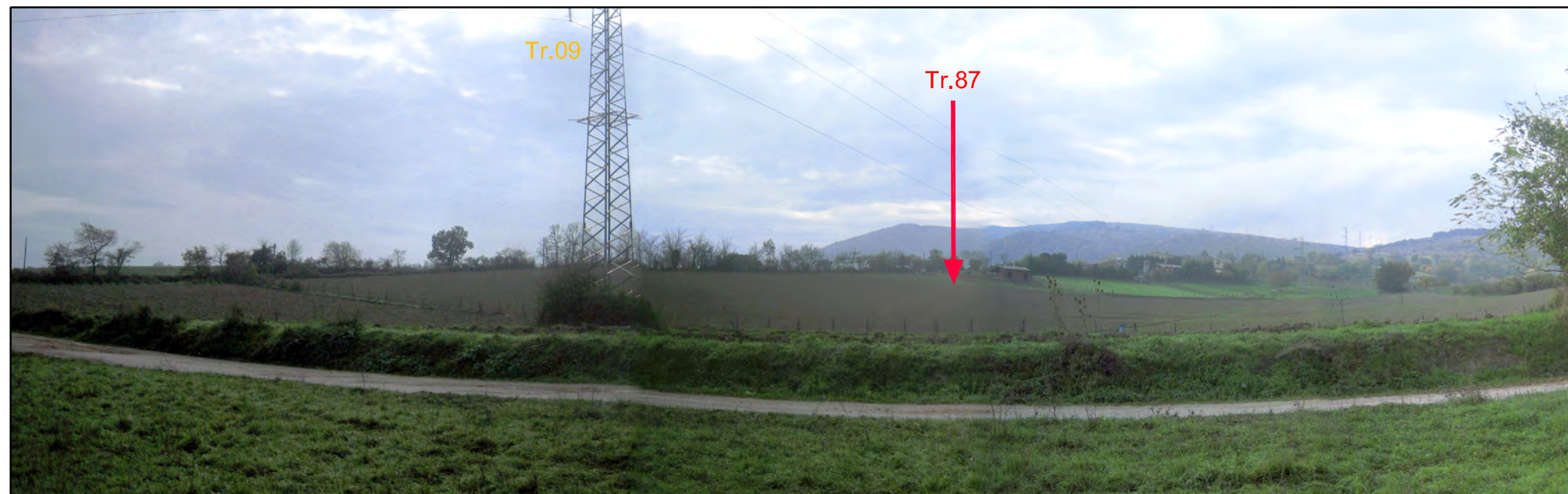


Foto 83

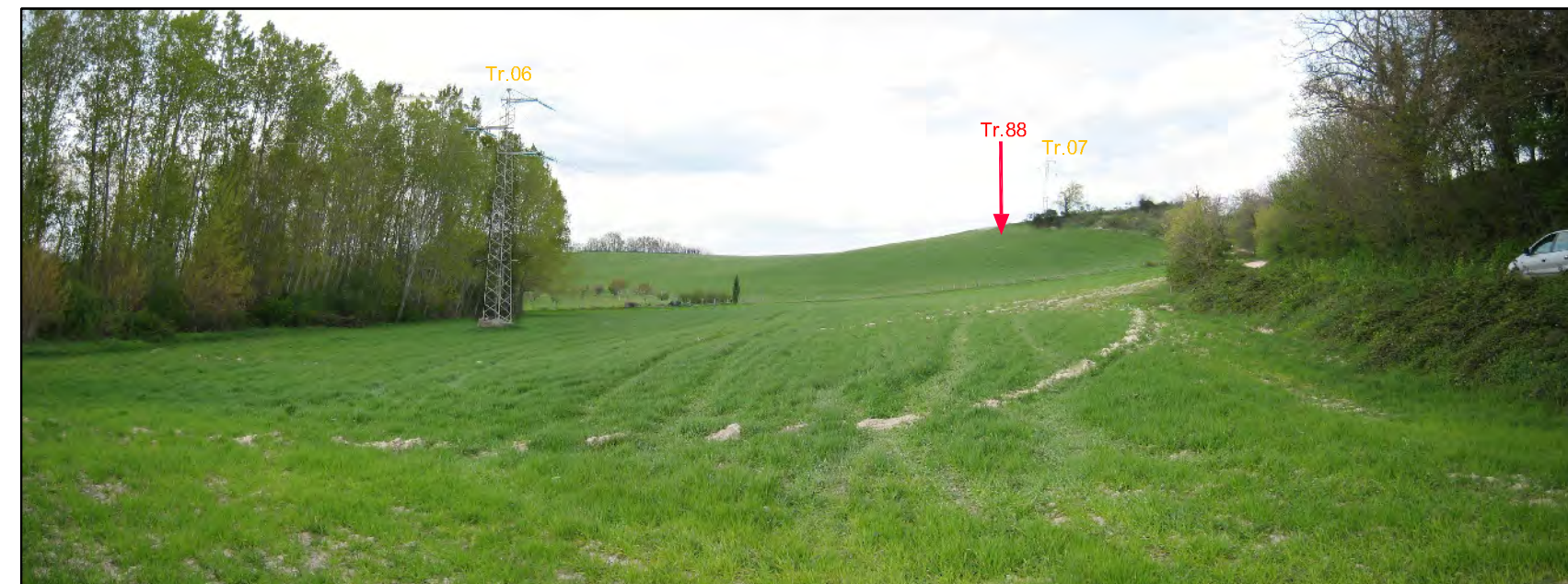


Foto 84



Foto 85



Foto 86 Avvicinamento al Tr.89



Foto 87



Foto 88

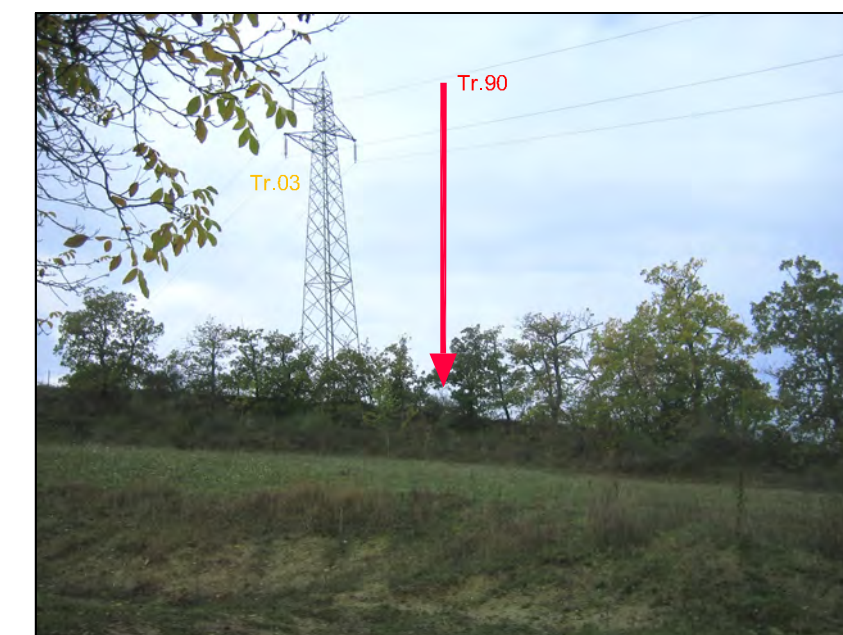


Foto 89

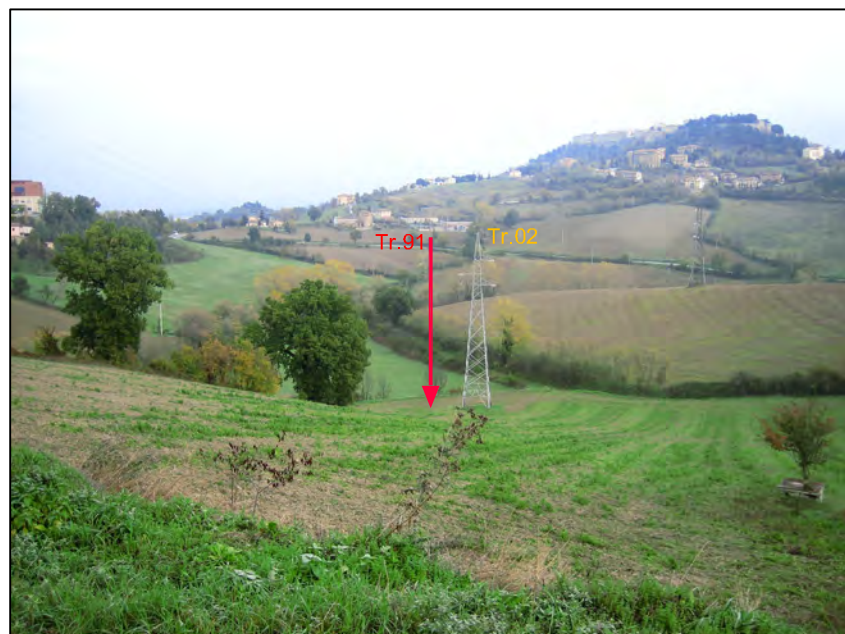


Foto 90



Foto 91



Foto 92



Foto 93 Accesso ai Tr.91 e 92



Foto 94



Foto 95 Il Tr.93 conferma il sito attuale.