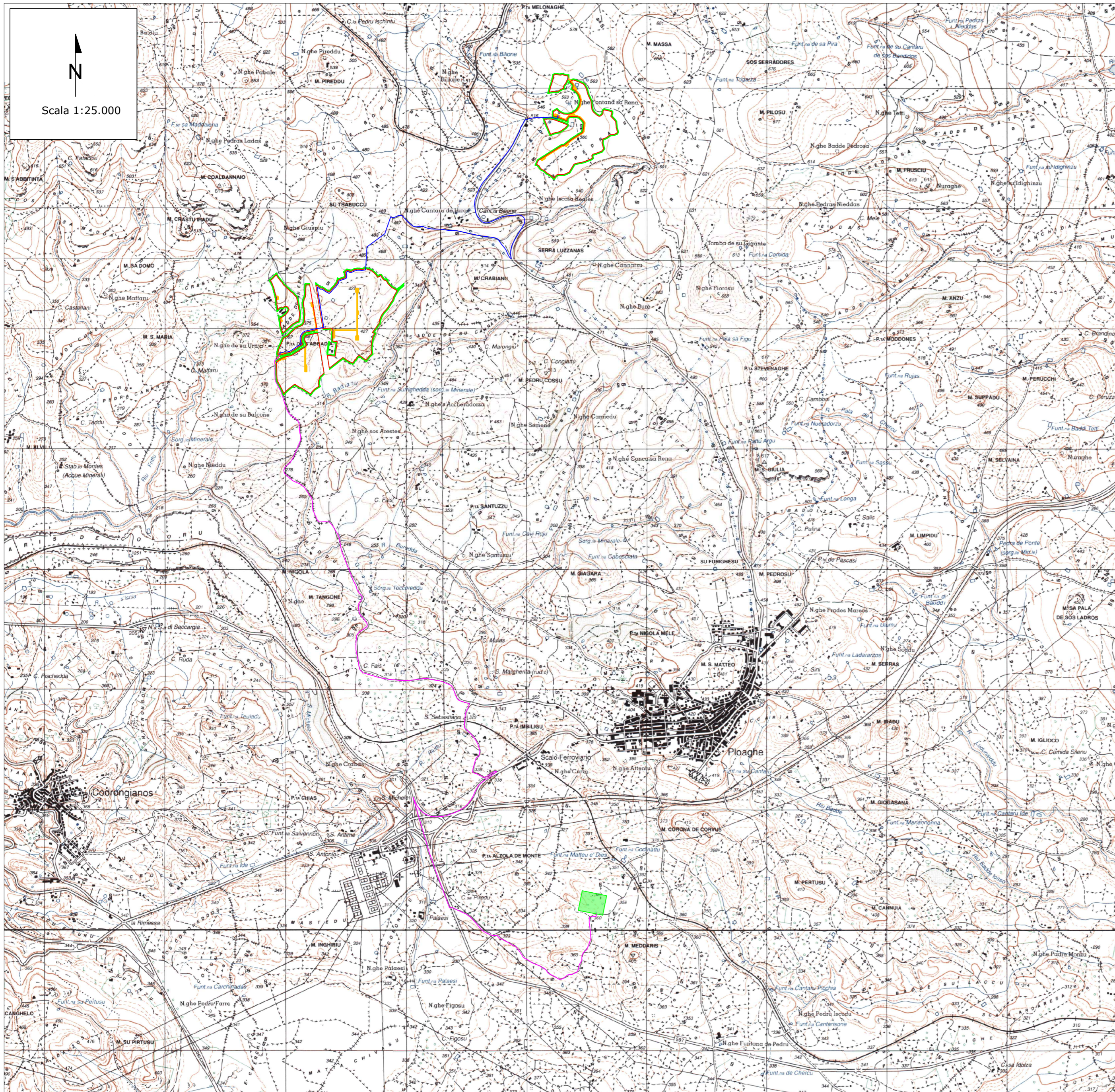









INQUADRAMENTO TERRITORIALE DELL'INTERVENTO SU CARTA IGM 1:25.000






 Scala 1:25.000

LEGENDA

-  Recinzione d'impianto
-  Cavidotto di connessione
-  Cavidotto di impianto
-  Viabilità d'impianto
-  Opere di mitigazione a verde d'impianto
-  Stazione Elettrica (SE) a 380/220/150 kV della RTN denominata "Codrongianos"


 Ingegnere
 L. Spaccino
 N.° 123456789
 A. 999
 P. 123456789

00	15/12/2023	EMISSIONE			A.Fata	L.Spaccino	
REV.	DATE	DESCRIPTION	PREPARED	CHECKED	APPROVED		
		PROJECT: Progetto di un impianto agrivoltico denominato "Masala", di potenza pari a 48,76 MWp, e delle relative opere di connessione. Da realizzarsi nei comuni di Ploaghe (SS) e Codrongianos (SS).					
		FILE NAME: LS16943.ENG.TAV.001_00_INQUADRAMENTO DELL'INTERVENTO SU BASE IGM IN SCALA 1 25.000.DWG	CLASSIFICATION: Company	FORMAT: A2	SCALE: 1:25.000	PLOT SCALE: 1:1	SHEET: 1 di / of 1
CLIENT VALIDATION		TITLE: Inquadramento dell'intervento su base IGM in scala 1 25.000					
APPROVED BY		UTILIZATION SCOPE: Basic Design	CLIENT CODE				
		PLANT	GROUP	DOC	PROGRESSIVE	REVISION	
		LS16943	ENG	TAV	001	00	