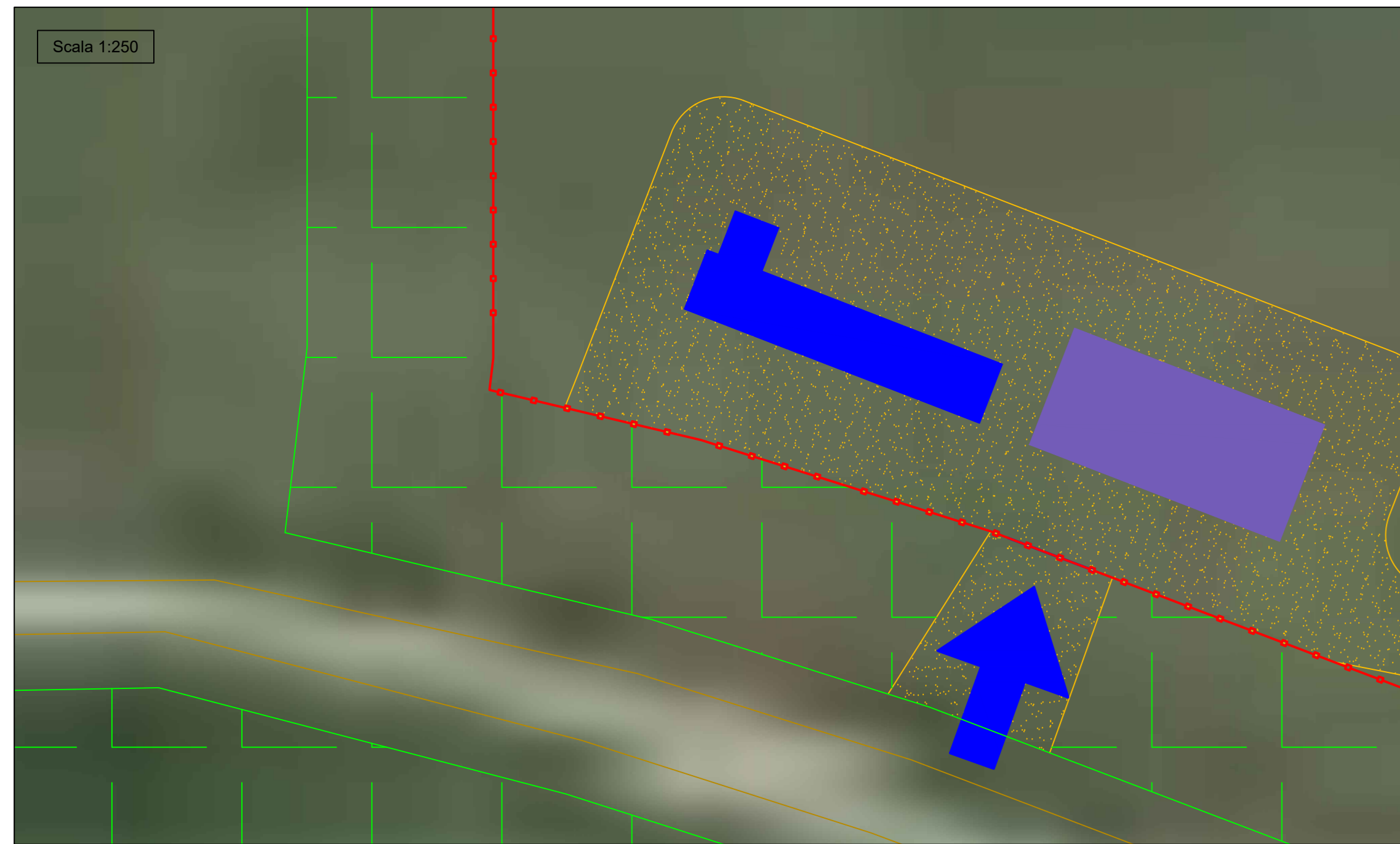
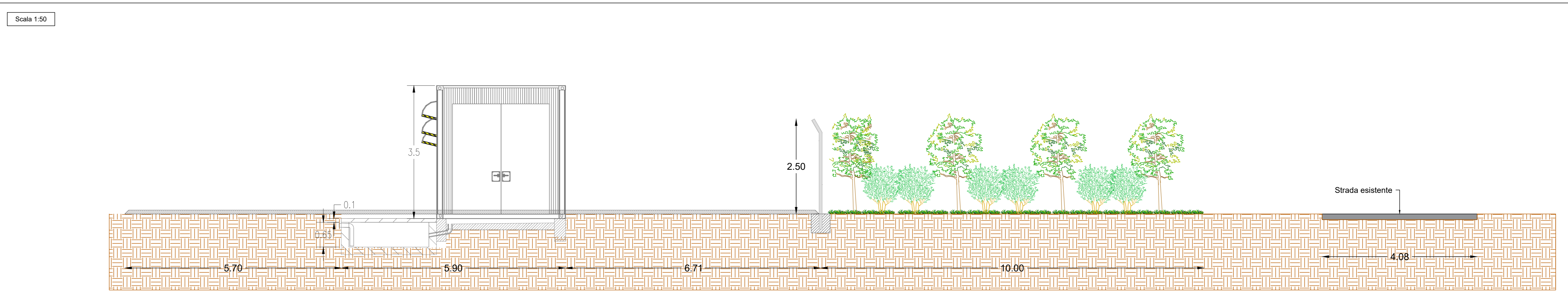


SEZIONI DELL'IMPIANTO

DETTAGLIO 1



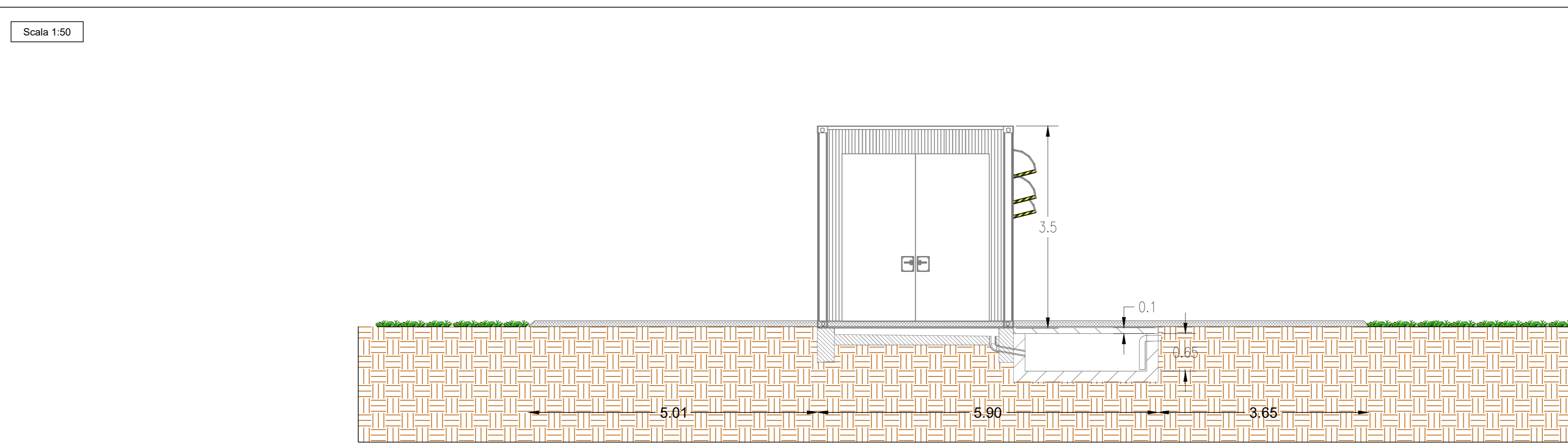
SEZIONE 1 - 1



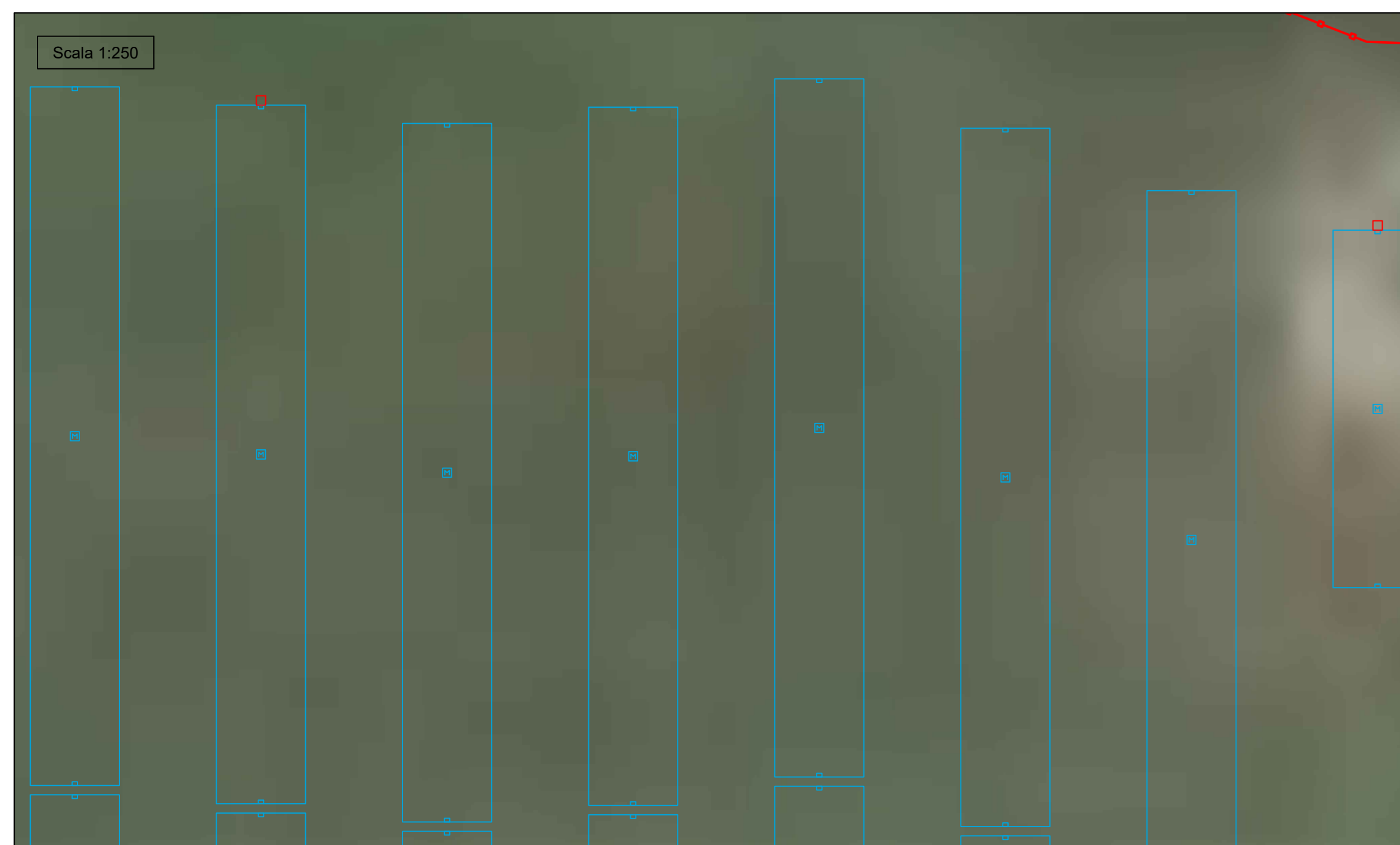
DETTAGLIO 2



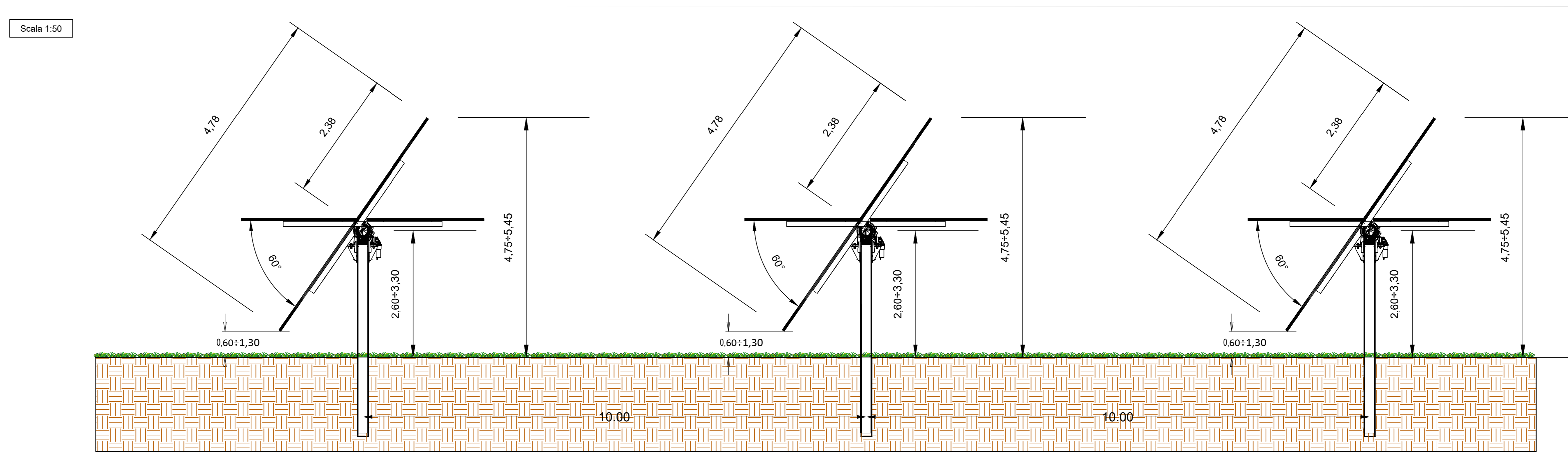
SEZIONE 2 - 2



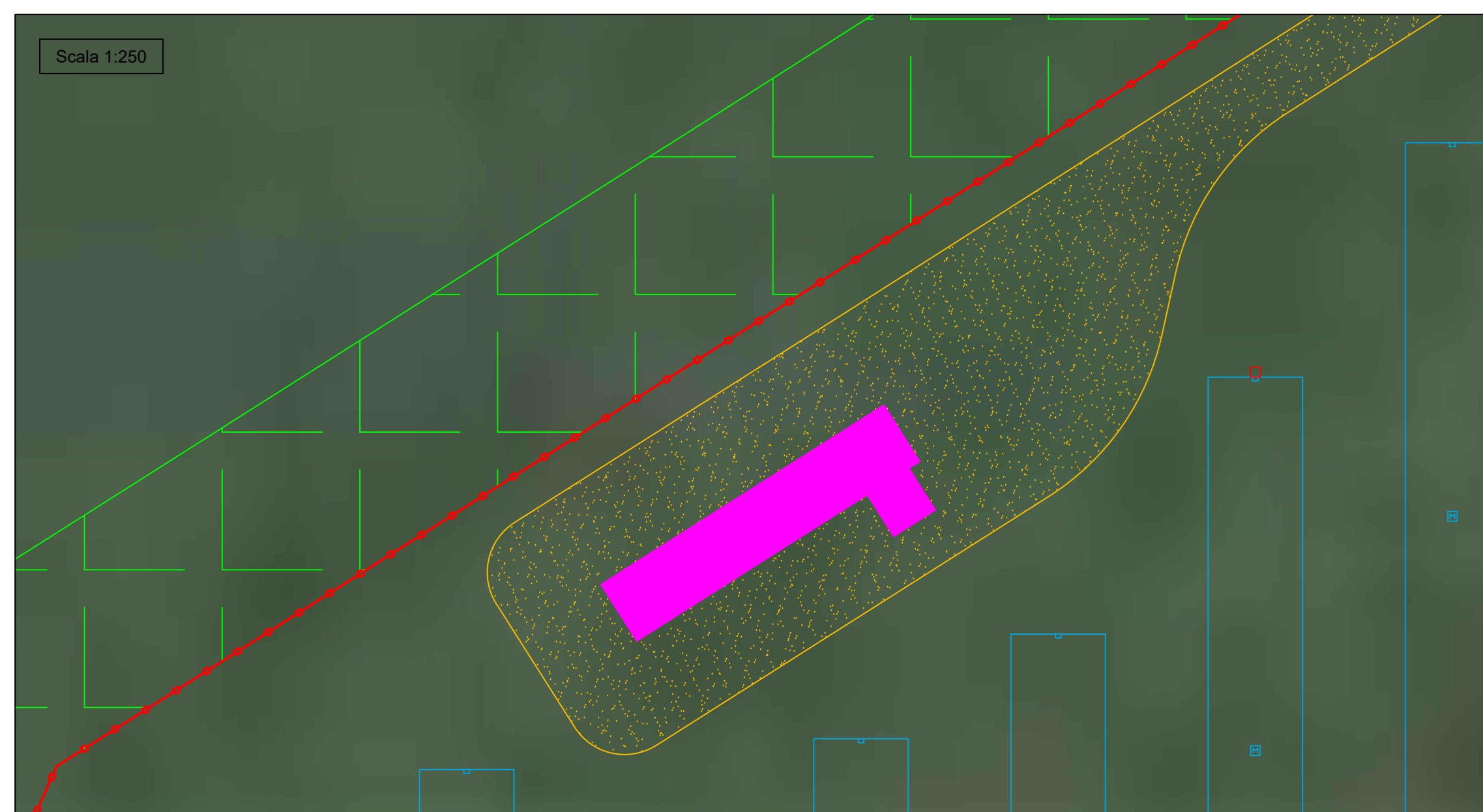
DETTAGLIO 3



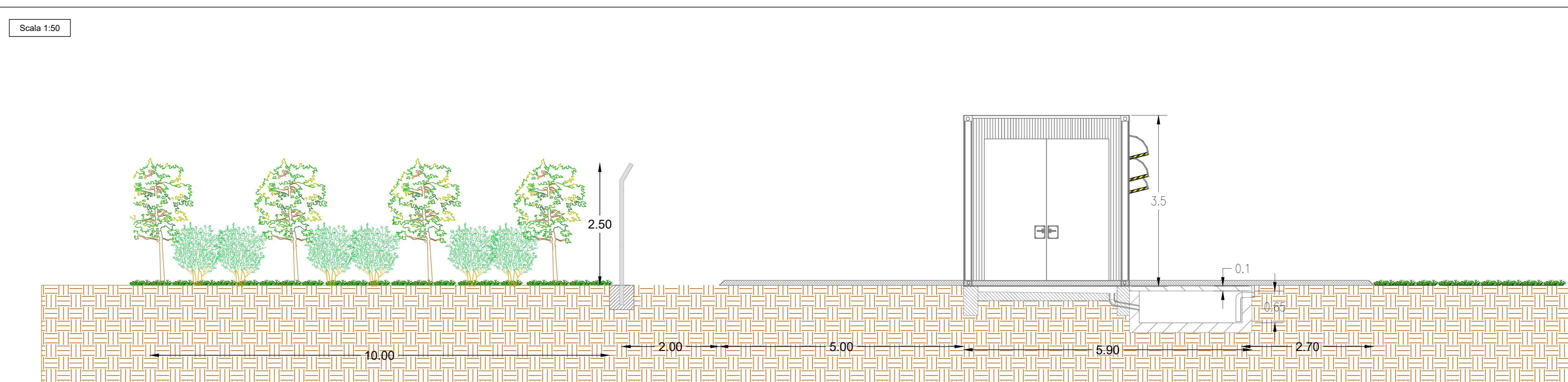
SEZIONE 3 - 3



DETTAGLIO 4



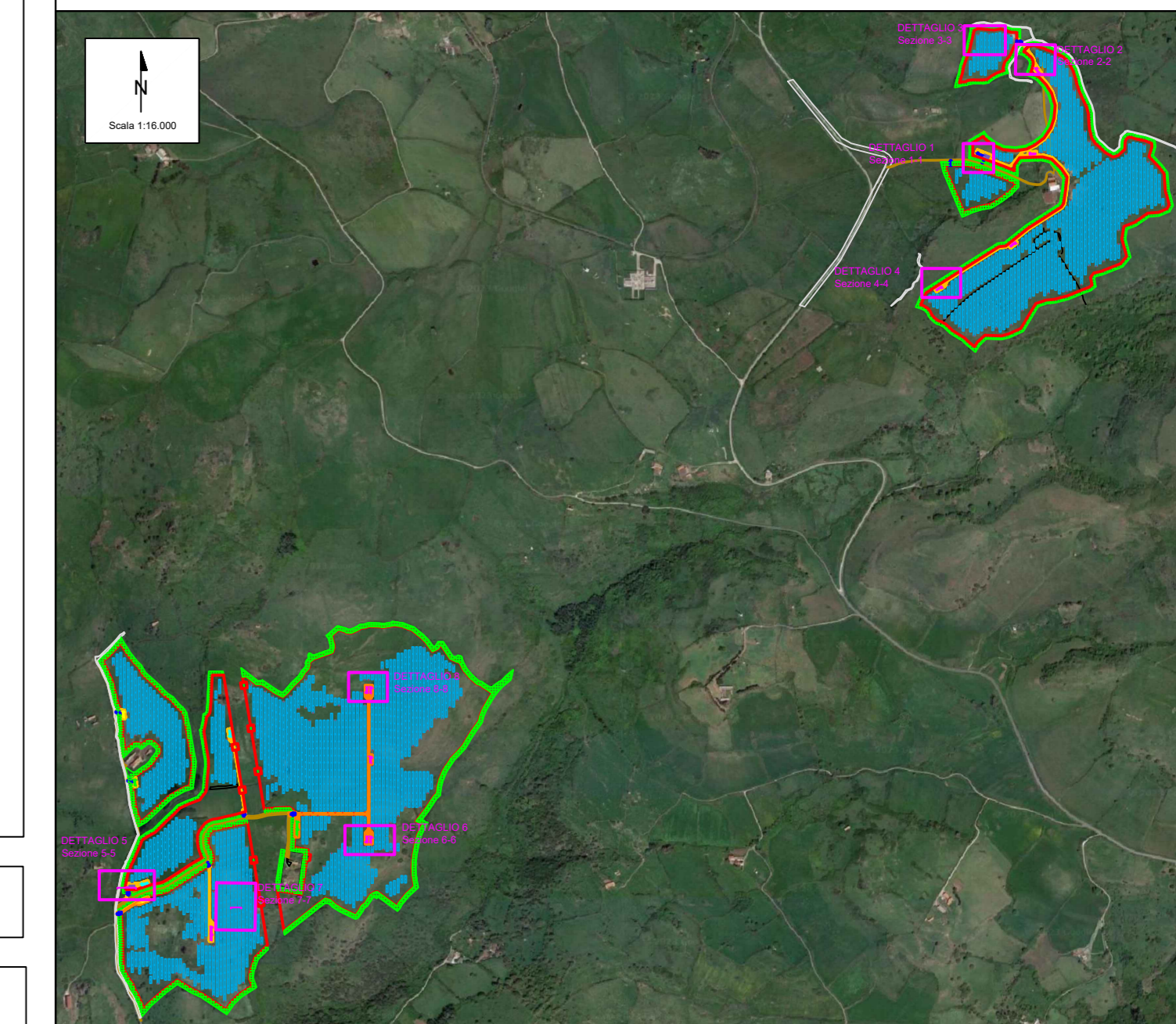
SEZIONE 4 - 4



LEGGENDA

- RECINZIONE
- CANCELLO DI INGRESSO
- FASCIA DI MITIGAZIONE PERIMETRALE
- TRACKER 2x28
- TRACKER 2x14
- TRANSFORMATION UNIT - 3200 kVA
- TRANSFORMATION UNIT - 2880 kVA
- TRANSFORMATION UNIT - 2560 kVA
- TRANSFORMATION UNIT - 1920 kVA
- TRANSFORMATION UNIT - 1600 kVA
- TRANSFORMATION UNIT - 1280 kVA
- CABINA SCADA
- CABINA DI RACCOLTA
- VIABILITA' DI IMPIANTO

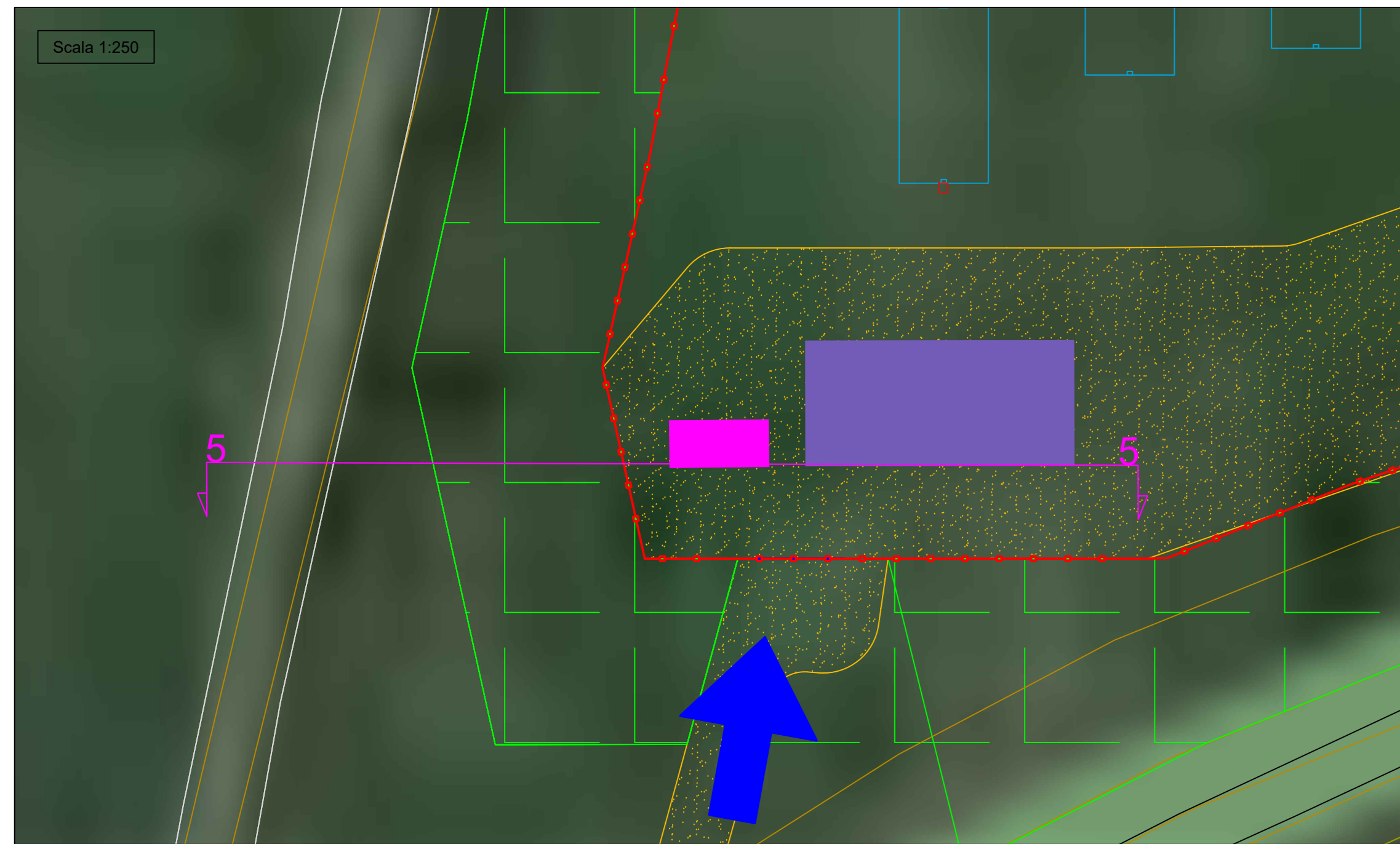
KEY PLAN



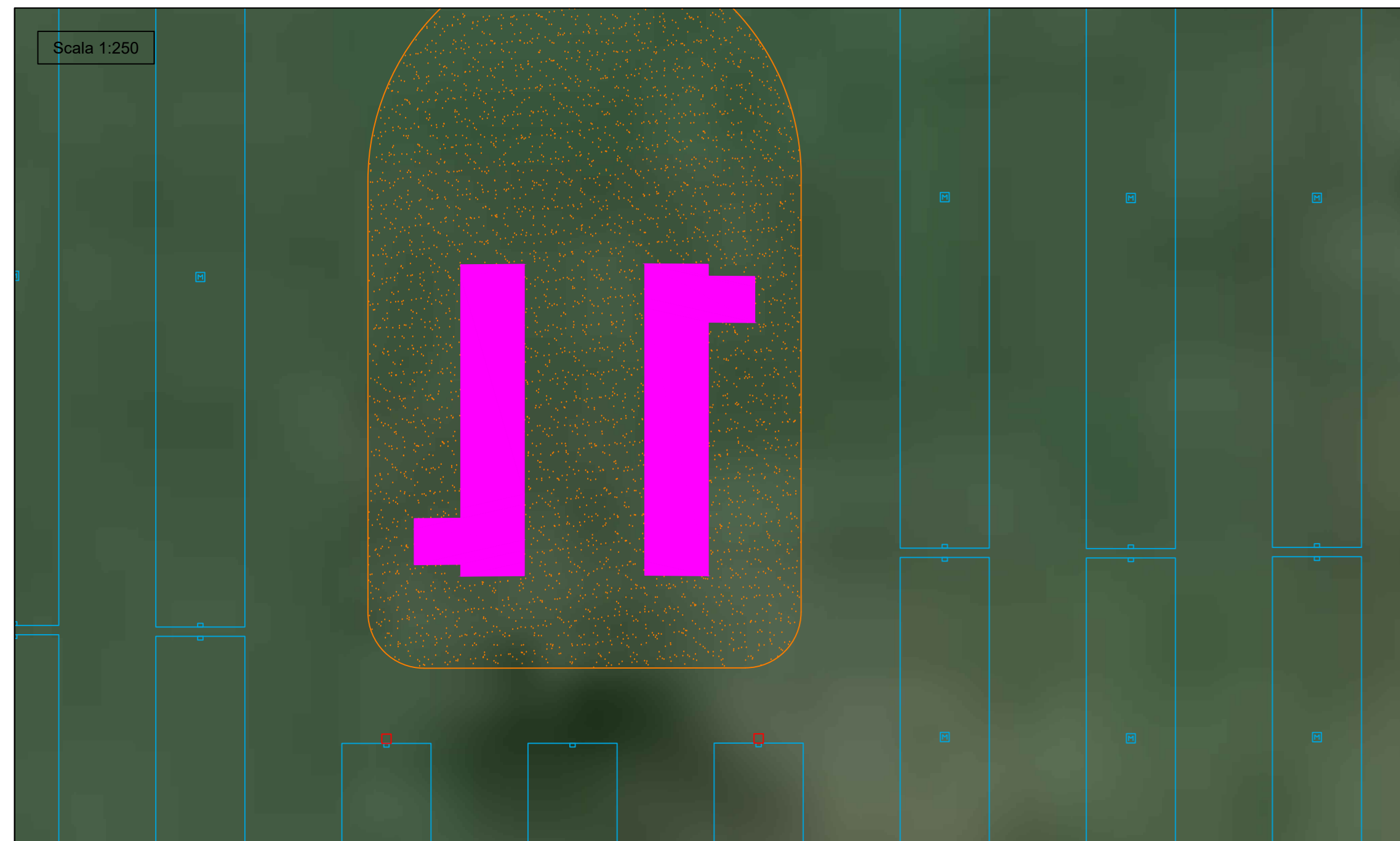
REV.	DATE	DESCRIPTION	Y. NORDI	PREPARED	CHIEVED	APPROVED				
00	15/12/2023	EMMISSIONE								
PROJECT:		Progetto di un impianto agrivoltico denominato "Masala", di potenza pari a 48,76 MWp, e delle relative opere di connessione. Da realizzarsi nei comuni di Ploaghe (SS) e Codronghianis (SS).								
FILE NAME:		LS16943 ENG TAV 018 BY SEZIONI DELL'IMPIANTO.DWG								
CLASSIFICATION:		Company	FORMAT:	A0	VARIE	SCALE:	PILOT SCALE:	1:1	SHEET:	1 di 2
CLIENT VALIDATION		Sezioni dell'impianto								
UTILIZATION SCOPE:		Basic Design								
CLIENT CODE:		PLANT	GROUP	SOC.	PROGRESSIVE	REVISION				
		LS16943 ENG TAV 018 00								

SEZIONI DELL'IMPIANTO

DETTAGLIO 5



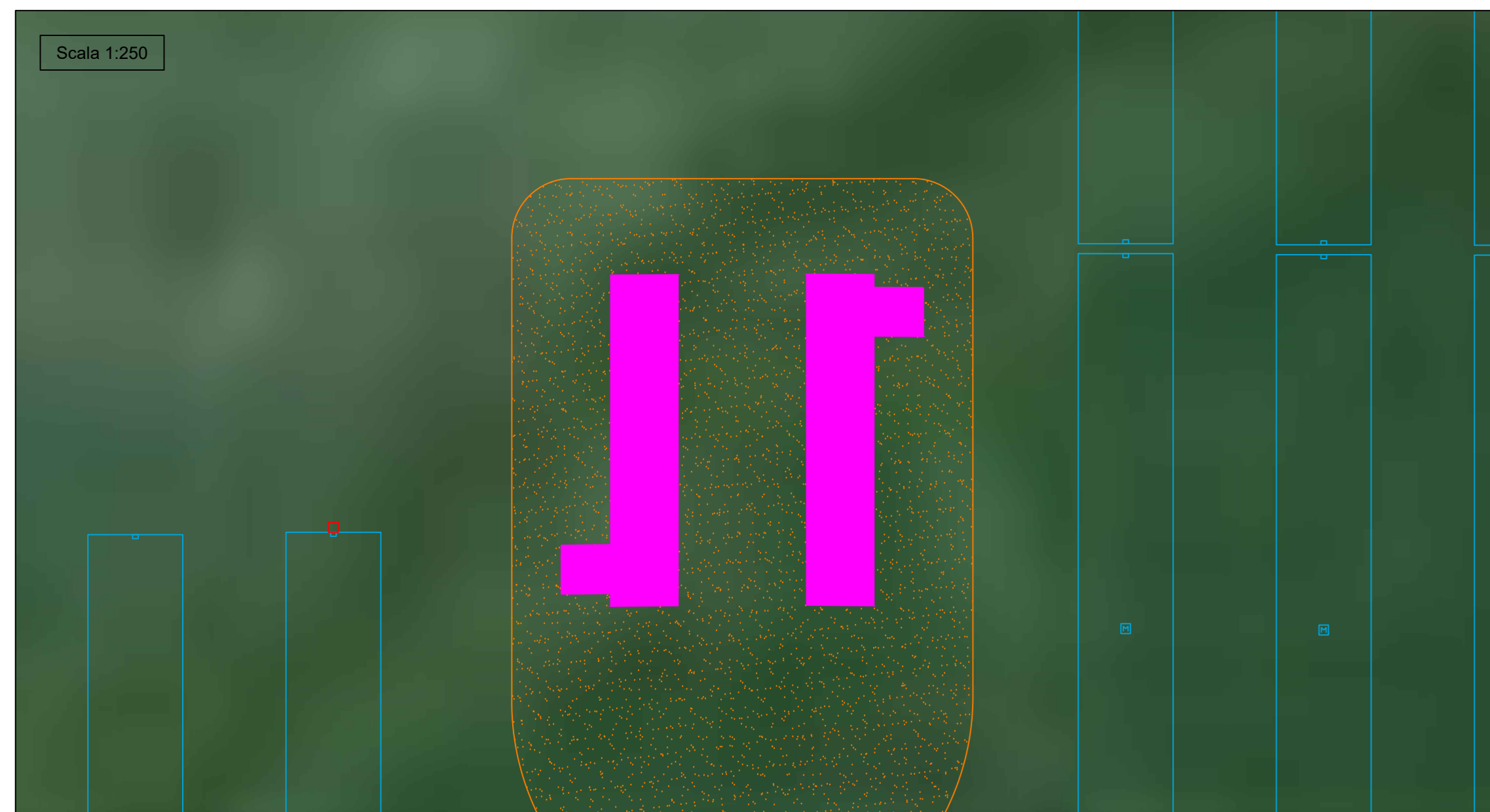
DETTAGLIO 6



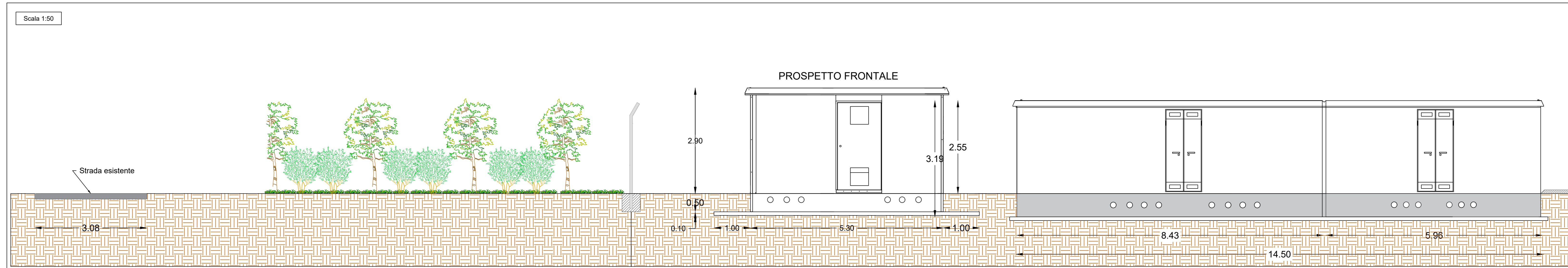
DETTAGLIO 7



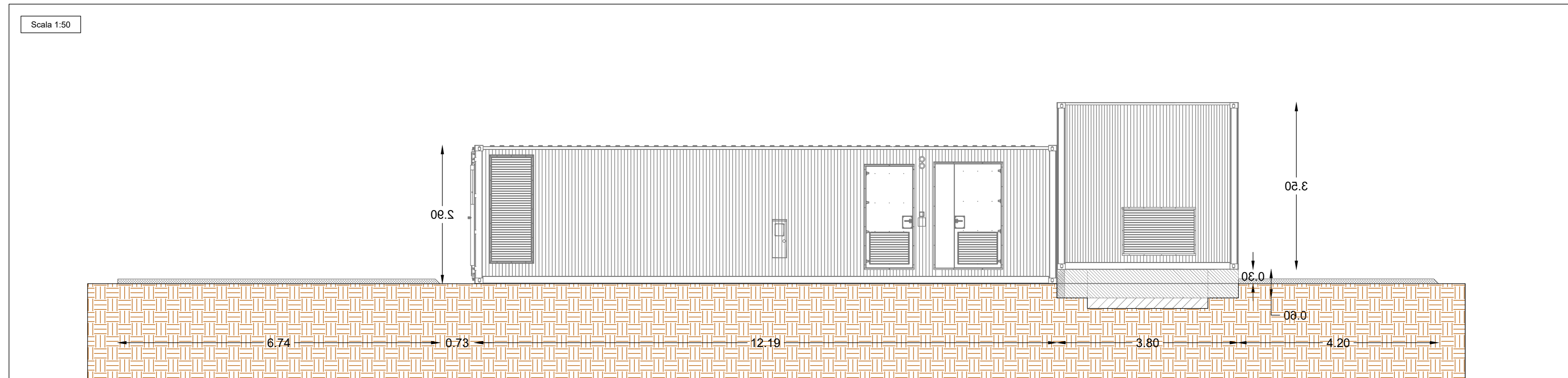
DETTAGLIO 8



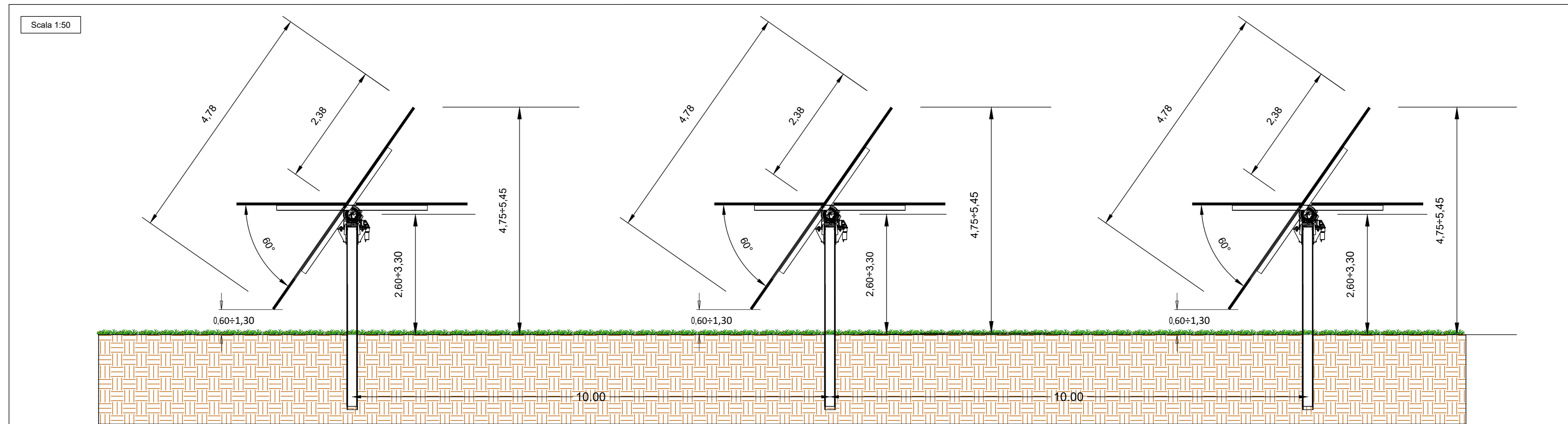
SEZIONE 5 - 5



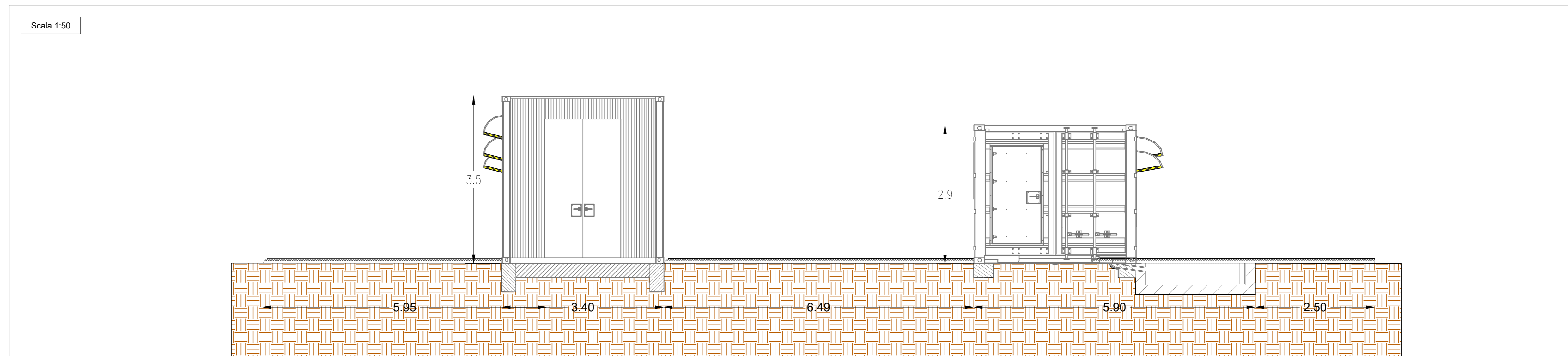
SEZIONE 6 - 6



SEZIONE 7 - 7



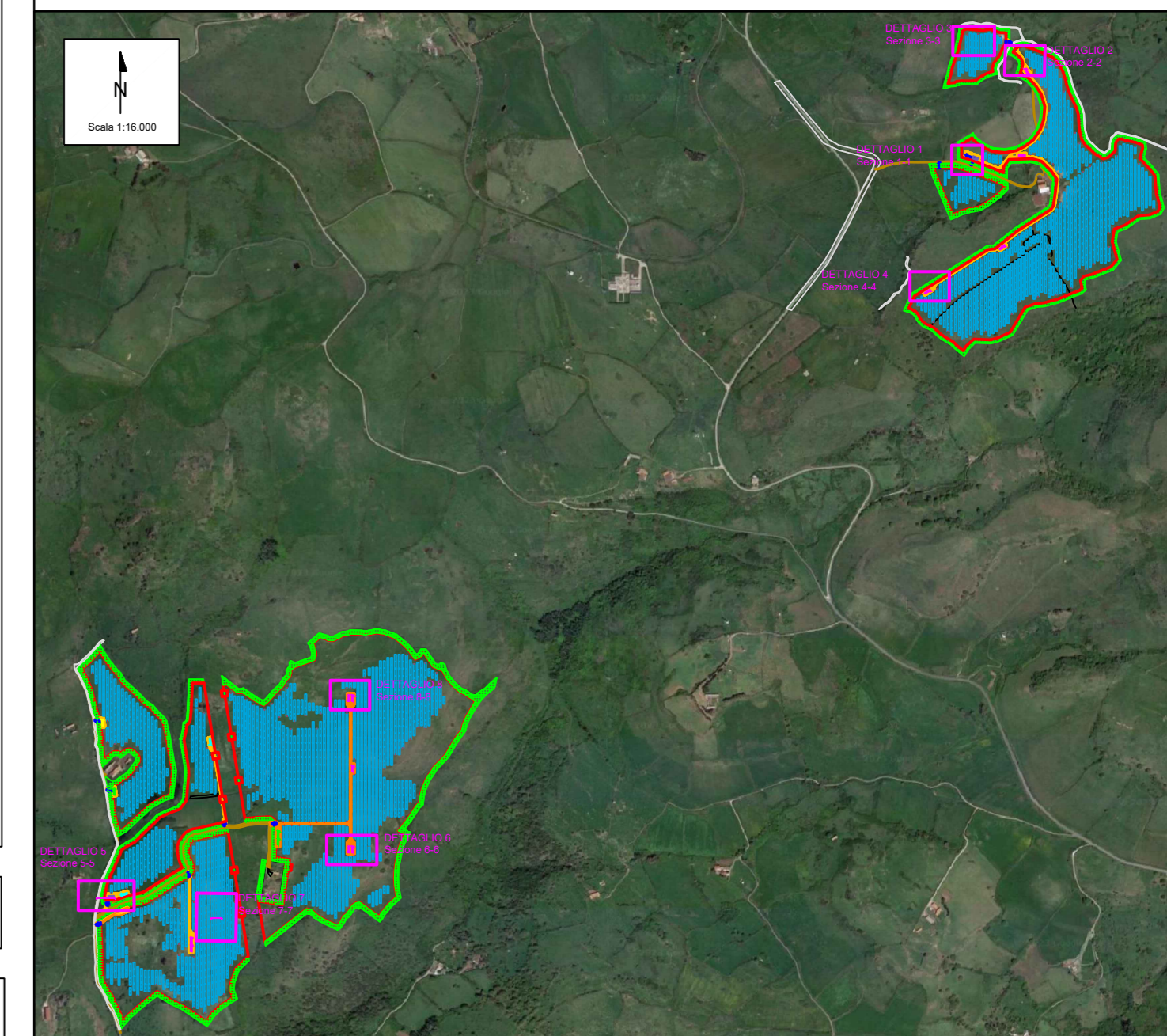
SEZIONE 8 - 8



LEGGENDA

- AREA DI IMPIANTO
- RECINZIONE
- ↘ CANCELLO DI INGRESSO
- FASCIA DI MITIGAZIONE PERIMETRALE
- TRACKER 2x28
- TRACKER 2x14
- TRANSFORMATION UNIT - 3200 KVA
- TRANSFORMATION UNIT - 2880 KVA
- TRANSFORMATION UNIT - 2560 KVA
- TRANSFORMATION UNIT - 1920 KVA
- TRANSFORMATION UNIT - 1600 KVA
- TRANSFORMATION UNIT - 1280 KVA
- CABINA SCADA
- CABINA DI RACCOLTA
- VIABILITA' DI IMPIANTO

KEY PLAN



REV.	DATE	DESCRIPTION	Y. Neri	A. Fava	L. Spicciari
PREPARED	CHECKED	APPROVED			
00	15/12/2023	EMMISSIONE			
PROJECT: Progetto di un impianto agrivoltico denominato "Masala", di potenza pari a 48,76 MWp, e delle relative opere di connessione. Da realizzarsi nei comuni di Ploaghe (SS) e Codronghianis (SS).					
FILE NAME: LS16943 ENG TAV 018 BY SEZIONI DELL'IMPIANTO.DWG		CLASSIFICATION: Company	FORMAT: A0	SCALE: VARIE	PILOT SCALE: 1:1
TITLE: Sezioni dell'impianto					
CLIENT VALIDATION					
APPROVED BY:		UTILIZATION SCOPE: Basic Design	CLIENT CODE:		
		PLAN	GROUP	SOC.	PROJECTIVE
		LS16943 ENG TAV		018 00	