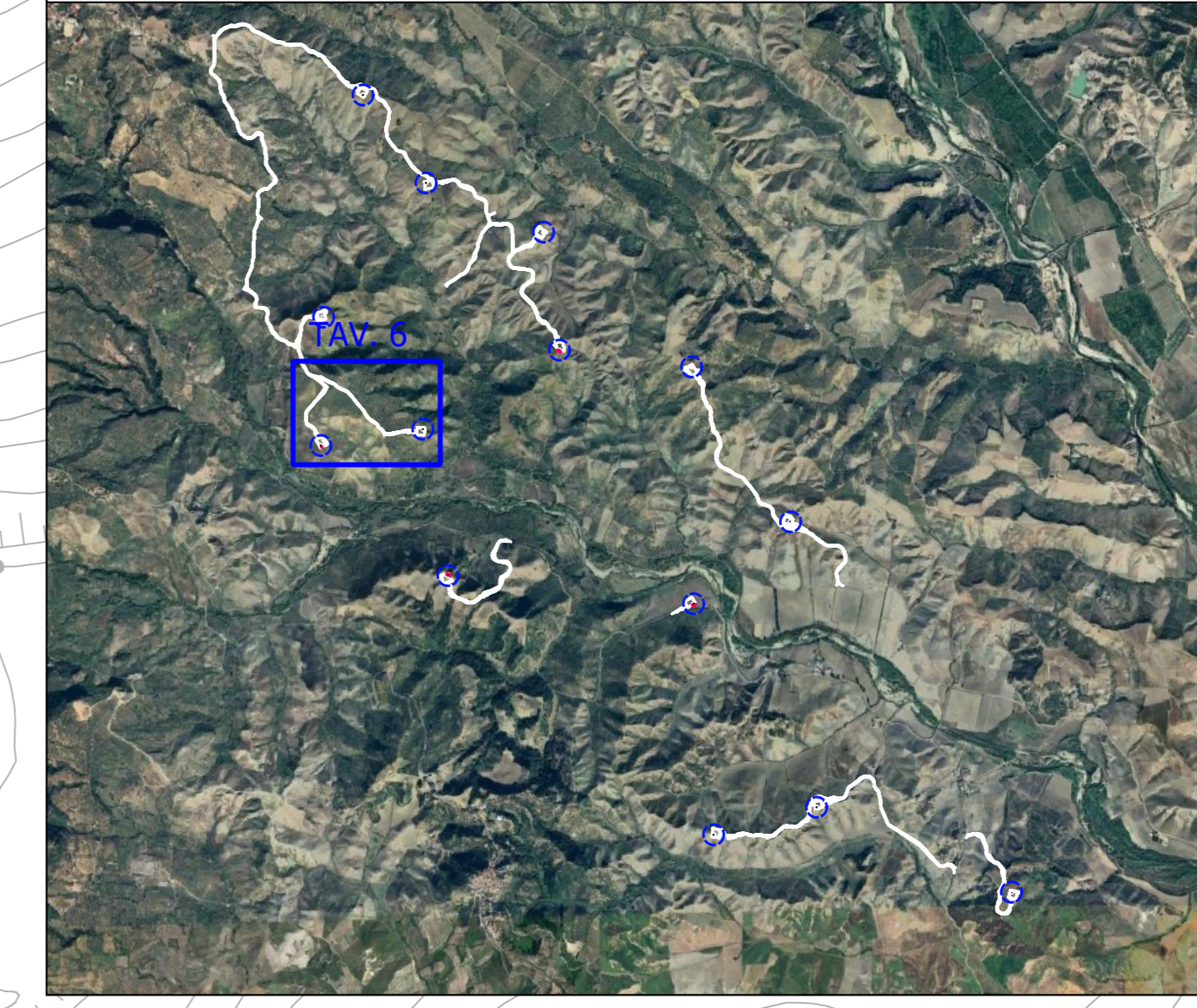


KEYMAP - Scala 1:50.000



Comittente: ESC WIND S.R.L.
Piazza Europa, 14
87100 Cosenza - Italy
P.IVA: 03884510787

Documento: **PROGETTO DEFINITIVO**
Titolo del Progetto: **PARCO EOLICO "MESORACA"**

Elaborato: **Planimetria Idraulica Tav.06**

PROGETTO	DISCIPLINA	AMBITO	TIPO ELABORATO	PROGRESSIVO	SCALA
E-MES	P	ID	PP	06	1:1000
NOME FILE: E-MES-P-ID-PP-06_Planimetria Idraulica Tav.06					

Progettazione:

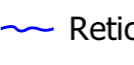

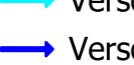

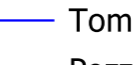


 **Ing. Saverio Pagliuso**

Ing. Mario Francesco Perri

Ing. Giorgio Salatino

Rev.	Prima Emissione	Descrizione Revisione	Redatto	Controllato	Approvato
00	FEBBRAIO 2024	PRIMA EMISSIONE	GEMSA PRO	GEMSA PRO	ESC WIND S.R.L.

Legenda

-  Reticolo idrografico
-  Verso di scorrimento tubazione interrata
-  Verso di scorrimento tombini
-  Verso di scorrimento fossi
-  Tubazione interrata
-  Pozzini
-  Fossi di guardia

