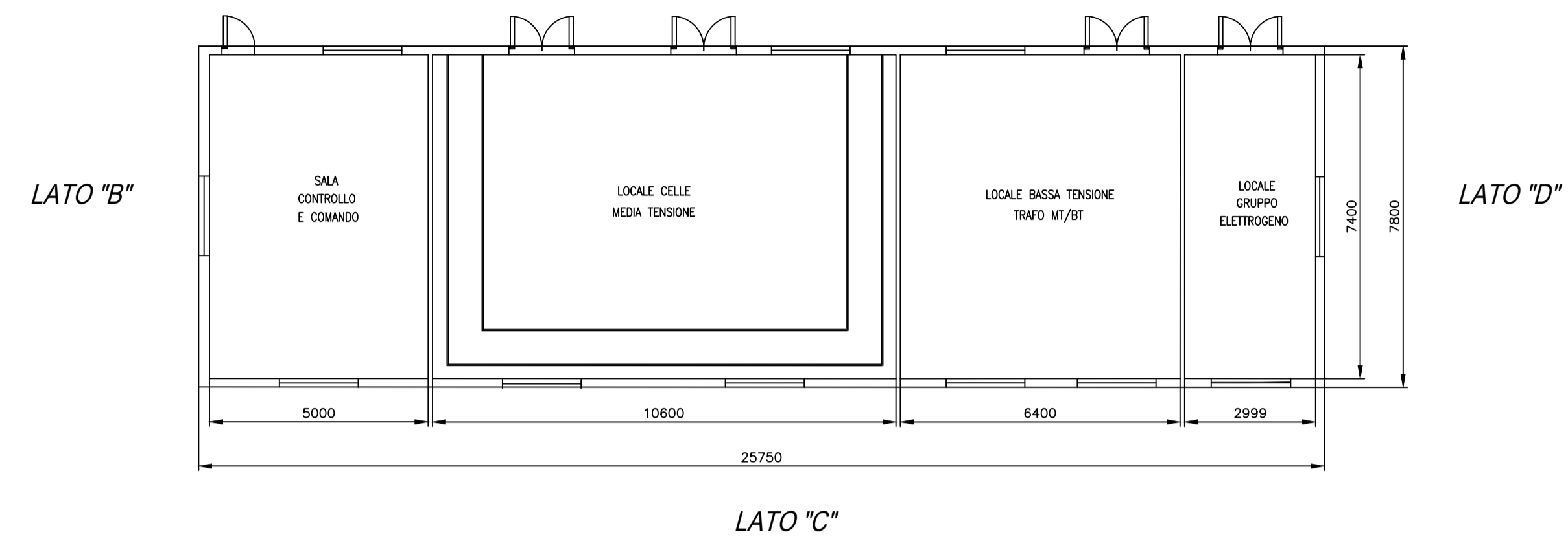
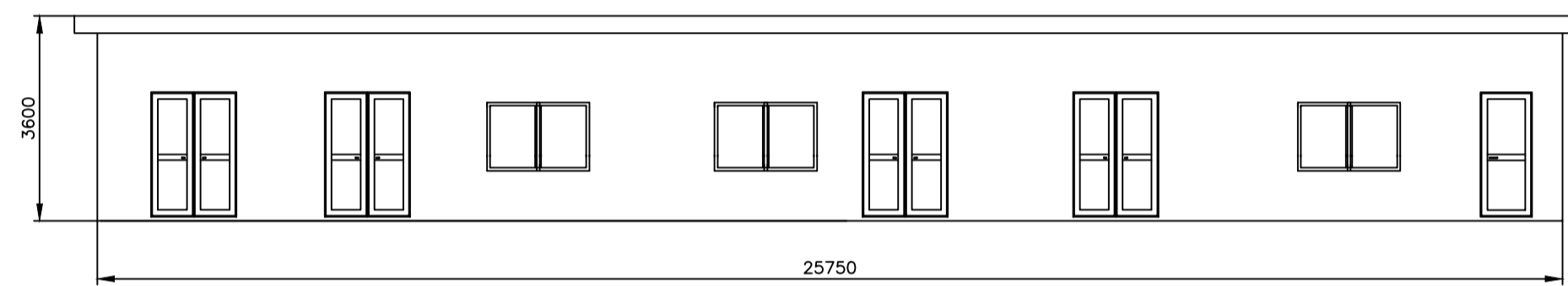


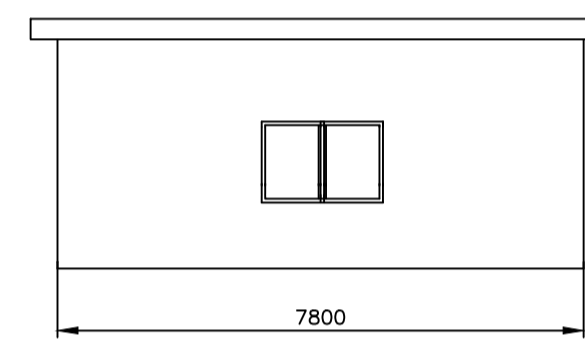
EDIFICIO DI CONTROLLO SET



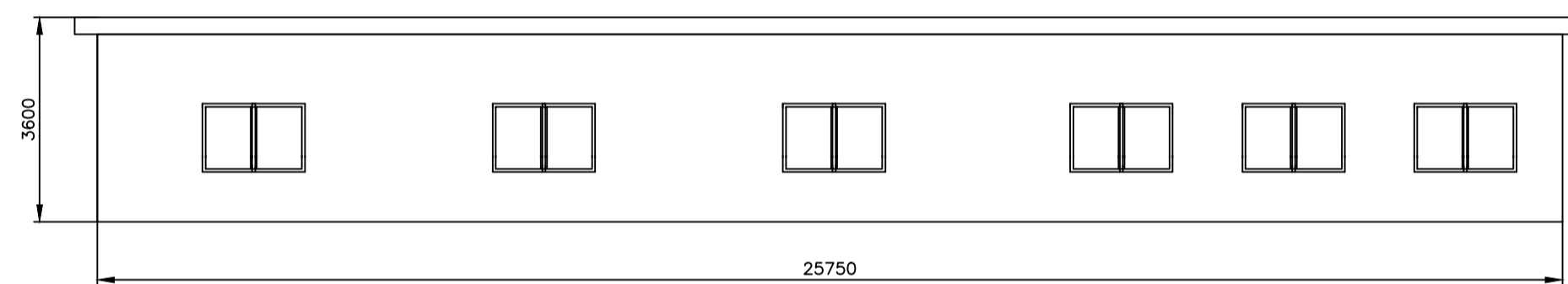
VISTA "LATO A"



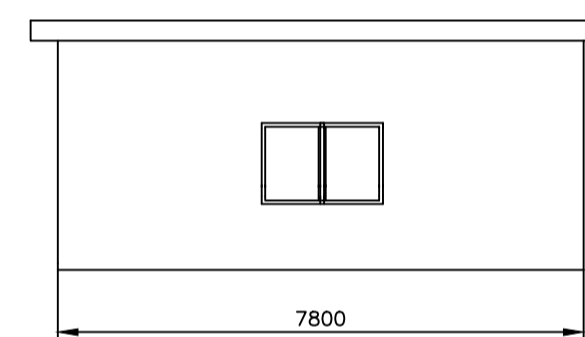
VISTA "LATO B"



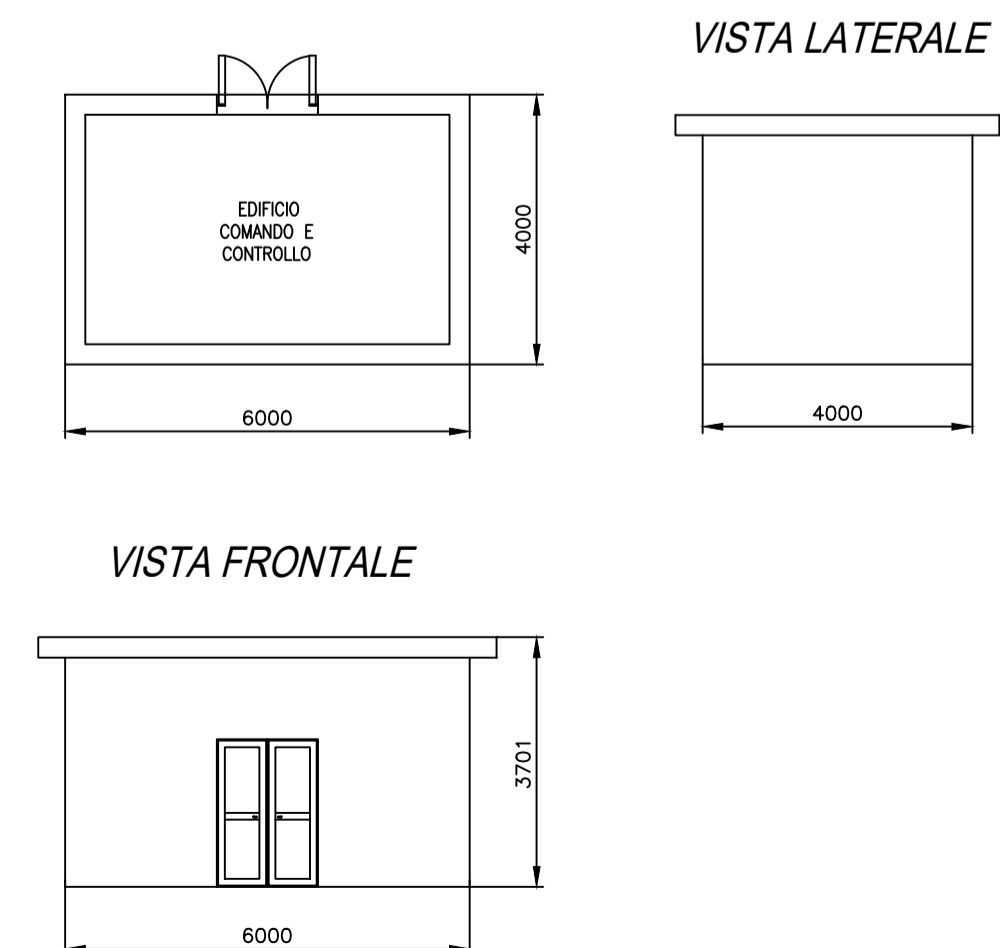
VISTA "LATO C"



VISTA "LATO D"



EDIFICIO STAZIONE DI CONDIVISIONE



Committente:



Eni Plenitude Technical Services S.r.l.  
Via Dismano, 1280  
47522 Cesena (FC) - Italy  
Tel. centralino +39 0547 317199  
eniplenitude.com

Documento:

PROGETTO DEFINITIVO

Titolo del Progetto:

PARCO EOLICO "SAMBUCA"

Elaborato:

Edificio SET

PROGETTO	DISCIPLINA	AMBITO	TIPO ELABORATO	PROGRESSIVO	SCALA
W-SAM	E	SE	DT	06	-

NOME FILE: W-SAM-E-SE-DT-06\_Edificio SET

Progettazione:

Ing. Raffaele Ciotola



Rev.	Data Revisione	Descrizione Revisione	Redatto	Controllato	Approvato
00	SETTEMBRE 2023	PRIMA EMISSIONE	CIOTOLA	GEMSA	ENI PLENITUDE