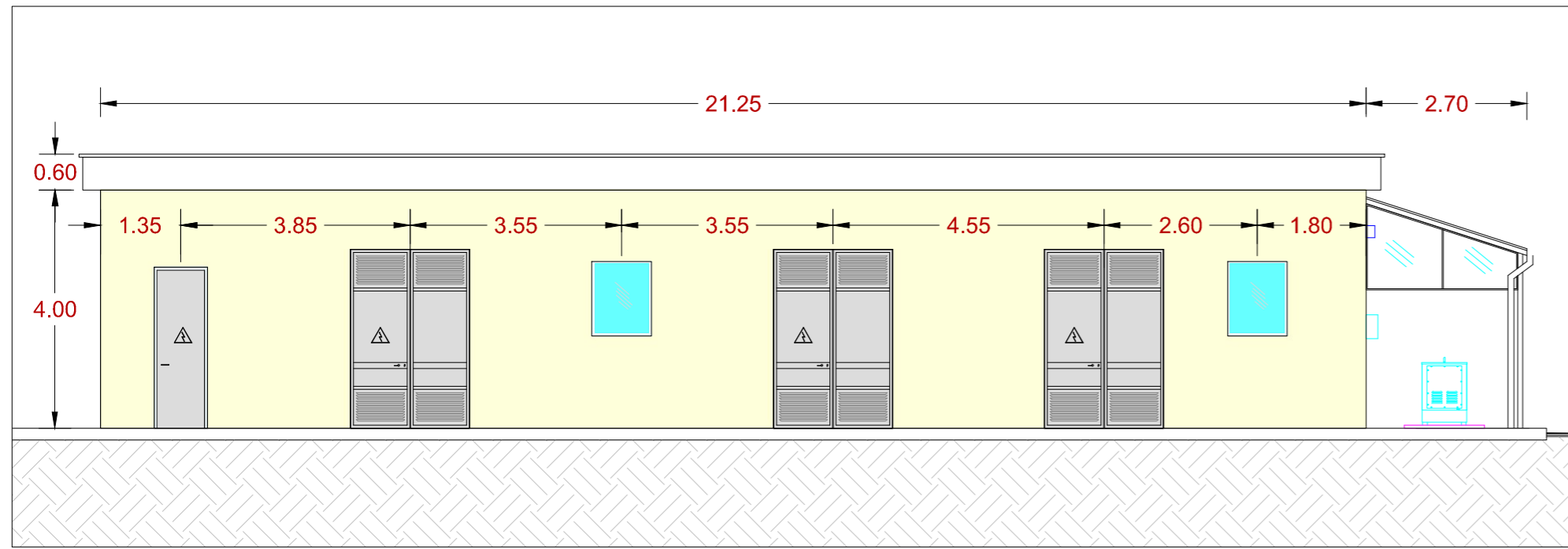
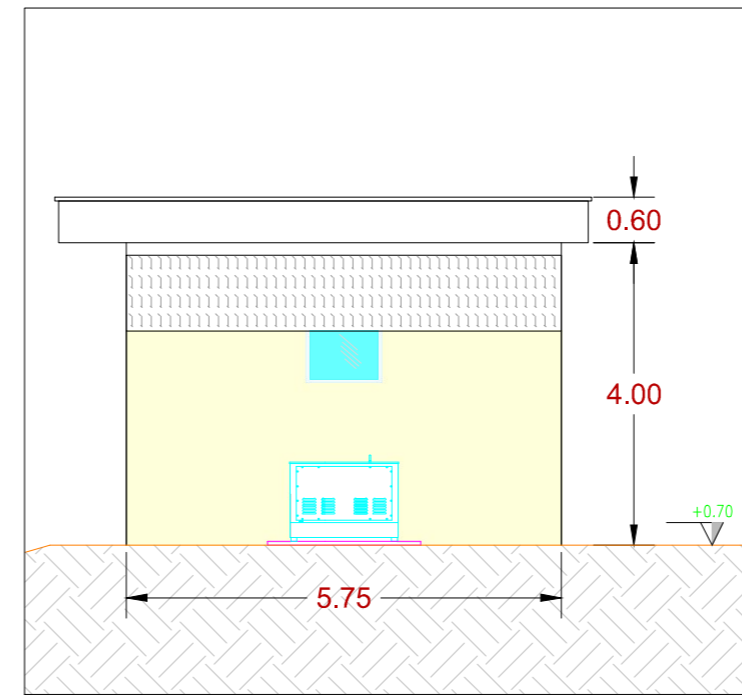


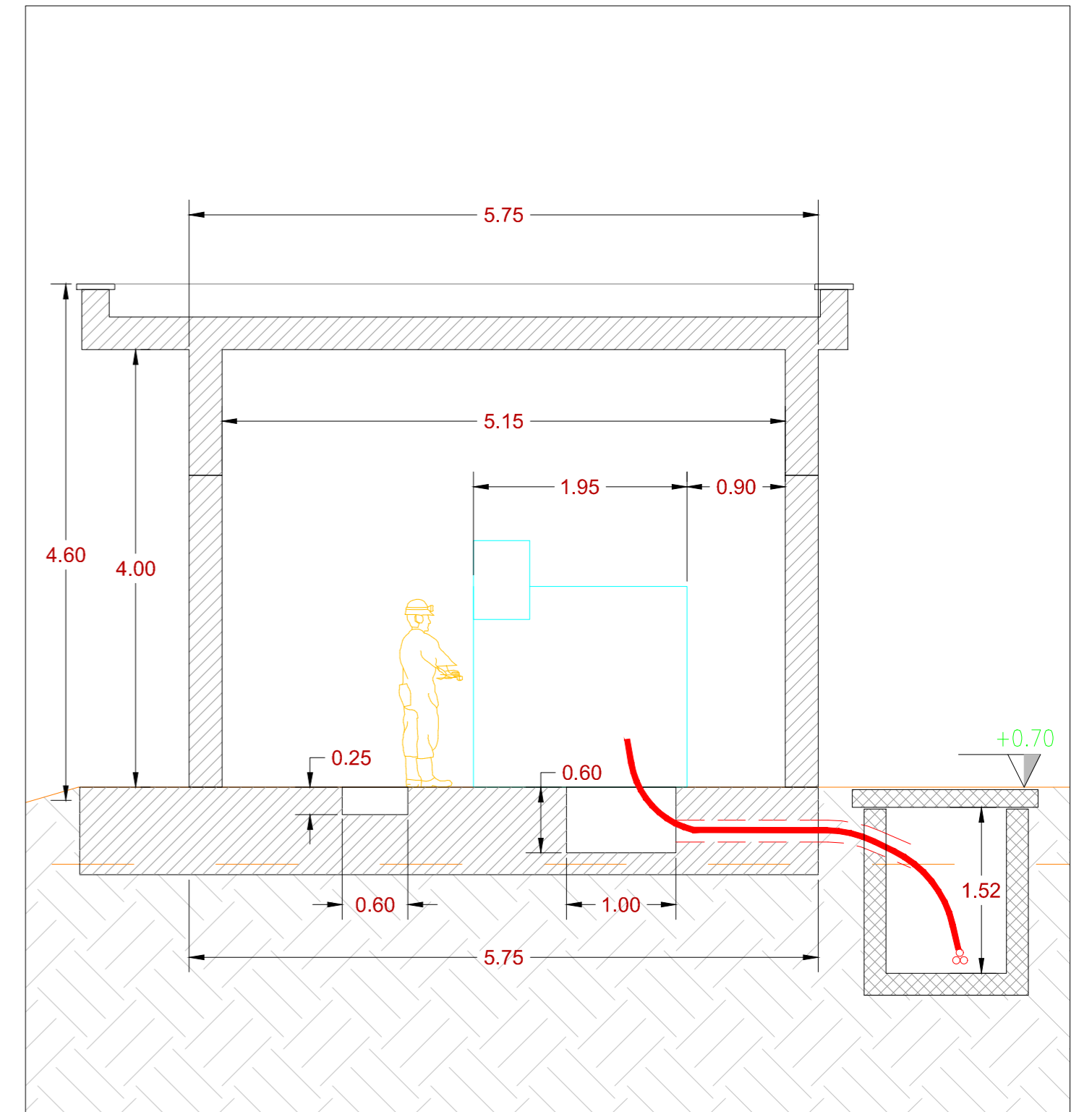
Vista A - Scala 1:100



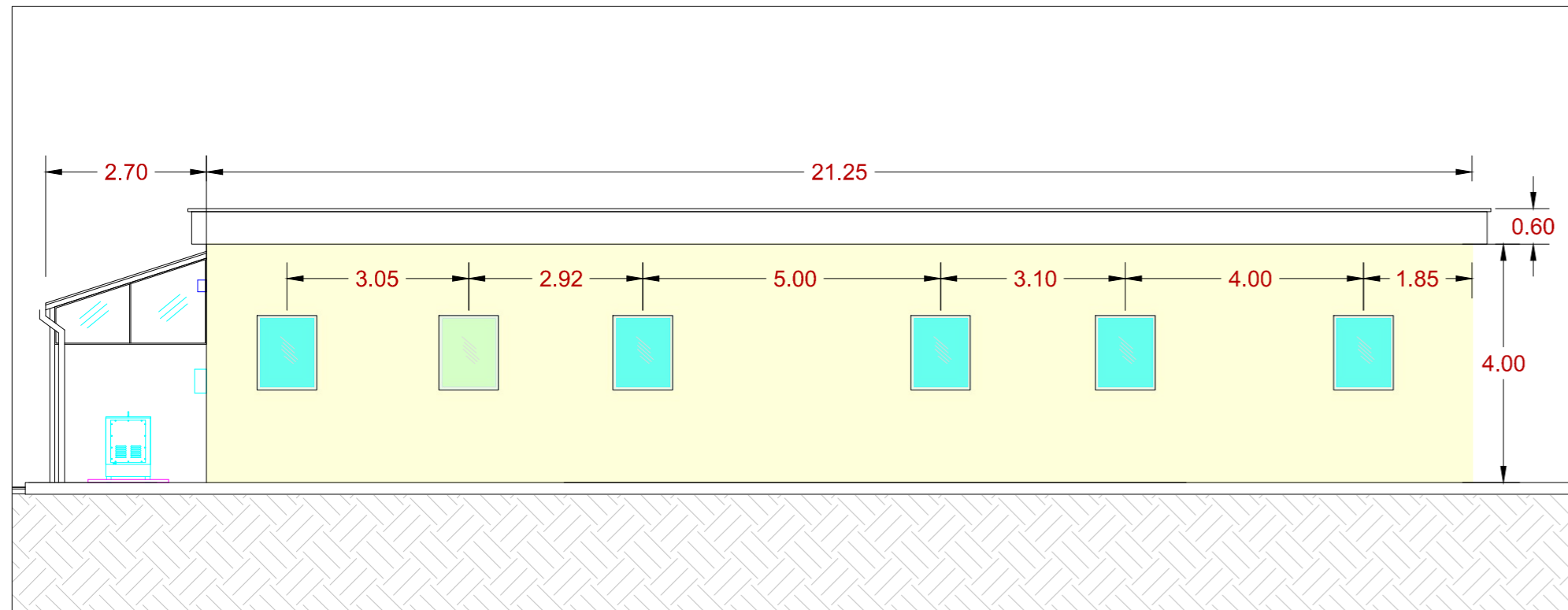
Vista C - Scala 1:100



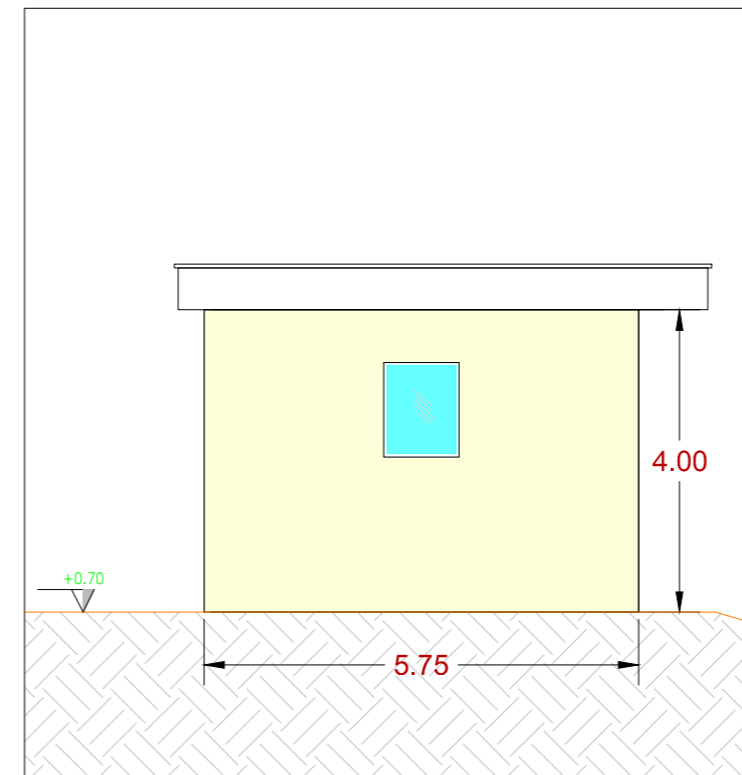
Sezione 1-1 - Scala 1:50



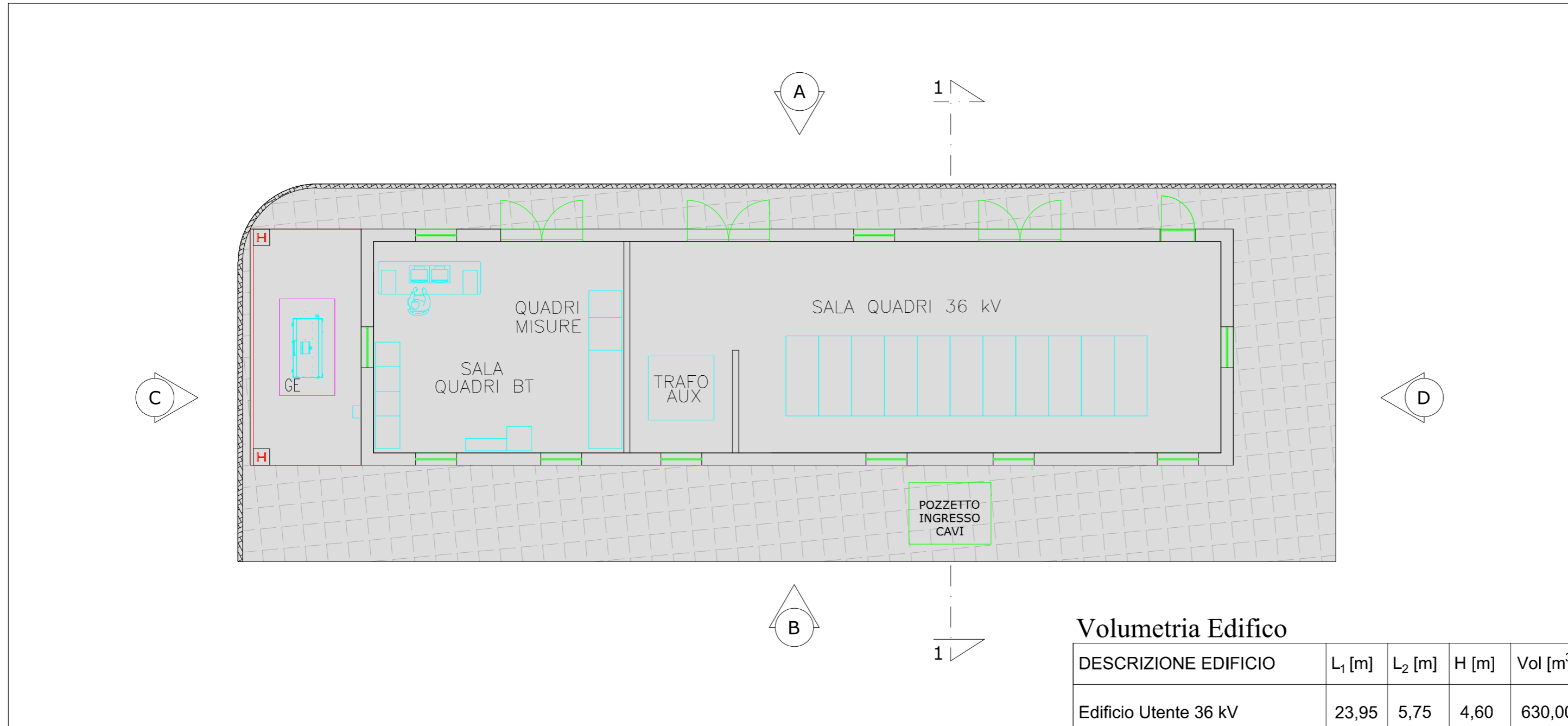
Vista B - Scala 1:100



Vista D - Scala 1:100





Planimetria interna - Edificio Utente - Scala 1:100



Volumetria Edificio

DESCRIZIONE EDIFICIO	L ₁ [m]	L ₂ [m]	H [m]	Vol [m ³]
Edificio Utente 36 kV	23,95	5,75	4,60	630,00

COMMITTENTE ENGIE DELIA SRL		STUDIO DI PROGETTAZIONE Ing Daniele Cavallo Via C. del Croix, 55 - 72022 - Latiano (BR)					
							
0	Gen-24	EMESSO PER ITER AUTORIZZATIVO			RC	DC	PL
REV.	DATE	DESCRIPTION			BY	CHD	APP.
REVISIONS							
Impianto Agrivoltaico integrato innovativo denominato "DELIA" avente potenza d'impianto di 50,561 MW e relative opere connesse Comuni Marsala (TP) e Trapani (TP)					APPROVED FOR CONSTRUCTION DWG. REV. DATE SIGNATURE ORDER N°		
PROGETTO DEFINITIVO IMPIANTO AGRIVOLTAICO E OPERE CONNESSE					SUPPLIER CONTRACT N°		
OBJECT: TAV.36 Planimetria, viste e sezioni edificio utente					SUBPROJECT CODE: THIS DWG. SUPERSEDED BY SCALE THIS DWG. SUPERSEDES VARIE		
<small>THIS DRAWING IS THE PROPERTY OF ENGIE DELIA SRL AND IS LENT WITH-OUT CONSIDERATION OTHER THAN THE BORROWER'S AGREEMENT THAT IT SHALL NOT BE REPRODUCED COPIED LENT OR DISPOSED OF DIRECTLY OR INDIRECTLY. NOR USED FOR ANY PURPOSE OTHER THAN THAT FOR WHICH IT IS SPECIFICALLY FURNISHED THE APPARATUS SHOWN IN THE DRAWING IS COVERED BY PATENTS.</small>					FWI DWG N° REV. SHEET OF		
CAD FILE NAME:					A0		