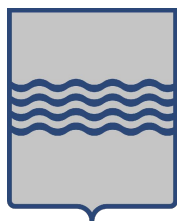


Regione Basilicata



Comune di Rapolla



Comune di Venosa






PROGETTO DEFINITIVO

PROGETTO DEFINITIVO PER LA REALIZZAZIONE DI UN CLUSTER DI N. 2 IMPIANTI AGRIVOLTAICI DENOMINATI "RAPOLLA" E "VENOSA" DELLA POTENZA COMPLESSIVA DI PICCO PARI A 29.353,68 kWp DA REALIZZARSI IN AGRO DI RAPOLLA E VENOSA (PZ) E DELLE RELATIVE OPERE DI CONNESSIONE UBICATE ANCHE NEL COMUNE DI MELFI (PZ)

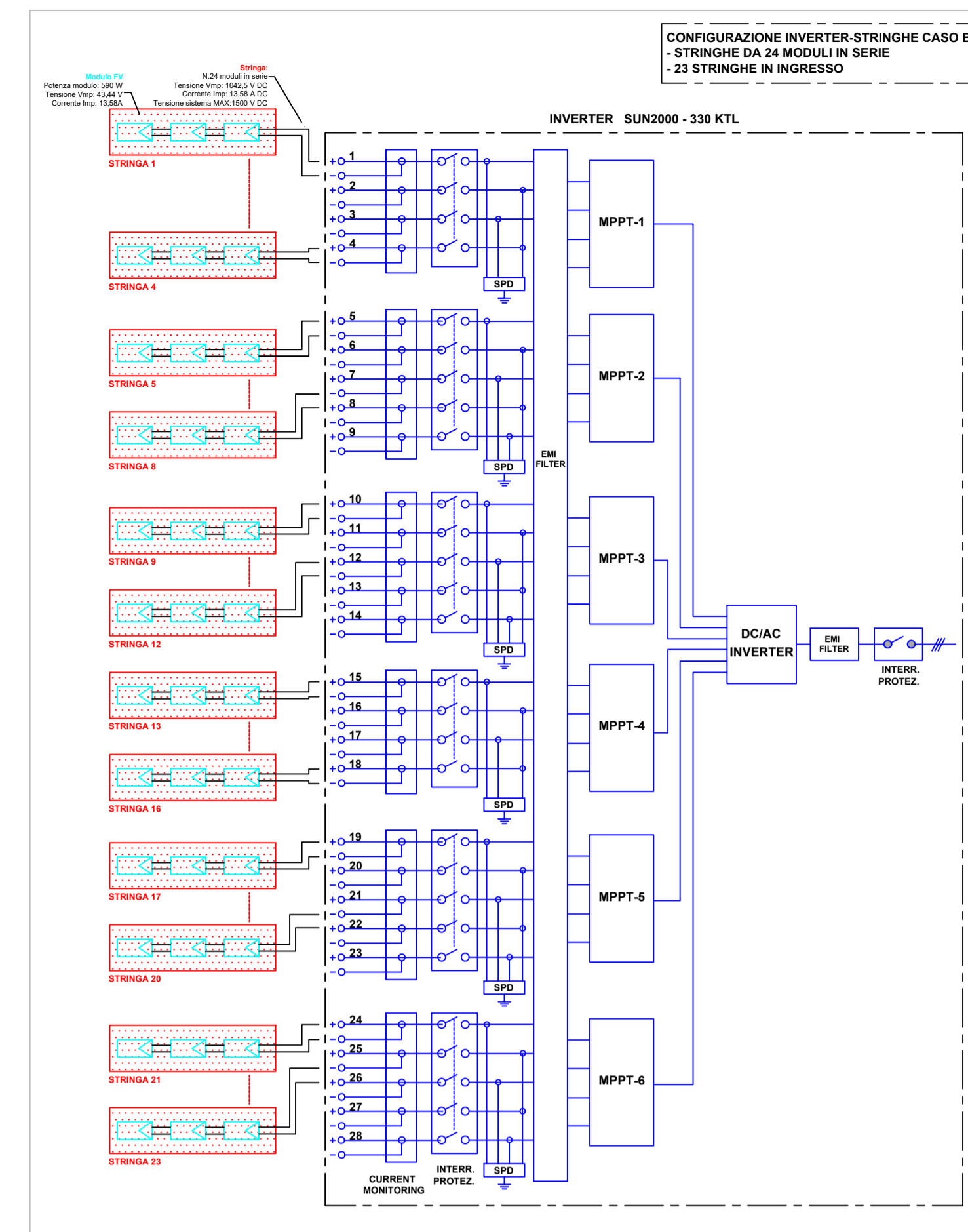
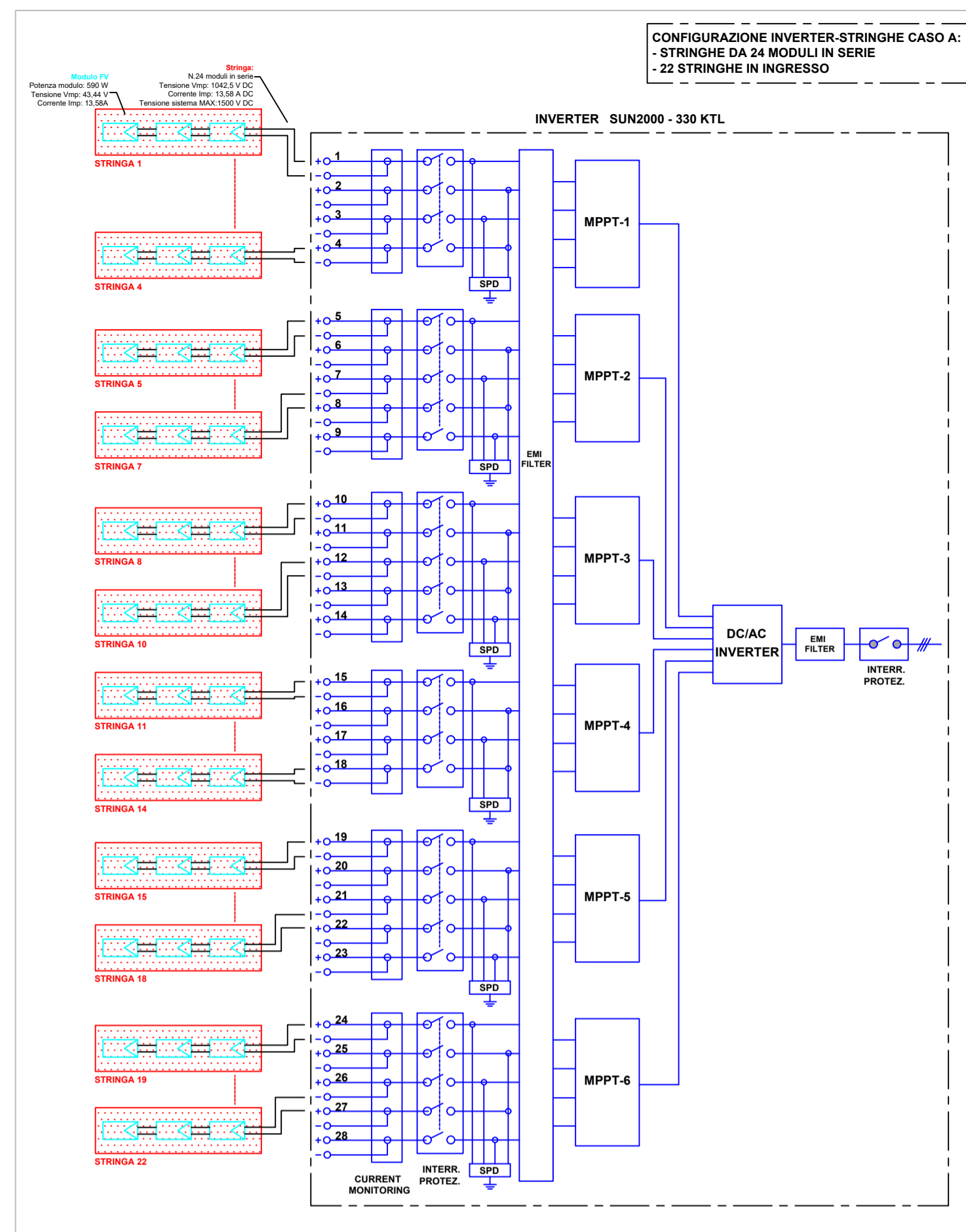
TITOLO

Schemi elettrici unifilari impianto - lato BT Impianto di Venosa

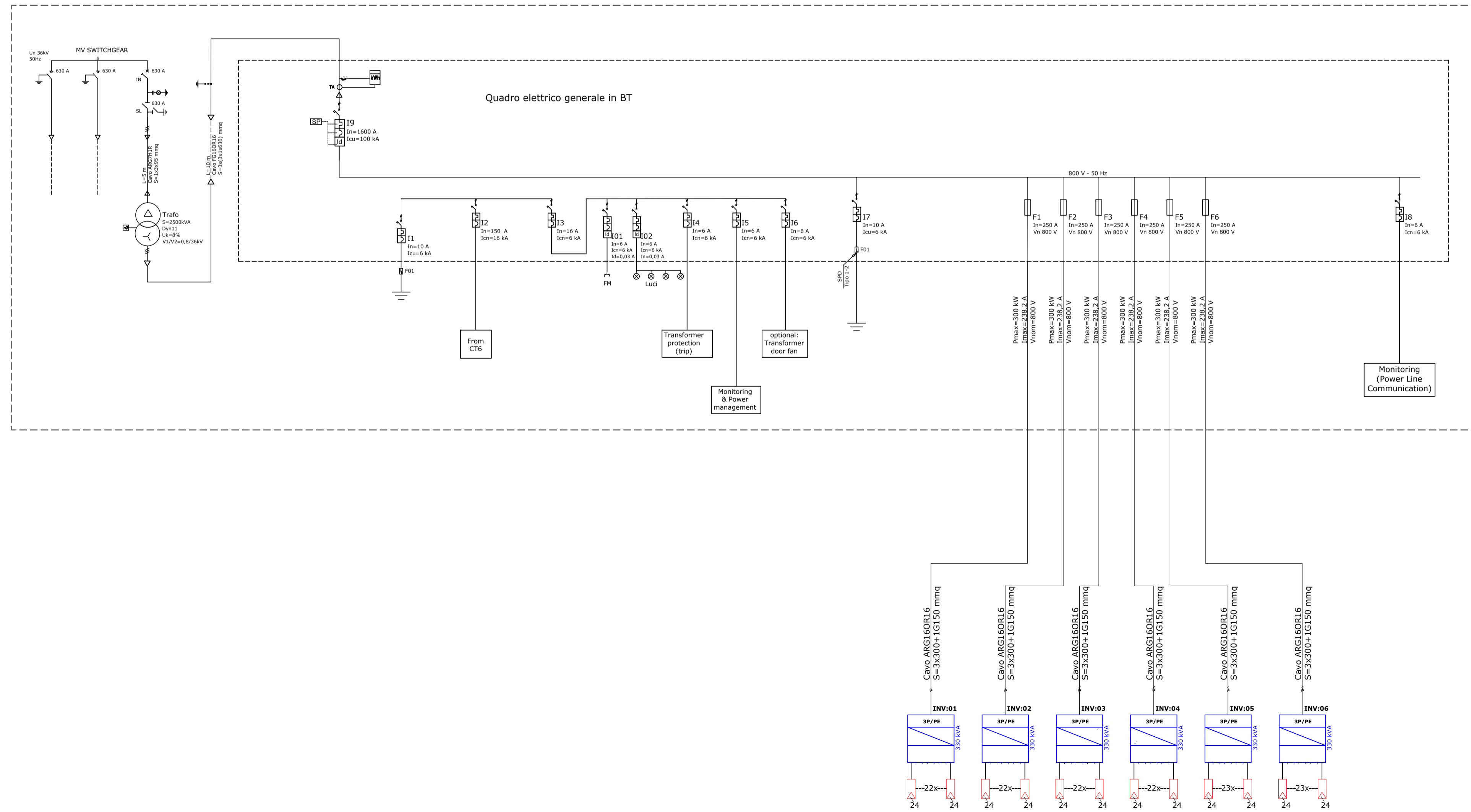
PROGETTAZIONE	CONSULENZA	PROPONENTE
 SR International S.r.l. Via di Monserrato 152 - 00186 Roma Tel. 06 8079555 - Fax 06 80693106 C.F e P.IVA 13457211004  Ing. Andrea Bartolazzi		 ATON 36 S.r.l. Via Ezio Maccani, 54 - 38121 Trento aton36.srl@pec.it C.F e P.IVA 02729140224

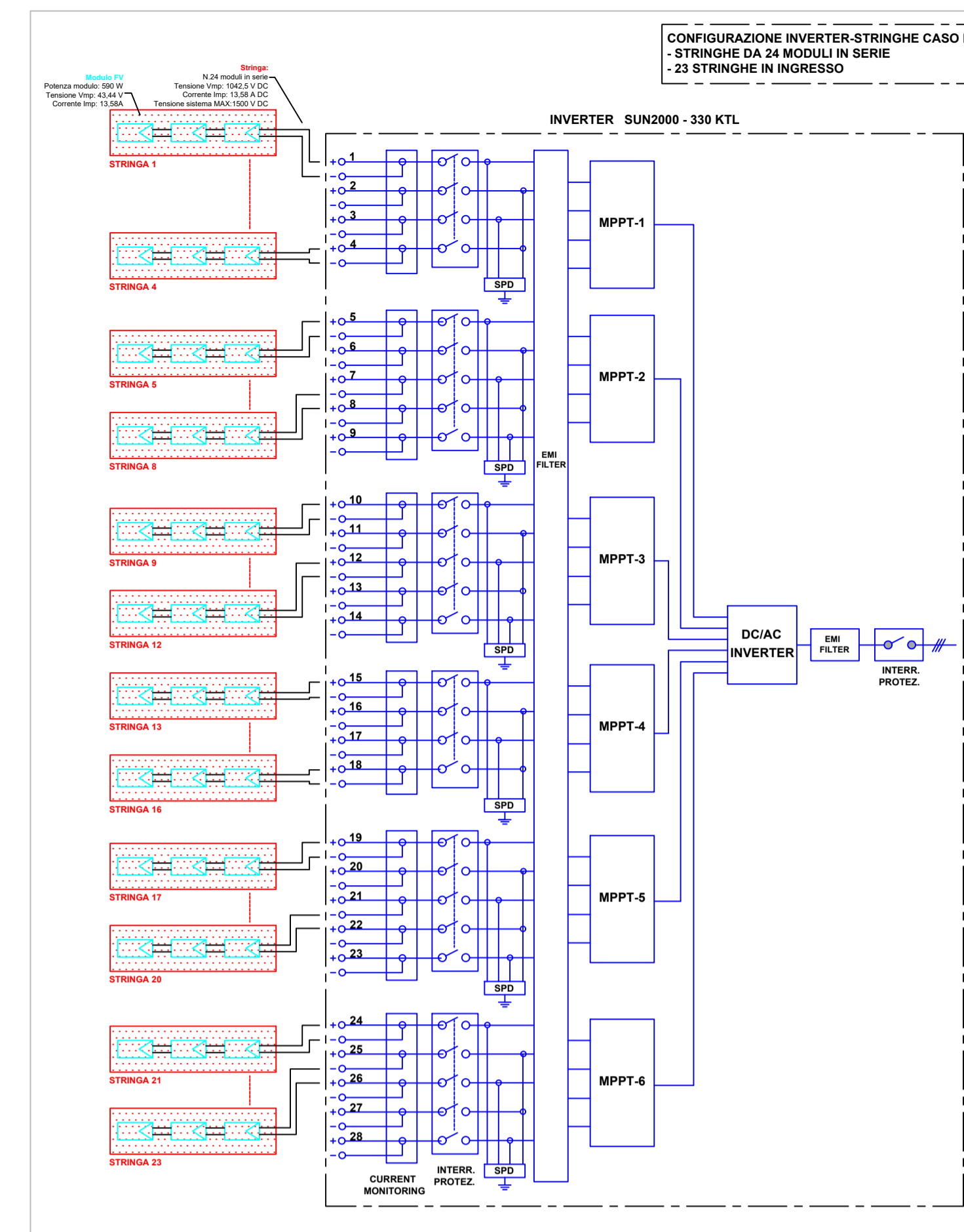
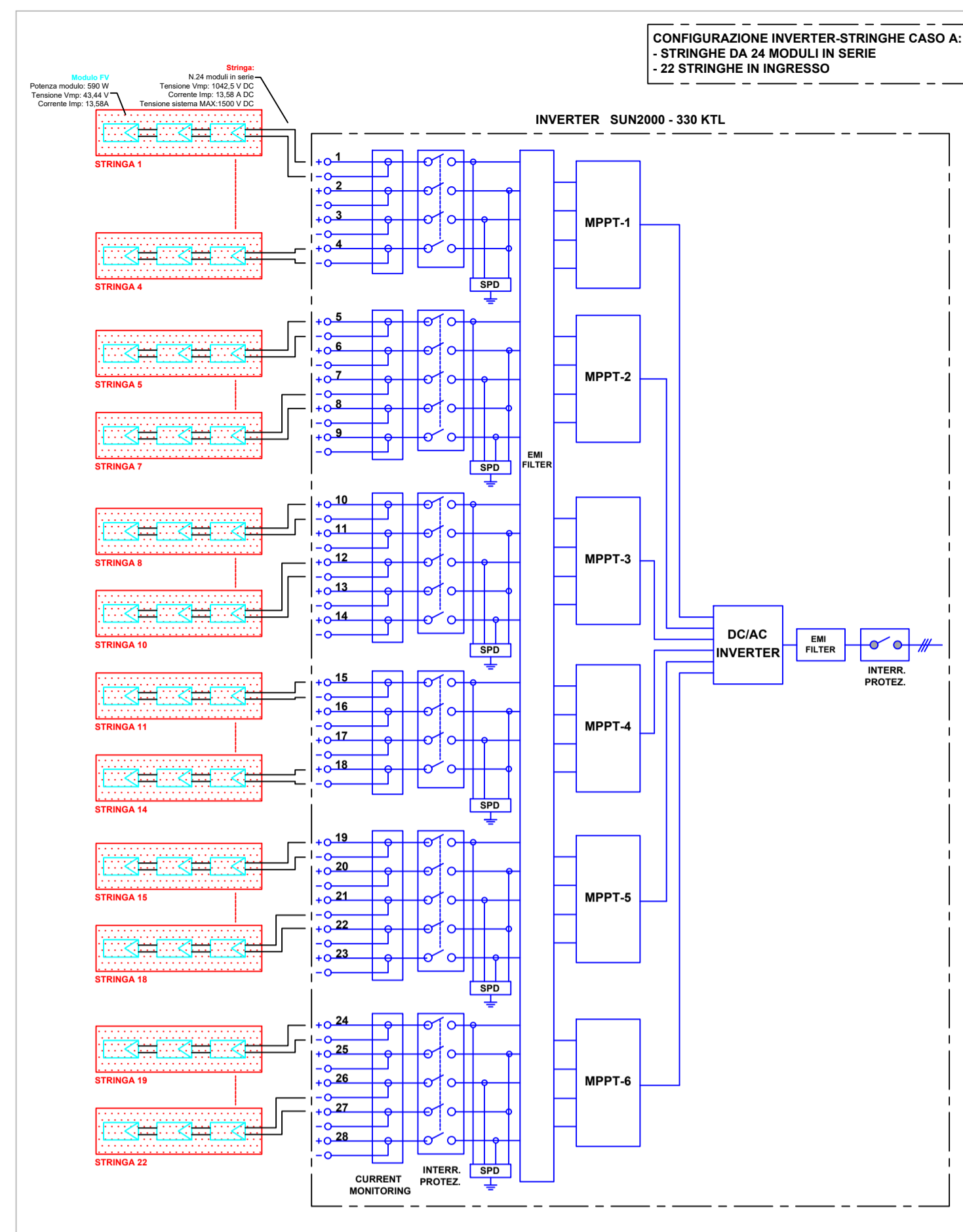
Revisione	Data	Elaborato	Verificato	Approvato	Descrizione
00	26/02/2024	Ing. Lauretti	Ing. Bartolazzi	ATON 36 S.r.l.	Schema unifilare impianto

Codice Elaborato	Scala	Formato
PSR-GRM-IE-01-V	-	A1

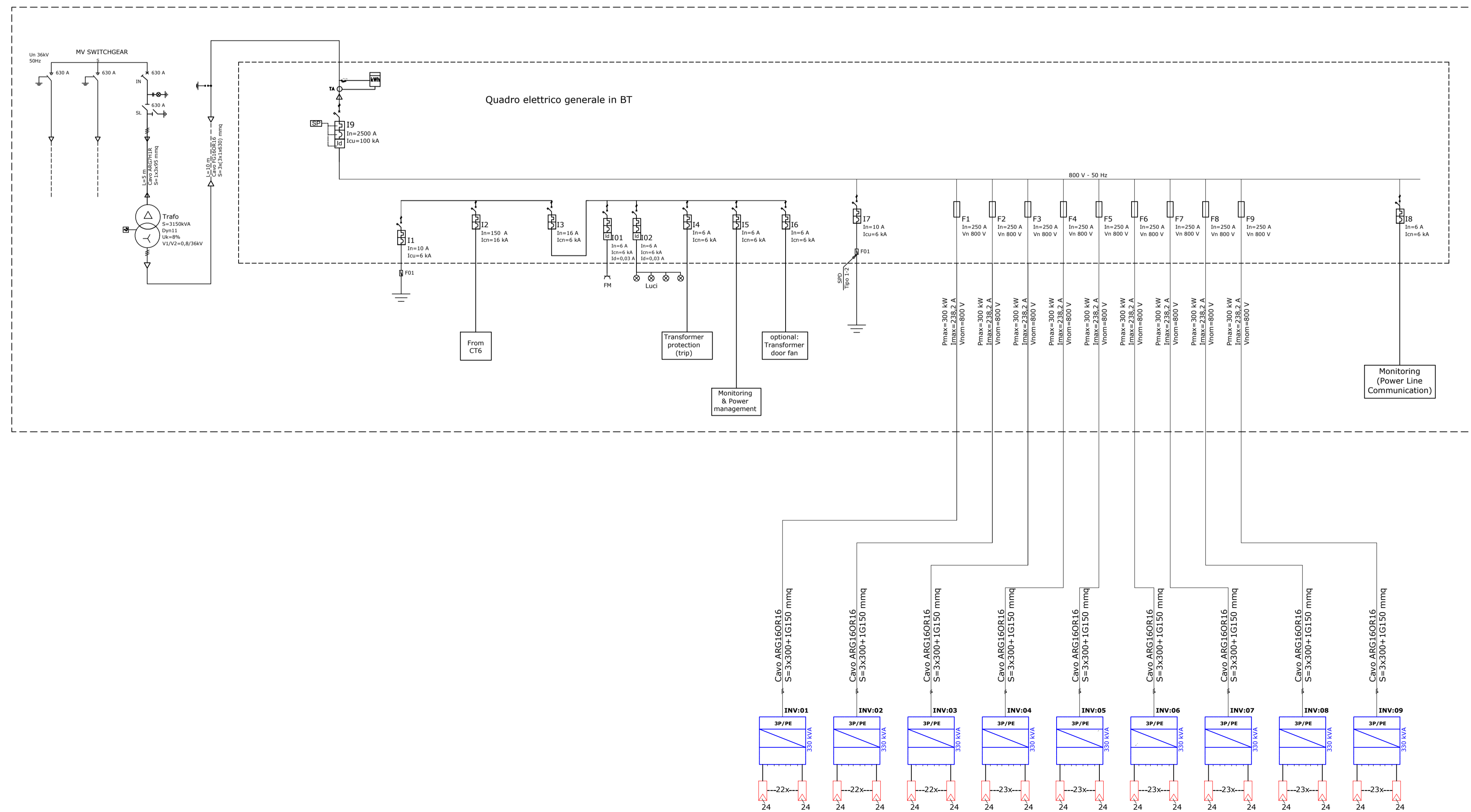


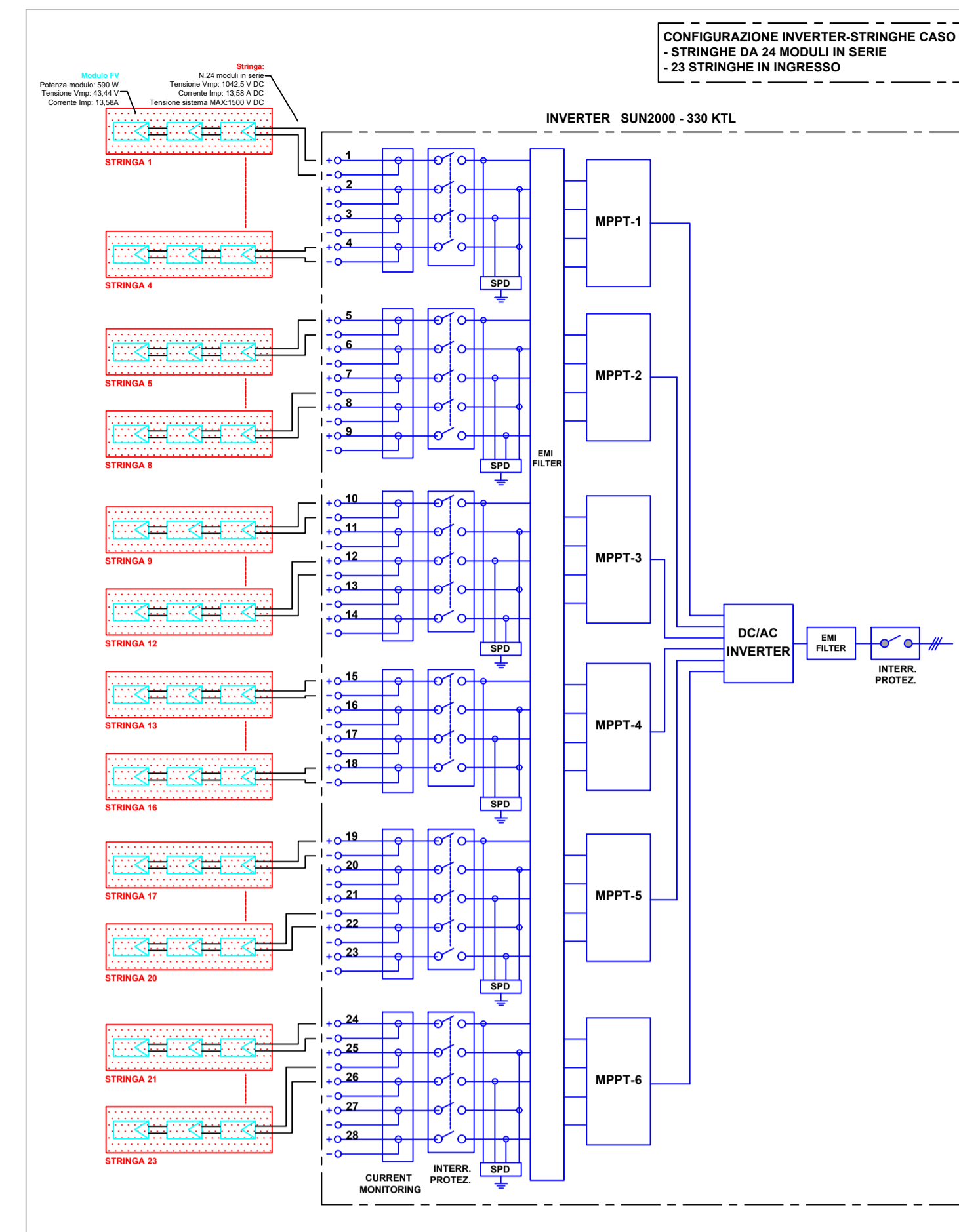
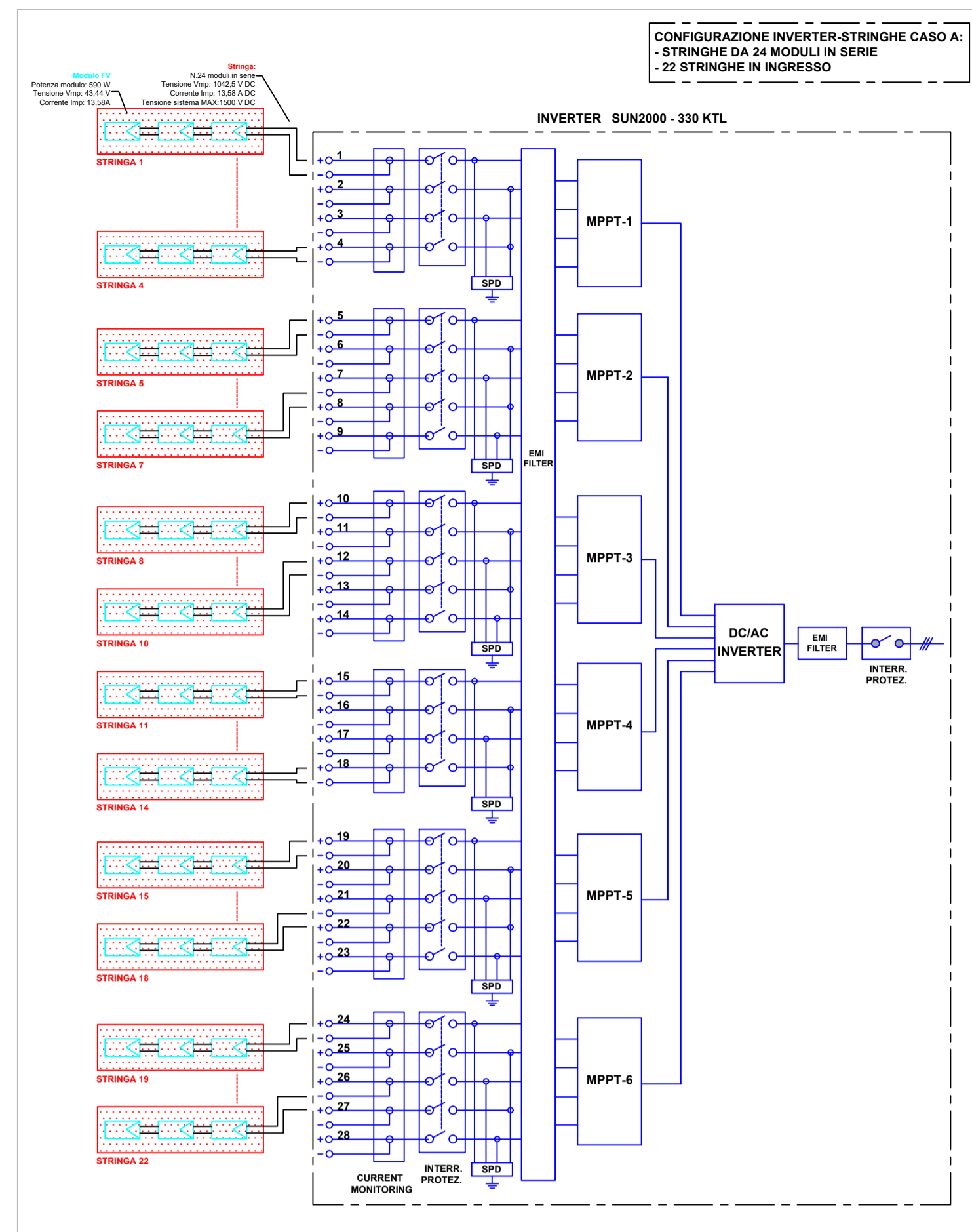
SCHEMA UNIFILARE DI COLLEGAMENTO INVERTER/QUADRO BT IN CABINA DI TRASFORMAZIONE CT1-SOTTOCAMPO 1



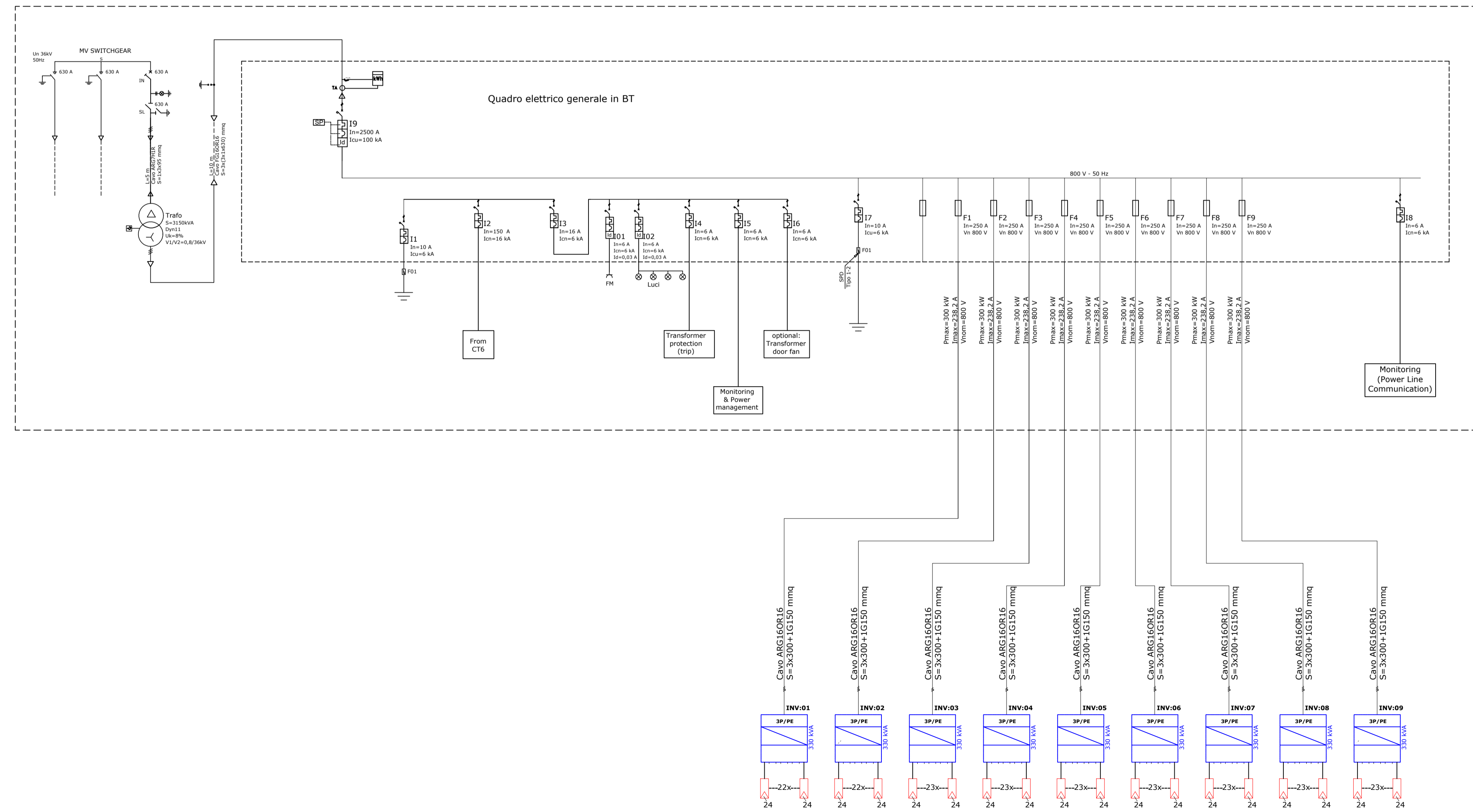


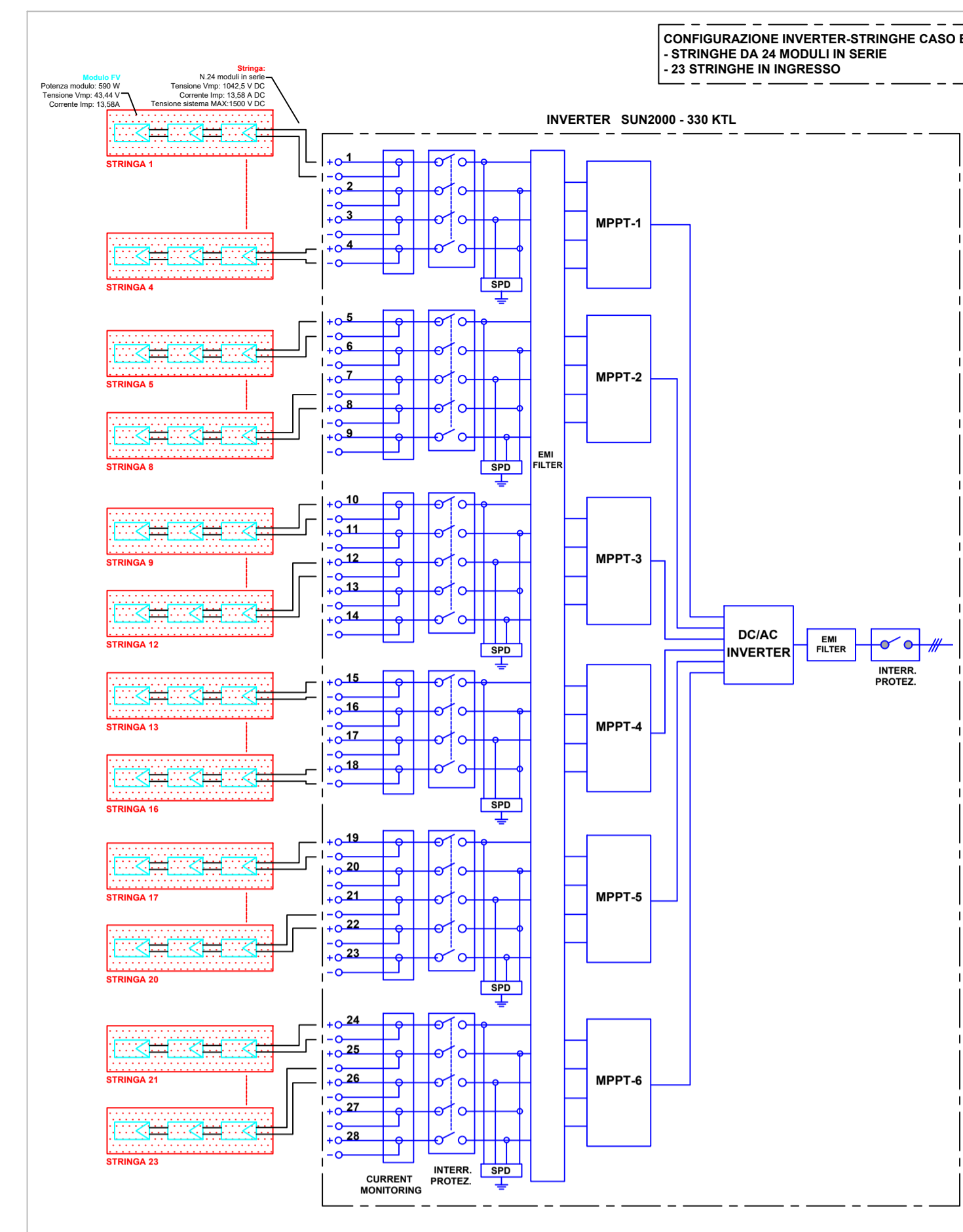
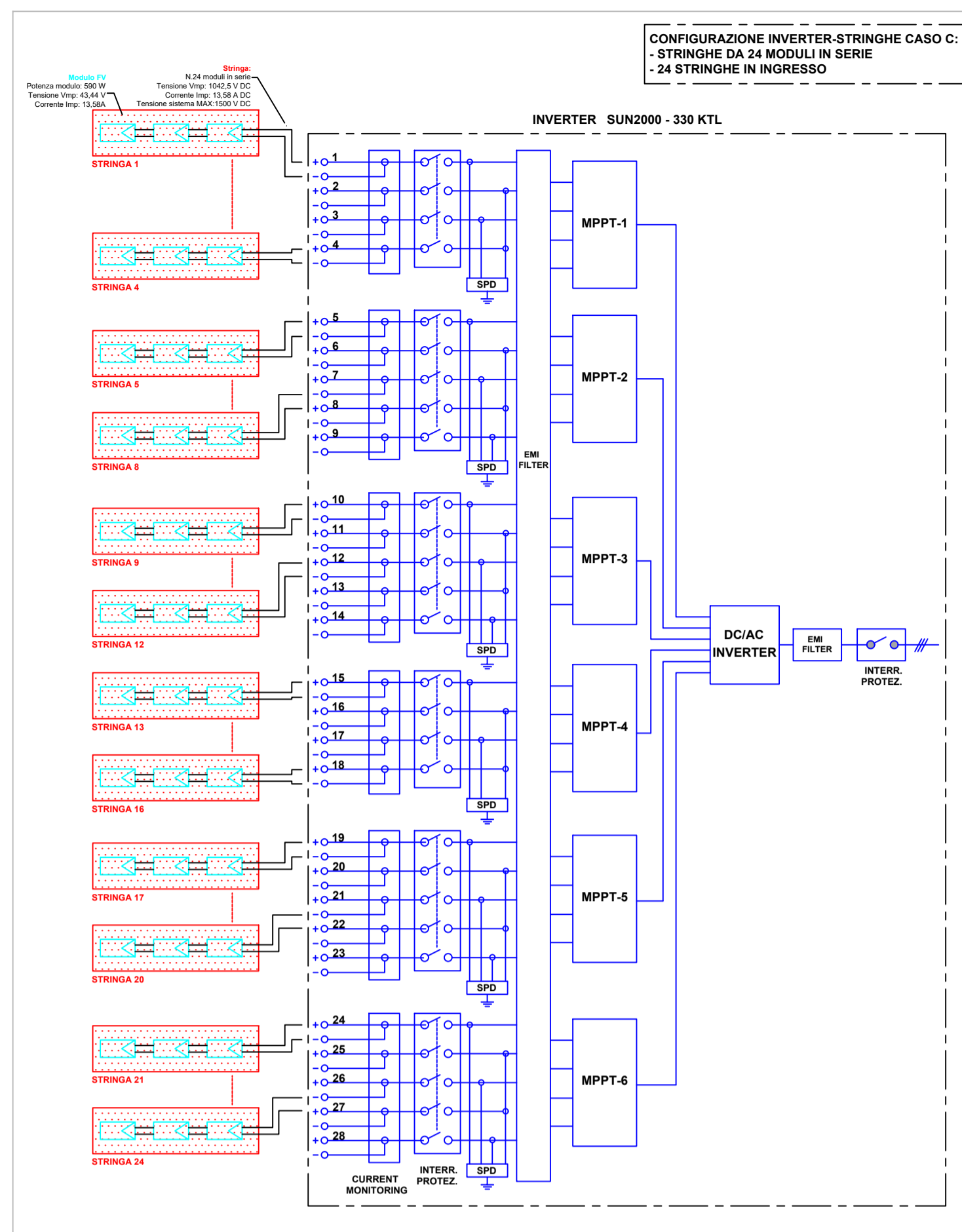
SCHEMA UNIFILARE DI COLLEGAMENTO INVERTER/QUADRO BT IN CABINA DI TRASFORMAZIONE CT2-SOTTOCAMPO 2



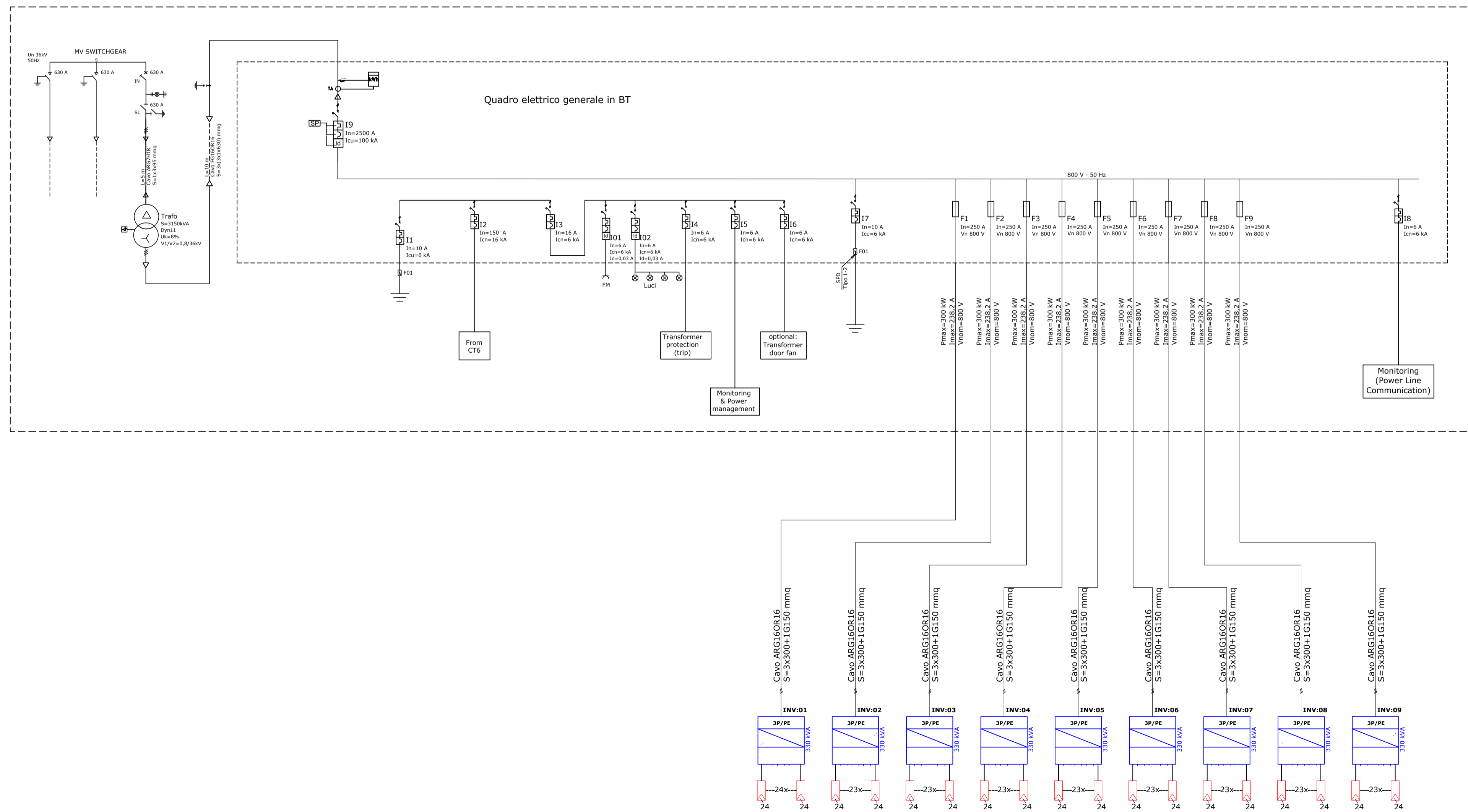


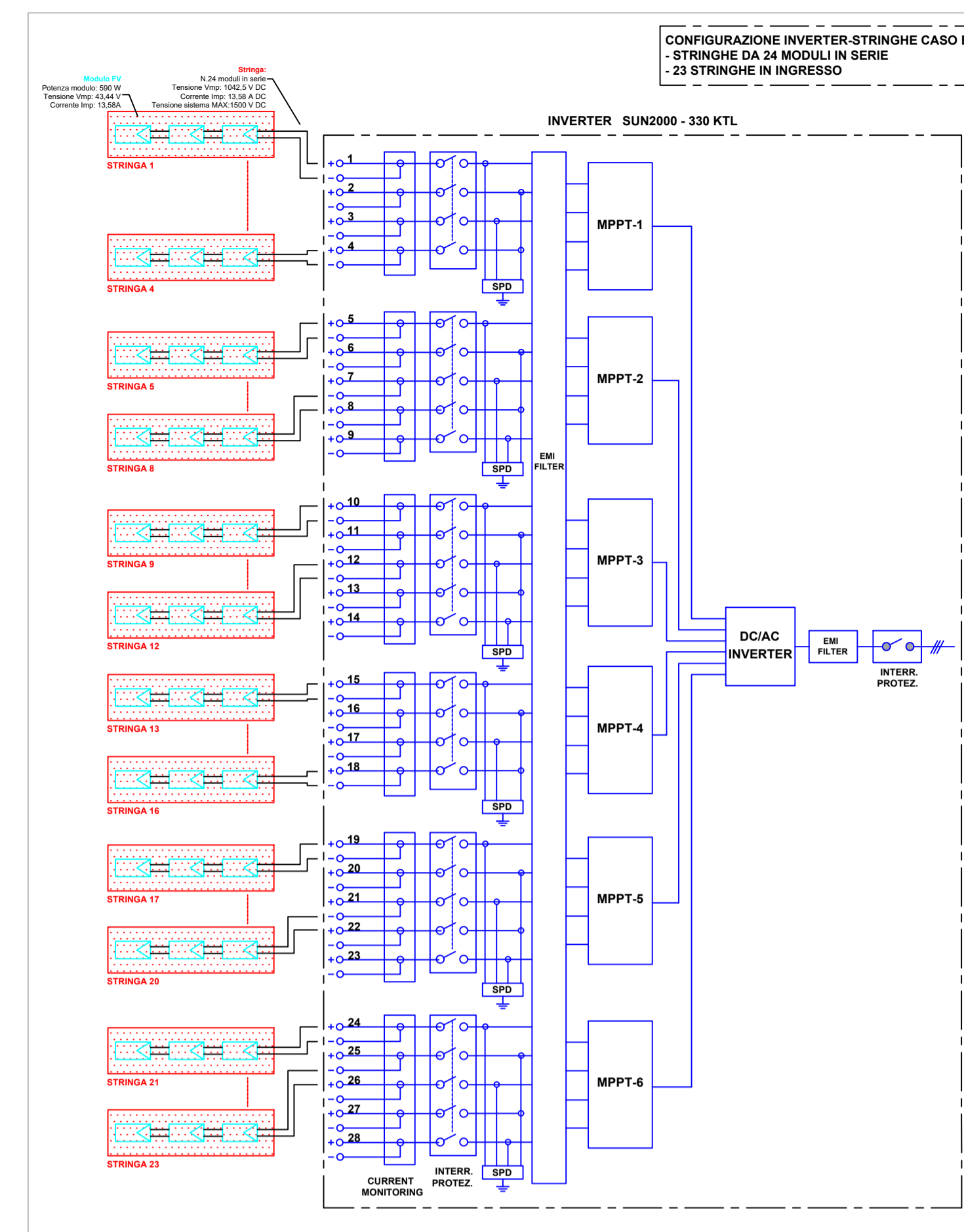
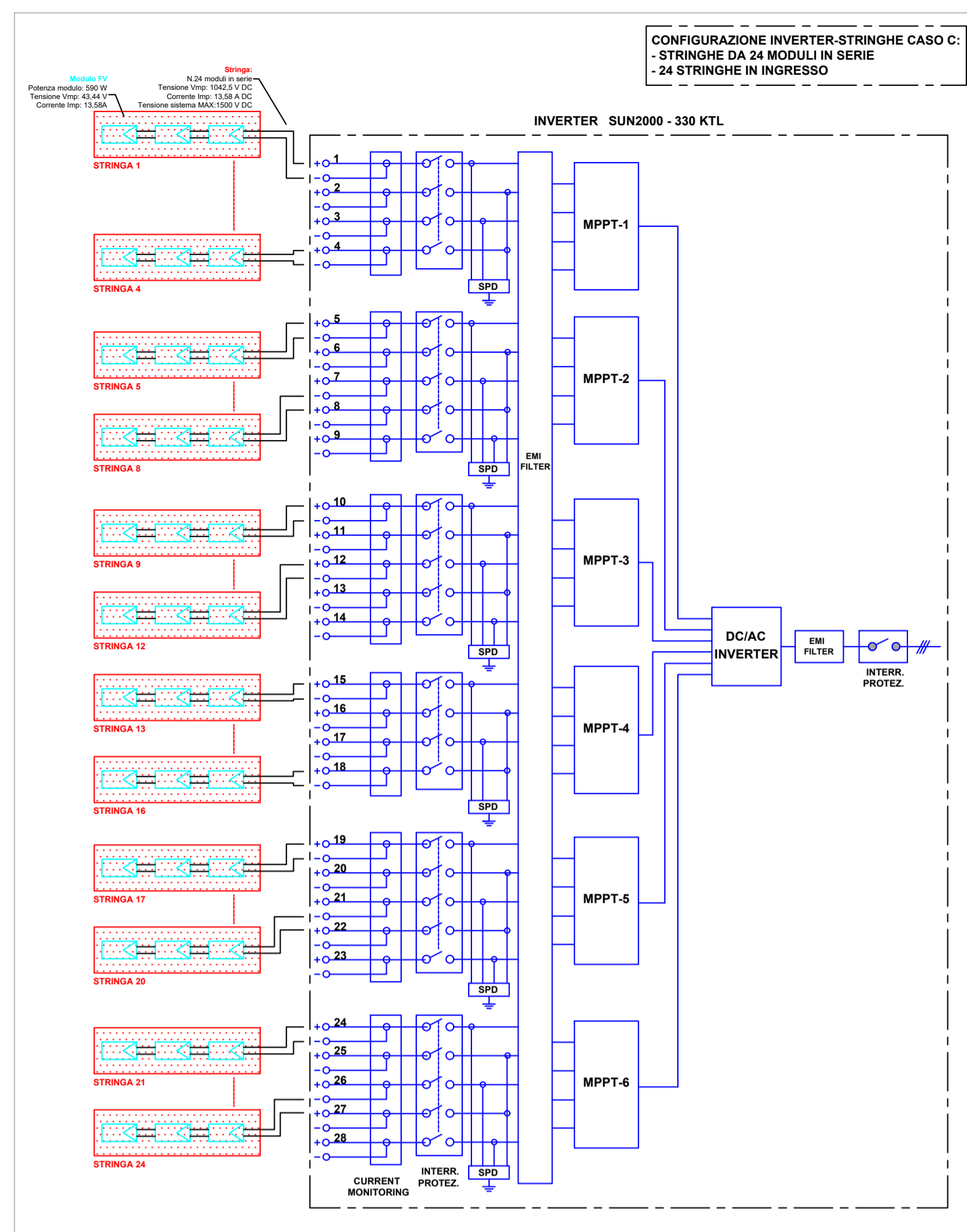
SCHEMA UNIFILARE DI COLLEGAMENTO INVERTER/QUADRO BT IN CABINA DI TRASFORMAZIONE CT3-SOTTOCAMPO 3





SCHEMA UNIFILARE DI COLLEGAMENTO INVERTER/QUADRO BT IN CABINA DI TRASFORMAZIONE CT5-SOTTOCAMPO 5





SCHEMA UNIFILARE DI COLLEGAMENTO INVERTER/QUADRO BT IN CABINA DI TRASFORMAZIONE CT6-SOTTOCAMPO 6

