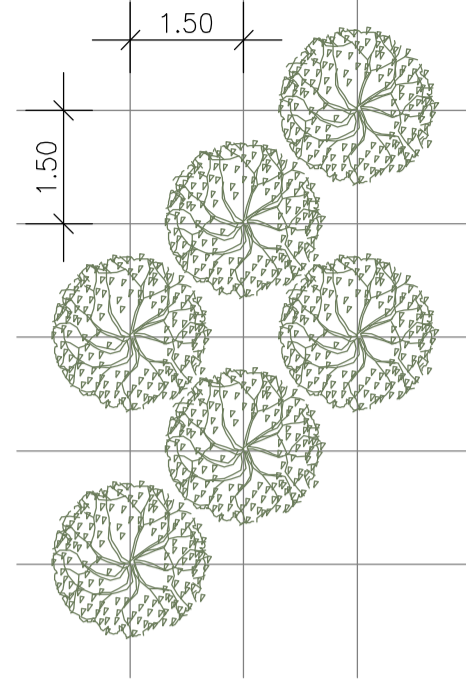
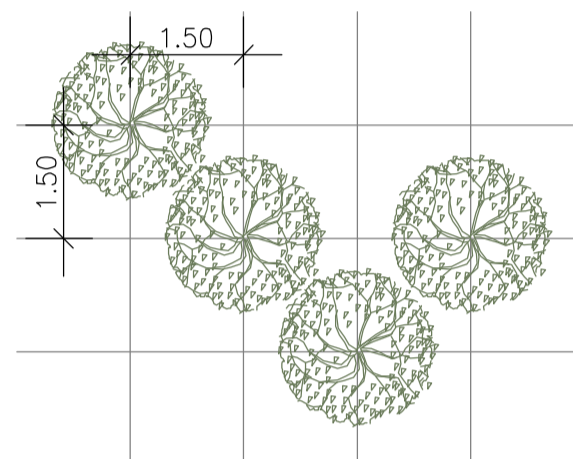


TIPOLOGICI CON JUNIPERUS PHOENICA  
scala 1:100

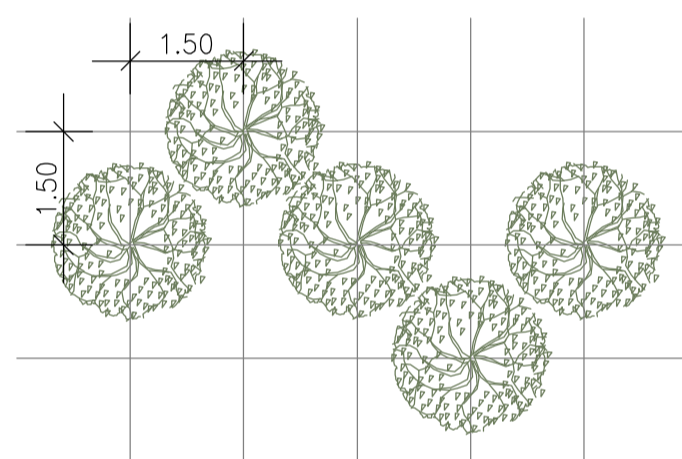
TIPOLOGICO JP1



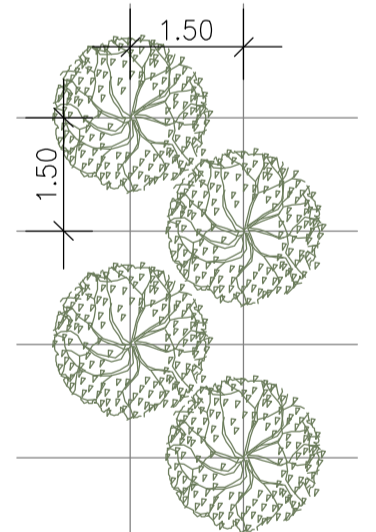
TIPOLOGICO JP2



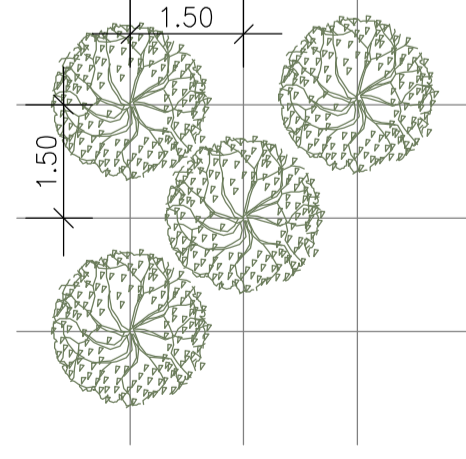
TIPOLOGICO JP3



TIPOLOGICO JP4



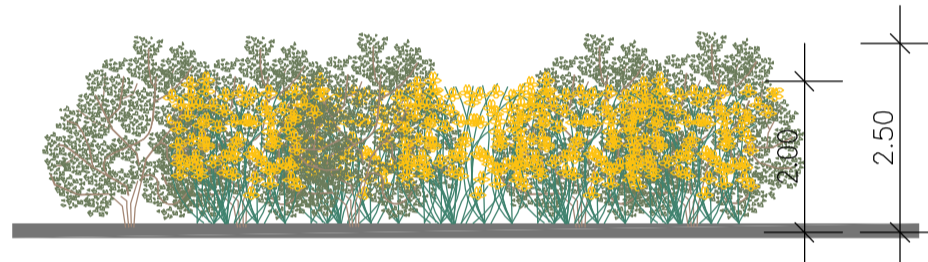
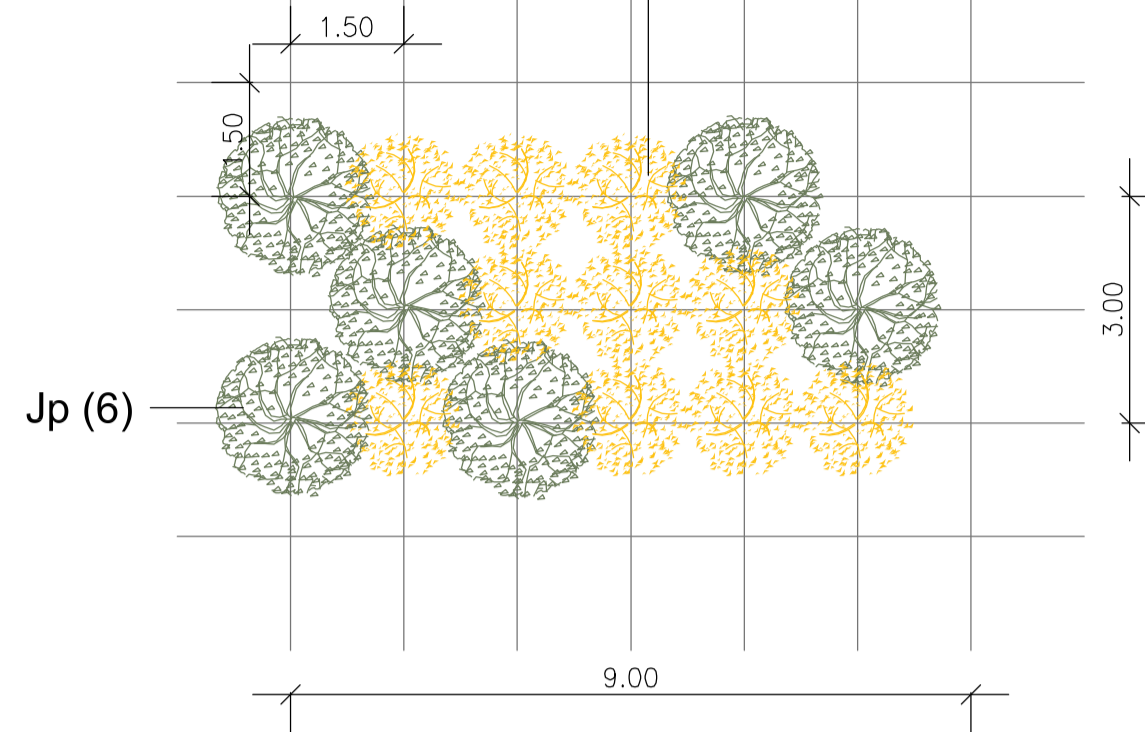
TIPOLOGICO JP5



GRUPPO ARBUSTIVO - GA9  
scala 1:100

Sj - Spartium junceum  
Jp - Juniperus phoenica

Sj (10)

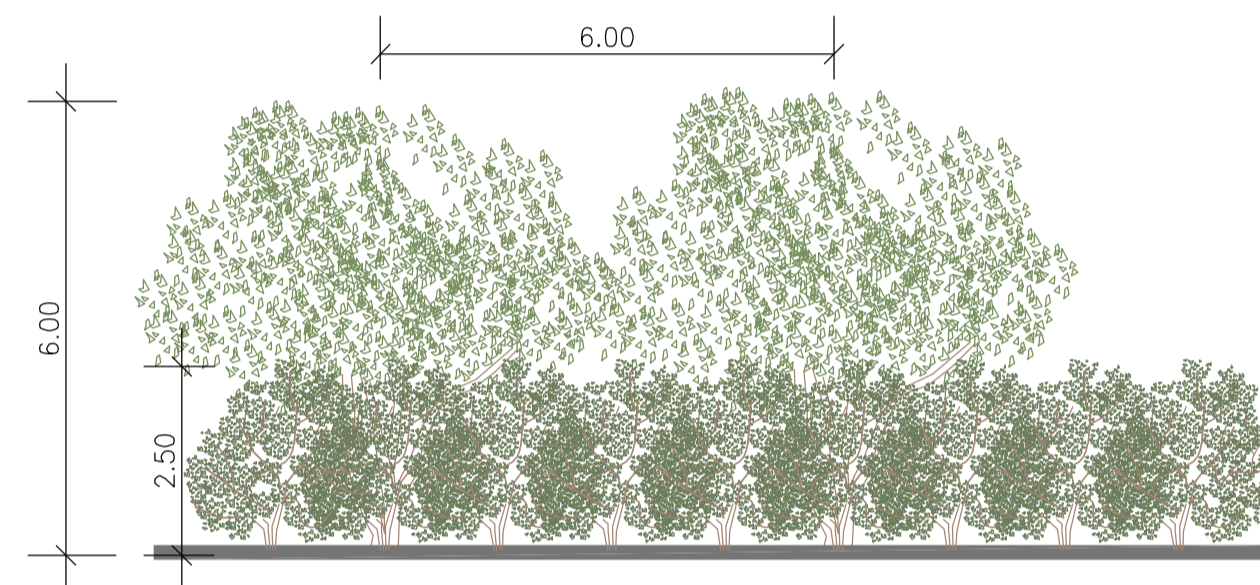
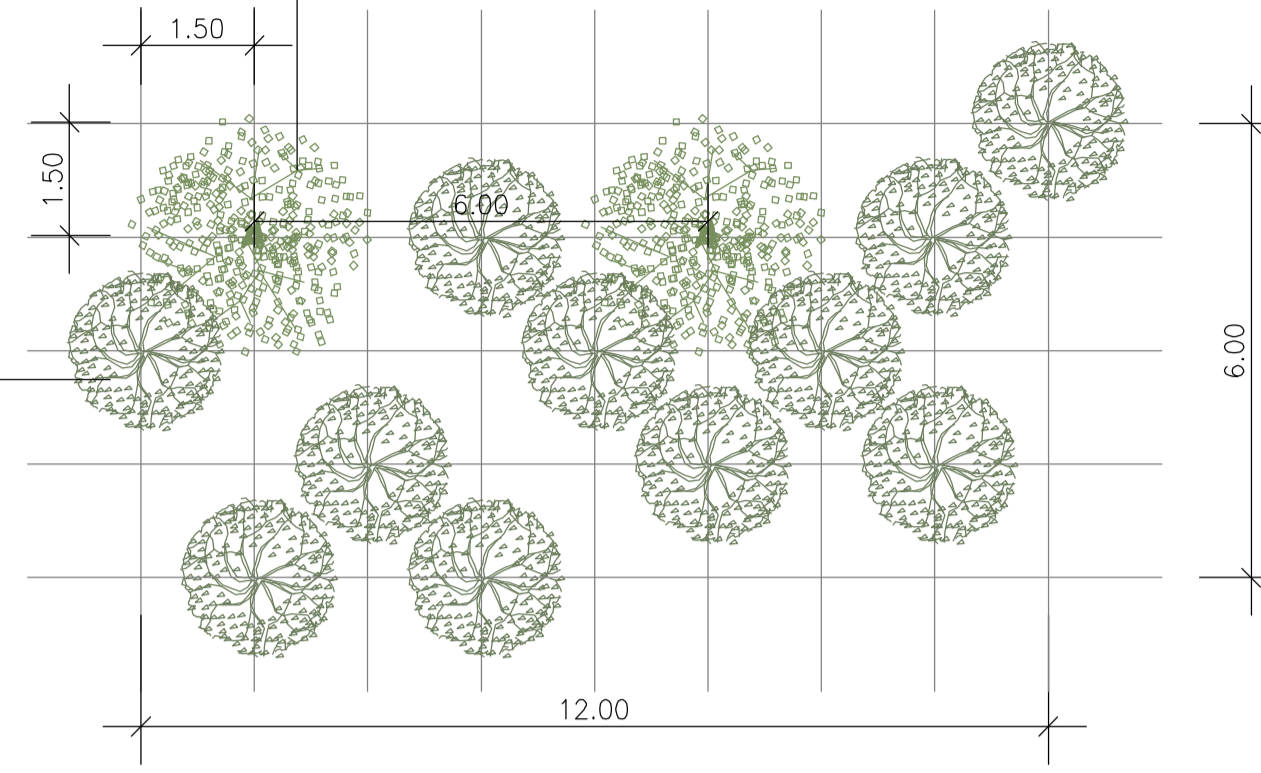


FILARE ARBOREO-ARBUSTIVO - AA8  
scala 1:100

LI - Ligustrum lucidum  
Jp - Juniperus phoenica

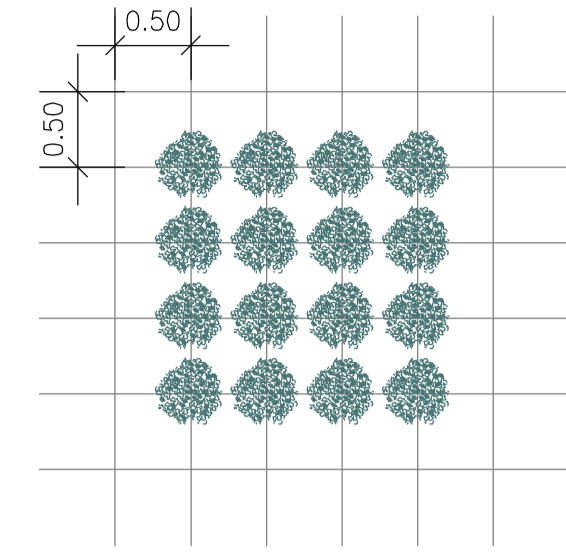
LI(2)

Jp (11)

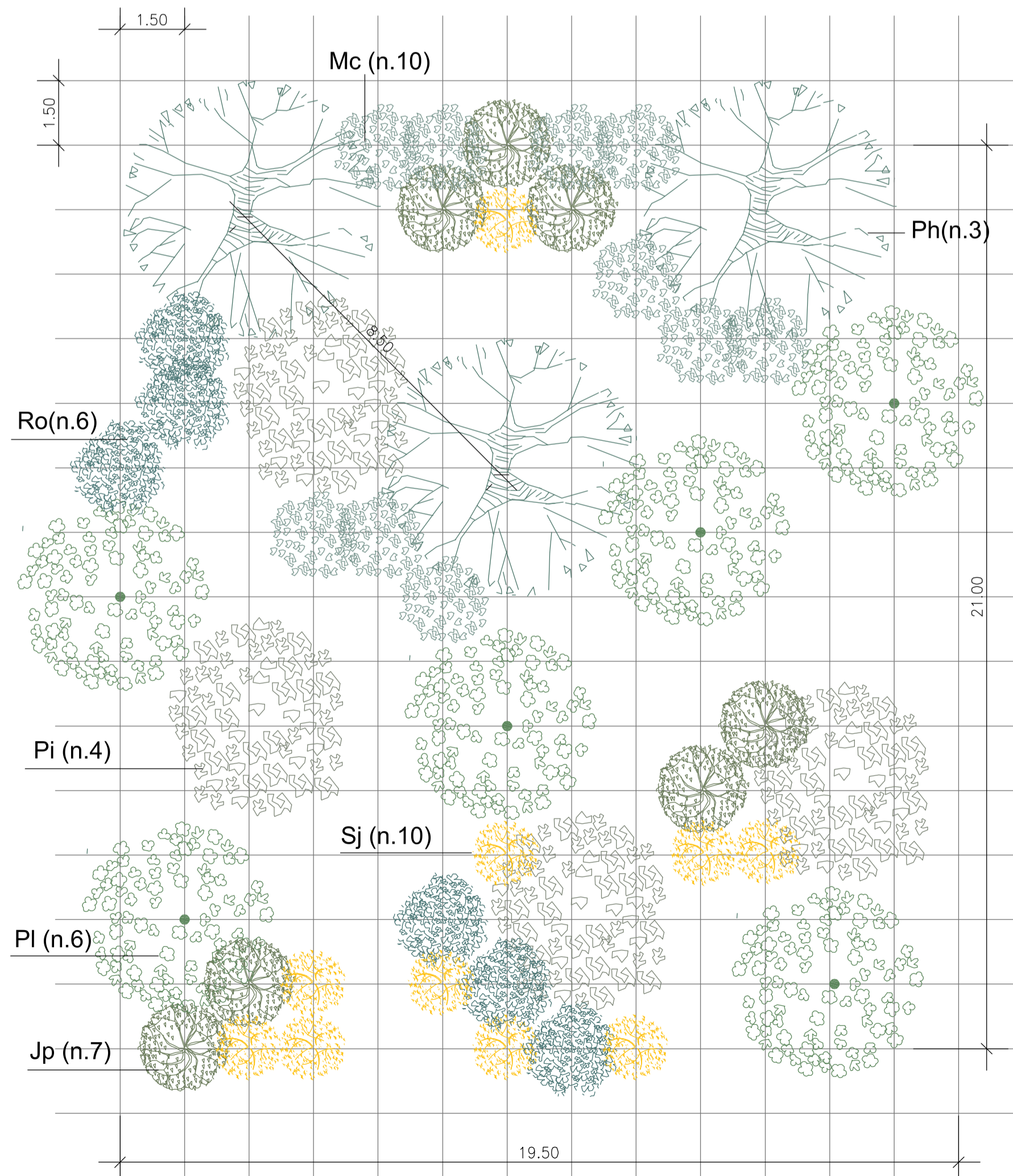
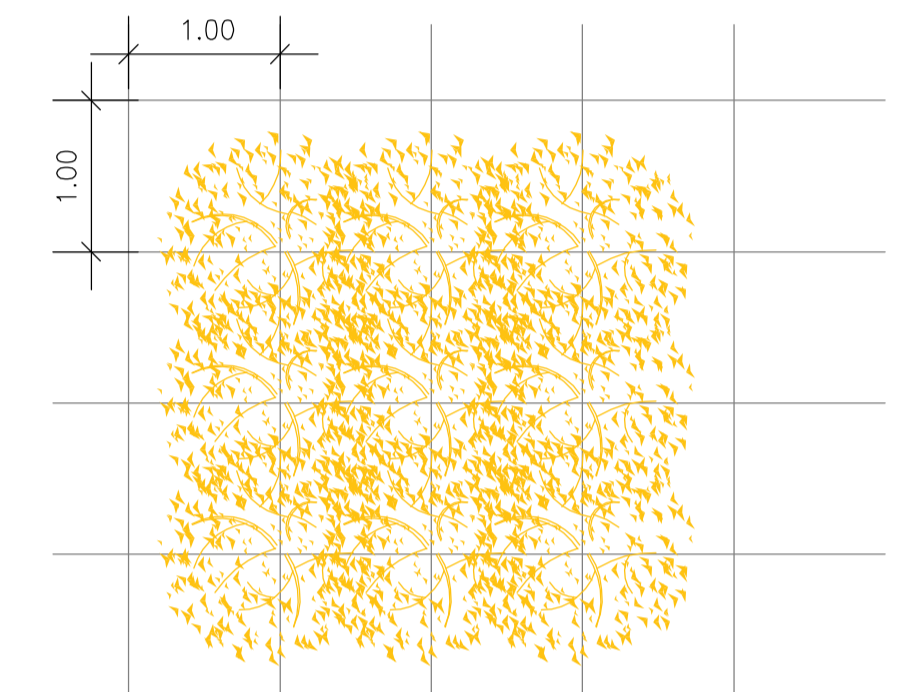


TIPOLOGICO RO6 - CI6 - CM6  
scala 1:50

CI - Cistus incanus  
CM - Cistus monspeliensis  
RO - Rosmarinus officinalis

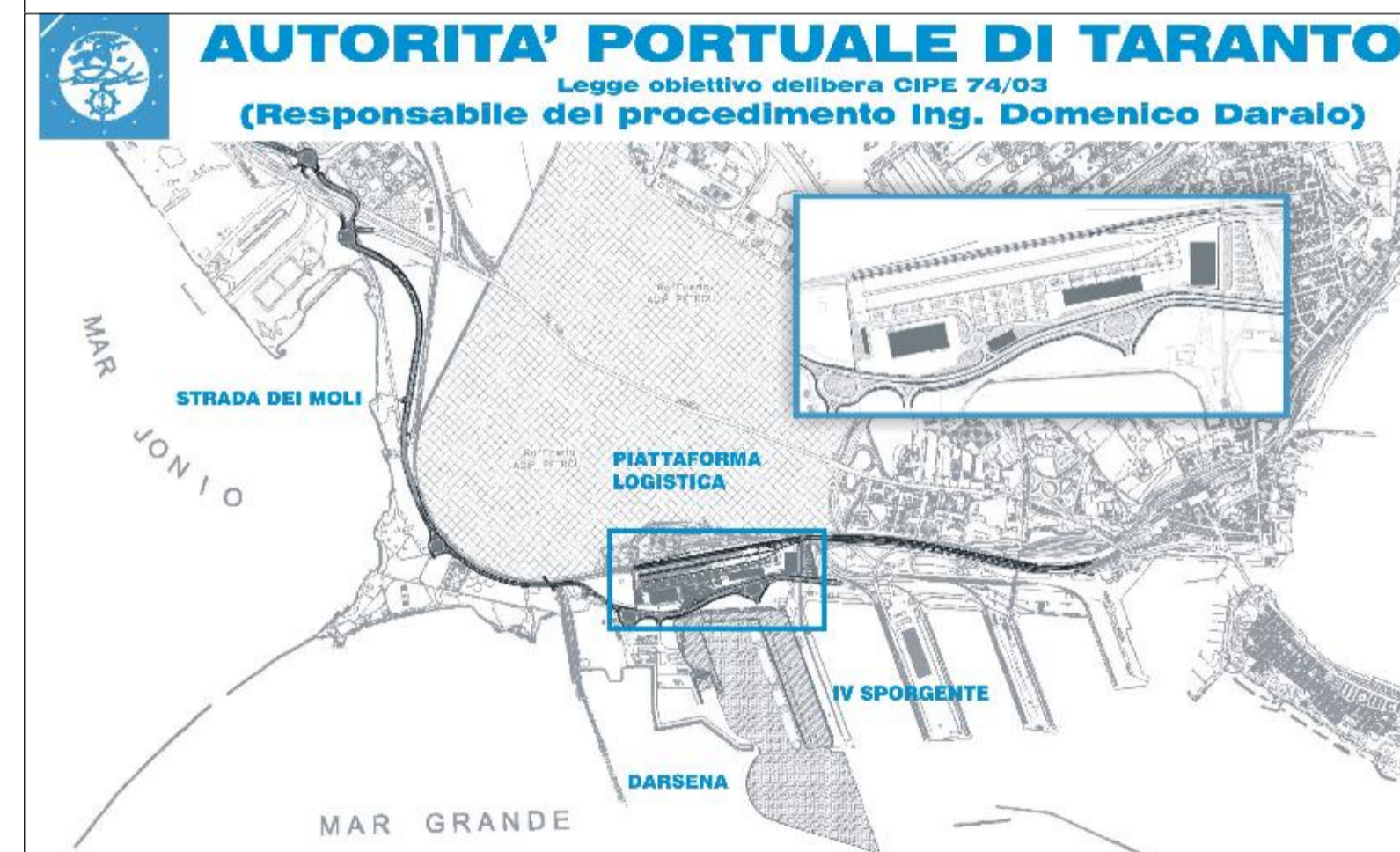


TIPOLOGICO SPARTIUM JUNCEUM - SJ7  
scala 1:50



FASCIA ARBOREO-ARBUSTIVA - FAA10  
scala 1:100

Ph - Pinus halepensis  
Pi - Pistacia lentiscus  
PI - Phillyrea latifolia  
Mc - Myrtus communis  
Sj - Spartium junceum  
Jp - Juniperus phoenica  
Ro - Rosmarinus officinalis



01	29-09-2006	Prima emissione	E. Vincini	P.L. Carci	ING. G. Geddo
revisione	data	descrizione revisione	disegnato	verificato	approvato

**SOCIETA' DI PROGETTO:**  
**TARANTO LOGISTICA S.p.A.**

**AUTORITA' PORTUALE TARANTO**

**PIASTRA PORTUALE DI TARANTO**

Progettista: **SINA**

Consulenti Progettisti: **BATIMAT S.p.A.**

Progetto n°: **123-700**

Titolo: **PROGETTO DEFINITIVO STRADA DEI MOLI OPERE A VERDE Sesti d'impianto e dettagli costruttivi**