

Quadro organizzativo del progetto

WBS - Opere di linea

Table with columns for work items, descriptions, and codes for 'WBS - Opere di linea'.

WBS - Opere su piazzali

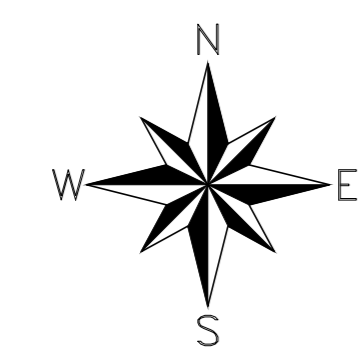
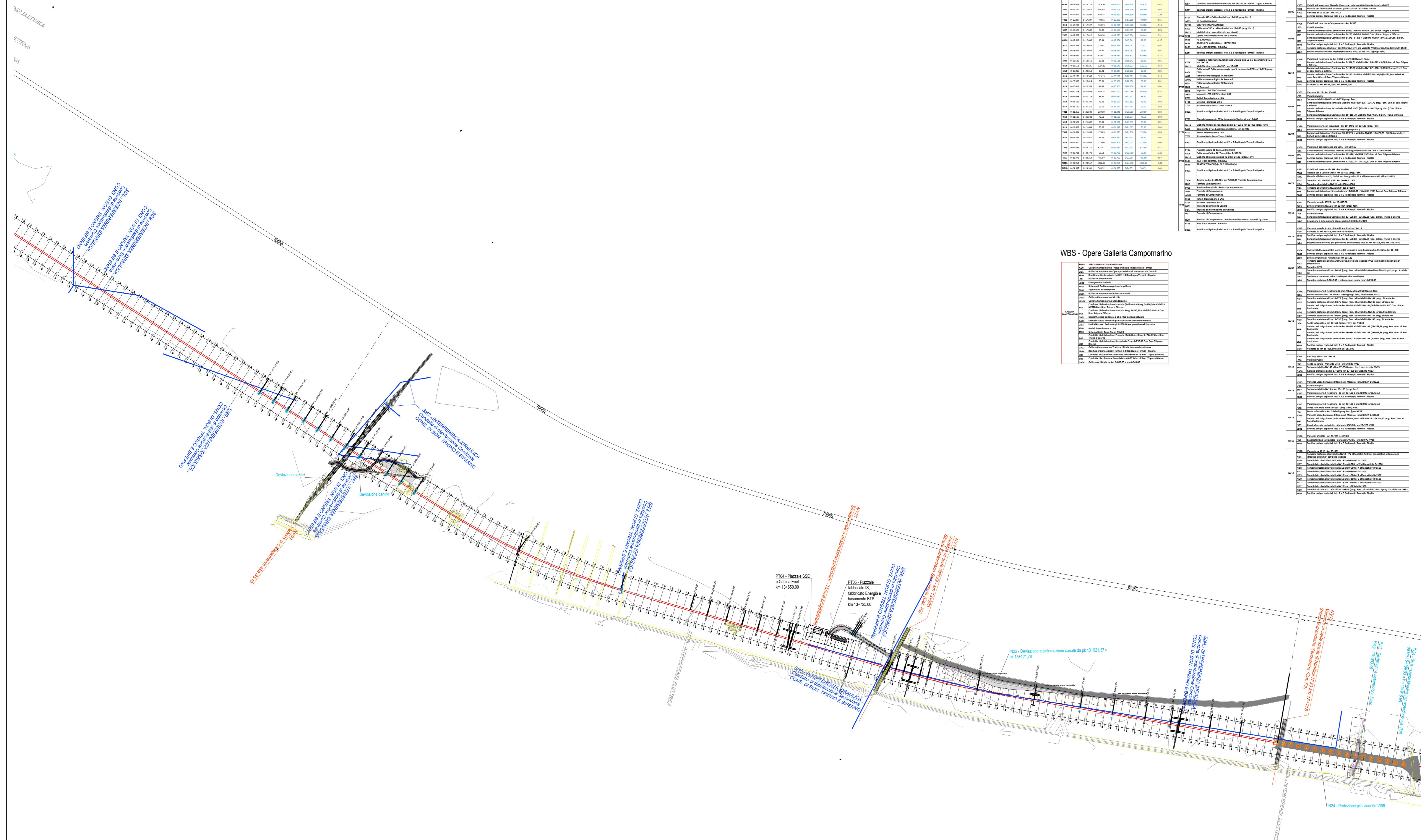
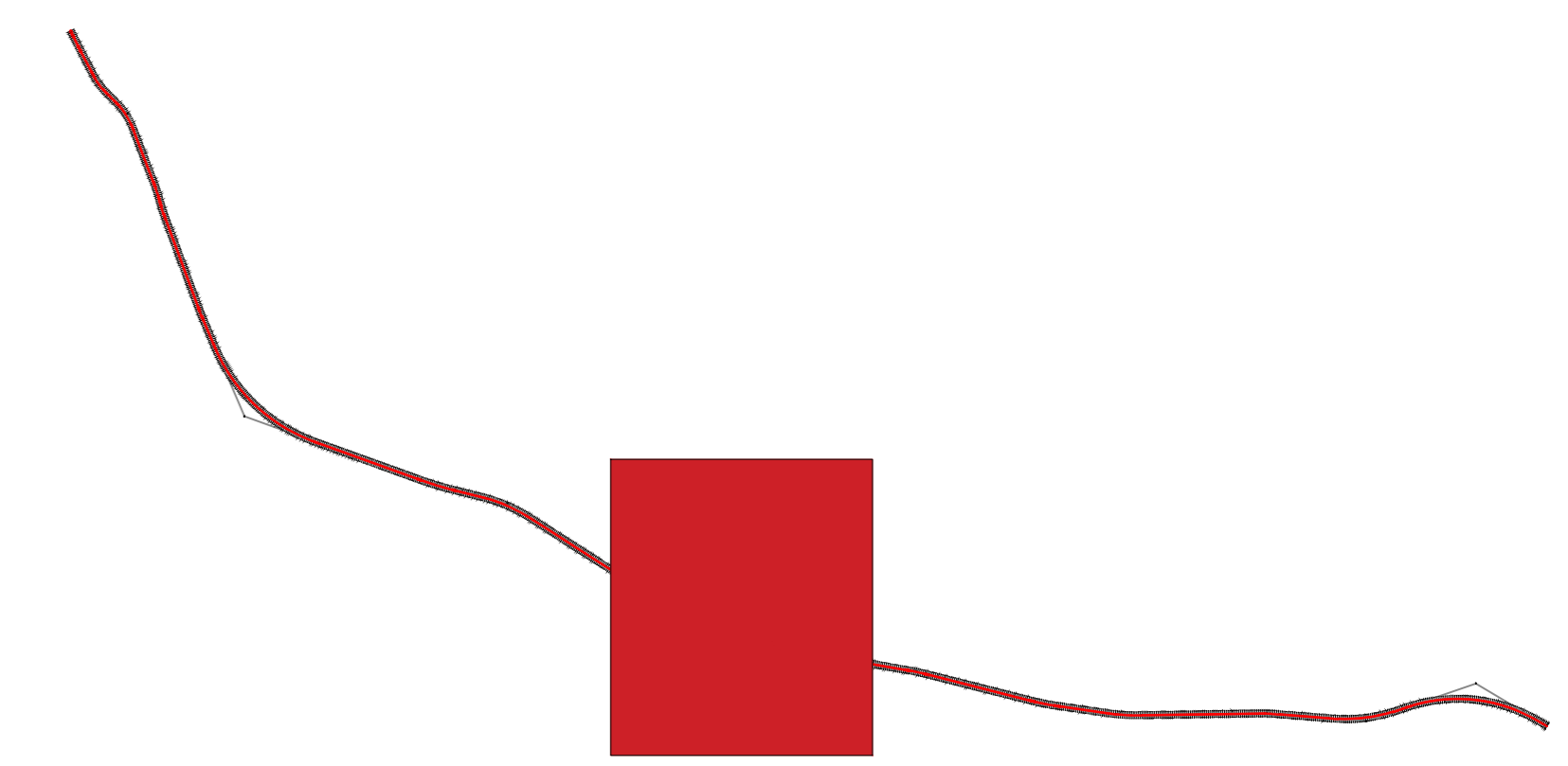
Table with columns for work items, descriptions, and codes for 'WBS - Opere su piazzali'.

WBS - Opere su viabilità stradale

Table with columns for work items, descriptions, and codes for 'WBS - Opere su viabilità stradale'.

WBS - Opere Galleria Campomarino

Table with columns for work items, descriptions, and codes for 'WBS - Opere Galleria Campomarino'.



Project information block containing logos for RFI, ITALFERR, ACOSTINGO, and ATLANTE, project title 'LINEA PESCARA - BARI RADDOPPIO DELLA TRATTA FERROVIARIA TERMOLI - LESINA LOTTO 2 e 3: RADDOPPIO TERMOLI - RIPALTA', and a revision table.