

Quadro organizzativo del progetto

WBS - Opere di linea

Table with columns for task ID, description, and duration. Lists various construction tasks for the main line works.

WBS - Opere su piazzali

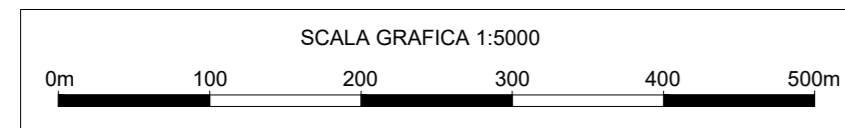
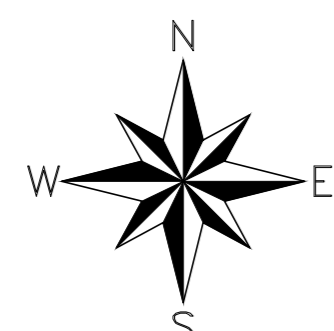
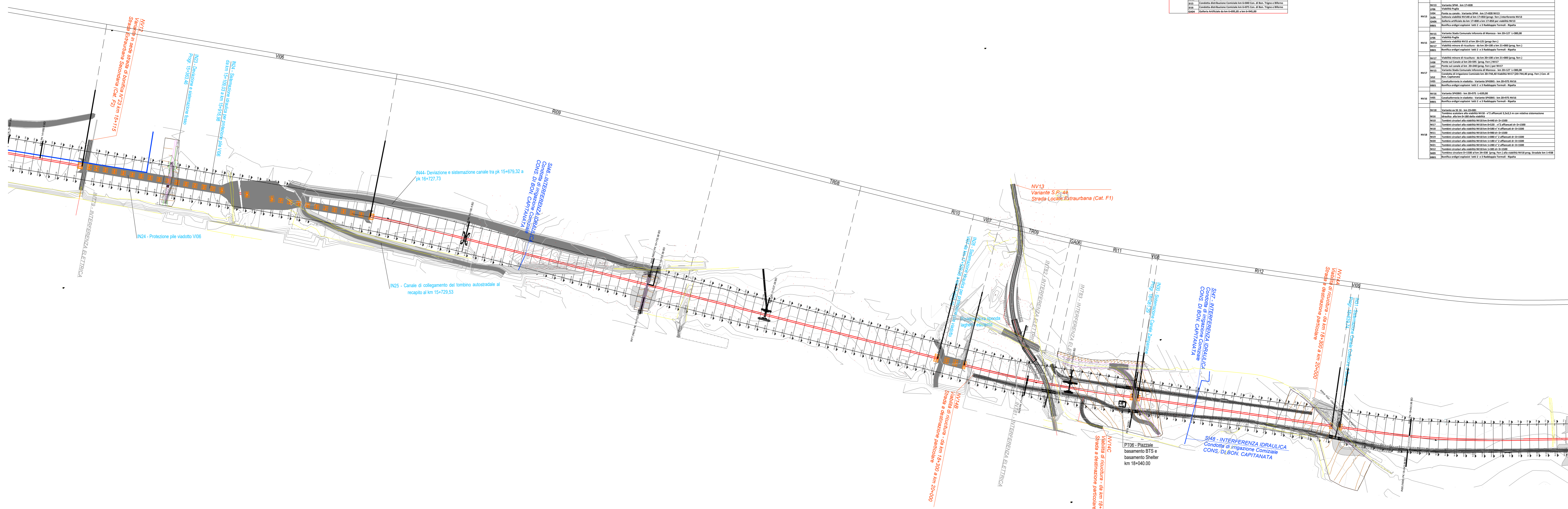
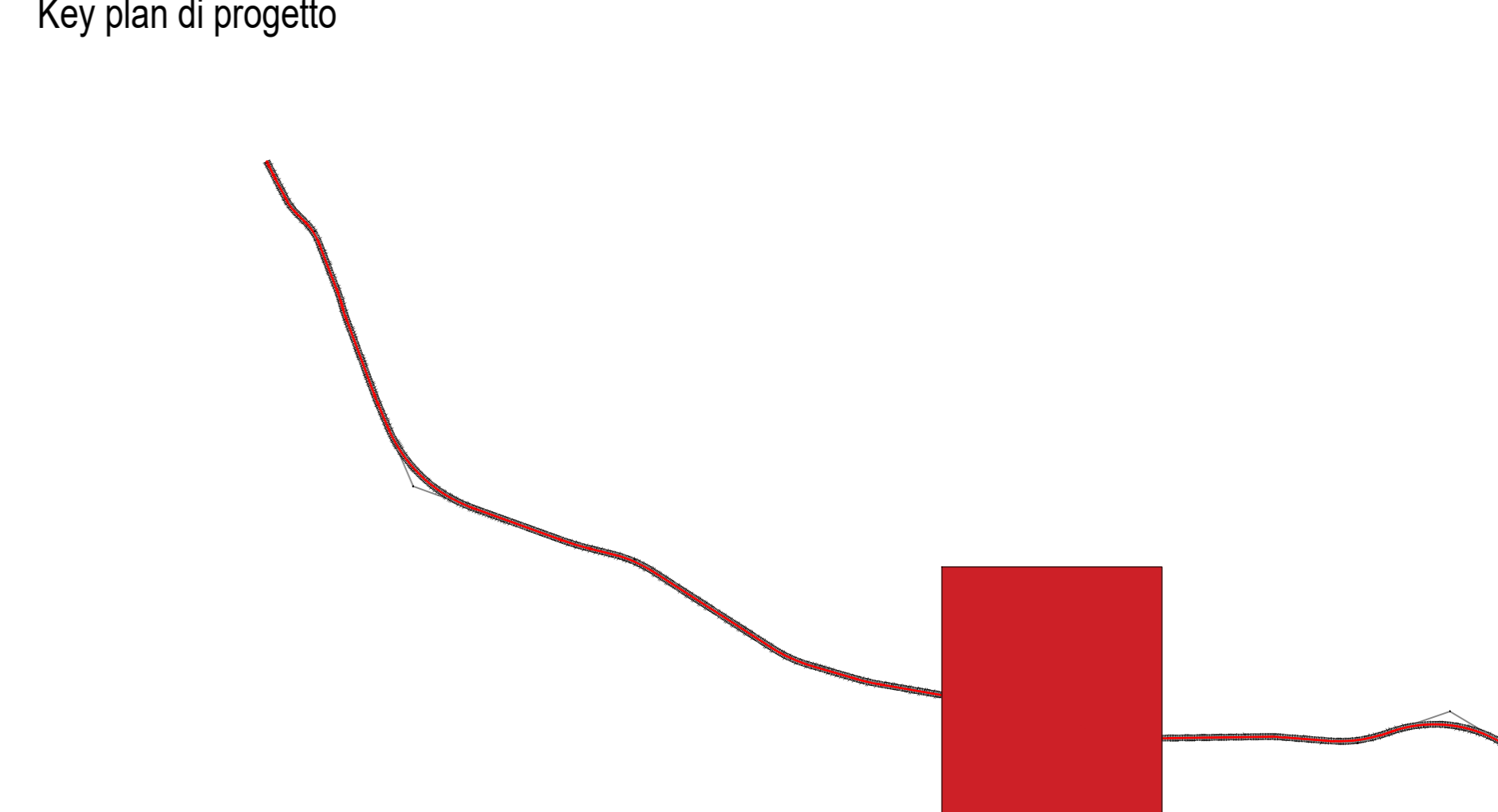
Table with columns for task ID, description, and duration. Lists construction tasks for platform works.

WBS - Opere su viabilità stradale

Table with columns for task ID, description, and duration. Lists construction tasks for road infrastructure.

WBS - Opere Galleria Campomarino

Table with columns for task ID, description, and duration. Lists construction tasks for the Campomarino tunnel.



Project information block containing logos for RFI, ITALFERR, ACOSTINGO, ATLANTE, HUB, and JHYpro. Includes project title 'LINEA PESCARA - BARI RADDOPPIO DELLA TRATTA FERROVIARIA TERMOLI - LESINA LOTTO 2 e 3: RADDOPPIO TERMOLI - RIPALTA', a revision table, and a scale of 1:5000.