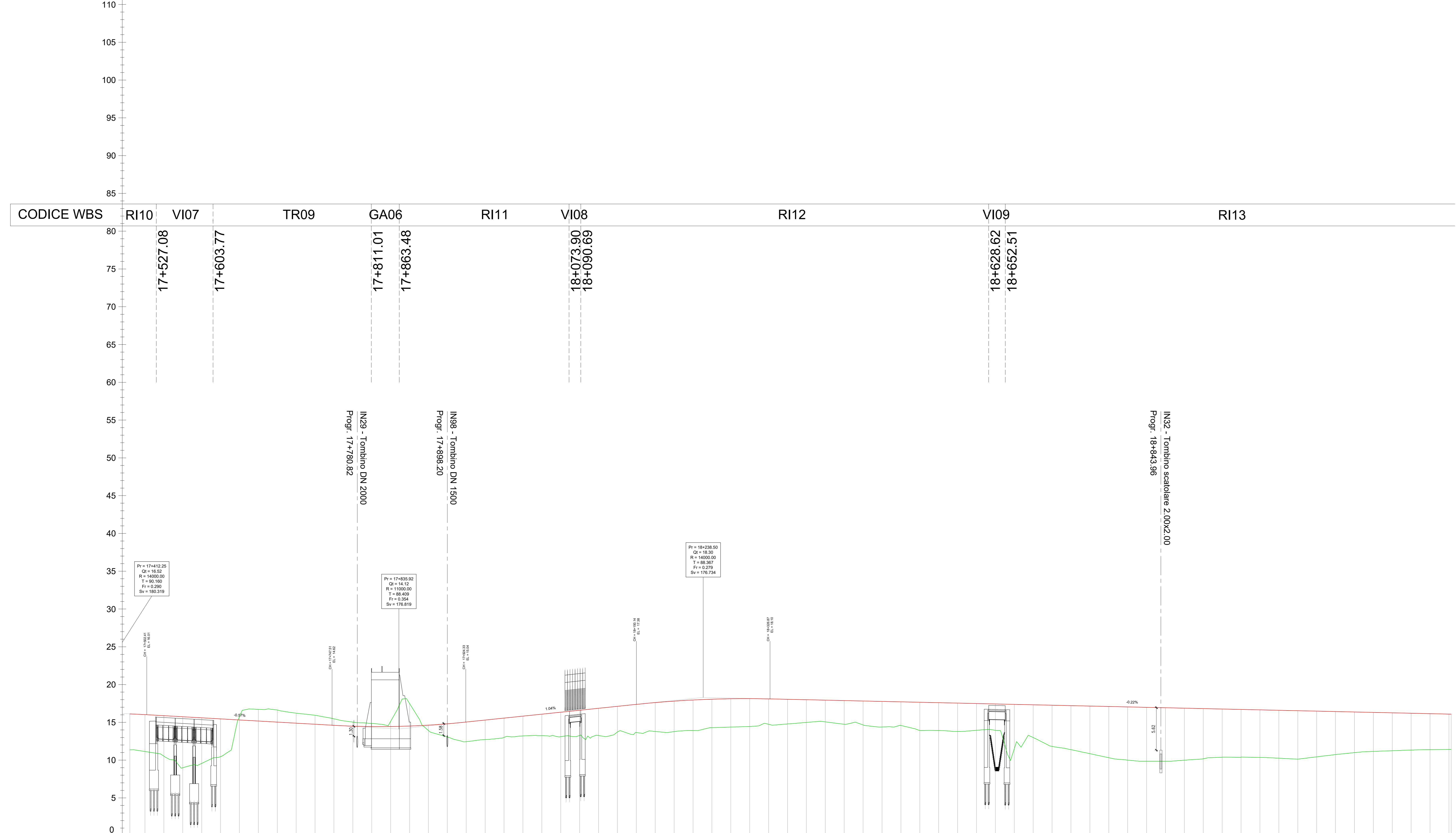


LIVELLETTA
Binario Pari

h = -1.39
L = 423.67 m
i = -5.67‰

h = 2.34
L = 402.58 m
i = 10.39‰

h = -2.14
L = 1118.59 m
i = -2.24‰



N° SEZIONE	701	702	703	704	705	706	707	708	709	710	711	712	713	714	715	716	717	718	719	720	721	722	723	724	725	726	727	728	729	730	731	732	733	734	735	736	737	738	739	740	741	742	743	744	745	746	747	748	749	750	751	752	753	754	755	756	757	758	759	760	761	762	763	764	765	766	767	768	769	770																																																																	
DISTANZE PROGRESSIVE	17+500.00	17+525.00	17+550.00	17+575.00	17+600.00	17+625.00	17+650.00	17+675.00	17+700.00	17+725.00	17+750.00	17+775.00	17+800.00	17+825.00	17+850.00	17+875.00	17+900.00	17+925.00	17+950.00	17+975.00	18+000.00	18+025.00	18+050.00	18+075.00	18+100.00	18+125.00	18+150.00	18+175.00	18+200.00	18+225.00	18+250.00	18+275.00	18+300.00	18+325.00	18+350.00	18+375.00	18+400.00	18+425.00	18+450.00	18+475.00	18+500.00	18+525.00	18+550.00	18+575.00	18+600.00	18+625.00	18+650.00	18+675.00	18+700.00	18+725.00	18+750.00	18+775.00	18+800.00	18+825.00	18+850.00	18+875.00	18+900.00	18+925.00	18+950.00	18+975.00	19+000.00	19+025.00	19+050.00	19+075.00	19+100.00	19+125.00	19+150.00	19+175.00	19+200.00	19+225.00																																																																	
QUOTE TERRENO	11.14	10.53	8.99	9.57	10.47	15.77	16.73	16.64	16.22	15.94	15.47	15.04	14.87	15.15	17.49	13.91	13.07	14.81	15.30	12.73	15.56	13.01	15.82	13.21	15.82	13.25	16.08	13.25	16.34	13.11	13.28	13.25	16.86	13.25	17.12	13.72	17.38	13.66	18+150.00	13.80	17.62	13.80	17.81	13.78	18+200.00	13.93	17.96	14.30	18+250.00	14.30	18+275.00	14.37	18.12	14.46	18+300.00	14.74	18+325.00	14.79	18+350.00	15.00	17.99	15.00	18+375.00	15.07	17.94	15.07	18+400.00	14.75	18+425.00	14.66	18+450.00	14.39	18+475.00	14.59	18+500.00	13.92	18+525.00	13.93	18+550.00	13.80	18+575.00	13.95	18+600.00	13.95	18+625.00	11.52	18+650.00	12.99	17.32	12.99	18+675.00	11.82	18+700.00	11.39	18+725.00	10.86	18+750.00	10.33	18+775.00	10.01	18+800.00	9.86	18+825.00	9.86	18+850.00	10.00	18+875.00	10.19	18+900.00	10.39	18+925.00	10.40	18+950.00	10.36	18+975.00	10.26	19+000.00	10.13	19+025.00	10.44	19+050.00	10.74	19+075.00	11.00	19+100.00	11.16	19+125.00	11.25	19+150.00	11.33	19+175.00	11.39	19+200.00	11.42	19+225.00
QUOTE PROGETTO	16.02	15.88	15.74	15.60	15.46	15.31	15.17	15.03	14.89	14.75	14.61	14.50	14.45	14.45	14.52	14.64	14.81	15.04	15.30	15.56	15.82	16.08	16.34	16.60	16.86	17.12	17.38	17.62	17.81	17.96	18.06	18.12	18.14	18.11	18.05	17.99	17.94	17.88	17.83	17.77	17.72	17.66	17.60	17.55	17.49	17.44	17.38	17.32	17.27	17.21	17.16	17.10	17.05	16.99	16.93	16.88	16.82	16.77	16.71	16.65	16.60	16.54	16.49	16.43	16.37	16.32	16.26	16.21	16.15	16.10																																																																	
DIFFERENZA QUOTE	4.88	5.36	6.75	6.03	4.99	-0.45	-1.55	-1.61	-1.33	-1.19	-0.86	-0.54	-0.43	-0.69	-2.97	0.72	1.74	2.60	2.57	2.55	2.61	2.84	3.23	3.33	3.61	3.40	3.72	3.82	4.03	4.03	3.76	3.75	3.68	3.36	3.26	3.00	2.87	3.13	3.17	3.38	3.12	3.74	3.68	3.75	3.54	3.49	5.86	4.33	5.45	5.63	6.30	6.77	7.04	7.13	7.08	6.88	6.63	6.37	6.31	6.29	6.34	6.41	6.05	5.69	5.38	5.16	5.01	4.87	4.76	4.68																																																																	
ANDAMENTO PLANIMETRICO	1436.15														90		L=268.95 R=3430 V14										90										645.04										135										L=213.72 R=2208 V15										135										1589.63																																																										
PROVINCIA	FOGGIA																																																																																																																																						
COMUNE	CHIEUTI																																																																																																																																						
VELOCITÀ DI TRACCIATO	200 km/ora																																																																																																																																						
SOPRAELEVAZIONE	Rotola destra: 85 mm Asse: 42 mm Rotola sinistra: 0 mm																																																																																																																																						

COMMITTENTE: **RFI** RETE FERROVIARIA ITALIANA
GRUPPO FERROVIE DELLO STATO ITALIANE
DIREZIONE INVESTIMENTI
DIREZIONE PROGRAMMI INVESTIMENTI
DIRETTRICE SUD - PROGETTO ADRIATICA

DIREZIONE LAVORI:

APPALTATORE: **AGOSTINI** COSTRUZIONI **ATLANTE**

PROGETTAZIONE: **HUB** **pro**

PROGETTO ESECUTIVO
LINEA PESCARA - BARI
RADDOPPIO DELLA TRATTA FERROVIARIA TERMOLI - LESINA
LOTTO 2 e 3: RADDOPPIO TERMOLI - RIPALTA

Profilo longitudinale binario pari
Tav. - 11

SCALA: 1:2000

COMMESSA: LI0B 02 E ZZ F6 IF0001 028 E

Rev.	Descrizione	Redatto	Data	Verificato	Data	Approvato	Data	Autorizzato	Data
A	Emissione Costrutti	Matteo Guadagnoli	02/08/2023	Matteo Pappalardo	02/08/2023	Paolino Anselmi	02/08/2023		
B	Emissione Costrutti	Matteo Guadagnoli	02/08/2023	Matteo Pappalardo	02/08/2023	Paolino Anselmi	02/08/2023		
C	Revisione per RV	Matteo Guadagnoli	02/08/2023	Matteo Pappalardo	02/08/2023	Paolino Anselmi	02/08/2023		
D	Revisione per RV	Matteo Guadagnoli	02/08/2023	Paolino Anselmi	02/08/2023	Paolino Anselmi	02/08/2023		
E	Revisione per RV	Matteo Guadagnoli	02/08/2023	Paolino Anselmi	02/08/2023	Paolino Anselmi	02/08/2023		

File: LI0B 02 E ZZ F6 IF0001 028 E.DWG n. Elab.: 1