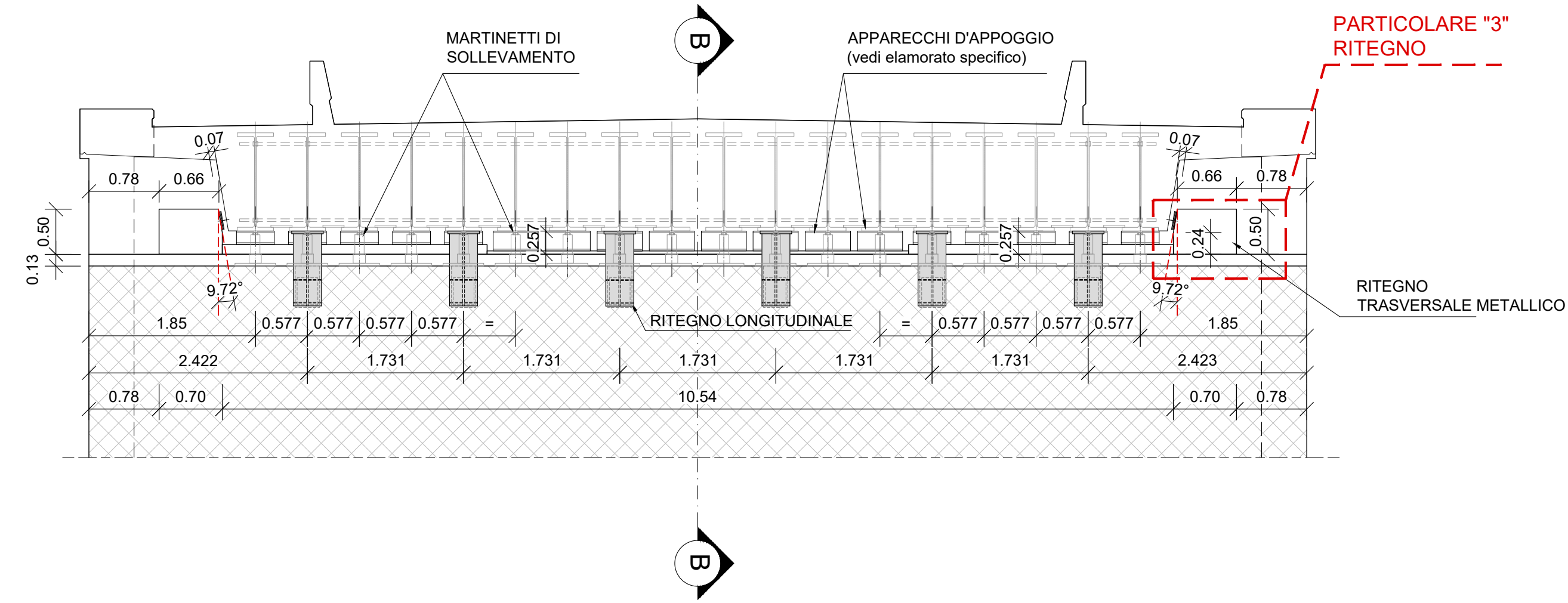
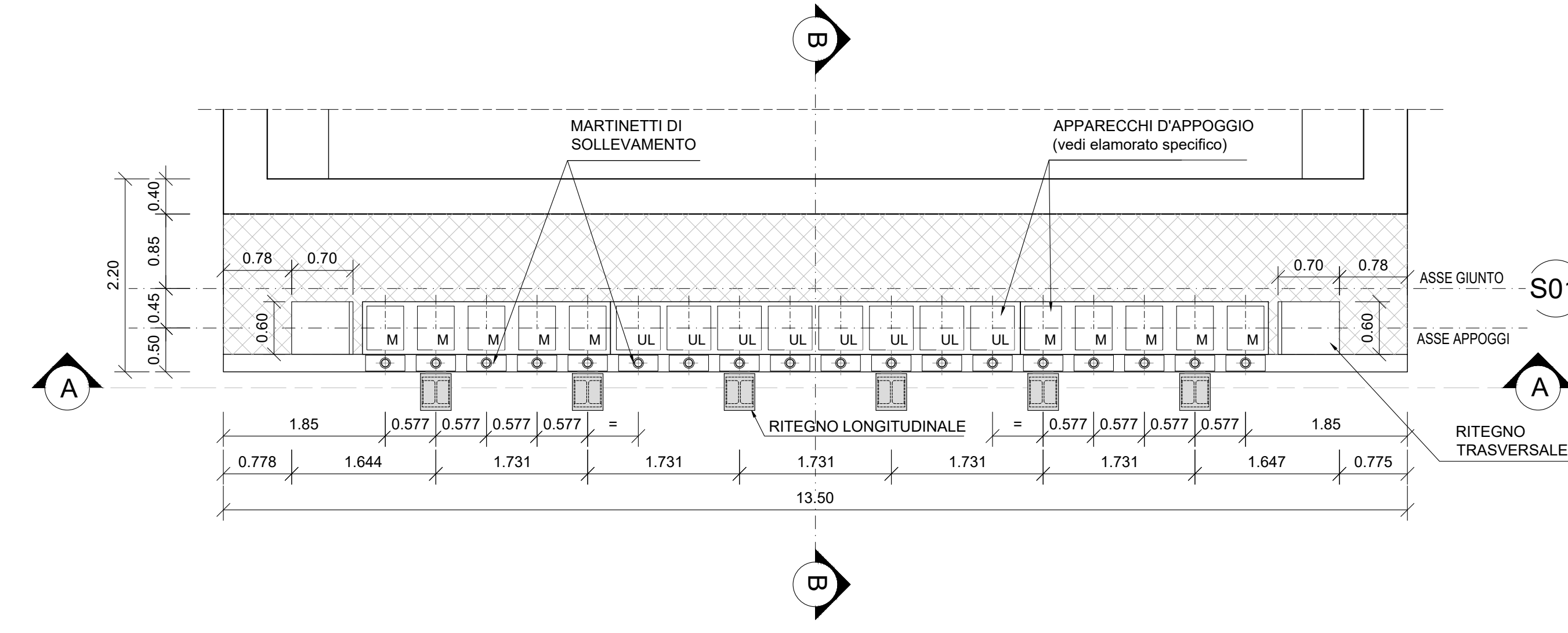


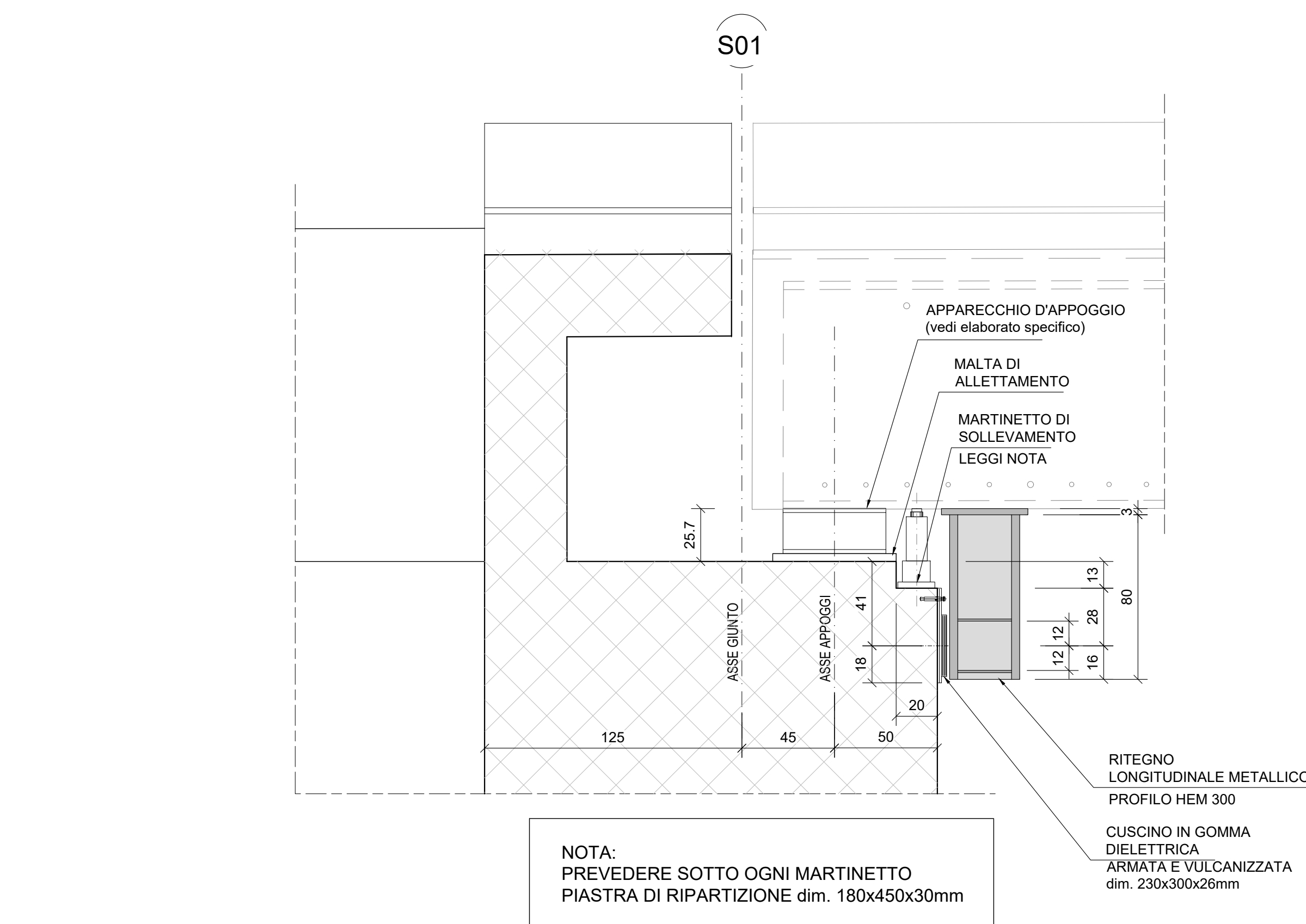
SPALLA 1 - SEZIONE A-A  
SCALA 1:50



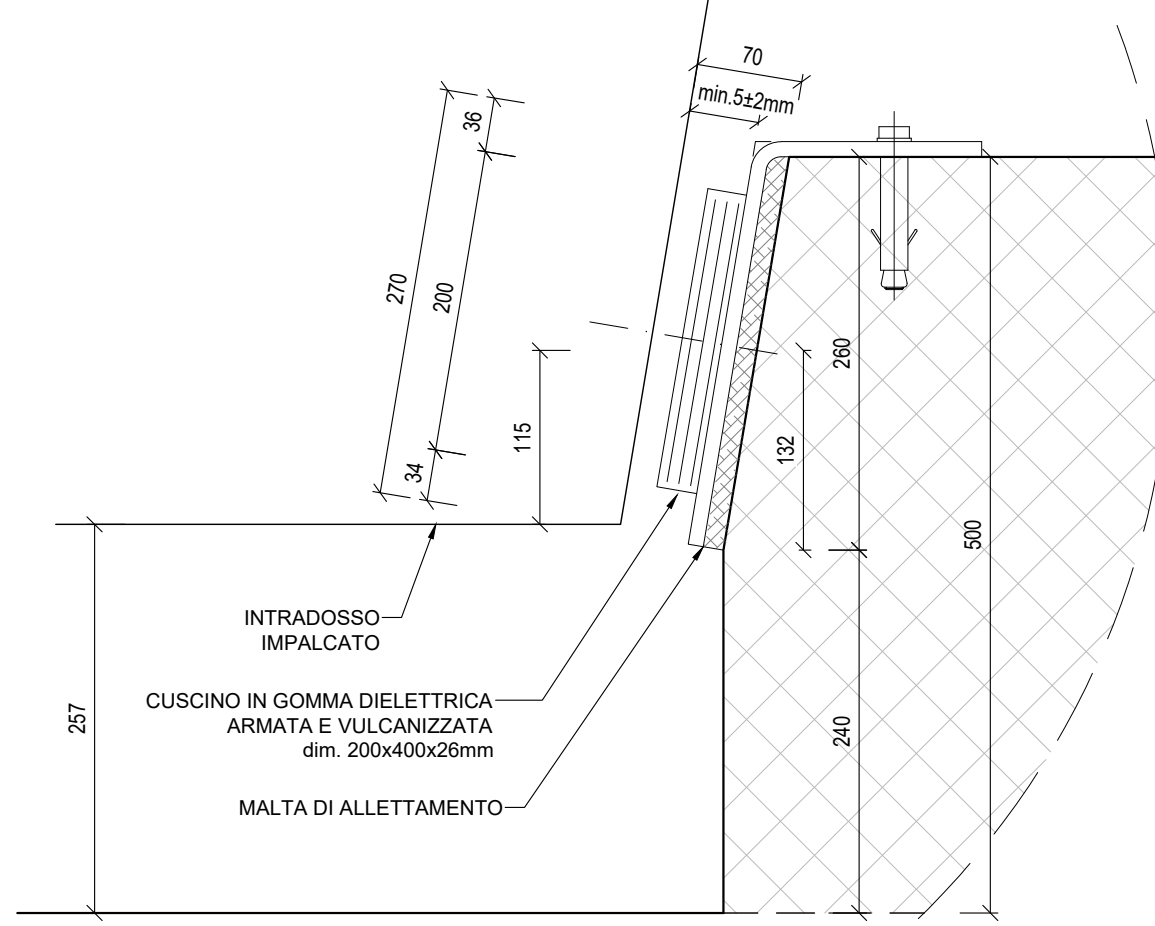
SPALLA 1 - PIANTA PULVINO  
SCALA 1:50



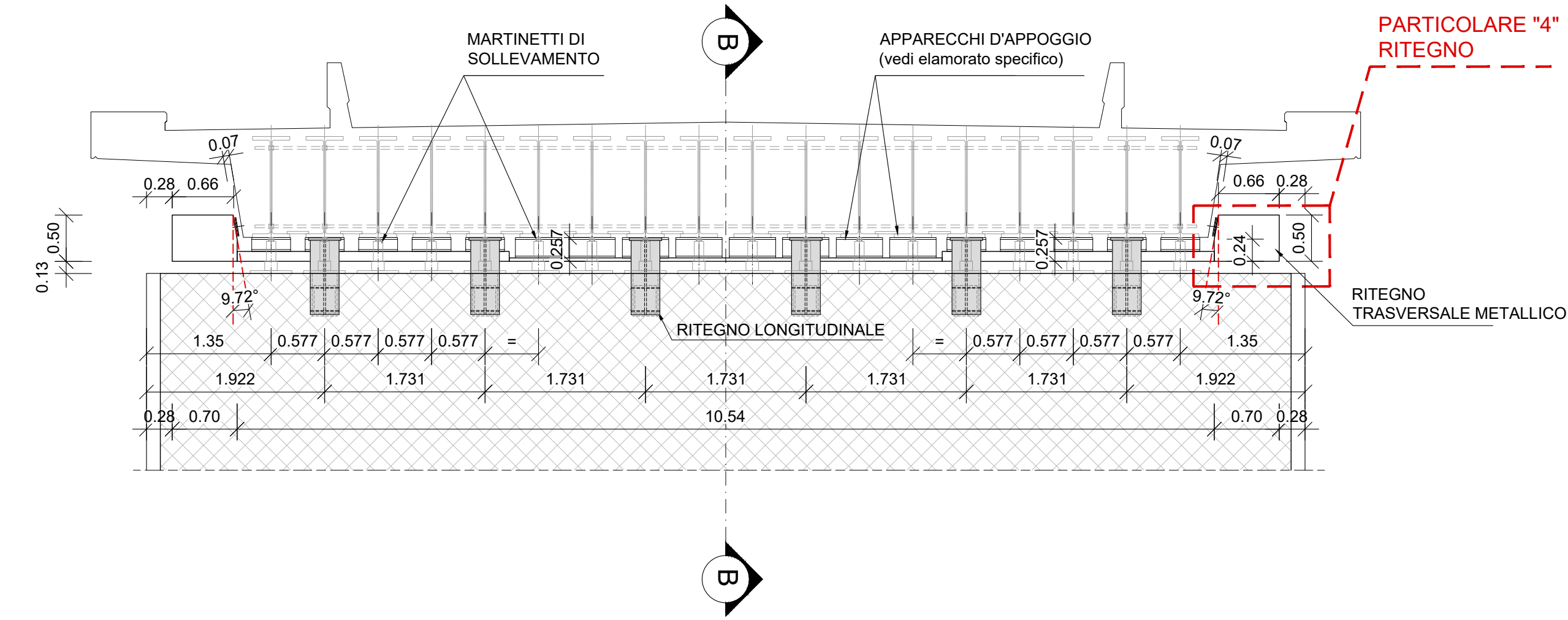
SPALLA 1  
SEZIONE B-B  
SCALA 1:20 (misure in cm)



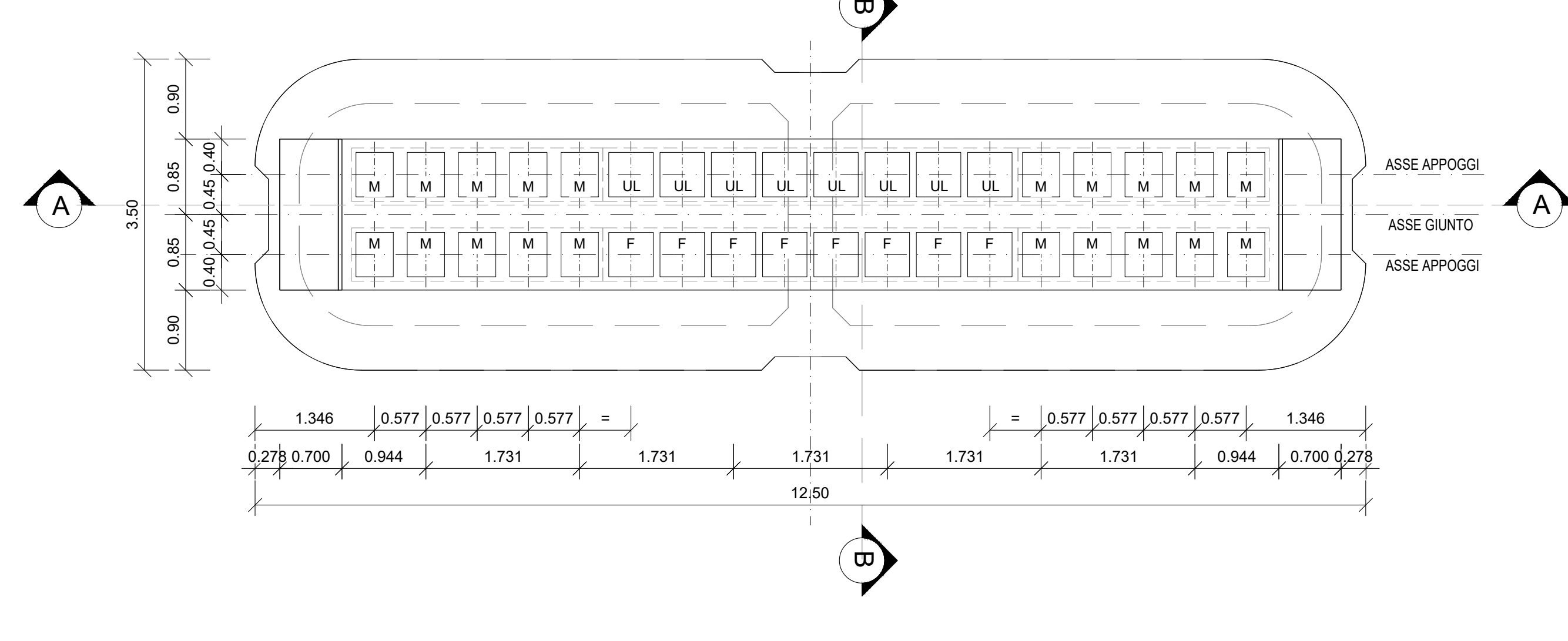
RITEGNO TRASVERSALE  
PARTICOLARE "3"  
SCALA 1:5 (misure in mm)



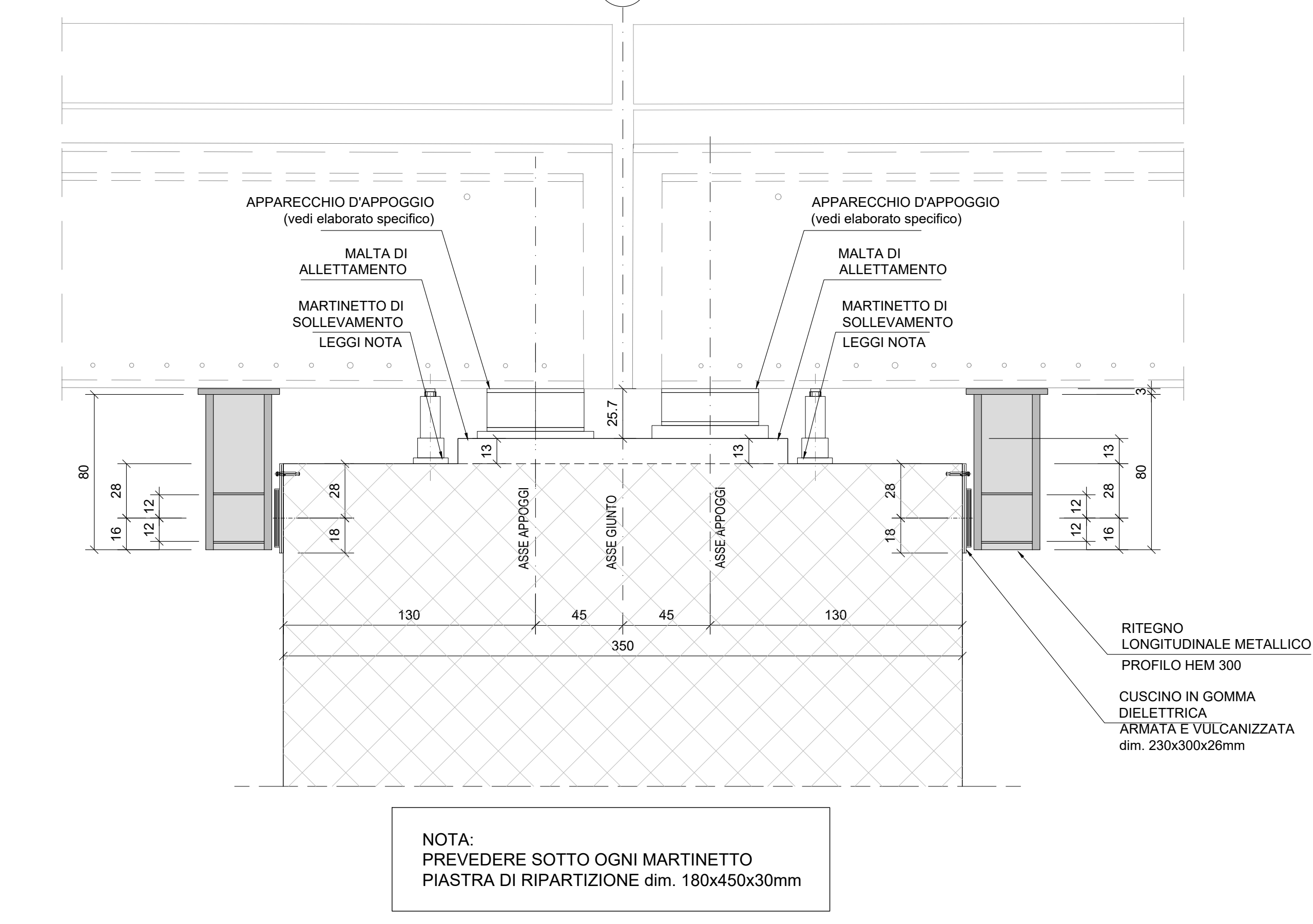
PILA 1 - SEZIONE A-A  
SCALA 1:50



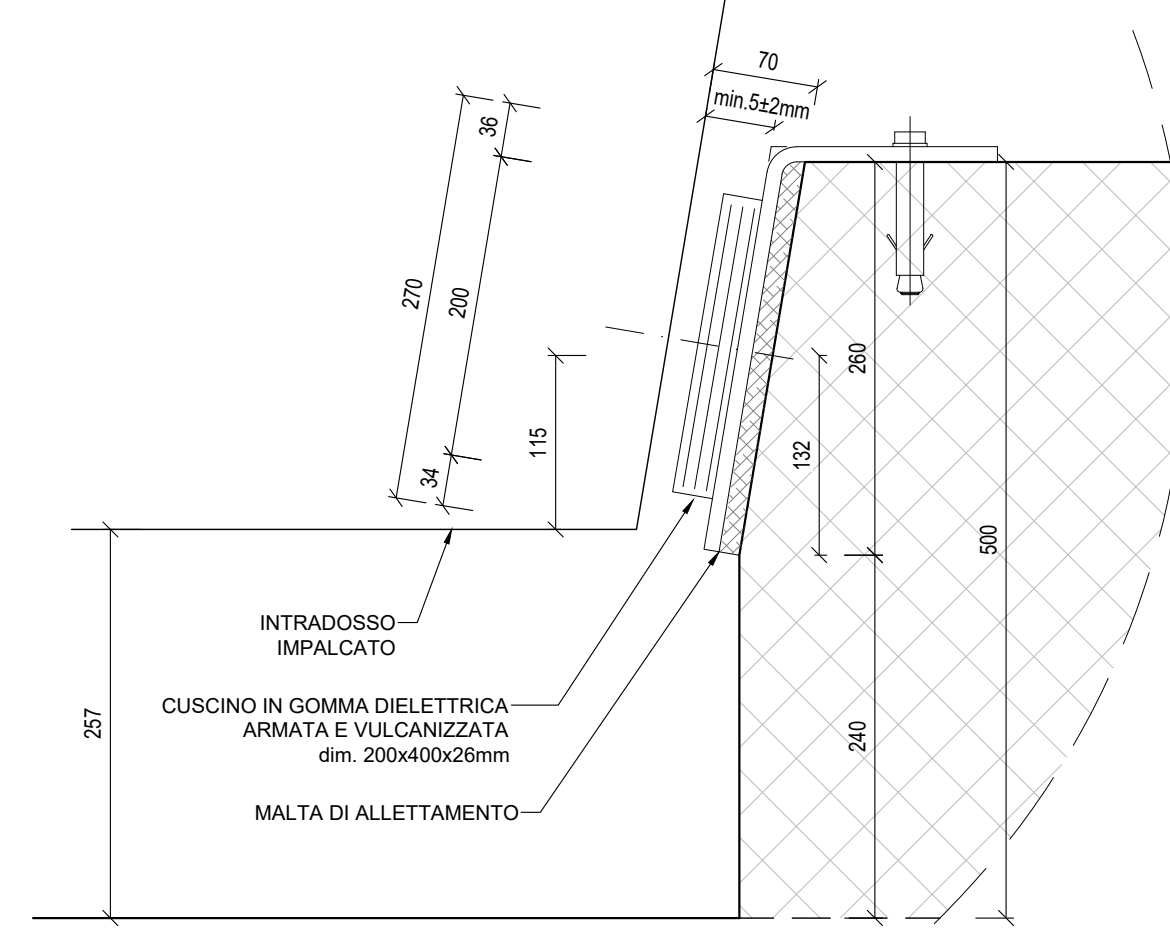
PILA 1 - PIANTA PULVINO  
SCALA 1:50



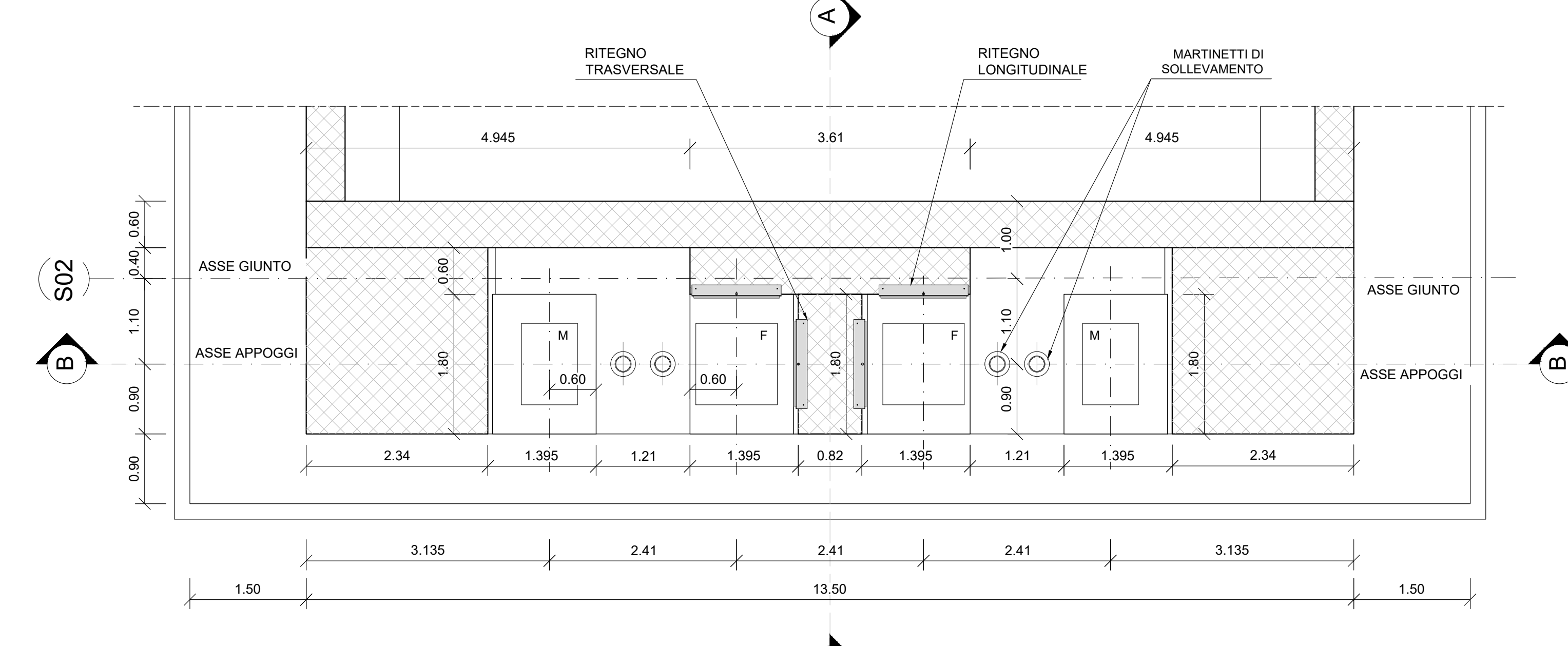
PILA 1  
SEZIONE B-B  
SCALA 1:20 (misure in cm)



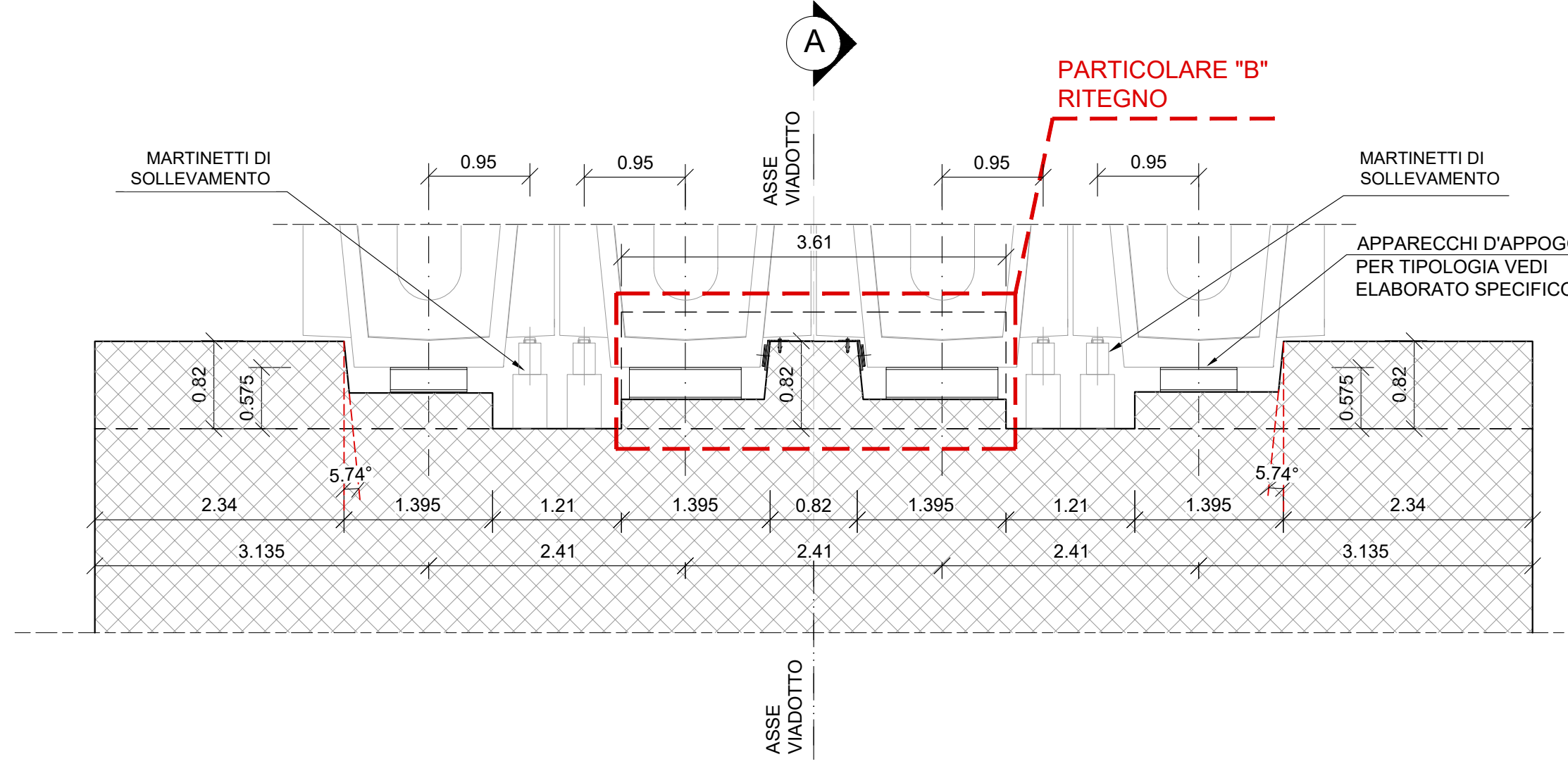
RITEGNO TRASVERSALE  
PARTICOLARE "4"  
SCALA 1:5 (misure in mm)



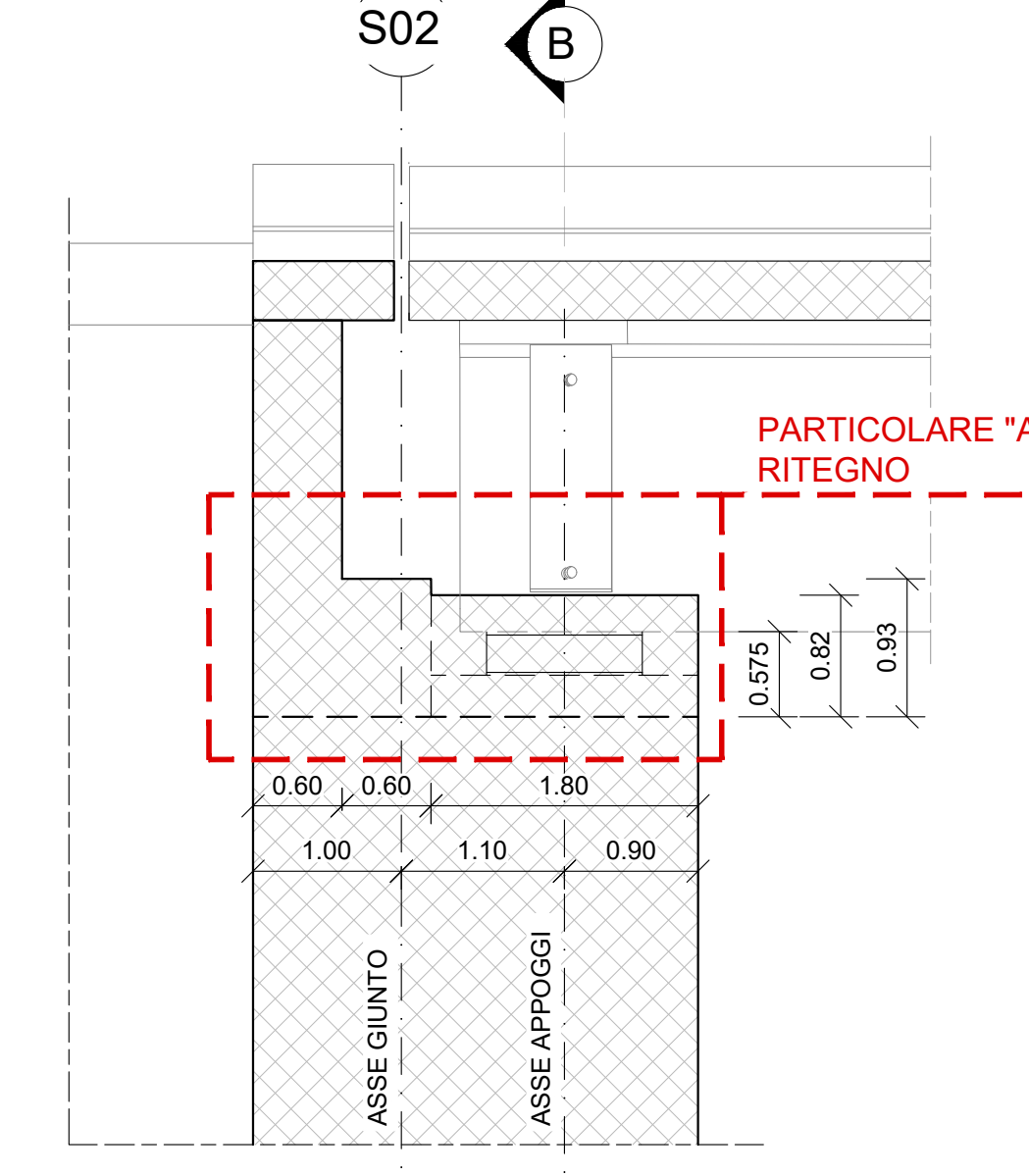
SPALLA 2 - PIANTA PULVINO  
SCALA 1:50



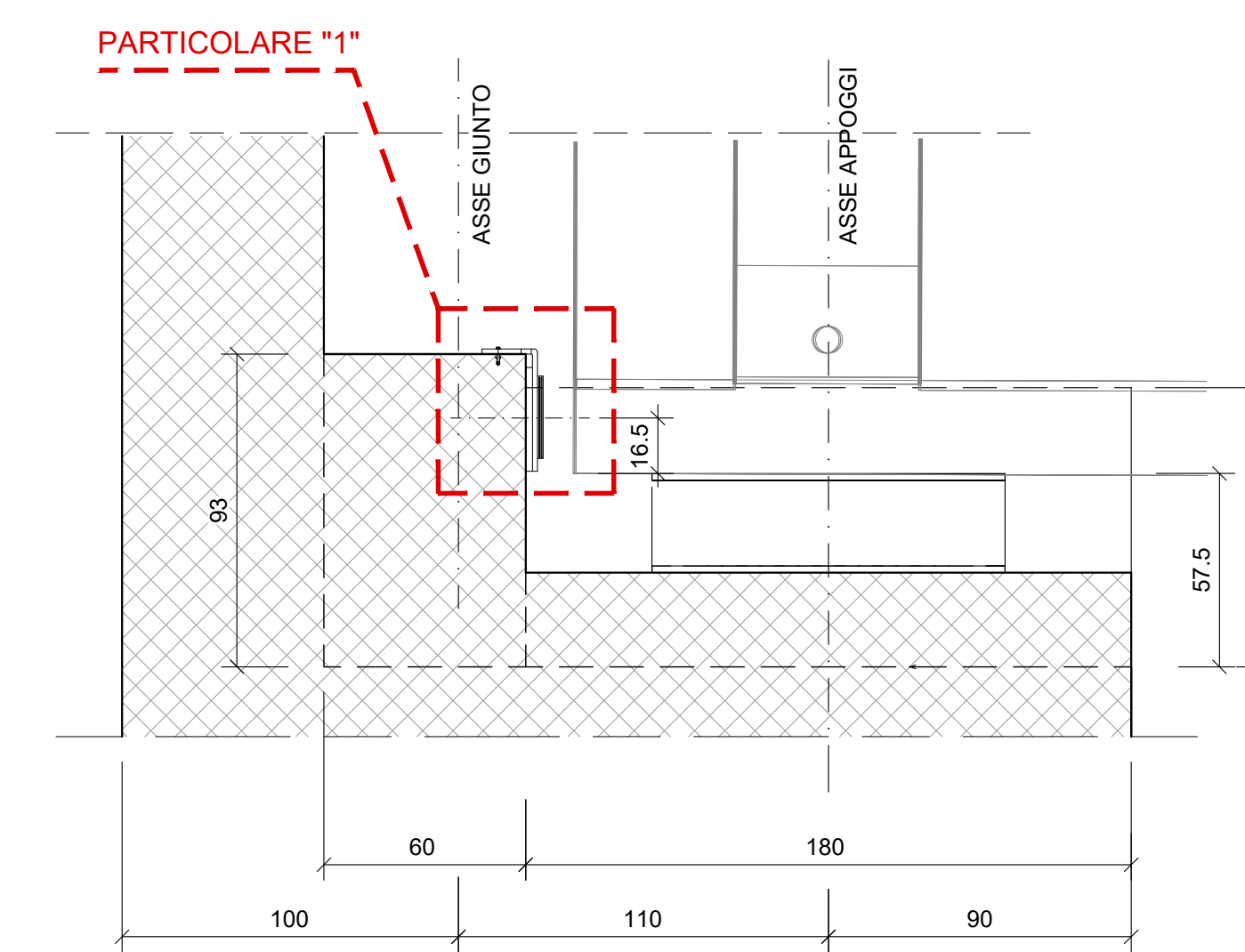
SPALLA 2 - SEZIONE B-B  
SCALA 1:50



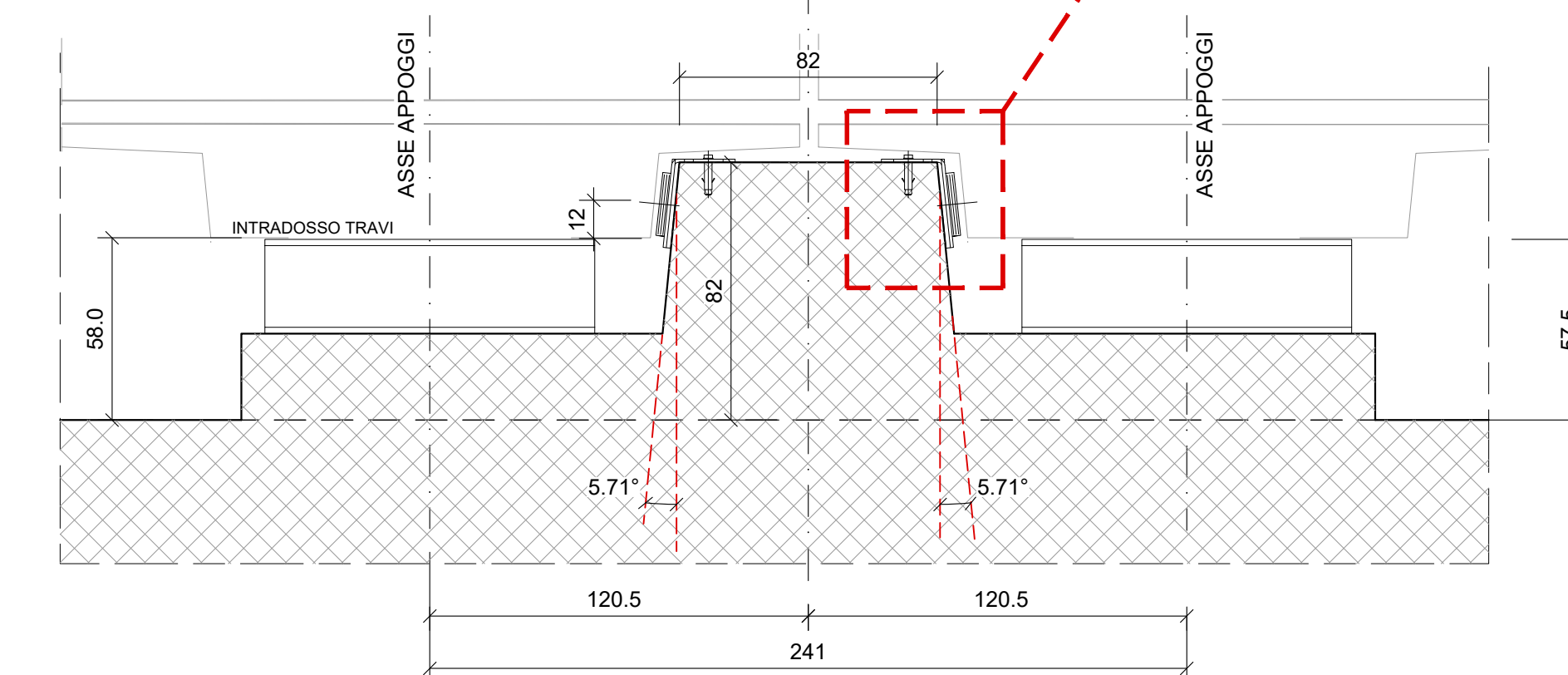
SPALLA 2 - SEZIONE A-A  
SCALA 1:50



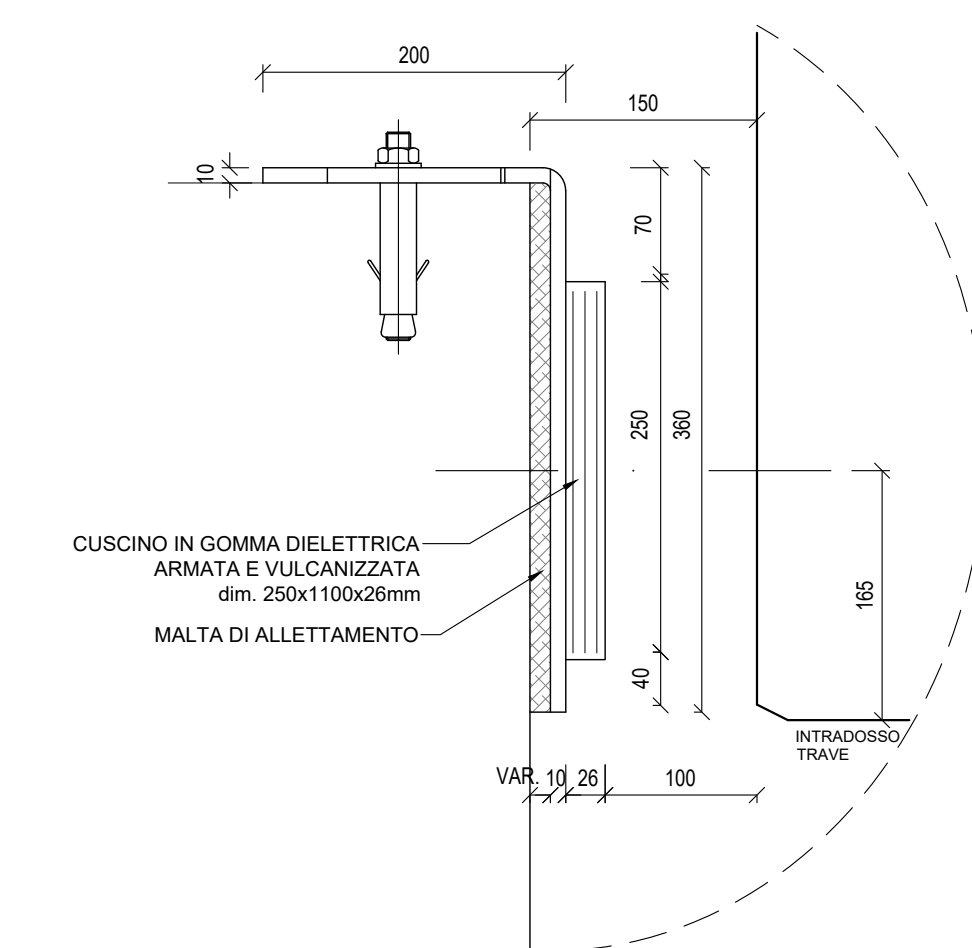
PARTICOLARE "A"  
SCALA 1:20 (misure in cm)



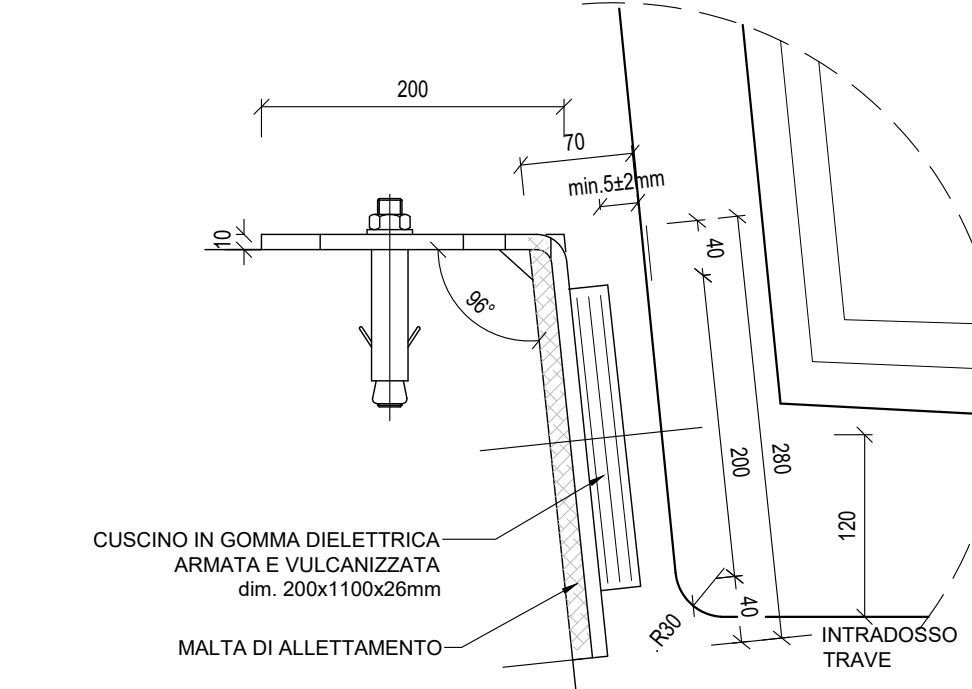
PARTICOLARE "B"  
SCALA 1:20 (misure in cm)



RITEGNO LONGITUDINALE  
PARTICOLARE "1"  
SCALA 1:5 (misure in mm)



RITEGNO TRASVERSALE  
PARTICOLARE "2"  
SCALA 1:5 (misure in mm)



| N. PILA | LATO NORD<br>H1 (cm) | LATO SUD<br>H1 (cm) |
|---------|----------------------|---------------------|
| P1      | 25.7                 | 25.7                |
| P2      | 25.7                 | 57.9                |
| P3      | 58.1                 | 57.9                |
| P4      | 58.1                 | 57.9                |
| P5      | 58.1                 | 57.9                |
| P6      | 58.1                 | 57.9                |
| P7      | 58.1                 | 57.9                |
| P8      | 58.1                 | 57.9                |
| P9      | 58.1                 | 57.9                |
| P10     | 58.1                 | 57.9                |
| P11     | 58.1                 | 57.9                |
| P12     | 58.1                 | 57.9                |
| P13     | 58.1                 | 57.9                |
| P14     | 58.1                 | 57.9                |
| P15     | 58.1                 | 57.9                |
| P16     | 58.1                 | 105.9               |
| P17     | 106.1                | 105.9               |
| P18     | 106.1                | 57.9                |
| P19     | 58.1                 | 57.9                |
| P20     | 58.1                 | 57.9                |
| P21     | 57.9                 | 58.1                |
| P22     | 57.9                 | 58.3                |
| P23     | 57.5                 | 58.5                |
| P24     | 57.5                 | 58.5                |
| P25     | 57.5                 | 58.5                |
| P26     | 57.5                 | 58.5                |
| P27     | 57.5                 | 58.5                |
| P28     | 57.5                 | 58.5                |

| GIUNTI             | Max escursione<br>Longitudinale (mm) | Dimensione dei<br>varchi (mm) |
|--------------------|--------------------------------------|-------------------------------|
| SPALLA S1          | 1130                                 | 150                           |
| SPALLA S2          | 10                                   | 50                            |
| PILA P11, P12, P18 | 1180                                 | 200                           |
| PILA L15, L6-28    | 1130                                 | 150                           |

COMMITTENTE: **RFI** RETE FERROVIARIA ITALIANA GRUPPO FERROVIE DELLO STATO ITALIANE  
 DIREZIONE LAVORI: **ITALFERR** GRUPPO FERROVIE DELLO STATO ITALIANE  
 APPALTATORE: **AGOSTINO** COSTRUZIONI S.p.A. / **ATLANTE**  
 PROGETTAZIONE: **HUB** / **HUBpro**  
**LINEA PESCARA - BARI**  
**RADDOPPIO DELLA TRATTA FERROVIARIA TERMOLI - LESINA**  
**LOTTO 2 e 3: RADDOPPIO TERMOLI - RIPALTA**  
 Opere D'Arte Maggiori - Ponti e Viadotti Ferroviari  
 VI06 da km 15+113.55 a km 15+918.55  
 Carpentieri baggiori e ritegni sismici tav. 1/2

| Revit. | Descrizione          | Redatto    | Verificato   | Approvato | Data       | Autore       | Data       |
|--------|----------------------|------------|--------------|-----------|------------|--------------|------------|
| A      | Firma emittente      | A. Sestini | M. Magagnoli | A. Rossi  | 02/09/2023 | M. Magagnoli | 02/09/2023 |
| B      | Approvazione per REV | A. Sestini | M. Magagnoli | A. Rossi  | 27/09/2023 | M. Magagnoli | 28/09/2023 |

FILE: LI06.02.E.ZZ.BB.VI0600.001.B.DWG