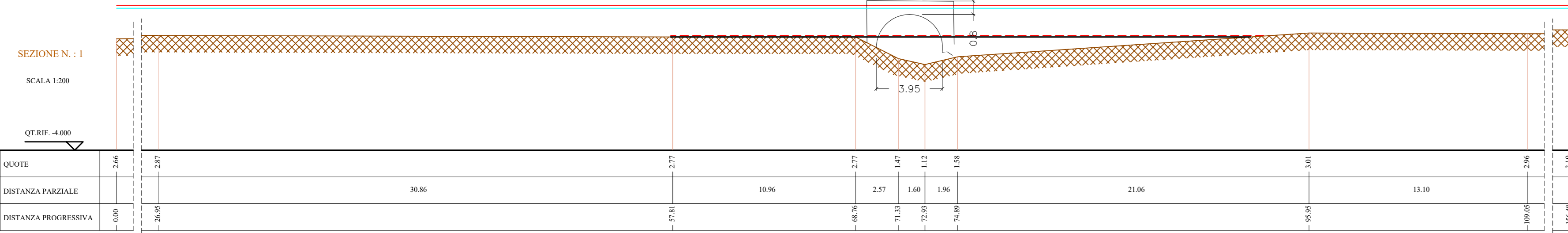
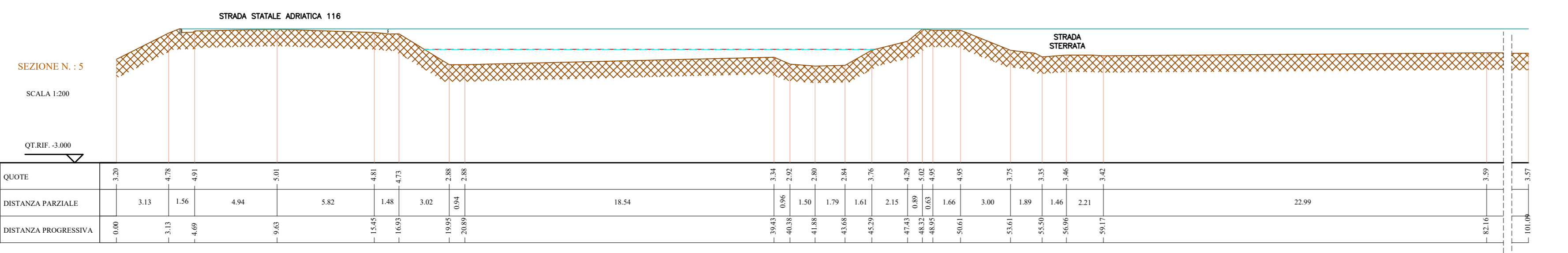
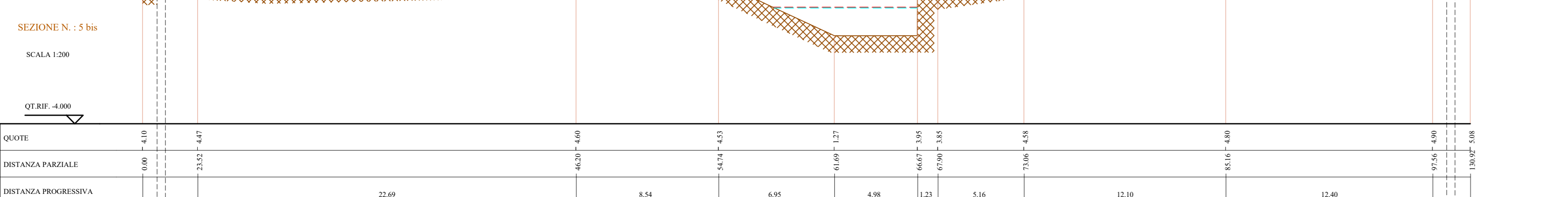
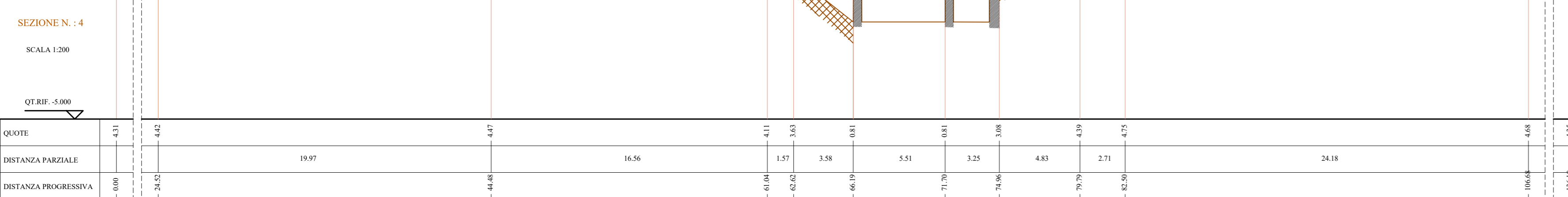
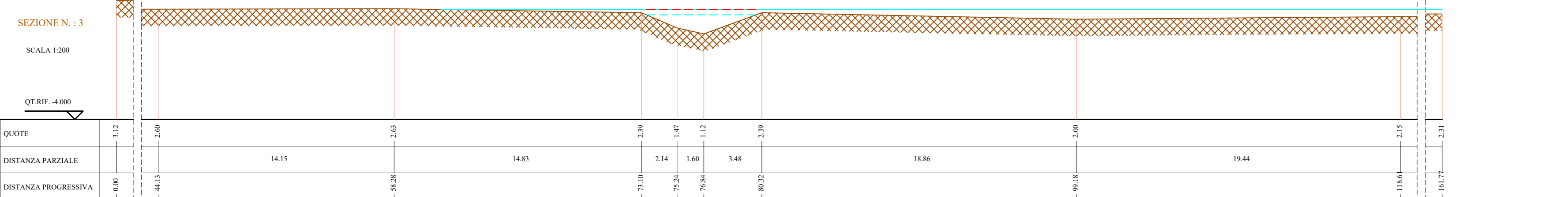
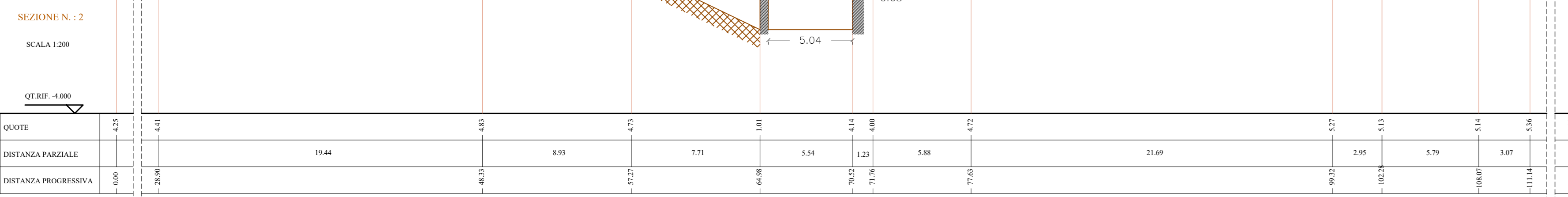


SEZIONI ANTE OPERAM

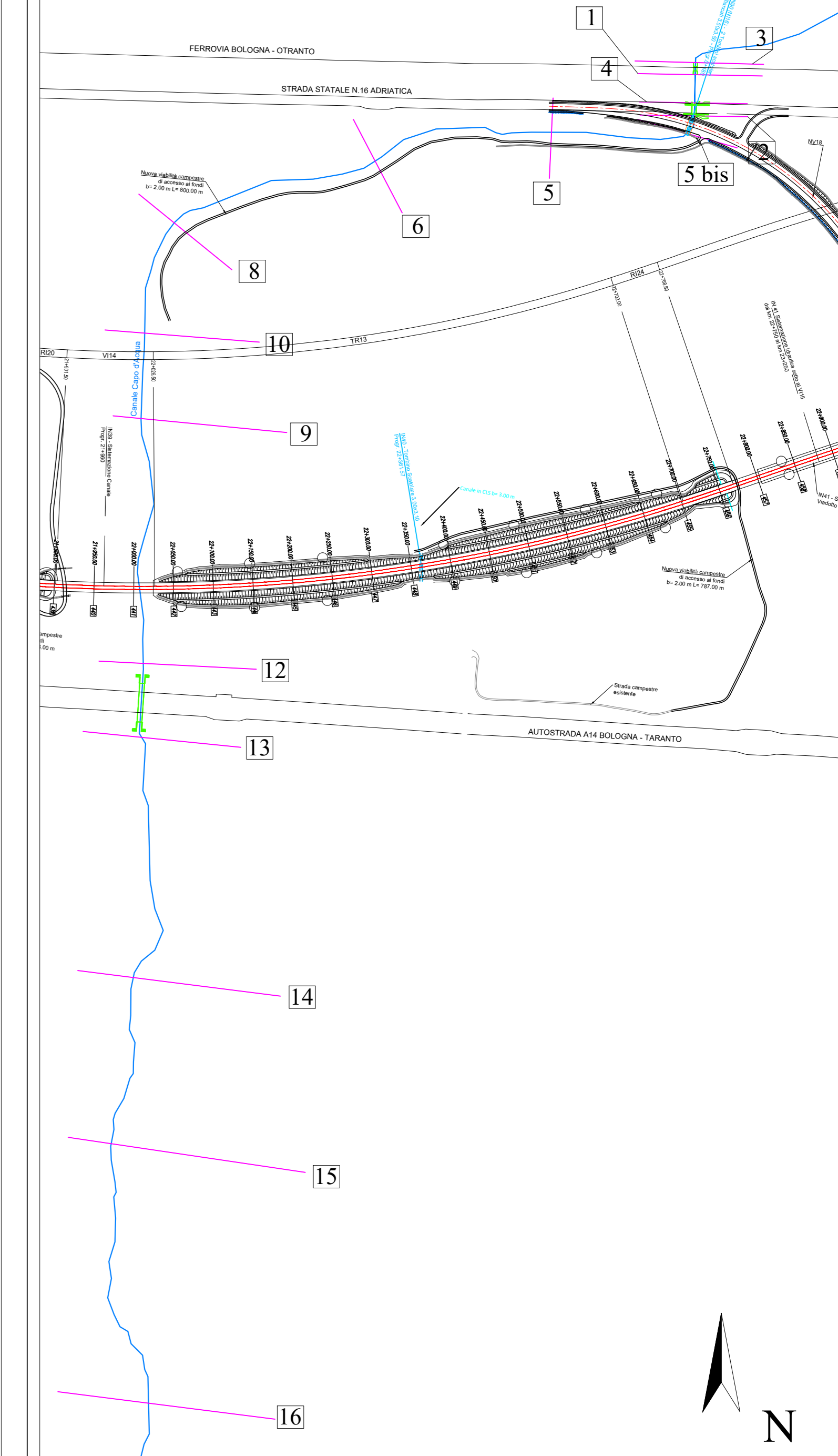
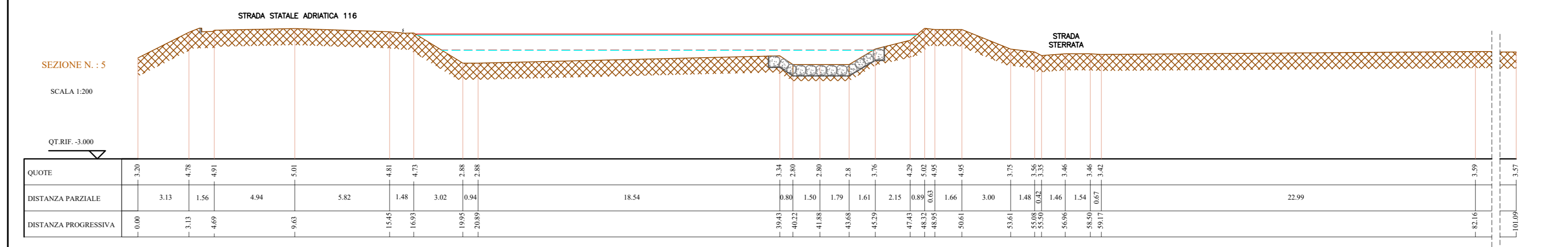
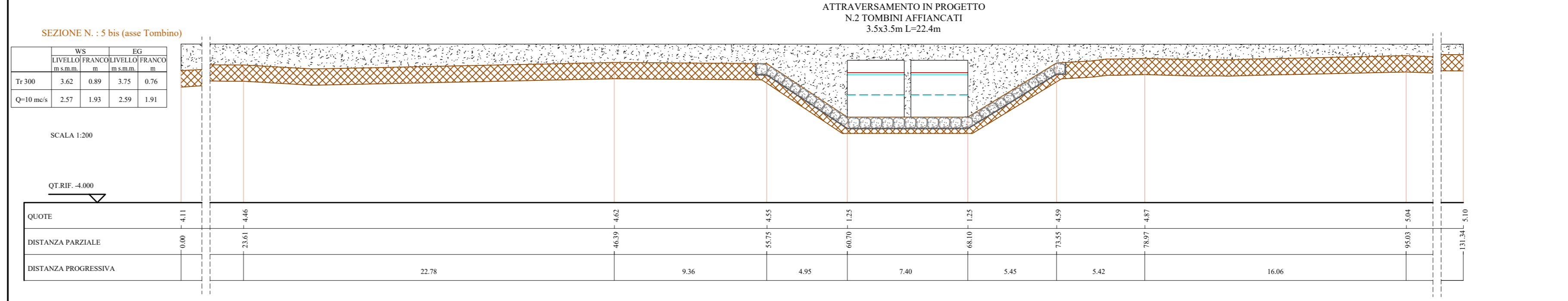
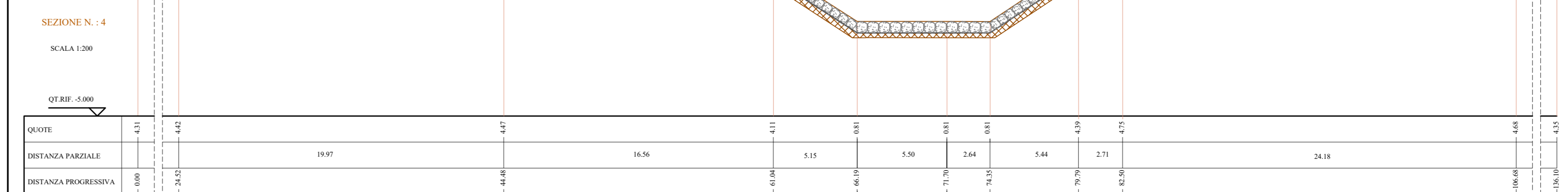
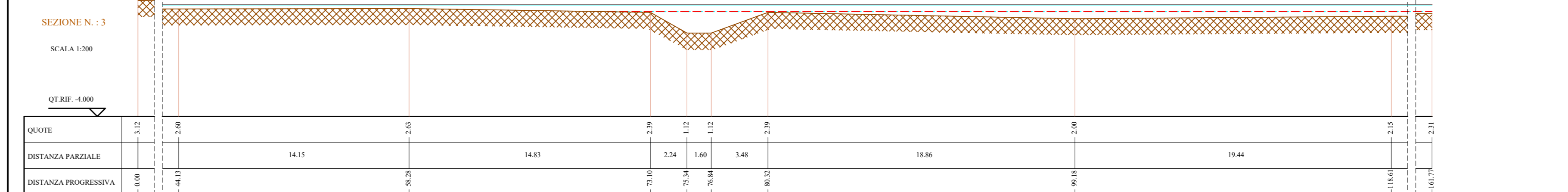
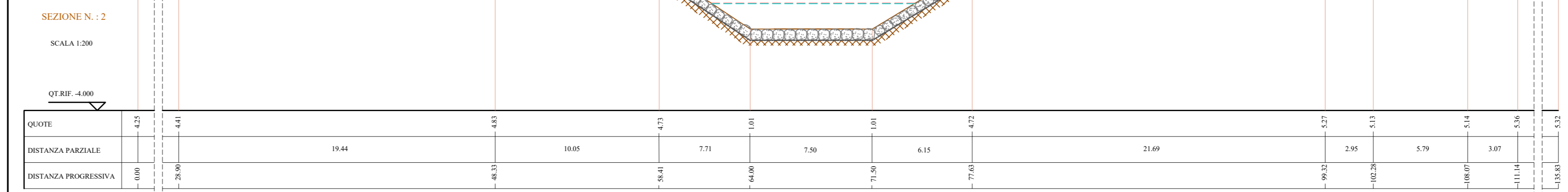
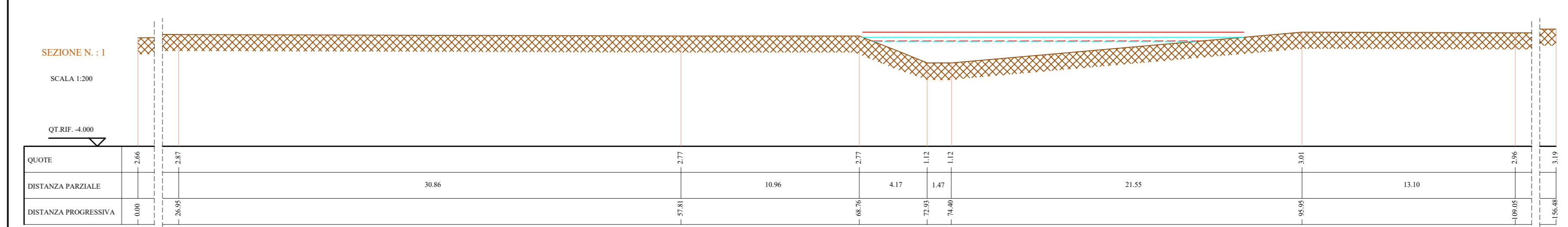
TOMBINO FERROVIARIO DA DEMOLIRE



TOMBINO STRADALE DA DEMOLIRE



SEZIONI POST OPERAM



LEGENDA SEZIONI

—— LIVELLO IDRICO TR 300 (WS)
 —— LIVELLO IDRICO Q = 10 mcs (WS)

—— LIVELLO ENERGIATRIZI TR 300 (EG)
 —— LIVELLO ENERGIATRIZI Q = 10 mcs (EG)

 PROFILO DEL TERRENO

NR LE QUOTE SONO ESPRESSE IN m s.l.m.

LE SEZIONI SONO STATE RICOSTRUITE MEDIANTE RILIEVO CETERIMETRICO IN CAMPO

COMMITTENTE: **RFI RETE FERROVIARIA ITALIANA**

DIREZIONE LAVORI: **ITALFERR**

APPALTATORE: **AGOSTINI COSTRUZIONI**

MANDATARIA: **HUB** MANDANTI: **HYPRO**

PROGETTO ESECUTIVO

LINEA PESCARA - BARI
RADDOPPIO DELLA TRATTA FERROVIARIA TERMOLI - LESINA
LOTTO 2 e 3: RADDOPPIO TERMOLI - RIPALTA

IDRAULICA
Sezioni ante e post operam "Capo d'Acqua" pk 22+025 1/3

APPROVATORE	PROGETTATORE	SCALA
... (signature) ...	DIRETTORE DELLA PROGETTAZIONE ... (signature) ...	1:200

COMMESSA: **L10B 02 E ZZ W9 ID0002 027 C**

Rev.	Descrizione	Redatto	Data	Verificato	Data	Approvato	Data	Autorizzato	Data
A	Emissione Caricchi	C. Colonna	04/2022	V. Sestini	04/2022	V. Sestini	04/2022
B	Revisione a seguito di RCV	C. Colonna	04/2022	V. Sestini	04/2022	V. Sestini	04/2022
C	Revisione a seguito di RCV	C. Colonna	04/2022	V. Sestini	04/2022	V. Sestini	04/2022

File: L10BZZEZZW9ID0002027C.DWG n. Esib.: ...