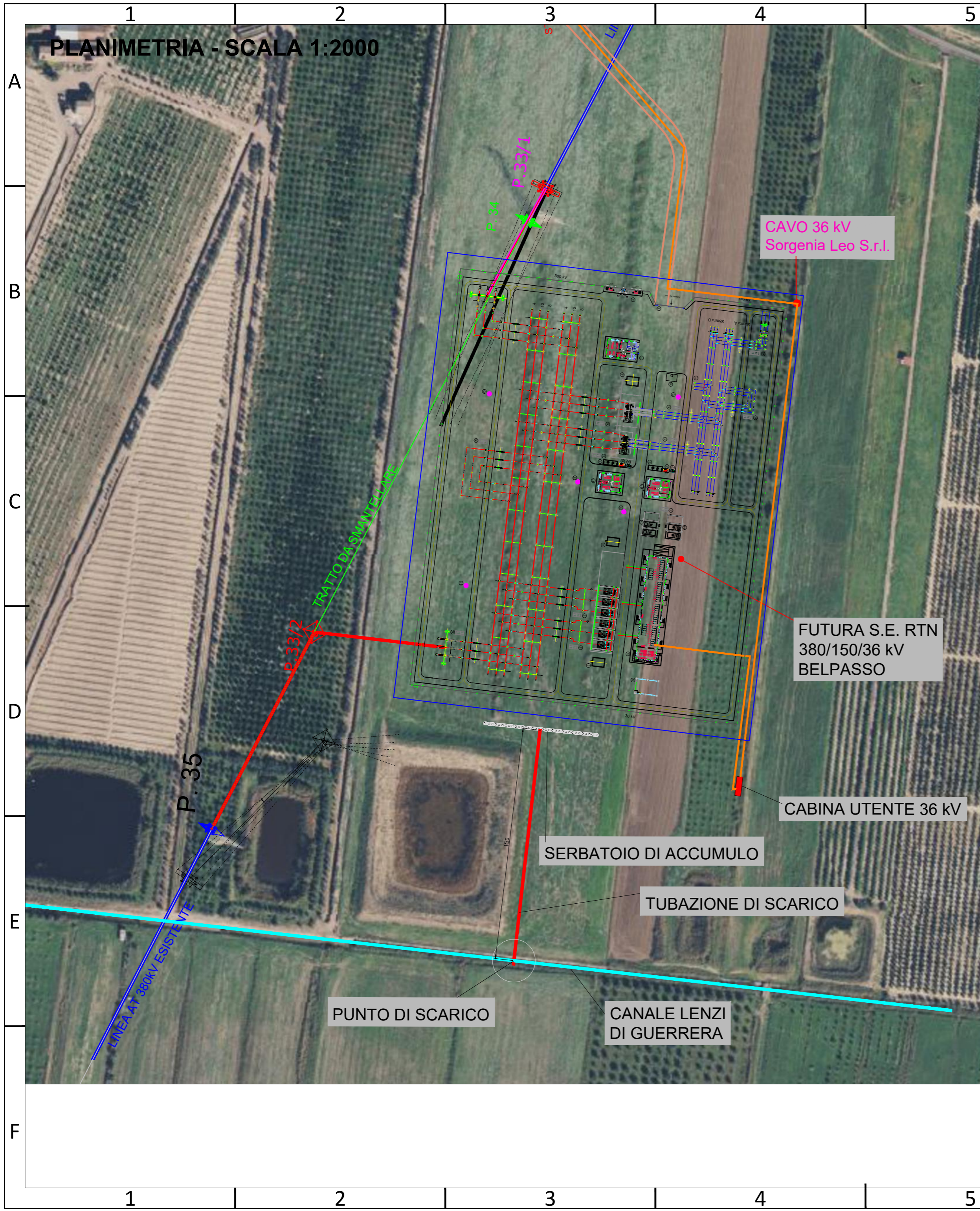
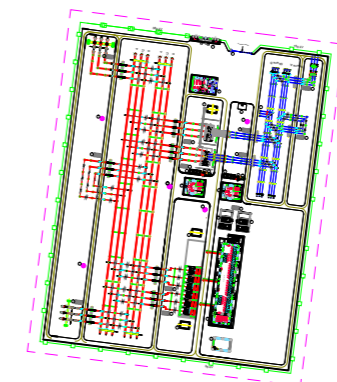







PLANIMETRIA - SCALA 1:2000

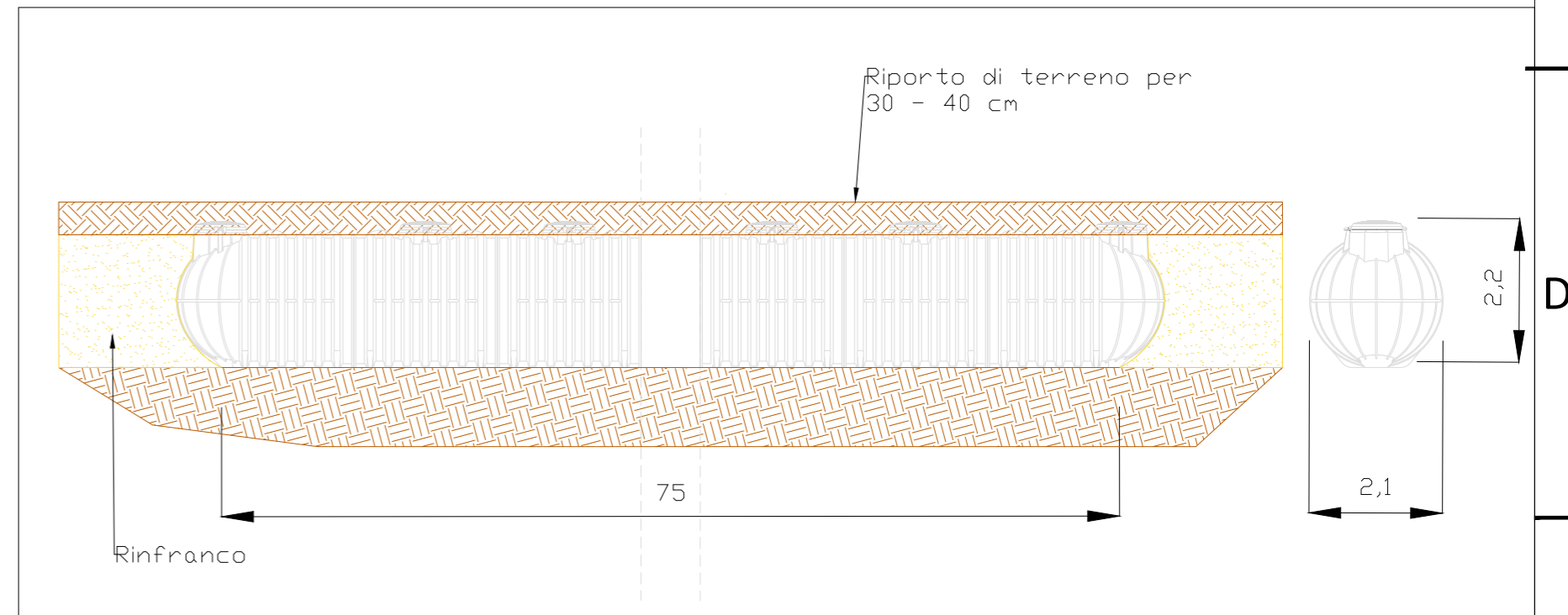


LEGENDA



-  Cavidotto 36kV collegamento Sorgenia Leo S.r.l.
-  Cabina utente 36kV
-  Serbatoio di accumulo
-  Tubazione di scarico serbatoio
-  Ricettore finale (canale Lenzi di Guerrera)

SEZIONE LONGITUDINALE E TRASVERSALE SERBATOIO  
SCALA 1:100



 REALIZZATO DA  Via R. Galilei 9, 20148 Milano tel: 0249831204 - fax: 0249831510 PEC: info@pec.tcmz.it - mail: info@tcmzweb.it	PROPRIETARIO  Sorgenia Leo Srl Via A. Algardi 4, 20148 Milano tel: 02671941
	TITOLO TAVOLA Planimetrie opere idrauliche nuova SE Belpasso 380

Note di revisione					PROGETTO Impianto agro-fotovoltaico "Polmone" Ramacca (CT)			CODICE PROGRESSIVO    PROGETTO    PROCEDURA    TIPO    TAVOLA    REVISIONE 21047RMC    P    DT    3900		
0	07/03/24	prima emissione	RZ	VDA	NOME FILE	FORMATO	SCALA			
REV.	DATA	DESCRIZIONE	PREP	APPR	240321RMC-Invarianz_idraulicaSE	A2	varie			
					NOTE					